

NATIONAL ART GALLERY
AND DOMINION MUSEUM
NEW ZEALAND



SOUVENIR
CATALOGUE OF PICTURES
AND WORKS OF ART FOR
OPENING EXHIBITION
AUGUST, 1936

1/-

NEW ZEALAND ACADEMY OF FINE ARTS
ANNUAL EXHIBITION

GALLERY "V."

		£	s.	d.
SYDNEY H. HIGGS				
1.	Mt. Monganui, North Auckland - Watercolour	6	6	0
NUGENT WELCH				
2.	Lake Gunn, Eglington Valley - "	9	9	0
SYDNEY H. HIGGS				
3.	Poplars on the Manawatu - - - - - "	7	7	0
GWYNETH RICHARDSON				
4.	North Shore, Tapeka - - - - - "	9	9	0
NUGENT WELCH				
5.	Trees in Sunlight - - - - - "	10	10	0
6.	A Peak in the Hollyford - - - - - "	11	11	0
7.	Manapouri - - - - - "			
8.	Coast Piece - - - - - "			
V. A. BROWN				
9.	Constitution Hill - - - - - "	10	10	0
NUGENT WELCH				
10.	Shandon Landscape - - - - - "	15	15	0
V. A. BROWN				
11.	Barns - - - - - "	5	5	0
THE LATE A. E. BAXTER				
12.	Evening, Queenstown - - - - - "	15	15	0
ENGA WASHBOURN				
13.	June Morning, Tarakohe Coast, Takaka - - - - - "	12	12	0
W. E. RICE				
14.	Sunlit Valley - - - - - "	6	6	0
T. A. McCORMACK				
15.	Oriental Parade - - - - - "	16	16	0
16.	Tapu Te Ranga - - - - - "	30	0	0
17.	Eastern Harbour, Wellington - - - - - "	16	16	0
18.	Morning Light, Wellington Harbour - - - - - "	35	0	0
GWYNETH RICHARDSON				
19.	Gathering Storm, Paihia, Bay of Islands - - - - - "	8	8	0

ACADEMY OF FINE ARTS ANUNAL EXHIBITION—GALLERY "U"

		£	s.	d.
T. A. McCORMACK				
20.	Early Summer - - - - - "	17	17	0
MARION E. TYLEE				
21.	The Garden Lookout - - - - - "	5	5	0
T. A. McCORMACK				
22.	Flower Study - - - - - "	12	12	0
ANN P. HEWITT				
23.	The Dumaresq River - - - - - "	7	7	0
GALLERY "U."				
WINIFRED BODLE				
24.	Sulphur Pool, Rotorua - - - - - Oil Painting	4	4	0
J. W. DICKSON				
25.	Brown Beret - - - - - Watercolour	6	6	0
WILLIAM TILLER				
26.	The Pastelist - - - - - Pastel	25	0	0
S. A. HOLLAND				
27.	Autumn - - - - - Oil Painting	12	12	0
MABEL HILL				
28.	Old Inn and Town Hall, Woodbridge, Suffolk - - - - - Watercolour	10	10	0
A. ELIZABETH KELLY				
29.	St. Ives, Cornwall - - - - - Watercolour	12	12	0
SYDNEY H. HIGGS				
30.	Waikanae Landscape - - - - - Watercolour	10	10	0
AILEEN PALMER				
31.	Lyall Bay from the Hills - - - - - Watercolour	6	6	0
ALICE F. WHYTE				
32.	Trafalgar Street, Onehunga - - - - - Watercolour	5	5	0
THANE FIELD				
33.	Daisies - - - - - Watercolour	12	12	0
B. C. DOBIE				
34.	Opening Day, Partridge Shooting - - - - - Oil Painting	21	0	0
MABEL HILL				
35.	A Street in Amalfi - - - - - Watercolour	15	15	0

ACADEMY OF FINE ARTS ANUNAL EXHIBITION—GALLERY "U"

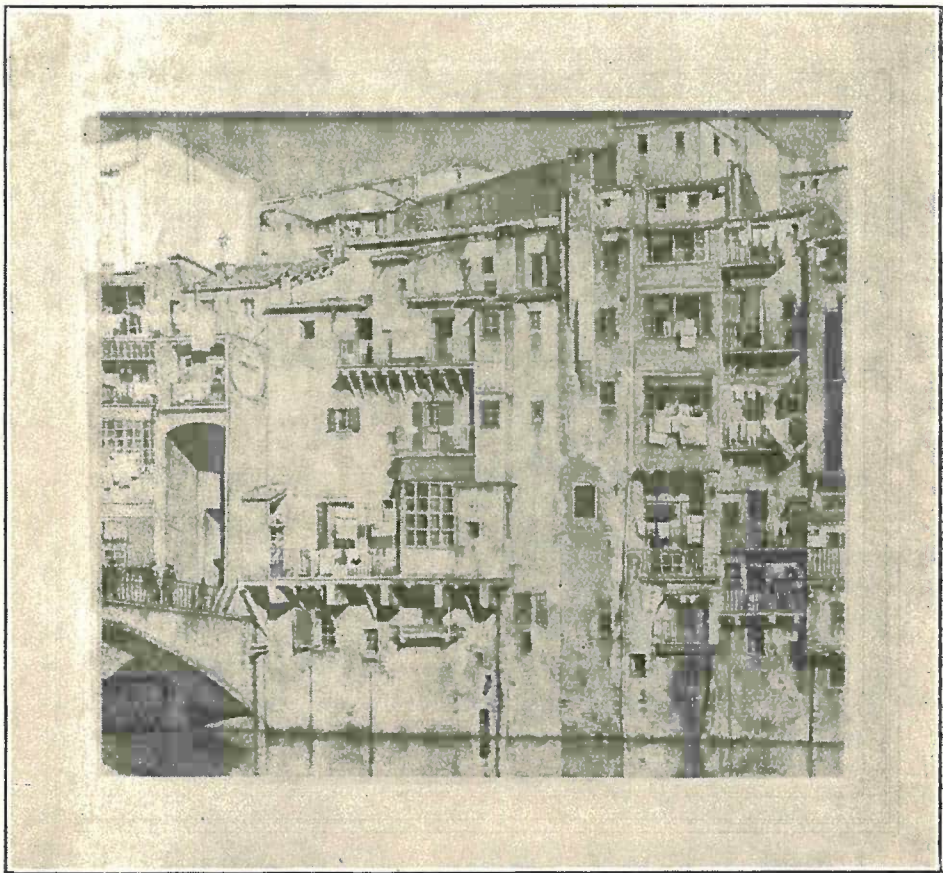
B. E. CHAPPLE		£ s. d.
36.	Tree Trunks in Sunshine - Watercolour	5 5 0
ELLA SPICER		
37.	Shopping - - - - - Watercolour	6 6 0
I. M. COPELAND		
38.	Blue and Gold, Pukekura Park, New Plymouth. Oil Painting	7 7 0
JEAN McKAY		
39.	Ilminster, Somerset - - - Watercolour	5 5 0
JULIA LYNCH		
40.	Janet Rose Stewart Wilson - Oil Painting	—
MARGARET M. WHITT		
41.	Hydrangeas - - - - - Oil Painting	6 6 0
KATHLEEN SALMOND		
42.	The Outdoor Class - - - Watercolour	10 10 0
ALAN ELLIOTT		
43.	After Rain, Marlborough - Watercolour	—
NANCY F. ADKIN		
44.	Margaret - - - - - Watercolour	3 3 0
HILDA J. EDGAR		
45.	Sunlight Among the Trees - Watercolour	5 5 0
W. BASIL HONOUR		
46.	Upper Waimakariri Valley - Oil Painting	25 0 0
E. S. HOPE		
47.	Tussock Uplands - - - - - Gouache	9 9 0
NANCY F. ADKIN		
48.	The Tap Dancer - - - - - Watercolour	3 3 0
DOROTHY H. JONES		
49.	The Homer Valley - - - Watercolour	5 5 0
50.	Cathedral Peaks, Manapouri - Watercolour	5 5 0
ERIC N. GULLY		
51.	Whanokaoa, Tapuaeroa Valley - Watercolour	26 5 0
MARJORIE NAYLOR		
52.	The Old Butts, Early Morning - Watercolour	5 5 0
W. E. RICE		
53.	Pelicans - - - - - Watercolour	7 7 0

ACADEMY OF FINE ARTS ANUNAL EXHIBITION—GALLERY "U"

ENGA WASHBOURN		£ s. d.
54.	Calm Morning, Tarakohe - - - Watercolour	6 6 0
E. S. HOPE		
55.	Across the Hills, Mackenzie Country Watercolour	9 9 0
T. A. McCORMACK		
56.	Still Life - - - - - Watercolour	—
E. S. HOPE		
57.	Lake Alexandrina - - - - - Gouache	9 9 0
JEAN McKAY		
58.	Lane in Somerset - - - - - Watercolour	6 6 0
E. S. HOPE		
59.	The Dry Creek Bed - - - - - Gouache	9 9 0
R. J. WAGHORN		
60.	Buller Country - - - - - Watercolour	7 7 0
E. ROSA SAWTELL		
61.	The Old Oak - - - - - Watercolour	15 15 0
ENGA WASHBOURN		
62.	Morning Mists, Pohara - - - Watercolour	6 6 0
W. BASIL HONOUR		
63.	The Shadowed Hills - - - Oil Painting	10 10 0
B. D. GERARD		
64.	Limestone Quarry, Onekaka - Watercolour	6 6 0
MABEL HILL		
65.	Amalfi from Capuchin Hotel - Watercolour	31 10 0
OLIVIA SPENCER BOWER		
66.	In Arthur's Pass - - - - - Watercolour	7 7 0
ELEANOR HUGHES, R.I.		
67.	The Woodpile - - - - - Watercolour	25 4 0
C. HAY CAMPBELL		
68.	Age - - - - - Watercolour	10 10 0
ENGA WASHBOURN		
69.	Gum Tree, Ligar Bay, Takaka - Watercolour	6 6 0
FANNY RICHARDSON		
70.	Tui on Kowhai - - - - - Watercolour	6 6 0

ACADEMY OF FINE ARTS ANUNAL EXHIBITION—GALLERY "U"

		£	s.	d.
W. BASIL HONOUR				
71.	Autumn in the Hills - - -	Oil Painting	12	12 0
V. A. BROWN				
72.	Brick Works - - - -	Watercolour	5	5 0
MABEL HILL				
73.	The Mill, Woodbridge, Suffolk -	Watercolour	10	10 0
A. ELIZABETH KELLY				
74.	Lake Brunner - - - -	Watercolour	8	8 0
JAMES COOK				
75.	Casas, de C. Onyar - - -	Watercolour	11	11 0
ELEANOR HUGHES, R.I.				
76.	St. Michael's Mount - - -	Watercolour	16	16 0
BESSIE CHRISTIE				
77.	Milford Creek - - - -	Watercolour	3	3 0
H. H. PULLEINE				
78.	Native Bush, Botanical Gardens, Wellington	Watercolour	6	6 0
W. J. REED				
79.	Armageddon - - - -	Watercolour	40	0 0
ELIZABETH WALLWORK				
80.	The Green Halo - - - -	Pastel		
ANN P. HEWITT				
81.	A Morning in Spring - - -	Watercolour		
LILLY SCOTT				
82.	Mountain Stream, Arthur's Pass -	Watercolour	7	7 0
RUSSELL CLARK				
83.	Silver Morning - - - -	Watercolour	5	5 0
R. J. WAGHORN				
84.	Head Waters of the Buller -	Watercolour	4	4 0
A. E. DOUGLAS				
85.	Sunlight in the Park - - -	Watercolour	5	5 0
E. S. HOPE				
86.	Across the Hills, Mackenzie Country -	Gouache	5	5 0
CECIL F. KELLY				
87.	Mount Howe, Oтира - - -	Watercolour	8	8 0



N.Z. ACADEMY OF FINE ARTS ANNUAL EXHIBITION.
 No. 75. "Casas de C. Onyar." - Watercolour by James Cook.

ACADEMY OF FINE ARTS ANNUAL EXHIBITION—GALLERY "X"

	E. S. PYNE			£ s. d.
88.	St. Cross, Winchester	- -	Watercolour	7 7 0
	R. V. R. RANKIN			
89.	Reminiscences	- - - -	Oil Painting	10 10 0
	THANE FIELD			
90.	The Pillar Rose	- - - -	Watercolour	8 8 0
	D. VALLANCE YOUNG			
91.	An Odd Corner, Nelson Street, Auckland		Watercolour	5 5 0
	R. J. WAGHORN			
92.	Frosty Morning	- - - -	Watercolour	4 4 0

X GALLERY "X."

	DUNCAN DARROCH			
93.	Mt. Cook	- - - -	Oil Painting	12 12 0
	WINIFRED BODLE			
94.	Under the Window	- - - -	Oil Painting	5 5 0
	JENNY CAMPBELL, D.A. (Edin.)			
95.	A Country Road	- - - -	Oil Painting	18 18 0
	A. B. BARNS-GRAHAM			
96.	Eleanor	- - - -	Oil Painting	12 0 0
	DUNCAN DARROCH			
97.	Mt. Cook	- - - -	Oil Painting	78 15 0
	C. S. LOVELL SMITH			
98.	Mt. Phipps	- - - -	Oil Painting	10 10 0
	A. B. BARNS-GRAHAM			
99.	Old Man	- - - -	Oil Painting	10 10 0
	J. A. HEGINBOTHAM			
100.	Mixed Cargo	- - - -	Oil Painting	5 5 0
	I. G. EISE			
101.	Afternoon Light, Orakei Basin	- - - -	Oil Painting	5 5 0
	EVELYN POLSON			
102.	Farm by the Sea	- - - -	Oil Painting	7 7 0
	R. J. WAGHORN			
103.	The Clover Stack	- - - -	Watercolour	4 4 0

ACADEMY OF FINE ARTS ANNUAL EXHIBITION—GALLERY "X"

	K. B. ROBSON			
104.	Half Caste Islander Girl	- - - -	Oil Painting	10 10 0
	THANE FIELD			
105.	Wallflowers	- - - -	Watercolour	5 5 0
	GEORGE E. BUTLER			
106.	Bluebells at Kew	- - - -	Oil Painting	14 14 0
	LEDA GRANT			
107.	Iris Stylosa	- - - -	Watercolour	5 5 0
	HILDA J. EDGAR			
108.	Passion Flower	- - - -	Oil Painting	21 0 0
	CHARLES A. WHITMAN			
109.	Trees in Auckland	- - - -	Oil Painting	8 8 0
	MARGARET ANDERSON			
110.	Round the Table	- - - -	Oil Painting	12 12 0
	JOHN W. ASH			
111.	West Coast from Anamata	- - - -	Oil Painting	10 10 0
	EVELYN POLSON			
112.	November Morn	- - - -	Oil Painting	63 0 0
	SYDNEY L. THOMPSON			
113.	Sentinels of the Foothills	- - - -	Oil Painting	26 5 0
	ALICE F. WHYTE			
114.	Auckland Domain	- - - -	Oil Painting	8 8 0
	CARL T. LAUGENSEN			
115.	Miss Joan Hodgson	- - - -	Oil Painting	—
	BEATRICE PARTRIDGE			
116.	Kowhai and Clematis	- - - -	Oil Painting	5 5 0
	R. V. R. RANKIN			
117.	Sunshine and Shade	- - - -	Oil Painting	8 8 0
	R. LOVELL SMITH			
118.	Carnations and Silks	- - - -	Oil Painting	9 9 0
	FRED. R. ALEXANDER			
119.	The Spot Light	- - - -	Oil Painting	10 10 0
	EVELYN POLSON			
120.	School by the Sea	- - - -	Oil Painting	7 7 0
	R. LOVELL SMITH			
121.	Orari Gorge, Mt. Peel	- - - -	Oil Painting	10 10 0
	R. J. WAGHORN			
122.	Pohutukawa, Mt. Maunganui	- - - -	Oil Painting	4 4 0

ACADEMY OF FINE ARTS ANNUAL EXHIBITION—GALLERY "X"

		£	s.	d.
123.	EVELYN POLSON Olivia - - - - - Oil Painting	15	15	0
124.	D. H. JONES Mt. Macpherson - - - - Oil Painting	7	7	0
125.	EVELYN POLSON Mrs. Francis Green with Wendyl - Oil Painting	—		
126.	BEATRICE SEDDON A Mixed Bowl - - - - - Watercolour	10	10	0
127.	F. HUNT Begonias - - - - - Oil Painting	8	8	0
128.	BEATRICE PARTRIDGE Old Time Flowers - - - - Oil Painting	7	7	0
129.	DUNCAN DARROCH Bow Lake, Western Canada - Oil Painting	52	10	0
130.	A. H. O'KEEFE Roses - - - - - Oil Painting	21	0	0
131.	EVELYN POLSON New Zealand Winter - - - - Oil Painting	15	15	0
132.	THANE FIELD Roses - - - - - Oil Painting	6	6	0
133.	W. B. MONTGOMERY The Late Miss May Sherman - Oil Painting	—		
134.	EVELYN POLSON Week End Review - - - - - Oil Painting	—		
135.	THANE FIELD Wood Anemonies - - - - - Watercolour	6	6	0
136.	R. LOVELL SMITH Summer Snow, Mt. Cook - - - Oil Painting	8	8	0
137.	MRS. A. D. CRAWFORD Panel - - - - - Tapestry	—		
138.	SYDNEY L. THOMPSON An Up Country Stockyard - - Gouache	15	15	0
139.	C. S. LOVELL SMITH The Sou'-Wester - - - - - Oil Painting	10	10	0
140.	EVELYN POLSON O'Donnell With His Mother - Oil Painting	15	15	0
141.	CEDRIC SAVAGE Australian Summer - - - - - Oil Painting	12	12	0
142.	A. B. BARNS-GRAHAM Landscape - - - - - Oil Painting	12	0	0

ACADEMY OF FINE ARTS ANNUAL EXHIBITION—GALLERY "W"

		£	s.	d.
143.	K. B. ROBSON Iris - - - - - Oil Painting	7	7	0
144.	SALOME COMBS Interior - - - - - Oil Painting	7	7	0
145.	SYDNEY H. HIGGS The Blue Pool - - - - - Oil Painting	18	18	0

GALLERY "W."

146.	A. B. BARNS-GRAHAM Eleanor - - - - - Drawing	2	2	0
147.	GEORGE WOODS Teutonic Type - - - - - Sanguine Drawing	4	4	0
148.	J. M. THOMASON Estuary of the Ashley River - - Etching	2	10	0
149.	I. G. EISE Timber Yards - - - - - Lino Cut	2	2	0
150.	ALICE F. WHYTE Lime Works, Whangarei - - - - Aquatint	2	2	0
151.	A. B. BARNS-GRAHAM York - - - - - Drawing	2	2	0
152.	GEORGE WOODS Polynesian Type - - - - - Drawing	4	4	0
153.	KATHLEEN SALMOND Flowers - - - - - Watercolour	10	10	0
154.	ENGA WASHBOURN Gray Day, Rangihaeta, Takaka - Watercolour	10	10	0
155.	RUSSELL CLARK Five Oaks Farm - - - - - Watercolour	6	6	0
156.	RUSSELL CLARK Sunday Morning - - - - - Watercolour	6	6	0
157.	R. LOVELL SMITH Lucerne - - - - - Watercolour	7	7	0
158.	BEATRICE SEDDON Flowers - - - - - Watercolour	10	10	0
159.	MABEL HILL James Quinn, Esq. - - - - - Watercolour	26	10	0
160.	ALICE SPICER A Street in Jerusalem - - - - Watercolour	7	7	0
161.	JOHN W. ASH Mt. Egmont - - - - - Watercolour	10	10	0

ACADEMY OF FINE ARTS ANNUAL EXHIBITION—GALLERY "W"

			£	s.	d.
162.	RUSSELL CLARK Black Head Bay	Watercolour	8	8	0
163.	ENGA WASHBOURN Cement Works, Tarakoe	Watercolour	5	5	0
164.	D. VALLANCE YOUNG A Winter Bouquet	Watercolour	5	5	0
165.	GWYNETH RICHARDSON A Cove, Zane Grey's Island	Watercolour	7	7	0
166.	RUSSELL CLARK Light Through Young Pines	Watercolour	8	8	0
167.	Blackhead, Evening	Watercolour	6	6	0
168.	GWYNETH RICHARDSON Tapeka Point, Russell, Bay of Islands	Watercolour	10	10	0
169.	JANE COATS Pink and Gray	Oil Painting	6	6	0
170.	BEATRICE SEDDON Study in White	Watercolour	12	12	0
171.	J. L. PALETHORPE The Kakrapiro Road	Watercolour	8	8	0
172.	GWYNETH RICHARDSON Russell, Bay of Islands	Watercolour	10	10	0
173.	JANE COATS Heathcote Valley	Watercolour	5	5	0
174.	MARCUS KING Afternoon, Houghton Bay	Watercolour	7	7	0
175.	ELLA SPICER Nile Boats	Watercolour	4	4	0
176.	J. L. PALETHORPE Morrah's Island, Otaki Gorge	Watercolour	5	5	0
177.	PEGGY SPICER Westminster Bridge	Watercolour	3	3	0
178.	ELLA SPICER Unloading Bricks	Watercolour	4	4	0
179.	A. S. PATERSON Oo-oo	Watercolour	10	10	0
180.	THANE FIELD Hydrangeas	Watercolour	8	8	0
181.	I. M. COPELAND Autumn Morning, Canterbury	Oil Painting	6	6	0

ACADEMY OF FINE ARTS ANNUAL EXHIBITION—GALLERY "W"

			£	s.	d.
182.	ELLA SPICER English Cottages	Watercolour	4	4	0
183.	BETTY RHIND Magnolias	Watercolour	6	6	0
184.	RUSSELL CLARK Looking Down	Watercolour	5	5	0
185.	BESSIE CHRISTIE Trees	Etching	1	10	0
186.	A. M. DAVIES Fishing	Lino Cut	1	10	6
187.	I. G. EISE First Pensioner's Cottage	Pencil Drawing	1	10	0
188.	HILDA WISEMAN A Bush Track	Lino Cut	1	1	0
189.	ALICE F. WHYTE Selwyn Cottage	Aquatint	2	2	0
190.	A. M. DAVIES Maitai River, Nelson	Lino Cut	1	10	6
191.	F. H. COVENTRY Mrs. J. Vickers	Drawing	15	15	0
192.	Summer Beeches	Drawing	15	15	0
193.	E. HEBER THOMPSON, A.R.E. The Arrival at the Inn - Pen and Wash	Drawing	11	0	0
194.	ALICE F. WHYTE Old Onehunga	Aquatint	3	3	0
195.	E. HEBER THOMPSON, A.R.E. Old Bill	Etching	4	4	0
196.	New Forest Gipsy	Drypoint	4	4	0
197.	Yvonne at Barfleur	Etching	4	15	0
198.	W. J. COOCH Mt. Egmont	Colour Lino Cut	2	2	0
199.	E. HEBER THOMPSON, A.R.E. The Brazier	Drypoint	4	4	0
200.	Diversion	Drypoint	4	4	0
201.	St. Pol du Var	Etching	4	15	0
202.	H. McLINTOCK Winter Willows	Etching	3	3	0
203.	ROLAND HIPKINS, A.R.C.A. Tapai-o-rangi and Matah-o-rangi	Pencil Drawing	8	8	0
204.	E. HEBER THOMPSON, A.R.E. Breton Fisherwoman	Pencil Drawing	8	8	0

ACADEMY OF FINE ARTS ANNUAL EXHIBITION—GALLERY "R"

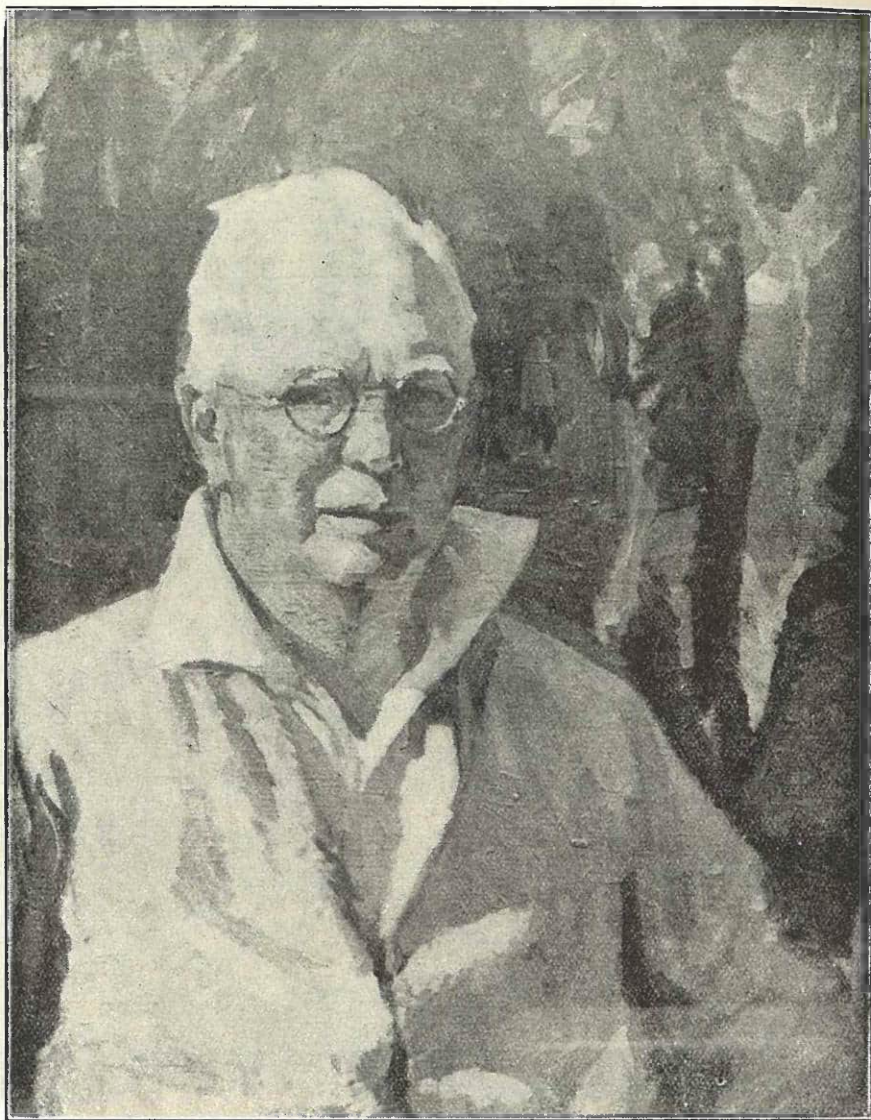
GALLERY "R."

			£	s.	d.
205.	MRS. ROBERT DAVIS	Tapestry			
206.	H. LINLEY RICHARDSON, R.B.A.	Old Maori Chieftainess	68	5	0
207.	W. BASIL HONOUR	Cliffs of the Clutha	25	0	0
208.	A. H. O'KEEFE	Lady in Blue	105	0	0
209.	SYDNEY L. THOMPSON	Altar Rails, Loc Maria Chapelle, Brittany	26	5	0
210.	W. BASIL HONOUR	Glistening Heights	21	0	0
211.	IDA H. CAREY	Mrs. F. Morrison			
212.	W. S. WAUCHOP	Lake Pukaki	21	0	0
213.	M. E. R. TRIPE	The Bush Farm	63	0	0
214.	JULIA B. LYNCH	Mrs. Greer			
215.	S. A. HOLLAND	Valldemosa, Majorca	21	0	0
216.	JULIA B. LYNCH	Portrait			
217.	Mr. A. M. Ongley	Oil Painting			
218.	MARCUS KING	City and Harbour	26	5	0
219.	SYDNEY L. THOMPSON	Purple, Gold and Green	100	0	0
220.	ROLAND HIPKINS, A.R.C.A.	Ohinekuku	73	10	0
221.	SYDNEY L. THOMPSON	The Blue Gate	63	0	0
222.	CECIL F. KELLY	Rapaki	42	0	0
223.	JENNY CAMPBELL	Aratiatia Rapids	81	0	0



N.Z. ACADEMY OF FINE ARTS ANNUAL EXHIBITION.

No. 206. "Old Maori Chieftainess."
Oil Painting by H. Linley Richardson, R.B.A.



N.Z. ACADEMY OF FINE ARTS ANNUAL EXHIBITION.

No. 227. "Head in Sunlight."

Oil Painting by Sydney L. Thompson.

ACADEMY OF FINE ARTS ANNUAL EXHIBITION—GALLERY "T"

		£	s.	d.
CECIL KELLY				
224.	Heathcote Valley - - -	Oil Painting	52	10 0
SYDNEY L. THOMPSON				
225.	A Village Street, Provence -	Oil Painting	105	0 0
W. BASIL HONOUR				
226.	Evening Karakanui Kaikoura Coast -	Oil Painting	52	10 0
SYDNEY L. THOMPSON				
227.	Head in Sunlight - - -	Oil Painting	—	
228.	Peach Trees in Bloom - - -	Oil Painting	31	10 0
RICHARD WALLWORK, A.R.C.A.				
229.	Maui's Fishing - - -	Oil Painting	63	0 0

GALLERY "T."

D. H. JONES				
230.	Mt. Talbot - - -	Oil Painting	10	10 0
CLARA COCKERILL				
231.	Kowhai - - -	Oil Painting	8	8 0
W. H. ALLEN, A.R.C.A.				
232.	Otago Landscape - - -	Oil Painting	25	0 0
CEDRIC SAVAGE				
233.	La Perouse Coast - - -	Oil Painting	18	18 0
R. WALLWORK, A.R.C.A.				
234.	Kaikoura Coast - - -	Oil Painting	9	9 0
W. S. WAUCHOP				
235.	Barren Lands - - -	Oil Painting	12	12 0
JANE COATS				
236.	Mt. Torless - - -	Oil Painting	6	6 0
RICHARD WALLWORK, A.R.C.A.				
237.	Evening Light, Mt. Cook -	Oil Painting	10	10 0
HILDA J. EDGAR				
238.	Sunshine - - -	Oil Painting	—	
JANE COATS				
239.	Terraces and Bush at Kowhai Bush -	Oil Painting	6	6 0
CECIL KELLY				
240.	Governor's Bay Road - -	Oil Painting	8	8 0
241.	Taylor's Mistake, Evening - -	Oil Painting	10	10 0
DAISY OSBORN				
242.	Decoration - - -	Oil Painting	10	10 0

ACADEMY OF FINE ARTS ANNUAL EXHIBITION—GALLERY "T"

	M. E. WHITE		£ s. d.
243.	Winter Sunshine - - -	Oil Painting	8 8 0
	CEDRIC SAVAGE		
244.	Landsdown Bridge, New South Wales	Oil Painting	14 14 0
	DOREEN THWAITES		
245.	Easter Lillies - - -	Oil Painting	10 10 0
	ROLAND HIPKINS		
246.	Rain on the Hills - - -	Oil Painting	84 0 0
	W. S. WAUCHOP		
247.	Flowers in the Garden - - -	Oil Painting	21 0 0
	CEDRIC SAVAGE		
248.	Farm at Cabramatta - - -	Oil Painting	14 14 0
	W. S. WAUCHOP		
249.	Mt. Cook - - -	Oil Painting	12 12 0
	JENNY CAMPBELL		
250.	Lake Taupo - - -	Oil Painting	36 0 0
	DUNCAN DARROCH		
251.	The Home of the Nor'-Wester -	Oil Painting	73 0 0
	MARCUS KING		
252.	A Sunny Hillside - - -	Oil Painting	21 0 0
	DUNCAN DARROCH		
253.	Mt. Cook from Weheka - - -	Oil Painting	18 18 0
	MARCUS KING		
254.	Madame Mantalini - - -	Oil Painting	—
	VIDA ALLMAN.		
255.	Solid Silver Serviette Ring -	Maori design	1 1 0
256.	Solid Silver Serviette Ring -	Maori design	1 1 0
257.	Brass Tray.		
	B. L. EVERETT.		
258.	Brooch - - -	Limoges Enamel	3 3 0
259.	- - -	Limoges Enamel	3 3 0
	DORA C. M. GILBERT.		
260.	Girl's Head - - -	Enamel	4 4 0
261.	Boy's Head - - -	Enamel	4 4 0
	G. A. BISLEY.		
262.	Box covered with Pewter and inlaid Cloisonné Enamel		

ACADEMY OF FINE ARTS ANNUAL EXHIBITION—GALLERY "T."

	B. L. EVERETT.		£ s. d.
263.	Dancers in Moonlight - - -	Limoges Enamel	5 5 0
	MARGARET M. WHITT.		
264.	Nut Bowl - - -	Pottery	1 1 0
265.	Primrose Bowl - - -	Pottery	1 1 0
266.	Blue Glaze Jar - - -	Pottery	1 1 0

SCULPTURE

	JULIA LYNCH.		
267.	Sitio Sitiri - - -	Plaster	
	WILLIAM H. WRIGHT, A.R.C.A.		
268.	Virginia - - -	Plaster	31 10 0
	HARRY HEYWOOD.		
269.	The Tortoise—Garden Ornament -	Concrete	19 19 0
	MARGARET BUTLER.		
270.	W. Page, Esq.—Portrait Bust.		
271.	Portrait of a Young Girl - - -		55 0 0
272.	Pani - - -		30 0 0

LOAN COLLECTION OF RETROSPECTIVE
NEW ZEALAND ART

GALLERY "S."

	THE LATE E. NOEL BARRAUD.		
1.	In the Highlands, Scotland - - -	Water Colour	
	<i>National Gallery Collection.</i>		
	THE LATE C. D. BARRAUD.		
2.	New Zealand River Scene - - -	Water Colour	
	<i>National Gallery Collection.</i>		
	THE LATE C. BLOMFIELD.		
3.	The Pink Terraces - - -	Oil Painting	
	<i>Lent by the Turnbull Library.</i>		
	THE LATE MISS J. WIMPERIS.		
4.	Dunedin from the Hill - - -	Water Colour	
	<i>Lent by Dunedin Public Art Gallery.</i>		
	THE LATE W. M. HODGKINS.		
5.	On the Arthur River - - -	Water Colour	
	<i>Lent by Mrs. J. P. Firth.</i>		
	THE LATE J. C. RICHMOND.		
6.	Te Reinga, Wairoa, Hawkes Bay - -	Water Colour	
	<i>National Gallery Collection.</i>		

LOAN COLLECTION OF RETROSPECTIVE ART IN NEW ZEALAND—
GALLERY "S" and "Q."

- THE LATE JOHN GULLY.
7. Southern Alps - - - - - Water Colour
8. Mount Cook - - - - - Water Colour
National Gallery Collection.
- THE LATE C. D. BARRAUD.
9. The Manawatu - - - - - Water Colour
National Gallery Collection.
- THE LATE J. C. HOYTE.
10. Akaroa Harbour - - - - - Water Colour
National Gallery Collection.
- THE LATE J. C. RICHMOND.
11. Summit of Dent du Midi from Bex, Switzerland Water Colour
National Gallery Collection.
- THE LATE JOHN GULLY.
12. Paekakariki - - - - - Water Colour
National Gallery Collection.
- THE LATE J. C. RICHMOND.
13. Collingwood Goldfields - - - - - Water Colour
National Gallery Collection.
- THE LATE JOHN GULLY.
14. Lake Te Anau - - - - - Water Colour
National Gallery Collection.
- THE LATE W. M. HODGKINS.
15. Milford Sound - - - - - Water Colour
Lent by Mrs. J. P. Firth.
- THE LATE J. C. RICHMOND.
16. The River Clarence and Bridal Track to Nelson Water Colour
National Gallery Collection.
- THE LATE FRANK WRIGHT.
17. The Meeting of the Waipa and Waikato Rivers Water Colour
Lent by the Auckland Art Gallery.
- G. H. ELLIOT
18. The Faery Queen, Mount Spencer Range - Water Colour
Lent by the McDougall Art Gallery.
- THE LATE J. GIBB.
19. New Brighton, 1889 - - - - - Oil Painting
Lent by Mrs. I. Robinson.

GALLERY "Q."

- THE LATE G. P. NERLI.
20. The Goose Girl - - - - - Oil Painting
Lent by Sir Lindo Ferguson.

LOAN COLLECTION OF RETROSPECTIVE ART IN NEW ZEALAND—
GALLERY "Q."

- ELIZABETH WALLWORK.
21. Wm. Trethewey, Sculptor - - - - - Oil Painting
Lent by the Artist.
- H. LINLEY RICHARDSON, R.B.A.
22. Maori Man - - - - - Oil Painting
National Gallery Collection.
- JENNY CAMPBELL.
23. Summer. - - - - - Oil Painting
Lent by the Artist.
- H. LINLEY RICHARDSON, R.B.A.
24. The Birthday Party - - - - - Oil Painting
Lent by the McDougall Art Gallery.
- I. M. COPELAND.
25. Winter Sunshine, Heathcote, Christchurch - Oil Painting
Lent by the Honourable W. Downie Stewart.
- H. LINLEY RICHARDSON, R.B.A.
26. "Taihuri," a Chieftainess of the Waikato Tribe Oil Painting
Lent by D. A. Ewen, Esq., M.B.E.
- EVELYN POLSON.
27. Kashenka - - - - - Oil Painting
Lent by the Artist.
- RICHARD WALLWORK, A.R.C.A.
28. The Marble Shrine - - - - - Oil Painting
Lent by the McDougall Art Gallery.
- MARCUS KING.
29. Bottles - - - - - Oil Painting
Lent by A. Pierard.
- M. E. R. TRIPE.
30. Youth - - - - - Oil Painting
Lent by the Artist.
- ROBERT JOHNSON.
31. Bush Pastures - - - - - Oil Painting
Lent by Sir George Shirtcliffe.
- NUGENT WELCH.
32. Clearing After Rain - - - - - Oil Painting
Lent by the McDougall Gallery.
- A. ELIZABETH KELLY
33. Portrait of a Lady - - - - - Oil Painting
Lent by the Artist.
- NUGENT WELCH.
34. The Coming Storm - - - - - Oil Painting
Lent by the Sarjeant Art Gallery.
- MARCUS KING.
35. The Paddlers - - - - - Oil Painting
Lent by the Artist.

LOAN COLLECTION OF RETROSPECTIVE ART IN NEW ZEALAND—
GALLERY "Q."

- SYDNEY L. THOMPSON.
36. Portrait of a Lady - - - - - Oil Painting
Lent by the Artist.
- V. E. WHITEMAN.
37. A Hill Track - - - - - Oil Painting
Lent by the Artist.
- JAMES COOK.
38. Roman Ruins, Gerona - - - - - Water Colour
Lent by Mrs. D. Menzies.
- THE LATE JAMES SCOTT.
39. Parliament Houses from the Embankment. - Water Colour
Lent by Sir Percy Sargood.
- THE LATE MARGARET STODDART.
40. Estuary Shores - - - - - Water Colour
Lent by Mrs. G. G. G. Watson.
- NUGENT WELCH.
41. The Green Peninsula - - - - - Water Colour
Lent by B. R. Webster, Esq.
- T. A. McCORMACK.
42. September - - - - - Water Colour
Lent by the Artist.
- T. A. McCORMACK.
43. Iris - - - - - Water Colour
Lent by Mr. and Mrs. Harry Atkinson.
- THE LATE D. K. RICHMOND.
44. Sunrise, Lake Waikaremoana - - - - - Water Colour
Lent by Mr. and Mrs. Harry Atkinson.
- JAMES COOK.
45. Gateway at St. Daniels, Spain. - - - - - Water Colour
Lent by Dr. Robert Stout.
- T. A. McCORMACK.
46. A Sunlit Path - - - - - Water Colour
Lent by Mrs. W. B. Sutch.
- MABEL HILL.
47. Still Life - - - - - Water Colour
Lent by Richard Hudson, Esq.
- THE LATE E. MURRAY FULLER.
48. Malindi Market, Zanzibar - - - - - Water Colour
National Gallery Collection.
- RONALD McKENZIE.
49. Craigieburn Ranges from Castle Hill - - - Water Colour
Lent by the Auckland Art Gallery.

LOAN COLLECTION OF RETROSPECTIVE ART IN NEW ZEALAND—
GALLERY "Q."

- THE LATE M. O. STODDART.
50. Spring Blossoms - - - - - Water Colour
Lent by W. F. Hogg, Esq.
- FRANCES HODGKINS.
51. Maori Woman and Child - - - - - Water Colour
National Gallery Collection.
- THE LATE C. N. WORSLEY.
52. Mount Sefton - - - - - Water Colour
Lent by J. H. Fisher, Esq.
- FRANCES M. HODGKINS.
53. By the Brook - - - - - Water Colour
Lent by the Auckland Art Gallery.
- THE LATE JAMES M. NAIRN.
54. Outdoor Sketch - - - - - Water Colour
Lent by E. D. Gore, Esq.
- THE LATE D. K. RICHMOND.
55. Anemones - - - - - Water Colour
Lent by A. D. Carbery, Esq.
- MABEL HILL.
56. Portrait of the late James M. Nairn - - - Water Colour
National Gallery Collection.
- THE LATE JAMES M. NAIRN.
57. Pahautanui - - - - - Water Colour
Lent by Miss M. Newton.
- THE LATE M. O. STODDART.
58. Hooker Glacier - - - - - Water Colour
Lent by Dr. Robert Stout.
- THE LATE D. K. RICHMOND.
59. Dessert in Winter - - - - - Water Colour
Lent by W. S. Wauchop, Esq.
- THE LATE JAMES M. NAIRN.
60. In the Hutt Valley - - - - - Water Colour
Lent by Miss M. Newton.
- THE LATE M. O. STODDART.
61. Spring by the Avon - - - - - Water Colour
Lent by W. S. Wauchop, Esq.
- HARRY ROUNTREE.
62. Sparrows - - - - - Water Colour
Lent by the Auckland Art Gallery.
- THE LATE M. O. STODDART.
63. Mt. Sefton from the Hooker Valley. - - - Water Colour
Lent by Mr. and Mrs. Harry Atkinson.

LOAN COLLECTION OF RETROSPECTIVE ART IN NEW ZEALAND—
GALLERY "Q."

- THE LATE OWEN MERTON.
64. Old Houses - - - - - Water Colour
Lent by Mrs. Merton.
- THE LATE E. MURRAY FULLER.
65. Careening a Dhow, Malindi Beach, Zanzibar Water Colour
Lent by Mrs. E. Murray Fuller.
- THE LATE H. M. GORE.
66. Cracroft Hill, Christchurch - - - - Oil Painting
Lent by Dr. Robert Stout.
- F. McCRACKEN.
67. Portrait of a Lady - - - - - Water Colour
National Gallery Collection.
- ELEANOR HUGHES, R.I.
68. A Country Lane - - - - - Water Colour
Lent by H. Ackland, Esq.
- THE LATE ALFRED W. WALSH.
69. Coastline, Kaikoura - - - - - Water Colour
Lent by Nugent Welch, Esq.
- THE LATE ALFRED W. WALSH.
70. On the Avon, Christchurch - - - - Water Colour
Lent by Dr. Harty.
- RONALD McKENZIE.
71. The Harvest Field - - - - - Water Colour
Lent by Mrs. Minty.
- THE LATE ALFRED W. WALSH.
72. Sketch of Old Thorndon - - - - Water Colour
73. Havelock South - - - - - Water Colour
74. A Birch Clearing, Canterbury - - - Water Colour
75. Scows in Auckland Harbour Water Colour
Lent by Dr. G. W. Harty.
- MAUD SHERWOOD.
76. William Goes to Work - - - - - Water-Colour
Lent by Ernest W. Hunt, Esq.
- ROLAND HIPKINS, A.R.C.A.
77. The Otaki River - - - - - Water Colour
Lent by the Artist.
- MABEL HILL.
78. Fruit Market, via Tiberio, Capri - - Water Colour
Lent by A. H. Allen, Esq.
- OLIVIA SPENCER BOWER.
79. Nikau Palms and Sea - - - - - Water Colour
Lent by the Artist.

LOAN COLLECTION OF RETROSPECTIVE ART IN NEW ZEALAND—
GALLERY "Q."

- THE LATE E. MURRAY FULLER.
80. Arabs' Dhows on Malindi Beach - - Water Colour
Lent by Mrs. E. Murray Fuller.
- NUGENT WELCH.
81. In the Eglington Valley - - - - Water Colour
Lent by D. A. Ewen, Esq., M.B.E.
- IDA H. CAREY.
82. Study - - - - - Oil Painting
Lent by the Artist.
- A. H. O'KEEFE.
83. In a Dark Setting - - - - - Oil Painting
Lent by the Dunedin Public Art Gallery.
- M. E. R. TRIPE.
84. Exile - - - - - Oil Painting
Lent by the Artist.
- B. C. DOBIE.
85. In the Palace Gardens, Malta - - - Oil Painting
Lent by the Artist.
- CECIL F. KELLY.
86. Governor's Bay - - - - - Oil Painting
Lent by the Artist.
- B. C. DOBIE.
87. White Horses - - - - - Oil Painting
Lent by the Artist.
- GRACE BUTLER.
88. Winter Time, Arthur's Pass - - - - Oil Painting
Lent by the Artist.
- THE LATE JAMES SCOTT.
89. The Red Slippers - - - - - Oil Painting
Lent by D. A. Scott, Esq.
- RUSSELL CLARK.
90. Sir Herbert Wilkins - - - - - Oil Painting
Lent by the Napier Art Gallery.
- J. WEEKS.
91. Fruit and Flowers - - - - - Oil Painting
Lent by the Artist.
- ROLAND HIPKINS, A.R.C.A.
92. Turangakuma - - - - - Oil Painting
Lent by the Artist.
- JENNY CAMPBELL, D.A. (Edin.)
93. The Geographer - - - - - Oil Painting
Lent by the Artist.

LOAN COLLECTION OF RETROSPECTIVE ART IN NEW ZEALAND—
GALLERY "Q."

- GEORGE BUTLER.
94. Polperro, Cornwall - - - - - Oil Painting
Lent by the Artist.
- E. SPENCER MACKY.
95. Boy with Kite - - - - - Oil Painting
Lent by J. Victor Macky, Esq.
- R. S. HELLABY.
96. Aratiatia Rapids - - - - - Oil Painting
Lent by the Auckland Art Gallery.
- ROBERT JOHNSON.
97. In French's Forest - - - - - Oil Painting
Lent by Mrs. G. G. G. Watson.
- COLIN LOVELL SMITH.
98. Sunrise, Craigieburn - - - - - Oil Painting
Lent by the Artist.
- MAUD W. SHERWOOD.
99. The Model - - - - - Oil Painting
National Gallery Collection.
- A. H. O'KEEFE.
100. The Defence Minister's Telegram - - - - - Oil Painting
Lent by the Dunedin Public Art Gallery.
- R. PROCTOR.
101. Sunny Italy - - - - - Oil Painting
Lent by the McDougall Art Gallery.
- J. D. CHARLTON EDGAR.
102. Evening, the Clutha Valley from the Pisa - - - - - Oil Painting
Lent by James A. Jenkins, Esq.
- SYDNEY L. THOMPSON.
103. Portrait of Mr. Murray Aynsley - - - - - Oil Painting
Lent by Mrs. Ballantyne.
- CEDRIC SAVAGE.
104. Le Perouse Bay - - - - - Oil Painting
Lent by J. M. Ellis, Esq.
- ELIZABETH WALLWORTH.
105. Mrs. Mae Fox - - - - - Pastel
Lent by the Artist.
- C. HAY CAMPBELL.
106. Green and Gray - - - - - Oil Painting
Lent by the Sarjeant Art Gallery.
- I. G. EISE.
107. Green Hills, Howick - - - - - Oil Painting
Lent by the Artist.

LOAN COLLECTION OF RETROSPECTIVE ART IN NEW ZEALAND—
GALLERY "P."

- RATA LOVELL SMITH.
108. The Waimakariri - - - - - Oil Painting
Lent by the Artist.
- GALLERY "P."
- THE LATE D. K. RICHMOND.
109. Fishing on the Seine - - - - - Oil Painting
Lent by Sir Truby King.
- RAYMOND McINTYRE.
110. Contempt - - - - - Oil Painting
Lent by Miss McIntyre.
- THE LATE C. F. GOLDIE
111. The Last of the Cannibals - - - - - Oil Painting
Lent by Dr. E. B. Gunson.
- A. J. C. FISHER.
112. Portrait - - - - - Oil Painting
Lent by the Artist.
- THE LATE PETRUS VAN DER VELDEN
113. The Old Fisherman - - - - - Oil Painting
Lent by the McDougall Gallery.
- RAYMOND McINTYRE.
114. Lady in Black - - - - - Oil Painting
115. Ruth - - - - - Oil Painting
Lent by Miss McIntyre.
- THE LATE D. K. RICHMOND.
116. Marigolds - - - - - Oil Painting
Lent by Government House, Wellington.
- GEORGE BUTLER.
117. Homeward - - - - - Oil Painting
Lent by the Auckland Art Gallery.
- THE LATE RHONA HASZARD.
118. Morning Calm, Camaret - - - - - Oil Painting
National Gallery Collection.
- LEONARD BOOTH.
119. James Shelley - - - - - Oil Painting
National Gallery Collection.
120. Nude - - - - - Oil Painting
Lent by the McDougall Gallery.
- THE LATE W. A. BOWRING.
121. Self Portrait - - - - - Oil Painting
Lent by Mrs. W. A. Bowring.
- THE LATE W. MENZIES GIBB.
122. A Scotch Hillside - - - - - Oil Painting
Lent by the McDougall Art Gallery.

LOAN COLLECTION OF RETROSPECTIVE ART IN NEW ZEALAND—
GALLERY "P."

- The LATE RHONA HASZARD.
123. The Sea and the Bay - - - - Oil Painting
Lent by the McDougall Art Gallery.
- THE LATE JAMES NAIRN.
124. Summer Idyll - - - - Oil Painting
National Gallery Collection.
- THE LATE PETRUS VAN DER VELDEN.
125. The Poacher - - - - Oil Painting
Lent by Mrs. Ballantyne.
126. Waterfall in Otira Gorge - - - - Oil Painting
Lent by the Dunedin Public Art Gallery.
127. The Story Teller - - - - Oil Painting
Lent by the Suter Art Gallery.
- THE LATE JAMES M. NAIRN
128. Tess - - - - Oil Painting
The National Gallery Collection.
- C. F. GOLDIE.
129. A Noble Relic of a Noble Race - - - - Oil Painting
Lent by the Auckland Art Gallery.
130. A Night in the Whare - - - - Oil Painting
Lent by the Auckland Art Gallery.
- ARCHIBALD F. NICOLL.
131. James McDonald, Esq. - - - - Oil Painting
Lent by Mrs. James McDonald.
- THE LATE D. K. RICHMOND.
132. Zinnias - - - - Oil Painting
Lent by the Sarjeant Art Gallery.
- THE LATE MINA ARNDT.
133. Mother and Child - - - - Oil Painting
Lent by the Suter Art Gallery.
- G. FINEY.
134. Caricature - - - - Pencil Drawing
Lent by Pat Lawlor, Esq.
- A. S. PATERSON.
135. The Encounter - - - - Water Colour
From National Collection.
- HARRY ROUNTREE.
136. The Good Old Days—Bird Nesting - Pen and Ink Drawing
Lent by Pat Lawlor, Esq.
- TOM GLOVER.
137. Carlo Farinetti - - - - Pen and Ink Drawing
Lent by Pat Lawlor, Esq.
- H. LINLEY RICHARDSON, R.B.A.
138. Once Upon a Time - - - - Etching
From National Collection.

LOAN COLLECTION OF RETROSPECTIVE ART IN NEW ZEALAND—
GALLERY "P."

- F. V. ELLIS, A.R.C.A.
139. Moonlight Perugia - - - - Etching
Lent by Nelson Isaac, Esq.
- THE LATE MINA ARNDT.
140. Head of Mrs. Scott - - - - Pencil Drawing
Lent by Mrs. Philip Nathan.
- GEORGE E. BUTLER.
141. Church at Solesmes - - - - Water Colour
From National Collection.
- THE LATE MINA ARNDT.
142. Dr. Frank Hay - - - - Pencil Drawing
Lent by Mrs. F. Hay.
- RICHARD WALLWORK, A.R.C.A.
143. A Cairo Gateway - - - - Etching
Lent by the Artist.
- W. J. COOCH.
144. Wild, Wild and Blinding is his Lightest Note. Colour Etching
Lent by the Artist.
- JAMES COOK.
145. Pencil Drawing
Lent by A. D. Carbery, Esq.
- THE LATE PETRUS VAN DER VELDEN.
146. Pencil Sketch.
From National Collection.
- H. LINLEY RICHARDSON, R.B.A.
147. Study of a Boy's Head - - - - Pencil Drawing
From National Collection.
- JAMES COOK.
148. Forty Winks - - - - Pencil Drawing
From National Collection.
- THE LATE J. C. RICHMOND.
149. Detribalised Natives, Taranaki - - - - Pencil Drawing
From National Collection.
- HESTER FROOD.
150. Countess Weir Bridge - - - - Wash Drawing
From National Collection.
- H. LINLEY RICHARDSON, R.B.A.
151. Pencil Sketch
From National Collection.
- HEBER THOMPSON.
153. Pencil Drawing—Head.
Lent by the Artist.

LOAN COLLECTION OF RETROSPECTIVE ART IN NEW ZEALAND—
GALLERY "P."

- NELSON ISAAC, A.R.C.A.
154. Devon Hills - - - - - Pencil Drawing
- THE LATE PETRUS VAN DER VELDEN.
155. Pencil Sketch.
156. Pencil Sketch.
157. Pencil Sketch
From National Collection.
- THE LATE MINA ARNDT.
158. Jew's Head - - - - - Etching
From National Collection.
- G. FINEY.
159. Caricature - - - - - Drawing
Lent by Pat Lawlor, Esq.
- DAVID LOW.
160. Lecture Hall - - - - - Pen and Ink Drawing
161. The Test - - - - - Pen and Ink Drawing
Lent by Pat Lawlor, Esq.
- G. FINEY.
162. Caricature - - - - - Drawing
Lent by Pat Lawlor, Esq.
- THE LATE W. A. BOWRING.
163. The Coalition Cabinet, 1915 - - - - - Ink and Wash
Lent by Sir George Shirlcliffe.
- G. FINEY.
164. Caricature - - - - - Drawing
Lent by Pat Lawlor, Esq.

TEA ROOM

- WILL LONGSTAFFE.
1. Carillon - - - - - Oil Painting
Presented to the National Collection by Lord Wakefield.
- MICHAEL ANGELO
2. Slave - - - - - Plaster Cast
Lent by Wellington Technical College.
- MICHAEL ANGELO
3. Thought - - - - - Plaster Cast
Lent by Wellington Technical College.

INDEX OF EXHIBITORS IN NEW ZEALAND
ACADEMY OF FINE ARTS
ANNUAL EXHIBITION

- Anderson, Margaret 110
Adkin, Nancy F. 44, 48
Alexander, Fred R. 119
Allen, W. H. 232
Allman, Vida .. 255, 256, 257
Ash, John W. 111, 161
- Barns Graham, A. B.
96, 99, 142, 146, 151
Bisley, G. A. 262
Bodle, Winifred 24, 94
Bower, Olivia Spencer ... 66
Brown, V. A. 9, 11, 72
Butler, George E. 106
Butler, Margaret 270, 271, 272
- Campbell, C. Hay 68
Campbell, Jenny . 95, 223, 250
Carey, Ida H. 211
Chapple, B. E. 36
Christie, Bessie 77, 185
Clark, Russell, 83, 155, 156, 162,
166, 167, 184
Coats, Jane, 169, 173, 236, 239
Cockerill, Clara 231
Cook, James 75
Copeland, I. M. 38, 181
Combs, Salome 144
Cooch, W. J. 198
Coventry, F. H. 191, 192
Crawford, Mrs. A. D. ... 137
- Darroch, Duncan
93, 97, 129, 251, 253
Davies, A. M. 186, 190
Davis, Mrs. Robert 205
Dixon, J. W. 25
Dobie, B. C. 34
Douglas, A. E. 85
- Edgar, Hilda J. .. 45, 108, 238
Eise, I. G. 101, 149, 187
Elliott, Alan 43
Everett, B. L. .. 258, 259, 263
- Field, Thane
33, 90, 105, 132, 135, 180
- Gerard, B. D. 64
Gilbert, Dora 260, 261
Grant, Leda 107
Gully, Eric N. 51
- Heginbotham, J. A. 100
Hewitt, Ann P. 23, 81
Heywood, Harry 269
Higgs, Sydney H., 1, 3, 30, 145
Hill, Mabel . 28, 35, 65, 73, 159
Hipkins, Roland, 203, 220, 246
Holland, S. A. 27, 215
Honour, W. Basil
46, 71, 207, 210, 226
Hope, E. S.
47, 55, 57, 59, 63, 86
Hughes, Eleanor 67, 76
Hunt, F. 127
- Jones, Dorothy H.
49, 50, 124, 230
- Kelly, A. Elizabeth, 29, 74, 241
Kelly, Cecil F., 87, 222, 224, 240
King, Marcus
174, 218, 252, 254
- Lynch, Julia B.
40, 214, 216, 217, 267
- Laugesen, Carl T. 115
- McCormack, T. A.
15, 16, 17, 18, 20, 22, 56
McKay, Jean 39, 58
McLintock, H. 202
Montgomery, W. B. 133
- Naylor, Marjorie 52
- O'Keefe, A. H. 130, 208
Osborne, Daisy 242
- Palethorpe, J. L. ... 171, 176
Palmer, Aileen 31
Partridge, Beatrice . 116, 128
Paterson, A. S. 179



ROBERT McDOUGALL
ART GALLERY
CHRISTCHURCH

V. 3. 2. 3. 0.
INDEX — Continued.

- Polson, Evelyn, 102, 112, 120,
123, 125, 131, 134, 140
Pulleine, H. H. 78
Pyne, E. S. 88
- Rankin, R. V. R. 89, 117
Reed, W. J. 79
Rhind, Betty 183
Rice, W. E. 14, 53
Richardson, Fanny 70
Richardson, Gwyneth
4, 19, 165, 168, 172
Richardson, H. Linley .. 206
Robson, K. B. 104, 143
- Salmond, Kathleen .. 42, 153
Savage, Cedric
141, 233, 244, 248
Sawtell, E. Rosa 61
Seddon, Beatrice, 126, 158, 170
Scott, Lilly 82
Smith, C. S. Lovell 139
Smith, R. Lovell
118, 121, 136, 157
Spicer, Ella
37, 160, 175, 178, 182
Spicer, Peggy 177
- Thomason, J. M. 148
- Thompson, E. Heber, 193, 195,
196, 197, 199, 200, 201, 204
Thompson, Sydney L., 113, 209,
219, 221, 225, 227, 228
Thwaites, Doreen 245
Tiller, Wm. 26
Tripe, M. E. R. 213
Tylee, Marion E. 21
- Waghorn, R. J., 60, 84, 92, 122
Wallwork, Elizabeth 80
Wallwork, Richard
229, 234, 237
Washbourn, Enga
13, 54, 62, 69, 154, 163
Wauchop, W. S.
212, 235, 247, 249
Welch, Nugent, 2, 5, 6, 7, 8, 10
Whitman, Charles A. 109
Whitt, Margaret M.
41, 264, 265, 266
White, M. E. 243
Whyte, Alice F.
32, 114, 150, 189, 194
Wiseman, Hilda 188
Woods, George 147, 152
Wright, W. H. 268
- Young, D. Vallance .. 91, 164

I on 40 - 40 + about 100
2000 and 1000
4 long 1000 each
+ out 1000
available by book except 1000

H W 5 books, but 7"
4 " 2"

