

CENTENNIAL EXHIBITION

OF

INTERNATIONAL and NEW ZEALAND ART

*W. H. G. 25-
3/40*

NATIONAL ART GALLERY

WELLINGTON.

OPENED NOVEMBER 10th, 1939.

EXHIBITION ARRANGED BY THE BOARD OF TRUSTEES OF THE
NATIONAL ART GALLERY AND DOMINION MUSEUM, NEW ZEALAND.

CENTENNIAL EXHIBITION
OF
INTERNATIONAL
AND NEW ZEALAND ART.

NOVEMBER, 1939 — APRIL, 1940.

NATIONAL ART GALLERY

WELLINGTON

NATIONAL ART GALLERY AND DOMINION MUSEUM.
BOARD OF TRUSTEES.

Chairman:

The Prime Minister, the Right Hon. M. J. Savage, P.C., M.P.

Deputy Chairmen:

The Mayor of Wellington (T. C. A. Hislop, Esq., C.M.G.).
The Minister of Internal Affairs (Hon. W. E. Parry, M.P.)
Sir George A. Troup, Kt., C.M.G.

Members:

Sir George Shirtcliffe, K.B.E.
The Under-Secretary of Internal Affairs (J. W. Heenan, Esq., C.B.E., LL.B.).
Representative of the Maori Race, Sir Apirana Ngata, Kt.
The Royal Society of New Zealand—
Dr. P. Marshall, M.A., D.Sc., F.G.S., F.R.G.S., F.R.S.N.Z.
Professor W. P. Evans, M.A., Ph.D., F.R.S.N.Z.
Wellington Harbour Board—
M. A. Elliott, Esq. (Chairman).
C. M. Turrell, Esq.
New Zealand Academy of Fine Arts—
D. A. Ewen, Esq., M.B.E.
G. G. Gibbes Watson, Esq., M.A., LL.B.
Wellington Branch of the New Zealand Institute of Architects (Stanley
W. Fearn, Esq., A.R.I.B.A., F.N.Z.I.A.).
Councillor Thomas Forsyth, Wellington City Council.
Chairman of the Wellington War Memorial Carillon Society (Lieut.-Col.
A. Cowles, V.D.).
Secretary: F. H. Bass, Esq., F.P.A.N.Z., Chartered Secretary (Eng.).
Treasurer: J. R. Deal, Esq.

COMMITTEE OF MANAGEMENT—NATIONAL ART GALLERY:

D. A. Ewen, Esq., M.B.E. (Chairman), Sir George A. Troup, Kt., C.M.G.,
Messrs. A. D. Carbery, C.B., T. D. H. Hall, C.M.G., C. M. Turrell,
Stanley W. Fearn, A.R.I.B.A., F.N.Z.I.A., Nugent Welch, W. S. Wauchop,
M.A. (Wellington), and Sydney L. Thompson, O.B.E. (Christchurch).
Secretary: E. D. Gore, Esq.
Exhibition Selector and Manager: Mrs. M. Murray Fuller.

COUNCIL OF THE NEW ZEALAND ACADEMY:

President: G. Gibbes Watson, Esq., M.A., LL.B.; Vice-Presidents: W.
Fergusson Hogg, Esq., and Ernest W. Hunt Esq., F.C.A. (Aust.);
Members: Mrs. M. Murray Fuller and Messrs. Harry Atkinson, A. D.
Carbery, C.B.E., T. D. H. Hall, C.M.G., LL.B., Roland Hipkins, A.R.C.A.,
Marcus King, Robert Stout, M.D., F.R.C.A.C., W. S. Wauchop, M.A.,
Nugent Welch. Secretary: E. D. Gore, Esq.

FOREWORD.

It was thought fitting by the Board of Trustees of the National Art Gallery of New Zealand that its part in celebrating the cultural advancement of New Zealand during the Centennial Period could best be carried out by bringing the public into direct contact with the works of eminent contemporary painters overseas as well as those of their own country.

Art is, perhaps, more nearly than any other factor the true expression of that evolving outlook on life which constitutes a people's vision, and with this vision lies the people's future. A study of progress in this field of culture is, probably, a surer indication of the growth of a distinctly national genius than any other evidence.

New Zealand in the early days of its art started with a vigorous culture, and with a sound British tradition. To those men and women, who, while battling with nature and building homes to live in, devoted time and attention to the higher things of life, is due our respect and admiration.

It is necessary when living so far from the world's art centres, that we in New Zealand should continue to be brought into contact with the best contemporary art abroad, and thus continue the good work so well commenced.

The European section cannot fail, therefore, to be of great educational value to the public and artists of New Zealand, by providing them with an unequalled opportunity for enjoying and studying the achievements of leaders of art overseas.

To renew our acquaintance with the work of New Zealand-born artists, and to compare their work with that of Europe's best, adds a delightful note of interrogation to this Exhibition. In the New Zealand section, organised by the New Zealand Academy of Fine Arts, the foremost painters of the Dominion are represented by typical examples of their best work.

No group of pictures and sculpture comparable with this Collection has been seen in New Zealand before, and it should prove a source of inspiration from which to reinforce and advance the art which has sprung to life in this country and which has matured in the past 100 years.

M. J. SAVAGE,
Prime Minister of New Zealand.
CHAIRMAN.
National Art Gallery and Dominion
Museum Board of Trustees.

ACKNOWLEDGMENTS.

The thanks of the Board of Trustees are extended to the following who have kindly lent pictures or assisted in other ways:—

His Majesty King George VI.
His Grace the Duke of Devonshire, M.B.E.
The Tate Gallery, Millbank, London.
Mrs. V. Ormond, London.
Messrs. James Bourlet & Sons Ltd., London.
Port of London Authority, London.
Shipping Conference, London.
Wellington Harbour Board.
Mrs. Harry Watson and Dr. Mills for presenting pictures to the National Art Gallery, Wellington.

ABBREVIATIONS.

R.A.—Royal Academician.
A.R.A.—Associate of the Royal Academy.
R.W.S.—Royal Water-colour Society.
R.P.—Royal Portrait Society.
R.O.I.—Royal Institute of Painters in Oils.
R.B.A.—Royal Society of British Artists.
R.I.—Royal Institute of Water-colour Painters.
R.E.—Royal Society of Painter-Etchers and Engravers.
R.S.A.—Royal Scottish Academy.
R.H.A.—Royal Hibernian Academy of Arts.
P.R.W.S.—President Royal Water-colour Society.
N.E.A.C.—New English Art Club.
O.M.—Order of Merit.

CATALOGUE

GREAT BRITAIN.

GALLERY A — OIL PAINTINGS.

1-12.

	Price.
	£ s. d.
W. G. DE GLEHN, R.A., R.W.S.—	
1. Portrait, "Jane Baxter"	900 0 0
SIR D. Y. CAMERON, R.A.—	
2. Stormy Sundown, Skye	262 10 0
HARRY WATSON, R.W.S. (the late).—	
3. The Viaduct	262 10 0
H. DAVIS RICHTER, R.O.I., R.B.A.—	
4. A London Studio Interior	144 0 0
5. The Alcove	185 0 0
REGINALD G. EVES, R.A.—	
6. Kyra Nijinsky	420 0 0
7. The Late Earl Jellicoe, G.C.B., O.M., G.C.V.O., D.C.L., LL.D.	525 0 0
HARRY MORLEY, A.R.A., R.W.S.—	
8. Covent Garden	205 0 0

	£	s.	d.
A. J. MUNNINGS, R.A., R.W.S.—			
9. Horses and Elder Bloom	525	0	0
SIR ARNESBY BROWN, R.A.—			
10. The Fellside	525	0	0
A. J. MUNNINGS, R.A., R.W.S.—			
11. The Whip	420	0	0
T. C. DUGDALE, A.R.A.—			
12. John Gray of Benhall	525	0	0

GALLERY B—OIL PAINTINGS.

13-34.

RONALD GRAY, R.W.S.—			
13. In My Studio	85	0	0
FREDERICK PORTER.—			
14. Snow Scene, Chiswick	73	10	0
HARRY WATSON, R.W.S. (the late).—			
15. Maggie	22	0	0
W. G. DE GLEHN, R.A., R.W.S.—			
16. Autumn on the Hills	615	0	0
HARRY WATSON, R.W.S. (the late).—			
17. The White Dress	Not for Sale.		
ERNEST PROCTER, A.R.A. (the late).—			
18. The Neglectful Shepherd	285	0	0

	£	s.	d.
WILSON STEER, O.M.—			
19. Two Bridges, Knaresborough	350	0	0
E. S. LUMSDEN, R.S.A.—			
20. Harry MacGregor, Esq.	205	0	0
FRANK BRANGWYN, R.A.—			
21. Ponte Rotto	168	0	0
HENRY TONKS, N.E.A.C. (the late).—			
22. The Baby's Bath (Pastel)	350	0	0
ETHELBERT WHITE, R.W.S.—			
23. The Frozen Pond	52	10	0
HARRY WATSON, R.W.S. (the late).—			
24. Resting (Presented by Mrs. Harry Watson to the National Art Gallery, Wellington).			
R. KIRKLAND JAMIESON, R.O.I., R.B.A.—			
25. Blossom in a London Garden	85	0	0
SIR WALTER W. RUSSELL, R.A., R.W.S.—			
26. The Muslin Dress	585	0	0
HARRY MORLEY, A.R.A., R.W.S.—			
27. The Fisherman's Daughter	105	0	0
EMILY COURT, R.O.I.—			
28. The Solent Waters	168	0	0
W. G. DE GLEHN, R.A., R.W.S.—			
29. Figure in Sunlight	440	0	0
S. J. LAMORNA BIRCH, R.A., R.W.S.—			
30. Fallen Trees of Fettener	85	0	0

	£	s.	d.
B. FLEETWOOD WALKER, R.O.I.			
31. The Toilet	420	0	0
FRANK BRANGWYN, R.A.—			
32. Notre Dame de Paris	210	0	0
AMBROSE McEVOY, A.R.A. (the late).—			
33. Marjorie	840	0	0
S. J. LAMORNA BIRCH, R.A., R.W.S.—			
34. April Song	76	15	0

GALLERY C—OIL PAINTINGS

35-57.

DAME LAURA KNIGHT, R.A., R.W.S.—			
35. Edge of the Sea	130	0	0
H. DAVIS RICHTER, R.O.I., R.B.A.—			
36. In a Cornish Inn	60	0	0
SIR D. Y. CAMERON, R.A.—			
37. Fornari	168	0	0
WALTER RICHARD SICKERT.—			
38. It's a Long Way to Tipperary	105	0	0
A. J. MUNNINGS, R.A., R.W.S.—			
39. Whiston	105	0	0
E. HEBER THOMPSON, R.E.—			
40. Lazy Afternoon	55	0	0
A. J. MUNNINGS, R.A., R.W.S.—			
41. East Stonhan, Suffolk	105	0	0

	£	s.	d.
JAMES A. GRANT, R.P., R.E.—			
42. Nude	168	0	0
A. J. MUNNINGS, R.A., R.W.S.—			
43.—Flood in the Stour Valley	105	0	0
HENRY TONKS, N.E.A.C. (the late).—			
44. The Model	185	0	0
A. J. MUNNINGS, R.A., R.W.S.—			
45. Wormingford Mill Pool	105	0	0
HENRY TONKS, N.E.A.C. (the late).—			
46. The Gardener	110	0	0
A. K. BROWNING (Miss), R.O.I.—			
47. Nude	183	15	0
HARRY WATSON, R.W.S. (the late).—			
48. Road to Kinloch, Rannock	22	0	0
A. J. MUNNINGS, R.A., R.W.S.—			
49. Evening at Langham	120	0	0
HARRY WATSON, R.W.S. (the late).—			
50. North Wales	22	0	0
E. S. LUMSDEN, R.S.A.—			
51. Salisbury Craigs	60	0	0
SIR D. Y. CAMERON, R.A.—			
52. Loch Nell	168	0	0
E. S. LUMSDEN, R.S.A.—			
53. The Berwickshire Coast	60	0	0
SIR ARNESBY BROWN, R.A.—			
54. The White Frost	85	0	0

	£	s.	d.
BEATRICE HOW (the late).—			
55. The Penguin	145	0	0
A. K. BROWNING (Miss), R.O.I.—			
56. Fanny Stays in Bed	45	0	0
PHILIP CONNARD, R.A., R.W.S.—			
57. Georgina Sketching	152	10	0

GALLERY D—OIL PAINTINGS.

58-72.

HAROLD HARVEY.—			
58. Yachts	168	0	0
IVON HITCHENS.—			
59. Hay Meadows	63	0	0
60. Spring Flowers	84	0	0
E. WADSWORTH.—			
61. Ouistreham (Water-Colour)	120	0	0
G. EMSLIE OWEN, R.B.A.—			
62. Strange Stirrup	60	0	0
C. W. R. NEVINSON, A.R.A.—			
63. Self Portrait	168	0	0
AVERIL BURLEIGH, R.W.S.—			
64. Spring in the Stubaital, Tyrol	130	0	0
HERBERT A. BUDD, R.O.I.—			
65. The Fiddler at the Fair	130	0	0
ETHELBERT WHITE, R.W.S.—			
66. The Harvest in Sussex	52	10	0

	£	s.	d.
ERNEST PROCTER, A.R.A. (the late).—			
67. Summer Holidays	615	0	0
GUY KORTRIGHT.—			
68. Gerona, Northern Spain	85	0	0
69. Magenta Farm, Monmouthshire	43	0	0
L. S. LOWRY.—			
70. The Roundabout	55	0	0
PAUL NASH.—			
71. The Tower	84	0	0
L. S. LOWRY.—			
72. The Canal Scene	55	0	0

GALLERY E—OIL PAINTINGS.

73-96.

GLYNN PHILPOT, R.A. (the late).—			
73. Man With Red Hair	625	0	0
MARGARET FISHER-PROUT, N.E.A.C., R.W.S.—			
74. The Chess Problem	60	0	0
75. Summer Afternoon	52	10	0
76. The Three Crowns, Ashurst Wood	52	10	0
W. E. WEBSTER, R.P., R.O.I.—			
77. Crystals	130	0	0
WILSON STEER, O.M.—			
78. The Cliff	1,000	0	0
W. E. WEBSTER, R.P., R.O.I.—			
79. Wendy	85	0	0

	£	s.	d.
EMILY COURT, R.O.I.—			
80. Anemones and Tulips	52	10	0
FRANK BRANGWYN, R.A.—			
81. The Mendicant (Water-Colour)	43	0	0
W. P. ROBINS, R.E.—			
82. Ely	52	10	0
DOD PROCTER, A.R.A.—			
83. Sheila among the Ferns	525	0	0
JOHN NASH.—			
84. Whiteleaf	140	0	0
BEATRICE BLAND, N.E.A.C.—			
85. Mixed Flowers	52	0	0
CHARLES CHESTON, R.W.S.—			
86. Dessert	73	10	0
MARGARET FISHER-PROUT, N.E.A.C., R.W.S.—			
87. Interior	43	0	0
DAME LAURA KNIGHT, R.A., R.W.S.—			
88. Through the Window	420	0	0
BEATRICE BLAND, N.E.A.C.—			
89. Yarmouth, Isle of Wight	59	0	0
GLYNN PHILPOT, R.A. (the late).—			
90. Man in White	1,000	0	0
ETHEL WALKER, N.E.A.C.—			
91. Seascape	110	0	0
DAME LAURA KNIGHT, R.A., R.W.S.—			
92. Cottage Bedroom	420	0	0

	£	s.	d.
R. O. DUNLOP, A.R.A.—			
93. The Artist's Wife	68	5	0
C. W. R. NEVINSON, A.R.A.—			
94. Snow at Hampstead	85	0	0
ETHEL WALKER, N.E.A.C.—			
95. Countess of Strathcona	105	0	0
E. S. LUMSDEN, R.S.A.—			
96. Gautama	262	10	0

GALLERY F—PRINTS.

97-128.

JAMES McBEY, R.W.S., R.E.—			
97. Marrakesh (Etching)	13	13	0
HARRY MORLEY, A.R.A., R.W.S., R.E.—			
98. The Arcades, Dieppe (Line Engraving)	6	6	0
STANLEY ANDERSON, A.R.A., R.E.—			
99. The Hedger (Line Engraving)	6	6	0
MALCOLM OSBORNE, R.A., R.E.—			
100. The Fortress, Carcassone (Dry Point)	8	8	0
C. W. TAYLOR, R.E.—			
101. Bridgnorth (Aquatint)	3	15	0
E. S. LUMSDEN, R.S.A., R.E.—			
102. The Preacher (Etching)	11	11	0
E. BLAMPIED, R.E.—			
103. The Old Complaint (Dry Point)	11	11	0

	£	s.	d.
OLIVER HALL, R.A., R.E.—			
104. Mill House at Avila, Spain (Dry Point)	7	7	0
F. L. GRIGGS, R.A., R.E.—			
105. Cockayne (Etching)	15	15	0
SIR MUIRHEAD BONE, LL.D.—			
106. Midnight at Venice (Lithograph)	8	8	0
SIR FRANK SHORT, R.A., R.E.—			
107. The New Moon (Aquatint)	15	15	0
GRAHAM CLILVERD.—			
108. The Pool of London (Dry Point)	4	15	0
LIONEL LINDSAY.—			
109. Church of Santiago, Malaga (Dry Point)	6	6	0
ETHEL GABAIN.—			
110. Clematis (Lithograph)	4	15	0
111. Two Black Bows (Lithograph)	4	15	0
ARTHUR BRISCOE, R.E.—			
112. Command (Etching)	11	11	0
FRANCIS DODD, R.A.—			
113. Spanish Ox-Drivers (Dry Point)	8	8	0
MALCOLM OSBORNE, R.A., R.E.—			
114. Ziercksee (Dry Point)	7	7	0
SIR D. Y. CAMERON, R.A., R.E.—			
115. Aquamanile (Etching)	12	12	0
JOB NIXON, R.W.S., R.E.—			
116. Bull-Fight, Nîmes (Etching)	4	15	0

	£	s.	d.
SIR FRANK SHORT, R.A., R.E.—			
117. The "Street," Whitstable (Etching)	13	13	0
NORMAN WILKINSON.—			
118. The Bothy Pool (Dry Point)	8	8	0
RICHARD PEARSALL.—			
119. Calle del Vicario, Venice (Etching)	3	15	0
W. RUSSELL FLINT, R.A., P.R.W.S., R.E.—			
120. Aragonese String-Makers (Dry Point)	9	9	0
C. W. TAYLOR, R.E.—			
121. St. Mary's in the Cotswolds (Etching)	3	15	0
ALBANY E. HOWARTH, R.E.—			
122. Magdalen Tower and Bridge, Oxford (Etching)	3	15	0
SIR FRANK SHORT, R.A., R.E.—			
123. Fisherman's Castle, Bosham (Etching)	7	7	0
JOHN M. AIKEN.—			
124. Memories (Dry Point)	4	15	0
D. I. SMART, R.E.—			
125. The Thames at Richmond (Dry Point)	6	6	0
FRANCIS DODD, R.A.—			
126. A Woman Asleep (Dry Point)	8	8	0
ALBANY E. HOWARTH, R.E.—			
127. Durham City (Etching)	7	7	0
FRANCIS DODD, R.A.—			
128. General Booth (Dry Point)	7	7	0

GALLERY G — PRINTS.

129-160.

	£	s.	d.
IAN A. J. CHEYNE.—			
129. The Breakwater (Colour-Print)	5	15	0
MABEL ROYDS.—			
130. Shepherds (Colour-Print)	4	15	0
IAN A. J. CHEYNE.—			
131. Kinlochhourn (Colour-Print)	5	15	0
132. Beeches in Glen Lyon (Colour-Print)	5	15	0
133. Fisherman's Church (Colour-Print)	5	15	0
AGNES MILLER PARKER.—			
134. The Fox (Wood-cut)	5	15	0
WILLIAM WILSON.—			
135. Loch Scavaig, Skye (Wood-cut)	6	5	0
AGNES MILLER PARKER.—			
136. Swans in Floodwater (Wood-cut)	5	15	0
WILLIAM WILSON.—			
137. Sutherland (Wood-cut)	6	5	0
AGNES MILLER PARKER.—			
138. Squirrel (Wood-cut)	5	15	0
WILLIAM WILSON.—			
139. The Harrow (Wood-cut)	5	15	0
JAMES McBEY, R.W.S., R.E.—			
140. The "Sarah" Winning the Thames Barge Race (Etching)	13	13	0
CHARLES W. CAIN.—			
141. The Tigris Night (Dry Point)	15	15	0

	£	s.	d.
MALCOLM OSBORNE, R.A., R.E.—			
142. Cahors Cathedral (Dry Point)	10	10	0
HENRY RUSHBURY, R.A., R.W.S., R.E.—			
143. Durham (Dry Point)	12	12	0
144. Gerona (Dry Point)	11	11	0
145. Hyde Park Corner (Dry Point)	8	8	0
ROBERT S. AUSTIN, A.R.A., R.W.S., R.E.—			
146. Girl on the Stairs (Line Engraving)	12	12	0
MALCOLM OSBORNE, R.A., R.E.—			
147. Sir Frank Short, R.A. (Dry Point)	10	10	0
148. Nathaniel Sparks, Esq., (Dry Point)	8	8	0
149. Strathtay in the Tay Valley (Dry Point)	6	15	0
150. Castle under the Hill (Dry Point)	8	8	0
E. S. LUMSDEN, R.S.A., R.E.—			
151. Edinburgh Tenements (Etching)	12	12	0
MALCOLM OSBORNE, R.A., R.E.—			
152. Semur (Dry Point)	8	8	0
JAMES McBEY, R.W.S., R.E.—			
153. The Start. The Thames Barge Race	18	18	0
E. S. LUMSDEN, R.S.A., R.E.—			
154. Morning Worship (Etching and Engraving)	10	10	0
JOB NIXON, R.W.S., R.E.—			
155. The Castle, Josselin, Brittany (Etching)	7	7	0
MABEL ROYDS.—			
156. The House-top (Colour-Print)	4	15	0
157. Bathers (Colour-Print)	4	15	0
158. Grapes (Colour-Print)	4	15	0
159. Goat-herds (Colour-Print)	4	15	0
160. Prickly-Pear (Colour-Print)	4	15	0

GALLERY H—WATERCOLOURS AND DRAWINGS.

161-236.

	£	s.	d.
HARRY MORLEY, A.R.A., R.W.S.—			
161. Corfe Castle	18	18	0
162. The Mill at Woodbridge	22	0	0
163. The Dutch Boat, Woodbridge	22	0	0
164. High-tide, Woodbridge	22	0	0
AMBROSE McEVOY, A.R.A. (the late).—			
165. Profile	85	0	0
HARRY MORLEY, A.R.A., R.W.S.—			
166. Hoisting Sails, Blakeney	22	0	0
167. Shoreham	22	0	0
168. Morston Church, Norfolk	22	0	0
169. Morston, Norfolk	22	0	0
HARRY WATSON, R.W.S., R.O.I. (the late).—			
170. The Creek, Humber Bank	26	10	0
W. RUSSELL FLINT, R.A., P.R.W.S., R.E.—			
171. Three Gipsies at Lauguedoc, Southern France	78	15	0
172. The Isle of May from Pittenween, Fifeshire	40	0	0
173. Loch Nanuamh, Invernesshire	60	0	0
174. Lesser Venice	90	0	0
175. Fort National, St. Malo, Brittany	65	0	0
HARRY WATSON, R.W.S., R.O.I. (the late).—			
176. Near Corfe Castle	26	10	0
W. RUSSELL FLINT, R.A., P.R.W.S., R.E.—			
177. Fontainebleau	45	0	0
LEONARD SQUIRRELL, R.W.S.—			
178. Glencoe	31	10	0
SIR WALTER W. RUSSELL, R.A., R.W.S.—			
179. High Tide, Blakeney	36	15	0

P. H. JOWETT, R.W.S.—

180. Still Life 26 10 0

RONALD GRAY, R.W.S.—

181. At Blakeney 18 18 0

PHILIP CONNARD, R.A., R.W.S.—

182. Swanscombe Reach 33 0 0

P. WILSON STEER, O.M.—

183. Boating at Malden, Essex 63 0 0

GLYNN PHILPOT, R.A. (the late).—

184. Show Case, Coiffeur, St. Paul du Var 78 15 0

P. WILSON STEER, O.M.—

185. On the Blackwater, Essex 63 0 0

PHILIP CONNARD, R.A., R.W.S.—

186. Winter Morning 33 0 0

SIR WALTER W. RUSSELL, R.A., R.W.S.—

187. On the Adur, Shoreham 35 0 0

BERNARD MENINSKY.—

188. Portrait Study 30 0 0

CHARLES CHESTON, R.W.S.—

189. The Bend of the Seine 28 0 0

JOHN SINGER SARGENT, R.A. (the late).—

190. Santa Maria della Salute, Venice.

191. Lake Garda.

192. The Siesta.

193. An Hotel Room (Oil Painting).

194. A Waterfall.

195. Dead Crow.

196. Oxen at Marble Quarries, Carrara.

Lent by Mrs. V. Ormond, London.

	£	s.	d.
T. C. DUGDALE, A.R.A.—			
197. Nude Torso (Pencil Drawing)	36	15	0
A. K. BROWNING (Miss).—			
198. In the Garden (Pencil Drawing)	28	0	0
ROBERT AUSTIN, A.R.A., R.W.S.—			
199. Quinta and Clare (Drawing)	22	10	0
200. Model Painting	33	0	0
201. Model Resting	28	0	0
202. Study of Two Girls	22	10	0
T. C. DUGDALE, A.R.A.—			
203. Study (Pencil Drawing)	36	15	0
A. K. BROWNING (Miss), R.O.I.—			
204. Panties (Drawing)	28	0	0
205. The Bath (Drawing)	28	0	0
SIR MUIRHEAD BONE, LL.D.—			
206.—Approaching Split, Preparing a Boat	43	0	0
MARGARET FISHER-PROUT, N.E.A.C., R.W.S.—			
207. Summer Flowers	18	18	0
SIR CHARLES HOLMES (the late).—			
208. Dark Morning, Gothenburg	22	0	0
E. HEBER THOMPSON, R.E.—			
209. Young Ballet Dancer (Drawing)	33	0	0
CECIL A. HUNT, R.W.S.—			
210. The Firth of Lorne	35	0	0
FRANK BRANGWYN, R.A.—			
211. Ludlow Castle	85	0	0

	£	s.	d.
CECIL A. HUNT, R.W.S.—			
212. The White Sail	43	0	0
E. HEBER THOMPSON, R.E.—			
213. Retrospect	33	0	0
HARRY WATSON, R.W.S., R.O.I. (the late). —			
214. Scottish Burn	26	10	0
AMBROSE McEVOY, A.R.A. (the late).—			
215. Melisande	85	0	0
CLAUDE MUNCASTER, R.W.S.—			
216. Sketch near Ben Nevis	15	15	0
P. H. JOWETT, R.W.S.—			
217. Near Shaftesbury, Dorset	22	10	0
BERNARD MENINSKY.—			
218. River in Caithness	28	0	0
P. H. JOWETT, R.W.S.—			
219. Middle Mill, South Wales	22	10	0
CHARLES CHESTON, R.W.S.—			
220. Dieppe (Oil Sketch)	15	15	0
R. O. DUNLOP, A.R.A.—			
221. On the Thames near Sunbury Lock (Oil Sketch)	15	15	0
GLYNN PHILPOT, R.A. (the late).—			
222. Group of Figures, Carnival, Nice	78	15	0
FREDERICK PORTER.—			
223. The Thames near Kew	28	0	0
CHARLES CHESTON, R.W.S.—			
224. Dieppe (Oil Sketch)	15	15	0

	£	s.	d.
PURVES FLINT, R.W.S.— 225. Pont-sur-Yonne	26	5	0
P. H. JOWETT, R.W.S.— 226. Interior	22	10	0
PURVES FLINT, R.W.S.— 227. On the Beach	26	5	0
JAMES A. GRANT, R.P., R.E.— 228. Nude	18	18	0
AUGUSTUS JOHN.— 229. Composition	31	10	0
SIR MUIRHEAD BONE, LL.D.— 230. In the Cantabrian Mountains	16	10	0
PROFESSOR RANDOLPH SCHWABE, N.E.A.C., R.W.S.— 231. Nudes	18	18	0
BERNARD MENINSKY— 232. Study of Nude	22	10	0
SIR MUIRHEAD BONE, LL.D.— 233. The Plaza Night Guadalupe	52	10	0
HENRY MOORE— 234. Drawing for Sculpture	18	18	0
FRANK DOBSON.— 235. Study for Sculpture	22	10	0
HENRY MOORE.— 236. Drawing for Sculpture	18	18	0

GALLERY I—OIL PAINTINGS.
237-263.

	£	s.	d.
CHARLES M. GERE, R.A., R.W.S.— 237. A Roman Outpost, Haresfield Beacon	168	0	0
HELEN MACKENZIE, R.O.I.— 238. Old-Fashioned Flowers	45	0	0
DOD PROCTER, A.R.A.— 239. Mother and Child	525	0	0
ADRIAN ALLINSON, R.B.A., R.O.I.— 240. Dorset on Stour	43	0	0
THE LADY PATRICIA RAMSAY.— 241. Fruit in Old Pewter Dish	65	0	0
IAIN McNAB, R.O.I., R.E.— 242. Sailing Ships, Garda	150	0	0
ADRIAN ALLINSON, R.B.A., R.O.I.— 243. Cotswold Blooms	168	0	0
LEONARD PHILPOT.— 244. The Chestnut Tree	168	0	0
FRANCIS DODD, R.A.— 245. The Roundabout 246. Old Spain	600	0	0
300	0	0	
SYDNEY LEE, R.A.— 247. Cafe du Commerce	262	10	0
FOREST HEWIT.— 248. Rothiemurchus Forest	85	0	0
JULIUS OLSSON, R.A.— 249. The Summer Storm	585	0	0

	£	s.	d.
R. C. WEATHERBY.—			
250. Young Noel	68	0	0
J. KYNERSLEY KIRBY.—			
251. The Travellers' Rest	130	0	0
CLARE ATWOOD.—			
252. Still Life	52	10	0
FRANCIS McCracken.—			
253. Arum Lilies	35	0	0
254. In the Studio	85	0	0
E. HEBER THOMPSON, R.E.—			
255. The Balcony	55	0	0
HELEN MACKENZIE, R.O.I.—			
256. Mid-Summer	130	0	0
A. HOUTHUSEN.—			
257. Glynn	43	0	0
LEONARD PHILPOT.—			
258. Chinese Restaurant	60	0	0
ADRIAN ALLINSON, R.B.A., R.O.I.—			
259. St. Mervyn, Cornwall	31	10	0
HAROLD HARVEY.—			
260. Top of the Bus	262	10	0
LEONARD PHILPOT.—			
261. West River Craft	60	0	0
HELEN MACKENZIE, R.O.I.—			
262. Cottage Roses	18	18	0
C. H. H. BURLEIGH, R.O.I.—			
263. Cagnes	52	10	0

GALLERY J—OIL PAINTINGS.

264-270.

WORKS LENT BY THE TATE GALLERY,
MILLBANK, LONDON.

	£	s.	d.
MARK GERTLER (the late).—			
264. Old Women.			
STANLEY SPENCER.—			
265. The Red House.			
SIR WALTER W. RUSSELL, R.A.—			
266. Mr. Minney.			
SIR WILLIAM ORPEN, K.B.E., R.A. (the late).—			
267. Portrait of Dame Madge Kendal.			
AUGUSTUS JOHN.—			
268. Rachael.			
SIR WILLIAM NICHOLSON.—			
269. Lady in Furs.			
SIR WILLIAM ORPEN, K.B.E., R.A. (the late).—			
270. The Model (Watercolour).			

GALLERY K—PRINTS.

271-282.

JAMES A. GRANT, R.P., R.E.—			
271. Mother and Child (Lithograph)	6	15	0
FRANK BRANGWYN, R.A.—			
272. Barges (Etching)	8	8	0

	£	s.	d.
JAMES A. GRANT, R.P., R.E.—			
273. The Bath (Lithograph)	6	15	0
FRANK BRANGWYN, R.A.—			
274. Canal, Dixmude (Etching)	8	8	0
JAMES A. GRANT, R.P., R.E.—			
275. Maternity (Lithograph)	6	15	0
FRANK BRANGWYN, R.A.—			
276. Tour de Faure (Etching)	10	10	0
277. Mills, Montreuil (Etching)	10	10	0
IAIN McNAB, R.O.I., R.E.—			
278. Nature Morte (Wood Engraving)	7	7	0
FRANK BRANGWYN, R.A.—			
279. Dixmude (Lithograph)	18	18	0
280. Strand on the Green (Etching)	6	15	0
JAMES A. GRANT, R.P., R.E.—			
281. Group au Plage (Dry Point)	6	15	0
FRANK BRANGWYN, R.A.—			
282. Head of a Fisherman (Etching)	6	15	0

GALLERY L — OIL PAINTINGS.
283-322.

DOD PROCTER, A.R.A.—			
283. Baby in Long Clothes	435	0	0
A. HOUTHUESEN.—			
284. Still Life	43	0	0

	£	s.	d.
ZOE PROVIS.—			
285. The Lady of Wallop	52	10	0
FRANK BRANGWYN, R.A.—			
286. The Alcantara Bridge	168	0	0
REGINALD G. BRUNDRIT, R.A.—			
287. Snow in the North	130	0	0
288. Through Lythe, Wharfdale	525	0	0
CLARE ATWOOD.—			
289. Old Lambeth	35	0	0
EMILY COURT, R.O.I.			
290. Silvery June	33	0	0
HERBERT A. BUDD, R.O.I.—			
291. Winds	385	0	0
292. Lavender in Bloom	55	0	0
EMILY COURT, R.O.I.—			
293. Autumn	33	0	0
R. C. WEATHERBY.—			
294. The Chestnut Mare	105	0	0
JULIUS OLSSON, R.A.—			
295. Waiting for the Gun	168	0	0
ZOE PROVIS.—			
296. Near Killarney	36	15	0
ETHEL GABAIN, R.O.I., R.B.A.—			
297. Peonies	35	0	0
298. Yellow Curtain	52	10	0
RICHARD EURICH.—			
299. The Old Mill, Fawley	52	10	0

	£	s.	d.
W. P. ROBINS, R.E.— 300. Vale of Aylesbury	16	16	0
LUCY KEMP-WELCH, R.O.I., R.I.— 301. The Crest of the Downs	145	0	0
BEATRICE BLAND, N.E.A.C.— 302. Fishing Boat Returning, Nice	52	0	0
OLIVER HALL, R.A., R.W.S.— 303. Swaledale, Yorkshire	120	0	0
HARRY FIDDLER, R.O.I. (the late).— 304. Ploughing (Presented by Dr. Mills, Edinburgh, to the National Art Gallery, Wellington).			
OLIVER HALL, R.A., R.W.S.— 305. Greenholme Bridge, Westmoreland	120	0	0
S. J. LAMORNA BIRCH, R.A., R.W.S.— 306. Green Waters of the Clutha	155	0	0
ALEXANDER JAMIESON, R.O.I. (the late).— 307. Rotterdam	22	0	0
MARY McEVOY.— 308. Flowers	68	5	0
W. P. ROBINS, R.E.— 309. Fowler Piece	16	16	0
W. J. STEGGLES.— 310. Dorset Landscape	18	18	0
ALEXANDER JAMIESON, R.O.I. (the late).— 311. Old House, Pont de L'Arche	22	0	0
312. The Mill Farm	262	10	0

	£	s.	d.
H. DAVIS RICHTER, R.O.I. R.B.A.— 313. Tranquility at Polperro	31	10	0
H. STEGGLES.— 314. Woodham, Ferrers	18	18	0
CECIL JAMIESON, R.P.— 315. Head of a Girl	168	0	0
CONSTANCE BRADSHAW.— 316. A Suburban Window	36	15	0
ETHEL GABAIN, R.O.I., R.B.A.— 317. Red Ribbon	52	10	0
R. KIRKLAND JAMIESON, R.O.I., R.B.A.— 318. Essex Farm	85	0	0
J. KYNNEERSLEY KIRBY.— 319. Hunters' Moon	85	0	0
R. O. DUNLOP, A.R.A. 320. Walton on Thames	60	0	0
W. RUSSELL FLINT, R.A., P.R.W.S.— 321. Nude (Tempera)	190	0	0
EMILY AITKEN, R.O.I.— 322. Decoration	73	10	0

GALLERY M — WATERCOLOURS AND DRAWINGS.

323-398.

GERALD ACKERMANN, R.I.— 323. St. Paul's	22	0	0
SYDNEY LEE, R.A.— 324. Malham Village	40	0	0

	£	s.	d.
OLIVER HALL, R.A., R.W.S.—			
325. Grey Day, Bardsey Sands	22	10	0
GERALD ACKERMANN, R.I.—			
326. Lillington, Dorset	22	0	0
S. J. LAMORNA BIRCH, R.A., R.W.S.—			
327. Mill in the Just Valley	18	18	0
328. April Day on the Wharf	42	0	0
329. Derelict	18	18	0
OLIVER HALL, R.A., R.W.S.—			
330. Moreton Church, Norfolk	22	10	0
ELEANOR HUGHES, R.I.—			
331. Study of Trees	18	18	0
AVERIL BURLEIGH, R.W.S.—			
332. In the Cotswolds	28	10	0
ELEANOR HUGHES, R.I.—			
333. Spring's First Garment	35	0	0
LEONARD SQUIRREL, R.W.S.—			
334. The Orwell at Ipswich	22	0	0
PROFESSOR RANDOLPH SCHWABE, N.E.A.C., R.W.S.—			
335. The Gate House, Cerne Abbas	22	10	0
CLAUDE MUNCASTER, R.W.S.—			
336. Noel Famau in Denbighshire	12	12	0
GERALD ACKERMANN, R.I.—			
337. Rochester	22	0	0

	£	s.	d.
HENRY RUSHBURY, R.A., R.W.S.—			
338. Connemara	26	10	0
339. A Roman Street	31	10	0
340. Gerona, Catalonia	35	0	0
GERALD ACKERMANN, R.I.—			
341. Sailing at Blakeney	22	0	0
CLAUDE MUNCASTER, R.W.S.—			
342. Elton in Derbyshire	15	15	0
ELEANOR HUGHES, R.I.—			
343. Spring Comes to Trewoofe	26	10	0
CHARLES CHESTON, R.W.S.—			
344. The Citadel, Dover	15	15	0
FRANCES HODGKINS.—			
345. Bridge at Ponterwyd	26	10	0
346. Ruins	52	10	0
FREDERICK PORTER.—			
347. Aibury Heath	28	0	0
ETHELBERT WHITE, R.W.S.—			
348. Woodland Study	22	0	0
CECIL A. HUNT, R.W.S.—			
349. St. Cirque-la-Popie	86	0	0
ETHELBERT WHITE, R.W.S.—			
350. Woodland Path	22	0	0
PROFESSOR RANDOLPH SCHWABE, N.E.A.C., R.W.S.—			
351. Dover	22	10	0
PAUL NASH.—			
352. Shipyard, Rye	40	0	0

	£	s.	d.
ETHELBERT WHITE, R.W.S.—			
353. Barges on the Hard, Pinmill	20	0	0
LESLIE BADHAM, R.B.A.—			
354. Paddling (Pastel)	18	18	0
LUCY KEMP-WELCH, R.O.I., R.I.—			
355. Spring	50	0	0
HESTER FROOD.—			
356. Mannin, Connemara	11	11	0
ALBERT RUTHERSTON, R.W.S.—			
357. The House in the Wood, Gloucestershire	26	0	0
358. Portrait of a Girl	26	0	0
359. Reclining Nude	15	15	0
HESTER FROOD.—			
360. Carrying Peat, Connemara	11	11	0
A. HOUTHUESEN.—			
361. Sea Shell (Drawing)	18	18	0
LESLIE BADHAM, R.B.A.—			
362. The Quay Side (Pastel)	18	18	0
GERALD ACKERMANN, R.I.—			
363. The End of the Race, Blakeney	16	10	0
364. The Broad Walk, Kensington Gardens	22	0	0
S. J. LAMORNA BIRCH, R.A., R.W.S.—			
365. St. Michael's Mount, Penzance	18	18	0
366. Penzance from Newlyn Harbour	18	18	0
W. P. ROBINS, R.E.—			
367. Blythburgh	18	18	0

	£	s.	d.
RONALD GRAY, R.W.S.—			
368. Evening, Bosham	18	18	0
369. A Cold Day at Villars	18	18	0
GERALD ACKERMANN, R.I.—			
370. The Rickmansworth Canal	22	0	0
371. Blakeney Channel, Norfolk	16	10	0
HESTER FROOD.—			
372. Ponte Vecchio, Florence (Drawing)	14	14	0
W. P. ROBINS, R.E.—			
373. Faversham	18	18	0
JAMES McBEY.—			
374. Sale from Rabat	25	0	0
375. Tetuan Arabs	21	0	0
376. Gipsy Encampment, Niebla	25	0	0
377. Road to Tangier	25	0	0
378. The Market, Marrakesh	25	0	0
SIR MUIRHEAD BONE, LL.D.—			
379. Flowing Tide, Cromer	31	10	0
HENRY TONKS, N.E.A.C. (the late).—			
380. A Farmyard Scene	52	10	0
AVERIL BURLEIGH, R.W.S.—			
381. A Cornish Farm	18	18	0
ROWLAND SUDDABY.—			
382. Flowers and Fruit	18	18	0
LESLIE HUNTER, R.S.A. (the late).—			
383. Cottage, Largo	31	10	0
R. KIRKLAND JAMIESON, R.O.I., R.B.A.—			
384. A Yorkshire Village	21	0	0

	£	s.	d.
ROWLAND SUDDABY.—			
385. Anemones on a Round Table	35	0	0
R. KIRKLAND JAMIESON, R.O.I., R.B.A.—			
386. An Ash Tree	21	0	0
ROWLAND SUDDABY.—			
387. White Cottage, Yorkshire	12	12	0
388. Fishing Boat, Hastings	31	10	0
LESLIE HUNTER, R.S.A. (the late)			
389. Pittenween	43	0	0
HARRY WATSON, R.W.S. (the late).—			
390. Study (Drawing)	18	18	0
HERBERT A. BUDD, R.O.I.—			
391. Nude (Drawing)	22	10	0
HARRY WATSON, R.W.S. (the late).—			
392. Study (Drawing)	18	18	0
ROBERT S. AUSTIN, A.R.A., R.W.S.—			
393. Girl in a Coat (Drawing)	21	0	0
JAMES A. GRANT, R.P., R.E.—			
394. The Drawing Lesson (Drawing)	36	15	0
ROBERT S. AUSTIN, A.R.A., R.W.S.—			
395. Students (Drawing)	18	18	0
FRANCIS DODD, R.A.—			
396. Lord Rutherford (Drawing)	57	15	0
ROBERT S. AUSTIN, A.R.A., R.W.S.—			
397. Model and Friend (Drawing)	33	0	0
AUGUSTUS JOHN			
398. Study of a Nude Woman (Drawing)	31	10	0

GALLERY N — OIL PAINTINGS.
399-420.

	£	s.	d.
MARGARET FISHER-PROUT, N.E.A.C., R.W.S.—			
399. Flower Piece	76	15	0
BEATRICE BLAND, N.E.A.C.—			
400. Buckingham Palace	68	5	0
VANESSA BELL.—			
401. The Garden in April	43	0	0
BEATRICE BLAND, N.E.A.C.—			
402. Petunias	34	15	0
W. J. LEECH, R.H.A.—			
403. Anemones	36	15	0
404.—Fruit	145	0	0
405. Boats at Nice	36	15	0
JOHN COPLEY, R.B.A.—			
406. Caress	55	0	0
BEATRICE BLAND, N.E.A.C.—			
407. Flower Piece (with river background)	76	15	0
EMILY AITKEN, R.O.I.—			
408. Kent Cobs, and Asters	43	0	0
R. O. DUNLOP, A.R.A.—			
409. Therese	76	15	0
CONSTANCE BRADSHAW, R.O.I., R.B.A.—			
410. Sussex Downs	52	10	0
ETHEL WALKER, N.E.A.C.—			
411. Flower Piece	130	0	0

	£	s.	d.
S. J. PEPLOE, R.S.A. (the late).—			
412. Iona	135	0	0
FREDERICK PORTER.—			
413. Beech Wood	76	15	0
LESLIE HUNTER, R.S.A. (the late).—			
414. Marigolds	85	0	0
W. J. LEECH, R.H.A.—			
415. Aubyn Glynn	155	0	0
S. J. PEPLOE, R.S.A. (the late).—			
416. Still Life	105	0	0
DUNCAN GRANT.—			
417. Landscape, Provence	155	0	0
418. Anemones in a Spanish Jug	76	15	0
VANESSA BELL.—			
419. Hyacinth	65	0	0
DUNCAN GRANT.—			
420. The Green Kimona	168	0	0

GALLERY O — PRINTS.

421-450

LIONEL LINDSAY.—			
421. Facade of the Institute, Salamanca (Etching)	4	15	0
W. W. BURGESS.—			
422. Cheyne Walk, Chelsea (Etching)	3	15	0
JOHN COPLEY.—			
423. Begnanti (Lithograph)	4	15	0

	£	s.	d.
H. STUART BROWN.—			
424. Harvest Field, Ely: Evening (Etching)	6	6	0
W. L. WYLLIE.—			
425.—The "Northampton" (Scouts Training Ship) (Dry Point)	8	8	0
E. S. LUMSDEN, R.S.A.—			
426. Portrait of James McBey (Etching)	7	7	0
E. BLAMPIED.—			
427. Un Precieux (Dry Point)	11	11	0
A. BRISCOE.—			
428. The Dreamer (Etching)	6	6	0
G. B. BROCKHURST, R.A., R.E.—			
429. The Black Silk Dress (Etching)	33	0	0
SIR D. Y. CAMERON.—			
430. Drimnin (Dry Point)	15	15	0
G. B. BROCKHURST, R.A., R.E.—			
431. The Amberley Boy (Etching)	28	0	0
SIR MUIRHEAD BONE, LL.D.—			
432. Railway Sheds, Marseilles (Dry Point)	18	18	0
E. J. DETMOID.—			
433. Into the Promised Land (Etching)	6	6	0
C. H. BASKETT.—			
434. The City (Aquatint)	4	15	0
A. BRISCOE.—			
435. Alastor (Etching)	7	7	0

	£	s.	d.
DOROTHY WOOLARD (Miss).—			
436. Piccadilly Circus, 1921 (Dry Point)	3	15	0
W. P. ROBINS. R.E.—			
437. Houghton Mill, on the Test, Hants. (Dry Point)	4	15	0
STANLEY ANDERSON, A.R.A., R.E.—			
438. Willow Copping (Engraving)	4	15	0
W. WESTLEY MANNING.—			
439. Evening on the Nile, El Fashan (Aquatint)	7	7	0
STANLEY ANDERSON, A.R.A., R.E.—			
440. Blind Musician (Engraving)	6	6	0
JOB NIXON, R.W.S., R.E.—			
441. Montmajour, Arles (Dry Point)	7	7	0
SIR GEORGE CLAUSEN, R.A.—			
442. Cottage Among Trees (Etching)	7	7	0
STANLEY ANDERSON, A.R.A., R.E.—			
443. Hurdle Makers (Engraving)	6	6	0
JOHN COPLEY.—			
444. Storm Clouds (Lithograph)	6	6	0
H. STUART BROWN.—			
445. The Ouse, near Ely (Etching)	6	6	0
ETHEL GABAIN.—			
446. Le Venitienne (Lithograph)	6	6	0
HEDLEY FITTON.—			
447. La Porte de la Cadenne, St. Emilion (Etching)	11	11	0
C. S. CHESTON.—			
448. Sedgemoor (Etching)	3	15	0

	£	s.	d.
FRANK BRANGWYN, R.A.—			
449. Old Houses on the Tiber (Etching)	4	15	0
P. F. GETHIN.—			
450. Musicians. (Etching)	4	15	0
GALLERY P—PRINTS.			
451-483.			
RICHARD PEARSALL.—			
451. Gathering Storm, Toledo (Etching)	3	15	0
JOHN COPLEY.—			
452. Ballerine (Lithograph)	4	15	0
WINIFRED AUSTEN.—			
453. Mating Time (Dry Point)	4	15	0
ALBANY HOWARTH.—			
454. Street in Montreuil (Dry Point)	4	15	0
JOHN M. AIKEN.—			
455. On the Stour at Dedham (Etching)	4	15	0
ROBERT S. AUSTIN, A.R.A., R.W.S.—			
456. Girls on a Balcony (Line Engraving)	10	10	0
W. L. WYLLIE.—			
457. Fishing Boats off Ryde (Dry Point)	4	15	0
D. I. SMART, R.E.—			
458. Victoria Embankment, from County Hall (Etching)	6	6	0
MURRAY M. TOD.—			
459. In Perugia (Etching)	4	15	0

	£	s.	d.
ALBANY HOWARTH.—			
460. Richmond Castle, Yorkshire (Etching)	6	6	0
ROBERT AUSTIN, A.R.A., R.W.S.—			
461. Summer Night (Line Engraving)	9	0	0
DAVID ROBERTSON.—			
462. The Traghetto, Venice (Etching)	8	8	0
ROBERT AUSTIN, A.R.A., R.W.S.—			
463. Woman Praying (Line Engraving)	36	15	0
D. I. SMART, R.E.—			
464. St. Nicholas Tower, La Rochelle (Etching)	6	6	0
ROBERT AUSTIN, A.R.A., R.W.S.—			
465. The Bellringer's Wife (Line Engraving)	8	8	0
D. I. SMART, R.E.—			
466. Toledo Bridges (No. 7) (Etching)	4	15	0
H. GORDON MARLOW.—			
467. North Porch, Chartres (Etching)	8	8	0
K. M. CLAYTON (Miss).—			
468. The Frozen Pond (Dry Point)	3	15	0
ROBERT AUSTIN, A.R.A., R.W.S.—			
469. Young Mother (Line Engraving)	8	8	0
C. S. CHESTON.—			
470. The Windrush Farm (Etching)	4	15	0
JOSEPH GRAY.—			
471. Playhouse Close, Edinburgh (Dry Point)	8	8	0
E. BLAMPIED.—			
472. En Promenade (Etching)	11	11	0

	£	s.	d.
IAN STRANG, R.E.—			
473. Puento Nuovo Rondo (Etching)	6	6	0
E. BLAMPIED.—			
474. Fairy Tales (Dry Point)	9	9	0
WILLIAM WILSON.—			
475. St. Monance (Wood Engraving)	5	15	0
SIR MUIRHEAD BONE, LL.D.—			
476. Shrimp Boats, Great Yarmouth (Dry Point)	15	15	0
SYDNEY LEE, R.A.—			
477. The Street with a Tower (Aquatint)	7	7	0
K. M. CLAYTON (Miss).—			
478. Feeding-Time (Etching)	4	15	0
ROBERT S. AUSTIN, A.R.A., R.W.S.—			
479. The Belfry Steps (Line Engraving)	8	8	0
480. Study of a Girl's Head (Line Engraving)	13	13	0
WILLIAM STRANG, R.A.—			
481. Brick Field, Segovia, Spain (Etching)	8	8	0
F. S. LUMSDEN, R.S.A., R.E.—			
482. Canongate Washing (Etching)	8	8	0
JOHNSTONE BAIRD.—			
483. A Shop Tower, London (Etching)	3	15	0

BELGIUM

GALLERY Q.
484-499.

	£	s.	d.
ALBERT SAVERYS.— 484. Paysage	80	0	0
HIPPOLYTE DAEYE.— 485. Fillette en Rouge	165	0	0
HENRI LOGELAIN.— 486. Quartier Leopold	90	0	0
PIERRE PAULUS.— 487. Paysage Industriel	125	0	0
ALBERT SAVERYS.— 488. Paysage	105	0	0
PIERRE PAULUS.— 489. Paysage Industriel	125	0	0
ALBERT SAVERYS.— 490. Paysage	80	0	0
JEAN VAN DEN EECKHOUDT.— 491. Hiver	80	0	0
492. La Sieste	90	0	0
GEORGE MORREN.— 493. La Baton de Rouge	90	0	0
EDGAR TYTGAT.— 494. La Femme en Vert	110	0	0
ADOLPHE KELLER.— 495. Sous les Pommiers en Fleurs	105	0	0

	£	s.	d.
EDGAR TYTGAT.— 496. Vue de Woluwe St. Lambert	105	0	0
ISIDORE OPSOMER.— 497. Marine et Bateau (Watercolour)	90	0	0
JACQUES MAES.— 498. Torse de Jeune Fille	90	0	0
ISIDORE OPSOMER.— 499. Les Raisins	90	0	0

FRANCE

GALLERY S—OIL PAINTINGS.
500-518.

PAUL VERA.— 500. Tulipes et Anemones	100	0	0
JACQUES DENIER.— 501. Brume a Port-Navalo	40	0	0
ROLAND OUDOT.— 502. Marine a Hossegor	75	0	0
MAURICE ASSELIN.— 503. Paysage de Niege	65	0	0
LUCIEN ADRION.— 504. Marche a Sanary	55	0	0
LUCIEN SIMON.— 505. Le Tueur de Cochons	65	0	0
HENRI DE WAROQUIER.— 506. Nature Morte	55	0	0

	£	s.	d.
CONSTANTIN TERECHKOVITCH.—			
507. La Canerne	65	0	0
MAURICE ASSELIN.—			
508. Fleurs	65	0	0
RAOUL DUFY.—			
509. Venise la Dogana (Watercolour)	85	0	0
LUCIEN ADRIEN.—			
510. Pont St. Cloud, Paris	55	0	0
ANDRE VILLEBOEUF.—			
511. Quai des Esclavons, a Venice	55	0	0
HENRI DE WAROQUIER.—			
512. Eglise d'Epiais	175	0	0
EDWARD LE BAS.—			
513. Rye Harbour	52	10	0
514. Fruit and Flowers	68	0	0
PAUL VERA.—			
515. Boquet Jaune	60	0	0
E. OTHON FRIESE.—			
516. Nu accroupi	65	0	0
JACQUES DENIER.—			
517. Fenetre sur le Porte	55	0	0
E. OTHON FRIESE.—			
518. Le Baigneur	65	0	0

FRANCE (Continued).

£ s. d.

GALLERY T—OIL PAINTINGS.

519-530.

R. LIMOUSE.—			
519. Interieur Arabe	55	0	0
ALBERT MARQUET.—			
520. Port d'Alger	260	0	0
LUCIEN SIMON.—			
521. Spahis Marocaine	65	0	0
K. X. ROUSSEL.—			
522. Le Modele	175	0	0
ALBERT MARQUET.—			
523. La Frette-Seine	130	0	0
ROLAND OUDOT.—			
524. La Route	75	0	0
ANDRE VILLEBOEUF.—			
525. Paysage de la Creuse	55	0	0
CONSTANTIN TERECHKOVITCH.—			
526. Rue de Village	55	0	0
EDMOND HEUZE.—			
527. Le Loge au Cirque	130	0	0
MAURICE DE VLAMINCK.—			
528. Marine	130	0	0
529. Le Degel	135	0	0
MAURICE UTRILLO, V.—			
530. L'Eglise de Montheil	260	0	0

SCULPTURE HALL.

531-562.

GREAT BRITAIN.

	£	s.	d.
HENRY MOORE.—			
531. Figure Carving in Boxwood, 1912	47	5	0
FRANK DOBSON.—			
532. Morning (Bronze)	120	0	0
CHARLES WHEELER, A.R.A.—			
533. Head of Spring (Gilt Bronze)	180	0	0
534. The Artist's Wife, as Demeta (Marble)	262	10	0
MURIEL WHEELER.—			
535. Charles Wheeler, A.R.A. (Lead)	170	0	0
HERBERT W. PALLISER.—			
536. Giraffe (Bronze)	60	0	0
GILBERT BAYES.—			
537.—King Cophetua and the Beggarmaid (Bronze)	183	15	0
ADRIAN ALLINSON, R.B.A., R.O.I.—			
538. Nude (Wood)	85	0	0
RICHARD GARBE, R.A.—			
539. Wind and Waves (Pierced Relief, Bronze)	262	10	0
SIR WILLIAM REID DICK, R.A.—			
540. Madonna and Child (Bronze)	525	0	0
H. PARR.—			
541. Flower Seller (Glazed Earthenware, Staffordshire)	17	0	0

£ s. d.

MISS PARNELL.—

542. Her Grace the Duchess of Devonshire (China Statuette). Lent by His Grace the Duke of Devonshire, M.B.E.

H. PARR.—

543. A Faun and Hare (Glazed Stoneware; High Temperature) 17 0 0

GILBERT BAYES.—

544. The Bathing Cap (Coloured Salt Glaze) 36 15 0

545. The Lily Maid (Coloured Salt Glaze) 90 0 0

ADRIAN ALLINSON, R.B.A., R.O.I.—

546. Peasant Madonna (Glazed Earthenware) 26 10 0

H. PARR.—

547. Nathaniel Sparks (Bronze) 130 0 0

HERBERT W. PALLISER.—

548. Head of a Girl (Bronze) 205 0 0

CHARLES WHEELER, A.R.A.—

549. Mother and Child (Portland Stone) 535 0 0

A. F. HARDIMAN, A.R.A.—

550. Head of an Italian Workman (Bronze) 130 0 0

FRANK DOBSON.—

551. Mary (Bronze) 168 0 0

GILBERT BAYES.—

552. The Pigeon (Coloured Salt Glaze) 15 15 0

553. Wisdom (Coloured Salt Glaze) 15 15 0

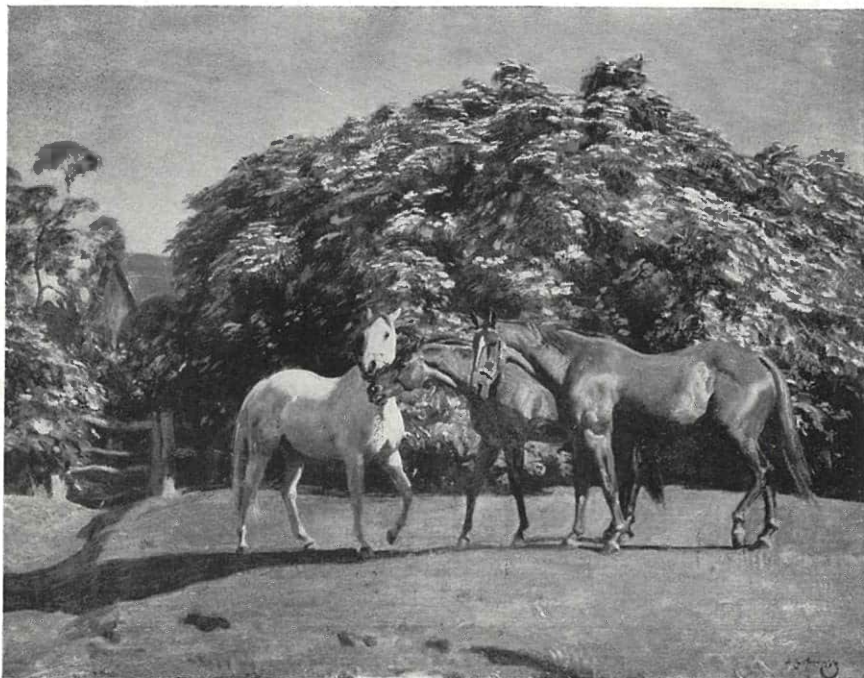
ADRIAN ALLINSON, R.B.A., R.O.I.—

554. Faun (Glazed Earthenware) 11 11 0

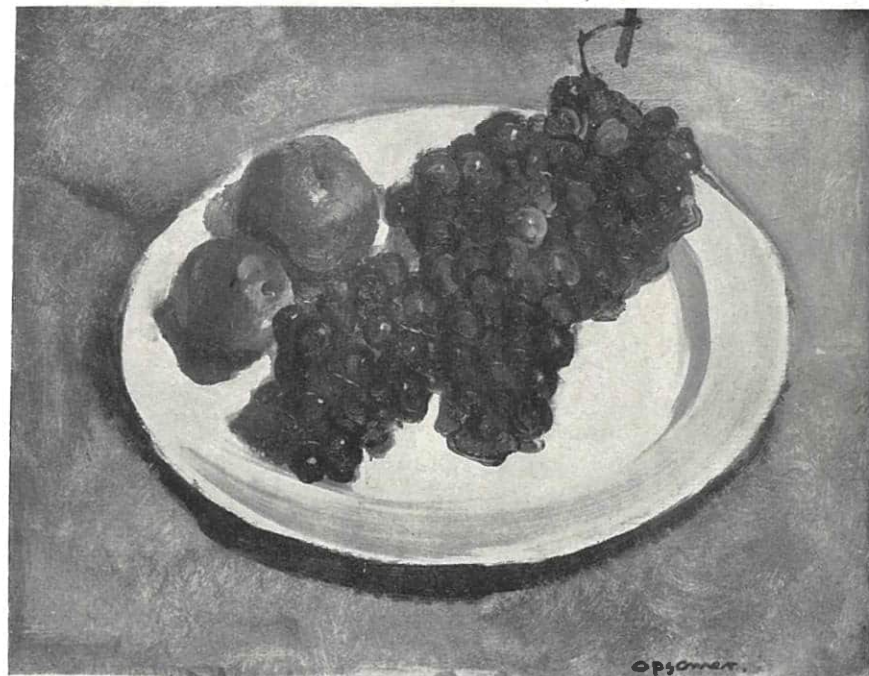
	£	s.	d.
GILBERT BAYES.—			
555. The Drake	15	15	0
H. PARR.—			
556. Professor Edouard Lanteri (Bronze Medallion)	10	10	0
ERIC GILL, A.R.A.—			
557. Canterbury Tales, Vol. 1: Decoration for the Reeve's Tale (Wood Block)	22	0	0
GILBERT BAYES.—			
558. The Crested Diver (Coloured Salt Glaze)	15	15	0
559. The Mermaid (Coloured Salt Glaze)	110	0	0
560. The Crow (Coloured Salt Glaze)	15	15	0
ERIC GILL, A.R.A.—			
561. Illustration for the Book of the Four Gospels (Wood Block)	22	0	0
HENRY MOORE.—			
562. Seated Figure, 1912 (Concrete)	52	10	0



7. "The Late Earl Jellicoe, G.C.B., O.M., G.C.V.O.,
D.C.L., LL.D." Oil Painting by Reginald G. Eves, R.A.



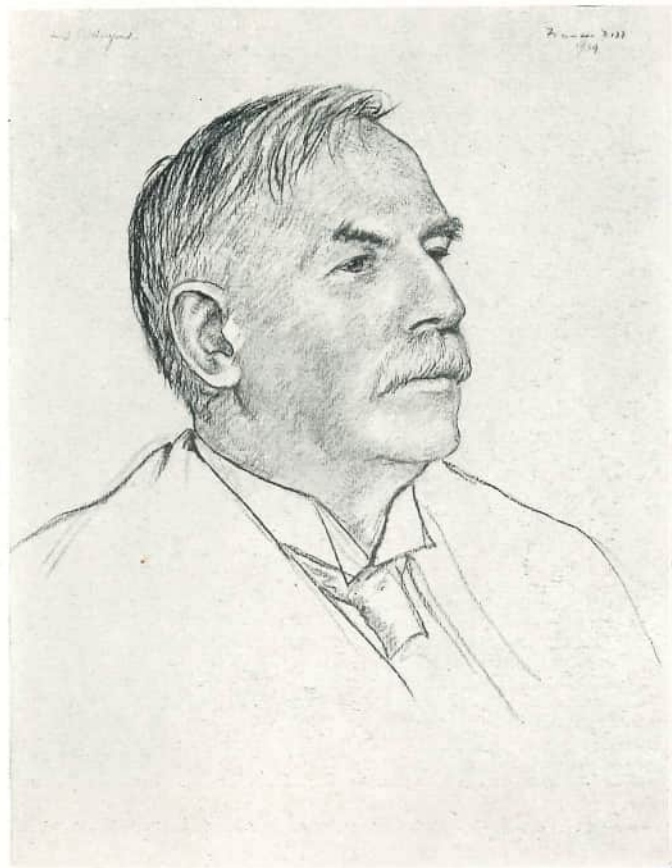
9. "Horses and Elder Bloom." Oil Painting by A. J. Munnings, R.A., R.W.S.



499. "Les Raisins." Oil Painting by Isidore Opsomer.



88. "Through the Window." Oil Painting by
Dame Laura Knight, R.A., R.W.S.



396. "Lord Rutherford." Drawing by
Francis Dodd, R.A.



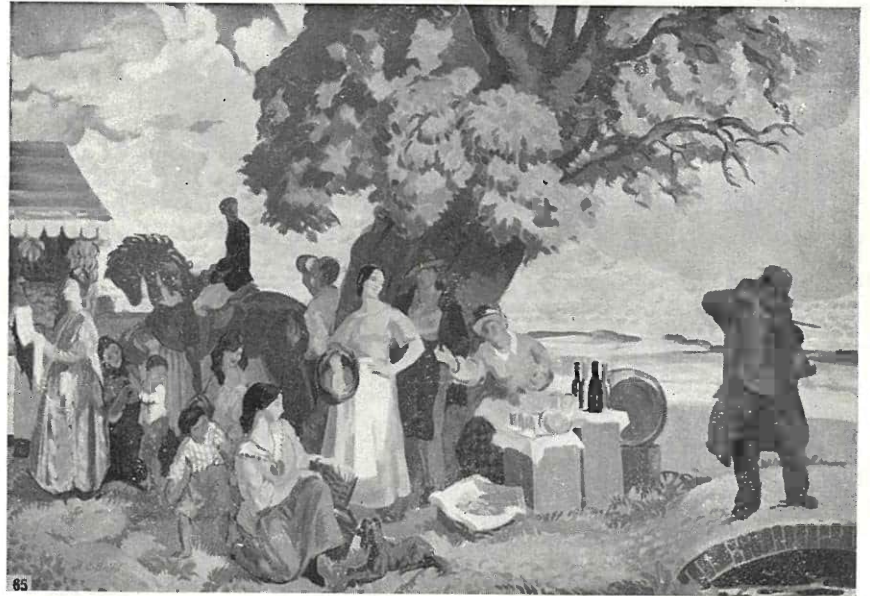
529. "Le Degel." Oil Painting by Maurice de Vlaminck.



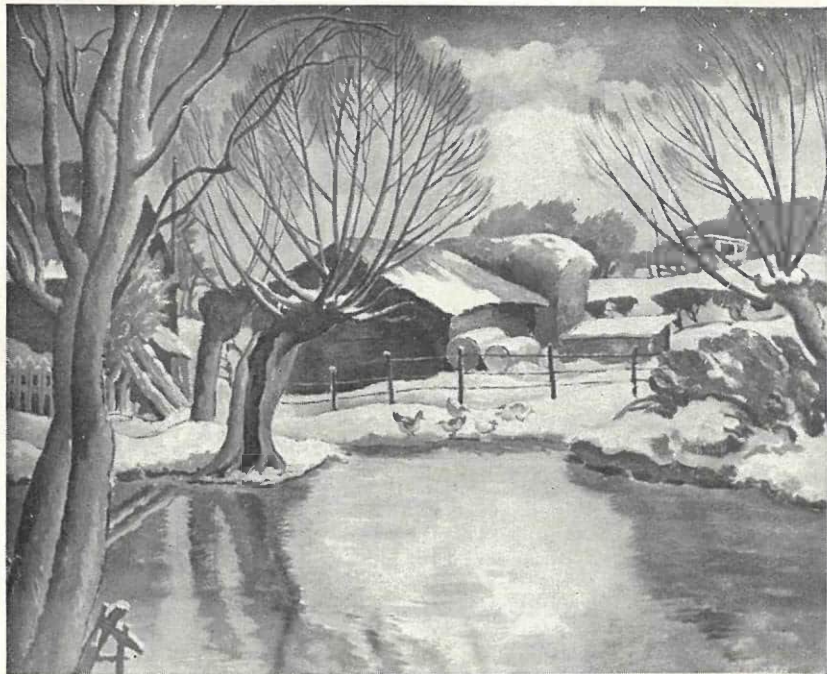
404. "Fruit." Oil Painting by W. J. Leech, R.H.A.



188. "Portrait Study." Water-colour
by Bernard Meninsky.



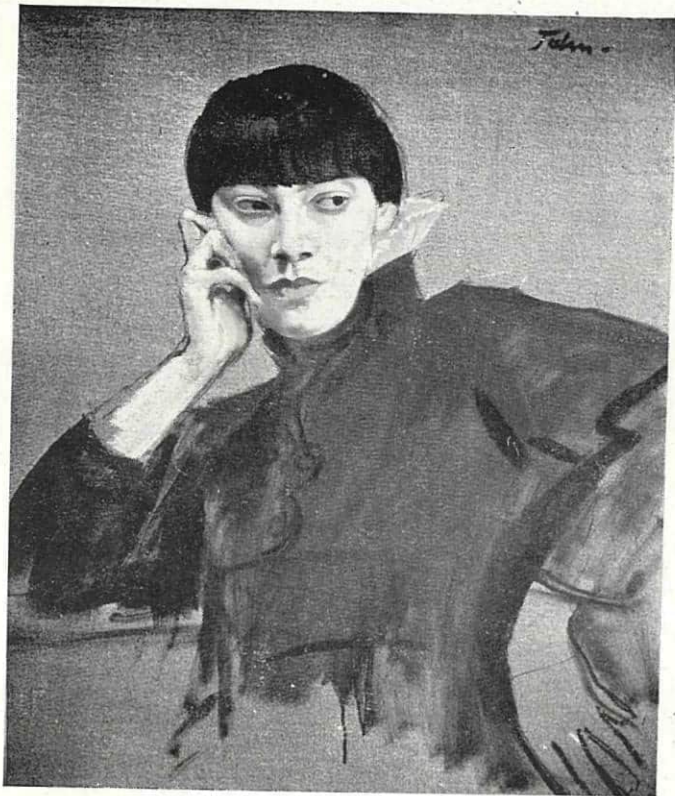
65. "The Fiddler at the Fair." Oil Painting by
Herbert A. Budd, R.O.I.



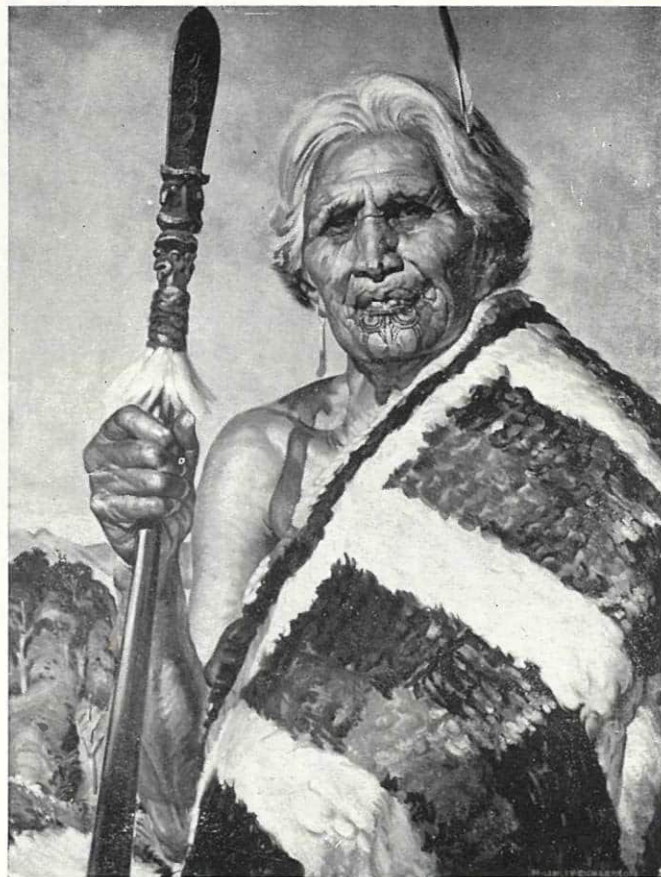
23. "The Frozen Pond." Oil Painting by
Ethelbert White, R.W.S.



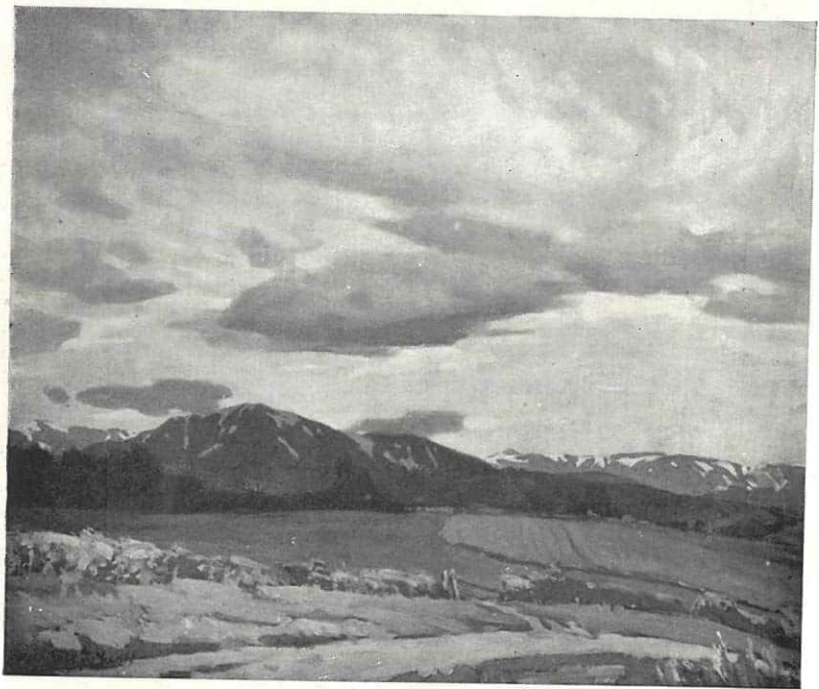
267. "Portrait of Dame Madge Kendal." Oil Painting
by the late Sir William Orpen, K.B.E., R.A.
Lent by the Tate Gallery, London.



268. "Rachael." Oil Painting by Augustus John.
Lent by the Tate Gallery, London.



8. "Old Maori Woman with Taiaha." Oil Painting by
H. Linley Richardson, R.B.A.



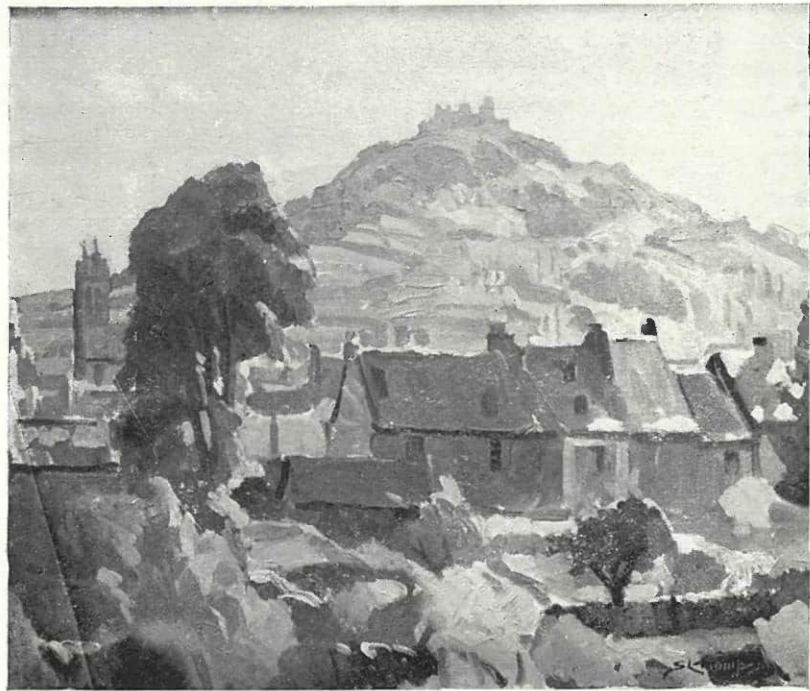
56. "South Canterbury." Oil Painting by Archibald F. Nicoll.



148. "Chinese Pottery." Water-colour by T. A. McCormack.



14. "Blue and Silver." Oil Painting by
A. Elizabeth Kelly, C.B.E.



107. "Castle Ruins, Espallion, Southern France." Oil Painting
by Sydney L. Thompson, O.B.E.



75. "Self Portrait." Oil Painting by the late
M. E. R. Tripe.

NEW ZEALAND ACADEMY OF FINE ARTS

GALLERY I — OIL PAINTINGS.
1-119.

	Price.
	£ s. d.
KATHLEEN SALMOND.—	
1. Farm in Spring	31 10 0
RATA LOVELL-SMITH.—	
2. Maruia	15 15 0
SALOME COOMBS.—	
3. Still Life	4 4 0
H. LINLEY RICHARDSON, R.B.A.—	
4. In the New Zealand Bush	75 0 0
MARJORIE NAYLOR.—	
5. Riwaka River	10 10 0
RATA LOVELL-SMITH.—	
6. Winter on the Waimakariri	31 10 0
DUNCAN DARROCH.—	
7. Mt. de la Beche	26 5 0
H. LINLEY RICHARDSON, R.B.A.—	
8. Old Maori Woman with Taiaha	110 0 0
IDA H. CAREY.—	
9. Magnolias	7 7 0
MARCUS KING.—	
10. Landscape, South Island	37 16 0

	£	s.	d.
D. H. JONES.—			
11. Cliffs, Caversham	10	10	0
DUNCAN DARROCH.—			
12. In the Highlands, Argyllshire	18	18	0
RATA LOVELL-SMITH.—			
13. Sunflowers	15	15	0
A. ELIZABETH KELLY, C.B.E.—			
14. Blue and Silver	Not For Sale		
MRS. R. RANKIN.—			
15. The Old English Teapot	10	10	0
IDA BIRCH.—			
16. The Panelled Room	12	12	0
BEATRICE PARTRIDGE.—			
17. New Zealand Native Flowers	7	7	0
OWEN R. LEE.—			
18. The Torlesse Range	26	5	0
19. On a Heathcote Valley Farm	10	10	0
A. ELIZABETH KELLY, C.B.E.—			
20. A Maori Belle	105	0	0
M. WHITT.—			
21. Falling Anemones	8	8	0
R. WALLWORK, A.R.C.A.—			
22. Maui's Fishing	63	0	0
OWEN R. LEE.—			
23. Old Sheds	9	9	0

	£	s.	d.
MARCUS KING.—			
24. Spring Morning, Wellington	20	0	0
H. H. TOMBS.—			
25. Cottage, Cambridge, England	8	8	0
BESSIE CHRISTIE.—			
26. Autumn Flowers	4	10	0
EDITH M. COLLIER.—			
27. Mrs. Pohanui, Kawhia	Not for Sale.		
A. T. CRAVEN.—			
28. H. Spear, Esq.	Not for Sale.		
CARL T. LAUGESEN.—			
29. The Poi Dancer	15	15	0
JULIA LYNCH.—			
30. L. T. Watkins, Esq.	Not for Sale.		
PHYLLIS BETHUNE.—			
31. Pukaki River	8	8	0
D. H. JONES.—			
32. Riverton	10	10	0
C. M. PATERSON.—			
33. Late Afternoon	7	7	0
DUNCAN DARROCH.—			
34. In Tropical Seas	26	5	0
JAMES FITZGERALD.—			
35. The Green Shed	15	15	0

	£	s.	d.
HILDA EDGAR.—			
36. Sunshine	36	5	0
MRS. M. HARKNESS.—			
37. Mrs. Gerald Evatt	10	10	0
MARION TYLEE.—			
38. Flower Study	8	8	0
RATA LOVELL-SMITH.—			
39. Winter Morning	15	15	0
M. E. R. TRIPE (the late).—			
40. Exile	157	10	0
R. WALLWORK, A.R.C.A.—			
41. The Inland Kaikouras, Evening	10	10	0
JOHN CAM. DUNCAN.—			
42. Spring near Tauranga	42	0	0
COLIN LOVELL-SMITH.—			
43. At the Fifteenth Mile, Nelson	10	10	0
A. ELIZABETH KELLY, C.B.E.—			
44. Snow Scene	10	10	0
45. Spring Time, Heathcote Valley	6	6	0
46. Miss Edith May	262	10	0
E. M. COLLIER.—			
47. Old Charlie	Not for Sale.		
COLIN LOVELL-SMITH.—			
48. Amuri Bluff	10	10	0

	£	s.	d.
CECIL F. KELLY.—			
49. The Kowai River	10	10	0
50. Mt. Torlesse	63	0	0
51. Malt Houses at Heathcote	8	8	0
52. Mt. Cook from Tasman Valley	36	15	0
53. The Farm, Torlesse	26	5	0
S. A. HOLLAND.—			
54. Monastery, Majorca	15	15	0
A. ELIZABETH KELLY.—			
55. A Sunny Headland, Bank's Peninsula	12	12	0
ARCHIBALD F. NICOLL.—			
56. South Canterbury	26	5	0
57. Side Road	16	16	0
58. Colonel the Honourable Sir R. Heaton Rhodes, Knight Commander the Commandery in New Zealand	Not for Sale		
GRACE BUTLER.—			
59. The Core Lynns, Bealey Valley	52	10	0
60. Mountain Road	21	0	0
A. ELIZABETH KELLY.—			
61. Mt. Sefton	63	0	0
62. The Valley of the Kowai	10	10	0
MABEL HILL.—			
63. A Seventh Century Doorway, Capri	35	0	0
ARCHIBALD F. NICOLL.—			
64. Onawe Peninsula	21	0	0
65. Harewood Farm	12	12	0

	£	s.	d.
M. E. R. TRIPE (the late).—			
66. Manchester Square	52	10	0
W. S. WAUCHOP.—			
67. Fruit and Flowers	12	12	0
BETTY RHIND.—			
68. Frangrantisima	9	9	0
W. BASIL HONOUR.—			
69. On the Coromandel Coast	42	0	0
E. M. COLLIER.—			
70. Pastoral Scene, Taihape	40	0	0
PHYLLIS BETHUNE.—			
71. Mt Cook and Lake Pukaki	12	12	0
IDA G. EISE.—			
72. Waiheke	8	8	0
M. E. R. TRIPE (the late).—			
73. Youth	105	0	0
74. From Ofira to Arthur's Pass	52	10	0
75. Self Portrait	Not for Sale		
OWEN R. LEE.—			
76. Portrait of the Artist	Not For Sale		
S. L. THOMPSON, O.B.E.—			
77. Morning Mist, Concarneau Harbour	26	5	0
RATA LOVELL-SMITH.—			
78. Public Works, Kaikoura	12	12	0
CECIL F. KELLY.—			
79. Springtime, Lyttelton Harbour	26	5	0

	£	s.	d.
COLIN LOVELL-SMITH.—			
80. Rabbit Country	10	10	0
MABEL HILL.—			
81. The Shoemaker	20	0	0
BETTY RHIND.—			
82. The Italian Picture	10	10	0
IVY M. COPELAND.—			
83. Portrait of a Girl in Yellow	20	0	0
BETTY RHIND.—			
84. Dahlias	9	9	0
MISS E. M. HEPBURN.—			
85. Market Gardening, Worcestershire	21	0	0
D. VALLANCE YOUNG.—			
86. Tea Table	6	6	0
E. M. COLLIER.—			
87. Forest Sentinels	30	0	0
IVY M. COPELAND.—			
88. Autumn Glory, Central Otago	7	7	0
A. A. DEANS.—			
89. Mt. Wolseley, Godley Glacier	42	0	0
MARCUS KING.—			
90. Hapuka, Creek, Kaikoura	37	16	0
W. H. ALLEN, A.R.C.A.—			
91. Gloucestershire Landscape	21	0	0
92. Nelson Landscape	21	0	0

	£	s.	d.
B. E. CHAPPLE.—			
93. A Burmese	12	12	0
JENNY CAMPBELL.—			
94. A Southerly Swell	21	0	0
95. Kauri Forest, Waipoua	26	5	0
IDA G. EISE.—			
96. The Swirl, Hawea River	8	8	0
JOHN WEEKS.—			
97. Fruit and Flowers	31	10	0
98. The Village, Grand-Atlas, Morocco	31	10	0
IVY M. COPELAND.—			
99. Old Stables, Anderson's Bay, Dunedin	Not for Sale		
RATA LOVELL-SMITH.—			
100. Roadman's Camp	10	10	0
COLIN LOVELL-SMITH.—			
101. The Steam Crane	6	6	0
MARION TYLEE.—			
102. Stable Doorway	5	5	0
OLIVE BEKEN.—			
103. Back Sheep Country	12	12	0
W. S. WAUCHOP.—			
104. Spring Flowers	12	12	0
S. L. THOMPSON, O.B.E.—			
105. Ancient Fountain at Locronan, Brittany	36	15	0
106. Etude	210	0	0
107. Castle Ruins, Espallion, Southern France	47	5	0
108. A Country Lane near St. Tropez	42	0	0

	£	s.	d.
H. LINLEY RICHARDSON, R.B.A.—			
109. In the Maori Meeting House	52	10	0
CECIL F. KELLY.—			
110. Afternoon Sunlight	10	10	0
MARCUS KING.—			
111. The View from the Glen, Whakapuaka, Nelson	42	0	0
112. Portrait	20	0	0
113. Seascape	20	0	0
L. B. CASBOLT.—			
114. Near Glenside	8	8	0
COLIN LOVELL-SMITH.—			
115. Seascape	12	12	0
E. WALLWORK.—			
116. Ngaio Marsh (Pastel)	26	5	0
ROLAND HIPKINS, A.R.C.A.—			
117. Napier, 1925	21	0	0
E. M. COLLIER.—			
118. Margaret Rose Marie	Not For Sale		
H. LINLEY RICHARDSON, R.B.A.—			
119. Night Scene, Trafalgar Square	26	5	0

GALLERY 2—WATERCOLOURS.
120-173.

BEATRICE SEDDON.—			
120. Rhododendron Loderi	15	15	0
H. TOMBS.—			
121. Waikanae Valley	5	5	0

	£	s.	d.
ESMOND ATKINSON.—			
122. Howard Point	5	5	0
ROSS GORE.—			
123. Porirua Harbour	4	4	0
JEAN McKAY.—			
124. Irises	9	9	0
W. A. SUTTON.—			
125. Winter Afternoon, Loburn	5	5	0
GWYNETH RICHARDSON.—			
126. Silver Morning. Paihia. Bay of Islands	6	6	0
J. PALETHORPE.—			
127. The Ending Day	6	6	0
A. A. DEANS.—			
128. Midwinter Sun	15	15	0
ANGUS GRAY.—			
129. Christchurch Cathedral	16	16	0
ROLAND HIPKINS, A.R.C.A.—			
130. Evening, Makara	7	7	0
ESMOND ATKINSON.—			
131. Cora Lynn, Arthur's Pass	7	7	0
H. LINLEY RICHARDSON, R.B.A.—			
132. Maori Woman and Child	15	15	0
ERIC N. GULLY.—			
133. Waikawa Creek, Te Kaha	6	6	0
CARL LAUGESEN.—			
134. Idle Sails, Wellington	5	5	0

	£	s.	d.
MARGARET FRASER.—			
135. In the Long Grass	4	4	0
JEAN McKAY.—			
136. Hydrangeas	12	12	0
A. A. DEANS.—			
137. Waimak. Gorge	Not For Sale		
H. LINLEY RICHARDSON.—			
138. Head of an Old Man	14	14	0
C. M. DANIELL.—			
139. Eden	Not For Sale		
J. PALETHORPE.—			
140. The Stables	6	6	0
ESMOND ATKINSON.—			
141. From Gollan's Valley Saddle	5	5	0
ESTHER HOPE.—			
142. Springtime	9	9	0
GWYNETH RICHARDSON.—			
143. Manukau Heads from One Tree Hill	10	10	0
T. A. McCORMACK.—			
144. Still Life	18	18	0
145. Landscape, Horowhenua	12	12	0
146. Cheviot Landscape	28	0	0
147. Seascape, Island Bay	30	0	0
148. Chinese Pottery	18	18	0
149. Hurunui River	12	12	0
OLIVIA SPENCER BOWER.—			
150. Kaikoura Farms	12	12	0

	£	s.	d.
GWYNETH RICHARDSON.—			
151. Russell, Bay of Islands	10	10	0
H. LINLEY RICHARDSON, R.B.A.—			
152. Marseilles	14	14	0
153. On the Beach	16	16	0
A. S. PATERSON.—			
154. To Market	10	10	0
JEAN McKAY.—			
155. Roses in Green Jar	6	6	0
156. Some New Zealand Flowers	15	15	0
E. M. COLLIER.—			
157. Attic Kitchen, St. Ives	4	4	0
MABEL HILL.—			
158. Winter, Rochester, Minnesota	6	6	0
L. F. BADE.—			
159. New Zealand Native Cuckoo	5	5	0
A. S. PATERSON.—			
160. In the Sandhills	6	6	0
161. The Haystack	6	6	0
NUGENT WELCH.—			
162. Pipinui	12	12	0
163. A Grey Evening	12	12	0
164. Terawhiti	9	9	0
165. Estuary, Gisborne	8	8	0
R. J. WAGHORN.—			
166. Tasman Glacier	21	0	0

	£	s.	d.
ANGUS GRAY.—			
167. Water Lilies	16	16	0
W. S. WAUCHOP.—			
168. Oheawai	6	6	0
169. Green Pastures, Bay of Islands	6	6	0
OLIVIA SPENCER BOWER.—			
170. Golden Bay, Nelson	7	7	0
ELLA SPICER.—			
171. Fishing Boats	5	5	0
BEATRICE SEDDON.—			
172. Rhododendron Cornubia	14	14	0
NANCY BOLTON.—			
173. Sydney Street	4	4	0

GALLERY 3—WATERCOLOURS.

174-240.

MABEL HILL.—			
174. Portrait Sketch, Dorothy	10	10	0
A. B. DAWSON.—			
175. Miss Hughson, from Shetland	10	10	0
L. HENDERSON.—			
176. Autumn, Governor's Bay	6	6	0
D. H. JONES.—			
177. Awamoa Bridge	6	6	0
N. WALLER.—			
178. Roofs Under Snow	6	6	0

	£	s.	d.
J. PALETHORPE.— 179. Calm Waters	4	4	0
E. K. ROBISON.— 180. Wellington Choy	Not For Sale		
O. M. TONKIN.— 181. Clianthus Puniceus	4	4	0
ANGUS GRAY.— 182. Karaka Bay	8	8	0
R. J. WAGHORN.— 183. Turangakuma	7	7	0
T. A. McCORMACK.— 184. Anemones	15	15	0
185. River in Flood	15	15	0
FRANCIS ELLIS.— 186. Rangitikei	6	6	0
VERNON BROWN.— 187. Flat	10	10	0
JEAN McKAY.— 188. Roses	20	0	0
BEATRICE SEDDON.— 189. A Sunny Corner	7	7	0
ANGUS GRAY.— 190. Trees at Silverstream	8	8	0
191. Sunlight in the Bush	8	8	0
M. E. TYLEE.— 192. From St. Paul's Churchyard.	5	5	0

	£	s.	d.
A. H. McLINTOCK.— 193. Snow in Lanarkshire	8	8	0
AILEEN PALMER.— 194. Winter Morning, Wellington Harbour	6	6	0
A. A. DEANS.— 195. Winter, Canterbury Downs	8	8	0
M. E. TYLEE.— 196. Les Hautes Alps, France	5	5	0
ERIC N. GULLY.— 197. Taitai, Ruatoria	8	8	0
HILDA WISEMAN.— 198. Old Mission House, Tauranga, built 1847	5	5	0
W. M. BARRAUD.— 199. South Westland River	5	5	0
RITA COOK.— 200. Nor-West	6	6	0
M. E. TYLEE.— 201. L'Observatoire, Paris	5	5	0
NELSON ISAAC, A.R.C.A.— 202. Early Morning. (Tempera)	Not For Sale		
D. H. JONES.— 203. Forest, Tekapo	5	5	0
ESTHER HOPE.— 204. Artist in Rocks	7	7	0
205. A Corner of the Yards	9	9	0
206. Evening, Central Otago	9	9	0

	£	s.	d.
JOHN L. MOORE.—			
207. Franz Josef Glacier	8	8	0
ERIC N. GULLY.—			
208. Rimu Trees, Lake Waikaremoana	25	0	0
W. A. SUTTON.—			
209. Dull Day at Loburn	10	10	0
S. L. THOMPSON.—			
210. Raw-Tor, Looking Toward Mesopotamia	16	16	0
211. Autumn	16	16	0
212. Still Water	16	16	0
W. A. SUTTON.—			
213. Port Hills from Hagley Park	10	10	0
GWYNETH RICHARDSON.—			
214. Titirangi Ranges	7	7	0
ENGA WASHBOURN.—			
215. The Sunny Stream	6	6	0
HILDA WISEMAN.—			
216. Upper Harbour, Tauranga	5	5	0
RITA COOK.—			
217. Mount Maud, Pembroke	6	6	0
C. L. WATKINS.—			
218. Wild Chicory Flowers. Pastel.	7	7	0
W. M. BARRAUD.—			
219. Okarito Beach	5	5	0
NANCY BOLTON.—			
220. The Dairy	6	6	0

	£	s.	d.
D. H. JONES.—			
221. Native Fuschias	5	5	0
FRANCIS D. ELLIS.—			
222. Evening, Narrabeen, Sydney	7	7	0
R. J. WAGHORN.—			
223. Remarkables	10	10	0
BETTY RHIND.—			
224. Head of a Child	5	5	0
A. A. DEANS.—			
225. Willows in Winter	12	12	0
226. Winter, 1939	15	15	0
MARJORIE NAYLOR.—			
227. Mount Arthur from Tahuna Sands, Nelson	8	8	0
K. A. VANE.—			
228. Mahurangi Heads	10	10	0
BEATRICE SEDDON.—			
229. Petunias	10	10	0
MABEL HILL.—			
230. Still Life	15	15	0
231. Piccola Marina Capri	35	0	0
KATHLEEN SALMOND.—			
232. Cherry Blossom	15	15	0
W. A. SUTTON.—			
233. Hereford Street, Christchurch	10	10	0
J. FANNING.—			
234. Hutt Valley from Silverstream	8	8	0

	£	s.	d.
THANE FIELD.—			
235. Lasiandra	8	8	0
MARGARET FRASER.—			
236. Love	5	5	0
ESMOND ATKINSON.—			
237. York Bay Sunset	40	0	0
238. Gollan's Valley	5	5	0
A. A. DEANS.—			
239. Winter, 1938	12	12	0
M. WALKER.—			
240. Autumn Leaves	7	7	0

GALLERY 4—OIL PAINTINGS.

241-297.

C. M. PATERSON.—			
241. The Quarry	5	5	0
JOHN WEEKS.—			
242. Spectators	31	10	0
243. Composition	31	10	0
244. Still Life	10	10	0
W. S. WAUCHOP.—			
245. Sunshine and Rain	6	6	0
ARCHIBALD F. NICOLL.—			
246. Over the Downs	10	10	0

	£	s.	d.
W. BASIL HONOUR.—			
247. The Hills of Manaia, Whangarei	12	12	0
248. Cape Brett from Ocean Bay, Whangarei	10	10	0
249. Trees on the Coromandel Coast	9	9	0
250. Morning on the Whangarei Coast	10	10	0
GRACE BUTLER.—			
251. Mountain Daisies	12	12	0
RONA FLEMING.—			
252. At Mill Brook, Fendalton	6	6	0
ARCHIBALD F. NICOLL.—			
253. Westward Ho!	10	10	0
ARTHUR A. BENDER.—			
254. Island Bay, Wellington	6	6	0
NORAH GLEED.—			
255. Wind from the Seas. (Embroidery.)	Not For Sale		
256. Willows in Autumn. (Embroidery.)	Not For Sale		
257. Toi Toi. (Embroidery.)	Not For Sale		
258. Survivors. (Embroidery.)	Not For Sale		
M. E. R. TRIPE (The Late).—			
259. London Tulips	26	5	0
RUSSELL CLARK.—			
260. White Sails	6	6	0
EDITH BOYES.—			
261. A Corner of the Garden	5	5	0
R. WALLWORK, A.R.C.A.—			
262. The Hawker (Colour Print)	2	2	0
263. Golden Grain (Colour Print)	2	2	0

	£	s.	d.
ESMOND ATKINSON.—			
264. Waiwhetu Estuary (Water-colour)	5	5	0
L. B. CASBOLT.—			
265. Gorse (Water-colour)	6	6	0
PEGGY SPICER.—			
266. Evening Light, National Park (Water-colour)	5	5	0
ELLA SPICER.—			
267. The Manakau from Titirangi (Water-colour)	5	5	0
GRACE BUTLER.—			
268. Shadowed Valley.	10	10	0
269. Seascape, New Brighton	8	8	0
W. BASIL HONOUR.—			
270. The Clutha River, Otago	12	12	0
271. The Western Coast, North Coromandel	12	12	0
M. E. R. TRIPE (The Late).—			
272. Cherry Blossom	31	10	0
A. M. WICKENDEN.—			
273. In Hagley Park	6	6	0
PHYLLIS BETHUNE.—			
274. Winter Afternoon, Geraldine.	9	9	0
GRACE BUTLER.—			
275. Near Franz Josef Glacier	10	10	0
V. VIAL.—			
276. The Heart of the Mountains (Water-colour)	8	8	0
ELLA SPICER.—			
277. A Winter Morning (Water-colour)	3	3	0

	£	s.	d.
PEGGY SPICER.—			
278. Before the Storm (Water-colour)	4	4	0
JEAN McKAY.—			
279. Picnic (Water-colour)	8	8	0
RITA COOK.—			
280. Marjorie Marshall	Not For Sale		
BESSIE CHRISTIE.—			
281. Spring Flowers	5	5	0
RUSSELL CLARK.—			
282.—Kawarau Gorge	21	0	0
FANNY RICHARDSON.—			
283. Still Life, Shells	10	10	0
A. LOIS WHITE.—			
284. On the Air	15	15	0
F. I. HUNT.—			
285. P.W.D. Tents, Taupo, Pumice Country	30	0	0
JOHN WEEKS.—			
286. Entrance to Corte, Corsica	31	10	0
F. I. HUNT.—			
287. Pot Plants	10	10	0
A. LOIS WHITE.—			
288. Deluge	25	0	0
JOHN WEEKS.—			
289. Clay Riverbanks	36	15	0
F. I. HUNT.—			
290. Begonia	Not For Sale		
291. A.C. Baths, Taupo	10	10	0

	£	s.	d.
JOHN WEEKS.—			
292. Jewish Women Washing, Morocco	31	10	0

A. LOIS WHITE.—			
293. Gay Ladies	15	15	0

MAY SMITH.—			
294. Canal Locks Camden Town	Not For Sale		
295. Decorative Drawing, Seaside, France	Not For Sale		

RONA FLEMING.—			
296. Tall Trees, Akaroa	5	5	0

BESSIE CHRISTIE.—			
297. Three Witches from "Macbeth"	6	6	0

GALLERY 5—DRAWINGS, PRINTS AND WATERCOLOURS.

298-371.

E. MERV. TAYLOR.—			
298. Seasoned Veteran	2	12	6

K. W. HASSALL.—			
299. Evening (Aquatint)	2	2	0

PEGGY SPICER.—			
300. London	1	1	0

CONNIE LLOYD.—			
301. Across the Bay	1	11	6
302. Kowhai Flowers	1	11	6

B. S. BURNS.—			
303. An Abstract Flower	Not For Sale		
304. Inset Panel	Not For Sale		

	£	s.	d.
E. M. COLLIER.—			
305. Charcoal Study—White Pines	5	5	0

JAMES FITZGERALD.—			
306. River Avon (Etching)	2	2	0

A. H. McLINTOCK.—			
307. Across the Marshes (Etching)	3	3	0

PEGGY SPICER.—			
308. Misty Morning	1	1	0

IVY M. COPELAND.—			
309. Paradise, Lake Wakatipu (Water-colour)	10	10	0

THANE FIELD.—			
310. Primroses	8	8	0

E. S. HOPE.—			
311. The Bend of the River (Gouache)	Not For Sale		
312. Lake Alexandrina (Gouache)	Not For Sale		
313. Building the Shelter (Gouache)	8	8	0

L. B. CASBOLT.—			
314. The Artist's Daughters (Water-colour)	10	10	0

WILLIAM TILLER.—			
315. Jean and Honesty (Pastel)	16	16	0

BETTY RHIND.—			
316. The Art Shop (Water-colour)	12	12	0

ROLAND HIPKINS, A.R.C.A.—			
317. Waimangu (Tempera)	21	0	0

MAUDE HAINES.—			
318. Poppies (Water-colour)	6	6	0

	£	s.	d.
E. S. HOPE.—			
319. A Breton Washing Day (Water-colour)	Not For Sale		
L. B. CASBOLT.—			
320. Surprise (Water-colour)	8	8	0
A. H. McLINTOCK.—			
321. Above the Inlet (Etching)	3	3	0
FRANCIS SHURROCK.—			
322. Sketch design submitted for Centennial Coinage Competition	Not For Sale		
CARLT T. LAUGESSEN.—			
323. Old Colonists (Pastel)	3	10	0
R. J. WAGHORN.—			
324. The Road to Kawatiri (Water-colour)	5	5	0
THANE FIELD.—			
325. Simplicity (Water-colour)	21	0	0
326. Daisies (Water-colour)	21	0	0
RUSSELL CLARK.—			
327. Plantation After Rain (Water Colour)	15	15	0
R. WALLWORK, A.R.C.A.—			
328. Rest in the Desert (Water-colour)	31	10	0
WILLIAM TILLER.—			
329. A Fantasy (Pastel)	31	10	0
RUSSELL CLARK.—			
330. Siesta (Water-colour)	15	15	0
E. WALLWORK.—			
331. Rosina Rose (Pastel)	15	15	0

	£	s.	d.
BETTY RHIND.—			
332. Magnolias (Water-colour)	6	6	0
A. R. FRASER, A.R.C.A.—			
333. Madonna and Child (Coloured Cast)	10	10	0
JAMES FITZGERALD.—			
334. Age (Etching)	1	1	0
A. LOIS WHITE.—			
335. Lino Cut	1	1	0
GEORGE WOODS.—			
336. Tetua (Conte Drawing)	Not For Sale		
R. WALLWORK, A.R.C.A.—			
337. Castle of the Crags	2	12	6
338. Bab-el-Zwela Gateway, Cairo (Etching)	3	13	6
H. TOMBS.—			
339. Wainui River (Etching)	1	11	6
K. W. HASSALL.—			
340. Passing Clouds (Aquatint)	2	2	0
K. W. HASSALL.—			
341. Hillside Pines (Aquatint)	1	10	0
JOHN MAGURK.—			
342. Mountaineers	2	2	0
AILEEN PALMER.—			
343. Pencil Study	2	2	0
344. Scorching Bay from the Heights	3	3	0
W. MILNE.—			
345. The Road	1	1	0

	£	s.	d.
A. H. McLINTOCK.—			
346. Winter Willows (Etching)	4	4	0
347. The Old Smiddy, Dundee (Etching)	4	4	0
CONNIE LLOYD.—			
348. Evening Light	2	2	0
JEAN McKAY.—			
349. Study of Birch Trees	5	5	0
GEORGE WOODS.—			
350. Iris Asleep (Conte Drawing)	3	12	6
A. H. McLINTOCK.—			
351. Early Spring (Etching)	4	4	0
352. Alley in Soho (Etching)	3	3	0
H. TOMBS.—			
353. Hilltop	1	11	6
F. H. COVENTRY.—			
354. The Last Day, Epsom	8	8	0
355. The late J. W. Hills, M.P., P.C.	10	10	0
W. MILNE.—			
356. Margo	1	1	0
AILEEN PALMER.—			
357. Head in Pencil	2	2	0
E. MERV. TAYLOR.—			
358. By-Road	2	2	0
359. The Church at Makara	2	2	0
NELSON ISAAC, A.R.C.A.—			
360. The Mill	3	3	0

	£	s.	d.
A. H. McLINTOCK.—			
361. The Old Boat Shed.	4	4	0
H. TOMBS.—			
362. Orongorongo (Aquatint)	2	2	0
A. LOIS WHITE.—			
363. Lino Cut	1	7	6
H. C. CAMERON.—			
364. Riwaka Valley	7	7	0
GEORGE WOODS.—			
365. Nude (Etching)	1	1	0
CONNIE LLOYD.—			
366. Ruapehu	2	2	0
F. E. GREENISH.—			
367. Church at Seatoun. Perspective of Interior	Not For Sale		
368. Exterior St. George's at Seatoun	Not For Sale		
H. C. CAMERON.—			
369. Tahitian Scene	5	5	0
E. MERV. TAYLOR.—			
370. St. Mary's, Karori	2	2	0
MARGARET FRASER.—			
371. Patsy	1	1	0
SCULPTURE.			
FRANCIS A. SHURROCK.—			
372. Fiona (Bronze)	Not For Sale		
ROBERT N. FIELD.—			
373. Meteor	200	0	0

	£	s.	d.
JOSEPH M. ELLIS.—			
374. Head of a Woman (Plaster)	52	10	0

FRANCIS A. SHURROCK.—			
375. Night (Coloured Plaster)	5	0	0
376. Christopher Perkins (Bronze)	75	0	0

JOSEPH M. ELLIS.—			
377. Head of a Man (Bronze)	Not For Sale		

FRANCIS A. SHURROCK.—			
378. Kennah (Marble)	30	0	0
379. Edward Armstrong, Architect (Bronze)	50	0	0

A. R. FRASER, A.R.C.A.—			
380. Johannes Anderson (Portrait Bust)	Not For Sale		

ETHEL F. GYLES.—			
381. The Problem (Portrait Bust)	Not For Sale		

A. R. FRASER, A.R.C.A.—			
382. Elizabeth (Portrait Bust)	Not For Sale		
383. Lieut. H. R. Harris (Portrait)	Not For Sale		
384. 1914-1918, On Guard	Not For Sale		
385. The Sisters (Modern Tanagara)	Not For Sale		
386. Maori (Carved Pearwood)	100	0	0

CRAFT WORK.

ELIZABETH MATHESON.—			
387. Orange Jar and Bowl (Hand Thrown Pottery)	1	5	0
388. Cream, Sugar and Honey Pot (Hand Thrown Pottery)	1	1	0
389. Vase	1	1	0

	£	s.	d.
OLIVE JONES.—			
390. A Vase (Stoneware Salt Glaze)	3	3	0
391. Fruit Bowl	1	1	0
392. Vase (Earthenware, Dull Glaze)	1	1	0

JEWELLERY AND METAL WORK.

NELSON ISAAC, A.R.C.A.—			
393. Silver Coffee Spoons (six)	3	3	0
394. Trinket Box (Silver and Cloisonne Enamel)	Not For Sale		

MARY HANHAM.—			
395. Silver Jewel Casket set with cloisonne enamel.	Not For Sale		
396. Oxidised Silver and Crystal Set	8	8	0
397. Oxidised Silver and Pearl Set	6	6	0
398. Set of Six Silver Teaspoons, semi-precious stones	5	5	0
399. Silver and Mexican Jade Set	15	15	0
400. Gilding Metal Bowl	Not For Sale		
401. Silver Spoon	4	10	0

EDITH MORRIS.—			
402. Moss Agate and Silver Brooch	Not For Sale		
403. Silver Tray	Not For Sale		
404. Christening Cup (Silver)	4	4	0
405. Pegasus (in Fine Silver)	Not For Sale		
406. Lapis Lazuli Necklace	Not For Sale		
407. Teapot Stand (Silver)	Not For Sale		

MARY HANHAM.—			
408. Silver Spoon	4	10	0

INDEX TO ARTISTS.

NEW ZEALAND ACADEMY OF FINE ARTS.

ATKINSON, ESMOND	122, 131, 141, 237, 238, 264
ALLEN, W. H.	91, 92
BADE, L. F.	159
BARRAUD, W. M.	199, 219
BEKEN, OLIVE	103
BENDER, ARTHUR A.	254
BETHUNE, PHYLLIS	31, 71, 274
BIRCH, IDA	16
BOLTON, NANCY	173, 220
BOWER, OLIVIA SPENCER	150, 170
BOYES, EDITH	261
BROWN, VERNON	187
BURNS, D. S.	303, 304
BUTLER, GRACE	59, 60, 251, 268, 269, 275
CAMERON, H. C.	364, 369
CAMPBELL, JENNY	94, 95
CAREY, IDA H.	9
CASBOLT, L. B.	114, 265, 314, 320
CHAPPLE, B. E.	93
CHRISTIE, BESSIE	26, 281, 297
CLARK, RUSSELL	260, 282, 327, 330
COLLIER, EDITH M.	27, 47, 70, 87, 118, 157, 305
COOK, RITA	200, 217, 280
COOMBS, SALOME	3
COPELAND, IVY M.	83, 88, 99, 309
COVENTRY, F. H.	354, 355
CRAVEN, A. T.	28

DANIELL, C. M.	139
DARROCH, DUNCAN	7, 12, 34
DAWSON, A. B.	175
DEANS, A. A.	89, 128, 137, 195, 225, 226, 239
DUNCAN, JOHN CAM.	42
EDGAR, HILDA	36
EISE, IDA G.	72, 96
ELLIS, FRANCIS	186, 222
ELLIS, JOSEPH M.	374, 377
FANNING, J.	234
FIELD, ROBERT N.	373
FIELD, THANE	235, 310, 325, 326
FITZGERALD, JAMES	35, 306, 334
FLEMING, RONA	252, 296
FRASER, A. R.	333, 380, 382, 383, 384, 385, 386
FRASER, MARGARET	135, 236, 371
GLEED, NORAH	255, 256, 257, 258
GORE, ROSS	123
GRAY, ANGUS	129, 167, 182, 190, 191
GREENISH, F. E.	367, 368
GULLY, ERIC N.	133, 197, 208
GYLES, ETHEL	381
HANHAM, MARY	395, 396, 397, 398, 399, 400, 401, 408
HARKNESS, MRS. M.	37
HAINES, MAUDE	318
HASSALL, K. W.	299, 340, 341
HENDERSON, L.	176
HEPBURN, M. E.	85
HILL, MABEL	63, 81, 158, 174, 230, 231
HIPKINS, ROLAND	117, 130, 317
HOLLAND, S. A.	54

HONOUR, W. BASIL	69, 247, 248, 249, 250, 270, 271
HOPE, ESTHER	142, 204, 205, 206, 311, 312, 313, 319
HUNT, F. I.	285, 287, 290, 291
ISAAC, NELSON	202, 360, 393, 394
JONES, DOROTHY H.	11, 32, 117, 203, 221
JONES, OLIVE	390, 391, 392
KELLY, A. ELIZABETH	
	14, 20, 44, 45, 46, 55, 61, 62
KELLY, CECIL	49, 50, 51, 52, 53, 79, 110
KING, MARCUS	10, 24, 90, 111, 112, 113
LEE, OWEN R.	18, 19, 23, 76
LYNCH, JULIA	30
LAUGESEN, C.	29, 134, 323
LLOYD, CONNIE	301, 302, 348, 366
MATHESON, ELIZABETH	387, 388, 389
MILNE, W.	345, 356
MOORE, JOHN L.	207
MORRIS, EDITH	402, 403, 404, 405, 406, 407
MAGURK, JOHN	342
McCORMACK, T. A.	
	144, 145, 146, 147, 148, 149, 184, 185
McKAY, JEAN	124, 136, 155, 156, 188, 279, 349
McLINTOCK, A. H.	193, 307, 321, 346, 347, 351, 352, 361
NAYLOR, MARJORIE	5, 227
NICOLL, ARCHIBALD F.	56, 57, 58, 64, 65, 246, 253
PALETHORPE, J.	127, 140, 179
PALMER, AILEEN	194, 343, 344, 357
PARTRIDGE, BEATRICE	17
PATERSON, A. S.	154, 160, 161
PATERSON, C. M.	33, 241

RANKIN, MRS. R.	15
RHIND, BETTY	68, 82, 84, 224, 316, 332
RICHARDSON, FANNY	283
RICHARDSON, GWYNETH	126, 143, 151, 214
RICHARDSON, H. LINLEY	4, 8, 109, 119, 132, 138, 152, 153
ROBISON, E. K.	180
SALMOND, KATHLEEN	1, 232
SEDDON, BEATRICE	120, 172, 189, 229
SMITH, COLIN LOVELL	43, 48, 80, 101, 115
SMITH, RATA LOVELL	2, 6, 13, 39, 78, 100
SMITH, MAY	294, 295
SPICER, ELLA	171, 267, 277
SPICER, PEGGY	266, 278, 300, 308
SUTTON, W. A.	125, 209, 213, 233
SHURROCK, FRANCIS	322, 372, 375, 376, 378, 379
TAYLOR, E. MERV.	298, 358, 359, 370
THOMPSON, S. L.	77, 105, 106, 107, 108, 210, 211, 212
TILLER, WILLIAM	315, 329
TOMBS, H.	25, 121, 339, 353, 362
TONKIN, O. M.	181
TRIPE, MRS. M. E. R. (The Late)	40, 66, 73, 74, 75, 259, 272
TYLEE, MARION	38, 102, 192, 196, 201
VANE, K. A.	228
VIAL, V.	276
WAGHORN, R. J.	166, 183, 223, 324
WALKER, M.	240
WALLER, W.	178
WALLWORK, E.	116, 331
WALLWORK, R.	22, 41, 262, 263, 328, 337, 338

WASHBOURN, ENGA	---	---	---	---	---	215
WATKINS, C. L.	---	---	---	---	---	218
WAUCHOP, W. S.	---	---	67, 104, 168, 169,	---	---	245
WEEKS, JOHN	97, 98, 242, 243, 244,	---	286, 289,	---	---	292
WELCH, NUGENT	---	---	162, 163, 164,	---	---	165
WHITE, A. LOIS	---	---	284, 288, 293, 335,	---	---	363
WHITT, M.	---	---	---	---	---	21
WICKENDEN, A. M.	---	---	---	---	---	273
WISEMAN, HILDA	---	---	---	---	198, 216	---
WOODS, GEORGE	---	---	---	---	336, 350,	365
YOUNG, D. VALLANCE	---	---	---	---	---	86

GENERAL INFORMATION

The Exhibition opens on Friday, 10th November, 1939, and will remain open until the end of April, 1940. The New Zealand Academy Section will close on 31st January, 1940.

HOURS OF ADMISSION:

All Week-days	---	---	---	10 a.m. to 5 p.m.
Sundays	---	---	---	2 p.m. to 5 p.m.
Evenings (for the first month, and afterwards as advertised), except Sundays	---	---	---	7 p.m. to 9.30 p.m.

SALES:

The prices of Works for Sale are published in the Catalogue. All enquiries regarding sales must be made to Mrs. M. Murray Fuller or the Secretary, Mr. E. D. Gore.

PRICES OF ADMISSION:

Adults	---	---	---	---	---	1/-
Season Tickets	---	---	---	---	---	10/-
Children (under 16) accompanied by adult	---	---	---	---	---	6d.
School Students accompanied by teacher	---	---	---	---	---	3d.

ART UNION:

Public Art Union tickets are available at one shilling each.

TEA ROOMS:

The Tea Rooms will be open daily for the first month, and afterwards as advertised.

PUBLICATIONS:

A limited number of Tate Gallery illustrated publications on British and Foreign Art are on sale.

GENERAL INFORMATION

The 1954-55 session will close on 31st January 1955. The 1955-56 session will open on 1st September 1955.

PRICES OF ADMISSION

All students are required to pay a fee for the first year and a fee for the second year. The fee for the first year is £100 and for the second year is £120. The fee for the third year is £130 and for the fourth year is £140.

The prices of books for sale are published in the Catalogue. All students intending to buy books should apply to the Librarian at the University, Mr. E. U. Green.

PRICES OF ADMISSION

Adults £100
Junior £50
Children under 10 accompanied by adult £20
School children accompanied by teacher 7 1/2

ART LIGHT

Public Art Light tickets are available at one shilling each.

TEA ROOMS

The Tea Rooms will be open daily for the first session and afterwards as advertised.

PUBLICATIONS

A limited number of Fine Art Gallery illustrated postcards are available in British and Foreign Art and Architecture.

For further information apply to the Librarian, University of Cambridge, 100 Brook Hill Drive, Cambridge, Massachusetts, U.S.A.

