

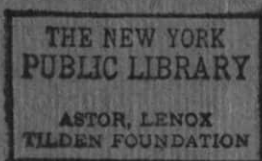
FD  
Feb 25 1927  
11 1/4 1/2  
11 1/2 1/2

20.00  
Bundetto  
Shank p. 2  
87

0  
c

# CATALOGUE

of the Thirty-Eighth  
Annual Exhibition  
of the New Zealand  
Academy of  
Fine Arts



Wellington N.Z.

## 1926

Opened on Friday., Sept.  
17th., 1926. at 8 p.m.

AP

In the Art Gallery,  
Whitmore St.

(Wellington)  
New Zealand

Catalogue—One Shilling

Admission—One Shilling

RC

Ask for

**BLACK** AND **WHITE**

Guaranteed pre-War

Whisky.

*And Very Nice too!*

---

---

Telephone 24-303

**M. E. PITT,** 32 Humber Street,  
Island Bay,

*Is specialising in*

CHINA PAINTING AND

MARQUETERIE.

Special arrangements for wholesale supply.

Old China copied and any design reproduced.

---

Mrs. Pitt has a few vacancies for pupils in the above subjects.

TERMS:

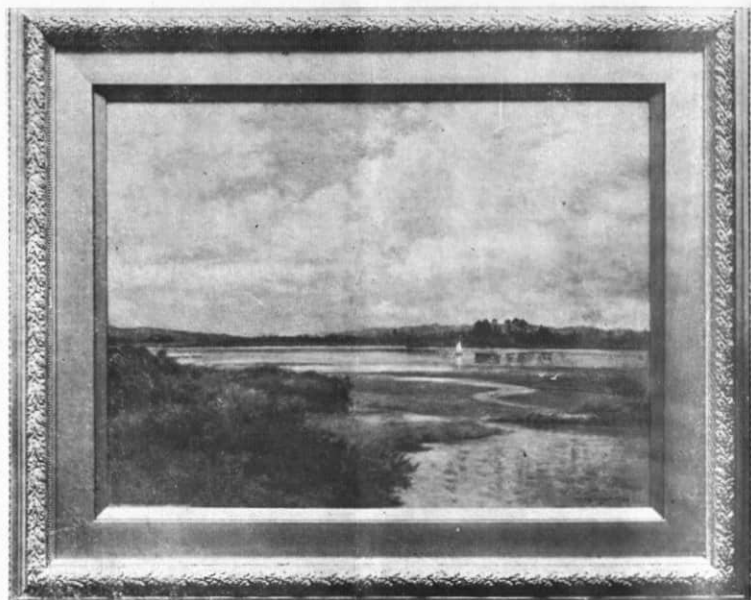
China Painting - - £3 3s.

Marqueterie - - - £2 10s.



**16.—Kids**

*By* MARCUS KING



**31.—Estuary, New Brighton**

*By* W. MENZIES GIBB

1

# The Marvellous "Melotone"

---

*"The Gramophone that does NOT  
Betray Itself!"*

---

**NO** Instrument excels it in faithfulness  
of Tone.

**NO** Instrument equals it in beauty and  
honesty of cabinet work.

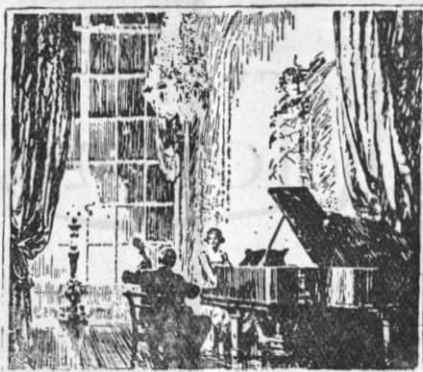
**NO** Instrument approaches it in Low-  
ness of Price because of the  
"Direct from Factory to user"  
selling method.

Note.—The Melotone positively equals the  
World's best at half the cost.

*Demonstrations Daily at—*

## *Billiards Limited*

Baker's Building, Featherston St., Wellington.  
also at Auckland, Christchurch, Dunedin,  
and London.



# 4 GREAT PIANOS

The BROADWOOD

The STEINWAY

The SAMES and

The COLLINSON

*They keep in Marvellously Good Tune.*

*Sole Agents—*

**The BRISTOL PIANO Co. Ltd.**

**Lambton Quay, Wellington.**

**M. J. BROOKES,**  
Manager.

(Established 1883)

Branches throughout the Dominion

The New Zealand Academy  
of Fine Arts, Wellington

(Incorporated 1889)

CATALOGUE  
of the Thirty-Eighth  
Annual Exhibition



Opened by His Excellency the Governor-General,  
on Friday, 17th. September, 1926.  
at 8 p.m.

Open Daily from  
10 a.m. to 5.30 p.m.

And from  
7.30 to 9 p.m.

Admission—  
One Shilling

Art Union Tickets  
One Shilling



# POND'S

## Cold Cream & Vanishing Cream

*One with an oil base and one without any oil*

For daytime and evening it needs a cream to hold the powder and protect it against wind and cold. **USE POND'S CREAM REGULARLY**

Purchase these Creams  
in Jars or in Tubes at  
any toilet goods counter



**POND'S**  
**EXTRACT Co.,**  
**New York.**



To make the powder  
stay on all the evening  
apply a powder base of  
Pond's Vanishing Cream.



*New Zealand Representatives:*

**Kemphorne Prosser & Co., Limited,**  
**Wellington.**



# The New Zealand Academy of Fine Arts.

WELLINGTON.

---

*Patron:*

HIS EXCELLENCY  
THE GOVERNOR-GENERAL.

*President:*

ERNEST W. HUNT.

*Vice-Presidents:*

J. ELLIS.  
CHAS. WILSON.

---

*Council:*

CARBERY, A. R. D.	WAUCHOP, W. S.
FELL, W.	WESTON, T. SHAILER.
HEGINBOTHAM, J. A.	WELCH, N.
RICHMOND, Miss D. K.	YOUNG, W. GRAY.

*Hon. Treasurer:*

H. E. ANDERSON.

*Auditor:*

C. D. MORPETH.

*Secretary:*

H. M. GORE.

*Buy from the House that makes  
Quality its First Consideration*

In our Store we have no room for goods that are not dependable.

Only Diamonds and other Precious Stones of high quality will be found in our stocks.

Silver and Electroplated Ware, Clocks, Watches, and the many other lines we carry are the products of the most reliable British and Continental makers.

The country's shrewdest buyers know that to be true.  
We give the finest value possible.

**Let us Help you in the Selection of your Gifts**

**STEWART DAWSON'S**

*"The Quality Jewellers"*

WELLINGTON



*For Tone*

**ROGERS PIANOS**

**ENGLAND'S BEST.**

Made in a number of Models to suit every taste and pocket

*Terms Arranged.*

**CHAS. BEGG & CO. LTD.**

MANNERS STREET

WELLINGTON

# CATALOGUE

## Main Gallery.

### Oils.

M. E. R. TRIPE—

- |                                     |   |   |   |
|-------------------------------------|---|---|---|
| 1. The Kaikouras .....              | 8 | 8 | 0 |
| 2. Winter Morning, Wellington ..... | 8 | 8 | 0 |

E. M. COLLIER—

- |                     |    |    |   |
|---------------------|----|----|---|
| 3. A Grey Day ..... | 15 | 15 | 0 |
|---------------------|----|----|---|

MARCUS KING—

- |                     |    |   |   |
|---------------------|----|---|---|
| 4. Summer Sea ..... | 21 | 0 | 0 |
|---------------------|----|---|---|

ETHEL RICHARDSON—

- |                               |    |    |   |
|-------------------------------|----|----|---|
| 5. Franz Joseph Glacier ..... | 31 | 10 | 0 |
|-------------------------------|----|----|---|

A. E. BENDER—

- |                            |   |   |   |
|----------------------------|---|---|---|
| 6. Cave Rock, Sumner ..... | 4 | 4 | 0 |
| 7. Near Island Bay .....   | 5 | 5 | 0 |

EVELYN POLSON—

- |                                     |   |   |   |
|-------------------------------------|---|---|---|
| 8. Con. McDavitt's, Cora Lynn ..... | 7 | 7 | 0 |
|-------------------------------------|---|---|---|

B. E. CHAPPLE—

- |                     |   |   |   |
|---------------------|---|---|---|
| 9. Polyanthus ..... | 7 | 7 | 0 |
|---------------------|---|---|---|

ARCHIBALD F. NICOLL—

- |                      |   |   |   |
|----------------------|---|---|---|
| 10. Lady Stout ..... | — | — | — |
|----------------------|---|---|---|

## EVELYN POLSON—

- |     |                     |   |   |   |
|-----|---------------------|---|---|---|
| 11. | Arthur's Pass ..... | 5 | 5 | 0 |
|-----|---------------------|---|---|---|

## SYDNEY L. THOMPSON—

- |     |                             |    |   |   |
|-----|-----------------------------|----|---|---|
| 12. | Medeteranean Sunshine ..... | 21 | 0 | 0 |
|-----|-----------------------------|----|---|---|

## MARCUS KING—

- |     |                             |    |    |   |
|-----|-----------------------------|----|----|---|
| 13. | Posing .....                | 12 | 12 | 0 |
| 14. | The Picnic .....            | 14 | 14 | 0 |
| 15. | Portrait of My Father ..... | —  | —  | — |
| 16. | Kids .....                  | 16 | 16 | 0 |
| 17. | Misty Morning .....         | 8  | 8  | 0 |

## ETHEL RICHARDSON—

- |     |  |    |    |   |
|-----|--|----|----|---|
| 18. | Parari Brach and Blow-hole Point ..... | 5  | 5  | 0 |
| 19. | Mount Drummond .....                   | 10 | 10 | 0 |

## CECIL F. KELLY—

- |     |                         |   |   |   |
|-----|-------------------------|---|---|---|
| 20. | Evening, St. Ives ..... | 5 | 5 | 0 |
|-----|-------------------------|---|---|---|

## V. MACMILLAN-BROWN—

- |     |                            |   |   |   |
|-----|----------------------------|---|---|---|
| 21. | Washerwomen in Italy ..... | 7 | 7 | 0 |
|-----|----------------------------|---|---|---|

## B. E. CHAPPLE—

- |     |                       |   |   |   |
|-----|-----------------------|---|---|---|
| 22. | The Green Dress ..... | 5 | 5 | 0 |
|-----|-----------------------|---|---|---|

## G. E. LEWENS—

- |     |                      |    |    |   |
|-----|----------------------|----|----|---|
| 23. | A Bush Tramway ..... | 10 | 10 | 0 |
|-----|----------------------|----|----|---|

## E. B. FRIBERG—

- |     |                                |    |   |   |
|-----|--------------------------------|----|---|---|
| 24. | A Store Among the Ranges ..... | 20 | 0 | 0 |
|-----|--------------------------------|----|---|---|

## H. M. GORE—

- |     |                   |   |   |   |
|-----|-------------------|---|---|---|
| 25. | Paekakariki ..... | — | — | — |
|-----|-------------------|---|---|---|

## W. TILLER—

- |     |               |    |    |   |
|-----|---------------|----|----|---|
| 26. | Lakshmi ..... | 12 | 12 | 0 |
|-----|---------------|----|----|---|

	£	s.	d.
W. S. WAUCHOP—			
27. The Estuary .....	9	9	0
28. Near Bedeford, Devon .....	9	9	0
EVELYN POLSON—			
29. The Green Slipper .....	42	0	0
GRACE BUTLER—			
30. Mt. Rolleston Buttress, Arthur's Pass .....	21	0	0
W. MENZIES GIBB—			
31. Estuary, New Brighton.....	21	0	0
ARCHIBALD F. NICOLL—			
32. Mr. Harrington .....			—
V. MACMILLAN-BROWN—			
33. Eveline .....	9	9	0
34. The Valley Road .....	8	8	0
CECIL F. KELLY—			
35. Sunny Afternoon .....	18	18	0
EVELYN POLSON—			
36. Sunlight and Shadow .....	25	0	0
SYDNEY L. THOMPSON—			
37. Almond Trees, Mediterranean.....	26	5	0
38. Bridge at Pernes de Vaucluse .....	26	5	0
39. Mosque, Nabeul .....	23	2	0
CECIL F. KELLY—			
40. Road to Rapaki .....	25	0	0
A. ELIZABETH KELLY—			
41. Miss Roma Carey .....			—
42. Otira .....	25	0	0

*If it isn't a Compactum it  
isn't a Clothing Cabinet!*



GENTLEMAN'S FITTED AND HANGING  
CLOTHING CABINET "YN."

This model is a completely fitted clothing Cabinet, designed in proper proportions, to accommodate a large variety of clothing. All appointments are arranged to allow the clothes accommodation to swing entirely outside the Cabinet at a touch, so that they are in the most convenient positions for either ready selection and withdrawal, or replacement, without disturbance or crush to the other contents.

In Mahogany - £47 10s. od.

In Oak - - £43 10s. od.

MADE ONLY BY



**SCOULARS** LAMBTON QUAY



**32.—Mr. Harrington**

*By* ARCHIBALD F. NICOLL



41.—Miss Rona Carey

By A. ELIZABETH KELLY



		£	s.	d.
SYDNEY L. THOMPSON—				
43.	The Mauve Umbrella .....	31	10	0
44.	Market Concarneau .....	26	5	0
45.	Washing Day, Les Martignes.....	25	5	0
EVELYN POLSON—				
46.	Figure out of Doors .....	42	0	0
GRACE BUTLER—				
47.	Summertime, Arthur's Pass .....	21	0	0
MARCUS KING—				
48.	Sun Halo .....	31	10	0
W. B. MONTGOMERY—				
49.	The Sergeant-Major .....			
H. M. GORE—				
50.	Mount Cook .....	10	10	0
51.	On the Beach .....	16	16	0
CECIL F. KELLY—				
52.	Mount Howe, S. Alps .....	25	0	0
SDYNEY L. THOMPSON—				
53.	Evening, Concarneau .....	21	0	0
STEPHANIE VINCENT—				
54.	Wistaria .....	15	15	0
55.	Grease Paint .....	15	15	0
BETTY RHIND—				
56.	Girl with Apples .....	5	5	0
T. F. JOHNSTON—				
57.	In the Valley .....	7	7	0

E. M. COLLIER—

58. Over the Hills ..... 5 5 0

W. BODLE—

59. Scene, Petone ..... 3 3 0

MINNIE F. WHITE—

60. Warrawee, Sydney ..... 6 6 0

CECIL MACGREGOR—

61. The Fiddler by the Fire ..... 3 3 0

W. BODLE—

62. In the Sheep Country ..... 3 3 0

BETTY RHIND—

63. Rest ..... 4 4 0

E. M. COLLIER—

64. Grannie O'Brady's Kitchen ..... 15 15 0

GRACE BUTLER—

65. Evening Seascape ..... 5 5 0

MINNIE F. WHITE—

66. The New Road, Fox Valley ..... 5 5 0

W. MENZIES GIBB—

67. Glimpse of the Sea, New Brighton ..... 7 7 0

ELIZABETH PERRY—

68. Geranium ..... —

H. LINDLEY RICHARDSON, R.B.A.—

69. Two Years Old ..... 31 10 0

## W. R. JOHNSON—

70.	Chinese Gardens, Ermington .....	12	12	0
71.	Dry Summer .....	12	12	0
72.	An Eastwood Landscape .....	12	12	0

## ETHEL F. RICHARDSON—

73.	Mts. Moltke and Rooan, Waiho Gorge .....	15	15	0
-----	--	----	----	---

## GRACE BUTLER—

74.	Otira Gorge .....	12	12	0
-----	-------------------	----	----	---

## H. M. GORE—

75.	Paritutu .....	—	—	—
76.	Orakanui, Waitati .....	—	—	—

## ARCHIBALD F. NICOLL—

77.	From the Summit Road .....	12	12	c
-----	----------------------------	----	----	---

## W. B. MONTGOMERY—

78.	James MacDonald, Esq. ....	—	—	—
-----	----------------------------	---	---	---

## W. A. BOWRING, R.O.I.—

79.	The Late Rt. Hon. W. F. Massey .....	262	10	c
-----	--------------------------------------	-----	----	---

## GRACE BUTLER—

80.	Storm Clouds Gathering .....	52	10	0
81.	Hillside, Paradise Valley .....	7	7	c
82.	Mountain Stream .....	12	12	0

## W. H. ALLEN, A.R.C.A.—

83.	Susan .....	45	0	0
-----	-------------	----	---	---

## ETHEL RICHARDSON—

84.	Mt. Bismark .....	12	12	0
85.	The Razorback—Heavy Weather .....	5	5	0

## ARCHIBALD F. NICOLL—

86.	May Morning .....	12	12	0
87.	The Back Road, Hilltop .....	14	14	0
88.	George Pain, Esq. ....	—	—	—

## A. A. BENDER—

89.	Near Pukekohe .....	7	7	0
-----	---------------------	---	---	---

## R. WALLWORK, A.R.C.A.—

90.	The Sheik's Tomb, near Cairo .....	8	8	0
-----	------------------------------------	---	---	---

## W. BODLE—

91.	Mount Pirinoa .....	4	4	0
-----	---------------------	---	---	---

## F. R. ALEXANDER—

92.	Rocks and Surf.....	8	8	0
-----	---------------------	---	---	---

## EVELYN POLSON—

93.	Waimakariri, Cora Lynn .....	9	9	0
94.	Waimakariri, Upper Reaches .....	6	6	0

## A. A. BENDER—

95.	Clock Tower, St. Albans .....	8	8	0
-----	-------------------------------	---	---	---

## E. B. FRIBERG—

96.	Sunshine of Life .....	10	10	0
-----	------------------------	----	----	---

## ELIZABETH PERRY—

97.	Still Life .....	5	5	0
-----	------------------	---	---	---

## E. L. PRINCE—

98.	The Green Dress .....	6	6	0
-----	-----------------------	---	---	---

## VIVIAN SMITH, A.R.C.A. (Lond.)—

99.	Sonata .....	50	0	0
-----	--------------	----	---	---

## E. KILLICK—

100.	Fruit and Flowers	.....	.....	10	10	0
101.	Cornflowers	.....	.....	10	10	0

## STANLEY DAVIS—

102.	Portrait Study	.....	.....	25	0	0
------	----------------	-------	-------	----	---	---

## GLADYS ANDERSON—

103.	Quietude	.....	.....	8	8	0
------	----------	-------	-------	---	---	---

## H. LINLEY RICHARDSON, R.B.A.—

104.	Winter Morning (Wellington, from Kelburn)	.....	.....	40	0	0
------	--	-------	-------	----	---	---

## MRS. MALCOLM ROSS—

105.	The Volcano from Taupo	.....	.....	5	5	0
------	------------------------	-------	-------	---	---	---

## M. E. R. TRIPE—

106.	The Blue Ribbon	.....	.....	42	0	0
------	-----------------	-------	-------	----	---	---

## RICHARD WALLWORK, A.R.C.A.—

107.	A Cairo Gateway Moonlight	.....	.....	21	0	0
------	---------------------------	-------	-------	----	---	---

## D. K. RICHMOND—

108.	Cineraria	.....	.....	10	10	0
------	-----------	-------	-------	----	----	---

## E. M. COLLIER—

109.	Reflections	.....	.....	25	0	0
------	-------------	-------	-------	----	---	---

## GRACE BUTLER—

110.	Bealey Valley	.....	.....	115	10	0
------	---------------	-------	-------	-----	----	---

## F. V. ELLIS, A.R.C.A.—

111.	A. F. Lowe, Esq., C.M.G.	.....	.....	—	—	—
------	--------------------------	-------	-------	---	---	---

## FLORA SCALES—

112.	Study	.....	.....	3	3	0
------	-------	-------	-------	---	---	---

	£	s.	d.
B. E. CHAPPLE—			
113. Portrait Study .....	5	5	0
W. B. MONTGOMERY—			
114. Haymaking .....			—
A. M. HUBBARD—			
115. The Old Drive .....	6	6	0
BETTY RHIND—			
116. Patsy .....			—
FLORA SCALES—			
117. Study .....	3	3	0
H. LINLEY RICHARDSON, R.B.A.—			
118. Companions .....	75	0	0
B. C. DOBIE—			
119. Cape Maria Van Dieman .....	8	10	0
GLADYS ANDERSON—			
120. Still Life .....	12	12	0
H. HORRIDGE—			
121. Twilight .....	14	14	0
EVELYN POLSON—			
122. Springtime of Life .....	6	6	0
J. A. HEGINBOTHAM—			
123. A Blue Sea .....	4	4	0
MINA ARNDT—			
124. Spring .....			—

W. MENZIES GIBB—

125. Softly the Morning Breaks ..... 14 14 0

F. R. ALEXANDER—

126. Wellington Heads ..... 5 5 0

ARCHIBALD F. NICOLL—

127. The Hon. Mr. Justice Alpers ..... —

ETHEL RICHARDSON—

128. Franz Joseph Glacier ..... 42 0 0

129. Taipo River ..... 5 5 0

MARCUS KING—

130. "Ken" ..... —

W. MENZIES GIBB—

131. Sunshine and Shadow ..... 8 8 0

G. E. LEWENS—

132. The Crossing ..... 4 4 0

---

## Upper Gallery.

---

## Watercolours.

GWYNNETH RICHARDSON—

133. Homeward ..... 5 5 0

ESMOND ATKINSON—

134. The Waterfall ..... 5 5 0

D. K. RICHMOND—

135. York Bay ..... 4 4 0

# Pelone



Bathing  
Costumes

PURE  
New Zealand  
WOOL

IN

JADE  
OLIVE  
CARDINAL  
SCARLET  
WHITE  
NAVY  
ROYAL

& Other Delightful  
Colorings

FOR QUALITY & STYLE

UNEQUALLED.

LOOK FOR LABEL

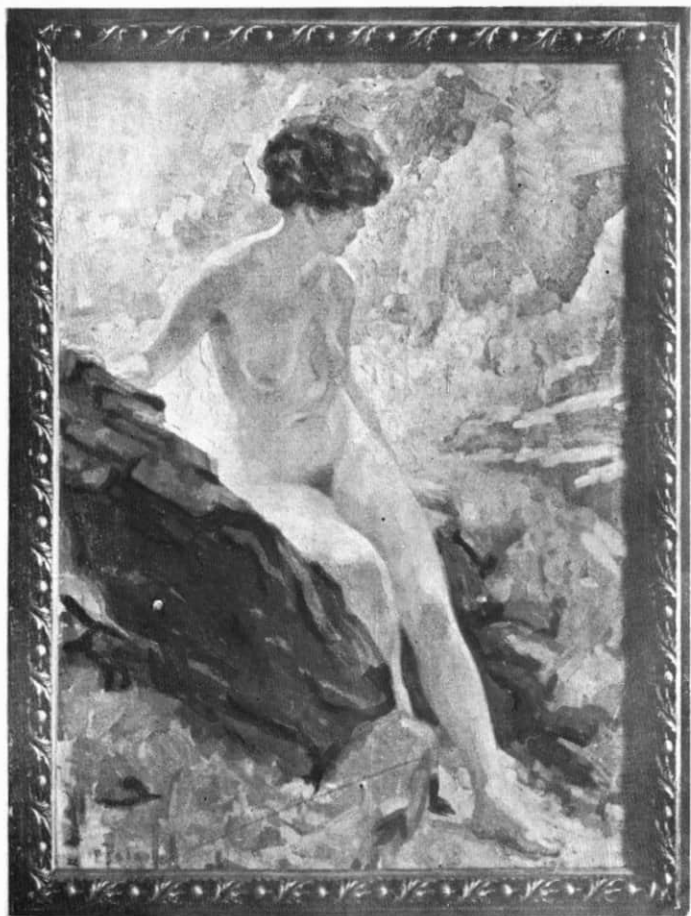
*Pelone*





**43.—The Mauve Umbrella**

*By* SYDNEY L. THOMPSON



46.—Figure Out of Doors

*By* EVELYN POLSON

# The New Adelphi Cabaret

Hannah's Buildings,  
Cuba Street.

*Daily Session :*

Afternoon Tea - - - 3 till 5

Evening - - - 8-30 till 12

---



---

**MANUEL HYMAN'S**

**Famous Exhibition Orchestra**

**at All Sessions**

---



---

Parties of all Descriptions Catered for by  
Arrangement. Ring—

**Telephone 28-294**

to Obtain full Information

**Rodney A. PANKURST**

**D. Eric PANKURST**

*Proprietors.*

## BETTY RHIND—

136. The Crowning of Dreaming John ..... 5 5 0

## THE LADY ALICE FERGUSSON—

137. Burning Hill ..... —

## BASIL HONOUR—

138. On the East Coast ..... 10 10 0

## MARION TYLEE—

139. From the Golf Links, Masterton ..... 4 4 0

## J. L. PALETHORPE—

140. Approaching Rain ..... 7 7 0

## ESMOND ATKINSON—

141. Country East of Masterton ..... 10 10 0

## D. K. RICHMOND—

142. North-west Breeze ..... 5 5 0

143. Old Gum Tree, York Bay ..... 5 5 0

## LEN WATKIN—

144. After Rain, D'Urville Island ..... 8 8 0

## GWYNETH RICHARDSON—

145. Springtime ..... 5 5 0

## ESMOND ATKINSON—

146. Kaikouras from the Beach ..... 5 5 0

## J. L. PALETHORPE—

147. The Distant Waitemata ..... 8 8 0

## J. A. HEGINBOTHAM—

148. Swamp Lands ..... 6 6 0

		£	s.	d.
E. ROSA SAWTELL—				
149.	At the Otira	8	8	0
RONALD MCKENZIE—				
150.	The Last of the Snow	6	6	0
EILEEN PALMER—				
151.	Tiger's Head	5	5	0
BASIL HONOUR—				
152.	Near Lyall Bay	7	7	0
W. MENZIES GIBB—				
153.	The River Styx	7	7	0
154.	Winter Evening	15	15	0
J. L. PALETHORPE—				
155.	Hill Farm	5	5	0
ALICE F. WHYTE—				
156.	The Kiosk	5	5	0
W. FELL—				
157.	Omakaroa Wharf			
E. BOYES—				
158.	Interior	4	10	0
K. AIRINI VANE—				
159.	Door of the Mosque, Algiers	20	0	0
O. SPENCER BOWER—				
160.	Summer Days	3	3	0
R. HERDMAN SMITH—				
161.	Autumn Day on the Moors	5	10	0

W. MENZIES GIBB—

162. Evening Light, Otira ..... 14 14 0

J. L. PALETHORPE—

163. A Country Road ..... 10 10 0

J. EVATT—

164. Valley of the Tukituki ..... 4 4 0

K. ARINI VANE—

165. Street Scene, Algiers ..... 20 0 0

W. A. BOLLARD—

166. The Ravine ..... 5 5 0

K. SALMOND—

167. The Old Home ..... 7 7 0

L. SCOTT—

168. Amber Pool ..... 6 6 0

A. ELIZABETH KELLY—

169. Norway Place, St. Ives ..... 5 5 0

N. MAUDSLEY—

170. Virginia Lake, Wanganui ..... 5 5 0

RONALD MCKENZIE—

171. Indian Summer ..... 5 5 0

172. Wombat Jack's Hut ..... 6 6 0

173. In the Lee of the Hill ..... 5 5 0

MINNIE F. WHITE—

174. The Carnation Patch ..... 6 6 0

M. H. MEYRICK—

175. Italian Garden ..... 6 6 0

		£	s.	d.
<b>ESMOND ATKINSON—</b>				
176.	Mt. Arthur Range	5	5	0
177.	Paritutu	5	5	0
178.	Head of Blind Bay	6	6	0
<b>E. M. COLLIER—</b>				
179.	Fisherman's Alley	3	3	0
<b>ANGUS GRAY—</b>				
180.	River Bend	3	3	0
<b>RUSSELL CLARK—</b>				
181.	In the Studio	—	—	—
182.	Reflections	4	4	0
183.	Sketch for Ali Baba	5	5	0
184.	River Bed and Mountain	4	4	0
185.	The Lady in Black	15	15	0
186.	Evening Sketch	5	5	0
<b>A. MOSER—</b>				
187.	Lansdowne	5	5	0
<b>VIVIAN SMITH, A.R.C.A.—</b>				
188.	Geraniums	5	5	0
<b>K. AIRINI VANE—</b>				
189.	The Artist's Garden	—	—	—
<b>STEPHANIE VINCENT—</b>				
190.	The Old Hut	6	6	0
<b>H. H. TOMBS—</b>				
191.	Wellington Harbour	4	4	0
192.	At Castlepoint	4	4	0
193.	Whiteman's Valley, Upper Hutt	3	3	0

## D. K. RICHMOND—

194.	Zinnias .....	6	6	0
195.	Boat Harbour .....	5	5	0
196.	Still Morning .....	5	5	0

## ESMOND ATKINSON—

197.	From Fringe Hill .....	6	6	0
198.	Wellington Harbour .....	5	5	0

## A. L. AVERY—

199.	Beech Trees .....	4	4	0
------	-------------------	---	---	---

## NUGENT WELCH—

200.	In the Orongorongo .....	—	—	—
201.	The Blueskin Cliffs .....	15	15	0
202.	The Green Peninsula .....	18	18	0
203.	The Headland. Purakanui .....	12	12	0
204.	The Maize Field .....	—	—	—
205.	Kapowai .....	—	—	—

## ARCHIBALD F. NICOLL—

206.	On the Sands .....	10	10	0
------	--------------------	----	----	---

## J. EVATT—

207.	Autumn Gold .....	3	10	0
------	-------------------	---	----	---

## R. LITTLE—

208.	A Quiet Shore .....	4	4	0
------	---------------------	---	---	---

## E. ROSA SAWTELL—

209.	The Tree by the Roadside .....	8	8	0
------	--------------------------------	---	---	---

## MINNIE F. WHITE—

210.	Kembla Valley, Blue Mountains .....	4	4	0
------	-------------------------------------	---	---	---

## E. L. PRINCE—

211.	On the Queen's Drive .....	4	4	0
------	----------------------------	---	---	---



## ANGUS GRAY—

212.	The Breeze .....	3	3	0
------	------------------	---	---	---

## T. A. McCORMACK—

213.	Autumn .....	9	9	0
------	--------------	---	---	---

214.	Lake Brunner .....	—	—	—
------	--------------------	---	---	---

215.	Across the Straits .....	—	—	—
------	--------------------------	---	---	---

216.	Teremakau Valley .....	8	8	0
------	------------------------	---	---	---

217.	Lambton Quay .....	8	8	0
------	--------------------	---	---	---

## M. O. STODDART—

218.	Bondi Beach .....	5	10	0
------	-------------------	---	----	---

## O. SPENCER BOWER—

219.	Summer Clouds .....	3	3	0
------	---------------------	---	---	---

220.	Mouth of the Tongohoe .....	4	4	0
------	-----------------------------	---	---	---

## MAUD COOK—

221.	Interior .....	4	10	0
------	----------------	---	----	---

## ALBERT J. RAE—

222.	Stream near Otira .....	4	4	0
------	-------------------------	---	---	---

## J. EVATT—

223.	Evening .....	4	4	0
------	---------------	---	---	---

## ALBERT J. RAE—

224.	Tree Ferns, West Coast .....	5	5	0
------	------------------------------	---	---	---

## J. A. HEGINBOTHAM—

225.	Evening Glow .....	6	6	0
------	--------------------	---	---	---

## R. WALLWORK, A.R.C.A.—

226.	Evening Light, Crophorne .....	10	10	0
------	--------------------------------	----	----	---

## J. L. PALETHORPE—

227.	Near Ellerslie .....	10	10	0
------	----------------------	----	----	---

# As Artists Say:—

STANDARDISED AND DEAD, or—  
STANDARDISED AND DEPRESSING.

Their remarks apply forcibly to standardised Clothes, which hinder personal expression and prevent wearers of same rising above mediocrity.

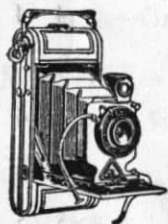
Clothes made by Artists impart Life and help immensely toward Self Expression.

See British Weavers' Works of Art and Sartorial Fashions for men at

## Milligan's

Kelburn Avenue.

THE BEST Apparatus for—



## *Pictorial Photography*

OBTAINABLE AT

Call and  
Inspect

*Waterworths  
Limited*

Call and  
Inspect

LAMBTON QUAY : WELLINGTON

And at Queen St, Auckland

And 705 Colombo St., Christchurch.



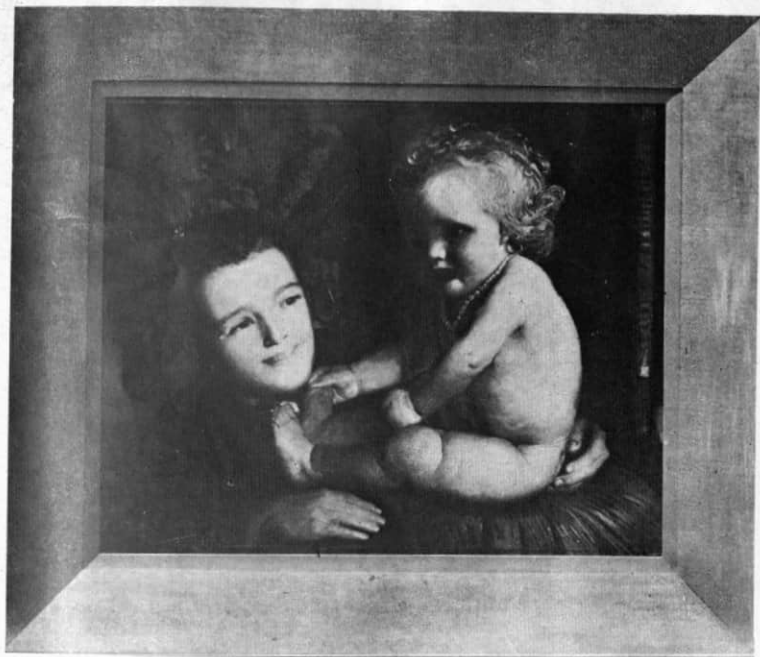
**80.—Storm Clouds Gathering**

*By* GRACE BUTLER



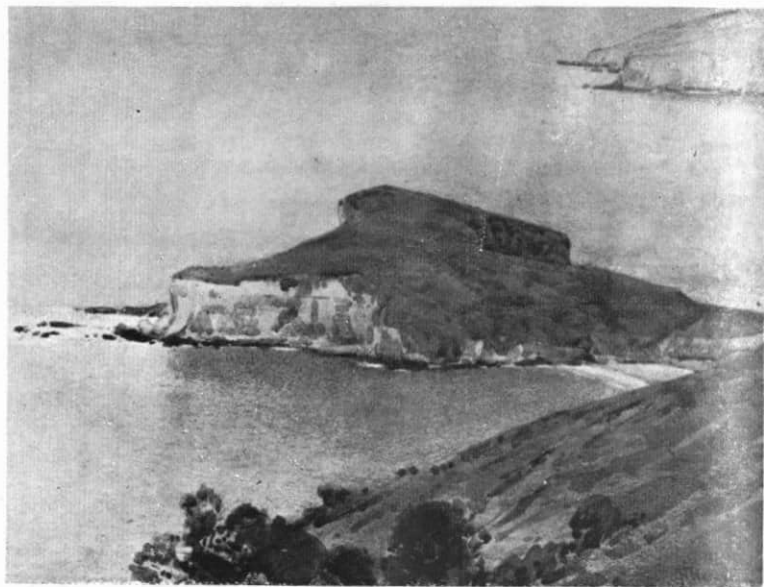
106.—The Blue Ribbon

..... By M. E. R. TRIPE



**118.—Companions**

*By* H. LINLEY RICHARDSON, R.B.A.



**202.—The Green Peninsula**

*By* NUGENT WELCH

# *The Age of the Spirit*

*Makes*

# D. C. L.

## GOLD LABEL

# *The Spirit of the Age*

**MUSIC!** *A kindred Art.*

Worthy of the Best Instruments

**DAWSONS** specialise in:—

“MOORE & MOORE” (London) Pianos,

“DOHERTY” Player-pianos,

And the wonderful new “HIS MASTER’S VOICE”  
Gramophones.

Also—

A complete stock of the best and latest Records.

*YOU are cordially invited to our Music Rooms.*

## ERNEST DAWSON

40 Manners Street.

## M. O. STODDART—

228.	Spring by the Avon .....	10	10	0
229.	The Shadow of the Cliffs .....	10	10	0
230.	Roses .....	10	10	0
231.	North Canterbury Stream .....	10	10	0
232.	Spring, Christchurch .....	10	10	0

## MINNIE F. WHITE—

233.	The Big Gums .....	7	7	0
------	--------------------	---	---	---

## C. HAY CAMPBELL—

234.	The Smithy, Bradfield .....	—	—	—
------	-----------------------------	---	---	---

## F. F. BESWICK—

235.	The Mountain Road .....	4	4	0
------	-------------------------	---	---	---

## A. SINCLAIR, R.B.C.—

236.	Duffer Creek .....	8	8	0
------	--------------------	---	---	---

## JULIA MAUNSELL—

237.	Wintry Day .....	3	3	0
------	------------------	---	---	---

## R. LITTLE—

238.	Cruising .....	4	0	0
------	----------------	---	---	---

## J. A. HEGINBOTHAM—

239.	Foreshore, Akaroa .....	4	4	0
------	-------------------------	---	---	---

## LEN WATKIN—

240.	Declining Day, French Pass .....	8	8	0
------	----------------------------------	---	---	---

## CECIL F. KELLY—

241.	Whitewash Heads, Sumner .....	7	7	0
------	-------------------------------	---	---	---

## RONALD MCKENZIE—

242.	Rangitikei Valley .....	6	6	0
------	-------------------------	---	---	---



	£	s.	d.
M. O. STODDART—			
243. Springtime, Shirley	5	10	0
G. H. ELLIOTT—			
244. A Peep at Lake Mahinapua	15	15	0
SYDNEY HIGGS—			
245. Parawhero, from Sinclair Head	15	15	0
ELLA SPICER—			
246. Street Scene	4	4	0
R. WALLWORK, A.R.C.A.—			
247. The Green, Nether Alderly	8	8	0
E. BOYES—			
248. Dart Valley	6	6	0
E. P. O'DONNELL—			
249. A Grey Day	4	4	0
HAZEL CAMPBELL—			
250. Across the Bay, Moeraki	6	6	0
MAUD COOK—			
251. From the Top of the Hill	5	5	0
W. J. RUSH—			
252. The Graceful Willow	3	3	0
L. SCOTT—			
253. The Green Rock	6	6	0
H. J. EDGAR—			
254. Road in Old Fendalton	6	6	0

## VERA VIAL—

255. The Souks, Tunis ..... 12 12 0

## F. R. ALEXANDER—

256. From Seatoun Heights ..... 8 8 0

## W. S. DUDLEY—

257. Port Vecchio ..... 5 5 0

## A SINCLAIR, R.B.C.—

258. The Sedgy Pool ..... 8 8 0

259. The Avon, Burwood ..... 8 8 0

260. On the Styx ..... 8 8 0

## A. D. CARBERY—

261. Sand Dunes, Rongatai ..... —

262. The Little Wave ..... —

## ELLA SPICER—

263. Across the Harbour ..... 5 5 0

## SYDNEY HIGGS—

264. A Precipitous Coast ..... 10 10 0

265. Western Tiers—Tasmania ..... 21 0 0

266. Tongue Point ..... 6 6 0

267. The Three Gums ..... —

## W. S. WAUCHOP—

268. Mount Barron ..... 7 7 0

## T. A. McCORMACK—

269. Early Morning ..... 10 10 0

## H. J. EDGAR—

270. Spring Morning ..... 4 4 0

	£	s.	d.
DAVID KESWICK—			
271. Camp in the Manuka .....			—
ALICE F. WHYTE—			
272. Washing the Decks .....	6	6	0
A. J. RAE—			
273. Girl with the 'Cello .....	16	16	0
BASIL HONOUR—			
274. The Lagoon, Castle Point .....	10	10	0
W. A. BOLLARD—			
275. Gold and Grey .....	5	5	0
SYDNEY H. HIGGS—			
276. Spring .....	8	8	0
W. S. WAUCHOP—			
277. Teremakau Valley .....	6	6	0
W. RUSSELL FLINT, A.R.A.—			
278. The Peaks of Glencoe .....			—
MAUD BURGE—			
279. Antibes Market .....	10	10	0
280. A Corner in Cagnes .....			—
281. Antibes Harbour .....	10	10	0
282. Cassis, France .....			—
283. Customhouse Quay .....	10	10	0
284. Paris Plage .....	10	10	0
H. LINLEY RICHARDSON, R.B.A.—			
285. Reverie .....	15	15	0
286. After the Bath .....	21	0	0

T. A. McCORMACK—

287. The Sunlit Valley ..... 10 10 0

MAUD COOK—

288. The Haystack ..... 5 5 0

289. After the Shower ..... 5 10 0

D. K. RICHMOND—

290. Red Roses and Lasiandra ..... 10 10 0

BASIL HONOUR—

291. The Top of the Reef, Castle Point ..... —

M. O. STODDART—

292. Argyle Cut ..... 6 6 0

T. A. McCORMACK—

293. Anemones ..... 9 9 0

A. AVERY—

294. Bush Road, Castle Hill ..... 6 6 0

ELLA SPICER—

295. Tree Ferns ..... 4 4 0

VERA VIAL—

296. Market Scene, Sahara ..... 12 12 0

R. WALLWORK, A.R.C.A.—

297. The Shingled Porch ..... 10 10 0

298. Bishop Reginald's Gateway, Evesham ..... 10 10 0

F. V. ELLIS, A.R.C.A.—

299. Bay of Naples ..... 9 9 0

LEN WATKIN—

300. The French Pass ..... 7 7 0

## BEATRICE SEDDON—

300a. After Rain, Rotomanu	.....	.....	4	4	0
----------------------------	-------	-------	---	---	---

## KATHLEEN SALMOND—

301. Christmas Roses	.....	.....	6	6	0
----------------------	-------	-------	---	---	---

## MARION TYLEE—

302. Spring, Masterton	.....	.....	4	4	0
------------------------	-------	-------	---	---	---

## H. LINLEY RICHARDSON, R.B.A.—

303. Summer Day, Plimmerton	.....	.....	9	9	0
-----------------------------	-------	-------	---	---	---

## SYDNEY H. HIGGS—

304. Pakuratahi River	.....	.....	8	8	0
-----------------------	-------	-------	---	---	---

## D. M. Y. SOMMERVILLE—

305. The West Sands, St. Andrews	.....	.....	—	—	—
----------------------------------	-------	-------	---	---	---

## JULIA MAUNSELL—

306. The Golf Links	.....	.....	3	3	0
---------------------	-------	-------	---	---	---

## W. S. DUDLEY—

307. A Corner of the Arab Market	.....	.....	4	4	0
----------------------------------	-------	-------	---	---	---

## ALICE F. WHYTE—

308. Anemones	.....	.....	6	6	0
---------------	-------	-------	---	---	---

## H. J. EDGAR—

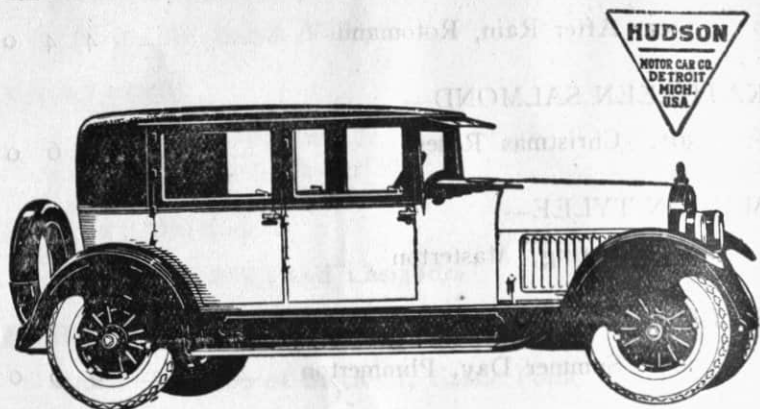
309. Picnic by the Dune	.....	.....	5	5	0
-------------------------	-------	-------	---	---	---

## M. E. R. TRIPE—

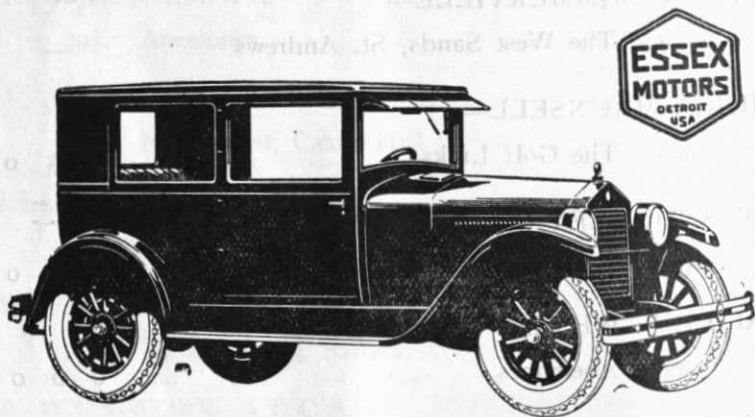
310. Cattle Resting	.....	.....	7	7	0
---------------------	-------	-------	---	---	---

## MYRA THOMPSON—

311. A Sunny Morning	.....	.....	4	4	0
----------------------	-------	-------	---	---	---



*Hudson Brougham*  
**£555**

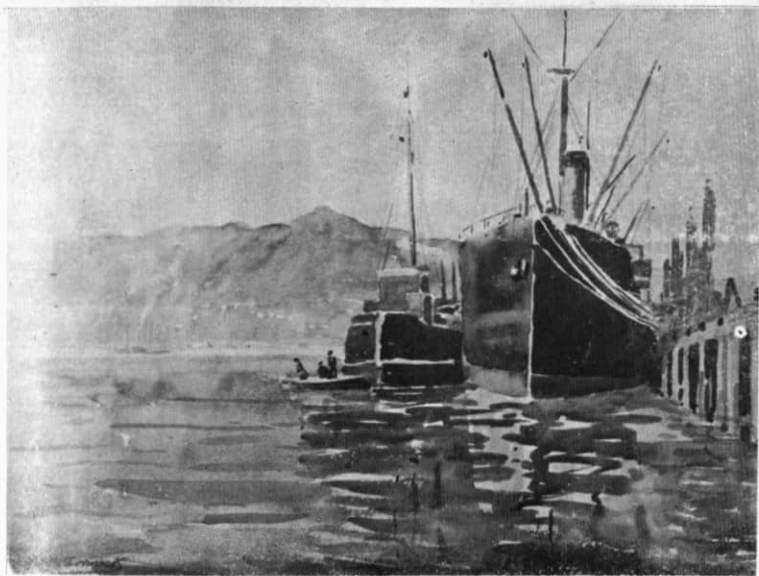


*Essex Coach* **£325**

**The Dominion Motors Ltd.**  
**Courtenay Place, Wellington.**

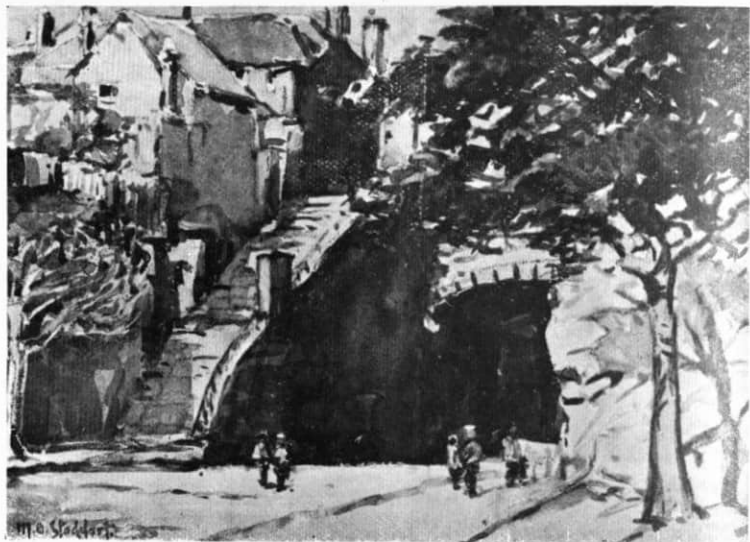
---

---



**269.—Early Morning**

*By* T. A. McCORMACK



**292.—Argyle Cut**

*By* M. O. STODDART



# **TINGEY'S Limited.**

---

Artists' materials of all descriptions in good,  
clean, fresh stocks.

Artists' Canvas, Boards, Tablets, Colours,  
Sable and Hog Hair Brushes. Boxes, fitted  
and empty. Oils and Varnishes.

Watercolours in tubes, pans, or cakes. Out-  
fits fitted, or empty cases. Papers of various  
descriptions, Books, and Blocks. Sable  
Brushes.

Students' Outfits, Paper, Brushes and  
Colours.

Penpainting and Stencilling Outfits, Poker  
Outfits, Marqueterie Boxes and Dyes, Pastel  
and Terrachrome Crayons.

Picture Frames made to order.

Country orders promptly attended to.

---

*Inspection and enquiries invited.*

---

# **TINGEY'S Limited.**

---

**MANNERS STREET,  
WELLINGTON.**

	£	s.	d.
O. SPENCER BOWER—			
312. Harbour from York Bay .....	6	6	0
KATHLEEN SALMOND—			
313. A Portrait .....	8	8	0
A. AVERY—			
314. The Side Door, Llandoff .....			—
BASIL HONOUR—			
315. The Three Trees .....	6	6	c
N. MAUDSLEY—			
316. The Winding River .....	4	4	0
J. W. BROCK—			
317. Summer Hours.....	7	0	0
E. BARTLEY—			
318. Mt. Roon .....	4	4	0
J. W. BROCK—			
319. Watching the Gulls, Karitane.....	14	0	0
SAMUEL CROW—			
320. Vitamines .....	40	0	0
T. BESWICK—			
321. Evening at Cragieburn .....	4	4	0
C. HAY CAMPBELL—			
322. Autumn Tints .....	5	5	0
JAS. FITZGERALD—			
323. Interior Christchurch Cathedral .....	10	0	0

	£	s.	d.
L. SCOTT—			
323a. Selwyn Gorge .....	6	6	0
GWYNNETH RICHARDSON—			
324. Hinemoa and Tutanekai .....	6	6	0
A. F. RAE—			
325. Dorothy Fall, Lake Kaneiri .....	8	8	0
ANNIE McLEAN—			
326. In the Domain, Lyttelton .....	3	3	0
E. BARTLEY—			
327. Half Moon Bay, Kaikoura .....	4	4	0
V. VIAL—			
328. Gateway to Souks .....			—
329. Montreul-Sur-Mer .....	10	10	0
W. S. DUDLEY—			
330. Port Alma and Trocodere .....	3	3	0
H. N. HAWKER—			
331. Avon Estuary .....	4	4	0
C. H. BARTON—			
33. Cabbage Patch, Kent .....	4	4	0
WM. SIMPSON, R.I.—			
333. Loch Fyne .....			—
ELLA SPICER—			
334. Zinneas .....	7	7	0
VIVIAN SMITH, A.R.C.A.—			
335. Nasturtiums .....	5	5	0

	£	s.	d.
ALICE F. WHYTE—			
336. Some Gifts of Summer.....	15	15	0
J. A. TOPLISS—			
337. Interior .....	5	5	0
A. PAUL—			
338. Roses .....	6	6	0
O. SPENCER BOWER—			
339. Taranaki Sands .....	7	7	0
GWYNNETH RICHARDSON—			
340. The Storm Cloud .....	7	7	0
A. S. BOYD—			
341. Mediterranean—Evening .....	15	15	0
ETHEL GRADY—			
342. After Rain, Pelorus Sound .....	3	3	0
C. COSTER—			
343. Anemones .....	3	3	0

---

## Main Gallery.

---

### ON SCREENS.

CONNIE LLOYD—			
344. Fir Trees .....	3	3	0
345. An Old Road .....	3	3	0
MAUD STEELE—			
346. The Grove .....	4	4	0

	£	s.	d.
C. S. PENLINGTON—			
347. The Bowl .....	4	4	0
348. Paphnutui's Vision .....	4	4	0
TREVOR LLOYD—			
349. In the Silent Bush .....	3	3	0
350. An Old Quarry .....	3	3	0
351. Fairy Spring, Rotorua.....	3	3	0
352. Tena koe .....	3	3	0
H. LINLEY RICHARDSON, R.B.A.—			
353. Wellington, from Kelburn .....	8	8	0
JAS. FITZGERALD—			
354. National Bank, Auckland .....	3	3	0
CORRIE CAMERON—			
355. Leisure Hours .....			—
356. The Model .....			—
MAUD STEELE—			
357. "She" .....	3	3	0
358. Pride Goeth Before Destruction .....	4	4	0
GLADYS ANDERSON—			
359. Goblin Market .....	4	4	0
H. LINLEY RICHARDSON, R.B.A.—			
360. Lizards .....	7	7	0
JAS. FITZGERALD—			
361. The Deserted Square .....	3	3	0
F. V. ELLIS, A.R.C.A.—			
362. Vino .....	4	4	0

## DOROTHY VENNING—

363. Silver Birches .....	3	3	0
---------------------------	---	---	---

## TREVOR LLOYD—

364. Its Quiet Down Here .....	3	3	0
--------------------------------	---	---	---

364a. Auckland Grammar School .....	3	3	0
-------------------------------------	---	---	---

## L. D. BESTALL—

365. Tasman Ariête .....	3	3	0
--------------------------	---	---	---

366. The Race .....	3	3	0
---------------------	---	---	---

367. Cliffs near Cape Kidnappers .....	3	3	0
--	---	---	---

## COREEN BROWN—

368. The Fairies Float Bowl .....	3	3	0
-----------------------------------	---	---	---

369. The Toadstool Boys .....	3	3	0
-------------------------------	---	---	---

## GLADYS ANDERSON—

370. Little Miss Muffett .....	3	10	0
--------------------------------	---	----	---

## VARLEY—

371. English Scene .....	—	—	—
--------------------------	---	---	---

372. English Scene .....	—	—	—
--------------------------	---	---	---

## MAUD STEELE—

373. The Joy of Life .....	4	4	0
----------------------------	---	---	---

## TREVOR LLOYD—

374. Tree Ferns .....	3	3	0
-----------------------	---	---	---

## MINA ARNDT—

375. Study of a Head .....	—	—	—
----------------------------	---	---	---

376. The Late Dr. Frank Hay .....	—	—	—
-----------------------------------	---	---	---

## DOROTHY VENNING—

377. Old Clapham .....	—	—	—
------------------------	---	---	---

CONNIE LLOYD—

378. Ti Tree ..... 3 3 0

HILDA WISEMAN—

379. Hookabumas }  
380. The Drinking Trough } ..... 3 3 0

MAUDE STEELE—

381. The Adventurer ..... 3 3 0

GLADYS ANDERSON—

381a. Vanity ..... 3 3 0

DOROTHY VENNING—

382. Old Hampton Court ..... 3 3 0

TREVOR LLOYD—

383. The Haunt of the Kiwi..... 3 3 0

F. V. ELLIS, A.R.C.A.—

384. Virgin and Child ..... 10 10 0

---

## Modelling.

---

F. A. SHURROCK, A.R.C.A.—

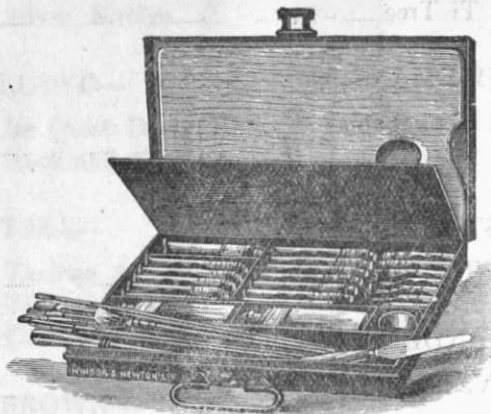
385. Professor T. Shelley ..... —

HILDA EDGAR—

386. The Dancer ..... 31 10 0

J. ELLIS—

387. Professor J. Rankine Brown ..... —



IMPORTERS OF—

Pastels  
 Pen Painting Outfits, Materials  
 Brushform Colours  
 Crayons  
 Drawing Blocks  
 Plasticine and Tools  
 Oil Sketching Paper  
 Sketching Stools  
 Spray Diffusers  
 Indian Inks  
 Modelling Clay, Tools and Boards  
 Stencil Outfits  
 Leather Stumps  
 Tortillions  
 Sketch Books  
 Gold Shells  
 Palettes  
 Brushware  
 Canvasses  
 Drawing Pins  
 Artists' Boxes  
 T Squares

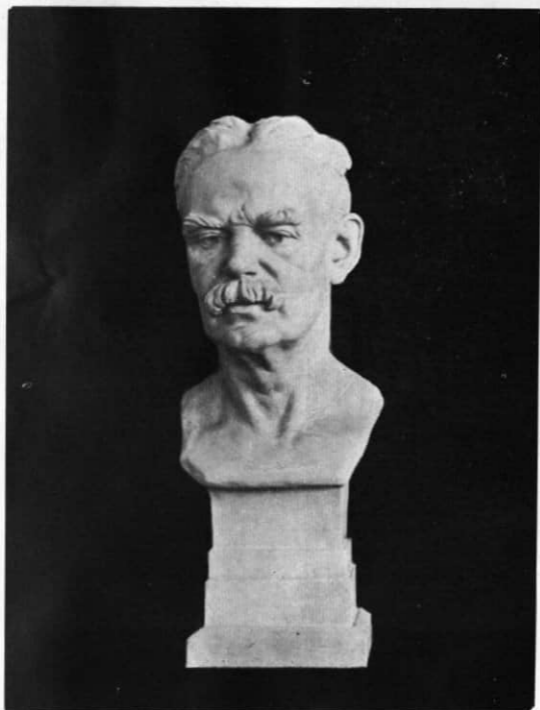
---

**SMITH & SMITH, LTD.**

(Opposite Town Hall)

WELLINGTON.





**387.—Prof. J. Rankine Brown**

*By* J. ELLIS

## STELLA WATSON—

388.	Ariel .....	15	15	0
389.	Setting Sun .....	3	3	0
389a.	Earthenware Pot .....	3	3	0

## F. A. SHURROCK, A.R.C.A.—

390.	Valerie .....	—	—	—
------	---------------	---	---	---

## HILDA EDGAR—

391.	Wm. Trethewey .....	—	—	—
------	---------------------	---	---	---

## STELLA WATSON—

392.	Design for Pottery Group .....	20	0	0
------	--------------------------------	----	---	---

## HILDA EDGAR—

393.	Miss Mischief .....	7	7	0
------	---------------------	---	---	---

—◆—

## Metal Work, China, Etc.

## MARY E. PITT—

394.	(a) Coffee Set .....	—	—	—
	(b) Three Cups and Saucers and plate, Moth design .....	5	10	0
	(c) Two Cups and Saucers, Nasturtium .....	3	3	0
	(d) Cups, Saucers and Basin, Manuka design .....	5	3	6
	(e) Plates, with Cup and Saucer .....	4	17	6
	(f) Five Cups and Saucers, and Jug .....	5	5	0
	(g) Peacock Plate, with Cup and Saucer .....	4	0	0
	(h) Three Plates and Vase .....	4	15	0

## ALFRED ATKINSON—

395.	(1) Silver Trinket Box .....	10	0	0
	(2) Silver Trinket Box .....	4	0	0
	(3) Silver Trinket Box .....	3	5	0
	(4) Six Tea Spoons .....	3	3	0
	(5) Silver Server .....	3	15	0
	(6) Silver Server .....	3	15	0
	(7 and 8) Pearl Shell Ash Tray and Tea Caddy .....	3	17	0

Look for this Sign on the Kerb Pump



VACUUM OIL COMPANY PTY LTD

## In Side Room.

*Sketches presented to the Academy by the late Dr. Frank Hay.*

396. Hugh U. Allen.  
 397. John Constable.  
 398. Sir F. Grant, P.R.A., 1861.

---

## Architectural.

	£	s.	d.
F. DE J. CLERE—			
399. Convent of Mercy, Palmerston North. ....	—		
W. GRAY YOUNG—			
400. Residence, Lower Hutt.....	.....	.....	—
401. Residence, Muritai .....	.....	.....	—
W. CRICHTON—			
402. Admission Building, Wellington Hos- pital .....	.....	.....	—
403. Residence, Hokititka .....	.....	.....	—
F. E. GREENISH—			
403a. Cottages, Hutt Valley.			

---

## Students' Work.

As labelled.

---

# Index to Artists

and Nos. of Exhibits.

- ALEXANDER, F. R.—92, 126, 256.
- ALLEN, HUGH U.—396.
- ALLEN, W. H., A.R.C.A.—83.
- ANDERSON, GLADYS—103, 120, 359, 370, 381a.
- ARNDT, MINA—124, 375, 376.
- ATKINSON, ALFRED—395.
- ATKINSON, ESMOND—134, 141, 146, 176, 177, 178, 197,  
198.
- AVERY, A. L.—199, 294, 314.
- BARTLEY, E.—318, 327.
- BARTON, C. H.—332.
- BENDER, A. E.—6, 7, 89, 95.
- BESTALL, L. D.—365, 366, 367.
- BESWICK, T. F.—235, 321.
- BODLE, W.—59, 62, 91.
- BOLLARD, W. A.—166, 275.
- BOWER, O. S.—160, 219, 220, 312, 339.
- BOWRING, W. A., R.O.I.—79.
- BOYD, A. S.—341.
- BOYES, E.—158, 248.

- BROCK, J. W.—317, 319.
- BROWN, COREEN—368, 369.
- BURGE, MAUD—279, 280, 281, 282, 283, 284.
- BUTLER, GRACE—30, 47, 65, 74, 80, 81, 82, 110.
- CAMERON, CORRIE—355, 356.
- CAMPBELL, C. HAY—234, 322.
- CAMPBELL, HAZEL—250.
- CARBERY, A. D.—261, 262.
- CHAPPLE, B. E.—9, 22, 113.
- CLARK, RUSSELL—181, 182, 183, 184, 185, 186.
- CLERE, F. DE J.—399.
- COLLIER, E. M.—3, 58, 64, 109, 179.
- CONSTABLE, JOHN—397.
- COOK, MRS. MAUD—221, 251, 288, 289.
- COSTER, C.—343.
- CRICHTON, W.—402, 403.
- CROW, SAMUEL—320.
- DAVIS, STANLEY—102.
- DOBIE, B. C.—119.
- DUDLEY, W. S.—257, 307, 330.
- EDGAR, H. J.—254, 270, 309, 386, 391, 393.
- ELLIOTT, G. H.—244.

- ELLIS, F. V., A.R.C.A.—111, 299, 362, 384.
- ELLIS, J.—387.
- EVATT, J.—164, 223.
- FELL, W.—157.
- FERGUSON, THE LADY ALICE—137.
- FITZGERALD, JAMES—323, 354, 361.
- FLINT, W. RUSSELL, A.R.A.—278.
- FRIBERG, E. B.—24, 96.
- GIBB, W. MENZIES—31, 67, 125, 131, 153, 154, 162.
- GORE, H. M.—25, 50, 51, 75, 76.
- GRADY, ETHEL—342.
- GRANT, SIR F. (P.R.A. 1861)—398.
- GRAY, ANGUS—180, 212.
- GREENISH, F. E.—403a.
- HAWKER, H. W.—331.
- HEGINBOTHAM, J. A.—123, 148, 225, 239.
- HIGGS, S. H.—245, 264, 265, 266, 267, 276, 304.
- HONOUR. BASIL—138, 152, 274, 291, 315.
- HORRIDGE, H.—121.
- HUBBARD. A. M.—115.
- JOHNSTON. T. F.—57.
- KELLY, A. ELIZABETH—41, 42, 169.

- KELLY, C. F.—20, 35, 40, 52, 241.
- KESWICK, DAVID—271.
- KILLICK, E.—100, 101.
- KING, MARCUS—4, 13, 14, 15, 16, 17, 48, 130.
- LEWENS, G. E.—23, 132.
- LITTLE, R.—238.
- LLOYD, CONNIE—344, 345, 378.
- LLOYD, TREVOR—349, 350, 351, 352, 364, 364a, 374, 383.
- McCORMACK, T. A.—213, 214, 215, 216, 217, 269, 287, 293.
- MACGREGOR, CECIL—61.
- McKENZIE, RONALD—150, 171, 172, 173, 242.
- McLEAN, ANNIE—326.
- MACMILLAN-BROWN, V.—21, 33, 34.
- MAUDSLEY, N.—170, 316.
- MAUNSELL, JULIA—237, 306.
- MEYRICK, M. H.—175.
- MONTGOMERY, W. B.—49, 78, 114.
- MOSER, A.—187.
- NICOLL, ARCHIBALD F.—10, 32, 77, 86, 87, 88, 127.
- O'DONNELL, E. P.—249.
- PALETHORPE, J. L.—140, 147, 155, 163, 227.
- PALMER, EILEEN—151.



- PAUL, AGNES—338.
- PENLINGTON, C. S.—347, 348.
- PERRY, ELIZABETH—68, 97.
- PITT, MARY E.—394.
- POLSON, EVELYN—8, 11, 29, 36, 46, 93, 94, 122.
- PRINCE, E. L.—98, 211.
- RAE, ALBERT F.—222, 224, 273, 325.
- RHIND, BETTY—56, 63, 116, 136.
- RICHARDSON, ETHEL—5, 18, 19, 73, 84, 85, 128, 129.
- RICHARDSON, GWYNNETH—133, 145, 324, 340.
- RICHARDSON, H. LINLEY, R.B.A.—69, 104, 118, 285,  
286, 303, 353, 360.
- RICHMOND, D. K.—108, 135, 142, 143, 194, 195, 196, 290.
- ROSS, MRS. MALCOLM—105.
- RUSH, W. J.—252.
- SALMOND, KATHLEEN—167, 301, 313.
- SAWTELL, E. ROSA—149, 209.
- SCALES, FLORA—112, 117.
- SCOTT, L.—168, 253, 323a.
- SEDDON, BEATRICE—300a.
- SHURROCK, F. A., A.R.C.A.—385, 390.
- SIMPSON, WM., R.I.—333.

- SINCLAIR, A., R.B.C.—236, 258, 259, 260.
- SMITH, R. HERDMAN—161.
- SMITH, VIVIAN. A.R.C.A. (Lond.)—99, 188, 335.
- SOMMERVILLE, D. M. Y.—305.
- SPICER, ELLA—246, 263, 295, 334.
- STEELE, MAUD—346, 357, 358, 373, 381.
- STODDART, M. O.—218, 228, 229, 230, 231, 232, 243, 292.
- THOMPSON, MYRA—311.
- THOMPSON, SYDNEY L.—12, 37, 38, 39, 43, 44, 45, 53.
- TILLER, W.—26.
- TOMBS, H. H.—191, 192, 193.
- TOPLISS, J. A.—337.
- TRIBE, M. E. R.—1, 2, 106, 310.
- TYLEE, M.—139, 302.
- VANE, K. ARINI—159, 165, 189.
- VARLEY—371, 372.
- VENNING, DOROTHY—363, 377, 382.
- VIAL, VERA—255, 296, 328, 329.
- VINCENT, STEPHANIE—54, 55, 90.
- WALLWORK, R., A.R.C.A.—90, 107, 226, 247, 297, 298.
- WATKIN, LEN—144, 240, 300.
- WATSON, STELLA—388, 389, 389a, 392.

WAUCHOP, W. S.—27, 28, 268, 277.

WELCH, NUGENT—200, 201, 202, 203, 204, 205.

WHITE, MINNIE F.—60, 66, 174, 210, 233.

WHYTE, ALICE F.—156, 272, 308, 336.

WISEMAN, HILDA—379, 380.

YOUNG, W. GRAY—400, 401.



## Light and Shade

Neither Artist nor Connoisseur can appreciate the beauties of light and shade with eyesight that is even slightly faulty. The smallest defect in your vision may cause you serious trouble unless it is attended to.

### Have Your Eyes Examined

We are experts, and our up-to-date scientific equipment ensures the most careful diagnosis and treatment.

Strictly moderate fees.

**MORRISON AND GILBERD,**  
Opticians, 70 Willis St., Wellington

# WELLINGTON TECHNICAL COLLEGE

---

## *School of Art*

---

*Head of School.*

NELSON ISAAC, A.R.C.A.,

*Staff:*

JOSEPH ELLIS.

H. LINLEY RICHARDSON, R.B.A.

VIVIAN SMITH, A.R.C.A.

Miss LENA WILLIAMSON.

*Day and Evening Classes:*

DRAWING

PAINTING

MODELLING

DESIGN

ILLUSTRATION

POSTERWORK

ETCHING

ARTISTIC CRAFTS—

Pottery

Wood, Stone and Marble Carving

Art Metalwork

Embroidery

Leatherwork

Stencilling

Painting and Decorating

---

PROSPECTUS MAY BE HAD ON  
APPLICATION.

JOHN H. HOWELL,

*Director.*

PRINTED BY  
HARRY H. TOMBS, LTD.  
22 WINGFIELD STREET,  
WELLINGTON,

10383

*"Eatons"*

Fine Art Dealers and Picture Framers

55 WILLIS STREET,  
Wellington, N.Z.

Telephone 41-936

**ALLIANCE** Assurance  
Company, Ltd.

Assets Exceed:

**£25,000,000**

All Classes of FIRE, MARINE, ACCIDENT and  
MOTOR CAR INSURANCES effected  
at Current Rates.

—◆—  
Head Office for N.Z.: 23-25 GREY ST., WELLINGTON

R. CAUGHLEY, General Manager for N.Z.

# START WITH A STOP AT THE TRUE BLUE PUMP

WHETHER you're off for a cross-country run or merely driving in town, start at the Big Tree True Blue Pump. You'll find hill work and the varying speeds of city traffic easier. You'll get the extra mileage that is the inevitable result of constant refinery tests to keep Big Tree always ahead of the most exacting requirements of the present-day motor.

Big Tree gives you a well-rounded, more powerful fuel that starts easily, picks up quickly, and accelerates to the maximum without flooding.

A good habit and a wise habit is to start every trip with a stop at the Big Tree Pump.

160

## BIG TREE MOTOR SPIRIT

