

Catalogue
OF THE
Academy
OF
FINE
ARTS

WELLINGTON
FIFTH
ANNUAL
EXHIBITION.
1893.



Brown, Thomson & Co., Printers and Lithographers, Wellington.

THE NEW ZEALAND
Academy of Fine Arts,
WELLINGTON:

FIFTH

Annual * Exhibition

OPENED BY

His Excellency the Governor (Patron),

ON SATURDAY, SEPTEMBER 16TH, 1893.

At 3 p.m.

The Exhibition will continue open to Saturday 23rd, from 12
to 5, and 7.30 to 10, daily,

IN THE

ACADEMY, WHITMORE STREET.

MUSIC IN THE EVENING WHEN PRACTICABLE.

Art Union Tickets, 5s. each, can be obtained from any Member of
the Council, or from the Custodian, and the drawing will take place
on THURSDAY, 21st, at 8 p.m., in the Academy.

Catalogues—ONE SHILLING.

THE NEW ZEALAND
Academy of Fine Arts,

WELLINGTON.

Patron :

HIS EXCELLENCY THE RIGHT HON. THE EARL
OF GLASGOW, G.C.M.G.

President :

CHARLES D. BARRAUD.

Vice-Presidents :

W. S. REID.

H. S. WARDELL.

Council :

G. BEETHAM.
W. FELL, M.A., M.B.
MISS HOLMES.
A. KOCH.

J. M. NAIRN.
MISS RICHARDSON.
A. D. RILEY.
D. T. STUART.

Hon. Treasurer :

J. BAILLIE.

Auditors :

T. R. FLEMING.

F. H. FRASER.

Hon. Secretary :

A. KOCH, ACADEMY.

LIST OF MEMBERS.

SUBSCRIBING MEMBERS.

ALLEN, F., J.P.
ANDERSON, D.

BAKER, J. H.
BARRON, C. C. N.
BATE, A. T.
BEAUCHAMP, H. W., J.P.
BEETHAM, G., J.P.
BEETHAM, MRS. G.
BEETHAM, C. E.
BEETHAM, H. H., J.P.
BELL, H. D.
BLAIR, J. R., J.P.
BOOTH, W., J.P.
BUCHANAN, W. C., M.H.R.
BURN, MRS. J.

CASTENDYK, A.
CHAPMAN, M.
COCK, W.
COLLINS, W. E., M.D.
COOPER, G. S., J.P.

DEVOY, VERY REV. FATHER, V.C.
DUNCAN, J.
DUTHIE, J., M.H.R.

FELL, W., M.D.
FERGUSON, W.
FIELD, W. H.
FITZGERALD, J. E., C.M.G.
FLEMING, T. R.
FOCKE, E.
FRASER, F. H., J.P.
FREEMAN, H. J.

GARVEY, P. S.
GRADY, FRANK
GRACE, HON., M.S., M.L.C.
GRAY, D. S.
GRAY, W.
GOVETT, R. H.
GULLY, H.

HARCOURT, J. B.
HECTOR, SIR JAMES, K.C.M.G.
HENRY, D. J., M.D.
HICKSON, G. A. St. G.
HILL, C.
HOBY, A.

JAMESON, J. S.
JOHNSON, CAPT. R.
JOHNSON, HON. C., M.L.C.

KNAPP, C. A.

LEDGER, R. S.
LEVIN, W. H., J.P.

MACARTHY, T. G., J.P.
MACKAY, W.
MACKENZIE, JAMES
MAINWARING, E. R.
MANTELL, HON. W. B., M.L.C.
MARTIN, R.
MAXWELL, J. P.
MCKERROW, J. C., J.P.
MCTAVISH, A. J.
MEE, G.
MEYER, J. H.
MILES, A. H.
MILLS, E. W., J.P.
MOORHOUSE, W. H. S.

OGLE, R. J.

PARFITT, P.
PEARCE, E., J.P.
PEARCE, A. E.
PENTY, F.
PIARAZYN, HON. R., M.L.C.
POLLEN, HUGH
POLLEN, H., M.D.
PRENDERGAST, SIR JAMES, K.C.M.G.

REDWOOD, HIS GRACE ARCHBISHOP
REID, W. S.
RHODES, MRS. W. B.
RUTHERFURD, A. J.

SEAGAR, E.
SIMPSON, R. M., J.P.
SMITH, JAMES
SMITH, S. PERCY
STEVENSON, A. C.
STUART, D. T.
SWAINSON, MRS.

THOMPSON, JOHN
TOLHURST, G. E., J.P.
TRIGGS, R.
TURNBULL, W.

WARDELL, H. S., R.M.
WERRY, N. W.
WHARTON, C. H.
WHEELER, W. F.
WHITE MRS M. L.
WILLIAMS, MRS. T. C.
WILSON, L. H. B.
WRIGHT, G. B.

ARTIST MEMBERS.

—101—

ANDERSON, R. N.

BAILLIE, JOHN
 BAKER, W. G.
 BARCLAY, MISS C. D.
 BARCLAY, CAPT. W. DE R.
 BARRAUD, CHAS. D.
 BARRAUD, E. N.
 BARRAUD, E. P.
 BARRAUD, W. F.
 BEETHAM, R., R.M.
 BENNETT, MISS
 BEST, MISS
 BLOOMFIELD, C.
 BOTHAMLEY, A. T.
 BURGESS, W. F.
 BRANFILL, COLONEL B. A.
 BRONSDON, MRS.
 BUTLER, G.
 BRUSEWITZ, MRS. H.

CLERE F. DE J.
 COPELAND, MISS
 CRAWFORD, MISS A. L.
 CREASE, MISS K.

DASENT, MISS E.
 DRAKE, E. D.
 DRANSFIELD, MISS S.
 DOUGLAS, MRS. C.

ELLIOTT, H.
 ENGLAND, MRS. C. F. K.

GIBB, J.
 GIBB, W. M.
 GORDON, MISS A. J.
 GORE, H. M.

HARDY, MISS J.
 HEYWOOD, MRS. J. B.
 HILL, MISS M.
 HODGRINS, MISS L. W.
 HOLMES, MISS

IGGLESDEN, C. M.
 IZARD, E. B.

JONES, MRS. L.

JONES, MISS N.
 JONES, F. W.

KEARSLEY, MISS C.
 KIRKWOOD, H.
 KOCH, A.

LAMBERT, T. S.
 LAWSON, A.
 LOWE, MISS A. M.

MACDONALD, D.
 MCKAY, A.
 MORGAN, MISS
 MORISON, W. L.

NAIRN, J. M.

PALMER, MISS C. E.
 PARSONS, J. H.
 PAYTON, E. W.
 PERRETT, J. D.
 PYNSENT, MISS

REYNOLDS, MRS. E. C.
 REYNOLDS, MISS M.
 RICHARDSON, MISS
 RILEY, A. D.
 ROCHFORD, MISS E. M.

SCOTT, JOHN
 SKERRETT, MISS S.
 SMITH, MISS E. C.
 STOWE, MRS. L.
 STODDART, MISS M.
 STEWART, G. T.

TOLHURST, MISS
 TOPLISS, MRS. P.
 TRAVERS, W. T. L., J.P.
 TURNER, E. O.

WHITE, MISS K.
 WILLIAMS, MRS. J. H.
 WILSON, L. W.
 WINTON, J.
 WRIGHT, H.
 WRIGHT, W.



CATALOGUE.

WATER COLOURS.

No.		ARTIST.	PRICE.		
			£	s.	d.
1	Waiwiri Stream, Papaitonga Lake	Miss K. Holmes ...			
2	A Showery Day, Manawatu R.	Noel Barraud ...	4	4	0
3	Waihohonu and Ruapehu ...	W. F. Barraud ...	4	4	0
4	After Sundown, Wellington Harbour	W. Fell ...			
5	On the Rangitikei River ...	C. D. Barraud ...	5	5	0
6	Dent du Midi	Hon. J. C. Richmond ...			
7	The Camp, Awatere	Miss M. Hill ...	8	8	0
8	The New Moon	Noel Barraud ...	5	5	0
9	A Misty Evening, Pipiriki ...	W. F. Barraud ...	4	4	0
10	The Old Saw Mill	Miss F. M. Hodgkins...	8	10	0
11	The Hospital, Awatere	Miss M. Hill ...	3	8	0
12	Portrait	Miss M. E. Richardson	10	10	0
13	Among the Hills	Miss M. O. Stoddart ...	2	10	0
14	4 Views of Leicester Hospital, Warwick	F. P. Barraud ...	14	0	0
15	A Misty Day at Waitati, Otago	W. M. Hodgkins ...	8	8	0
16	My Little Model	Miss M. Hill ...	4	4	0
17	Autumn Afternoon, Foxton Rd.	Noel Barraud ...	2	2	0
18	A Winter Day	Noel Barraud ...	5	5	0
19	The Evening of Life	Miss M. E. Richardson	4	4	0
20	Violets	Miss M. E. Richardson	6	6	0

CATALOGUE.

No.	ARTIST.	PRICE.		
		£	s.	d.
21	The Goose Girl Miss F. M. Hodgkins...	3	3	0
22	Early Morning Calm ... Miss N. Jones ...	1	15	6
23	Ford of Waiau-riwha, Amuri Hon. J. C. Richmond ...			
24	Silver Beach, Te Anau ... Hon. J. C. Richmond ...			
25	Bend in Hutt River J. Baillie ...	5	5	0
26	Source of Waimea River ... G. H. Elliott ...	8	8	0
27	Showery Weather, Spreydon R. A. Gill ...	5	5	0
28	Morning Effect, Upper Har- bour, Dunedin W. M. Hodgkins ...	6	6	0
29	Sweet Violets Miss M. O. Stoddart ...	4	4	0
30	Coast Scene, from Urunui, looking N. C. D. Barraud ...	10	10	0
31	In the Shade of the Willows R. A. Gill ...	10	10	0
32	Shipping at Railway Wharf... R. N. Anderson ...	3	3	0
33	Near Clovelly, N. Devon ... Hon. J. C. Richmond ...			
34	Otomuri, Papaitonga Lake ... Miss K. Holmes ...			
35	Morning Tide, Lower Harbour, Otago W. M. Hodgkins ...	5	5	0
36	Salisbury Cathedral F. P. Barraud ...	4	4	0
37	Mouth of River Clyde ... Hon. J. C. Richmond ...			
38	Ripon Cathedral F. P. Barraud ...	4	4	0
39	Black Bird's Nest in Cuba Bush Mrs. M. Bronsdon ...			
40	Chrysanthemums Miss M. Hill ...	3	3	0
41	The Queen's Wharf R. N. Anderson ...	3	3	0
42	Evening, Waimarino Country W. F. Barraud ...	3	3	0
43	The Waimakiriri, near Kaiapoi J. Baillie ...	10	10	0
44	At Queenstown, Lake Wakatipu G. H. Elliott ...			
45	Girl Feeding Fowls Miss F. M. Hodgkins... 4	4	4	0
46	Landscape with Sheep ... Noel Barraud ...	5	5	0
47	The Mouth of the Lagoon ... J. H. Young ...	6	6	0
48	Portrait Miss M. E. Richardson			
49	In Waiwaru Bush, Lower Taieri, Otago W. M. Hodgkins ...	3	15	0
50	Papaitonga Lake Miss K. Holmes ...			
51	Christmas Roses Miss M. O. Stoddart ...	6	0	0
52	Egatheia Medullaris Miss K. Holmes ...			
53	Old Mill near Dunedin ... Signor G. P. Nerli ...	4	4	0

CATALOGUE.

No.	ARTIST.	PRICE.	
		£	s. d.
54	"Resignedly beneath the Sky The Melancholy Waters lie." —Poe. <i>J. Baillie</i>	8	8 0
55	Alfred F. Hill, Esq. <i>Miss M. Hill</i>
56	Primroses <i>Miss F. M. Hodgkins</i>	3	15 0
57	The Last of Old European <i>R. N. Anderson</i>	3	3 0
58	Mid Sannox Arran <i>Hon. J. C. Richmond</i>
59	A Hermit's Corner <i>Mrs. M. Bronsdon</i>
60	A Low Tide at Catlin's River, Otago <i>W. M. Hodgkins</i>	7	7 0
61	Magdalen Valley, Nelson <i>G. H. Elliott</i>
62	Wellington Harbour, from Petone <i>J. Baillie</i>	4	4 0
63	Near Sumner <i>R. A. Gill</i>	5	5 0
64	Granny <i>Miss M. Hill</i>	6	6 0
65	Taupo Moana <i>W. F. Barraud</i>	4	4 0
66	Island Bay <i>Miss M. Hill</i>	4	4 0
67	Lighters, Port Chalmers <i>L. W. Wilson</i>	5	5 0
68	Morning <i>Miss E. C. Smith</i>	3	3 0
69	Daffodils <i>Mrs. J. H. Williams</i>
70	Marjory <i>Mrs. J. H. Williams</i>

OIL PAINTINGS.

No.	ARTIST.	PRICE.	
		£	s.
71	Day Dreams <i>B. A. Branfill</i>	5	5
72	Clearing after Rain, Milford Sound <i>J. D. Perrett</i>	4	10
73	Makarora Valley, Head of Lake Wanaka <i>J. D. Perrett</i>	3	3
74	Low Tide, Nelson <i>Miss N. Jones</i>	1	1
75	Summer Morning, Sydney Harbour <i>Miss Flora (Daisy) Ross</i>	2	2
76	"Rupert" <i>R. N. Anderson</i>	31	10
76A	Mt. Earnslaw <i>J. D. Perrett</i>	6	6
77	By the Sea-Side <i>J. D. Perrett</i>	3	3
78	Dog's Head <i>W. F. Burgess</i>	3	3

CATALOGUE.

No.	ARTIST.	PRICE. £ s.
79	Martin's Ferry, Evan's Bay ... <i>Miss A. J. Gordon</i> ...	4 10
80	Mount Cook and Tasman, from Cook River, W.C. <i>C. Blomfield</i> ...	21 0
81	Native Flowers, N.S.W. (Panel) <i>Miss Flora (Daisy) Ross</i>	3 3
82	Study of Lion's Head <i>Miss M. E. Richardson</i>	6 6
83	Magnolia (Panel) <i>Mrs. L. Jones</i>	3 3
84	Portrait of Mr. J. C. Butler <i>G. E. Butler</i>	...
85	Winter Afternoon, Hutt River ... <i>Miss Flora (Daisy) Ross</i>	5 5
86	Roseneath Point <i>Miss A. J. Gordon</i> ...	4 10
87	Waterfall near Rainbow River ... <i>C. M. Iggleston</i>	...
88	Dennie's Hole, R. Maitai, Nelson <i>C. M. Iggleston</i>	2 2
89	A Find, near Brighton, Ch.Ch. ... <i>J. M. Madden</i>	8 8
90	A Cattle Run <i>J. M. Madden</i>	6 6
91	Smith Sound <i>Miss K. White</i>	10 10
92	Otira Gorge, West Coast Road ... <i>C. Blomfield</i> ...	12 12
93	A Breezy Day, Kaikoura <i>A. W. Walsh</i>	10 10
94	Belmont (Wellington) <i>Miss K. White</i>	6 6
95	A Showery Day, near Nelson <i>E. D. Drake</i>	2 2
96	Sand Hills and Sea <i>J. M. Madden</i>	3 3
97	Rose Bay, Sydney <i>Miss Flora (Daisy) Ross</i>	2 2
97A	Near Greymouth <i>L. W. Wilson</i>	3 3
98	Old Identities, Foggy Sunrise ... <i>R. N. Anderson</i>	31 10
99	Mount Arthur Range, Nelson ... <i>W. F. Burgess</i>	16 16
100	Arum Lillies <i>Mrs L. Stowe</i>	3 0
101	The Hutt Valley in July <i>Marc Lucas</i> ...	5 5
102	Mudflats, Nelson <i>H. Kirkwood</i>	4 4
103	Boat Landing, Upper Arthur R. <i>L. W. Wilson</i>	2 2
104	Sunset, Akaroa Heads <i>G. Gibb</i> ...	10 0
105	Dusky Sound <i>R. Beetham</i>	5 5
106	After Southerly Buster, Lyell's Bay <i>W. G. Baker</i>	15 0
107	Mount Cook, from Pukaki, early morning <i>J. Gibb</i> ...	25 0
108	In Wilton's Bush <i>W. de R. Barclay</i>	...
108A	A Grey Day, N. Brighton, Christ- church <i>J. M. Madden</i>	7 7
109	Winter Evening, near Waitata ... <i>J. D. Perratt</i>	5 5
110	Mt. Cook & Tasman, from Okarito <i>C. Blomfield</i> ...	4 4

CATALOGUE.

No.	ARTIST.	PRICE.	
		£	s.
111 In the Grey Morning	<i>J. D. Perrett</i>	5	5
112 Low Tide	<i>J. M. Madden</i>	3	3
113 In Hagley Park	<i>W. Menzies Gibb</i>	4	10
114 The Edge of the Bush, Valley of Mangahoho	<i>Rodway Barnes</i>	26	5
115 Road near Howick	<i>Miss Maud Vaile</i>	7	10
116 Wet Winter Day	<i>Signor G. P. Nerli</i>	12	12
117 Afternoon, near Otaki	<i>W. G. Baker</i>	4	4
118 July Morning on the Leith, Dunedin	<i>J. D. Perrett</i>	4	10
119 Through Cook Strait in a Coaster	<i>J. Gibb</i>	15	0
120 Portrait of the Rev. Dr. Purchas	<i>E. W. Payton</i>		
121 Mount Cook, Sunrise	<i>C. Blomfield</i>	4	4
122 Near Plimmerton, Afternoon ...	<i>W. G. Baker</i>	4	4
123 Bush Sawpit, West Coast Road ...	<i>G. Gibb</i>	7	10
124 Waste Land	<i>W. Menzies Gibb</i>	15	15
125 Kaka Hill, Nelson... ..	<i>Miss D. K. Richmond</i>	5	0
126 Roses and Clematis Seed	<i>Miss M. O. Stoddart</i>	4	0
127 An English Trout Stream	<i>F. S. Rodway Barnes</i>	7	7
128 Childs Head	<i>Mrs. K. P. Douglas</i>	5	0
129 An Old Tidal Fence	<i>J. M. Madden</i>	31	10
130 Autumn Showers	<i>W. Menzies Gibb</i>	25	0
131 Annora	<i>J. M. Nairn</i>	4	0
132 The Dock, Port Chalmers	<i>L. W. Wilson</i>	5	5
133 A Study, Touching Up	<i>J. M. Nairn</i>	4	0
134 Maitai River	<i>H. Kirkwood</i>	3	3
135 Tess	<i>J. M. Nairn</i>	6	10
136 Moonrise, Coromandel Harbour ...	<i>E. W. Payton</i>	10	10
137 Lady Augusta Boyle (Entered by Permission)	<i>Miss E. G. Prideaux</i>		
138 Kaiwhaki, Wanganui River	<i>E. W. Payton</i>	10	10
139 Port Robinson, Cheviot Estate ...	<i>H. M. Gore</i>	5	5
140 Lake Mahinapua	<i>L. W. Wilson</i>	5	5
141 Tess and Cloud (Hardy)	<i>J. M. Nairn</i>	100	0
142 Study of an Old Man's Head	<i>Mrs. J. H. Williams</i>	3	3
143 Belt of White Pines, Wainui Valley	<i>Rodway Barnes</i>	10	10
144 Mrs. Bleazard (Portrait)	<i>Miss E. G. Prideaux</i>		
145 A Winter Evening	<i>W. Menzies Gibb</i>	15	15

CATALOGUE.

No.	ARTIST.	Price.	
		£	s.
146 Taranaki	<i>E. W. Payton</i>	15	15
147 A Wind-Swept Beach	<i>J. M. Madden</i>	7	7
148 A Perspective of the Harbour from Minamar	<i>Mrs. England</i>
149 Lyell Bay	<i>E. D. Drake</i>	2	2
150 " Charles Surface	<i>Marc Lucas</i>	2	2
151 Lady's Head	<i>Miss M. E. Morton</i>	4	4
152 McMahons Point, Sydney	<i>Miss Flora (Daisy) Ross</i>	3	3
153 Solitude	<i>E. W. Payton</i>	6	6
154 The Mouth of the Huia	<i>E. W. Payton</i>	5	5
155 Autumn, Waiwetu	<i>W. F. Burgess</i>	5	5
156 Study of a Dog's Head	<i>Mrs. F. M. Copeland</i>	5	10
157 Goose Girl	<i>Miss M. Morgan</i>	5	5
158 Brunette	<i>Miss E. G. Prideaux</i>	10	10
159 J. Baillie, Esq.	<i>J. M. Nairn</i>
160 The Little Baker	<i>Miss M. Morgan</i>	4	4
161 Summer	<i>J. M. Nairn</i>	4	10
162 Evening, Chistchurch	<i>W. Menzies Gibb</i>	10	10
163 Leo	<i>Miss M. E. Richardson</i>	5	5
164 A Wairarapa Trout Stream	<i>E. W. Payton</i>	5	5
165 Scindia	<i>Miss M. E. Richardson</i>	5	5
166 In the Studio	<i>G. E. Butler</i>	10	10
167 Head of Lake Te Anau	<i>L. W. Wilson</i>	4	4
168 Study of Child	<i>Miss M. Morgan</i>	1	1
169 Makara Bay Study	<i>Miss E. Dasernt</i>	1	10
170 Study of Shells	<i>W. de R. Barclay</i>
171 Study of a Girl (Pastel)	<i>Miss M. Morgan</i>	5	5
172 Brugmansia (Panel)	<i>Miss M. Best</i>	2	5
173 Lilies (Panel)	<i>Mrs. A. Brusewitz</i>	2	10
174 Clematis (Panel)	<i>Mrs. L. Jones</i>	4	4
175 Blue and Red Gum (Panel)	<i>Miss M. Best</i>	3	3
176 Magnolia Conspicua (Panel)	<i>Mrs. A. Brusewitz</i>	2	10
177 Native Clematis (Panel)	<i>Mrs. A. Brusewitz</i>	3	3
178 Irises (Panel)	<i>Miss C. E. Palmer</i>	1	10
179 Japanese Lillies (Panel)	<i>Miss S. Dransfield</i>	3	10
180 Cactus	<i>Mrs. L. Jones</i>	1	10

CATALOGUE.

No.	ARTIST.	PRICE.	
		£	s.
181 Head of Young Girl (Pastel) ...	Miss M. Morgan ...	2	10
182 Pansies	Miss C. E. Palmer ...	2	2
183 Wallflower	Mrs. E. C. Reynolds	3	3
184 Purple Iris (Panel)	Miss S. Dransfield ...	3	10
185 Roses	Miss C. E. Palmer ...	3	3
186 Chrysanthemums	Miss E. Dasant ...	2	2
187 Chrysanthemums	Miss M. A. Stoddart	4	4
188 N.Z. Clematis (Panel)	Miss M. Best	£3	16 6
189 Orchids (Panel)	Miss Best	2	0
190 Lillies	Mrs. M. Bronson		
191 Convolvulus (Panel)	Miss S. Dransfield		
192 Poppies	Miss A. Lowe	1	1
193 to 202 Ten Frames of Photographs	M. Ross		
203 to 208 Six Frames of Photographs	A. T. Bothamley		
209 Portrait of Mrs. John H. Baker (Charcoal)	Mrs. C. Douglas		
210 Manawatu Gorge	W. G. Baker	4	15
211 Up the Creek, near Wadestown ...	W. G. Baker	4	15
212 Harmony	J. H. W. Parsons	12	12
213 Me one too	B. A. Branfill	12	12
214 Noon Day Rest	Mrs. F. M. Copeland	3	3
215 Gold Dredging on the Buller River	W. de R. Barclay		
216 Portrait of a Lady (Charcoal) ...	Mrs. C. Douglas		
217 Nude Study	Miss M. Morgan	3	3
218 Nude Hindoo Girl	Miss M. Morgan		
219 Resting (Pastel)	Miss M. Morgan	1	5
220 Thoughts	Miss C. E. Palmer	1	0
221 Anemonas (Plaque)	Miss C. E. Palmer	1	10
222 Carving	Mrs. G. Beetham		

COMPETITION WORKS.

222a Modelling in Clay, "Head of Moses" ...	Miss M. J. Lingard, W. School of Arts
223 Young Girl, Painting ...	H. Spencley, Cant. School of Arts
224 Girl's Head, " ...	H. Spencley, " "
225 Study of Boy " ...	C. Bickerton, " "
226 Girl's Head " ...	C. Bickerton, " "

CATALOGUE.

No.	ARTIST.
227 Study of Head Miss M. Hill, <i>W. School of Arts</i>
228 Girl's Head Miss E. M. Catley, <i>Nelson</i>
229 Study of Head Mrs. J. H. Williams, <i>Wellington</i>
230 Girl's Head Miss F. M. Hodgkins, <i>Dunedin</i>
231 Study of Head Mrs. L. Jones, <i>Wanganui</i>
232 Old Man C. Kidson, <i>Canterbury School of Arts</i>
233 Lady's Head G. E. Butler, <i>Morrison's Art Studio, W.</i>
234 Greek Slave C. Bickerton, <i>Cant. School of Arts</i>
235 Hercules Miss S. Jollie, <i>W. School of Arts</i>
236 Venus Miss M. J. Lingard, <i>W. School of Arts</i>
237 Violins, &c. H. Spenceley, <i>Cant. School of Arts</i>
238 Samoan Group Miss M. J. Lingard, <i>W. School of Arts</i>
239 Fruit, &c. Miss A. E. Turner, <i>Cant. School of Arts</i>
240 Hydronge Miss H. Smith, <i>Cant. School of Arts</i>
241 Samoan Group Miss S. Jollie, <i>W. School of Arts</i>
242 Still Life Miss S. Jollie, " "
243 Pineapples E. M. Watkins, <i>Cant. School of Arts</i>
244 Primroses A. E. Turner, " "
245 In the Garden G. E. Butler, <i>Morrison's Art Studio, W.</i>
245A Marine Study Miss Morton, <i>Auckland</i>
246 Clematis Mrs. E. C. Reynolds (<i>Dunedin</i>), <i>W. School of Arts</i>
247 Panel Flowers Mrs. Malcolm Ross, <i>Dunedin</i>
248 Panel Flowers Mrs. Malcolm Ross, <i>Dunedin</i>
249 Poppies Miss A. McLean, <i>Ch. School of Arts</i>
250 Roses Mrs. A. McLean, " "
251 Lilies Miss H. Smith, " "
252	
253*	<i>C. E. Bounsdon</i> , Old Oak Screen, Middle Temple Hall.
254	" Chancel Screen, Ingham Church, Norfolk.
255	" Priors Church of St Mary's, Guisborough, Yorks.
256*	<i>J. G. Turner</i> , Design for City Residence
257*	<i>G. O. Chaplin</i> , Design for Town Residence
258*	<i>E. England</i> , Design for New Vestry Hall, Kensington.

* *Canterbury School of Arts.*

Result of Annual Competitions

OF

THE NEW ZEALAND ACADEMY OF FINE ARTS EXHIBITION, 1893.

Judges :

C. D. BARRAUD, <i>President.</i>	H. S. WARDELL, <i>Vice-President.</i>
MISS HOLMES.	MISS RICHARDSON.
G. BEETHAM.	J. M. NAIRN. A. D. RILEY.

OPEN TO ALL.

Class I.

For the Best Original Painting in Oil or Water Colour
(life size), of a human head painted from life ... 3 Guineas

Miss M. Hill, Wellington School of Art	Prize
C. Bickerton, Christchurch School of Art	Commended

Open only to Art Students and Amateurs throughout the Colony.

Class II.

1. Figure from Antique, Black and White, or
Monochrome 1 Guinea

Miss Sara S. Jollie, Wellington School of Art	Prize
---	-----	-------

2. Study from Still Life, in Oil or Water Colour ... 1 Guinea

Miss Hetty L. Smith, Christchurch School of Art	Prize
Miss Annie E. Turner, Christchurch School of Art	Commended

Class III.

Original Studies direct from Nature.

Landscape or Marine Study, in Oil	1 Guinea
G. E. Butler, Mr. W. Morison's School of Art, Wgtn.		Commended
(Not sufficient entries).		

Class IV.

Mechanical and Architectural Drawings	1 Guinea
E. England, Christchurch School of Art	Prize

Class V.

Modelling in Clay or Wax, from the Antique	1 Guinea
(Not sufficient entries.)		

Class VI.

Original Design in any Medium.

Decorative Panel	1 Guinea
Mrs. E. C. Reynolds, late of Wellington School of Art		Prize
Miss A. McLean, Christchurch School of Art	Commended

Class VII.

Photography (by Amateurs only).

1. Six Landscapes, untouched 1 Guinea
(Not sufficient entries.)
2. Six Portraits, untouched 1 Guinea
(Not sufficient entries.)

THREE PORTFOLIOS

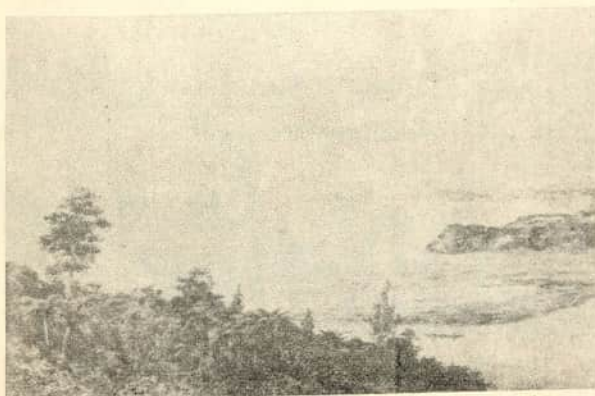
WITH

Water Colour Studies of N.Z. Flowers,

MISS E. RENTON.

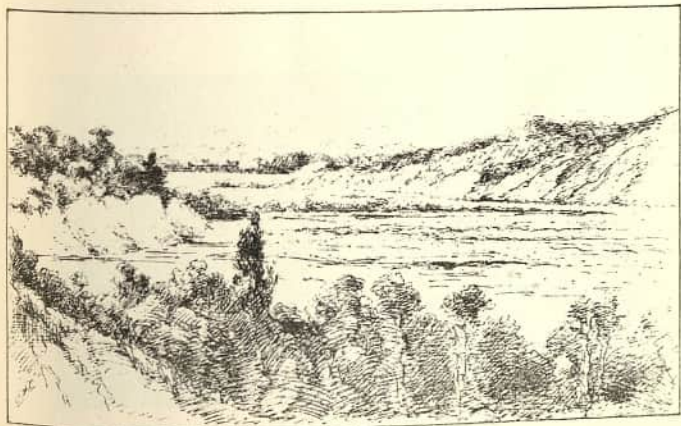
Each £2.

Can be seen on application to the Secretary.



30 Coast Urunui looking North, C. D. Barraud.

114 The Edge of the Bush, Valley of
Manirakaho
Kootenay Harries



5 On the Rangitikei River

C. D. Barrand



1 Waiwiri Stream, Papaitonga
Lake

Miss K. Holmes



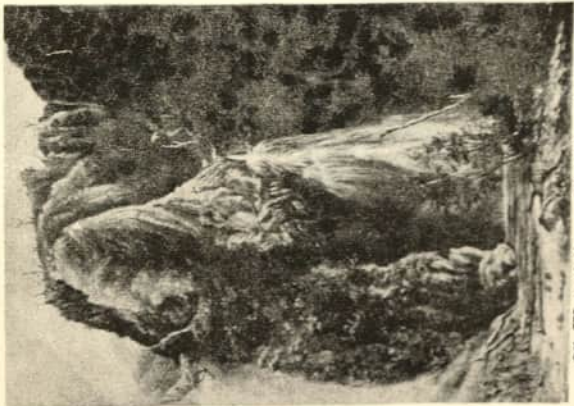
106 After Southerly Buster, Lyell's Bay *W. G. Baker*



115 Road near Howick
Miss Maud Vaile



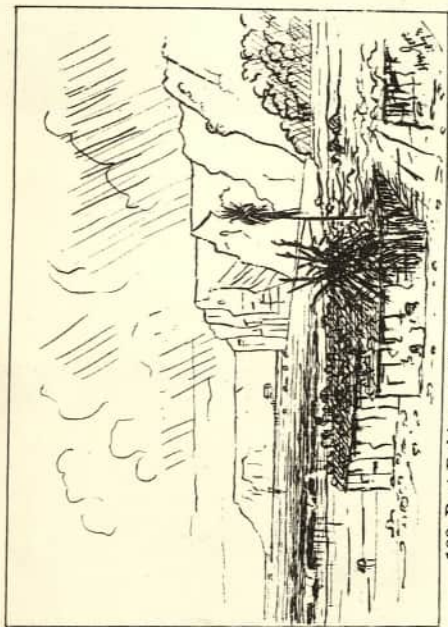
142 Study of an Old Man's Head
Mrs. J. H. Williams



87 Waterfall near Rainbow River
C. M. Iggleson

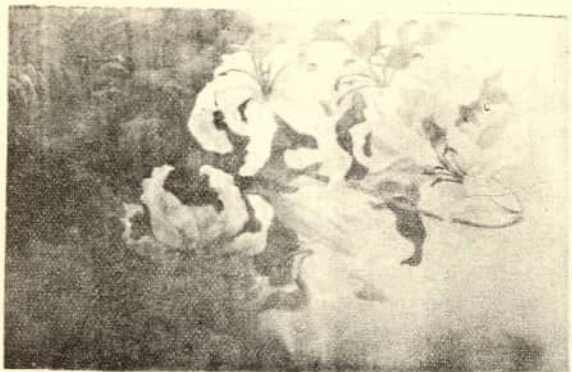


144 Mrs. Bleazard (Portrait)
Miss E. G. Pridcaux



189 Port Robinson, Cheviot Estate ... *H. M. Gore*

179 Japanese Lillies (Panel)
Miss S. Dransfield



177 Native Clematis (Panel)

Mrs. A. Brusewitz



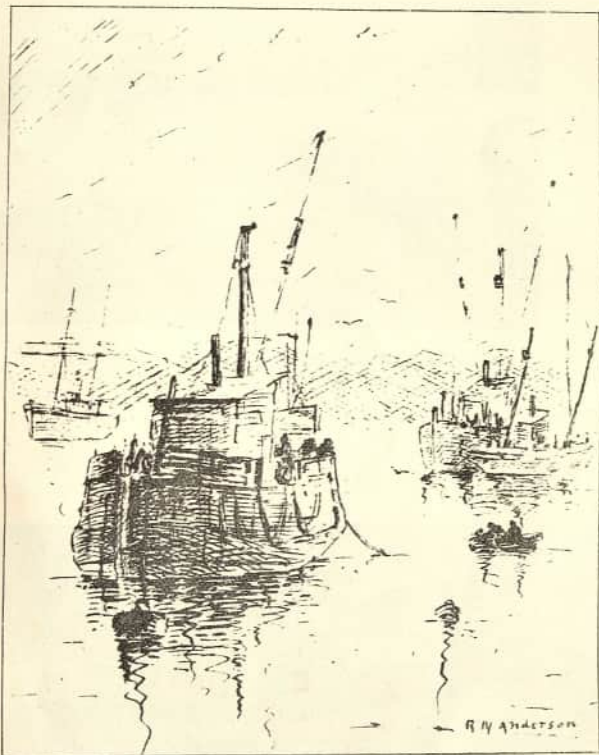
99 Mount Arthur Range, Nelson

W. F. Burgess

G. E. Butler

166 In the Studio



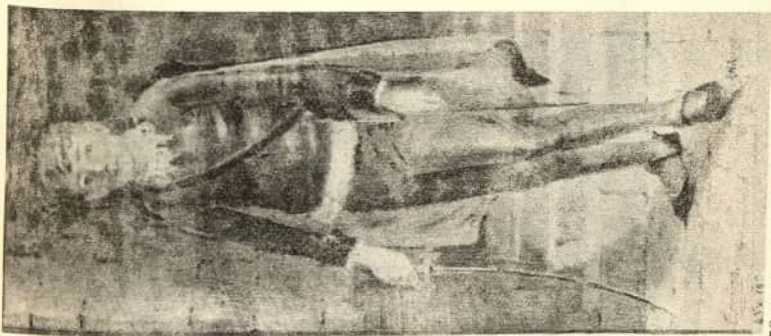


98 Old Identities, Foggy Sunrise

E. N. Anderson



43 The Waimakariri near Kaiapoi, *J. Baillie.*



76 "Rupert," *R. N. Anderson.*



64 Granny Miss M. Hill



16 My Little Model Miss M. Hill

➤ INDEX. ◀

- R. N. Anderson, 57, 41, 32, 76, 98
 C. Bickerton, 225, 226
 Col. B. A. Branfill, 213, 71
 Mrs. A. Brusewitz, 173, 177, 176
 Miss M. Best, 188, 175, 172, 189
 Capt. W. de R. Barclay, 170, 215, 108
 Noel Barraud, 8, 2, 18, 46
 W. F. Barraud, 9, 3, 65, 42
 C. D. Barraud, 30, 5
 F. P. Barraud, 14, 36, 38
 Mrs. Bronsdon, 59, 39, 190
 J. Baillie, 43, 62, 25, 54
 W. G. Baker, 211, 117, 122, 210, 106
 R. Beetham, 105
 A. T. Bothomley, 203 to 208
 C. Blomfield, 80, 92, 121, 110
 Rodway Barnes, 114, 143, 127
 Miss C. de R. Barclay, 108, 170, 215
 C. E. Bounsdon, 253, 254, 255
 W. F. Burgess, 155, 99, 78
 G. E. Butler, 166, 84, 233, 245
 Mrs. F. M. Copeland, 156, 214
 Miss E. M. Catley, 228
 Miss E. Dasent, 169, 186
 Miss S. Dransfield, 179, 184, 191
 E. D. Drake, 95, 149
 Mrs. C. Douglas, 128
 Mrs. England, 148
 E. England, 258
 G. H. Elliott, 26, 61, 44
 Dr. W. Fell, 4
 H. M. Gore, 139
 J. Gibb, 107, 119, 104, 123
 Miss A. Gordon, 86, 79
 W. M. Gibb, 130, 124, 145, 162, 113
 R. A. Gill, 31, 63, 27
 Miss F. M. Hodgkins, 21, 45, 10, 56, 230
 Miss K. Holmes, 34, 50, 1, 52
 W. M. Hodgkins, 35, 28, 49, 60, 15
 Miss M. Hill, 64, 16, 40, 7, 11, 55, 66,
 227
 C. M. Igglesden, 87, 88
 Miss S. Jollie, 235, 241, 242
 Mrs. L. Jones, 83, 174, 180, 231
 Miss N. Jones, 22, 74
 C. Kidson, 232
- H. Kirkwood, 102, 134
 Miss A. M. Lowe, 192
 Miss M. J. Lingard, 222a, 236, 238
 M. Lucas, 150, 101
 Miss Morton, 151
 J. M. Madden, 129, 89, 147, 90, 112,
 96
 Miss Morton, 245a
 M. Morgan, 157, 160, 217, 168
 Miss McLean, 249, 250
 Signor, G. P. Nerli, 53, 116
 J. M. Nairn, 141, 159, 135, 161, 131,
 133
 Miss E. G. Prideaux, 144, 137, 158
 Miss C. E. Palmer, 221, 185, 178, 220,
 182
 E. W. Payton, 120, 146, 136, 138, 153,
 154, 164
 J. H. W. Parsons, 212
 J. M. Perritt, 109, 111, 72, 73, 118, 77,
 76a
 Miss F. Daisy Ross, 152, 81, 85, 75, 97
 Mrs. Malcolm Ross, 247, 248
 M. Ross, 193, 202
 Miss D. K. Richmond, 125
 Hon. J. C. Richmond, 23, 6, 58, 33, 37,
 24
 Mrs. E. C. Reynolds, 183, 246
 Miss M. E. Richardson, 48, 20, 19, 82,
 163, 165
 Miss E. C. Smith, 58
 Miss H. Smith, 240, 251
 Mrs. L. Stowe, 100
 H. Spenceley, 223, 224, 237
 Mrs M. O Stoddart, 13, 29, 51, 187
 Miss A. E. Turner, 239
 J. G. Turner, 256
 Miss M. Vaile, 115
 Mrs. J. H. Williams, 69, 70, 142, 103,
 229
 Miss K. White, 91, 94
 E. M. Watkins, 243
 L. W. Wilson, 67, 97a, 132, 140, 167,
 103
 A. W. Walsh, 93
 J. H. Young, 47

ERARD • PIANO,

300 GUINEAS.

THE PUBLIC is invited to inspect a Magnificent Concert Grand, (300 Guineas), at the Sole Agency for New Zealand, The DRESDEN PIANO CO.

The Dresden Co. have instruments practically by every leading maker in the world.

The Dresden Co. receive letters daily from all parts of the colony confirming the excellence of their TIME PAYMENT SYSTEM.

The Dresden Co.'s Name is, by experience, familiar in thousands of happy homes in the North and South Islands.

**Erard Pianos, Schwechten Pianos,
Broadwood Pianos, Lipp and Sohn Pianos,
Kuhse Pianos, Bohm Pianos, and
Other Distinguished Makers on Time Payments.**

Time Payment a Specialty, from 20s. Monthly.

DRESDEN PIANO CO.,
Lambton Quay & Brandon St.,
WELLINGTON.
M. J. BROOKES, Manager.