

ACADEMY
OF FINE
ARTS.

WELLINGTON

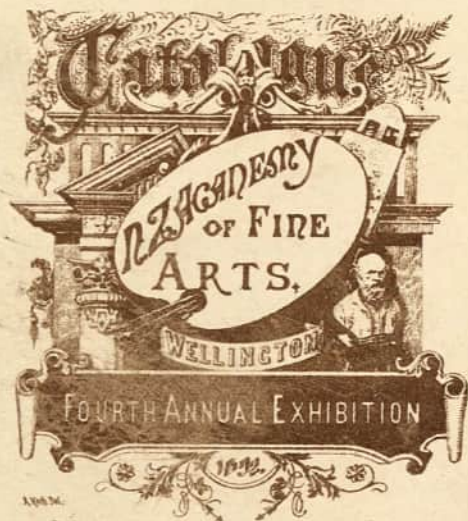
FOURTH ANNUAL EXHIBITION

1892.

A. Kees, Del.

WELLINGTON:
LYON & BLAIR, PRINTERS, LAMBTON QUAY.

1892.



WELLINGTON :
LYON & BLAIR, PRINTERS, LAMINGTON QUAY.

1872.

THE NEW ZEALAND
ACADEMY OF FINE ARTS,
WELLINGTON.

Patron :

HIS EXCELLENCY THE RIGHT HON. THE EARL OF
GLASGOW, G.C.M.G.

President :

CHARLES D. BARRAUD.

Vice-Presidents :

HON. JAMES C. RICHMOND AND

H. S. WARDELL.

Council :

G. BEETHAM

W. FELL, M.A., M.B.

MISS HOLMES

A. KOCH

W. L. MORISON

J. M. NAIRN

A. D. RILEY

D. T. STUART

Hon. Treasurer :

J. BAILLIE.

Auditors :

W. F. BARRAUD AND F. H. FRASER.

Hon-Secretary :

A. KOCH, PHOENIX CHAMBERS, LAMBTON QUAY.

List of Members.

SUBSCRIBING MEMBERS.

- ALLEN, F., J.P.
ANDERSON, D.
ANSON, DR. G.
BARRON, C. C.
BATE, A. T.
BEAUCHAMP, H. W., J.P.
BEETHAM, G., J.P.
BELL, H. D.
BLAIR, J. R., J.P.
BOOTH, W., J.P.
CASTENDYK, A.
CHAPMAN, M.
COCK, J. H., J.P.
COCK, W.
COLLINS, DR.
COOPER, G. S., J.P.
DUNCAN, J., J.P.
DUTHIE, J., M.H.R.
EBERLE, E.
FELL, DR. W.
FERGUSON, W.
FITZGERALD, J. E., C.M.G.
FLEMING, T. R.
FOCKE, E.
FRASER, F. H., J.P.
FREEMAN, H. J.
GARVEY, P. S.
GRADY, FRANK
GRAHAM, C. C., J.P.
GRAY, D. S.
GRAY, W.
GOVETT, R. H.
GULLY, H.
HAMILTON, R. M.
HANNAY, W. M.
HARCOURT, J. B.
HECTOR, SIR JAMES, K.C.M.G.
HENRY, DR. J.
HICKSON, C.
HILL, C.
HOBY, A.
JAMESON, J. S.
JOHNSTON, HON. C., M.L.C.
KNAFF, C. A.
LEDGER, R. S.
LEVIN, W. H., J.P.
LONG, C. J.
- MACARTHY, T. G., J.P.
MACKAY, W.
MACKENZIE, JAMES
MAINWARING, E.
MANTELL, HON. W.
MARTIN, R.
MAXWELL, J. P.
MCKERROW, J. C., J.P.
McTAVISH, A. J.
MEE, G.
MEYER, J. H.
MILES, A. H.
MILLS, E. W., J.P.
MOORHOUSE, W. H. S.
OGLE, R. J.
PARFITT, P.
PEARCE, E., J.P.
PENTY, F.
PHARAZYN, HON. R., M.L.C.
POLLEN, HUGH
POLLEN, DR. H.
PRENDERGAST, SIR JAMES, K.C.M.G.
REDWOOD, ARCHBISHOP
REID, W. S.
RHODES, MRS., B.
RICHMOND, HON. J. C.
ROBINSON, W., R.M.
RUTHERFURD, A. J.
SIMPSON, R. M., J.P.
SMITH, JAMES
SMITH, S. PERCY.
STEVENSON, A. C.
STUART, D. T.
SWAINSON, MRS.
THOMPSON, JOHN
TOLHURST, G. E., J.P.
TRIGGS, B.
TRINGHAM, C.
TURNBULL, W.
WARDELL, H. S., R.M.
WATERS, REV. F. J., L.M., D.D.
WERRY, N. W.
WHARTON, C. H.
WHEELER, W. F.
WILLIAMS, MRS. T. C.
WILSON, L. H. B.
WRIGHT, G. B.

ARTIST MEMBERS.

<p>ANDERSON, R. N. BABER, E. W. BAILLIE, JOHN BAKER, W. G. BARCLAY, MISS C. D. BARCLAY, CAPT. W. DE R. BARRAUD, CHAS. D. BARRAUD, E. N. BARRAUD, F. P. BARRAUD, W. F. BEETHAM, MRS. G. BEETHAM, R., R.M. BENNETT, MISS BEST, MISS BLOOMFIELD, C. BOTHAMLEY, A. T. BRANFILL, COLONEL B. A. CLERE, F. DE J. COPELAND, MISS CREASE, MISS K. DASENT, MISS E. DRAKE, E. D. DRANSFIELD, MISS S. DRUMMOND, T. L. ENGLAND, MRS. C. F. K. GIBB, J. GIBB, W. M. GORDON, MISS A. J. GORE, H. M. HALSE, F. J. HEYWOOD, MRS. J.B. HILL, MISS M. HODGKINS, W. M. HOLMES, MISS HOLMES, MISS A. H. IGGLESDEN, C. M. IZARD, E. B.</p>	<p>JONES, MRS. L. JONES, MISS N. JONES, F. W. KENYON, MISS KIRKWOOD, H. W. KOCH, A. LAWSON, A. LOWE, MISS A. MACDONALD, D. MARTIN, A. MCKAY, A. MORTON, MISS M. E. MORISON, W. L. NAIRN, J. M. PAYTON, E. W. PERRETT, J. D. PULLAR, MISS F. V. PYNSENT, MISS. REYNOLDS, MRS. E. C. REYNOLDS, MISS M. RICHARDSON, MISS RILEY, A. D. ROCHFORD, MISS E. M. SCOTT, JOHN SKERRETT, MISS S. SPROTT, W. K. STOWE, MRS. L. STEWART, G. T. TOPLISS, MRS. P. TRAVERS, W. T. L., J.P. TURNER, E. O. WHITE, MISS K. WILLIAMS, MRS. E. H. WILSON, L. W. WINTON, J. WRIGHT, H. WRIGHT, W.</p>
--	---

Permission to reproduce the Pictures has been obtained from Artists and Owners.
 (All copyright in every case is strictly reserved.)

— ◆ —

Illustrations marked thus * are the Artists' sketches.



CATALOGUE.

OIL PAINTINGS.

No.	ARTIST.	PRICE.	
		£	s.
1 Waihanui	<i>Miss Morton</i>	6	10
2 The Bowen Falls, Milford Sound ...	<i>R. Beetham</i>	6	6
3 Wellington—A Distant View ...	<i>W. R. Barnes</i>	10	10
4 Pelorus River	<i>C. Blomfield</i>	6	6
5 Winter Supplies	<i>W. K. Sprott</i>	6	10
6 Raupo Bay, Banks' Peninsula ...	<i>Miss Dora Meeson</i>	6	6
7 Gorse Burning—Evening	<i>James M. Nairn</i>	8	0
8 Moehau Mountain, Coromandel ...	<i>E. W. Payton</i>	10	10
9 Three Reefs Down	<i>R. N. Anderson</i>	5	5
10 A Summer Evening in Milford Sound	<i>J. D. Perrett</i>	5	0
11 Old Cottage	<i>Mrs. J. B. Heywood</i>	3	3
12 English Oaks, at Eastnor*	<i>W. R. Barnes</i>	52	10
13 Pacific Surf	<i>W. K. Sprott</i>	5	5

CATALOGUE.

No.		ARTIST.	PRICE.	
			£	s.
		<i>James M. Nairn</i>	10	0
14	A Frosty Morning	<i>F. W. Jones</i>	8	8
15	Near Silverstream	<i>W. M. Gibb</i>	10	10
16	The Reefs, Island Bay, Wellington*	<i>Miss M. Hill</i>	8	0
17	Still Life—Music*	<i>C. Blomfield</i>	52	10
18	The Great Francis Joseph Glacier...	<i>Mrs. E. C. Reynolds</i>	4	4
19	Roses	<i>Mrs. J. B. Heywood</i>	5	5
20	Wadestown Road*	<i>H. Elliott</i> ...	5	0
21	Lake Poerua	<i>E. W. Payton</i>	15	5
22	On the Manukau Harbour	<i>F. W. Jones</i>	30	0
23	Lyell Bay, Cloud Effect*	<i>H. M. Gore</i>	5	10
24	In Lowry Bay—A South-easter	<i>J. Gibb</i> ...	7	7
25	In Wellington Harbour	<i>R. Beetham</i>	2	2
26	In Golden Bay	<i>Miss E. M. Rochfort</i>	2	10
27	A Child's Head—A	<i>J. Gibb</i> ...	6	0
28	Morning—Queen Charlotte Sound, Towing down a Woolship ...	<i>W. K. Sprott</i>		
29	Chain Making—Sumner Beach ...	<i>J. Baillie</i> ...	7	7
30	Lilies*	<i>W. M. Gibb</i>	5	5
31	Wellington from Railway Wharf ...	<i>R. N. Anderson</i>	31	10
32	The Red Rocks, beyond Happy Valley*	<i>James M. Nairn</i>	5	0
33	"A wee before the Sun gae'd doon"*	<i>Miss A. Gordon</i>	5	5
34	The Silvery Sea*	<i>R. N. Anderson</i>	3	3
35	Moki Hole, near Happy Valley ...	<i>E. W. Payton</i>	26	5
36	The Kaimaturi Creek	<i>W. Wright</i> ...	4	4
37	On the Waikato	<i>Miss Richardson</i>	7	7
38	Flowers	<i>James M. Nairn</i>	100	0
39	Changing Pasture—Noon*	<i>James M. Nairn</i>	6	0
40	Evening near Otaki	<i>D. Macdonald</i>	2	10
41	Moonlight			

CATALOGUE.

No.		ARTIST.	PRICE.	
			£	s.
42	The Moon is up	<i>F. W. Jones</i>	6	6
43	Loch Sping, Aberfoyle, Scotland* ...	<i>L. W. Wilson</i>	25	0
44	The Arthur River, Milford Sound— Evening*	<i>R. Beetham</i>	10	10
45	Peaches	<i>W. Wright...</i>	12	12
46	The approach of Winter (English Landscape)	<i>W. R. Barnes</i>	26	5
47	Clearing up	<i>W. Wright...</i>	6	6
48	Backwater on Hutt River	<i>J. Baillie ...</i>	10	10
49	Among the 40's	<i>Miss A. Gordon</i>	5	5
50	Near Wellington	<i>E. D. Drake</i>	3	3
51	Autumn at Wallaceville	<i>Miss A. Gordon</i>	5	5
52	Nelson Harbour—Sunset after Rain	<i>R. N. Anderson</i>	1	1
53	Wandering Thoughts	<i>W. K. Sprott</i>	5	5
54	“Down O Sun, Rise ye Fogs” ...	<i>F. W. Jones</i>	6	6
55	Moonlight in Preservation Inlet ...	<i>K. C. M. S. White</i>	5	5
56	In the Botanical Gardens	<i>Mrs. J. B. Heywood</i>	3	3
57	Harvesting	<i>R. T. Smith</i>	12	12
58	Near Evans' Bay, Wellington	<i>W. R. Barnes</i>	6	6
59	A West Coast Block	<i>K. C. M. S. White</i>	3	3
60	Collie's Head	<i>Miss Morton</i>	1	15
61	View in Poor-Man's Valley, Nelson	<i>B. A. Branfill</i>	5	5
62	Otira Gorge	<i>C. Blomfield</i>	5	5
63	Glimpse of South Island of New Zealand, from Terawhiti Hills ...	<i>G. Baker ...</i>	2	10
64	Mount Cook from the Sea—Early Morning	<i>R. Beetham</i>	10	10
65	A Lazy Sea	<i>James M. Nairn</i>	4	0
66	Ringa-Ringa Straits, Stewart Island	<i>J. Gibb ...</i>	7	7
67	After Rain, Otira Gorge	<i>J. Gibb ...</i>	15	15
68	Off Deal—A Low Sunrise	<i>W. Fell ...</i>	4	4

CATALOGUE.

No.		ARTIST.	PRICE.		
			£	s.	d.
69	Pansies—"That's for thoughts"	<i>B. A. Branfill</i> ...	5	5	0
70	Evening—Dorset Point, Wellington Harbour	<i>J. Gibb</i>	6	0	0
71	Summer's Eve—Lake Te Anau ...	<i>G. Baker</i>	15	0	0
72	Clearing after Storm... ..	<i>J. D. Perrett</i> ...	4	4	0
73	In the Manawatu District* ...	<i>A. Lawson</i> ..	7	7	0
74	My Neighbour's Garden	<i>J. Baillie</i> ...	7	7	0
75	Lake at George Sound—Moonlight	<i>G. Baker</i>	2	10	0
76	The North Road	<i>W. M. Gibb</i> ...	10	10	0
77	A Child's Head—B	<i>Miss E. M. Rochfort</i>	2	10	0
78	Backwater—Upper Hutt	<i>Mrs. J. B. Heywood</i>	3	3	0
79	Evening—Waitotara*	<i>H. M. Gore</i> ...	3	0	0
80	A Lonely Life	<i>H. Elliott</i> ...	10	10	0
81	An Autumn Day	<i>J. Baillie</i> ...	3	3	0
82	Panel—Chrysanthemums... ..	<i>Miss Richardson</i> ...			
83	The English Channel	<i>W. Fell</i>	3	3	0
84	Iris Panel	<i>Mrs. E. C. Reynolds</i>			

WATER COLOURS.

85	"The sea is lonely, the sea is dreary, The sea is restless and uneasy." — <i>Lowell</i>	<i>J. Baillie</i>	5	5	0
86	Study of Poultry	<i>Miss F. M. Hodgkins</i>	3	3	0
87	Still Waters—Upper Hutt	<i>Miss M. Reynolds</i>	3	3	0
88	Portrait	<i>Miss M. Hill</i> ...			
89	Ngauruhoe	<i>W. F. Barraud</i> ...	2	12	6
90	On the Bealey	<i>W. F. Barraud</i> ...	2	12	6
91	Christchurch Roses—Winter	<i>Miss M. Stoddart</i> ...	5	5	0
92	Study of Head	<i>Miss F. M. Hodgkins</i>			
93	High Tide*	<i>Miss N. Jones</i> ...	1	1	0
94	A Scene in Kent	<i>E. W. Baber</i> ...	2	12	6

CATALOGUE.

No.	ARTIST.	PRICE.	
		£	s.
95 Morning—Wellington Harbour* ...	Miss M. Reynolds ...	4	4
96 Sketch from the Kaka, Khandallah...	Miss K. Holmes ...		
97 Study of Head	James N. Nairn ...	5	0
98 Passing Rain Clouds—Wairarapa (Sepia)	Noel Barraud ...	3	3
99 Her Ain Fireside*	Miss F. M. Hodgkins	5	5
100 A Green Old Age*	Miss K. Holmes ...		
101 Roses—Summer	Miss M. Stoddart ...	5	5
102 Teehan	R. T. Smith ...	3	3
103 Early Spring	G. A. Robinson ...	2	10
104 Round the Rocks, Nelson	R. N. Anderson ...	2	2
105 Among the Hemlocks	James N. Nairn ...		
106 Mount Cargill, from Town Belt ...	Miss K. Holmes ...		
107 Ice and Lava, Ruapehu	W. F. Barraud ...	7	7
108 Chrysanthemums—Autumn	Miss M. Stoddart ...	5	5
109 The Cornfield of Altimarloch ...	Miss M. Hill ...	3	3
110 Hutt River—Wallaceville	Miss M. Hill ...	3	3
111 Happy Valley Beach	Noel Barraud ...		
112 Coast near Paikakariki	Noel Barraud ...	2	2
113 Spring	Miss F. M. Hodgkins	4	4
114 A Corner of Our Garden	Miss M. Hill ...	2	2
115 On the Waikato River	E. W. Payton ...	5	5
116 Portrait of J. B.	James N. Nairn ...		
117 Primroses—Spring	Miss M. Stoddart ...	3	3
118 Gottesberg, on the Rhine	Mrs. C. England ...		
119 Evening—Manukan Harbour	F. Wright ...	7	7
120 The Southern Alps... ..	W. F. Barraud ...	10	10
121 A Study	Miss I. Hodgkins ...	4	4
122 Near the Manukau Heads... ..	F. Wright ...	7	7
123 On a Western Creek	E. W. Payton ...	5	5

CATALOGUE.

No.		ARTIST.	PRICE.	
			£	s.
124	Autumn Scene, Christchurch ...	<i>D. Meeson</i> ...	2	2
125	End of Wallabi ...	<i>R. N. Anderson</i> ...	2	2
126	Nor'wester—Wellington Harbour...	<i>Noel Barraud</i> ...	4	4
127	House of Parliament (Westminster)*	<i>F. P. Barraud</i> ...	21	0
128	Valley of the Dart, Wakatipu* ...	<i>C. D. Barraud</i> ...	12	12
129	Teneriffe ...	<i>Noel Barraud</i> ...	3	3
130	On the Avon—Christchurch* ...	<i>Miss I. Hodgkins</i> ...	9	9
131	A Stormy Day—Sumner Beach ...	<i>Miss M. Stoddart</i> ...	4	4
132	St. Clair ...	<i>R. T. Smith</i> ...	3	3
133	Surrey Hills, Auckland ...	<i>R. Pheney</i> ...	5	5
134	Lake Te Anau, from the Eglinton River ...	<i>L. W. Wilson</i> ...	5	5
135	Mount Egmont, from Urenui* ...	<i>C. D. Barraud</i> ...	12	12
136	Ruapehu from West* ...	<i>W. F. Barraud</i> ...	10	10
137	Hopai, Pelorus Sound ...	<i>Miss I. Hodgkins</i> ...	6	6
138	Bui Valley, Kaikoura ...	<i>H. Elliott</i> ...	3	3
139	Lake Wakatipu, from 25 miles peg... ...	<i>L. W. Wilson</i> ...	5	5
140	A Bend in the River—Te Aroha ...	<i>F. Wright</i> ...	8	8
141	Sketch at Khandallah ...	<i>Miss K. Holmes</i> ...		
—♦—				
142	On the Hunua, Auckland*... ..	<i>T. Ball</i> ...	6	0
143	Close Winter Day—Lake Wakatipu	<i>J. D. Perrett</i> ...	5	0
144	Fox Terrier (Saucy) ...	<i>Miss Morton</i> ...	1	15
145	Lake Te Anau ...	<i>E. D. Drake</i> ...	2	15
146	Low Tide—Otago Harbour ...	<i>J. D. Perrett</i> ...	3	3
147	After Storm ...	<i>J. D. Perrett</i> ...	2	2
148	A Quiet Corner in Kew Gardens, England ...	<i>Miss A. H. Holmes</i> ...	2	2
149	N.Z. Ti Tree ...	<i>Miss F. Ross</i> ...	3	3

CATALOGUE.

No.	ARTIST.	PRICE.	
		£	s.
150	A Panel of Aram Lillies Miss E. M. Rochfort	1	10
151	Peach Blossom Mrs. L. Stowe	1	1
152	Jonquils in Jar Mrs. L. Jones	1	10
153	Panel—Magnolia Mrs. E. C. Reynolds		
154	Panel—Chrysanthemums Miss M. Hill	4	4
155	Lillium Aram K. C. M. S. White	5	5
156	Decorative Panel—Poppies Miss E. G. Culliford	12	12
157	Garden Clematis Miss F. Ross	4	4
158	Arum Miss M. Hill	4	4
159	Study of Eucalyptus Miss A. H. Holmes	4	4
160	Panel—Cactus Mrs. L. Jones	1	1
161	Panel—Lemons Miss Lightband	5	0
162	N.Z. Clematis and Mistletoe Miss F. Ross	2	2
163	A Panel of Campanulas Miss E. M. Rochfort	1	10
164	Coal Hulks at Port Chalmers* J. D. Perrett	3	3
165	In the Hutt Valley A. Lawson ...	4	4
166	Laying-to for Pilot D. Macdonald	5	0
167	“What may this mean, that thou, again, revisit'st thus the glimpses of the Moon?” B. A. Branfill		
168	Narcissus Mrs. L. Stowe	1	1
169	Up the Ngahauranga Gorge Miss K. Crease	2	10
170	Head of Lake Wakatipu W. M. Gibb	3	3
171	Near Foxton A. Lawson ...	4	4
172	Nasturtiums... .. K. C. M. S. White	2	10
172a	Clearing after Rain—Kaimatura Valley, Manukau* T. Ball	10	0
173	A Quiet Nook—Wallaceville J. Baillie	3	3
174	“So gently shuts the eye of day” T. Ball	2	0
175	Summer* Miss F. M. Copeland	3	3

CATALOGUE.

No.		ARTIST.	PRICE	
			£	s.
176	Hutt River, near Hayward's	<i>G. Baker</i>	3	3
177	Water of Leith, Dunedin	<i>G. Baker</i>	2	15
178	Study in Red Chalk	<i>Miss M. Hill</i>		
179	Bulgarian Peasant	<i>Miss E. G. Prideaux</i>	5	5
180	Scene in Kent	<i>R. T. Smith</i>	5	5
181	Still Life—Fish	<i>Miss M. Hill</i>	6	0
182	Croydon, N.S.W.—Sunset	<i>F. W. Jones</i>	6	6
183	Portrait of Boy	<i>Miss E. G. Prideaux</i>		
184	The Twins' Geyser, Wairakei	<i>C. Blomfield</i>	15	15
185	Rocks at Low Tide, Raupo Bay	<i>Miss Dora Meeson</i>	4	4
186	Cable Bay, terminus of Sydney Telegraph Cable, from Bishop's Peninsula, Nelson	<i>B. A. Branfill</i>	5	5
187	Horse's Head	<i>Miss Morton</i>		
188	Sunset	<i>T. Ball</i>	2	0
189	Convict Buildings—Milford Sound*	<i>K. C. M. S. White</i>	5	5
190	The Backwater, Waipoua River, Masterton...	<i>E. O. Turner</i>	2	2
191	Mud Flat, Nelson	<i>R. N. Anderson</i>	1	1
192	Antique Figure—Venus	<i>Miss M. Hill</i>		
193	At the Back of Moxham's Farm	<i>Mrs. J. B. Heywood</i>	3	3
194	Loch Lomond	<i>Mrs. C. England</i>	2	0
195	In the Botanical Gardens	<i>Mrs. J. B. Heywood</i>	3	3
196				
197	Three Studies from Life—Charcoal	<i>Miss Pynsent</i>		
198				
199	A Head in Crayon (a)	<i>Miss E. M. Rochfort</i>	10	6
200	A Head in Crayon (b)	<i>Miss E. M. Rochfort</i>	10	6
201	Boys on the Sand	<i>Miss E. M. Rochfort</i>	1	0
202	Panel—Convolvulus	<i>Miss Dransfield</i>	3	10
203	Peaches	<i>Miss M. Hill</i>	2	2

CATALOGUE.

No.		ARTIST.	PRICE.	
			£	s.
204	Near Happy Valley	<i>John Baillie</i>	2	2
205	Apples	<i>Miss M. Hill</i>	2	2
206	Tasman's Island	<i>Noel Barraud</i>	1	1
207	Coast Scene near Wellington ...	<i>W. F. Barraud</i>	1	1
208	Monarchs of the Bush—Gumdiggers at Work	<i>C. Blomfield</i>	42	0
209	The Golden West	<i>E. W. Payton</i>	52	10
210	Fire Screen—Cactus and Passion Flowers	<i>Miss M. Best</i>		
211	Fire Screen—Lillium Auratum and Rubrum Vinatum	<i>Miss M. Best</i>	2	10
212	Panel—Giant Trumpet Lily	<i>Miss E. V. Pullar...</i>		
213	Panel—Trumpet Lily	<i>Miss E. V. Pullar...</i>		
214	Pansies	<i>K. C. M. S. White</i>	2	2
215	Plaque—Apple Blossom	<i>Mrs. L. Jones</i>	1	5
	On Porcelain :—			
216	A Noble Lady of Venice (Copy after J. F. Leighton, P.R.A.)	<i>Mrs. E. H. Williams</i>	4	4
217	At the Golden Gate (Copy after Val Prinsep, R.A.)	<i>Mrs. E. H. Williams</i>	6	6
218	A Roman Boat race (Copy after E. J. Poynter, R.A.)	<i>Mrs. E. H. Williams</i>	6	6
219	The Card Dealer (Copy after M. C. Waller, A. P. 1891.)	<i>Mrs. E. H. Williams</i>	4	4
220	Photography—Canoes at Picton ...	<i>A. T. Bothamley</i>	1	1
221	Three Sets of Landscapes	<i>H. Wright</i>		
222	Architectural Drawing—Government Life Insurance Building, Wellington. Clere & Richmond Architects*	<i>J. S. Swan...</i>	30	0
223	Specimen drawing for Photo-Litho. Title-page of Catalogue design- ed and drawn by	<i>A. Koch</i>		

CATALOGUE.

No.		ARTIST.	PRICE.	
			£	s.
224	Two Sets Photographs	<i>J. Winton</i>		
225	Portraits—Photo's Wood Carving...	<i>J. Baillee</i>		
226	Canoes at Pelorus Sound	<i>A. T. Bothamley</i>	1	1
227	A Cloudy Day	<i>G. A. Robinson</i>	2	10
228	A Sketch	<i>G. A. Robinson</i>	2	2

WOOD CARVINGS.

229	2 Panels—Wood	<i>E. B. Izard</i>	5	5
230	1 Drawing Room Table	<i>E. B. Izard</i>	5	5
231	Original design for bracket, and of two book-shelves	<i>W. Fell</i>	1	1
232	Tablet	<i>Miss Gether</i>		
233	Footstool	<i>Miss Gether</i>		
234	Trevally (original)	<i>Miss Skerrett</i>		
235	Two Walnut Panels	<i>Miss M. Vale</i>	2	10
236	One Bird's Eye Maple	<i>Miss M. Vale</i>	1	5
237	One Oak	<i>Miss M. Vale</i>	1	5
	Waitakerei Lake	<i>Miss Maude Vaile</i>	4	10
	Nihotopu Creek	<i>Miss Maude Vaile</i>	4	4
	Evening	<i>Miss Maude Vaile</i>	4	4
	Morning	<i>Miss Maude Vaile</i>	3	10
	On the Upper Selwyn, Canterbury	<i>Miss E. G. Culliford</i>	4	4
	A Mossy Rock	<i>Miss E. G. Culliford</i>	3	3
	Autumn	<i>Miss E. G. Culliford</i>	7	7
	Set of Pen and Ink Etchings	<i>Miss M. Vaile</i>		
	Set of Cards	<i>Miss M. Vaile</i>	2	2

RESULT OF ANNUAL COMPETITIONS
OF
The New Zealand Academy of Fine
Arts Exhibition, 1892.

THE following Prizes and Certificates of Merit are offered by the Academy:—

ONE GUINEA for best work in each given subject.
Open only to Art Students and Amateurs.

Class I.

1. OUTLINE DRAWING from Cast or Antique,
In Crayon, Charcoal, or Monochrome (Oil or Water) STUDY OF
HEAD, life size. Six entries.

1	Miss Jessie Newton	First Prize
2	Mr. Giambonini	Commended

2. FIGURE, from Antique, black, white or Monochrome.
Five entries.

1	Miss E. M. Rochford	Prize
---	---------------------	-----	-----	-----	-----	-------

Class II.

STUDY FROM STILL LIFE, in Oil or Water Colour.
Three entries.

1	S. G. Jollie	Commended
---	--------------	-----	-----	-----	-----	-----------

Class III.—ORIGINAL STUDIES DIRECT FROM NATURE.

1. LANDSCAPE or MARINE STUDY, in Oil.
Five entries.

1	Miss E. Slater	Prize
---	----------------	-----	-----	-----	-----	-------

2. LANDSCAPE or MARINE STUDY, in Monochrome, for
reproduction.

(No Prize awarded.)

Class IV.

1. MECHANICAL DRAWINGS.
Five entries.

1 A. T. Wakelin	Prize
2 C. Odlin	Commended

2. ARCHITECTURAL DRAWINGS.
Four entries.

1 W. J. S. Strange-Mure	Prize
2 C. Odlin	Commended

Class V.

MODELLING IN CLAY OR WAX, from the Antique.
(No entry.)

Class VI.—ORIGINAL DESIGN IN ANY MEDIUM.

1. DECORATIVE PANEL.

2. The best Decorative Design, in colour, on Plaque or Tiles.
Three entries.

1 Miss S. Dransfield	Prize
2 Miss M. Igglesden	—

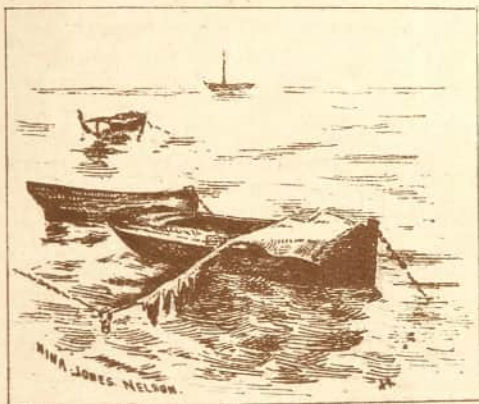
Class VII.—PHOTOGRAPHY (by Amateurs only).

- | | | | |
|------------------------------|---|---|---|
| 1. SIX LANDSCAPES, untouched | - | - | - |
| 2. SIX PORTRAITS, untouched | - | - | - |

(Not sufficient entries.)

A Prize of Three Guineas, open to all, is offered by the Council for a Design for a Certificate of Merit for the New Zealand Academy of Fine Arts, Wellington.

(No entry.)



High Tide.

93



Reefs, Island Bay.

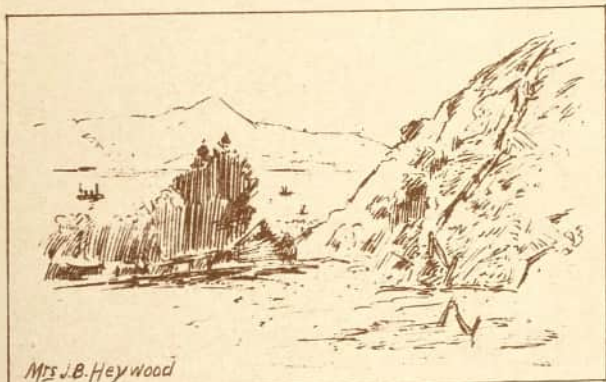
16



LILIES
John Baillie
92

30

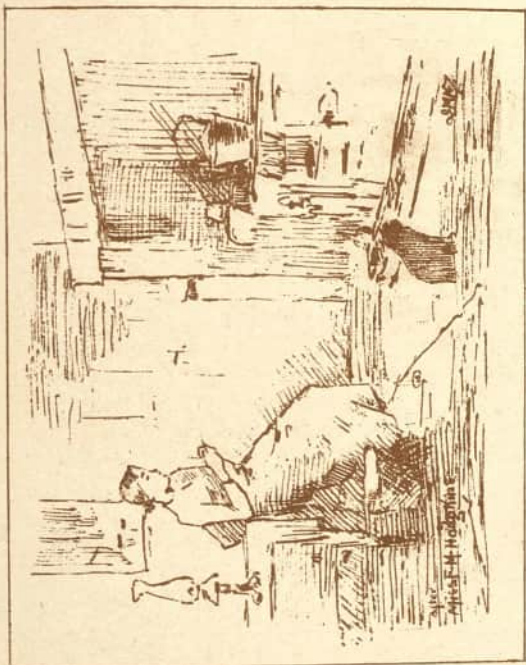
Lilies.



Mrs J.B. Heywood

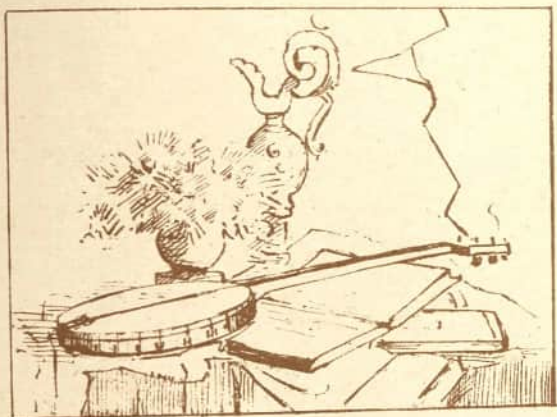
20

Wadestown Road.



Her Airy Fireside

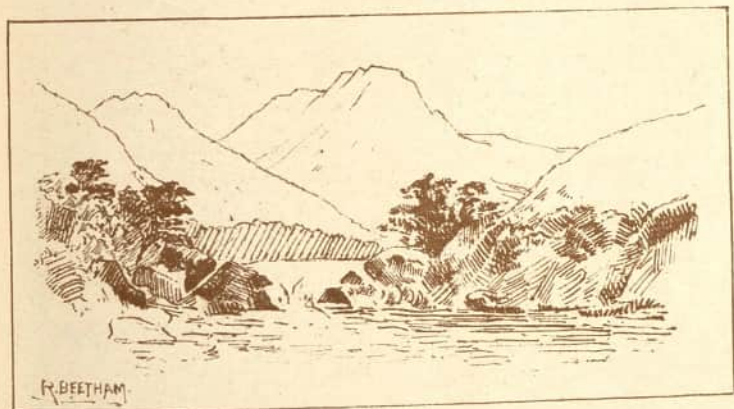
99.



MABEL HILL.

MUSIC.

17.



R. BEETHAM.

THE ARTHUR RIVER.

44.



1872. 10th Nov

Lea Spring. Atchaf. Scotland.
L. H. H. H. H.

1872.

43.



Changing Pasture. No. 1.

J. M. Noid



chain making
After - W.H. Spindell

29.



Ruapehu, from the west.

H. F. DANKS.



LILIES

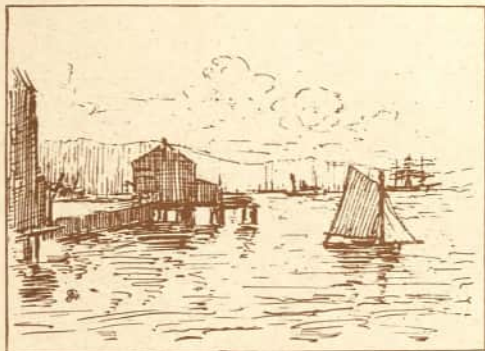
84



flowers

Miss M. E. Richardson

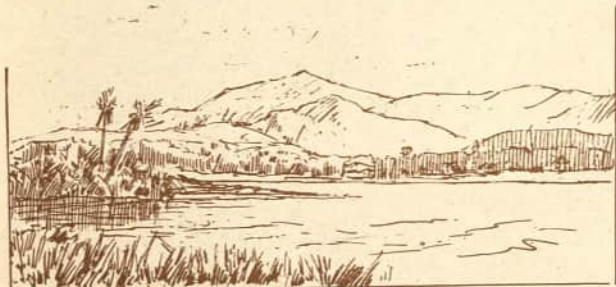
38.



34

THE SILVERY SEA.

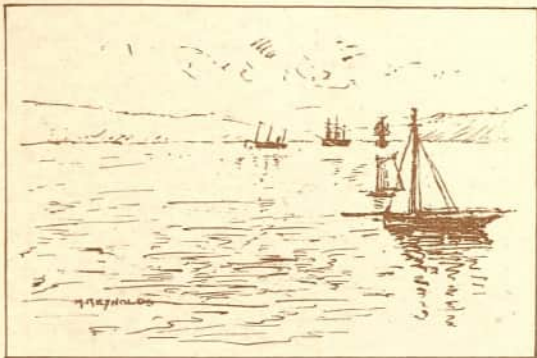
MISS A. GORDON.



A. LAWSON.

IN THE MANAWATU DISTRICT.

73



MISS M. REYNOLDS

95

MORNING. WELLINGTON HARBOUR.



C. D. BARRETT.

THE DART VALLEY, WAKATIPU.

128.



33

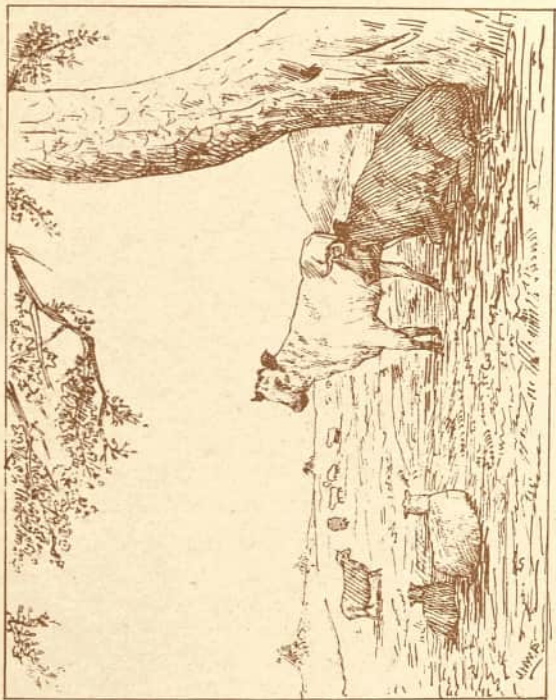
A WEE BEFORE THE SUN GAEB DOON



H. M. GORE.

EVENING, WAITOTARA.

79.



MISS COPELAND

175

SUMMER.



W.BALL. THE TIKI CORMANDEL SUNRISE.



F.W. JONES

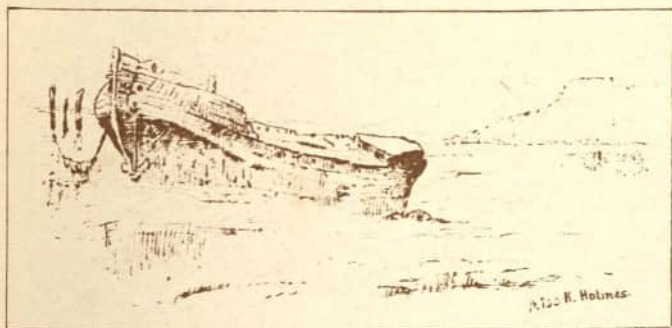
LYELL BAY, CLOUDY EFFECT.



J. Hodgkins

On the Banks of the Avon. C.H.C.H.

130.



100.

A Green Old Age.



W.P. BARNES.

ENGLISH OAKS AT EASTNOR.

12.



T. Ball.

142. *On the Hunua, - Auckland.*



T. Ball.

172.

(Clearing After Rain, Kaimaturo, Manakau.)



J. D. PERRETT.

Coal Hulks at Port Chalmers

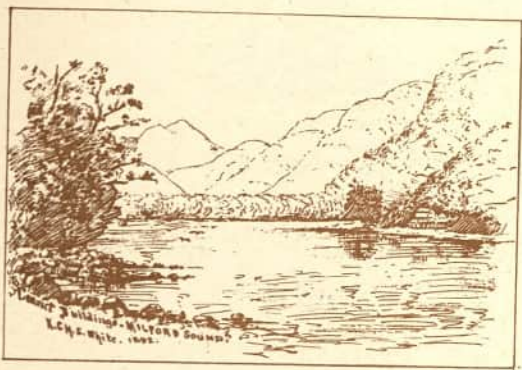
164.



R. N. ANDERSON.

32.

the Red Rocks Beyond Happy Valley.



189.

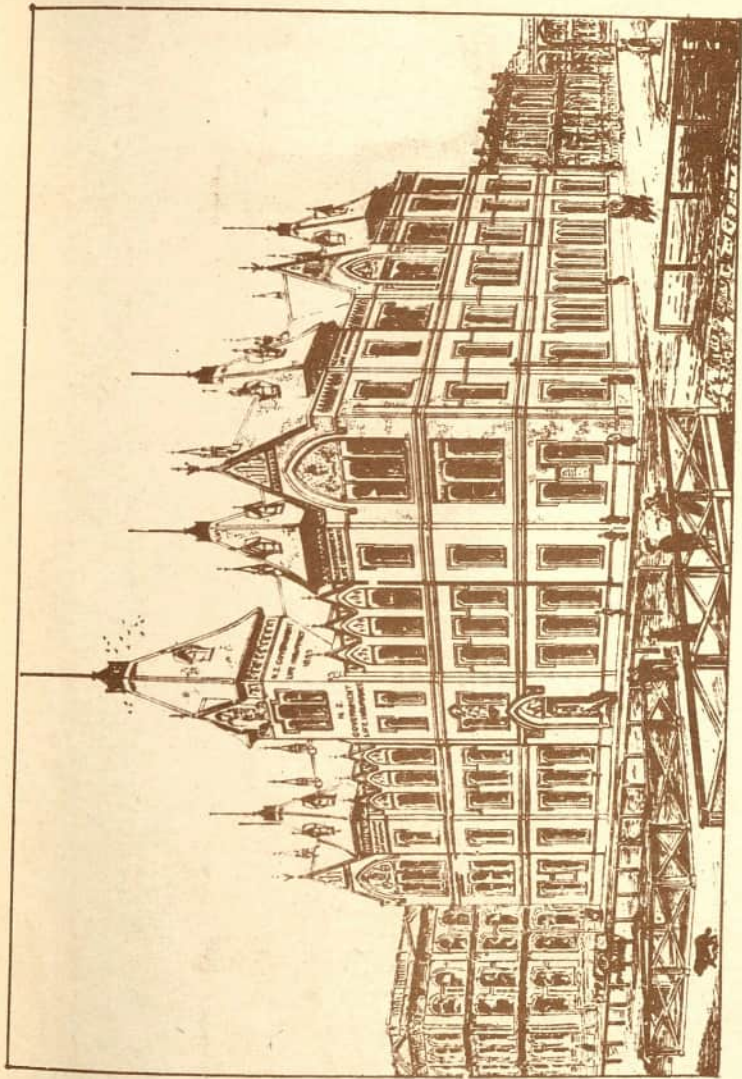


Mount Egmont from Ukarua

21. 14

G.O. BARRAUD.

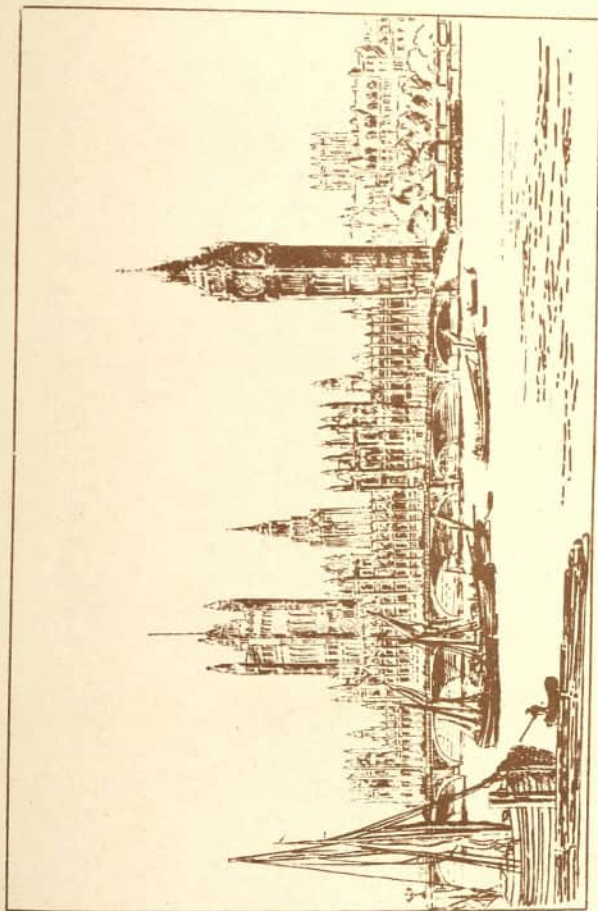
135



Drawn By J.E. Swad.

Govt. Life Ins. Building Wellington.

222.



F.R. Barrac.

Houses of Parliament Westminster

The Great Weaver Organ ❄

❄ **The Great Weaver Organ**



ON
TIME PAYMENTS,
FROM 20s. MONTHLY.

M. P. BROOKES,
MANAGER.

THE DRESDEN PIANO CO.,
LAMBTON QUAY,
WELLINGTON.

KUHSE PIANOS ➤

➤ **KUHSE PIANOS**

