



*R r roaring Forties Invercargill 2005*  
New Zealand Society of Potters

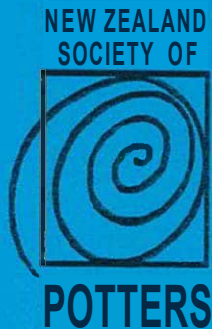
# R r roaring Forties

NEW ZEALAND SOCIETY OF POTTERS  
Exhibition Catalogue

22<sup>nd</sup> April - 22<sup>nd</sup> May

Southland Museum and Art Gallery

INVERCARGILL 2005



## **Message from the President:**

It is my pleasure to welcome you to the 46<sup>th</sup> National Exhibition of the New Zealand Society of Potters. Museums are considered to be the pre-eminent venues for pottery exhibitions and the Society is pleased to be holding out 2005 Exhibition in the Southland Museum.

The National Exhibition is held each year and is the highlight of the Societies programme. The venue for the exhibition is established in conjunction with the annual convention and -Isrotated between the north and south islands. The executive of the Society was delighted when the potters of Southland volunteered to organise the convention and exhibition. The Exhibition, as our showpiece, is a wonderful opportunity for our members and the public to see and discuss what is happening in the New Zealand clay world.

Ceramics is a diverse field, ranging from the humble domestic pot to expansive sculptural forms, incorporating an immense range of techniques and finishes limited only by the imagination and skill of the artist. Like all artists, we draw inspiration from the world around us and from the work of like-minded colleagues. The originality within each human mind is exemplified in the range of work before you at this exhibition.

Just like the ceramic objects that exist from Mycenae, Babylonia and earlier times, the work before you at this exhibition will outlast us all by thousands of years with but just a little care. We will be so pleased if you choose to be a custodian of a piece for your lifetime.

Ceramics is such a tactile art form. Look, touch, and enjoy the work in our exhibition and please visit our website, [nzpotters.com](http://nzpotters.com), where you may refresh your memories of the work in this exhibition.

On behalf of all our exhibitors I wish to thank our Southland friends for making this exhibition possible, and also thank you, the visitor, for sharing with us our passion for clay

**Neil Hey  
President  
New Zealand Society of Potters.**

## Selectors pre - select comments

### David Brokenshire

The annual exhibition of New Zealand Society of Potters has provided for over 45 years an opportunity for potters to show their best work. Over this time pottery in New Zealand has changed. At first, so called, "domestic ware" flourished; bowls, mugs, casseroles - things for everyday use. The delight of the potter and his clay and its making was simply communicated at the table.

Slowly objects being made changed. "Decorative" or "Sculptural" pieces were judged as if they were paintings or works of art. Many treasured pieces of domestic ware, fifty years old, are still enjoyed every day.

Perhaps the appreciation pendulum is swinging back and today we can appreciate pots for use but also, now, perceive that sculptural quality which they always had.

I hope the pieces presented here will communicate for years the potters love of clay, its making and its artistic significance.

## Selectors Biography

### David Brokenshire

Born Thames 1925

Served R.N.Z.A.F. World War 2

Graduated B Arch. 1951 University of New Zealand (Auckland)

Worked as a salaried architect in Christchurch and Dunedin for 30 years

Started work in clay 1960 - worked in stoneware - large coiled sculptural pieces.

Started working in porcelain 1970 and since has worked almost exclusively in this medium. Since 1979 - full time as a potter. Work has been exhibited widely in New Zealand, Australia, Japan, Britain, U.S.A, and is represented in many galleries in N.Z. Faenza, - Italy and public collections in Japan.

My pieces are freely worked by hand, frequently trying to capture a sense of movement of the wind or sea. The sheer beauty of porcelain and its wondrous response to colour are qualities which capture my heart.

#### David Brokenshire-Christchurch

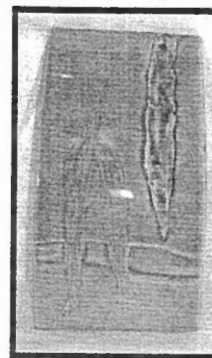


- |                      |       |
|----------------------|-------|
| 1. Nor'wester        | \$980 |
| 2. Sea Chalice       | \$490 |
| 3. Tropic Sea Flower | \$490 |
| 4. Tempest Unleashed | \$375 |
| 5. Arctic Sea Flower | \$345 |
| 6. Spring            | \$345 |
| 7. Lightning Strike  | \$275 |

## Pioneer Potters

8. Spiromorph	Barry Brickell -Coromandel	\$300
9. Intomorph		\$250
10. Eliptomorph		\$240
11. Impressions 1	Doreen Blumhardt-Wellington	\$75
12. Impressions 2		\$75
13. Bowl, Pacific Series	Len Castle-Warkworth	\$180
14. Bowl, Pacific Series		\$650
15. <sup>Bowl</sup> BotHe, Saltglaze, fluted	Mirek Smisek-Waikanae	\$2500
16. Bottle, Saltglaze		\$1000
17. Teapot, copper red glaze	Peter Stichbury-Auckland	\$400
18. Vase, Chun glaze over basic papa rock, black glaze		\$400
19. Gourd God	Graeme Storm -Auckland	\$180
20. In my Garden Grows		\$215

## Catalogue of Exhibited Works



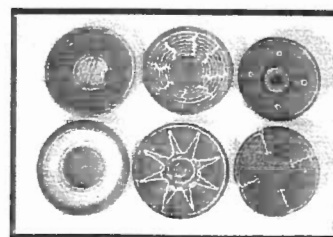
21. Brendon Adams -Auckland  
Curved Tile  
\$135



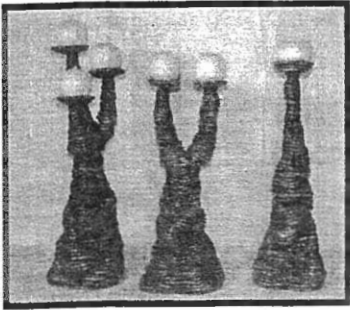
22. Graham Ambrose-Auckland  
Vessel A  
\$310

23. Vessel B  
\$270

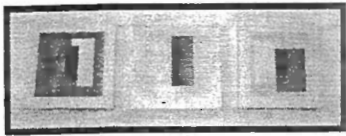
24. Eclipse Dish  
\$350



25. Lindsay Bain-Taihape  
Flying Saucers  
\$180



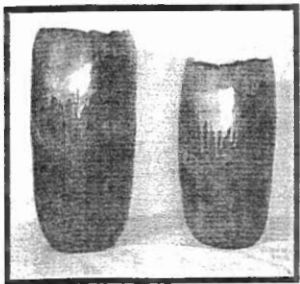
- 26. Julie Barber-Glencoe  
Back to Basics (single Candlestick)  
\$105
- 27. Back to Basics (double Candlestick)  
\$115
- 28. Back to Basics (Triple Candlestick)  
\$125



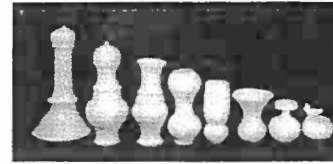
- 29. Claire Barton-Auckland  
Perceptions  
\$250



- 30. Mary Bartos-Greymouth  
Pod  
\$80
- 31. Pod  
\$65



- 32. Adrienne Bolton-Piopia  
Strata Vessel 1  
\$375
- 33. Strata Vessel 2  
\$350



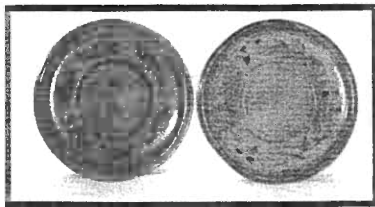
- 34. Anneke Borren-Wellington  
Birdline 3 (Set of 8)  
\$1200
- 35. Tall Lidded vase  
\$200
- 36. Flooding lidded Form  
\$160



- 37. Shannon Boyd-Auckland  
N.Z. House  
\$155



- 38. Jenny Browne-Wellington  
Small Vase  
\$80
- 39. Medium Vase  
\$110
- 40. Large Vase  
\$130

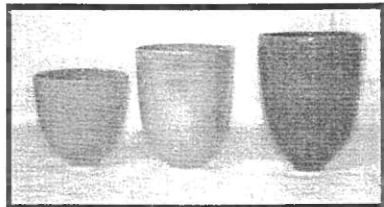


41. Stephen & Zoe Carter-Nelson  
Green Platter  
\$195

42. Blue Platter  
\$195



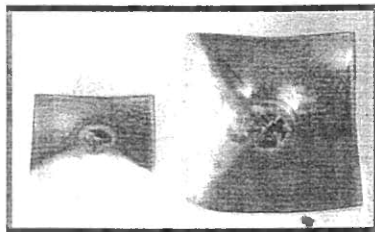
43. Tony Deanazon-Tauranga  
What Games  
\$550 Pr



44. Gulielma Dowrick-Tauranga  
Red Tulip Vase  
\$150

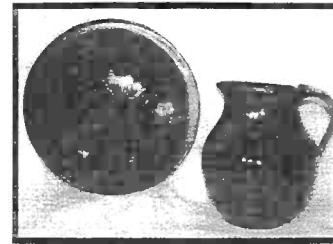
45. Gold Tulip Vase  
\$100

46. Gold Tulip Vase  
\$80



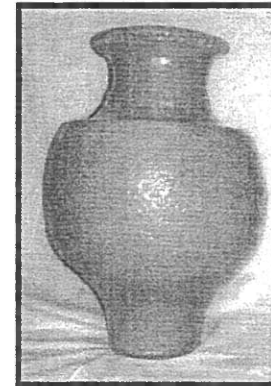
47. Margaret Edwards-New Plymouth  
In the Crater  
\$130

48. Moonlight Magic  
\$55

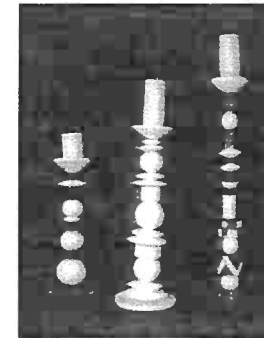


49. Frederika Ernsten-Christchurch  
Bowl  
\$76

50. Jug  
\$72



51. Sue Forward-Whangarei  
Jardiniere  
\$980



52. Renate Galetzka-Christchurch  
Black & White Totem  
Candle Stand  
\$170

53. White Totem Candle Stand  
\$190

54. Black & White Totem  
Candle Stand  
\$210



55. Beverley Glenn-Dunedin  
Body Armour  
\$285



56. Katie Gold-Nelson  
New Zealand Christmas  
\$800



57. Peter Henderson-Dunedin  
Pacifica Vessel  
\$400

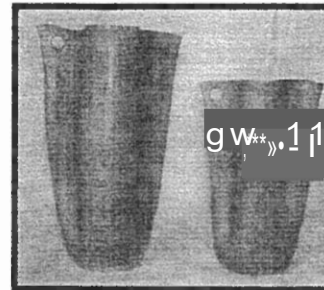
58. Striped Bowl  
\$68

59. Striped Demi Tasse  
Cups & Saucers  
\$145 Set



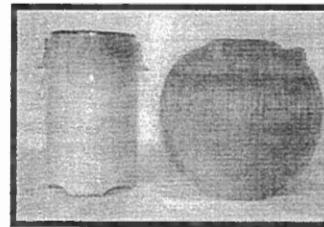
60. Neil Hey-Christchurch  
Sake Bottle & 3 cups  
\$85

61. Platter  
\$150



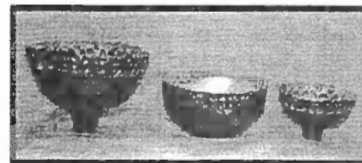
62. Joy McKelvey-Christchurch  
Jug Form 1  
\$45

63. Jug Form 2  
\$48



64. Bob McQuarry-Greymouth  
Karoro 1  
\$90

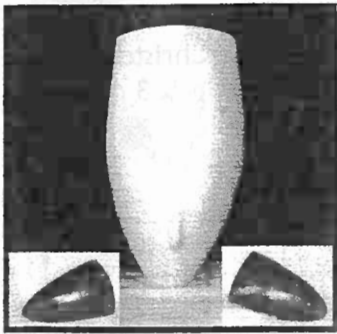
65. Karoro 3  
\$180



66. Patti Meads-Wellington  
Tree Bowl  
\$250

67. Small Tree Bowl  
\$125

68. Landscape Bowl  
\$200



69. Michael Michaels-Rangiora  
Head of Figure after Kapsala 1  
\$1,550

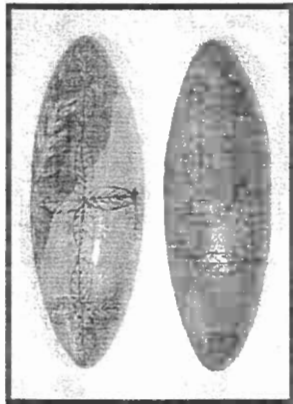
70. Head of Figure after Spedos  
\$1,250

71. Head of Figure after Kapsala 2  
\$2,500



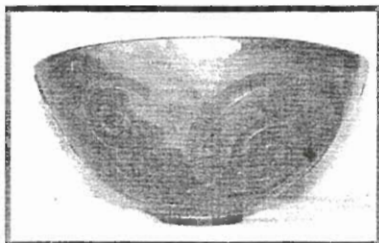
72. Jeffie Mulder-Auckland  
Just a hint of red (3 Piece)  
\$200

73. Bottle  
\$125

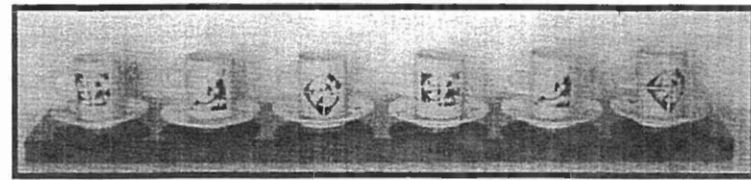


74. Linda Pringle-Lyttleton  
Fish Down South  
\$75

75. 45 South  
\$75



76. Hugh Ricard -Christchurch  
Te rarahu Bowl  
\$150

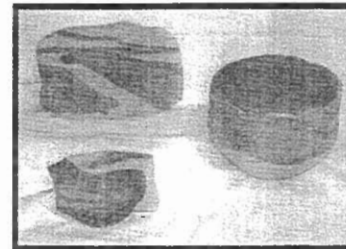


77. Darryl Robertson-Nelson  
Peace Envoy  
Cup Set and Base  
\$720



78. Rick Rudd -Wanganui  
Teapot 1  
\$495

79. Teapot 2  
\$325



80. Margaret Riley-Rangiora  
Erosion Plate 1  
\$275

81. Erosion Plate  
\$250

82. Erosion Bowl 2  
\$750

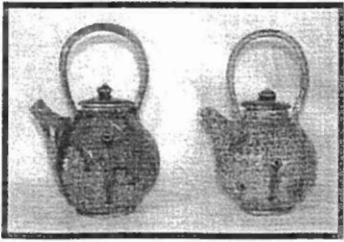


83. Jennifer Shearer-Wellington  
Trout Grid 1  
\$265

84. Trout Grid 2  
\$185

85. Tea for 2  
\$265



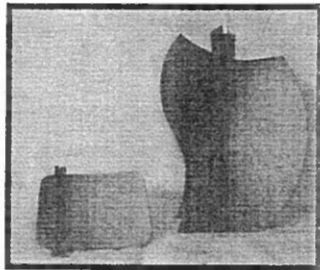


86. Janet Smith -Cambridge  
Tea Pot 1  
\$180

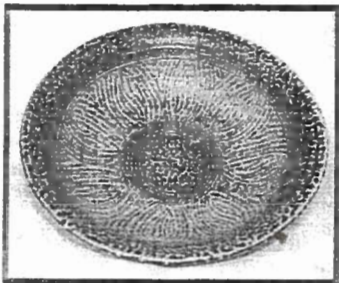
87. Tea Pot 2  
\$180



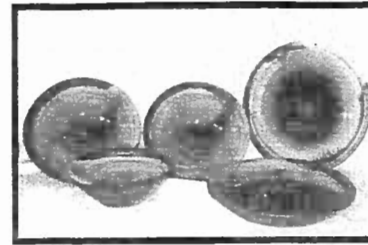
88. Elizabeth Walker -Lyttelton  
Summer Storm  
\$90



89. Ian Webster - Whitianga  
Seed Burst Series  
Plate and Vessel set  
\$225



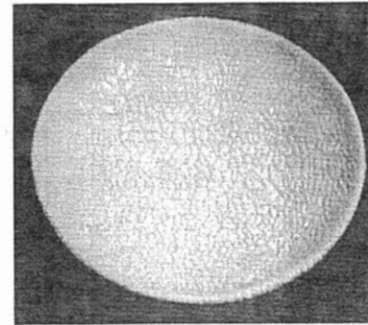
90. John Wineera-Kapiti Coast  
Salt Glazed Bowl  
\$120



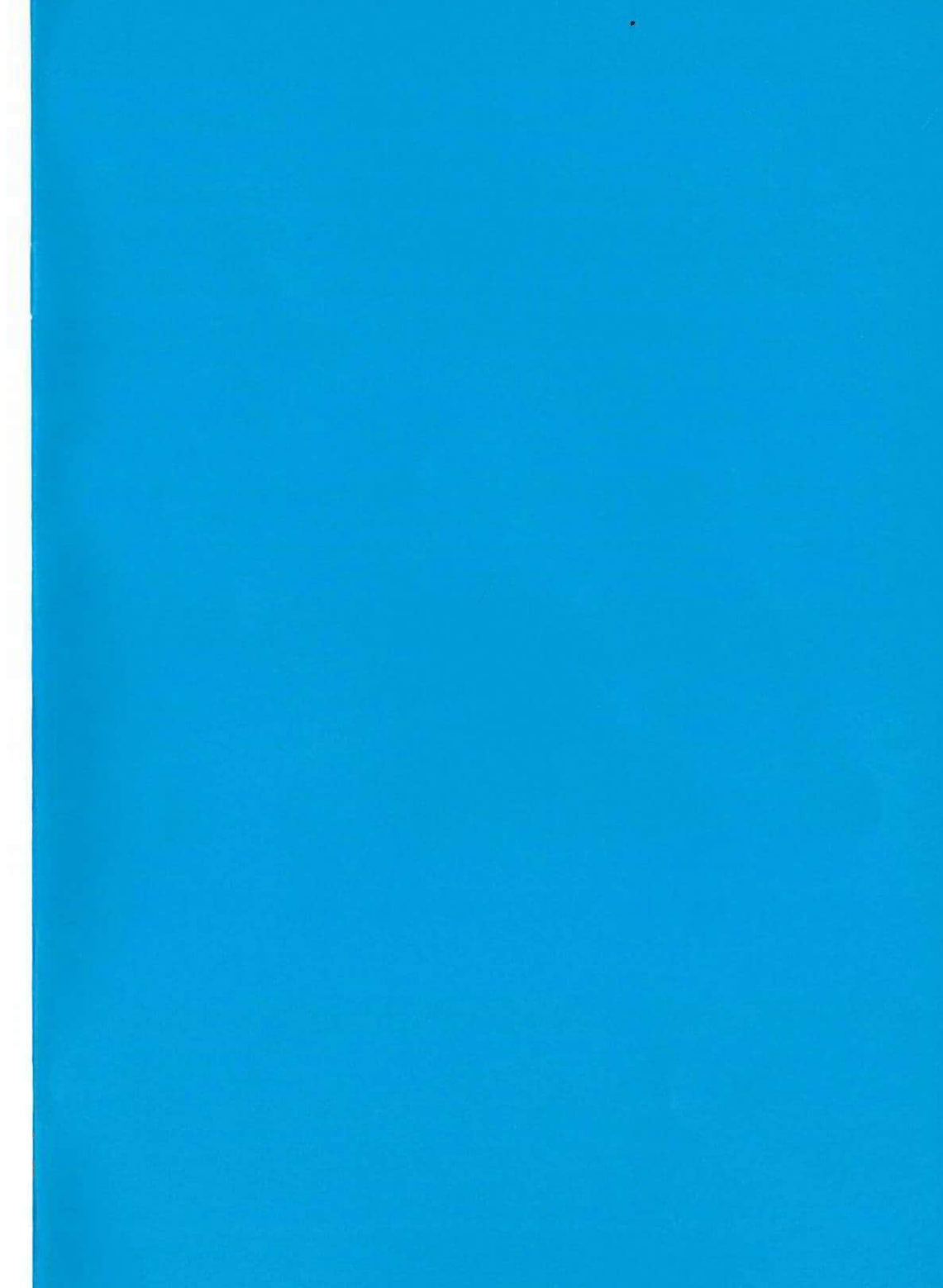
91. Paul Windspear -Nelson  
Set of 3 Bowls  
\$550

92. Platter  
\$300

93. Platter  
\$300



94. Young-chul Kang-Hamilton  
Volcano Since Him  
\$500



---

**gSPQwgjive**  
*comwvunitiesv* 

---

*Invercargill City*