



NZ Potters presents

IMERYS

NATIONAL TABLEWARE EXHIBITION

CANTERBURY MUSEUM
18-29 MAY 2016

Imerys' National Tableware Exhibition 2016

The visit to New Zealand of Shoji Hamada in the nineteen sixties inspired many to take up the craft of pottery. Soon it seemed as if every home would soon have domestic ware made individually by New Zealand potters taught the craft in pottery clubs throughout the country. Wherever it was taught emphasis was placed not just on attractive appearance, but also on sound craftsmanship and reliable functionality. Teapots should not drip, mugs should have smooth rims, handles should not fall off, plates should not wobble, vases should not scratch the table or leak their contents, wall plaques should not drop suddenly to the floor and planters should not crumble in the frost.

However, in the past twenty years or so, the balance has shifted. Increasingly, the craft is learned in the art schools and the work which is most admired and wins awards is chosen primarily on its appearance. In particular, functionality is no longer a virtue and clay sculpture has begun to dominate in pottery exhibitions. Terms like clay art, clay worker, ceramic artist, ceramicist, and art object have come into the language.

No wonder so many students in clay wish to train as ceramic artists rather than potters - it is less demanding. Not only are the hourly rates higher and the ACC levies lower, ceramic artists don't get judged on craftsmanship. Increasingly students are choosing to bypass the rigorous training in the skills of craftsmanship and head straight for the art.

Concerned that a great craft tradition is gradually being diminished, Christchurch members of NZ Potters responded to the lead of Frederika Ernsten in 1997 and held the first national exhibition of tableware, sponsored by J. Ballantyne & Co. Held biennially after that the Tableware Show was halted by the Christchurch earthquakes. But now with the generous sponsorship of *Imerys Ceramics*, NZ Potters are proud once again to present The National Tableware Exhibition in Christchurch once again. *Jim Pollard*

Opening night sales procedure

Please do not remove Sales Cards until after the exhibition has been declared open.

Collection of purchased work Your purchases should be collected from the museum on Sunday May 29 4pm – 5pm or Monday May 30 9am – 11am. Inquiries to 0226353911

SELECTOR & GUEST EXHIBITOR Chris Weaver, Hokitika

AWARDS

<i>Imerys Premier Award</i>	\$1500
<i>NZ Potters Merit Award</i>	\$500
<i>Cantaclay Merit Award</i>	\$500
<i>People's Choice Award</i>	\$100

PEOPLE'S CHOICE AWARD

Everyone who visits the exhibition is invited to cast a vote for the work they like best. At the conclusion of the exhibition the potter who made the most popular work will receive the award of \$100

CANTACLAY

Cantaclay comprises the Canterbury members of NZ Potters. They are responsible for organising and mounting this exhibition.

CREDITS

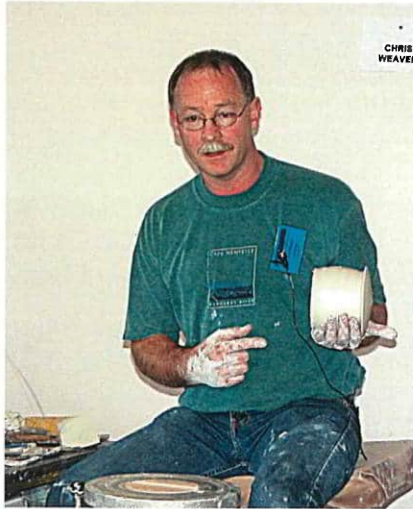
Convener: Jane McCulla
Treasurer: Frederika Ernsten
Designer: Gael Abraham
Photography: Gary Easterbrook
Catalogue: Jim Pollard
Printing: UC Print

Chris Weaver

Chris uses white high firing clay sections that are wheel thrown, then altered and assembled. He uses a selection of tools hand-made from driftwood found on the local beaches, in the forming process and to add details to the surface of the pieces.

After bisque-firing, glazes especially chosen for their ability to break on the edges of pots and pool in the hollows, are sprayed on and then electric

fired to 1250C. Form and function are most important for Chris. *I like my pots to have a simplicity of form and something of a sculptural presence. Attention to detail and truth to the material and processes are also what I try to achieve in my work.* Chris has exhibited throughout New Zealand and in Germany, the United States and Japan. He has won a number of major awards in New Zealand and in 1995 was awarded a Creative New Zealand grant, which took him to the USA, UK and Ireland. Seeing the stone sculptures of Henry Moore as well as many stone vessels heightened his interest in sculpture. The sculptural aspect and the presence of the Moore sculptures - their mass, surfaces and solidity - were qualities he wanted in his functional ware. More recently he has started a new series using clay alone. He is emulating the white surfaces and sculptural quality of the stone works he admired. The pieces are gentler and more curvaceous, inviting caress.



More than ever, through intuitive handling of clay, Chris Weaver is expressing himself with integrity. He always works directly rather than drawing first, and the clay reveals itself as he works. He repeatedly re-works the clay, perfecting the body before adding the details of spouts and handles, and the beautiful pieces reflect his love of the material and process. Helen Schamroth

Chris Weaver Hokitika

- A. Made to measure teapot \$550
- B. Made to measure teapot \$550
- C. Pitched power \$195
- D. Pitched power \$175
- E. Pitched container \$175



Gael Abraham Lyttelton

- 1. Vase \$180
- 2. Vase \$180



**Greg Barron
Whangarei**

3. Porcelain server
with copper red
\$155



**Elise Bishop
Great Barrier Island**

4. Tea set – 2 tea bowls
plus plinth \$200



**Shannon Boyd
Auckland**

5. Floral serving plate
\$145
6. Floral serving plate
\$145



**Mason Chidgey
Wellington**

7. Six turquoise cups \$300



**Sue Collins
Auckland**

8. Crescent cup \$400



**Sue Dasler
Wellington**

9. 6 bowls South Coast
\$332
10. Large bowl Kelp
\$280
11. Large bowl Sea mist
\$280
12. Large bowl Horizon
\$280
13. Small bowl Horizon
\$62
14. Small bowl Horizon
\$62



**Nina Davis
Nelson**

15. Fruit bowl \$200



**Ursula Edwards
Blenheim**

16. Slanted people
jug \$180

17. Slanted people
jug \$70

18. Slanted people jug
lilac \$70

19. Slanted people jug
turquoise \$70



**Frederika Ernten
Rangiora**

Back to the future

20. \$65

21. \$85

22. \$120

23. \$180

24. \$180

25. \$180



**Linda Forrest
Wellington**

*Porcelain jars for
everything*

26. \$135

27. \$135

28. \$135

29. \$135

30. \$135

31. \$135



**Kathryn Gates
New Plymouth**

32. Platter \$155



**Renate Galetzka
Christchurch**

Tectonic bowls

33. \$75

34. \$75

35. \$95

36. \$95

37. \$130

38. \$190



**Sarah Geary
Christchurch**

39. Three nesting
bowls \$185



**Jo Howard
Dunedin**

45. Spin platter \$160
46. Bowl of favourites
\$120
47. Set of faces \$180



**Della Goodinson
Christchurch**

40. Jug \$28
41. Serving dish
\$58



**Jinho Jeong
Auckland**

48. Inlaid coffee
dripper set \$390



**Kam Hamilton
Christchurch**

42. Shanti bottle \$80
43. Shanti bottle \$70
44. Shanti bottle \$60



**Elise Johnston &
Karen Taylor O'Neill
Dunedin**

49. Autumn colours set
\$260



**Nicole Kolig
Dunedin**

Imprinted clay

- 50. Moa egg - Staghorn fern **\$140**
- 51. Moa egg - native fern **\$140**
- 52. Moa egg - native fern **\$140**
- 53. Moa egg - Staghorn fern **\$140**
- 54. Bowl – Mahoe leaves **\$300**
- 55. 6 egg dishes – Mahoe leaves **\$238**



**Jane McCulla
Lyttelton**

- 56. Ridged platter **\$50**
- 57. Ridged platter **\$40**
- 58. Ridged platter **\$40**
- 59. Trace vessel **\$55**
- 60. Trace vessel **\$50**



**Royce McGlashen
Brightwater**

- 61. Shards of the sea **\$200**
(place setting for one)
- 62. Nautilus bowl **\$95**
- 63. Fan platter **\$75**
- 64. Fruit bowl **\$95**



**Aimée Mcleod
Wellington**

- 65. Large bowl **\$85**
- 66. Tall bowl **\$80**
- 67. Medium bowl **\$50**
- 68. Medium bowl **\$48**
- 69. Medium bowl **\$48**
- 70. Set of 6 bowls **\$225**



**Marion Mewburn
Hills Flat**

- 71. Three bowls 1 **\$380**
- 72. Three bowls 2 **\$300**
- 73. Double walled bowl **\$120**



**Sue Newitt
Nelson**

- 74. Tea for two & cookie plate **\$350**



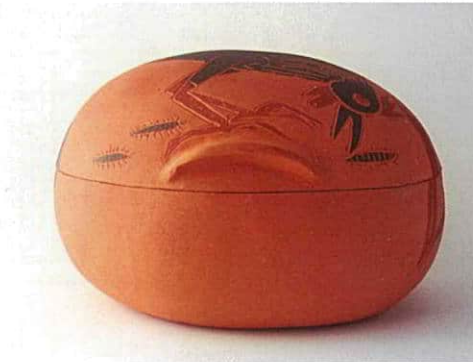
**Akane Nakao
Christchurch**

- 75. Lidded container \$60
- 76. Lidded container \$60
- 77. Small dish \$40
- 78. Small dish \$40



**Rosemary O'Hara
Plimmerton**

- 79. Baking dish \$180
- 80. Dry goods jar *raku* \$150
- 81. Dry goods jar *raku* \$150
- 82. Dry goods jar *raku* \$185



**Ann O'Sullivan
Auckland**

- 83. 6 Miffy Beakers \$180



**Anett Pilz
Mount Maunganui**

- 84. Tray with 5 shot glasses \$126
- 85. Tajine Zentangle \$279
- 86. Big plate Nautilus \$199
- 87. Bowl Zeantangle \$69
- 88. Little dish Paradox \$50



**Elena Renker
Auckland**

- 89. Shino tea bowl \$145
- 90. Shino tea bowl \$145
- 91. Shino cup \$75
- 92. Shino sake cup \$35
- 93. Shino jar \$185



**Stephen Robertson
Nelson**

- 94. Dinner for one \$265
- 95. Serving bowl \$145
- 95. Salad bowl \$245



**Charles Shaw
Nelson**

97. Vase satin crystalline
glaze **\$130**

98. Vase gloss crystalline
glaze **\$130**



**Jenny Shearer
Paraparaumu Beach**

99. Black salad bowl **\$90**

100. Six dessert bowls
\$160



**Sylvia Sinel
Hamilton**

101. Four beakers **\$150**

102. Sculptural carafe
\$295



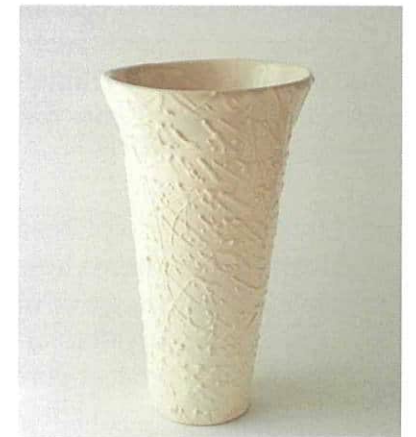
**Teresa Watson
Auckland**

103. A kitchen tool
set of sifters **\$250**



Helen Yau

104. Rain Sonata **\$60**



IMERYS CERAMICS

your partner for tableware excellence

Part of the Imerys group based in Paris, **Imerys Ceramics** designs, produces and markets high-performance mineral solutions for the ceramic industries, such as **tableware, sanitary ware, floor tiles, fiberglass or technical ceramics**. These mineral solutions include a large range of minerals such as **kaolin, ball clays or feldspars** but also **ready to use ceramic bodies** including **steatite or cordierite**, and high purity **quartz** for solar applications or electronics.

Imerys Ceramics also offers a full range of **cordierite, mullite** and **silicon carbide** based **kiln furniture** under its Kiln Furniture activity in the same range of industries:

- individual firing supports for kiln furniture: shaped parts designed to support the end product during firing
- multi parts construction components for industrial kilns: refractory protections for kiln car walls and structures for the ceramic production

MINERAL SOLUTIONS FOR TABLEWARE

From mineral solutions to prepared bodies and glazes, Imerys Ceramics is a leading partner for porcelain, vitreous and bone china tableware manufacturers. Customers worldwide include the most prestigious brands.

Imerys Ceramics' tailored-made offering to tableware manufacturers include:

- High quality products
- Laboratories dedicated to tableware formulation
- State of the art technical service
- On-site production support
- Full expertise

Kaolins & halloysite

Among its mineral solutions portfolio, Imerys Ceramics offers an extensive range of kaolin and halloysite products which can provide:

- high clay content to give the maximum economic advantage and great flexibility in developing formulations
- low to ultra-low levels of Fe_2O_3 & TiO_2 : to produce very white and translucent tableware
- a range of K_2O contents: to enable fine control of vitrification and to minimize pyroplastic deformation
- fast casting: to give optimal productivity
- good workability and high unfired strength: to provide easier processing and lower production losses
- a range of particle size distributions: to allow optimize particle packing
- low residue: to limit sieving wastes

Imerys Ceramics is present in 24 countries with more than 50 industrial facilities & commercial offices & 1800 employees worldwide. Here in New Zealand Imerys Ceramics quarries and processing halloysite in the Far North District of the North Island with its famous finished raw material products being distributed to over twenty countries.

MINERAL SOLUTIONS • KILN FURNITURE

www.imerys-ceramics.com



Your
Challenge
Our
Expertise

MINERAL SOLUTIONS • KILN FURNITURE
www.imerys-ceramics.com