

N.Z. Potters Incorporated



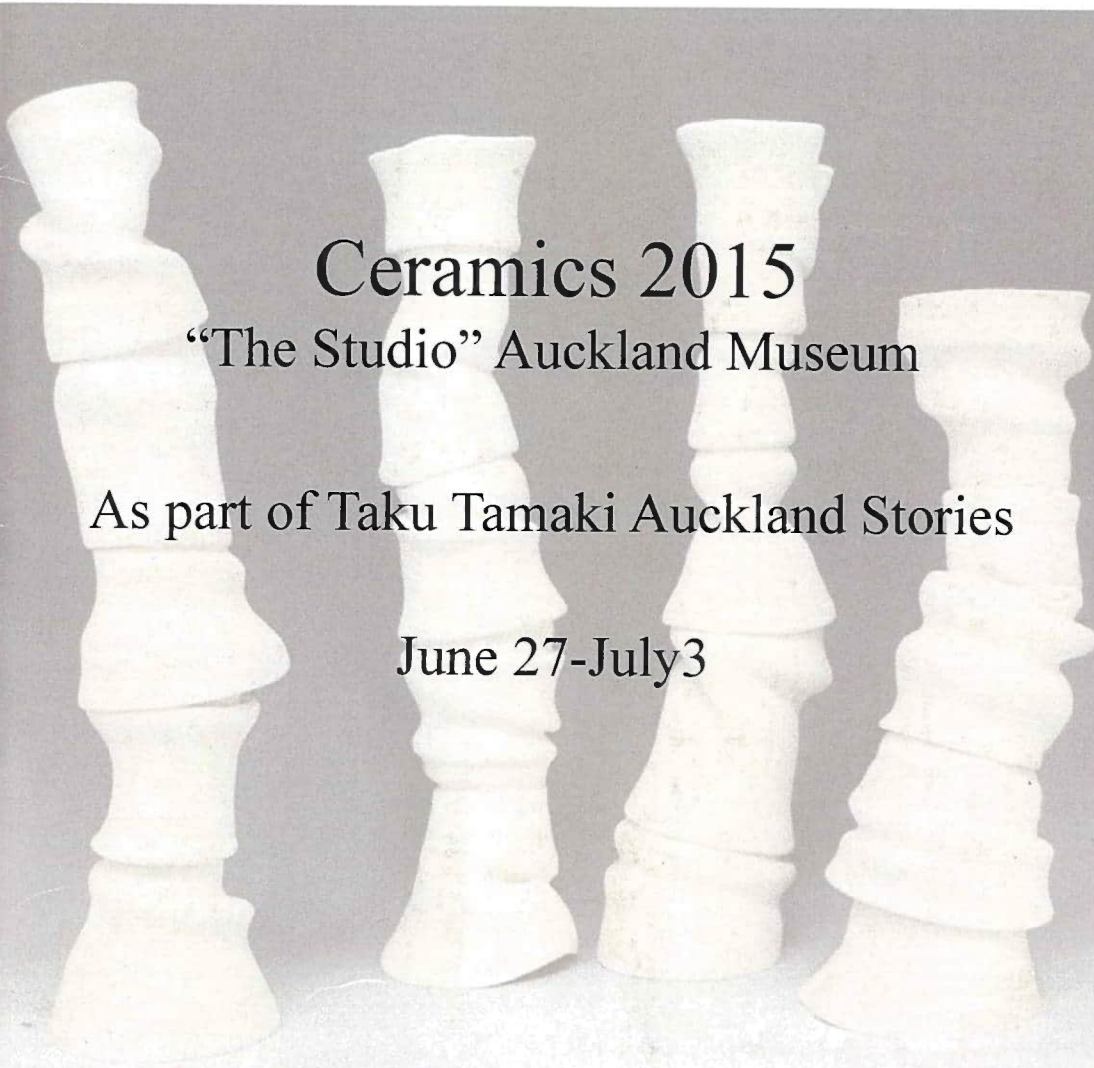
*Celebrating 50 years*

**Ceramics 2015**

“The Studio” Auckland Museum

As part of Taku Tamaki Auckland Stories

June 27-July 3



N.Z Potters Incorporated was formerly registered as society by an enthusiastic group of potters in Wellington November 2 1965..

“Mission statement:” To promote excellence in ceramics in New Zealand.

We are a national non-profit organization representing the interests of practicing potters ceramic artists, students of ceramics and all those interested in New Zealand Ceramics.

This exhibition is part of our 50<sup>h</sup> anniversary celebrations and it is liting to have an opportunity for cunent members to exhibit work at Auckland Museum.. Museums arc recognized as the natural repository of collections of rare and line ail,.

Historically New Zealand Potteiy was based on the “Leach Hamada 'connection.” Bernard Leach met Shoji Hamada and they became friends traveling (he world espousing the “mingei' philosophy. Many legendary pioneer potters were greatly influenced, including the late Lon Castle and Peter Stilchbuiy who worked at St Ives with Bernard Leach in the late AO's.

The early predominant style was high-fired functional work.

Over the years there have been a variety influences which have created changes in both making and firing techniques, three in particular arc worthy of mention.

The "Fletcher Challenge Competition" gave New Zealanders international exposure with a regular influx of work from overseas artists. This competition received regular mentions in internationally recognized magazines and motivated local artists to compete as to have a piece accepted became an accolade.

The relaxation of import controls reduced the demand for locally made domestic ware and had a severe effect on those specializing in production tableware.

‘flic introduction of tertiary study is now providing a younger generation ol artist with renewed energy.

The work presented in thii exhibition clearly demonstrates the predominant schools of thought motivating today's members.

I would like to particularly thank both Auckland Museum for creating the opportunity, which has enabled us to stage this exhibition and Campbell Hegan lor his diligence as selector.

Kelvin Bradford  
President  
N.Z. Potters Incorporated.



Annek Borren 'Yellow Wood Lidded Vase' \$280



Andrew Caran ' Brutulist Box ' \$90



Anneke Borren Yellow Wood Lidded Vase' \$260



Carol Robinson 'Towers' \$215



Charles Shaw 'Kettle Pond Bowl' \$250



Chris Johnson 'Men in Suits' \$525



DeAnne Lawford-Smith 'Close Your Eyes' \$450



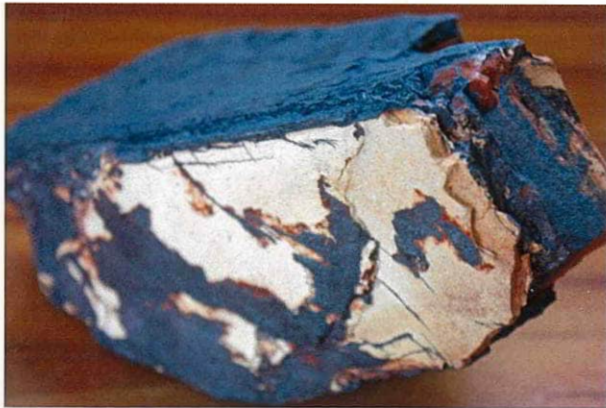
Duncan Shearer 'Albarelli Series' Woodfired \$560



Elena Renker Teabowl 1 \$150



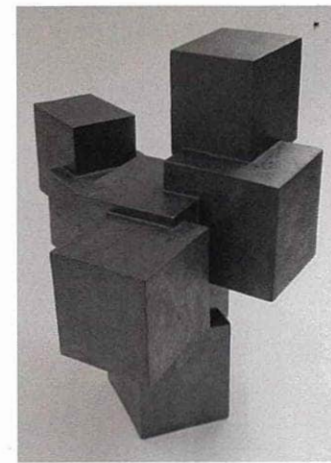
Elena Renker Teabowl 2 \$150



Elise Bishop 'Pretty on the Inside' \$950



Elise Bishop Robot World' \$1150



Graham Ambrose 'Pyrites' \$2250



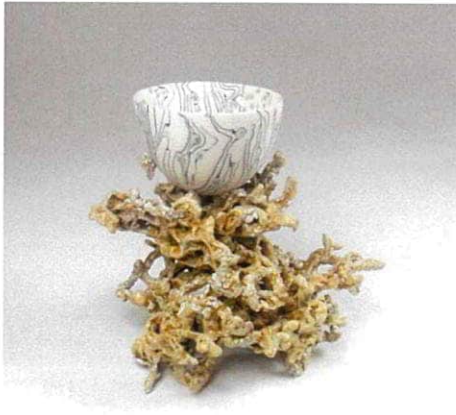
Greg Barron 'Bottle Group' \$1100



Greg Barron 'Contoured Bottle Vase' \$1200



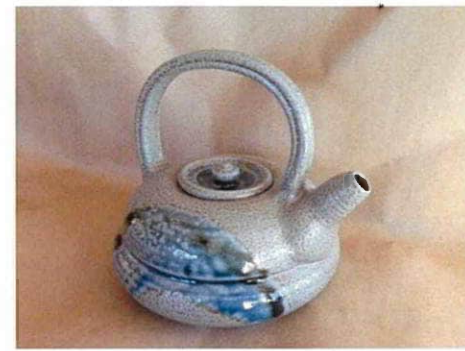
Helen Perrett 'Laura of Arabia' \$450



Helen Yau 'Water Logic' \$500



Jane McCulla 'Land Trace Vessel' \$325



Janet Smith Teapot \$150



Jenny Shearer 'Quiet Family' Group \$465



Jo Mclean 'Huia' \$350



Jo Mclean 'Saddleback' \$250



John Roy 'Sinking' \$2800



Josephine Regan' Erosion Warrington Beach Bowl ' \$150



Kate Burchett 'Equus'\$750



Kate McLean 'Urban Canopy' '\$850



Kirsty Gardiner'Inside the Memory Jar' \$1800



Liz Fea Clementine \$375



Liz tea 'Diva ' \$375



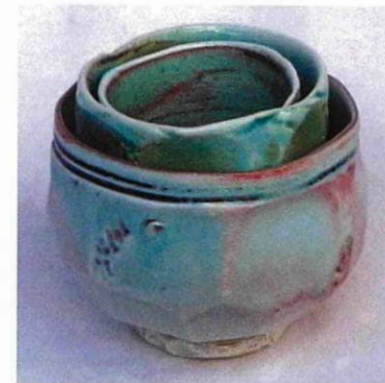
Louis Kittleson 'Anagama fired Vases' \$500



Louis Kittleson 'Anagama fired'Bluff \$800



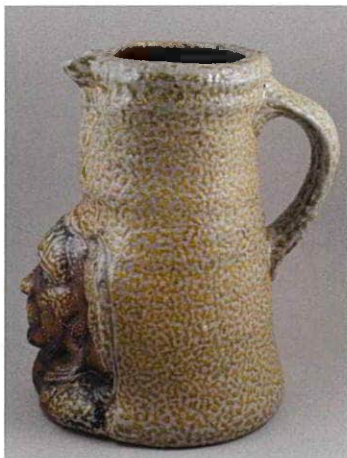
Margaret Sumich' High Tea '\$180



Margaret Sumich 'Nesting Bowls. \$110



Mark Goody 'China Baby' \$320



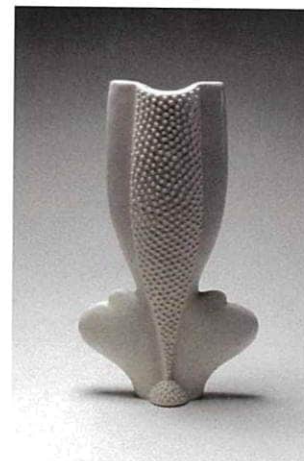
Mark Goody 'Wahine Jug' \$260



Maurice Bennett'Crater Bowl' \$190



Maurice Bennett'Crater Bowl', \$290



Merilyn Wiseman 'Echo' \$1200



Merilyn Wiseman 'Echo'\$1450

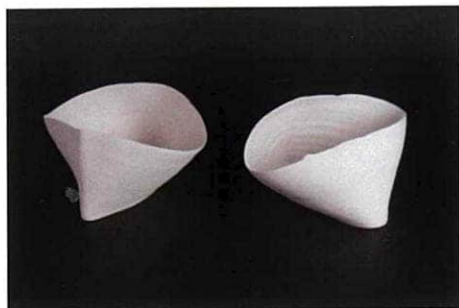




Mitsuko McQueen 'Lady' \$750



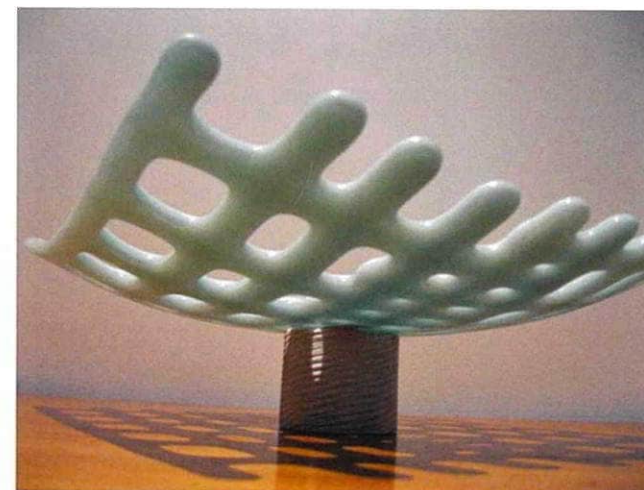
Mitsuko McQueen 'Lady' \$850



Nadine Spalter 'Altered States' \$460



Nadine Spalter 'Vessels' \$380



Nicole Kolig 'Lattice Dish' \$580



Penny Ericson 'Vessels of Memory' \$950



Peter Lange 'Geofraction' \$1200



Rick Rudd 'Poison Chalice' \$495



Rick Rudd 'Poison Chalice'\$625



Rosemary O'Hara 'Feather Series Jar' \$250



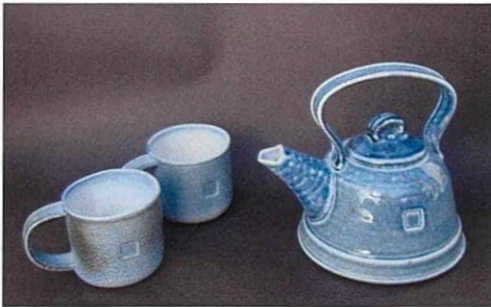
Royce Mcglashen 'Rain Showers 2' \$300



Royce Mcglashen 'Rain Showers!' \$320



Susan St Lawrence 'Crow' \$380



Suzy Dunser 'Campfire Tea' \$320



Suzy Dunser 'Oilcan Teapot' \$280

1965 - 2015



**NZ POTTERS**

Celebrating 50 Years

*sponsoredby*

“CCG Industries”  
2/5 Triton Drive  
Rosedale Albany

‘Bot Pots’  
Bishop Gate Business Center  
Bishop Dunn Place  
East Tamaki

