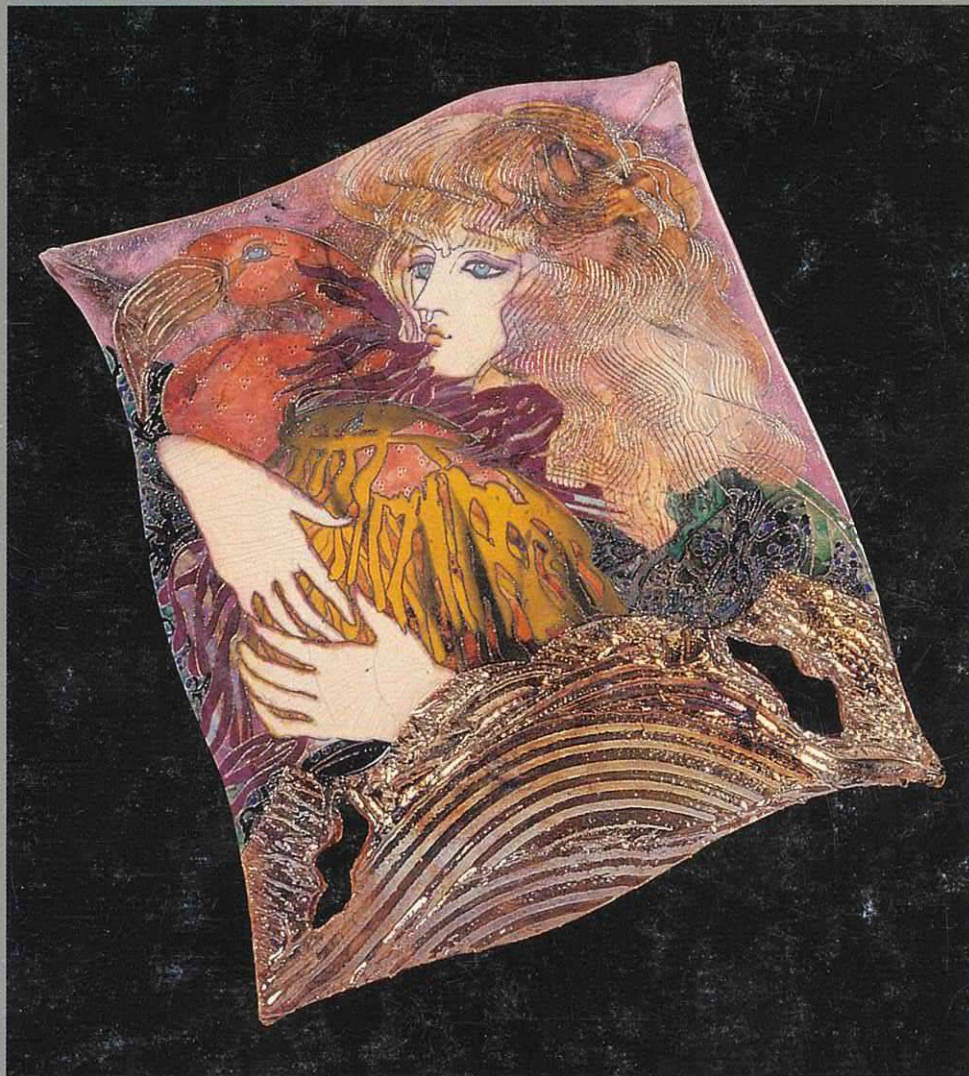


NEW ZEALAND SOCIETY OF POTTERS
THIRTIETH NATIONAL EXHIBITION
NEW ZEALAND ACADEMY OF FINE ARTS GALLERY WELLINGTON
15TH-29TH MAY 1988



THE NEW ZEALAND SOCIETY OF POTTERS

On behalf of the society I would like to extend a special welcome to our guest artists Susan and Steven Kemenyffy – from McKean, Pennsylvania, USA. Their innovative, figurative work and ability as educators will add an extra dimension to this our 30th National Conference and Exhibition.

It is the Society's hope that the National will act as a catalyst in maintaining the high ceramic standards aspired to by the Society and its members.

Over the past twenty-nine years our National has shown works of excellence. "The pursuit of excellence" has been the brief given to our changing team of adjudicators and head curator John Parker over the past two years. During this period no one style of ceramic work has been shown favour, with functional, sculptural and

conceptual works being considered on the "concept of excellence" basis.

Adjudicating such exhibitions is never easy and I would like to take this opportunity to thank our adjudicators Anneke Borren, Chester Nealie and John Parker for their efforts, in presenting this the 30th National Exhibition. We hope you will find here works that both delight and challenge the viewer.

John Crawford
PRESIDENT NZSP

SPONSORED BY



The National Bank
of New Zealand Limited



Gaye Atkinson 7

SELECTORS' COMMENTS

This exhibition shows a refining, a consolidation and a confidence in the ideas and techniques that started with the major leap forward that New Zealand pottery took in Christchurch in 1986.

It is encouraging to find that selected artists generally no longer feel the need to change with the fashion and break out of their own areas of specialisation to produce "one-off exhibition oddities."

The more successful artists have developed and branched forward with concepts which have matured through the concentrated focus on a body of work.

Of the 219 works submitted by 102 artists, 108 works were chosen for exhibition, representing 55 artists.

Anneke Borren
Chester Nealie
John Parker



Susan and Steven Kemenyffy working in the Studio

**SUSAN AND STEVEN
KEMENYFFY**

Susan and Steven Kemenyffy are world renowned for their work. They each have Master of Arts and Master of Fine Arts degrees, from the University of Iowa.

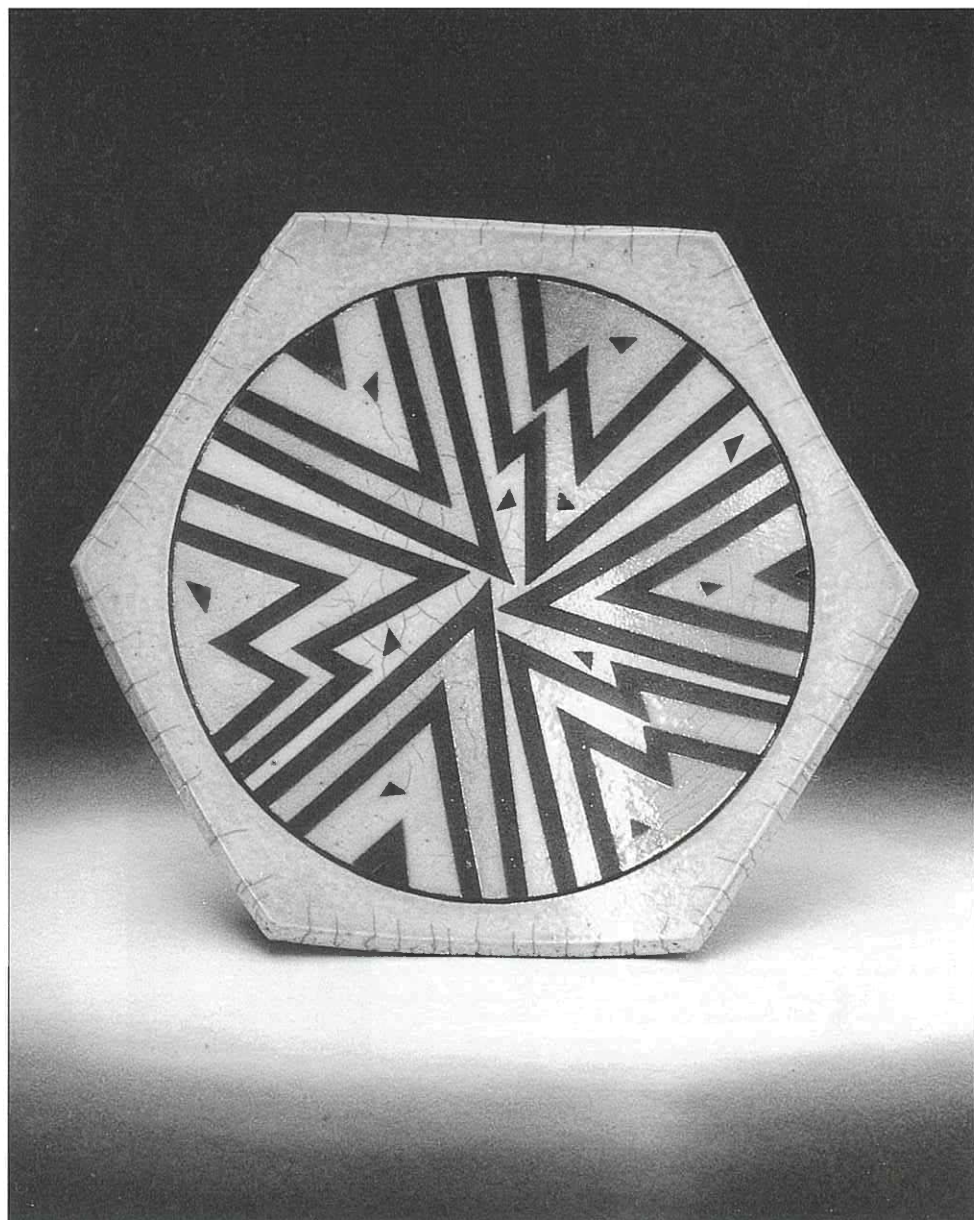
Steven is a potter and sculptor, and Susan is a printmaker, drawer and painter. They have combined their considerable talents to create exciting and colourful raku wall hangings and free standing sculptures. Steven builds three-dimensional pieces; Susan designs and draws the surface images, and finally they collaborate on the glazing and firing process.

They have exhibited throughout the USA and Canada and conducted workshops across USA, Canada, Britain, Hungary, Italy and Spain. Steven is currently Professor of Ceramics at Edinboro State University and Susan is President of the Erie Pennsylvania Art Museum.

- A A PORTRAIT OF AMY \$4500
Raku sculpture.
- B A GIFT FROM BETTY & MARTHA II \$1700
Raku wall form.
- C A STUDY IN PINK & YELLOW \$1700
Raku wall form.



A



Lyn Alves 1

■ LYN ALVES
CAMBRIDGE

- 1 HEXAGONAL RAKU \$110
Slab construction. Diesel fired in a brick kiln and glazed with a silver nitrate raku glaze.
- 2 HEXAGONAL RAKU \$95
Barium white raku glaze with cadmium red.

■ PAMELLA ANNSOUTH
TE HORO

- 3 PANEL OF TWELVE FIGURES \$850
Stoneware handbuilt forms decorated with felspathic and limestone glazes and oxides.

■ CATHERINE ANSELM
AUCKLAND

- 4 RED VASE \$250
- 5 BLUE VASE \$250
- 6 BLACK VASE \$250
Slipcast clay fired in an electric kiln with low-fire matt glazes.

■ GAYE ATKINSON
NEW PLYMOUTH

- 7 AZTEC RELIC BASKET \$75
- 8 BLUE BASKET \$75
- 9 SMALL BASKET \$50
Raku body, wheel thrown with handbuilt additions. Multiple firings in a raku kiln using copper/manganese and copper matt glazes.

■ BARRY BALL
ROTORUA

- 10 BLACK AND WHITE \$340
- 11 KITES 1 \$190
- 12 KITES 2 \$160
Earthenware clay, thrown and fired in an electric kiln to 1000C with multi-coloured glazes.

■ OWEN BARTLETT
NELSON

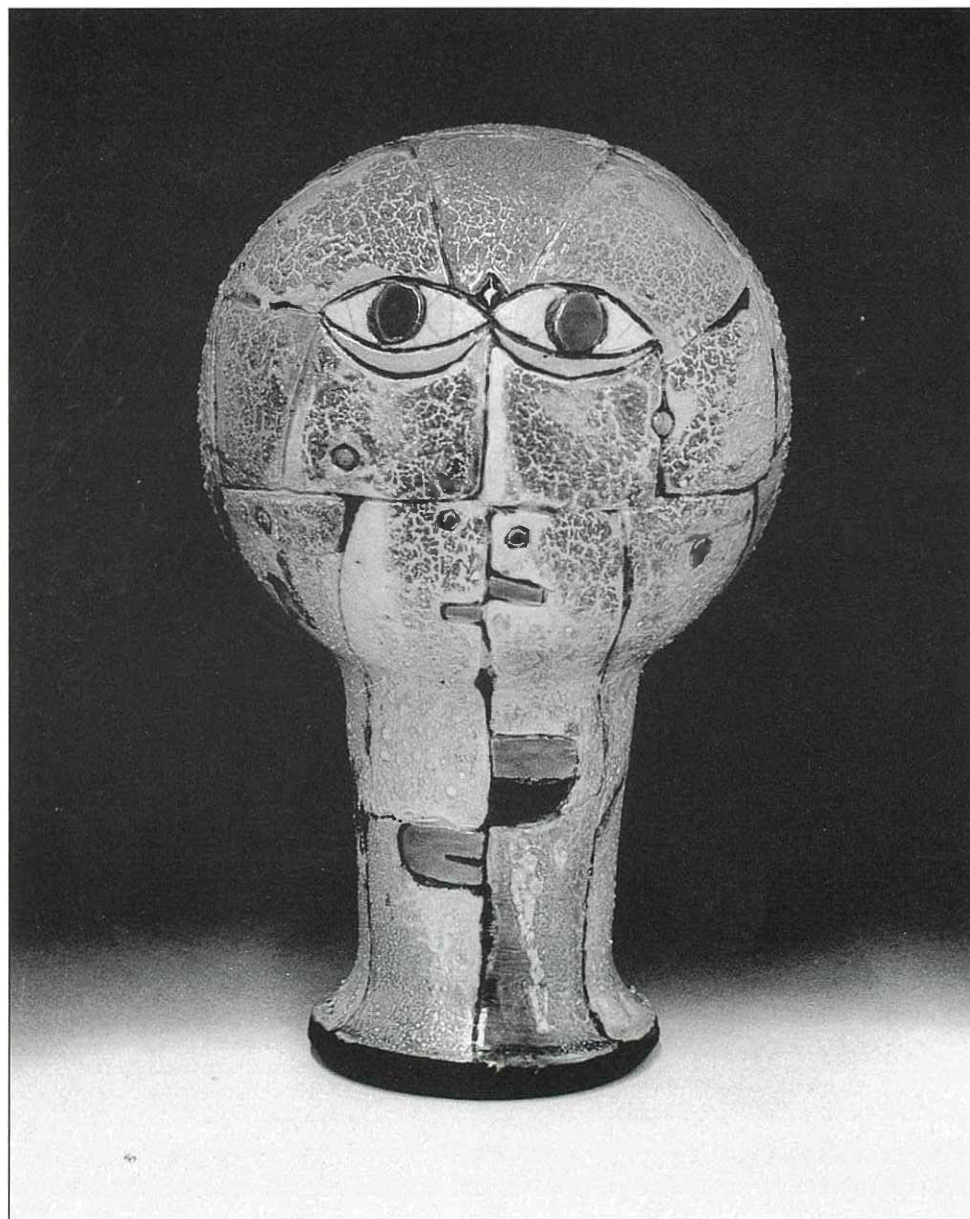
- 13 BATON VALLEY PEBBLES \$65
Porcelain clay, thrown and pit fired.

■ JON BERGE & GILL GANE
NELSON

- 14 COFFEE POT \$185
- 15 COFFEE POT \$180
Porcelain clay thrown and assembled. Decorated with on-glaze colours over a clear glaze and fired in an electric kiln.

■ ANNEKE BORREN
PARAPARAUMU

- 16 FLARED POT \$186
- 17 WHALEBONE PENDANT POT \$450
Stoneware clay thrown and fired in an oxidising kiln to 1290C, decorated with black oxides brushed on black glaze. Pendant by Owen Mapp.



Pamela Edwards 31

■ BARRY BRICKELL
COROMANDEL

18 RATA FORM \$1350
Terra cotta clay with inlay, coiled and wood-fired.

■ MURRAY CLAYTON
WELLINGTON

19 TEAPOT \$60

20 BOWL \$30
Stoneware clay thrown and fired with LPG using 'landscape' glazes including airbrush techniques.

■ JOHN CRAWFORD
NGAKAWAU via WESTPORT

21 DUSTY'S DREAM \$880

22 DUSTY'S DREAM \$880

23 DUSTY'S DREAM \$770
Terra cotta slab construction fired in an oxidised atmosphere to 1100C using low temperature glazes.

■ ROY COWAN
WELLINGTON

24 POT \$250

25 POT \$150
Stoneware slab coiled. Engraved with black slip-glaze on a light body and salt fired.

■ GULIELMA DOWRICK
WELLINGTON

26 SALAD BOWL N.F.S.
Earthenware clay. Thrown and gas fired to 1200C with a felspathic stoneware glaze and oxide brush decoration.

■ BARRY DOYLE
FOXTON

27 RAKU SPHERE \$175
Stoneware wheel thrown sphere. Raku fired with copper matt glaze.

■ CHRIS DUNN
WEST COAST

28 SET OF 7 BOWLS \$175
Opaque stoneware with green lustre and gold lustre trim. Glaze fired in an electric kiln to 1280C then refired with lustres to 800C.

■ MARGARET EDWARDS
NEW PLYMOUTH

29 SUPER NOVA No. 7 \$80
Stoneware clay wheel thrown and fired in an electric kiln with cobalt crystalline glaze.

■ PAMELA EDWARDS
PALMERSTON NORTH

THE KLEE FAMILY

30 MOMMA \$400

31 PAPPA \$400

32 AND BABY \$200
Grogged clay, coiled in a mould with wheel thrown neck. Low fired raku.



Moyra Elliott 34

■ MOYRA ELLIOTT
AUCKLAND

- 33 DISH "POST MODERN RAMPANT" \$200
- 34 DISH "POST MODERN RAMPANT" \$200
Terra cotta press moulded, slip painted and fired in an electric kiln with a fritted lead transparent gloss glaze.

■ VIC EVANS
NELSON

- 35 VESSEL "WOMEN AND FLOWERS" \$400
Low fired clay thrown and added. Fired in an oxidising atmosphere with a magnesium glaze.

■ LAWRENCE EWING
DUNEDIN

- 36 JAR \$950
Stoneware clay thrown, double glazed with white over tenmoku, then reduction fired with gas. Handle grommets made from tarred Europe rope - Indian hemp.

■ JOHN FEATONBY
WHAKATANE

- 37 PIT FIRED POT \$480
Wheel thrown and burnished. Fired to 1000C, then sawdust fired with chemicals. Waxed surface.

■ STEVE FULLMER
NELSON

- 38 ZUNI FABLE \$300
- 39 ZUNI FABLE \$300
- 40 ZUNI FABLE \$300
Stoneware clay, thrown and altered then fired in low temperature saggars using alkaline glazes.

■ PETER GIBBS
NELSON

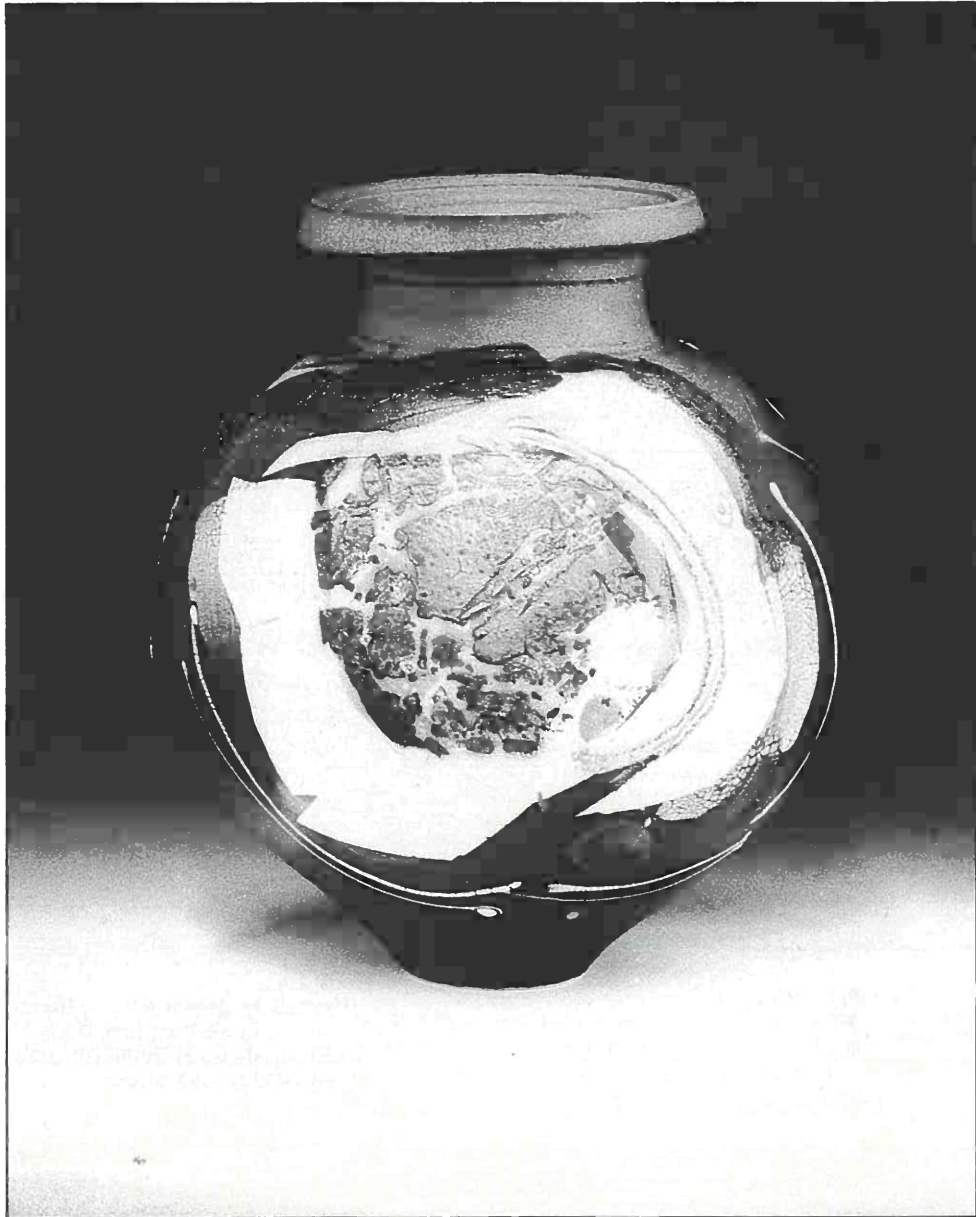
- 41 VASE \$50
Stoneware clay wheel thrown, wood fired, ash and salt glaze.

■ DAVID GRIFFITH
NELSON

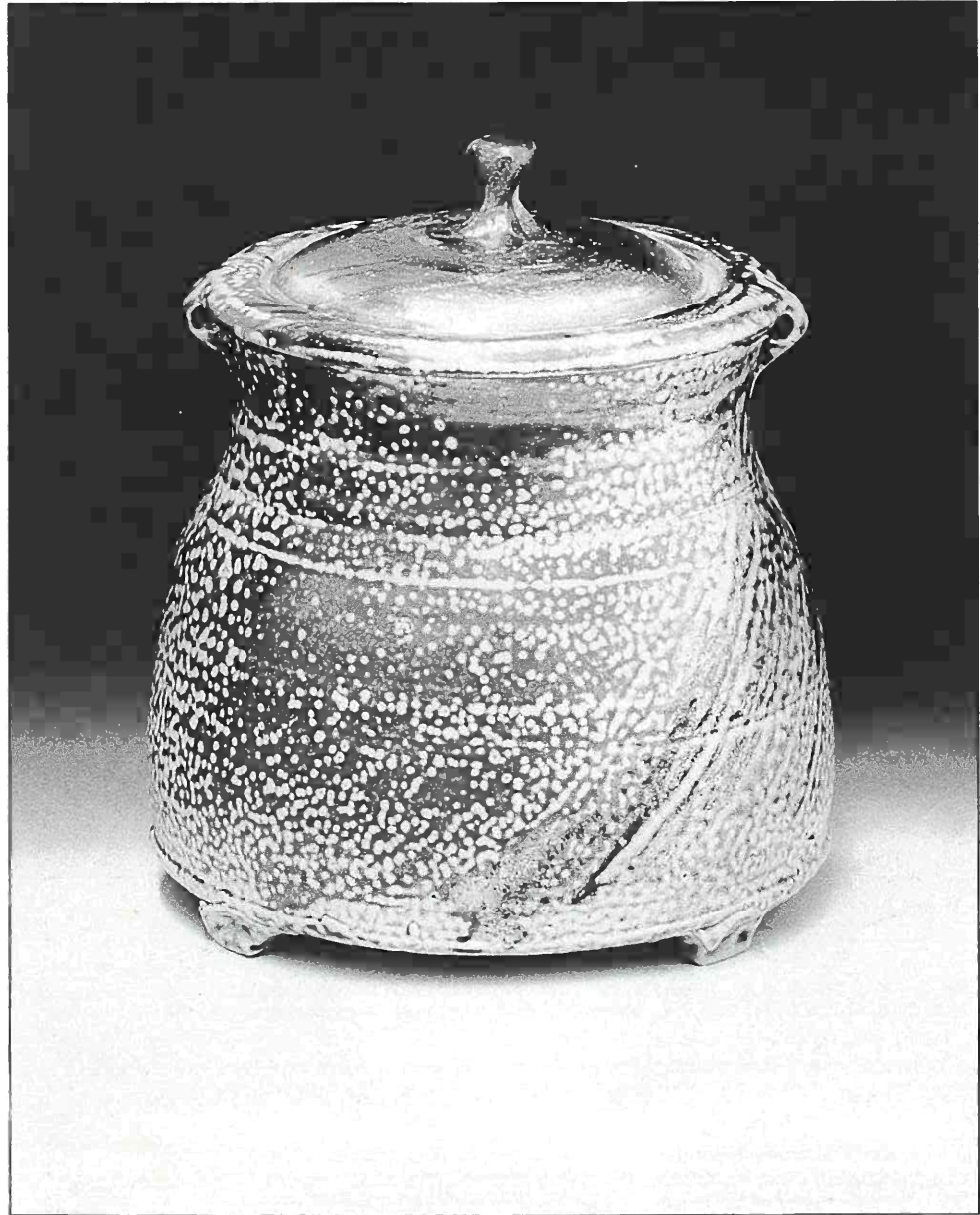
- 42 SLAB FORM - L.P. SERIES \$130
- 43 SLAB FORM - L.P. SERIES \$130
- 44 SLAB FORM - L.P. SERIES \$130
Earthenware slab forms assembled with thrown additions. Fired in an electric kiln and airbrushed with commercial low temperature glazes.

■ DAVID HUFFMAN
NORTHLAND

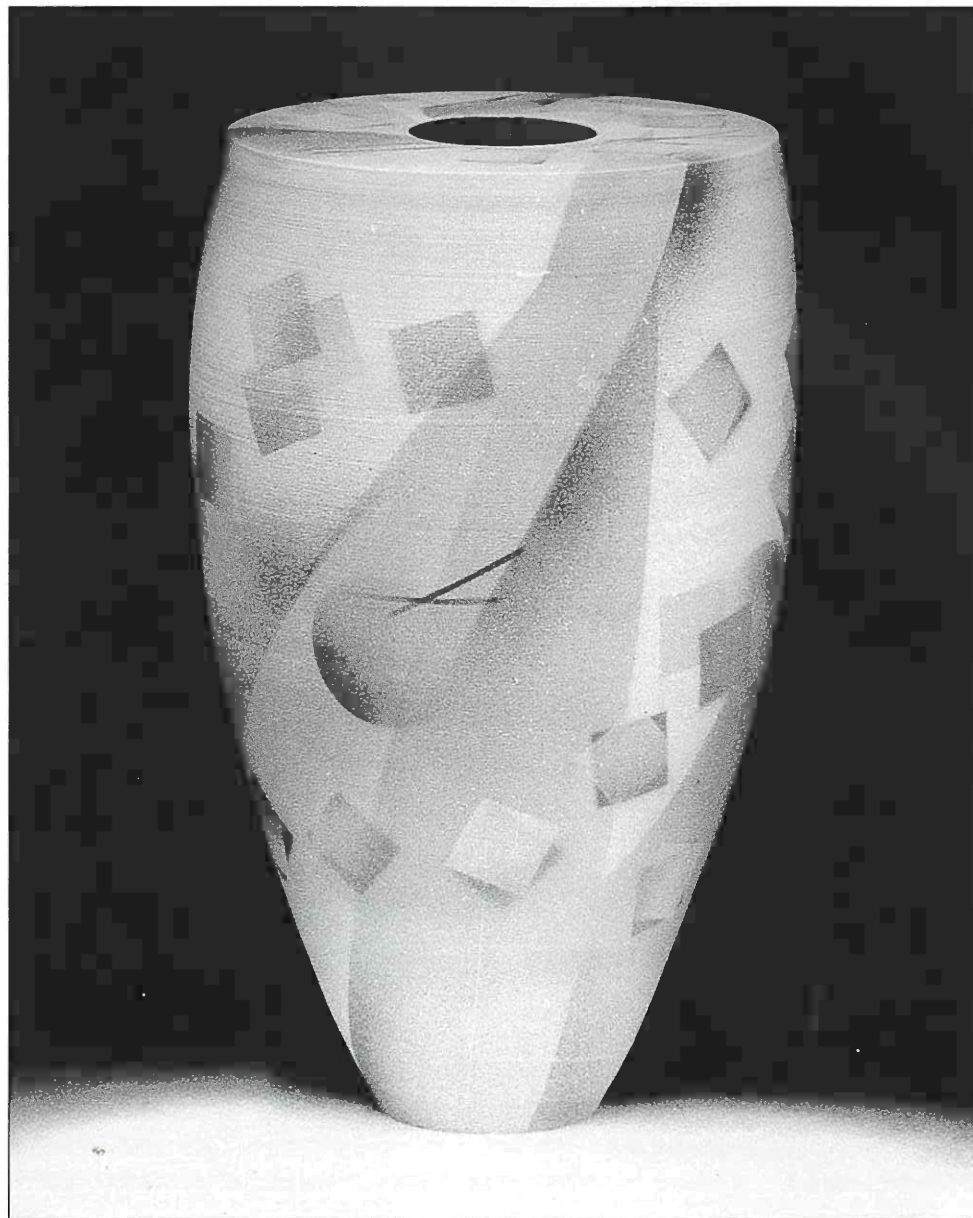
- 45 BOWL \$95
Stoneware clay thrown and electric fired in an oxidising kiln. Black Albany glaze and chrome-tin pink crystal glaze with copper.



Barry Ball 12



Chloe King 62



Ian Hutchison 52

■ MAUREEN HUNTER
WELLINGTON

- 46 LANDSCAPE PLATE \$175
- 47 LANDSCAPE PLATE \$265
- 48 WHIRLPOOL BOWL \$295
Stoneware clay handbuilt and fired
in a gas raku kiln with copper
oxide.

■ DIANE HUTCHISON
WELLINGTON

- 49 'COMMUNICATIONS'
FORM I \$550
- 50 'COMMUNICATIONS'
FORM II \$500
- 51 'TALL COMMUNICATIONS'
FORM III \$450
Terra cotta clay thrown and
decorated with stained slips then
gas fired.

■ IAN HUTCHISON
WELLINGTON

- 52 TERRA COTTA FORM \$850
- 53 TERRA COTTA FORM \$650
- 54 TERRA COTTA FORM \$450
Terra cotta clay thrown and
decorated with stained slips then
gas fired.

■ RAEWYNE JOHNSON
WANGANUI

- 55 REFERENCES I \$300
- 56 REFERENCES II \$225
- 57 REFERENCES III \$150
Terra cotta clay, coiled, pinched
and fired in an electric kiln to
1101C, then decorated with
acrylics. The vessel is used as a 3
dimensional canvas integrating
clay and paint with their
associated tactile qualities and
historical references.

■ JOANNE KILSBY
HAMILTON

- 58 MADREPORA \$77
- 59 BAMBINOPORA \$66
Stoneware clay, thrown and altered
with added appendages. Electric
fired using barium matt glaze.

■ CHLOE KING
HAVELOCK NORTH

- 60 JAR \$250
- 61 BOTTLE \$95
- 62 LIDDED POT \$65
Stoneware clay wheel thrown and
oil fired to 1300C. Salt glazed.

■ GEORGE KOJIS
WANGANUI

- 63 VESSEL FOR THE
ANSWERMAN \$550
Stoneware handbuilt lidded
sculptural form. Reduction fired
using a shiny glaze.



Meg J Latham 64

■ MEG J. LATHAM
NELSON

64 SIX DRINKING VESSELS \$132
Porcelain clay, handbuilt and electric fired to 1280°C.

■ GEORGE C. LELIEVELD
HAMILTON

65 ROCKFORM SCULPTURES (3) \$125
Stoneware clay, pinched and burnished then pit-fired with oxides and salts.

■ ROYCE MCGLASHEN
NELSON

66 KITE DAY PLATTER \$330
Slab built porcelain fired to 1300°C with sulphated decoration.

67 MEADOWS \$300

68 AUTUMN DAYS \$200
Thrown porcelain fired to 1300°C with sulphated decoration.

■ HELEN MASON
COROMANDEL

69 COROMANDEL I \$200

70 COROMANDEL III \$200
Stoneware handbuilt slab forms, gas-fired using various glazes.

■ WENDY MASTERS
PARAPARAUMU BEACH

71 SET OF HILLSIDE BOXES \$525
Porcelain with added grog and fine particles of driftwood and pumice. Sculpted from a solid block of clay, which is then hollowed out. Gas kiln fired to 1280°C in reduction. The colour and sheen come from the fired beachstuff.

■ PATTI MEADS
WELLINGTON

72 PRECIOUS EGG \$88

73 PRECIOUS EGG \$120

74 BOX \$145
Porcelain – the eggs are handbuilt – the box wheel thrown. Fired in an electric kiln. Black mirror glaze with gold and platinum lustres.

■ DANNY MOORWOOD
WAITAHUNA, OTAGO

75 BLACK AND WHITE SPHERE \$130
Stoneware clay wheel thrown and fired in an electric kiln.

■ GAELEEN MORLEY
TARADALE

76 OTATARA SERIES No. 32 \$99
Stoneware clay, thrown and fired in an oxidised atmosphere.

77 OTATARA SERIES No. 33 \$99
Stoneware clay, thrown and raku fired.



George Newton Broad 85

■ TUI MORSE
AUCKLAND

- 78 MARBLED PORCELAIN BOWL \$30
- 79 MARBLED PORCELAIN BOWL \$40
- 80 MARBLED PORCELAIN RING BOX \$40
Wheel thrown porcelain fired, unglazed, in an electric kiln to 1250C+ and then polished with silicon carbide paper and lustre sprayed. Fired for a third time to 750C.

■ JO MUNRO
UPPER HUTT

- 81 FRUIT FORM \$75
- 82 FRUIT FORM \$175
- 83 FRUIT FORM \$280
Earthenware clay thrown and altered then burnished and saggar-fired with sawdust and sulphates.

■ GEORGE NEWTON BROAD
PALMERSTON NORTH

- 84 BLACK AND WHITE RAKU \$100
- 85 BLACK AND WHITE RAKU \$86
- 86 BLACK AND WHITE RAKU \$72
Wheel thrown and fired in an LPG raku kiln with an alkaline glaze.

■ ROSEMARY O'HARA
WELLINGTON

- 87 BAKING DISH \$78
Earthenware clay, thrown and decorated with stained slips and gas fired.

■ CECILIA PARKINSON
AUCKLAND

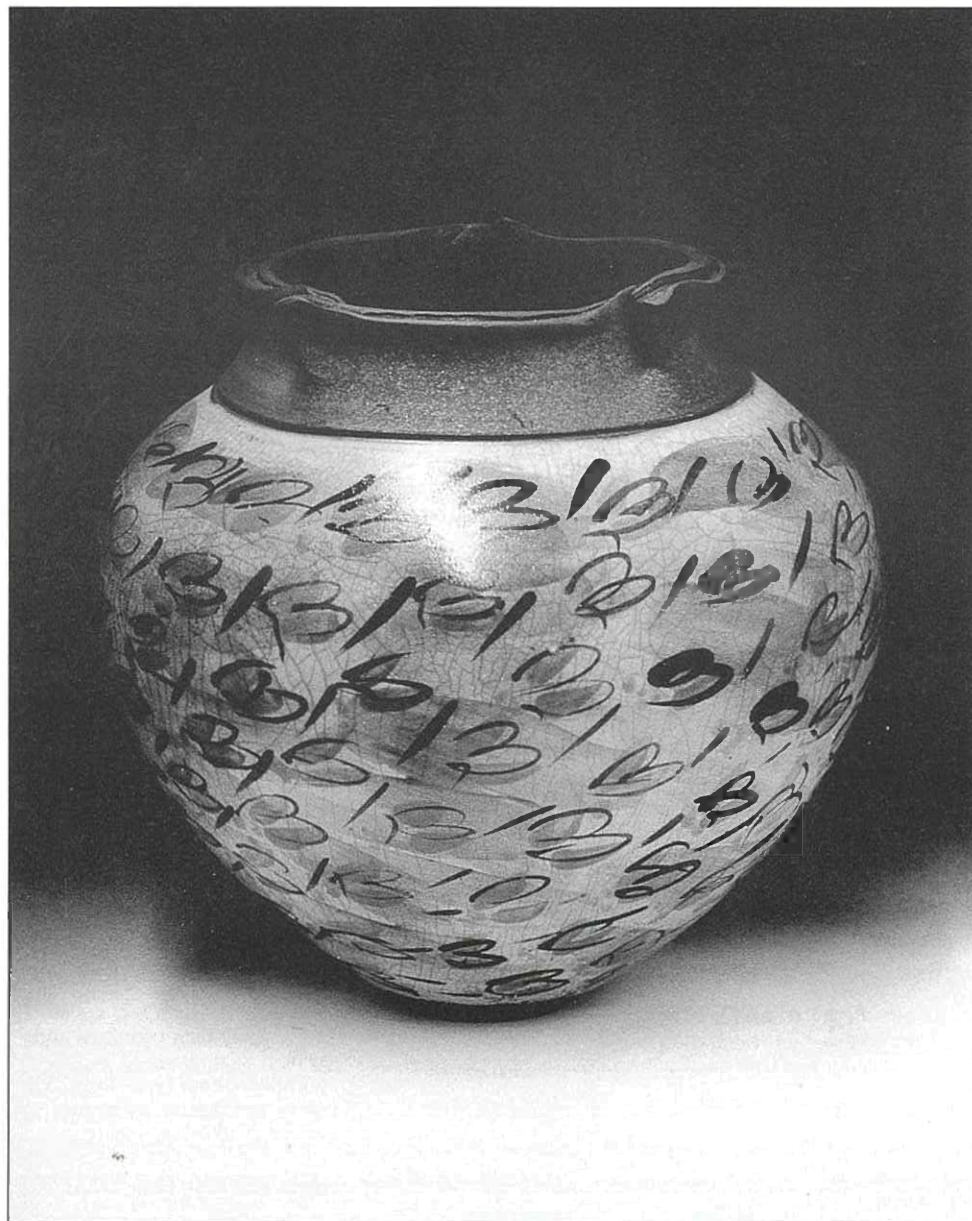
- 88 AGATE CONICAL BOTTLE \$65
- 89 AGATE CONICAL BOTTLE \$50
- 90 AGATE BOWL \$45
Porcelain, thrown with silicon carbide and copper. Fired in an electric kiln to 1240C with a talc matt glaze.

■ RUSTY RITCHIE
STRATFORD

- 91 VASE \$50
- 92 VASE \$30
Stoneware clay wheel thrown and fired using wood as fuel – the wood ash forming the glaze.

■ RICK RUDD
WANGANUI

- 93 LAND MOVEMENT \$950
- 94 LAND MOVEMENT \$850
Terra cotta clay pinched, coiled and scraped, then raku fired and gas fired in an oxidised atmosphere both times to 1075C. Glazed sections have a barium glaze with 10% black stain.



Tony Sly 97

■ TONY SLY
HAMILTON

- 95 "FRESH FIELDS FOR YOU"
SERIES – JAR No. 89 \$120
- 96 "FRESH FIELDS FOR YOU"
SERIES – JAR No. 90 \$120
- 97 "FRESH FIELDS FOR YOU"
SERIES – JAR No. 91 \$120
Thrown and altered then raku
fired to 1000C in an LPG fibre
kiln. Decorated with polychrome
slips and clear crackle glaze.

■ MIREK SMISEK
TE HORO

- 98 BOWL \$800
White stoneware thrown and cut.
Reduction fired to 1300C in a gas
kiln using felspathic glazes.

■ ROBYN STEWART
WAIWERA, NORTH AUCKLAND

- 99 "TANIWHA" \$950
Earthenware clay – handbuilt,
carved and burnished, then dung
fired.

■ CARROL SWAN
AUCKLAND

- 100 BLACK OPAL SHAPES (4) \$250
Slip cast earthenware fired in an
electric kiln. Black earthenware
glaze with lustres.

■ ARIE VAN DYK
SILVERSTREAM

- 101 BOWL \$200
Stoneware clay thrown and gas-
fired with reduced copper glaze.

■ PENNY WALKER
EASTBOURNE

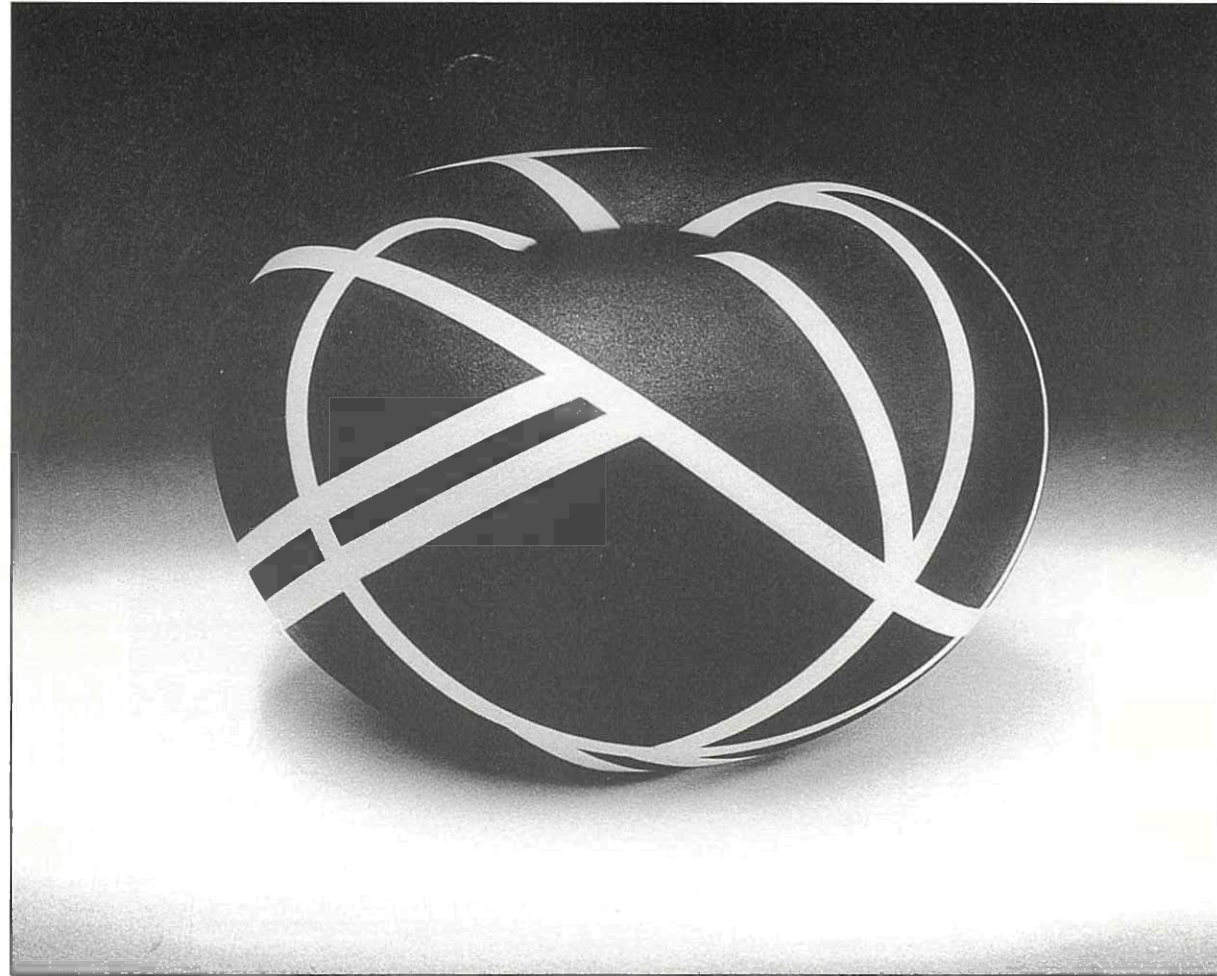
- 102 TEAPOT FORM \$85
Earthenware clay thrown and
handbuilt and decorated with
coloured slips.

■ CHRIS WEAVER
HOKITIKA

- 103 FUMED POT \$120
- 104 FUMED POT \$180
- 105 FUMED POT \$180
Thrown and altered, lightly slip-
glazed then salt-fumed to a low
temperature in an anagama type
kiln.

■ GLORIA YOUNG
WELLINGTON

- 106 PITCHER PICTURE \$95
- 107 PITCHER PICTURE \$95
- 108 PITCHER PICTURE \$90
Earthenware clay assembled from
thrown and handbuilt parts. Fired
to 1155°C in an electric kiln using
majolica decoration and glaze.



Danny Moorwood 75

ACKNOWLEDGEMENTS:

NATIONAL CERAMICS
WELLINGTON '88
CONVENTION COMMITTEE.

Patti Meads: Chairperson
Mary Smith: NZSP Delegate
Jacqui Hayward: President of
Wellington Potters Association
Raeburn Laird, Ngaere Adams:
Treasurers
Sheila Brown: Secretary
Judy Bismark
Beryl Buchanan
Gulielma Dowrick
Flora Christeller
Wendy Masters
Julie Obren
Margery Smith

The New Zealand Society of Potters
would like to thank the National Bank
for their generous sponsorship of this
exhibition, and the following for their
assistance to the convention:
General Motors of NZ: printing
Coastal Ceramics: clay jewellery
materials & prize
Wendy Masters: initial fundraising
John Lawrey: Auditor
Palliser Advertising

Without the generous sponsorship of
the National Bank and the close co-
operation of the New Zealand Academy
of Fine Arts, Wellington "88" would not
have been possible.

As president of the New Zealand
Society of Potters, I would like to take
this opportunity to sincerely thank our
sponsor and the Academy on behalf of
the Wellington "88" committee and our
membership.

All memorable events require planning
and co-ordinating. Wellington "88" is
truly fortunate in having such a strong
convention committee. Patti Meads'
energy has forged the group into a hard
working and efficient team. I would like
to also thank Wendy Masters who has
worked so diligently on the art work as
well as donating funds from the sale of
her work to initiate the convention
fund.

Hours of donated time and hard work
particularly from the Wellington "88"
Convention Committee have made this
conference and exhibition such a
success.

John Crawford

CREDITS

Exhibition Display: John Parker
Photography: Ian Hutchison
Catalogue Design: Gwyn Bright
Convention Graphics: Wendy Masters,
Jean Hastedt.

Cover photograph: Susan and Steven
Kemenyffy – “A Gift From Betty &
Martha” II Raku Wall Form.

SPONSORED BY



**The
National
Bank**
of New Zealand Limited