



New Zealand Society of Potters
24th National Exhibition 1982

FOREWORD

This year the Department of Trade and Industry are conducting an update of the review of the Ceramics Industry in New Zealand. What's that got to do with the N.Z.S.P. Annual Exhibition you may ask?

Well, Government reviews are designed to make industries more efficient. Handcrafted pottery, it has been deemed, is part of the New Zealand Ceramics Industry. Potters, however, feel that apart from the common denominator — CLAY — we are not in any other way connected with this Industry. We are not efficient. We do not pretend to be so, nor do we want to mend our ways even for the Department of Trade and Industry. The very essence of our work would be under threat if we ever lost our ability to make mistakes, spend time out to think, look and enjoy what goes on around us and generally allow our emotions and personalities to be translated into our work. These idiosyncrasies cannot be "reviewed" in the sense of statistical information.

The work you will find in this National Exhibition is made by individuals, each working in entirely different ways, specialising in subtly different approaches to clay, resulting in an amazing range of pieces which will be treasured because of their individuality.

Surely the contribution made by craftspeople in this day and age of computerised sameness will be protected and nurtured by society, for what it is. Efficiency isn't always the answer. Hopefully our individuality will be encouraged to blossom by bureaucracy, allowing potters and public to enjoy the fruits of these New Zealand Society of Potters National Exhibitions. Welcome to this our 24th!

Sally Vinson
President N.Z.S.P. '82

CONDITIONS OF SALES:

Pots are purchased only after payment in full or at least half deposit is paid (the full balance due when the item is collected at the end of the exhibition).

A payment or deposit is **not** refundable **nor** transferable.

On opening night **only** an intending buyer must collect the sales ticket bearing the number of the item being purchased. This ticket is then to be shown at the sales desk in order that the purchase may be registered in the sales book. Payment to be made either in New Zealand currency or by cheque payable to **Auckland Studio Potters Incorporated**. Mark cheques Not Negotiable.

Note: Sold pots not collected will be returned to exhibitor and become the purchaser's responsibility to arrange for collection.

Purchasers and Exhibitors:

Please collect purchased pots, those N.F.S. or unsold pots from the Exhibition Hall on: Monday 1st November 10am-4.30pm.



Renton Murray

Ann Ambler

Renton Murray

AUCKLAND REGION Selector: Chester Nealie



Chester Nealie

Ann Ambler, Wellsford		
1	Teapot — Saltglazed Stoneware	45
John Anderson, Wellsford		
2	Vase — Saltglazed Stoneware	54
Catherine Anselmi, Epsom		
3	Smoked Form — Porcelain	60
4	Smoked Form — Porcelain	45
5	Smoked Form — Porcelain	35
6	Smoked Form — Porcelain	40
7	Smoked Form — Porcelain	40
Frank Bates, Warkworth		
8	Bottle — Stoneware	48
9	Plate — Stoneware	NFS
Marjorie & Trevor Bayliss, Remuera		
10	Bowl, crackle glaze — Stoneware	40
Rosemarie Brittain, Henderson		
11	Pigeon Pair — Porcelain	38
12	Tree for Eve — Porcelain	35
13	Three Parrots — Porcelain	35
14	Garden of Eden — Porcelain	35
Richard Cadness, Titirangi		
15	Pot — Stoneware	120
Chris Cockell, Oratia		
16	Sphere — Raku	185
17	Sphere — Raku	95
Jan Cockell, Oratia		
18	Bottle, ash glazed — Porcelain	50
19	Trinket Box, ash glazed — Porcelain	NFS
Peter Collis, Birkenhead		
20	Vase, green with brush decoration — Stoneware	280
Julia Colman, Northcote Point		
21	Bowl — Stoneware	55
22	Box — Stoneware	NFS
23	Bowl — Stoneware	45
24	Bowl — Stoneware	30
Doris M. Dutch, Waitakere		
25	"Patchwork" Standing Form — Stoneware	55

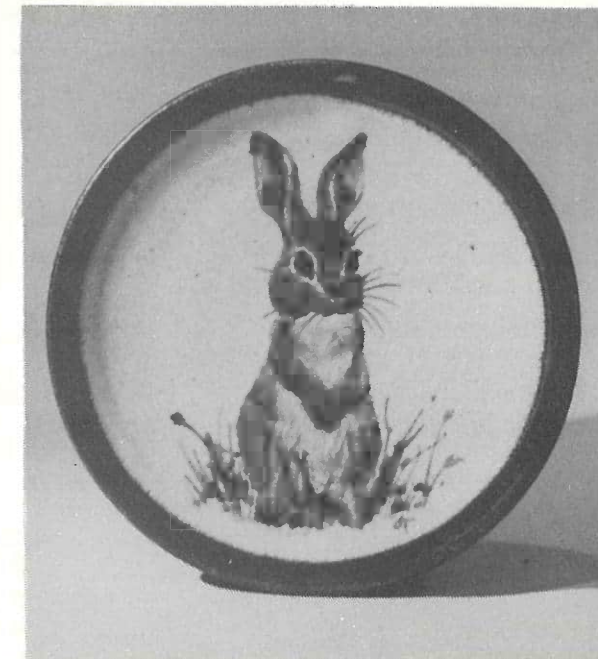
Ted Dutch, Te Atatu		
26	Small Wall Panel "Technician" — Porcelain	90
27	Signaller with Machine Background — Porcelain	200
28	King and Queen Wall Panel — Porcelain	360
29	Small Figure — Porcelain	NFS
Ian Firth, Warkworth		
30	Baroque Bowl — Stoneware	95
31	Baroque Bowl — Stoneware	NFS
Margaret Gallagher, Mairangi Bay		
32	Casserole — Stoneware	48
Campbell Hegan, Devonport		
33	Blossom Pot — Stoneware	120
34	Ovoid Vase — Stoneware	30
Barbara Hockenhull, Wellsford		
35	Water Dropper — Stoneware	20
36	Water Dropper — Stoneware	15
37	Water Dropper — Stoneware	12
Barry Hockenhull, Wellsford		
38	Tea Box — Stoneware	35
Scott Hockenhull, Wellsford		
39	Slab Plate — Stoneware	75
Michael Lucas, Devonport		
40	Red Bowl — Stoneware	150
41	Horse — Stoneware	160
Beverley Luxton, Howick		
42	Bowl — Porcelain	45
43	Trinket Box — Porcelain	32
John Mitchell, Northcote		
44	Slab-built Container — Stoneware	80
Renton Murray, Oratia		
45	Squared Pie Dish — Saltglazed Stoneware	38
46	Feeted Tipot — Saltglazed Stoneware	75
47	Cut Tipot — Saltglazed Stoneware	75
Chester Nealie, South Kaipara Heads		
48	Jar — Stoneware	420
49	Vase — Stoneware	120
50	Manuka Jar — Stoneware	35
John Parker, Oratia		
51	Blue bowl — Porcelain	60
52	Blue bottle — Porcelain	60
53	Blue bottle — Porcelain	50
54	Blue bottle — Porcelain	50



Roger Paul

Richard Parker, Kaeo		
55	Jar — Stoneware	75
56	Jar — Stoneware	75
Cecilia Parkinson, Glendowie		
57	Conical Form — Saggar fired Porcelain	35
58	Conical Form — Saggar fired Porcelain	35
59	Conical Form — Saggar fired Porcelain	30
60	Bottle, Carinated Form — Saggar fired Porcelain	25
Robin Paul, Birkenhead		
61	Cylinder — Porcelain	12
62	Pinched Bowl — Porcelain	10
Roger Paul, Birkenhead		
63	Propped Bottle — Porcelain enamels/lustre	150
64	Bottle — Porcelain enamels/lustre	50
65	Bottle — Porcelain enamels	30
Mike Pepper, Castor Bay		
66	Platter — Porcelain	30
67	Jar — Stoneware	20

Gillian Pragert, Oratia		
68	Pair of Winged Feet — Raku	120
Ray Rogers, Birkenhead		
69	Floor Pot — Pit Fired	475
70	Egg Form — Pit Fired	65
71	Egg Form — Pit Fired	120
72	Egg Form — Pit Fired	65
73	Sphere — Pit Fired	NFS
Wendy Ronald, Henderson		
74	Carved bowl — Porcelain	25
75	Carved bowl — Porcelain	20
76	Carved bowl — Porcelain	16
Rick Rudd, Whangaporoa		
77	Raku No. 558	175
78	Raku No. 559	375
79	Raku No. 560	175
Frank Sharpley, Papakura		
80	Wall Plate, Tiger Lily — Raku	40
Peter Shearer, Birkenhead		
81	Platter, Orchid Design — Stoneware	95
Heather Skeates, Albany		
82	Vase — Porcelain	38
83	Vase — Porcelain	40
Ian Smail, Albany		
84	Pouring Bowl — Saltglazed Stoneware	80
85	Jar — Saltglazed Stoneware	50
86	Storage Jar — Saltglazed Stoneware	50
Robyn Stewart, Whangarei		
87	"Moki" Burnished Pot	198
Peter Stitchbury, Manurewa		
88	Bottle Vase — Stoneware	300
89	Platter — Stoneware	145
90	Platter — Stoneware	145
Carol Swan, New Lynn		
91	Lustre bowl — Porcelain	30
Ces Thomas, Beachhaven		
92	Pacific Form — Stoneware	60
93	Pacific Form — Stoneware	50
94	Pacific Form — Stoneware	50
Jill Totty, Devonport		
95	Borage Charger — Stoneware	280
96	12 Good Rules — Stoneware	200
97	Meadow Mushrooms — Stoneware	150
98	Rabbit — Stoneware	60
99	Fairy — Porcelain	160



Jill Totty — Michael Lucas



Jill Totty — Michael Lucas

Sally Vinson, Devonport		
100	Majolica Bowl — Earthenware	45
101	Set of 3 Vases — Earthenware	65
102	Majolica Bowl — Earthenware	45

Joy Wheeler, Castor Bay		
103	Small squared bottle — Stoneware	NFS

Dianne White, Mt Albert		
104	Raku Bowl — Low fired Stoneware	55
105	Raku Bowl — Low fired Stoneware	55
106	Raku Bowl — Low fired Stoneware	55

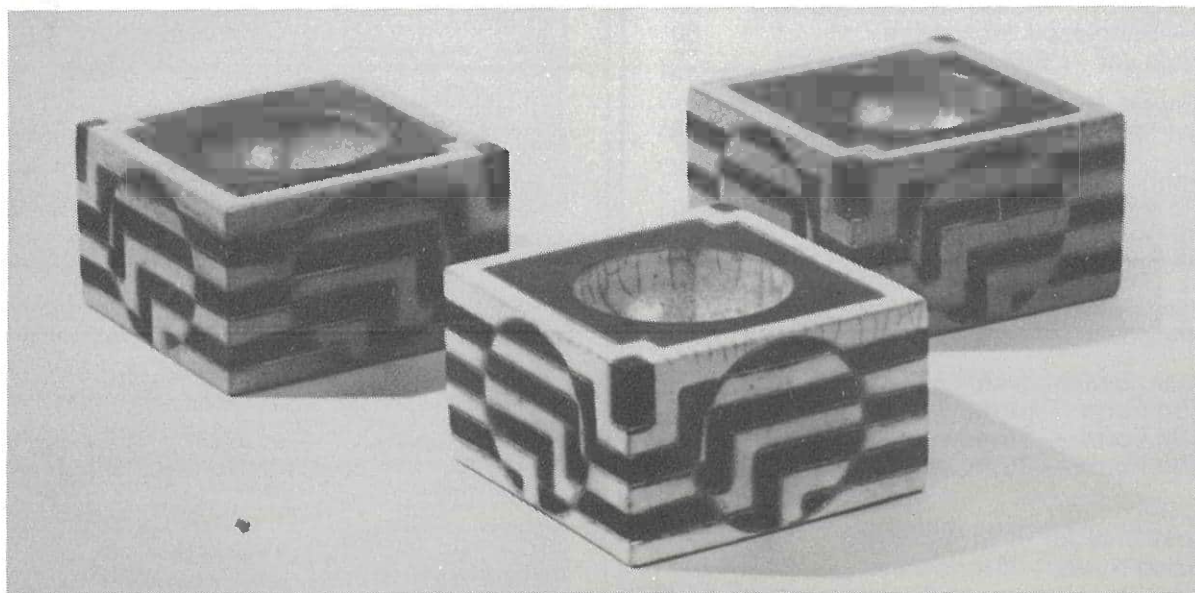
Howard Williams, Albany		
107	"Strata" Wall Panel — Earthenware	1000

Merilyn Wiseman, Albany		
108	Platter — Woodfired Stoneware	48
109	Platter — Woodfired Stoneware	60
110	Platter — Woodfired Stoneware	80

Robyn Wynyard, Castor Bay		
111	Bowl — Porcelain	10



Merilyn Wiseman



Dianne White

CANTERBURY REGION

Aina Apse		
112	Bottle	50
113	Vase	35
114	Bowl	50

Raewyn Atkinson		
115	Bowl — Stoneware	20
116	Bowl — Stoneware	20

Gita Berzins		
117	Erosion Form — Stoneware	120
118	Tree Form — Stoneware	120
119	Erosion Form — Stoneware	45
120	Erosion Form — Stoneware	45
121	Textured Form — Stoneware	40
122	Textured Form — Stoneware	40

David Brokenshire		
123	Autumn Flower — Porcelain	70
124	Snow Flower — Porcelain	70
125	Blood Sky — Porcelain	70
126	Winter Trails — Porcelain	70
127	Sea Surge — Porcelain	70

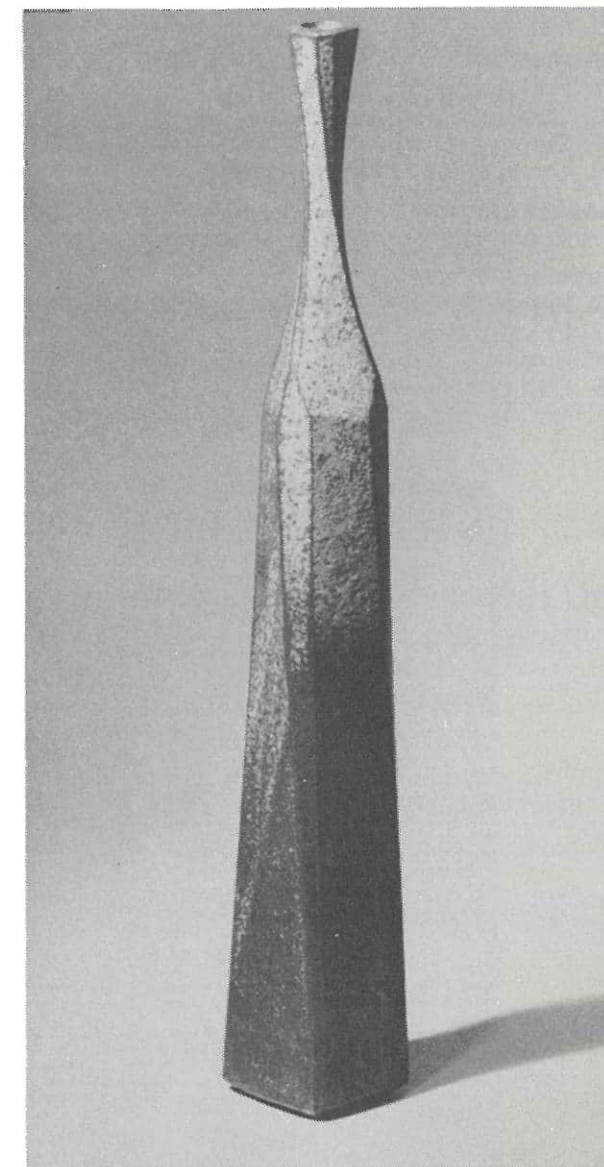
Sally Connolly		
128	Three small pots — Porcelain	45
129	Pot — Stoneware	30
130	Slab pot — Stoneware	50
131	Slab pot — Stoneware	35

Valerie Crighton		
132	Morning at Clifton Bay — Low fired Stoneware	30
133	Estuary & Sky — Low fired stoneware	80
134	Estuary & Sky — Low fired Stoneware	60

Ann Davie		
135	Plate — Stoneware	44

Frederika Ernsten		
136	Vase — Porcelain	45
137	Vase — Porcelain	30
138	Vase — Porcelain	35
139	Teapot — Stoneware	34
140	Teapot — Stoneware	34
141	Ring box — Stoneware	20

Madeline Findley		
142	Small patterned jar — Salt glazed Stoneware	20



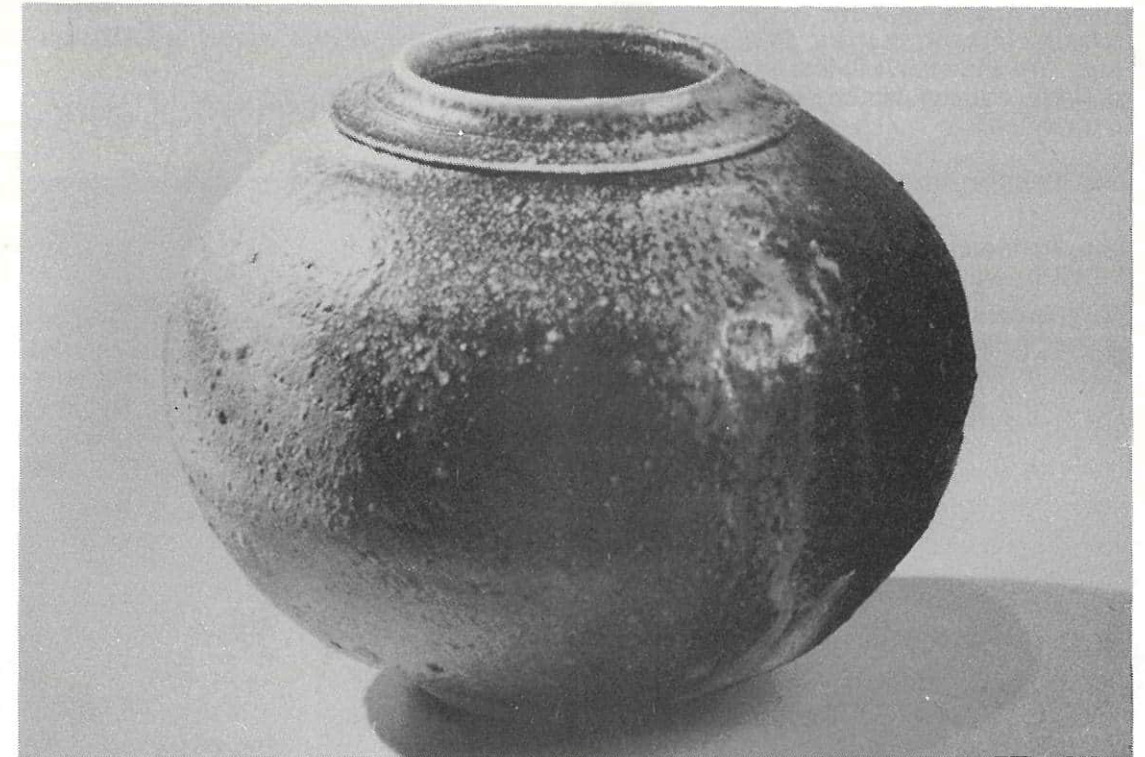
Aina Apse

Margaret Higgs		
143	Form — Stoneware	65
144	Form — Stoneware	55
145	Form — Stoneware	35
146	Pot — Stoneware	40
Rosemary Perry		
147	Red pot — Stoneware	60
148	Celadon Olive jar — Porcelain	45
149	Celadon bowl — Porcelain	35
150	Crackle glazed bowl — Porcelain	30
Christa Pettigrew		
151	Agate vase	30
Rosemary Thompson		
152	Pair of birds — Sawdust fired	25
153	Pair of birds — Sawdust fired	25
154	Bird — Sawdust fired	30
155	Bird — Sawdust fired	30

Rex Valentine		
156	Vase — Stoneware	45
157	Vase — Stoneware	35
158	Vase — Stoneware	20
159	Vase — Stoneware	25
160	Teapot — Stoneware	30
161	Bowl — Stoneware	35
Robert Wagoner		
162	Blush — Bisque porcelair	40
Denise Welsford		
163	Jug — Stoneware	40
164	Jug — Stoneware	35
165	Jug — Stoneware	32



David Brokenshire



Estelle Martin

HAWKES BAY REGION

Selectors: Jean Hastedt and John Fuller

Jan Bell		
166	Jug — Salt fired	120
167	Jar — Salt fired	120
168	Jar — Salt fired	90
Jeff Bell		
169	Rock Pot — Salt fired	20
170	Rock Pot — Salt fired	25
Chloe King		
171	Salt fired Vessel	200
172	Covered jar — Stoneware	85
173	Covered jar — Stoneware	85
Lien Levingston		
174	Tea for Two	28
Bruce Martin		
175	Slab bottle — Anagama fired	50
176	Branch pot — Anagama fired	250
177	Large Jar — Anagama fired	300
Estelle Martin		
178	Two dishes — Anagama fired	50
179	Jar — Anagama fired	75
180	Bottle — Anagama fired	90
181	Pot — Anagama fired	250
Helen Mason		
182	Stoneware on the flow	60
183	Stoneware on the flow	40
184	Stoneware on the flow	50
John Miller		
185	Large vase Shane gold	120
186	Large vase	190
Denis Rowe		
187	Soup Pot and Ladle	45
Marc Vigor Brown		
188	Platter	35

MANAWATU REGION

Selectors: Jean Hastedt, potter, Paraparaumu.
John Ford, Woodcarver, Palmerston North.
"the pots were chosen for their ceramic and aesthetic qualities."

- George Broad, Palmerston North**
189 Teapot — Stoneware — 40
- Helen Hodren, Palmerston North**
190 Set of 2 pitfired pots — Porcelain 40
- Evelyn Kelly, Wanganui**
191 Crystalline bottle 48
192 Set of 2 pitfired pots NFS



George Kojis



Peter Gibbs Nelson

- George Kojis, Palmerston North**
193 Container form — Stoneware 200
194 Container form — Stoneware 200
195 Container form — Stoneware 240
196 Matched Container scapes — Stoneware 220
- Audrey Lisette, Levin**
197 Sea form 1 — Earthenware 88
- Peter Masters, Wanganui**
198 Snarled tap root growth 375
199 Twisted root growth 350
- Anne Powell, Hunterville**
200 Pink tree carved bowl 40
- Katherine Sanderson, Palmerston North**
201 Platter — Raku 50
202 Platter — Raku 40

NELSON REGION

Selectors: Peter Gibbs, Royce McGlashen, Ross Richards

- John Crawford, Westport**
203 Group of 3 75
204 Pair 55
205 Pot 30
206 Dish 19
207 Group of 3 150

- Carol Crombie, Wakapuaka**
208 Vase — Porcelain 10

- Vic Evans, Wakefield**
209 Small sphere (landscape) — Raku 15
210 Small sphere (landscape) — Raku 15
211 Medium sphere (landscape) — Raku 55
212 Large sphere (landscape) — Raku 70

- Peter Gibbs, Brightwater**
213 Teapot 32
214 Jar 28
215 Cheese Dish 35
216 Cylinder 32
217 Pair of Jars 48
218 Pair of Jars 48

- David Griffith, Tahunanui**
219 Bottle — Low fired 35
220 Lidded box — Low fired 30
221 Lidded Box — Low fired 30
222 Bowl — Low fired 30
223 Bowl — Low fired 30
224 Small plate — Low fired 22

- Lynne Griffith, Tahunanui**
225 Blue Buttoned-up Cylinder 55
226 Green Buttoned-up Cylinder 45

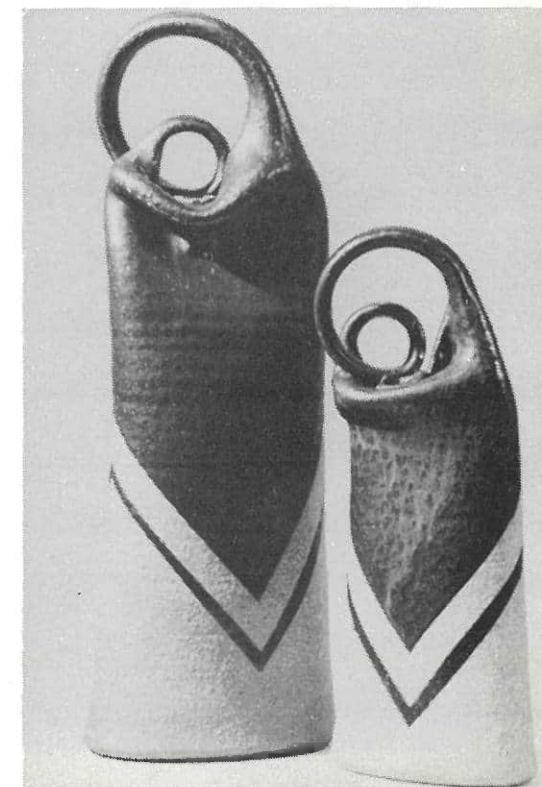
- Sue MacLeod, Nelson**
227 Hearts (large) — Handbuilt Earthenware 52
228 Hearts (small) — Handbuilt Earthenware 25
229 Kisses (small) — Handbuilt Earthenware 25
230 Kisses (white) — Handbuilt Earthenware 25
231 Pips 25
232 Dragonflies 38

- John Madden, Whangamo**
233 Cut & Paddled Pot 75
234 Incised Ash Pot 75
235 Finger wipe Pot 75
236 Incised Pot 75
237 Facetted Bottle 75

- Royce McGlashen, Brightwater**
238 Small decorated Jar 28
239 Small decorated Jar 28
240 Porcelain Plate 60
241 Wall Plate 60
242 Wall Plate 100
243 Storage Jar Price on Application

- Ross Richards, Wakapuaka**
244 Bottle 100
245 Wine Set — Porcelain 80
246 Vase 45
247 Vase 25
248 Vase 48
249 Bottle 35

*Price on Application



John Crawford

OTAGO REGION

Selector: Beryl Jowett, Potter, Otago

David Atkinson, Weston

250 Pair of Storage Jars 50

Nicole Kolig, Dunedin

251 Crackle bowl 49

Danny Moorwood, Dunedin

252 Plate 45

253 Bottle 35

Gillian Pope, Dunedin

254 Blossom jar 65

255 Japonica ball 40

256 Porcelain print "Rangitoto" 25

257 Porcelain print "Plum blossom" 25

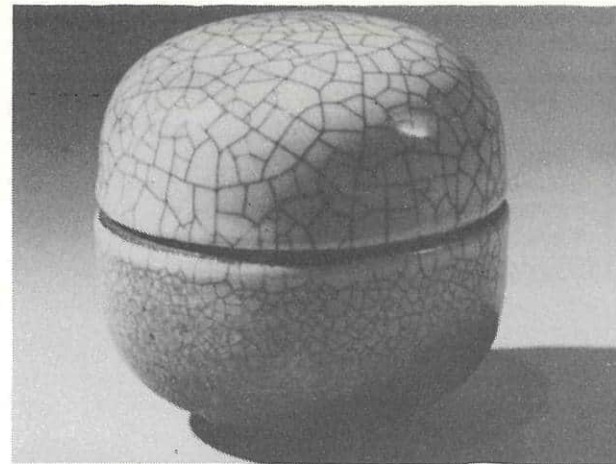
Mike Searle, Mosgiel

258 Loose plate 52

259 Trinket pot 28

Airini Taylor, Dunedin

260 Lugged bottle 28



Mike Searle

SOUTHLAND REGION

Selectors: Olwyn Dykes, Francis Fredric, Alan Young.

Ann Bain, Invercargill

261 Crackle Pot — Woodfired 50

262 Lidded Jar — Woodfired 35

Sue Clifford, Wyndham

263 Receptor — Solid Porcelain & Metals 120

264 Diatom — Solid Porcelain & Amethyst 120

265 Receptor — Solid Porcelain 60

Olwyn Dykes, Invercargill

266 Plate — Woodfired Stoneware 40

267 Plate — Woodfired Stoneware 40

268 Plate — Woodfired Stoneware 40

269 Teapot — Woodfired Stoneware 35

Murray Fox, Invercargill

270 Crackle Pot — Porcelain 45

27 Double headed pot — Porcelain 25

Francis Fredric, Invercargill

272 Teapot — Woodfired Stoneware 38

273 Box — Woodfired Stoneware 20

274 Plate — Woodfired Stoneware 48

Janette Goomes, Invercargill

275 Bowl — Earthenware 28

N. Roughan, Gore

276 Lidded Pot — Earthenware 25

Alan Young, Invercargill

277 Bottle 35

278 Pot 35

TARANAKI REGION

Selector: George Kojis

Nick Brandon

279 Red Bottle

280 Red necked bottle — cylindrical

281 White necked bottle — cylindrical

Jane Capon

282 Bottle — chun — Porcelain 35

283 Bowl — chun — Porcelain 45

284 Trinket box — chun — Porcelain 35

Fran Conquest

285 Transient 1 — Stoneware 200

286 Transient 2 — Stoneware 150

Roger King

287 Cone 1 — Woodfired 60

288 Cone 2 — Woodfired 60

289 Cone 3 — Woodfired 120

Carolynne Mannins

290 Wall tile 1 — Woodfired 35

291 Wall tile 2 — Woodfired 35

292 Bottle 65

Bev Rea

293 Foyer Pot — Stoneware 300

Rusty Ritchie

294 Storage Jar — shino 75

295 Teapot — shino 40

Robyn Sinclair

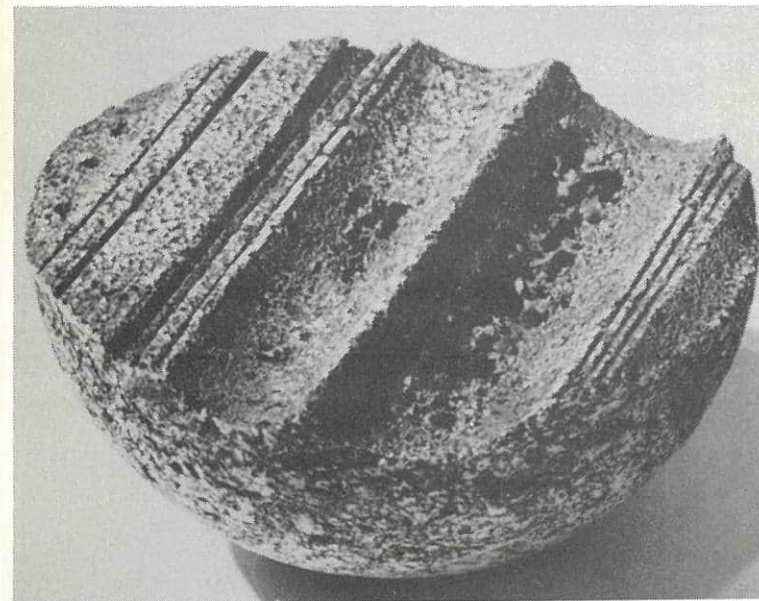
296 Slab bottle — Stoneware 60

Joyce Young

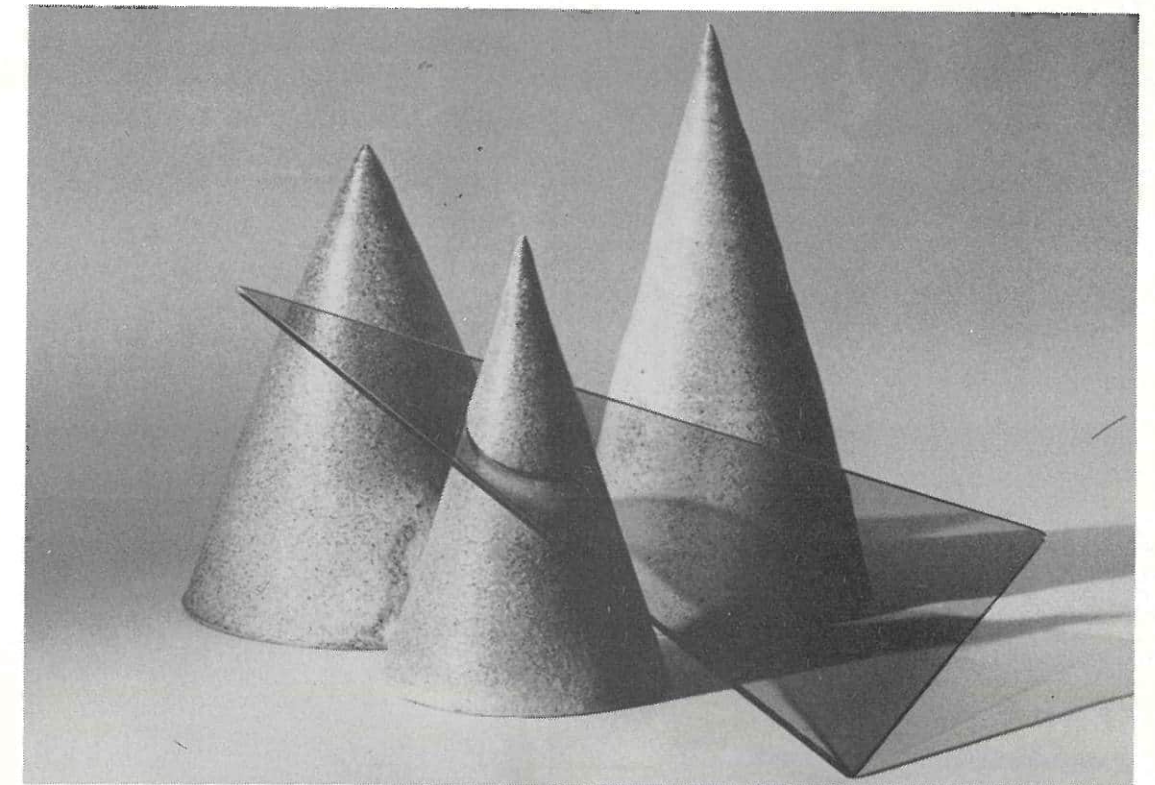
297 Rock pot 1 — Stoneware 125

298 Rock pot 2 50

299 Rock pot 3 — Stoneware/Porcelain 40



Sue Clifford



Roger King

WAIKATO REGION

Selectors: Ken Gorbey, Director, Waikato Art Museum. Don Thornley, Tutor, Waikato Tech. Institute. Melis van der Sluis, Potter.

Suzanne Catley, Hamilton

300 Raku tile trio Africa series — Raku	45
301 Raku Kariba pair — Raku	40
302 Zimbabwe tile trio	45
303 Zimbabwe tile pair	45

Eve Gardiner, Hamilton

304 Vase — Pit fired	22
----------------------	----

Tricia Hansen, Morrinsville

305 Agate Box with Ringed lid	25
306 Inlay Agate Bowl — Porcelain	15
307 Inlay Agate Bowl — Porcelain	18

Lynda Harris, Hamilton

308 Vase	25
309 Vase	20
310 Vase	20

Eric Harrison, Hamilton

311 Wine Set (7 pieces & drip cup)	125
312 Bottle	60
313 Pilgrim bottle	36

Gill Jennings, Morrinsville

314 Sgraffito Trinket box — Porcelain	25
315 Incised Trinket box — Porcelain	25
316 Sgraffito Trinket box — Porcelain	25

Sue Judd, Hamilton

317 Fumed bottle	85
318 Large fumed bottle	125
319 Fumed bottle	125
320 Small bottle	38

Sue Knowles, Hamilton

321 Nebula 1 — Fumed Porcelain	35
322 Galaxy 1 — Fumed Porcelain	35
323 Solar 1 — Fumed Porcelain	35

Ann McCartney, Hamilton

324 Bowl — Stoneware	55
325 Fumed pot — Earthenware	65

Linda Nyffeler, Tokoroa

326 Crock — Woodfired	135
327 Plate — Stoneware	24

Fay Purves, Tokoroa

328 Vase — Porcelain	25
329 Vase — Porcelain	30

Gail Stables, Tokoroa

330 Teapot	25
331 Teapot	25

Janet Stanley, Tauranga

332 Grass pot	10
333 Grass pot	9

Annette Stephenson, Coromandel

334 Teapot	23
------------	----

Melis Van der Sluis, Hamilton

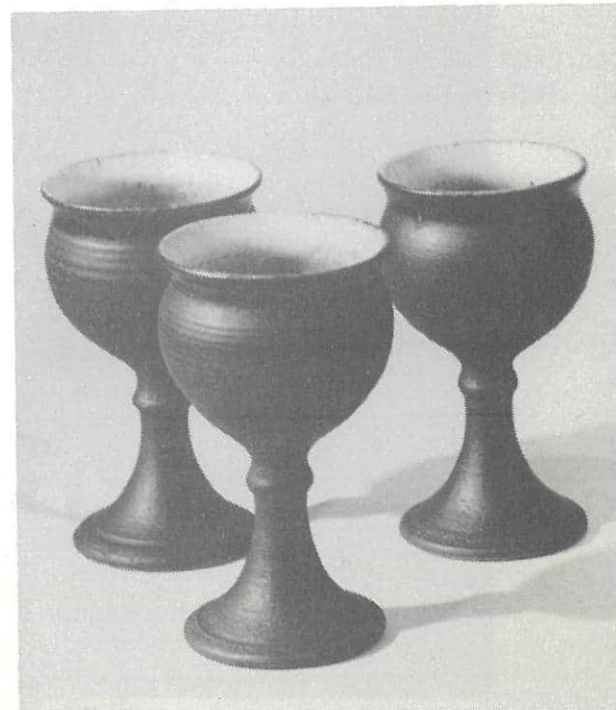
335 Wall Sculpture — Porcelain	95
336 Wall Sculpture — Porcelain	80
337 Sculptural Piece — Porcelain	95
338 Wall Sculpture — Porcelain	75

Phillip Wiles, Hamilton

339 Storage Jar	24
-----------------	----

Elizabeth Woodfield, Hamilton

340 Bottle	25
------------	----



Eric Harrison

WELLINGTON REGION**Jill Bagnall**

341 Set of two beakers	35
------------------------	----

Anneke Borren

342 Branch pot — Stoneware/overglaze decoration	120
---	-----

343 Branch pot — Stoneware/overglaze decoration	100
---	-----

344 Lidded round pot — Stoneware/overglaze decoration	68
---	----

345 Tall bowl — Stoneware/overglaze decoration	52
--	----

Flora Christeller

346 Teapot — Salt glaze	35
-------------------------	----

347 Plate — Salt glaze	75
------------------------	----

348 Lidded jar — Salt glaze	30
-----------------------------	----

Chris Goslin

349 Teapot — Stoneware	NFS
------------------------	-----

350 Jar — Stoneware	20
---------------------	----

Jean Hastedt

351 Set of 3 boxes — Porcelain	110
--------------------------------	-----

352 Teapot silver bound handles — Porcelain	60
---	----

353 Box — Porcelain	45
---------------------	----

354 Box — Porcelain	35
---------------------	----

Mary Lowrey-Smith

355 Teapot — Saggar fired Stoneware	40
-------------------------------------	----

Jean McKinnon

356 Pinch & carved bowl — Porcelain	55
-------------------------------------	----

357 Pinch & carved bowl — Porcelain	45
-------------------------------------	----

358 Pinch & carved bowl — Porcelain	55
-------------------------------------	----

359 Flow form pair — Porcelain	70
--------------------------------	----

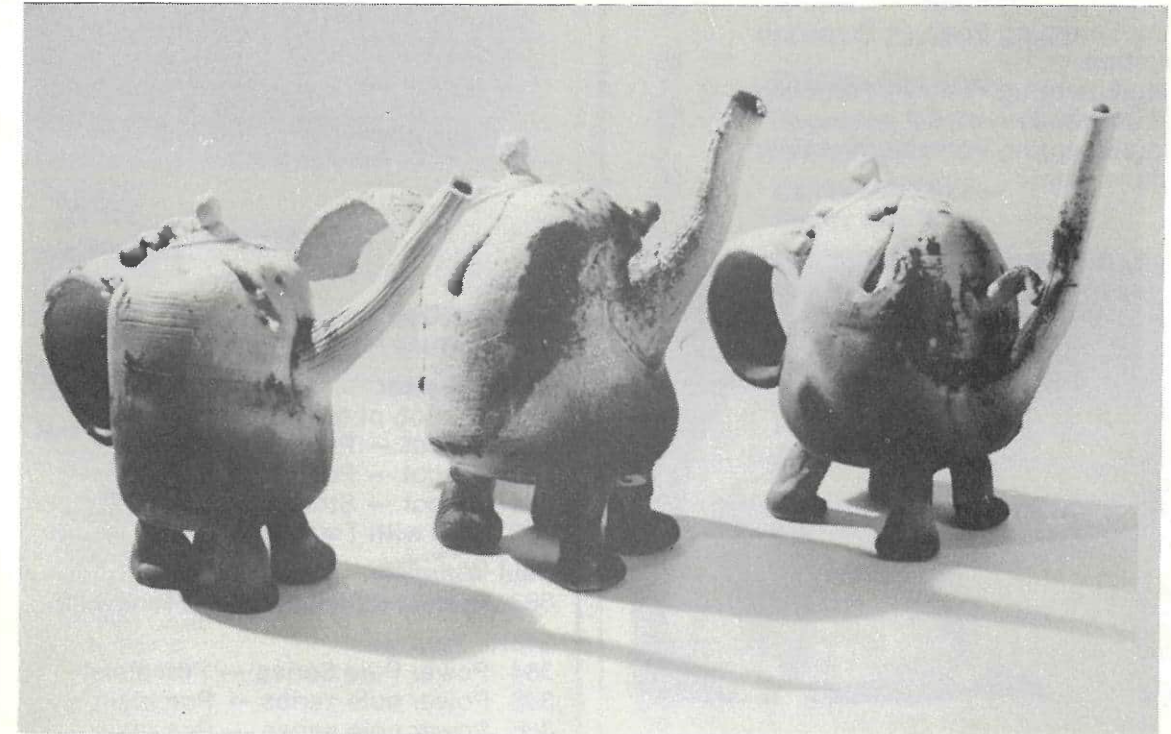
Wendy Masters

360 Yellow Crocus Jar — Porcelain	45
-----------------------------------	----

361 Freesia Jar — Porcelain	35
-----------------------------	----

362 Blue Crocus Box — Porcelain	35
---------------------------------	----

363 Pair Japonica boxes — Porcelain	48
-------------------------------------	----



Penny Walker

Patti Meads	
364 Plate gold & platinum lustres — Porcelain	145
365 Pot Gold & Platinum lustres — Porcelain	85
366 Oval box gold & platinum lustres — Porcelain	80
367 Two boxes gold & platinum lustres — Porcelain	140

Julie Palmer	
368 Teapot — Stoneware	30

Debbie Pointon	
369 Butterfly Dreams	200
370 Butterfly Teapot	50
371 Butterfly bowl	60
372 Butterfly bowl	55

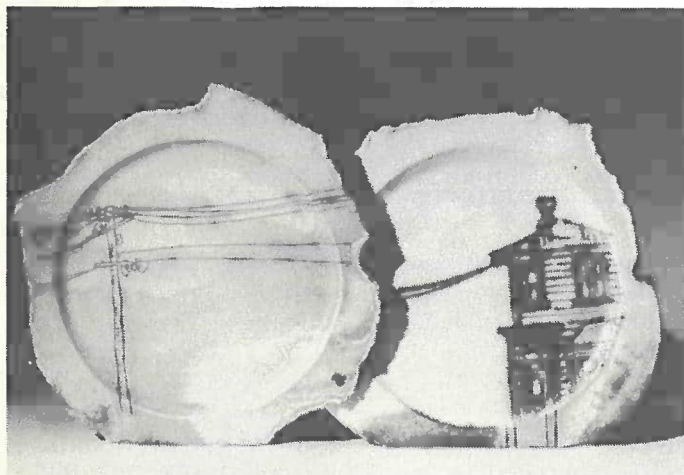
Jenny Shearer	
373 Tea Set — 6 cups & saucers, milk & sugar	120

Julia van Helden	
374 Eroding/Emerging Form — Porcelain	50
375 Eroding/Emerging Form — Porcelain & lustres	65
376 Eroding/Emerging Form — Porcelain & china paint	65
377 Eroding/Emerging Form — Porcelain & china paint	50



Anneke Borren

Arie van Dyk	
378 Terrace Pot — Stoneware	260
Penny Walker	
A small mob of teapots	
379 Teapot — Porcelain	48
380 Teapot — Porcelain	48
381 Teapot — Stoneware	42
382 Dish with Trap Door	30
Paul Winspear	
383 Gum leaf blue plate — Stoneware	95
Gloria Young	
384 Power Pole Series — Porcelain	28
385 Power pole series — Porcelain	30
386 Power pole series — Porcelain	30
387 Power pole series — Porcelain	35



Gloria Young

New Zealand Society of Potters

President
Sally Vinson

Immediate Past President
Leo King

Vice Presidents
Jean Hastedt
Chris Cockell

Secretary
Russell Topliss

Delegates
Chris Cockell — Auckland
Jan Bell — Hawkes Bay
Jane Capon — Taranaki
Sally Connelly — Christchurch
Jean Hastedt — Wellington
Bob Heatherbell — Nelson
Gillian Pope — Otago
Katherine Sanderson — Manawatu
Melis van der Sluis — Waikato
Alan Young — Southland

Auckland Studio Potters Committee

President
Jill Totty

Vice President
Moyra Elliott

Secretary
Mollie Maxted

Treasurer
Wallace Luxton

Members
Alan Kestle
Owen Cobb
Tui Morse
Robin Paul
Wendy Ronald
Julia Colman
Nancy Wilson
Pam Donnelly
Michael Lucas
John Parker
Penny Evans

Acknowledgements

Fletcher Brownbuilt
Air New Zealand
Pettits Nurseries
Ceramics '82 Co-ordinator
John Parker
Exhibition Officer
Penny Evans
Exhibition & Catalogue Design
Julia Colman
Lighting
Sam Winterbottom
Photographs
Howard Williams
Ces Thomas
Publicity
Carol Wall
Printing
Imedia Print Ltd
Catering
Lynn Pieteron

