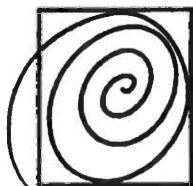
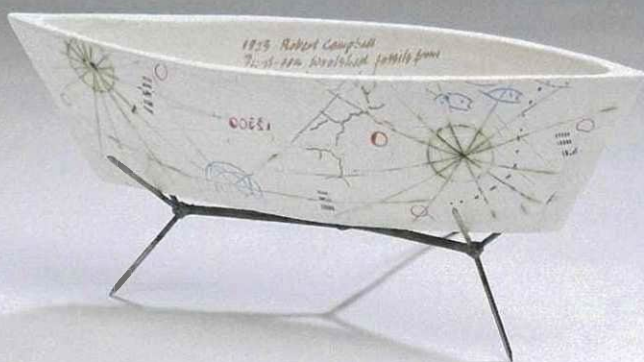


Celebrating Ceramics

54th National Exhibition of NZ Potters' Inc

23 March - 12 May 2013



NZ POTTERS

NZ Potters Inc.

54th National Exhibition

23 March – 12 May 2013

Expressions Arts and Entertainment Centre

836 Fergusson Drive, Upper Hutt

Awards:

Excellence Award- \$2000

Sponsored by
Primo Clays, Palmerston North

Merit Award- \$500

Sponsored by
South St Gallery, Nelson

Highly Commended Awards

Sponsored by
Wellclay

People's Choice Award

Proudly sponsored by
Expressions Arts and Entertainment Centre

Votes will be tallied and the winning artist will have the opportunity to exhibit as an Artist in Feature at Expressions in 2014.

Welcome

Welcome to *Celebrating Ceramics*, the 54th National Exhibition of New Zealand Potters.

The National Exhibition is the highlight of our society's calendar and each year it opens in a different part of the country. Last year in Whangamata, before that in Auckland and in the past in centres as far apart as Invercargill and Whangarei.

This is made possible by the enthusiasm and dedication of our members in different regions, and this year we are indebted to Sue Scobie, Aimée McLeod and their team for bringing the National Exhibition, for the first time, to Upper Hutt.

Achieving this splendid exhibition has been made possible by the exhibition's sponsors, Primo Clays, the South Street Gallery and our hosts here tonight, the Expressions Art and Entertainment Centre and its very helpful staff.

One more ingredient is essential for a really successful exhibition. While potters get great pleasure from making a fine piece, from having it selected for a national exhibition and from seeing it displayed along side the work of others whom they respect, that pleasure is heightened when someone admires their work sufficiently to buy it. Now it is your turn.

Jim Pollard

President

NZ Potters Inc.

A Word From the Selector

I always preface any assessment of artists' work by saying the selection is as objective as I can be, however we are all a product of our education and experiences and by that our selection may be subjective.

The images of the work presented indicated a very high standard and as I am not familiar with many of the presenting artists it was a pleasure to look at the images with unbiased eyes.

I was impressed by the variety of work presented and much of the originality both in concept and form. When the only criteria is excellence it allows the selector wide scope and I enjoyed looking for excellence in the work chosen for this 54th New Zealand Potters National Exhibition.

Anita McIntyre

President, Strathnairn Arts Association

www.strathnairn.com.au

Canberra, Australia

About the Selector

Anita McIntyre

Professional Development

In my position as Lecturer in Ceramics Workshop, I have been involved in course structures, course changes, dealing with School of Art academic and funding matters. My experience with indigenous communities throughout Australia has been considerable. I retired from the Ceramics Workshop, Australia National University in 2005 after 33 years teaching at that institution.

I was a founding member of Canberra Potters Society and Strathnairn Ceramics Association. I have judged many regional ceramic and art competitions. I am currently serving on the Art Advisory Board at CMAG (Canberra Museums and Galleries) and am President and Chair of the Board of Strathnairn Arts.

I am a practising ceramic artist with works collected in both public and private collections and hold regular solo shows at Beaver Galleries, ACT and Framed Gallery, Darwin. Publications about my work include essays, catalogues and books on ceramics. I have traveled and taught extensively throughout Australia, Canada and China and have been invited and selected for many national and international exhibitions.

I am currently in the exhibition "MARKING PLACE" at CMAG a profile exhibition that opens the Centenary Year for Canberra at CMAG.

Artist Statement

The Australian landscape in a number of manifestations – the local Brindabella Ranges, the Central Desert and the Kimberley’s – has informed my practice for some thirty years. It constitutes the continuing narrative of journey, place and time that is the essence of my art. Although specific place(s) may be alluded to, my Australian landscape is a generalised one. Peculiarities of (individual) place are visualised through an abstract language that imbues universal rather than particular significance.

Observation and memory, combined with historical and topographical references, provide the conceptual and perceptual material that allows me to visually express my own very personal relationship with the land. That relationship is always underpinned by a quiet acknowledgement of the deeply spiritual connection between the land and its indigenous owners.

My recent work looks at places which have a particular resonance to my family history. A sixth-generation Australian, I have always been intensely interested and involved in the stories of my colonial ancestors. Their “places” and interactions with indigenous land-use form the thematic base of my new work. The pictorial starting-points are 19th-Century Parish maps, visual expressions of ownership and regulation. These provide a base for layered narratives of emigration, settlement and family histories which speak both of the new experiences of the recently arrived and their full embracing of their new home and the ancient stories of this land’s original inhabitants.



Graham Ambrose

1 *Ark* \$3450
slab construction



Pamella Annsouth

2 *Day Dreamer* \$360
paperclay
3 *Flora's Daydream* \$380
earthenware



Erika Auperle

4 *Reformed 1* \$180
porcelain thrown and altered
5 *Reformed 2* \$180
porcelain thrown and altered
6 *Reformed 3* \$180
porcelain thrown and altered

Jill Bagnall

7 *A bowl for Jung* \$140

porcelain, celadon glaze inside

8 *Two celadon bowls, square feet* \$160

porcelain, celadon glaze

9 *Salad Bowl* \$190

porcelain, celadon



Roger Bagshaw

10 *Black Teapot* \$149

stoneware

11 *Blue Teapot* \$149

stoneware

12 *Red Teapot* \$149

stoneware



Greg Barron

13 *Square vase with iron crackle* \$850

stoneware with slip

14 *Fertility Vessel* \$850

stoneware

15 *Ovoid Form with incised decoration* \$950

porcelain, celadon glaze



Anneke Borren

16 *Moonlight-on-Water Vase* \$550

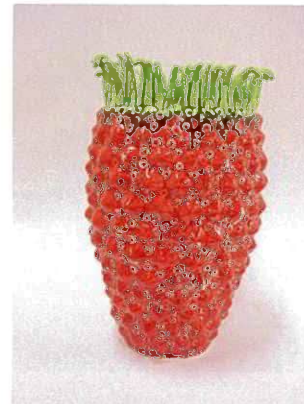
blue on white, high fired stoneware

17 *Moonlight-on-Water Vase* \$550

blue on white, high fired stoneware

18 *Moonlight-on-Water Vase* \$550

blue on white, high fired stoneware



Maria Brockhill

19 *Berry pot with spiky top* \$340

white clay, multi-fired

20 *Spiky jar with lid* 350

white clay, multi-fired



Linda Bruce

21 *Rainbows 1* \$750

raku clays, slips, oxides

Nicola Dench

22 *As the water laps my toes* \$420

pinched porcelain, stoneware, mirror

23 *Serendipity 1* \$85

pinched porcelain

24 *Serendipity 2* \$80

pinched porcelain



Suzy Dünser

25 *Teapot* \$200

wood- and soda- fired stoneware

26 *Jug* \$150

wood- and soda- fired stoneware

27 *Bucket* \$100

wood- and soda- fired stoneware



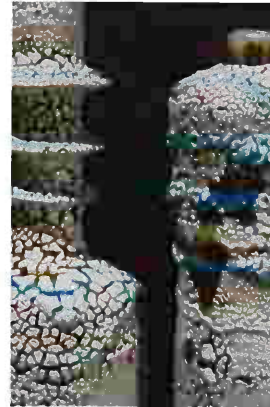
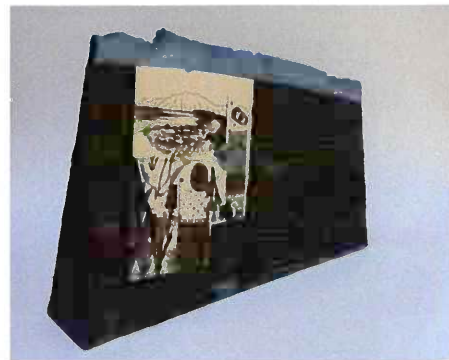
Penny Ericson

28 *Marine Environment* \$550

viscosity print, coloured clays

29 *Ecklonia Radiata (seaweed species)* \$550

viscosity print, coloured clays



Liz Fea

30 *Thaw* \$675

earthenware, mid-fire

31 *Fields* \$375

earthenware, mid-fire

Kirsty Gardiner

32 *Inkels from the Ancient World* \$380

mid-fire porcelain, lustres, decals

Murray Garner

33 *Bowl, layered glaze* \$295

stoneware

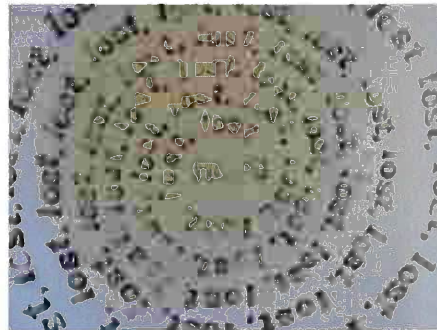
Neil Grant

- 34 *Bottle* \$430
stoneware
- 35 *Bowl* \$210
stoneware



Mia Hamilton

- 36 *Hope* \$400
earthenware



Kim Henderson

- 37 *Tales from the Deep* \$1435
paperclay



Nicole Kolig

- 38 *Jade Light Catcher-Shadow Player* \$1800
pure high fire glaze
- 39 *Blue Light Catcher-Shadow Player* \$1300
pure high fire glaze
- 40 *Red Light Catcher-Shadow Player* \$1000
pure high fire glaze



Heather Macdonald

- 41 *Double skinned pierced bowl 2* \$480
stoneware, hand-built
- 42 *Double skinned pierced bowl 3* \$480
stoneware, hand-built



Royce McGlashen

- 43 *High Country 1* \$150
- 44 *High Country 2* \$200
- 45 *High Country 3* \$110



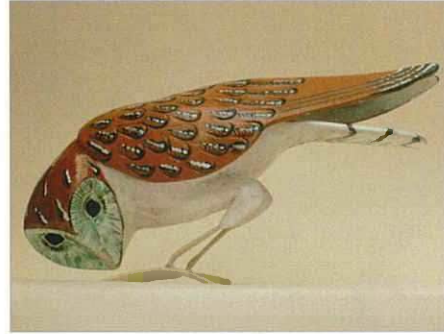
Jo McLean

46 *Crouching Barn Owl* \$460

ceramic and wire

47 *Fantail* \$85

ceramic and wire



Aimée McLeod

48 *We came out from the deep* \$110

stoneware, multiple-fired

49 *That's why we are here* \$120

earthenware, sigillata, lithium glaze



Gaeleen Morley

50 *Three Little Houses* \$395

wood-fired stoneware



Kiya Nancarrow

51 *High Hope* \$2200

thrown and altered stoneware



Rebecca Neal

52 *Two spout watering can #3* \$449

mixed clay coils, slips, underglazes, oxide washes



Ann O'Sullivan

53 *Three bottles* \$280

porcelain, salt-fired

54 *Two bottles* \$200

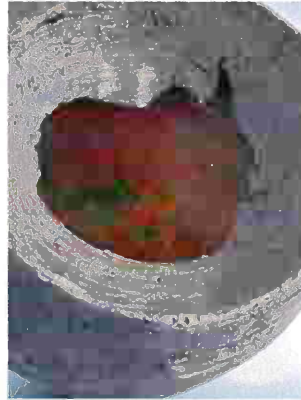
porcelain, wood/soda-fired

55 *Bowl* \$480

porcelain, wood/soda-fired

Diane Parker

56 *Drum* \$260
earthenware



Jan Priestley

57 *Yellow Beehive* \$2250
paperclay

58 *Weathered beehive* \$2500
paperclay

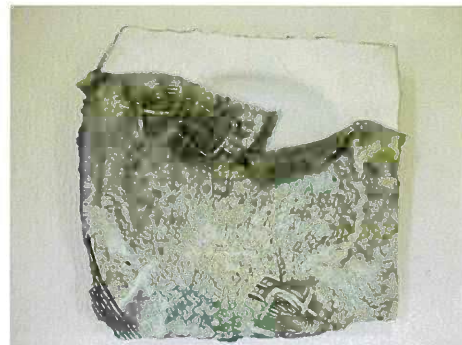
59 *Blue Beehive* \$2000
paperclay



Lesley Ranson

60 *Ancient Earth/Sky* \$170
-wall hanging
paperclay

61 *Ancient Earth/Sky* \$170
-shield
paperclay



Nicola Redvers-Newton

62 *Leaves from the* \$165
Punga Forest

thrown clay, slips,
underglazes, glaze

63 *Wellington Southerly* \$165
(Hataitai)

thrown clay, slips,
underglazes, glaze

64 *Tui and Kowhai* \$195

thrown clay, slips,
underglazes, glaze

Dianne Register-Stout

65 *Mad Hatter* \$1100

BRT, oxides, hand-built

66 *Dormouse* \$350

BRT, oxides, hand-built

67 *Tea 4 Two* \$280

stoneware, black underglaze,
slab-built

Elena Renker

68 *Two Shino glazed* \$150
tea bowls

stoneware

69 *Three Shino glazed* \$210
bowls

stoneware

70 *Shino glazed jar* \$120

stoneware

Michelle Retimana

71 *Nikau Palm #3* \$2850

coiled clay, carved, slips, oxides

72 *Pot #1* \$250

various clays, hand built

73 *Pot #2* \$250

various clays, hand built



Rick Rudd

76 *Tea pot* \$595

earthenware

77 *Tea pot* \$525

earthenware

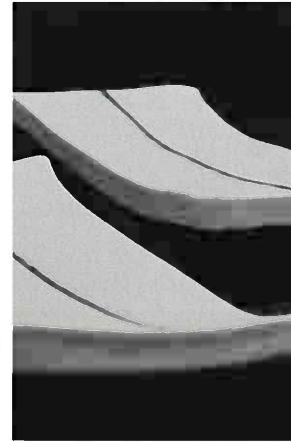
78 *Tea pot* \$495

earthenware

Carol Robinson

74 *Apartment Building #3* \$230

stoneware paper clay, glaze



Margaret Ryley

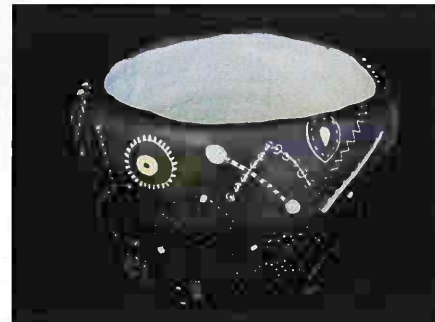
79 *Line* \$400

porcelain

John Roy

75 *Blue* \$1280

earthenware, hand built



Sara Scott

80 *Mother's Dress* \$850

photocopy on mid-fire earthenware, ceramic pencils, beads

81 *Lucienne's Pieces* \$1000

coloured slips on white earthenware, sgraffito

82 *The Pollack Vase* \$850

terracotta, coloured slips

Trish Seddon

83 *Terra pods 2*
earthenware pit-fired

\$450



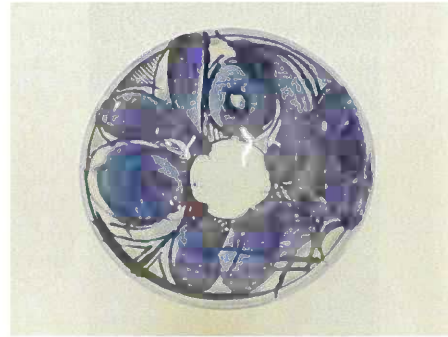
Jenny Shearer

84 *Kondo Salad Bowl,*
porcelain

\$175

85 *Kondo Salad Bowl,*
porcelain

\$175



Barbara Skelton

86 *Two stacking bowls*
porcelain

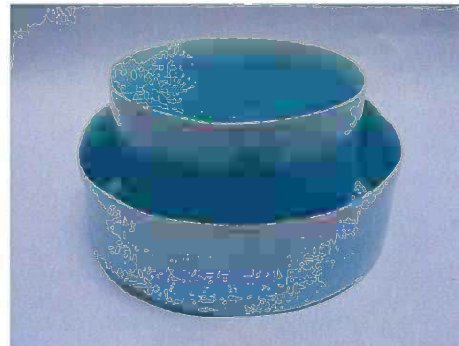
\$390

87 *Serving dish*
porcelain

\$195

88 *Container*
porcelain

\$195



Janet Smith

89 *Tears*
stoneware, wood-fired

\$400



Margaret Sumich

90 *Tea bowl*
wood-fired, soda/salt

\$60

Jenni Taris

91 *Phoenix Warriors*
wood-fired stoneware

\$400



Jenny Turnbull

92 Blue celadon tea set \$330
porcelain reduction fired



Teresa Watson

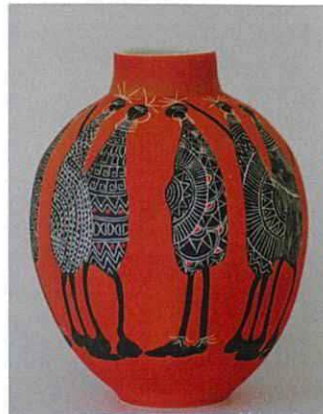
93 Vessels of Light \$550
thrown earthenware



Marilyn Wheeler

94 African Jar \$285
earthenware

95 African Pot \$185
earthenware



Helen Yau

96 Frolicking \$500

metal wire, paperclay slips

97 High definition of Blue \$450

porcelain, laminated patterns



DeAnne Lawford-Smith

98 Jade Dreaming \$350

stoneware, oxides

NZ Potters 54th National Exhibition 2013
"Celebrating Ceramics"
Awards

Excellence- sponsored by Primo Clays
Kim Henderson, Christchurch

Merit –sponsored by South Street Gallery
Penny Ericson, Waiheke

Judge's commendation-sponsored by
Wellclay

Greg Barron, Whangarei
Graham Ambrose, Auckland
Suzy Dunser, Auckland,
Nicole Kolig, Dunedin
Ann O'Sullivan, Auckland

A bit of history

The very first National Pottery Exhibition was held in Dunedin in 1957.

The next one, in Wellington in 1958, laid the foundation for the future.

The New Zealand Potter magazine was started as a newsletter to get details to potters and as a means to raise funds. It was at the organising core of the next six exhibitions. The need for a larger society arose, so the NZ Society of Potters was born, had its first AGM in 1963, and became an incorporated society in 1965. It has organised the "National" Exhibition annually ever since, rotating around the country, missing only two years.

"Celebrating Ceramics" in 2013 is the 54th.

The annual National Exhibitions set a standard for NZ ceramic artists. They are open only to members of the group, which changed its name from NZ Society of Potters, to NZ Potters Inc in 2006. It is a yearly event for members to aim at making their mark in. Selected by a ceramic artist of international repute, it always showcases the best and widest range of current ceramic work done around the country.

NZPotters represents the interest of potters on national issues and maintains a comprehensive database of potters and pottery groups throughout New Zealand. In this context "potter" includes any person working with and firing clay.

NZPotters publishes a magazine *Ceramics Quarterly* and has a comprehensive website www.nzpotters.com where members can have their own pages.

Acknowledgements

The organisers of the 54th National Exhibition would like to thank the following organisations and individuals for their work and support, without which this exhibition would not have been possible.

Sponsors

NZ Potters Inc.
Primo Clays
South Street Gallery
Expressions/ Whirinaki
Wellclay

NZPotters Corporate Members

Our corporate members are valued for their continuing support.

Avid Gallery
Botany Pottery Studio Ltd
C.C.G. Industries
Decopot Ltd and Primo Clays
Morris & James, Matakana Ltd
Wellington Potters' Supplies Ltd

The Selector

Anita McIntyre for the tough job of selecting.

Ceramic Artists

All of the ceramic artists who submitted work for the exhibition.
Without you, there would not be an exhibition at all.

The Team at Expressions

A huge thanks to the team who have been working hard behind the scenes to bring this event together, especially Rebecca Pubben and Chriss Doherty-McGregor

The Wellclay Team

Sue Scobie, Aimée McLeod, Andy Rattenbury Nicola Dench

And thanks to all of the helpers who provided time, effort, and equipment to support the team.

EXPRESSIONS

Whirinaki

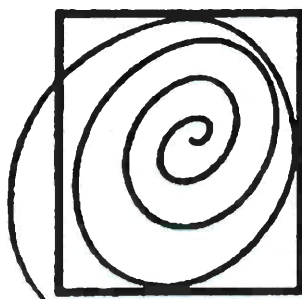


PRIMOCLAYS

South Street Gallery,
Nelson

Wellclay

NZ Potters



NZ POTTERS

Catalogue Design:
Catalogue Editing:
Photography:
Printing:

Hamish Trolove
Neil and Aimée McLeod
Nicola Dench and individual potters
WCC printers