



NZ Potters 49th
National Exhibition

**FORM
and
FIRE**

March 29 - May 11 2008

Christchurch Art Gallery - Te Puna o Waiwhetu

I welcome you to the NZ Potters 49th National Exhibition 2008 – Form and Fire. On behalf of NZ Potters I would like to thank the Christchurch Art Gallery for staging our exhibition.

Our lives are enriched by the ceramic pieces we have in our homes, both functional and sculptural work. The public viewing this exhibition will experience work that has been fired in several different ways, the pieces themselves produced in several different ways, using a huge range of glazing techniques. This is the variety of clay work presented in our National Exhibitions.

I congratulate the potters who have had work selected and the selection team who have spent hours assessing each piece. Thank you, Margaret Ryley, Grant Banbury and Peter Vangioni; this is never an easy experience but I am sure all of you have enjoyed the opportunity to select this exhibition. A huge thank you to all the sponsors; Kumiko Black, Ballantynes, Novus, Cobcraft, Pot Shop and NZ Potters.

These events are not organised over night, I would like to thank the Exhibition Team of CantaClay who have put hours of work in for our benefit.

I invite you to walk slowly around the work evaluating each piece, appreciating the time and effort put in by each potter, and the individuality of the clay work reflecting Aotearoa today.

Janet Smith
President NZ Potters Inc



Form and Fire

Opening night sales procedure

To purchase a work, after the exhibition has been declared open, remove the grey sales card from the display and take it to the Sales Desk. The details will be recorded and you will be asked to complete the purchase by making payment in full in *Form Gallery* where EFTPOS and credit card facilities are available. *Form Gallery* is accessed through the gallery shop.

Collection of purchased work

Work may be picked up from The Pot Shop in the Arts Centre after mid-day on Tuesday, May 13. If the work is to be couriered elsewhere in New Zealand a surcharge of \$15 will be added to cover packing and courier.

Acknowledgements

J. Ballantyne & Co., Black Estate, Waipara, Cobcraft, NZ Potters Inc., Canterbury Potters Association, Christchurch Art Gallery, Form Gallery, Novus Autoglass, The Pot Shop, Christchurch Arts Centre, Mr Bob Parker, Mayor of Christchurch, Members of Cantaclay.

Credits

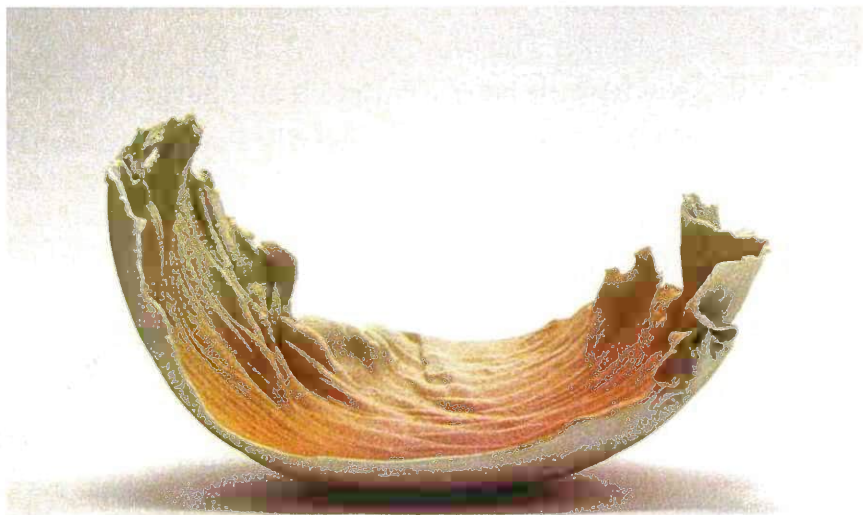
Convenor - Neil Hey
Design - Gallery Staff & Frederika Ersten
Photography & Catalogue - Jim Pollard
Printing - University of Canterbury Print & Copy
Selectors - Grant Banbury, Margaret Ryley, Peter Vangioni

Awards

Kumiko Black Premier Award for functional pottery	\$1000
Ballantynes Premier Award for non-functional pottery	\$1000
Novus Autoglass Merit Award for functional pottery	\$750
NZ Potters Inc Merit award for non-functional pottery	\$750
Cobcraft Student Award	\$200

The Pot Shop Public Choice Award

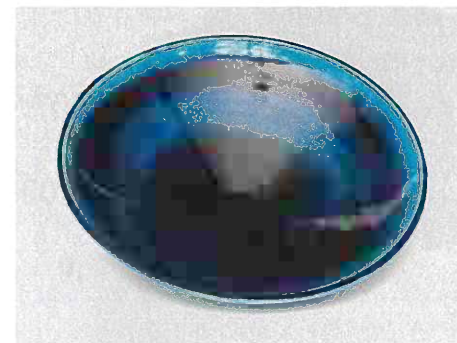
Everyone who visits the exhibition is invited to cast a vote for the work they like best. At the conclusion of the exhibition the potter who made the most popular work will receive The Pot Shop Award of \$100. One of the voting forms will then be drawn at random from all the votes cast and the lucky winner will receive this work donated by Canterbury's most respected potter, David Brokenshire.



Graham Ambrose

Massey

1. *Galaxy*. 150 bowl.
Stoneware. **\$1500**



1.

Pamela Ansouth

Waikanae

2. *Pink platter*.
Stoneware. 2007. \$180



2.

Reneé Boyd

Auckland

3. *Beach walk series*.
Stoneware. 2008. \$900



3.

**Tim Brown
Christchurch**

4. *White Patu #2*. Earthenware. 2007.

\$750

5. *White Zigsag #1*. Earthenware. 2007.

\$750

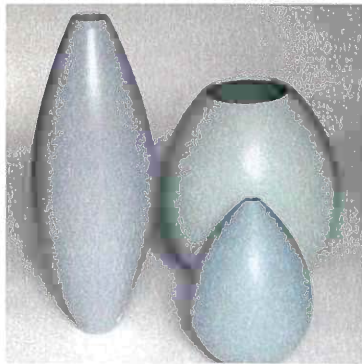


4.

**Peter Collis
Auckland**

6. *Quiet*. LF Stoneware.

2008. Set of 3. \$750



6.

**Arnold Davey
Palmerston North**

7. Double walled vessel.

Raku. 2008. \$220



7.

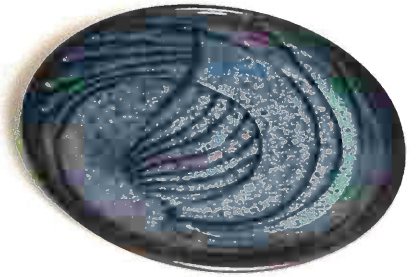
**Frederika Ernten
Woodend**

8. Plate. Stoneware. 2006.

\$360

9. Plate. Stoneware. 2007.

\$360



9.

**Kate Fitzharris
Waitati**

10. *The water carrier*.

Ceramic/wool/cotton. 2008. \$300

11. *The tortoise & the hare*

Ceramic/wool/cotton. 2008. \$550

12. *Some things familiar*

Ceramic/wool/cotton. 2008. \$750



10.

**Mary Lou Foate
Christchurch**

13. *Bird on top*. Stoneware. 2006.

\$380



13.

**Katie Gold
Upper Moutere**

14. *5 layer Pohutakawa bowl*. Stoneware. 2007. \$650

15. *Spiral shell Pohutakawa standing bowl*. Stoneware. 14. 2008. \$700



**Neil Grant
Dunedin**

16. *Faceted vase*. Stoneware. 2008. \$580

17. *Faceted bottle*. Stoneware. 2008. \$460

18. *Bowl*. Stoneware. 2008. \$110



17.

**Neil Hey
Rangiora**

19. *Centurion Side bowls*. Set of 4. Stoneware. 2008. \$180

19.



**Jo Howard
Dunedin**

20. *Domestic Icon*
LF Stoneware. 2007. \$280

21. *Table necklace*.
LF stoneware. 2007. \$250



20.

**Jean Kahui
Waikanae**

22. *Goddess unearthed*.
LF Stoneware. 2008. \$864



22.

**Yi-Ming Lin
Leeston**

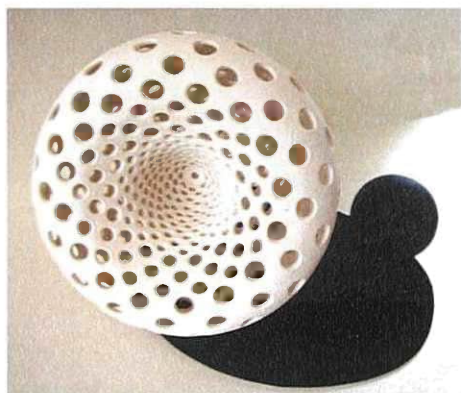
23. *Your cup of tea?*
Stoneware. 2008. \$180

23.



**Fran Maguire
Blenheim**

24. *Mother and child*
Earthenware. 2007. \$3800
25. *Space, light, time &
mass.* Earthenware. 2007.
\$2500



25.

**Aimeé McLeod
Wellington**

26. *At peace with the
elements.*
Porcelain. 2008. \$150
27. *Seeking new horizons.*
Porcelain. 2008. \$150
28. *3 ships come sailing*
Porcelain. 2008. \$150



28.

**Amy Michaels
Pines Beach**

29. Porcelain doll.
2007. \$950



29.

**Michael Michaels
Pines Beach**

30. *The Acrobat II.*
Stoneware. 2007. \$2700
31. *Head of a Canonical*
Stoneware. 2007. \$1850
32. *Head.* Stoneware.
2007. \$1250

30.



Figure

**Seiji Miyajima
Christchurch**

33. *A single flower vase - Chinese
fiddle.* Stoneware. 2008. \$280
34. *A single flower vase - high
chair.* Stoneware. 2008. \$230
35. *A single flower vase. Volcano.*
Stoneware. 2008. \$280

34.



**Margaret Mouat-Carver
Christchurch**

36. *Precious source.*
Stoneware. 2006. \$850

36.



**Akane Nakao
Christchurch**

37. A set of small bowls.
Stoneware. 2008. \$260
38. Beaker.
Stoneware. 2006. \$60



37.

**Sue Newitt
Upper Moutere**

39. Large porcelain bowl.
2008. \$195
40. Small porcelain bowl.
2008. \$75
41. Teapot & two cups
Porcelain. 2008. \$210



41.

**John Parker
Auckland**

42. *Stemmed bowl*. White
stoneware. 2007. \$950



42.

**Anne Powell
Taupo**

43. *Shard series - cylinder*.
Porcelain & glass rods.
2008. \$175
44. *Shard series - vase form*.
Porcelain & glass rods.
2008. \$175
45. *Shard series - bowl form*
Porcelain & glass rods.
2008. \$175



44.

**Anu Pratap
Christchurch**

46. *Coiled form*. Stoneware.
2008. \$400



46.

**Jan Priestly
Christchurch**

47. *Arch. Remnants*.
Earthenware. 2003.
\$600



47.

Linda Pringle

Lyttelton

48. Tradition. Paperclay.
2008. \$600

49. *¼ acre Pavlova Paradise.*

Paperclay. 2008. \$600

50. *Changed Forever.*

Paperclay.

2008. \$600

50.



Hugh Prosser

Putaruru

51. *Landscape platter*

Stoneware. 2008. \$225

51.



Michelle Retimana

Waikanae

52. *Freestanding koru*

Pair with copper wire spiral

Pitfired. 2007. \$325

52.



Hugh Ricard

Christchurch

53. *Koi carp at play.*

Raku bowl. 2008. \$395

53.



Ross Richards

Nelson

54. Teapot. Midfired.

2007. \$200

54.



Darryl Robertson

Upper Moutere

55. *DNA. Dream on a*

cloud. Porcelain/marble.

2007. \$2500

55.



John Roy
Tauranga

56. *Divide*. Earthenware.
2008. \$1225



56.

Rick Rudd
Wanganui

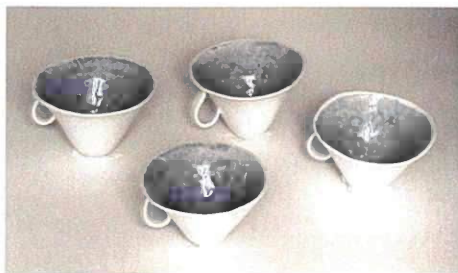
57. Teapot. Earthenware.
2008. \$650
58. Teapot. Earthenware.
2008. \$625
59. Teapot. Earthenware.
2008. \$595



57.

Margaret Ryley (Selector)
Rangiora

60. Jar. Stoneware
2008. \$950
61. Jar. Stoneware.
2008. \$950
62. 4 cups. Porcelain.
2008. \$560



62.

Barbara Skelton
Auckland

63. Gold lustre set.
Porcelain. 2007. \$210



63.

Susan Sky
Christchurch

64. *First Ark*. Stoneware.
2008. \$300



64.

Mirek Smisek
Waikanae Beach

65. Seven bowls.
Stoneware. 2008. \$350



65.

Janet Smith
Cambridge

66. Three jugs.
Stoneware. 2008. \$280
67. Teapot
Stoneware. 2008. \$200

67.



Rosemary Thompson
Christchurch

68. Bird. Pit fired.
2007. \$190
69. Pair of birds
Pit fired. 2007. \$225

69.



Dianne Toscano
Wellington

70. *A step in time.*
Earthenware. 2008. \$500

70.



Fiona Tunnicliffe
Putaruru

71. *Hobby horse*
Earthenware. 2008. \$395

71.



Liz Walker
Lyttelton

72. *Astral slumber*
Raku. 2008. \$295

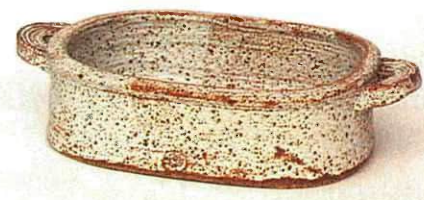
72.



Kate Walton
Christchurch

73. *Baking dish.*
Stoneware. 2008.
\$95

73.



Teresa Watson
Auckland

74. *Voyaging of two nations*. Earthenware. 2007. \$750

74.



Paul Winspear
Takaka

75. *Blue spiral bowl*. Earthenware. 2007. \$350

76. *Gold spiral bowl*. Earthenware. 2007. \$350

75.



Helen Yau
Pakuranga

77. *Water logic*. Porcelain/stoneware 2007. \$\$550

78. *Recall*. Porcelain/stoneware 2007. \$330

77.



Jin Ling Zhang
Whangarei

79. *Dove*. Earthenware. 2008. \$1550

79.



good reasons
to head to the city



Fashion | Food | The Home | Beauty

Your first hour is free when you park in the Lichfield Street Parking Building adjacent to Ballantynes and in the Crossing Car Park on Lichfield Street.

City Mall, Christchurch. Ph: (03) 379-7400 or 0800-656-400. www.ballantynes.com.

Ballantynes

black
estate

Cobcraft **Mail Order**

PO Box 32024, Christchurch
Phone 03 3667229, Fax 03 3666847
Mobile 027 4372592, www.cobcraft.co.nz

For All Your Crat Needs
Kiln*Wheels*Clay*Elements*Kiln Shelves & Propos
Pottery Tools*Stains*Glazes*
Onglazes & Underglazes*Lustres* RAW Materials*Brushes

Advice and Prompt Service

*

nzpotters.com

The website of NZ Potters Inc

This extensive website contains a wealth of information about nzpotters including members' pages, technical articles, affiliated clubs, education, employment, competitions, exhibitions, instructors, news and current events, discussion forum, and for members, access to the Potters Marks collection and society information including contact details of other members.

