

GOVETT-BREWSTER
ART GALLERY
new plymouth

45TH
new zealand
society of
POTTERS
annual
EXHIBITION

22 OCTOBER - 20 NOVEMBER 1983

25TH

SPONSORS

***Fletcher Brownbuilt, Resene Paints Ltd,
Pan Am, Scott Commercial Ltd,
Taranaki Savings Bank and Winstone Ltd.***

FOREWORD

This exhibition, the 25th Annual Exhibition of the New Zealand Society of Potters, has been arranged to coincide with the National Conference of that organisation held in New Plymouth over Labour week-end 1983.

A warm welcome is extended to all Gallery visitors to this exhibition, especially those potters from all parts of New Zealand here for their National Conference. Please take advantage of the facilities and hospitality offered by your host Gallery. Every enquiry is welcomed.

Dick Bett

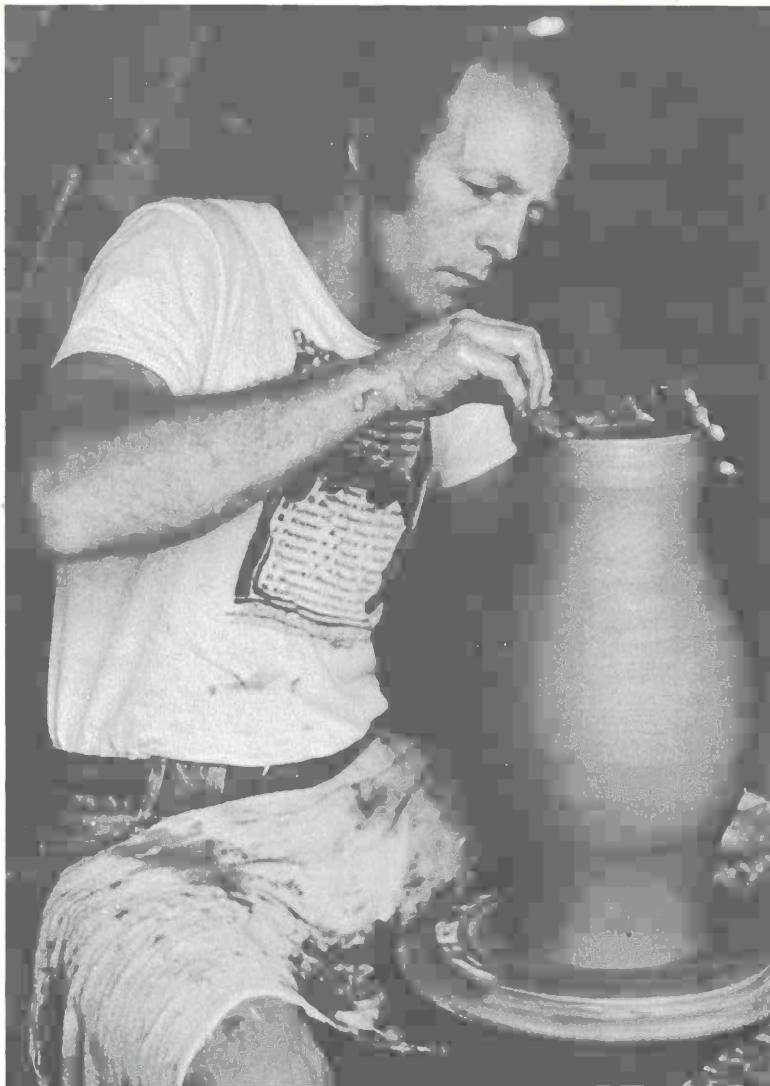


Elsa Rady, U.S.A.

Elsa Rady is a New York born potter who now lives and works in Venice, California. She specializes in very fine porcelain pieces. Currently her work focuses on conical forms with a strong interest in the rims, and the use of coloured glazes. She is represented in many collections of major art galleries in the United States. Elsa will be in New Zealand for about six weeks, running workshops. A real perfectionist, she has arranged to bring her own clay with her from the United States, to ensure desired results. While in the country she will fulfil a wish to visit the rainforests of Westland.

Elsa Rady, U.S.A.

- | | | | |
|----|-------------------------------|------------------|----------------|
| 1. | <i>Turquoise Bowl</i> | <i>Porcelain</i> | <i>US\$800</i> |
| 2. | <i>Pink Bowl</i> | <i>Porcelain</i> | <i>700</i> |
| 3. | <i>Green Bowl</i> | <i>Porcelain</i> | <i>600</i> |
| 4. | <i>Grey Blush Bowl</i> | <i>Porcelain</i> | <i>1,200</i> |
| 5. | <i>Cobalt Blue Gloss Bowl</i> | <i>Porcelain</i> | <i>800</i> |
| 6. | <i>Matt Black Bowl A</i> | <i>Porcelain</i> | <i>1,200</i> |
| 7. | <i>Copper Red Bowl</i> | <i>Porcelain</i> | <i>NFS</i> |
| 8. | <i>Matt Black Bowl B</i> | <i>Porcelain</i> | <i>900</i> |



Jack Troy, U.S.A.

Jack Troy, who hails from Pennsylvania, U.S.A., divides his time between his own claywork and tutoring in ceramics at college level. He has conducted numerous workshops all over the United States and been a guest tutor at a number of different universities. His publications on salt-glaze firing and anagama firing have become virtually standard texts. Jack has been keen to come to New Zealand for some time, to see local work and to further his current research for a book on salt-glaze kilns around the world. This three-month visit has been made possible through the sponsorship of Fletcher Brownbuilt. While here he is conducting various workshops in different parts of the country and intends to walk the Milford Track.

Jack Troy, U.S.A.

9.	Faceted Vase	Anagama-fired Stoneware	US\$150
10.	Paddled Bottle	Anagama-fired Stoneware	125
11.	Cylindrical Vase	Anagama-fired Stoneware	150
12.	Bottle with Tipped Lip	Anagama-fired Stoneware	125
13.	Four-sided Paddled Bottle	Anagama-fired Stoneware	300
14.	Four-sided Bottle	Anagama-fired Porcelain	110
15.	Bottle with Elongated Neck	Porcelain	135
16.	Bottle with Stony Texture	Porcelain	135
17.	Bottle with Stones	Porcelain	110
18.	Bottle with Glaze Run	Porcelain	90
19.	Copper Red Teapot	Porcelain	75
20.	Copper Red Bottle	Porcelain	135
21.	Covered Jar	Porcelain	75
22.	Vase with Blue-Green Slip	Salt-glazed Porcelain	300
23.	Teabowl with Haresfur Slip	Salt-glazed Porcelain	175
24.	Slumped Form with White Slip	Salt-glazed Stoneware	150
25.	Pitcher with Iron-saturated Glaze	Salt-glazed Porcelain	110
26.	Vase	Salt-glazed Stoneware	125

AUCKLAND REGION

Selectors: *Brian Muir, Rick Rudd & Howard Williams*

Frank Bates, Warkworth

- | | | | |
|-----|--------------|-----------|------|
| 27. | Teapot | Stoneware | \$60 |
| 28. | Faceted Vase | Stoneware | 55 |
| 29. | Faceted Jar | Stoneware | 35 |

Jan Bell, Auckland

- | | | | |
|-----|-------|-----------|-----|
| 30. | Jar A | Stoneware | 200 |
| 31. | Jar B | Stoneware | 200 |

Roger Brittain, Auckland

- | | | | |
|-----|--------------------|-----------|----|
| 32. | Dichromic Bottle A | Stoneware | 32 |
| 33. | Dichromic Bottle B | Stoneware | 33 |

Rosemarie Brittain, Auckland

- | | | | |
|-----|-------------------------------|-----------|----|
| 34. | Pink Elephant & Balloons | Porcelain | 32 |
| 35. | Pink & White Elephant Bowl | Porcelain | 30 |
| 36. | Tipsy Elephant Bowl | Porcelain | 32 |
| 37. | Pair of Footed Elephant Bowls | Porcelain | 60 |

Len Castle, Auckland

- | | | | |
|-----|----------------|-----------|-----|
| 38. | Hanging Form A | Stoneware | 250 |
| 39. | Hanging Form B | Stoneware | 250 |

Chris Cockell, Auckland

- | | | | |
|-----|---------------------------|-----------|----|
| 40. | Pair of Stoppered Bottles | Stoneware | 30 |
| 41. | Stoppered Bottle | Stoneware | 25 |

Jan Cockell, Auckland

- | | | | |
|-----|----------------------|----------------------|----|
| 42. | Teapot | Ash-glazed Porcelain | 55 |
| 43. | Trinket Box | Ash-glazed Porcelain | 25 |
| 44. | Group of 3 Cylinders | Ash-glazed Porcelain | 60 |

Judy Dickson, Whangarei

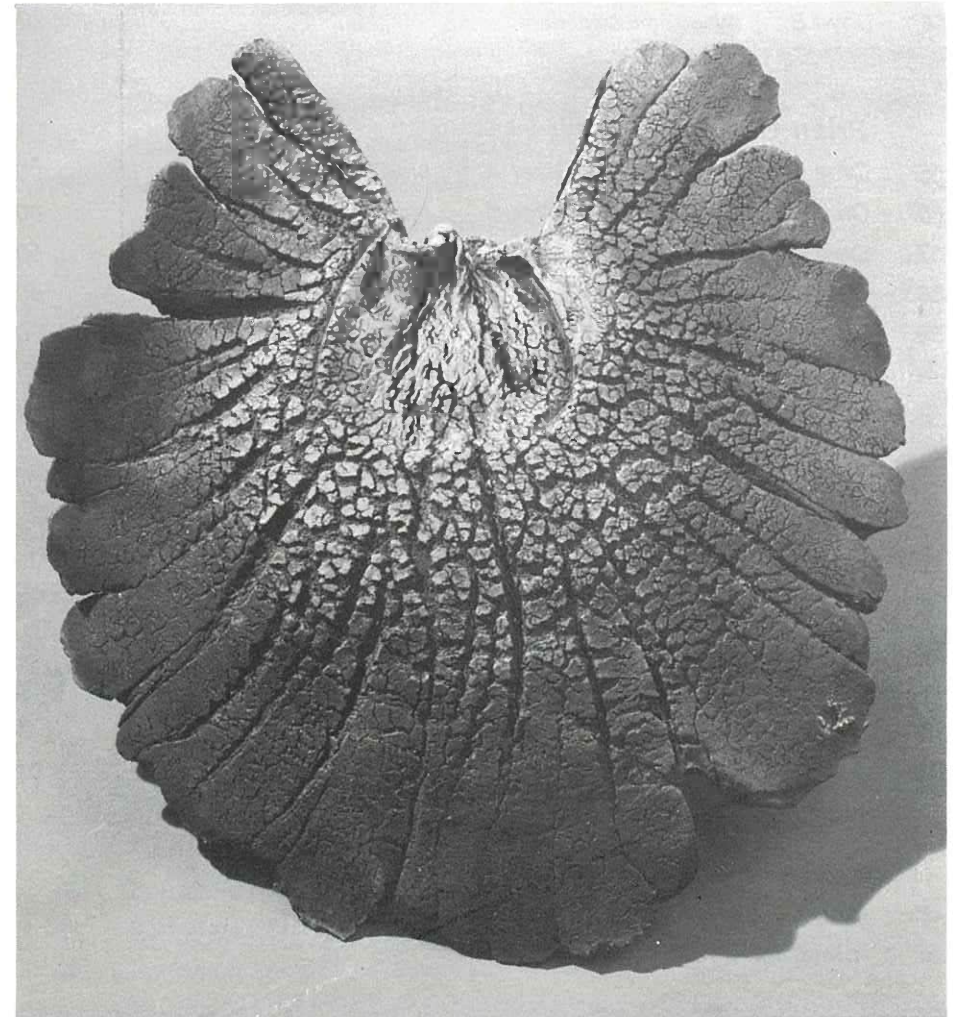
- | | | | |
|-----|-------------|-----------|-------|
| 45. | Bush Teapot | Stoneware | \$ 40 |
|-----|-------------|-----------|-------|

Ted Dutch, Auckland

- | | | | |
|-----|------------------------|----------------------------|----|
| 46. | Signaller Wall Panel A | Porcelain with fired metal | 80 |
| 47. | Signaller Wall Panel B | Porcelain with fired metal | 80 |

Ron Efferion, Auckland

- | | | | |
|-----|------|-----------|----|
| 48. | Bowl | Porcelain | 15 |
|-----|------|-----------|----|



Len Castle, Auckland: Hanging Form A, Stoneware

Moyra Elliott, Auckland

49. Bowl Form Smoked Earthenware \$110

Ian Firth, Warkworth

50. 10-pint Casserole Stoneware 75
 51. Barbeque Drinkset (7 pieces) Stoneware 130
 52. Dish Stoneware 55

Margaret Gallagher, Auckland

53. Bowl A Wood-fired Stoneware 45
 54. Bowl B Wood-fired Stoneware 20

Brian Gartside, Drury

55. On a Theme of Waikato River A Stoneware 90
 56. On a Theme of Waikato River B Stoneware 90
 57. On a Theme of Waikato River C Stoneware 50
 58. On a Theme of Waikato River D Stoneware 50
 59. On a Theme of Waikato River E Stoneware 50

Jillian Hay, Auckland

60. Plate Stoneware 45

Barbara Hockenhull, Wellsford

61. Bowl A Porcelain 36
 62. Bowl B Porcelain 36
 63. Bowl C Porcelain 36
 64. Bowl D Porcelain 36
 65. Bowl E Porcelain 36

Alan Kestle, Auckland

66. Inlaid Orb A Porcelain 38
 67. Inlaid Orb B Porcelain 18

Beverley Luxton, Auckland

68. Lustred Bowl A Porcelain \$45
 69. Lustred Bowl B Porcelain 28
 70. Lustred Pill Box A Porcelain 32
 71. Lustred Pill Box B Porcelain 38

Wallace Luxton, Auckland

72. Platter Stoneware 25

Margaret Mouat, Whangarei

73. Platter Stoneware 48

Chester Nealie, Auckland

74. Round Jar Wood-fired Stoneware 95
 75. Bottle Wood-fired Stoneware 350
 76. Jar with Lug Wood-fired Stoneware 245
 77. Tea Pot Wood-fired Stoneware 75

Stuart Newby, Auckland

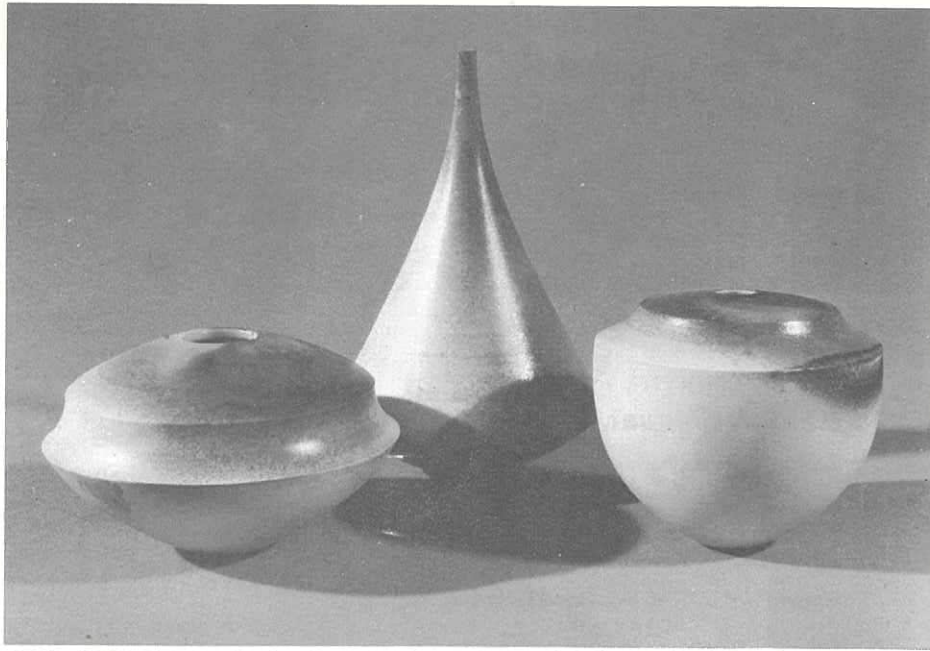
78. Jar A Salted Stoneware 15
 79. Jar B Salted Stoneware 12
 80. Pair of Jars Salted Stoneware 20

John Parker, Auckland

81. Pitted White Bowl A Stoneware 55
 82. Pitted White Bowl B Stoneware 65
 83. Pitted White Bowl C Stoneware 65
 84. Pitted White Bowl D Stoneware 75

Cecilia Parkinson, Auckland

85. Porcelain Form A Saggar-fired Porcelain 30
 86. Porcelain Form B Saggar-fired Porcelain 30
 87. Porcelain Form C Saggar-fired Porcelain 25



Cecilia Parkinson, Auckland: Porcelain Forms B, A and C, Saggar-fired Porcelain

Robin Paul, Auckland

- 88. Crackle Bottle Porcelain \$18
- 89. Flanged Vase Porcelain 22

Rick Rudd, Auckland

- 90. Raku No. 657 Raku 325
- 91. Raku No. 658 Raku 150
- 92. Raku No. 659 Raku 100
- 93. Raku No. 660 Raku 125

Brett Smout, Auckland

- 94. Green Bowl Stoneware 70

Robyn Stewart, Whangarei

- 95. Moko Tangata 1 Low-fired Burnished Earthenware 198
- 96. Moko Tangata 2 Low-fired Burnished Earthenware 228

Margaret Sumich, Auckland

- 97. Pair of Vases Stoneware \$30

Carrol Swan, Auckland

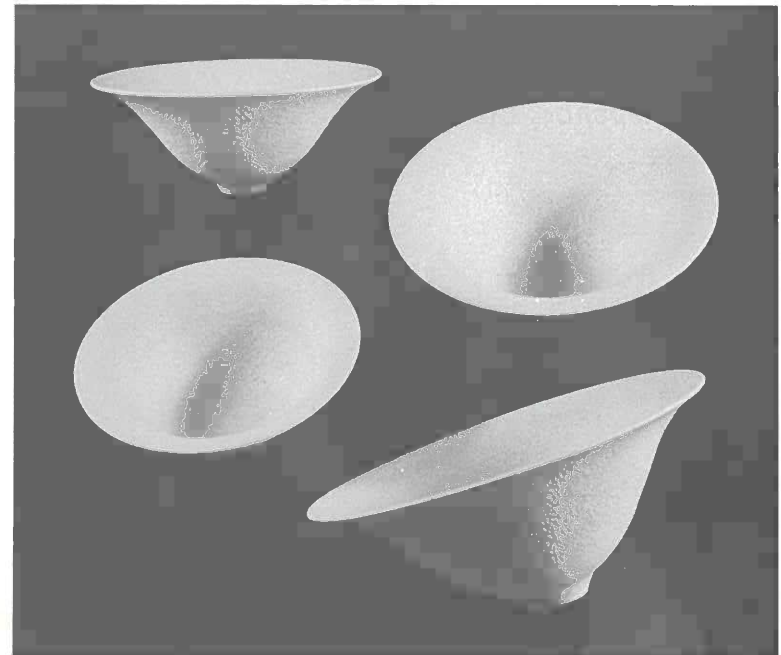
- 98. Gold Pocket Watch Porcelain 72
- 99. Bowl and Box Set Porcelain 75

Robyn Wynyard, Auckland

- 100. Celadon Vase A Porcelain 36
- 101. Celadon Vase B Porcelain 35
- 102. Celadon Vase C Porcelain 30

Steve Yeoman, Auckland

- 103. Porcelain Vase A Wood-fired Porcelain 32
- 104. Porcelain Vase B Wood-fired Porcelain 24
- 105. Porcelain Vase C Wood-fired Porcelain 42



John Parker, Auckland: Pitted White Bowls A, B, C and D, Stoneware

CANTERBURY REGION

Selectors: Nola Barron, David Brokenshire & Rex Valentine

Aina Apse, Christchurch

- | | | | |
|------|------------|-------------|------|
| 106. | Floor Bowl | Earthenware | \$65 |
| 107. | Fruit Bowl | Earthenware | 55 |

Raewyn Atkinson, Christchurch

- | | | | |
|------|----------|----------------------|-----|
| 108. | Galleon | Wood-fired Stoneware | 150 |
| 109. | Bowl | Stoneware | 25 |
| 110. | Minarets | Stoneware | 150 |

Nola Barron, Christchurch

- | | | | |
|------|-----|-----------|----|
| 111. | Pot | Stoneware | 90 |
|------|-----|-----------|----|

Gita Berzins, Christchurch

- | | | | |
|------|----------------|-----------|-----|
| 112. | Erosion Form A | Stoneware | 140 |
| 113. | Erosion Form B | Stoneware | 60 |
| 114. | Erosion Form C | Stoneware | 40 |

David Brokenshire, Christchurch

- | | | | |
|------|--------------|-----------|----|
| 115. | Cloud Bowl 1 | Porcelain | 80 |
| 116. | Cloud Bowl 2 | Porcelain | 80 |

Averil Cave, Christchurch

- | | | | |
|------|-----------|-----------|----|
| 117. | Casserole | Stoneware | 48 |
| 118. | Jug | Stoneware | 20 |

Sally Connolly, Christchurch

- | | | | |
|------|----------|-----------|----|
| 119. | Slab Pot | Stoneware | 50 |
|------|----------|-----------|----|

Valerie Crichton, Christchurch

- | | | | |
|------|----------|-----------------------|----|
| 120. | Cylinder | Pit-fired Earthenware | 50 |
|------|----------|-----------------------|----|

Ann Davie, Christchurch

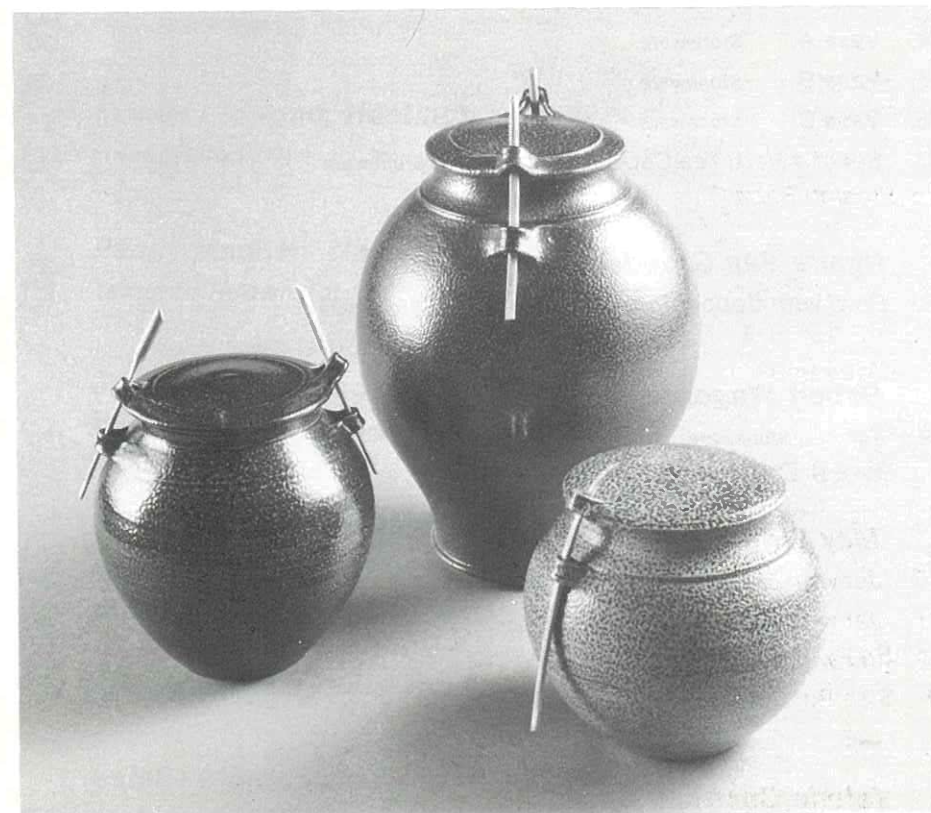
- | | | | |
|------|---------|-----------|------|
| 121. | Plate A | Stoneware | \$60 |
| 122. | Plate B | Stoneware | 50 |

Frederika Ernsten, Christchurch

- | | | | |
|------|--------|-----------|----|
| 123. | Teapot | Stoneware | 45 |
| 124. | Bowl | Stoneware | 45 |
| 125. | Bottle | Stoneware | 36 |

Lawrence Ewing, Cust

- | | | | |
|------|--------|-----------|-----|
| 126. | Vase | Stoneware | 325 |
| 127. | Plate | Stoneware | 195 |
| 128. | Bottle | Stoneware | 195 |



May Wright, Canterbury: Jars with Lids B, A and C, Salt-glazed Stoneware

Anthea Grob, Christchurch

129. Pot with Hands Pit-fired Stoneware \$50

Jan Harris, Canterbury

130. Bottle Smoked Stoneware 25

Robyn & Tim Lindley, Christchurch

131. Bowl Stoneware 36

Rosemary Perry, Christchurch

132. Iron Red Onion Jar Stoneware 75

133. Multi-coloured Bowl Stoneware 75

Rex Valentine, Lyttelton

134. Vase A Stoneware 35

135. Vase B Stoneware 35

136. Vase C Stoneware 25

137. Set of 4 Herb Tea Cups & Saucers Stoneware 45

Ngairé Van Grondelle, Christchurch

138. Bowl with Copper Pink Decoration Stoneware 55

Robert Wagoner, Christchurch

139. Jar Stoneware 120

May Wright, Sheffield

140. Jar with Lid A Salt-glazed Stoneware 25

141. Jar with Lid B Salt-glazed Stoneware 18

142. Jar with Lid C Salt-glazed Stoneware 14

HAWKES BAY REGION

Selectors: Warner Haldane, Chester Nealie & Fairlie Rowe

Alan Gordon, Gisborne

143. Bottle Pit-fired Stoneware \$80

144. Jar Pit-fired Stoneware 65

Ingeborg Jenssen, Napier

145. Decorative Pot A Pit-fired Stoneware 35

146. Decorative Pot B Pit-fired Stoneware 40

Chloe King, Havelock North

147. Pouff Pot Stoneware 100

148. Jar Stoneware 350

149. Pot Stoneware 200

Mandy Linwood, Hastings

150. Handcrafted Bowl Stoneware 40

Penny Madden, Napier

151. Textured Thrown Pot Stoneware 35

Julie Mair, Hastings

152. Round Seaform Stoneware & Porcelain 25

Bruce Martin, Hastings

153. Mizusachi Anagama-fired Stoneware 300

154. Hanaire Anagama-fired Stoneware 300

155. The Wreck Anagama-fired Stoneware NFS

156. Kakahana Anagama-fired Stoneware 30

Estelle Martin, Hastings

157. Tsubo A Anagama-fired Stoneware 650

158. Tsubo B Anagama-fired Stoneware 650

159. Tokkuri Anagama-fired Stoneware \$ 30
 160. Kakahana Anagama-fired Stoneware 30

Helen Mason, Tokomaru Bay

161. Chunks from Outer Space Series III Stoneware 75
 162. Chunks from Outer Space Series IV Stoneware 75

Gaeleen Morley, Taradale

163. Trio Fume-fired Porcelain 75
 164. Solo A Fume-fired Porcelain 25
 165. Solo B Fume-fired Porcelain 25

Fairlie Rowe, Havelock North

166. Feathered Form A Porcelain & Feathers 55
 167. Feathered Form B Porcelain & Feathers 40



Katherine Sanderson, Manawatu: Jar with Terra Sigillata Decoration, Earthenware

MANAWATU REGION

Selectors: Anneke Borren, Margaret Taylor & Paul Winspear.

Val Bryant, Feilding

168. Bowl, Pinched Edge Porcelain \$16

Ross Mitchell-Anyon, Wanganui

169. Planter A Stoneware 70
 170. Planter B Stoneware 70
 171. Covered Jar Stoneware 18
 172. Pestle & Mortar Stoneware 20
 173. Six Wine Cups Stoneware 25

Tony Reardon, Pahiatua

174. Bottle Fly-ash glazed Stoneware 42
 175. Bottle with Tap Fly-ash glazed Stoneware 46
 176. Pair of Gulley-mouthed Pitchers Stoneware 50

Katherine Sanderson, Palmerston North

177. Jar with Terra Sigillata Decoration Earthenware 95
 178. Jug with Terra Sigillata Decoration Earthenware NFS
 179. Storage Pot with Terra Sigillata Decoration Earthenware 40
 180. Platter Raku 95

NELSON REGION

Selectors: John Crawford, Peter Gibbs & Royce McGlashen

John Crawford, Ngakawau

181.	Pair of Landscape Vases	Stoneware	\$280
182.	Reclining Women (2 pieces)	Stoneware	120
183.	Bowl	Stoneware	59
184.	Box A	Porcelain	35
185.	Box B	Porcelain	35

Vic Evans, Wakefield

186.	Copper Red Vase A	Porcelain	45
187.	Barium Blue Bowl	Porcelain	30
188.	Copper Red Vase B	Porcelain	75
189.	Barium Blue Vase	Porcelain	60

Steve Fullmer, Upper Moutere

190.	Jug	Stoneware	50
------	-----	-----------	----

Peter Gibbs, Brightwater

191.	Crock A	Salted Stoneware	75
192.	Crock B	Salted Stoneware	60
193.	Jar	Salted Stoneware	95
194.	Bottle	Salted Stoneware	95

David Griffith, Nelson

195.	Red Pot	Low-fired Stoneware	30
196.	Yellow & White Pot	Low-fired Stoneware	30
197.	Red Bowl	Low-fired Stoneware	30
198.	Yellow Bowl	Low-fired Stoneware	30

Lynne Griffith, Nelson

199.	White Pot	Sawdust-fired Earthenware	15
200.	Pink Pot	Sawdust-fired Earthenware	15



Royce McGlashen, Nelson: Teapots A, B and C, Saggar-fired Porcelain

Margaret Hunt, Waimangaroa

201.	Bowl	Porcelain	NFS
------	------	-----------	-----

Marjorie Johnston, Hope

202.	Bottle	Stoneware	\$10
------	--------	-----------	------

Royce McGlashen, Brightwater

203.	Country Picnic A	Porcelain	190
204.	Country Picnic B	Porcelain	80
205.	Teapot A	Saggar-fired Porcelain	70
206.	Teapot B	Saggar-fired Porcelain	70
207.	Teapot C	Saggar-fired Porcelain	70

Toni Maurenbrecher, Motueka

208.	Set of 2 Raku Pieces	Raku	40
209.	Plate	Raku	24

Darryl Robertson, Motueka

210.	Burnt Landscape A	Stoneware	26
211.	Burnt Landscape B	Stoneware	41

OTAGO REGION

Selectors: Frank Dickenson, Neil Grant & Helen Telford

Neil Grant, Dunedin

212.	Brush Decorated Plate	Stoneware	\$95
213.	Brush Decorated Bowl	Stoneware	45

Danny Moorwood, Dunedin

214.	Bottle A	Stoneware	52
215.	Bottle B	Stoneware	24

Gillian Pope, Dunedin

216.	Slip-carved Jar	Wood-fired Stoneware	80
217.	White Jar	Wood-fired Stoneware	80

Mike Searle, Mosgiel

218.	Box	Stoneware	28
------	-----	-----------	----

Della Slattery, Coal Creek

219.	Decanter	Wood-fired Stoneware	65
220.	Bowl	Wood-fired Stoneware	25
221.	Jewel Box	Wood-fired Stoneware	20

Rob Wood, Coal Creek

222.	Bowl A	Wood-fired Stoneware	20
223.	Bowl B	Wood-fired Stoneware	20
224.	Bowl C	Wood-fired Stoneware	28

SOUTHLAND REGION

Selectors: Kobi Bosshard, Pat Bosshard & Neil Grant

Ann Clifford, Wyndham

225.	Emerging Ideas A	Porcelain	\$40
226.	Emerging Ideas B	Porcelain	40
227.	Emerging Ideas C	Porcelain	40
228.	Emerging Ideas D	Porcelain	40
229.	Emerging Ideas E	Porcelain	40

Olwyn Dykes, Invercargill

230.	Cylinder A	Wood-fired Stoneware	20
231.	Cylinder B	Wood-fired Stoneware	23

Helen Faulkner, Invercargill

232.	Plate A	Stoneware	60
233.	Plate B	Stoneware	60
234.	Plate C	Stoneware	60

Murray Fox, Invercargill

235.	Bowl	Stoneware	40
236.	Large Bowl	Stoneware	85

Frances Fredric, Invercargill

237.	Ring Box	Cobalt with Platinum Oxidised Stoneware	35
238.	Ring Box	Cobalt with Platinum Oxidised Stoneware	20

Peter Johnson, Riverton

239.	Ring Box A	Stoneware	25
240.	Ring Box B	Stoneware	25

Allan Young, Invercargill

241.	Jar	Wood-fired Stoneware	30
242.	Decorated Jar	Stoneware	18

TARANAKI REGION

Selectors: Rosemarie Brittain, Don Driver & Mike Spencer.

Nick Brandon, Inglewood

243.	Red Bottle	Wood-fired Stoneware	NFS
244.	Black Jar	Wood-fired Stoneware	\$350
245.	Shino Jar	Wood-fired Stoneware	350
246.	Black, Green & Red Bottles (3 pieces)	Wood-fired Stoneware	550

Jane Capon, New Plymouth

247.	Taranaki Landscape A	Porcelain	60
248.	Taranaki Landscape B	Porcelain	60
249.	Taranaki Landscape C	Porcelain	60

Nolene Davidson, New Plymouth

250.	Trinket Box with Chun Glaze	Porcelain	32
------	-----------------------------	-----------	----

Roger King, Inglewood

251.	Wine Bottle	Stoneware	28
252.	Vase	Stoneware	NFS
253.	Large Jar	Stoneware	350

Carolyne Manins, Inglewood

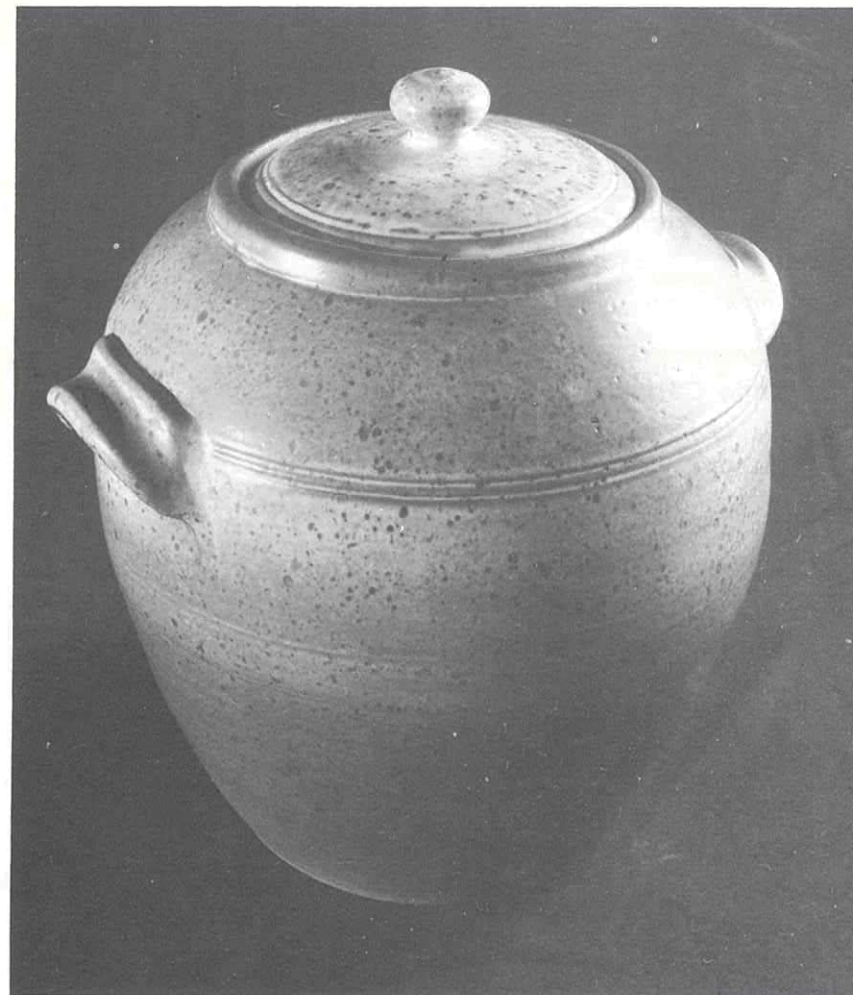
254.	Cylinder	Wood-fired Stoneware	48
------	----------	----------------------	----

Rusty Ritchie, Toko

255.	Tea Pot	Stoneware	36
256.	Bottle	Stoneware	150

Robin Sinclair, New Plymouth

257.	Sphere	Pit-fired Stoneware	50
------	--------	---------------------	----



Mike Spencer, Taranaki: Storage Jar, Stoneware

Lynn Spencer, Okato

258.	Tea Pot	Stoneware	NFS
259.	Jug	Stoneware	\$50
260.	Vase	Stoneware	35
261.	Jar	Stoneware	200

Mike Spencer, Okato

262.	Tea Pot	Stoneware	30
263.	Storage Jar	Stoneware	200

WAIKATO REGION

Selectors: Ken Gorbey, Margaret Symes & Howard Williams.

Barry Brickell, Coromandel

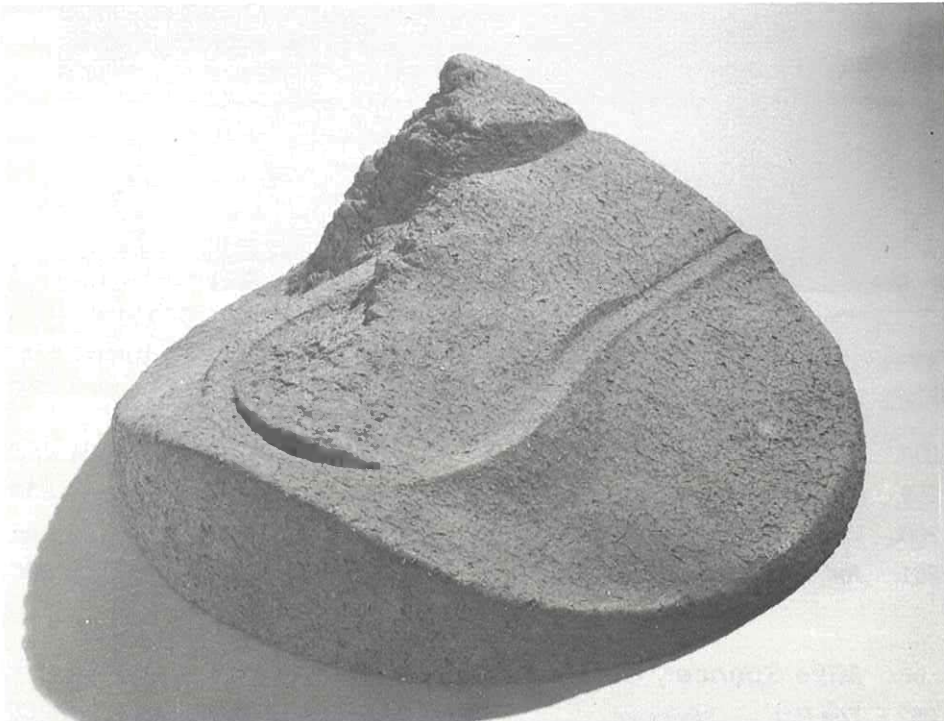
264. *Tribunal* Wood-fired Terracotta \$1,200
265. *Striking a Grade - Circular Relief Tile* Wood-fired Terracotta 300

Suzanne Catley, Hamilton

266. *Porcelain Forms I* Porcelain 50
267. *Porcelain Forms III* Porcelain 45

Tricia Hansen, Hamilton

268. *Pair of Blue Agate Bowls* Porcelain 35



Barry Brickell, Waikato: *Striking a Grade - Circular Relief Tile*, Wood-fired Terracotta

Sue Judd, Hamilton

269. *Pair of Jars* Stoneware \$70

Sue Knowles, Hamilton

270. *Bowl Form* Pit-fired Porcelain 55
271. *Fantasy A* Low-fired Porcelain 50
272. *Fantasy B* Low-fired Porcelain 50
273. *Fantasy C* Low-fired Porcelain 50

Val McArthur, Hamilton

274. *Black & White Cylinder* Porcelain 25
275. *Trinket Box* Porcelain 45
276. *Bowl* Porcelain 30

Jan White, Hamilton

277. *Sculpture* Wood-fired Terracotta 950

WELLINGTON REGION

Selectors: Jean Hastedt, Guy Ngan & Mirek Smisek.

Pamella Annsouth, Te Horo

278.	Mannequin	Stoneware	\$350
279.	Pair of Shino Grass Vases	Stoneware	25
280.	3-piece Teaset	Salt-glazed Stoneware	60

Doreen Blumhardt, Wellington

281.	Carved Terrace Pot	Stoneware	420
282.	Impressed Pot	Stoneware	150

Anneke Borren, Paraparaumu

283.	Black Wooden Lidded Pot A	Stoneware	68
284.	Black Wooden Lidded Pot B	Stoneware	46
285.	Black Pot	Stoneware	56

Flora Christeller, Wellington

286.	Pair of Terrace Stools	Stoneware	250
------	------------------------	-----------	-----

Murray Clayton, Wellington

287.	Tea Pot	Stoneware	34
------	---------	-----------	----

Chris Goslin, Raumati Beach

288.	Bowl A	Stoneware	25
289.	Bowl B	Stoneware	18

Jean Hastedt, Paraparaumu

290.	Box A	Porcelain	50
291.	Box B	Porcelain	65
292.	Box C	Porcelain	30

Raeburn Laird, Lower Hutt

293.	Black and Lustre Dish	Stoneware	50
------	-----------------------	-----------	----

Jean McKinnon, Eastbourne

294.	Unfolding Form (2 pieces)	Porcelain	\$85
295.	Form	Porcelain	65

Wendy Masters, Paraparaumu

296.	Fantail Pigeon	Porcelain on Punga Base	85
297.	Mocha Box A	Porcelain	29
298.	Mocha Box B	Porcelain	29

Patti Meads, Wellington

299.	Oval Box with Gold & Platinum Lustres	Porcelain	75
300.	Lidded Box with Gold Lustre	Porcelain	75
301.	Bottle with Gold & Platinum Lustres	Porcelain	90

Sel Ling Ngan, Wellington

302.	Bowl with Copper Red Glaze A	Porcelain	45
303.	Bowl with Copper Red Glaze B	Porcelain	40

Debbie Pointon, Raumati Beach

304.	Mai Mai	Porcelain, Bamboo & Thread	60
305.	Bowl Fragmentation	Porcelain, Bamboo & Thread	85
306.	Drum	Porcelain, Leather, Feathers & Thread	90

David Shearer, Wellington

307.	Fat Shino Bottle	Stoneware	110
------	------------------	-----------	-----

Jennifer Shearer, Wellington

308.	Dragonfly Bowl Set (5 pieces)	Porcelain	90
------	-------------------------------	-----------	----

Tony Sheppard, Wellington

309.	Hand-formed Bowl A	Saggur-fired Porcelain	25
310.	Hand-formed Bowl B	Saggur-fired Porcelain	18

Mirek Smisek, Te Horo

- | | | | |
|------|-------------------------|--------------------------------|-------|
| 311. | Wine Bottle & 6 Goblets | Salt-glazed Stoneware & Bamboo | \$141 |
| 312. | Branch Pot | Stoneware | 550 |
| 313. | Bowl | Salt-glazed Porcelain | 45 |

Mary Smith, Wellington

- | | | | |
|------|---------|------------------------|----|
| 314. | Tea Pot | Saggar-fired Stoneware | 32 |
|------|---------|------------------------|----|

Julia Van Helden, Eastbourne

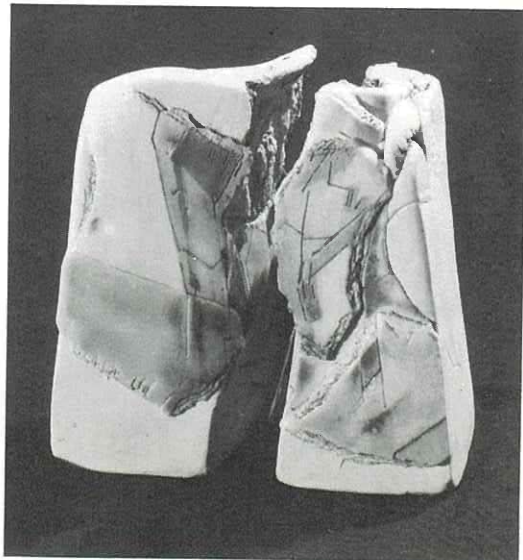
- | | | | |
|------|---------------------|----------------------------------|----|
| 315. | Unfolding | Glazed & China-painted Porcelain | 80 |
| 316. | Relating (2 pieces) | Glazed & China-painted Porcelain | 80 |
| 317. | Time Process | Glazed & China-painted Porcelain | 80 |

Penny Walker, Eastbourne

- | | | | |
|------|--------------------------|-----------|----|
| 318. | Handbuilt Tea Pot Form A | Porcelain | 58 |
| 319. | Handbuilt Tea Pot Form B | Porcelain | 58 |

Gloria Young, Wellington

- | | | | |
|------|-------------------------|-----------|----|
| 320. | Inside Looking Out | Porcelain | 45 |
| 321. | Sherry for 2 (2 pieces) | Porcelain | 12 |



*Julia Van Helden, Wellington: Relating,
Glazed and China-painted Porcelain*

CONDITIONS OF SALES

At least 20% deposit is required to secure purchase of any item, the full balance due when the item is collected at the end of the exhibition.

A payment or deposit is not refundable nor transferable.

*Payments must be made in New Zealand currency or by cheque payable to **GOVETT-BREWSTER ART GALLERY**. Mark cheques **NOT NEGOTIABLE**.*

On opening night only, an intending buyer must collect the sales ticket, bearing the number of the item being purchased, from a sales person in the exhibition area. This ticket is then to be shown at the sales desk in the foyer in order that the purchase be registered in the sales book and payment be received.

PURCHASERS

Please collect purchased pots from the Gallery from Monday, 21 November to Wednesday, 23 November, 10.30 am - 5 pm.

