

NZ Society of Potters Inc.
19th National
Potters Exhibition
1976



**NZ Society of Potters Inc.
19th National
Potters Exhibition
1976**

**Canterbury Society of Arts
66 Gloucester St
Christchurch**

24th ~ 31st Oct





Acknowledgments

The New Zealand Society of Potters Inc., wish to thank the following organisations and all those who have so willingly given assistance towards the 19th National Potters Exhibition

L. D. Nathans 47-51 Fort St Auckland
A. J. Whites 185 High St
Cellar Ghost Cellars 157 Colombo St
Denys Hadfield Studios Artist Quarter 38 Oxford Tce
The Navajo 91d Riccarton Rd
F.A.W.E. Crafts 11 Victoria St
Several Arts 809 Colombo St
The London Bookshop (NZ) Ltd 704 Colombo St
Leisure Craft Centre 88 Worcester St
The Capricorn 142 Gloucester St
Upstairs and Downstairs Gallery 173 Manchester St
Gallery 204 204 Fendalton Rd
Alicat Gallery 52 Jervois Rd Auckland



Foreword

Interest has grown so much in the purchase of pots of excellence by official bodies such as the Ministry of Foreign Affairs, Department of Internal Affairs and Museums and Art Galleries, that the N.Z. Society of Potters has had to institute a policy of buying the best pots whenever available.

These National Exhibitions are a prime source, but purchases are made from most exhibitions where possible, and from all potters — not just Society Members. Society representatives in each area are able to purchase pots to add to the numbers required. Pots are also wanted for exhibitions overseas, and an increasing number of these are sought.

All this is an indication of the firmly established interest in and high regard for the work of N.Z. potters. Overseas students are increasingly asking for apprenticeships or for periods of work with established potters.

The Annual Exhibition still seems to be the main venue to show the varied work of potters throughout the country, and the means whereby potters gather together for all the varied and necessary reasons of communication and exchange of ideas.

The public has the task of assessing its approach to the work shown in such an exhibition — whether it is in the search for something continually 'new' from a potter, or whether in the quiet assessment of standards and skills maintained and advanced in a field of work of the potters own choosing.

Peter Stichbury
President. N.Z. Society of Potters

The Arabia Pots

To most of us the name Arabia conjures up pictures of teapots, cups & saucers and cookware of high technical and aesthetic standards. Products that serve their purpose — serve man — as effectively as possible, and are beautiful. However, the work exhibited here is from Arabia's Art Department.

Although the art and design departments are separate, this factory believes that it is one of the responsibilities of industry to provide the artist with vehicles of expression. In this way he is given full freedom to develop his technical possibility. The factory has an entire floor devoted to the art department. Here leading Finnish potters have their own studios and produce highly individual and original pieces.

We may wonder why they don't work on their own as N.Z. potters do. Warmth and space have something to do with it. The severe Finnish winter. Devastations of war.

Individual houses in the cities are only for the well-to-do. The apartments, though cleverly designed, are too small to take a kiln or wheel. Also, the ground is frozen for many months and the winters long and dark, so perhaps working among others provides a more stimulating and enlivening atmosphere.

This department also invites leading potters from other countries to participate. These guests have transmitted something of the English potters craft, Japanese tradition, refined Scandinavian workmanship, rich Hungarian decoration, and Finnish sculptural form. There is no doubt that this prevents artistic stagnation.

The Arabia Art Department has developed into a kind of cultural institution where the artists are guaranteed total freedom of artistic experimentation in ceramics, backed by the technical know-how, assistance and equipment of the factory.

PAUL ENVALDS

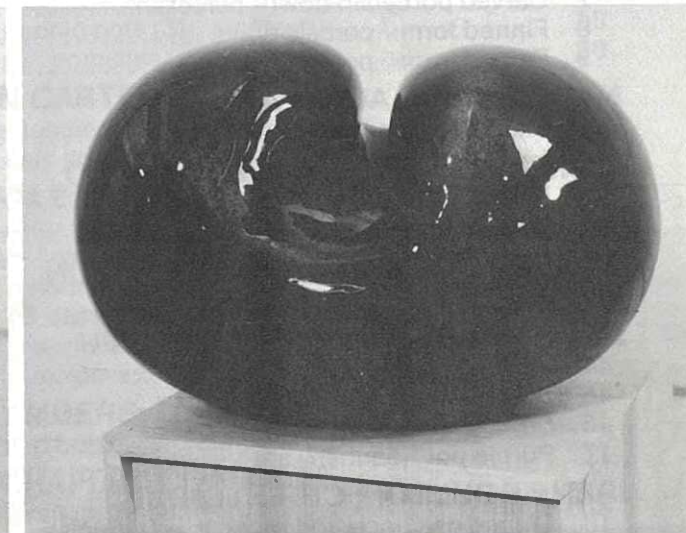
A	Vase	\$ 64
B	Vase	76
C	Ceramic sculpture "Kidney"	122
D	Ceramic sculpture "Egg"	153
E	Ceramic sculpture	149

FRANCESCA MASCITTI-LINDH

F	Floor dish with handles	386
G	Vase "Birds nest"	40
H	Bowl	191



J
Francesca Mascitti — Lindh



C Paul Envalds

I	Ceramic sculpture "Cross"	148
J	Vase	148
HELJÄ LIUKKO-SUNDSTRÖM		
K	Wall plaque "Corner"	248
L	Wall plaque "Simsalabim"	314
M	Wall plaque "Surrealistic still life"	479
N	Wall plaque "Still life"	425
O	Wall plaque "Doll"	399

NZ Society of Potters Inc.
19th National Potters Exhibition

Exhibitors

BARRY BALL; FOXTON

1 Crock stoneware.....	\$ 38
2 Bowl stoneware.....	7
3 Teaset 8 piece stoneware.....	38
4 Set 2 bowls porcelain.....	10

NOLA BARRON; CHRISTCHURCH

5 Carved porcelain bowl porcelain.....	36
6 Carved porcelain bowl porcelain.....	36
7 Carved porcelain bowl porcelain.....	36
8 Finned form porcelain.....	36
9 Finned form porcelain.....	36

NANCY BECK; AUCKLAND

10 Slab branch bottle stoneware.....	16
--------------------------------------	----

JANE BEVERLEY-SMIŠEK; TE HORO

11 Platter stoneware.....	28
12 Bowl stoneware.....	24

DOREEN BLUMHARDT; WELLINGTON

13 Banner stone stoneware.....	20
--------------------------------	----

ANNEKE BORREN; PARAPARAUMU

14 Flower sphere stoneware.....	32
15 Set of 2 spheres stoneware.....	65
16 Set of 2 purple pots earthenware.....	60
17 Purple pot earthenware.....	30

IRENE BOULTON; CHRISTCHURCH

18 Glazed necklace, red reversible turquoise earthenware.....	35
19 Glazed necklace, red reversible blue earthenware.....	N.F.S.
20 Glazed necklace, jade reversible green earthenware.....	35

NICHOLAS BRANDON; NEW PLYMOUTH

21 Red bowls, group of 3 stoneware.....	200
22 Blue bowl stoneware.....	100
23 Bottle stoneware.....	50
24 Bottle porcelain.....	35
25 Teapot porcelain.....	30

BARRY BRICKELL; COROMANDEL

26 Loco boiler (with alternative stacks for warming the hands) terracotta.....	300
--	-----

ROGER BRITTAIN; AUCKLAND

27 Pot stoneware.....	\$ 50
28 Pot stoneware.....	45

ROSEMARIE BRITTAIN; AUCKLAND

29 Pair of fat birds stoneware.....	30
30 Group of 3 posy pots porcelain.....	18
31 Pair of posy pots porcelain.....	14

DAVID BROKENSHERE; CHRISTCHURCH

32 "Formation" (set of 15 pieces) stoneware.....	40
33 Set of 3 porcelain pouches porcelain.....	30

RICHARD CADNESS; AUCKLAND

34 Set cups & saucers stoneware.....	52
--------------------------------------	----

JANE CAPON; NEW PLYMOUTH

35 pF 'oles in the Snow (3) porcelain.....	45
36 Geographic pots (3) stoneware.....	30
37 Aurora porcelain.....	20

STEPHEN CARTER; NELSON

38 Cane handled teapot stoneware.....	20
39 Set of six goblets stoneware.....	30

LEN CASTLE; AUCKLAND

40 Holder for grasses stoneware.....	45
41 Trinket box stoneware.....	45
42 Dish stoneware.....	40
43 Set of 6 dishes stoneware.....	45
44 Bowl stoneware.....	80
45 Bowl stoneware.....	70

DON CHAMBERS; FEILDING

46 Paddled bottle stoneware.....	8
----------------------------------	---

ROGER CHAPLIN; COALGATE

47 Small salt glaze bottle.....	N.F.S.
---------------------------------	--------

FRAN CONQUEST; NEW PLYMOUTH

48 Split crackle vase stoneware.....	10
--------------------------------------	----

BRIAN COOKE; RANGIORA

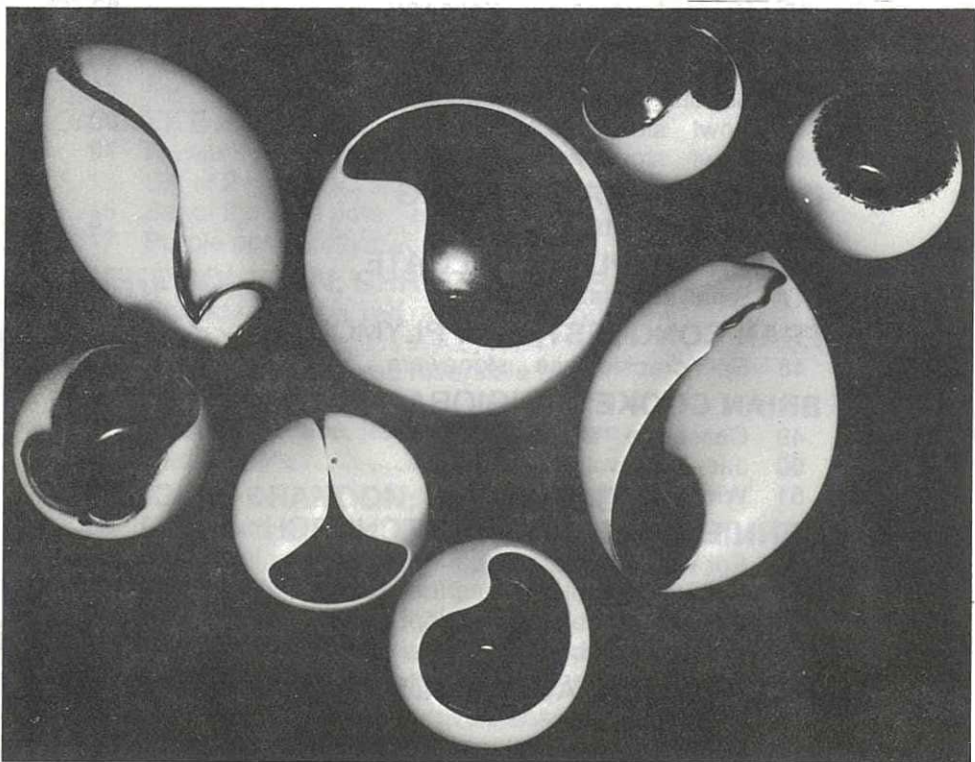
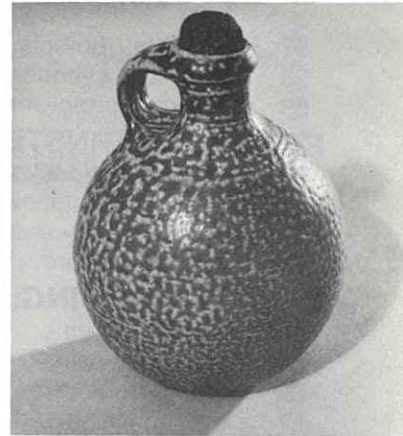
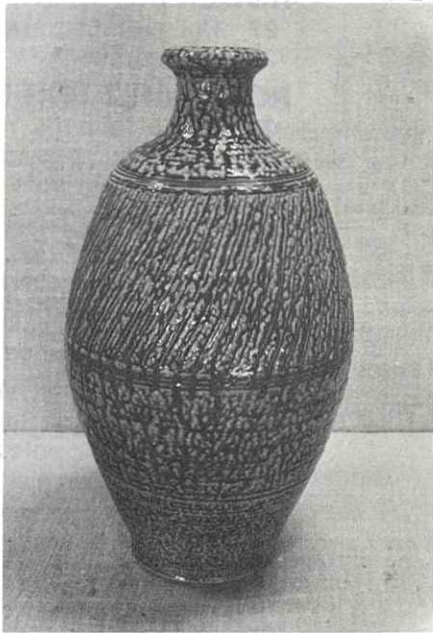
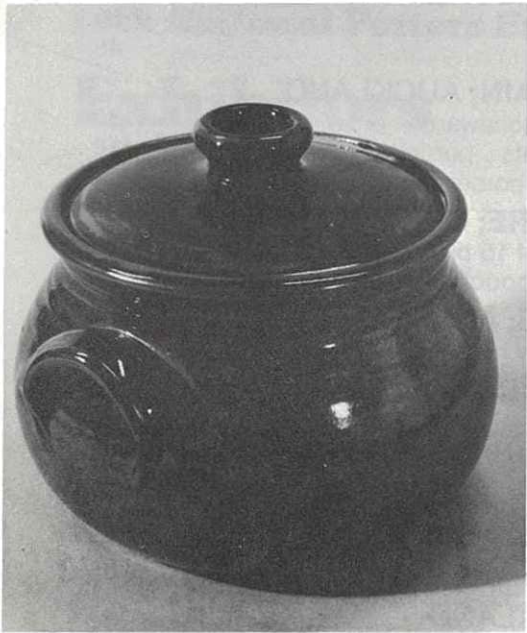
49 Casserole stoneware.....	25
50 Jar stoneware.....	30
51 Wine set stoneware.....	60

JENNIE de LANGE; CHRISTCHURCH

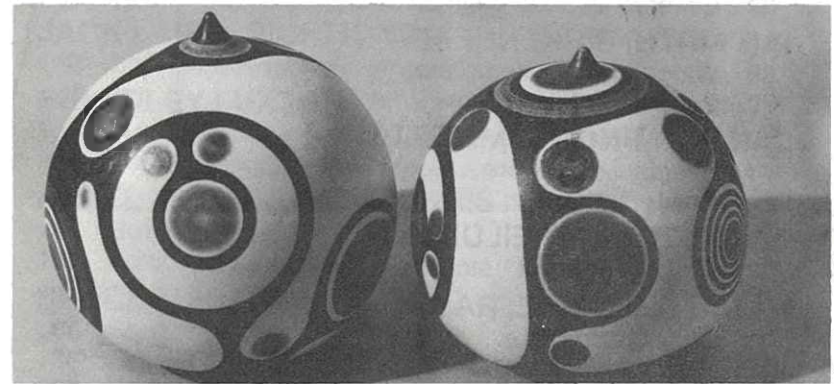
52 For wall or tabletop earthenware.....	250
53 For wall or tabletop earthenware.....	200
54 For wall or tabletop earthenware.....	200
55 For wall or tabletop earthenware.....	200

DORIS DUTCH; AUCKLAND

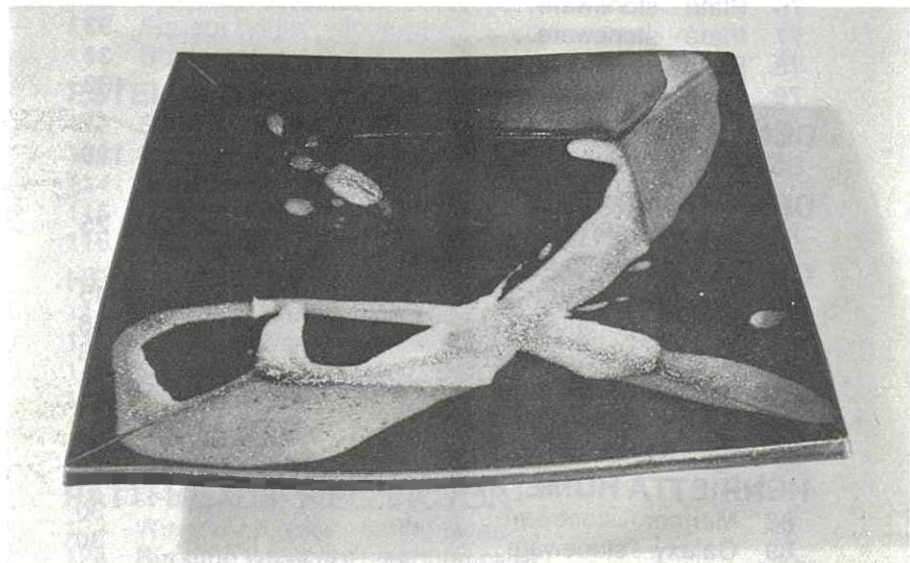
56 Trinket box porcelain.....	25
-------------------------------	----



Leo King



15 Anneke Borren



107 Bruce Martin

57	Cut bottle porcelain	\$ 18
58	Pair of torn cylinders porcelain	38
59	Cut form proto-porcelain	14

FREDERIKA ERNSTEN; CHRISTCHURCH

60	Tall bottle stoneware	20
61	Wine bottle stoneware	18
62	Teapot stoneware	20
63	Bowl stoneware	28

LAWRENCE EWING; CHRISTCHURCH

64	Jar stoneware	250
65	Bowl stoneware	60
66	Bottle stoneware	29
67	Covered jar stoneware	30
68	Covered jar stoneware	30

IAN FIRTH; BIRKENHEAD

69	Winged form stoneware	58
70	Casserole stoneware	35

JAN FLEMING; PLIMMERTON

71	Teapot stoneware	18
72	Bowl stoneware	45

JOHN FULLER; FEILDING

73	Small yellow pot stoneware	20
----	----------------------------	----

BRIAN GARTSIDE; RAMARAMA

74	Plate stoneware	33
75	Plate stoneware	33
76	Plate stoneware	33
77	Plate stoneware	33
78	Plate stoneware	36
79	Set of 17 plates stoneware	133

DENYS HADFIELD; CHRISTCHURCH

80	Bottle raku	120
----	-------------	-----

DENIS HANNA; AUCKLAND

81	Set of bowls (5) stoneware	25
----	----------------------------	----

CHARLES HOLMES; COROMANDEL

82	Slab pot stoneware	45
83	Grass pot stoneware	18
84	Grass pot stoneware	48
85	Grass pot stoneware	65
86	Nine tiles small earthenware	20
87	Nine tiles large earthenware	40

HENRIETTA HUME; PLIMMERTON

88	Mariner stoneware	30
89	Galaxy stoneware	30

STAN JENKINS; FEILDING

90	Teapot stoneware	\$ 16
91	Teapot stoneware	16
92	Coffee pot stoneware	16
93	Coffee pot stoneware	16

WAYNE JUNGHEHN; INVERCARGILL

94	Vase stoneware	10
95	Beaten vase stoneware	26

LEO KING; AUCKLAND

96	Conchoid form slipcast	65
97	Laminal form handcarved	65
98	Pair sensuous pots high fired	45
99	Pair flowing pots earthenware	37
100	Jamma pot cone 4 glaze	19
101	Deckle pot cone 4 glaze	16

JACK LAIRD; RICHMOND

102	Shallow bowl stoneware	80
-----	------------------------	----

BEVERLEY LUXTON

103	Flanged bowl — lustre porcelain	8
104	Candy dish porcelain	8

HAZEL McCAUGHERN; CHRISTCHURCH

105	Bowl stoneware	20
106	Bowl stoneware	20

BRUCE MARTIN; HASTINGS

107	Square platter stoneware	80
108	Flat serving dish stoneware	35
109	Box stoneware	25
110	Square bottle stoneware	45
111	Bottle stoneware	45

ESTELLE MARTIN; HASTINGS

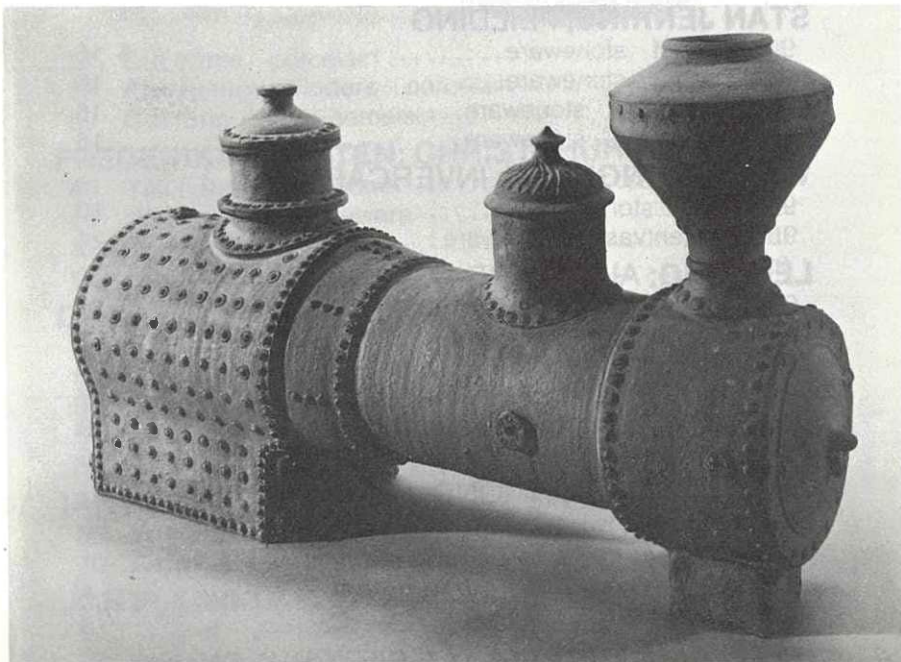
112	Set 4 soup cups & saucers stoneware	20
113	Set dinner plates stoneware	60
114	Branch pot stoneware	40
115	Branch pot stoneware	40
116	Bowl stoneware	40

HELEN MASON; EAST CAPE

117	Clay landscape stoneware	20
118	Clay landscape stoneware	20
119	Clay landscape stoneware	20
120	Clay landscape stoneware	20
121	Clay landscape stoneware	15
122	Clay landscape stoneware	15

PATTI MEADS; WELLINGTON

123	Winged cylinder earthenware	18
124	Bursting small pot earthenware	12



42 Len Castle

125 Textured bowl high fired earthenware. \$ 30

VICTOR MIDDLEMISS; INVERCARGILL

126 Five bottles high fired earthenware 45

CHESTER NEALIE; CASTOR BAY

127 Crock saltglazed stoneware 110

128 Bottle saltglazed stoneware 140

129 Teapot saltglazed stoneware 18

130 Fluted bowl saltglazed porcelain 22

131 Moth box saltglazed porcelain 30

132 Pair poison bottles saltglazed porcelain 40

ROSEMARY PERRY; CHRISTCHURCH

133 Lidded porcelain jar 1 porcelain 22

134 Lidded porcelain jar 2 porcelain 22

135 Small porcelain bowl porcelain N.F.S.

136 Porcelain plate porcelain 12

JULIET PETER; WELLINGTON

137 Globe pot trio (3) stoneware 25

MIREK SMIŠEK; HOROWHENUA

138 Tall grass bottle saltglaze stoneware 300

139 Wine bottle saltglaze stoneware 70

140 Vase saltglaze stoneware 65

141 Bowl saltglaze stoneware 30

142 Set of 3 bowls saltglaze stoneware 50

LYNN SPENCER; OKATO

143 Teapot stoneware 25

144 Casserole stoneware 28

145 Honey pot stoneware 8

146 Honey pot stoneware 8

PETER STICHBURY; AUCKLAND

147 Toureen and 12 bowls stoneware 95

148 Trinket box stoneware 18

149 Trinket box stoneware 21

150 Platter stoneware 75

151 Platter stoneware 50

152 Platter stoneware 45

GRAEME STORM; AUCKLAND

153 Pot, incised decoration stoneware 180

154 Pleated box stoneware 30

155 Blue box stoneware 30

156 Bottle, incised decoration porcelain 40

157 Bottle, glaze inlay porcelain 40

158 Bowl, blue & white porcelain 28

MARIA THOMSON; DUNEDIN

159 Six wine cups stoneware 30

DONALD THORNLEY; AUCKLAND

160 "GET AWAY" clay conceptual..... \$ 60

WARREN TIPPETT; COROMANDEL

161 Vase stoneware..... 45

162 Vase stoneware..... 55

163 Lizard vase stoneware..... 65

164 Blue lizard vase stoneware..... 60

REX VALENTINE; CHRISTCHURCH

165 Teabowl stoneware 25

ARIE VAN DYKE; SILVERSTREAM

166 Bowl stoneware..... 65

DENISE WELSFORD; CHRISTCHURCH

167 Jar stoneware 40

168 Casserole stoneware..... 25

169 Pair ash glazed bottles stoneware 22

PETER WILDE; PALMERSTON NORTH

170 Casserole stoneware 25

JOAN WILEY; WELLINGTON

171 Winter, 3 pots porcelain 18

172 Winter rose porcelain..... 10

PURCHASES

Pots to be collected on Monday Nov. 1st before 4 p.m.

Whilst in Christchurch you might like to visit

Denys Hadfield Studios

Artist Quarter 38 Oxford Tce

F.A.W.E. Crafts

11 Victoria St

Wood Sculpture by Pat Mulcahy, pottery, silver jewellery

The Capricorn

142 Gloucester St

Exclusive handcrafts

Leisure Craft Centre

88 Worcester St

craft supplies, handspun articles.

spinning wheels, pottery, sheepskin products, souvenirs

The London Bookshop (N.Z.) Ltd

704 Colombo St

Several Arts

809 Colombo St (near Town Hall)

Specialising in crafts and pottery from all parts of N.Z.

The Navajo

91d Riccarton Rd

Arts and Crafts Boutique

Gallery 204

204 Fendalton Rd Near Clyde Rd Corner

N.Z. Handcrafts, many leading Potters features

Upstairs and Downstairs Gallery

173 Manchester St Corner Cashel-Manchester Streets

Crafts and Pottery

The N.Z. Society of Potters Inc.

President Peter Stichbury
Vice President Ruth Court
Secretary Roger Brittain
Auckland Howard Williams
Manawatu Stan Jenkins
Wellington Mirek Smisek
Canterbury Lawrence Ewing
Otago-Southland Beryl Jowett

Exhibition Committee

Selectors Chester Nealie
Estelle Martin
Luit Bieringa
Chairman Peter Dawson
Secretary Treasurer Howard Egan
Accommodation Nola Barron
Organiser Ann Davie
Display David Brokenshire
Publicity Hans Zylstra
Catering Marie Dawson
Packaging Bruce Turner
Ways & Means Valerie Lammiman
Printing Gennie de Lange
Symposium Rex Valentine
Transport Sally Connolly
A.G.M. Lawrence Ewing

Catalogue design Martin Hermans
Photography & Layout Murray Hedwig
Catering Halswell Pottery Group
Ellesmere Pottery Group
Bishopdale Pottery Group
Mt. Pleasant Pottery Group
Rangiora Potters



