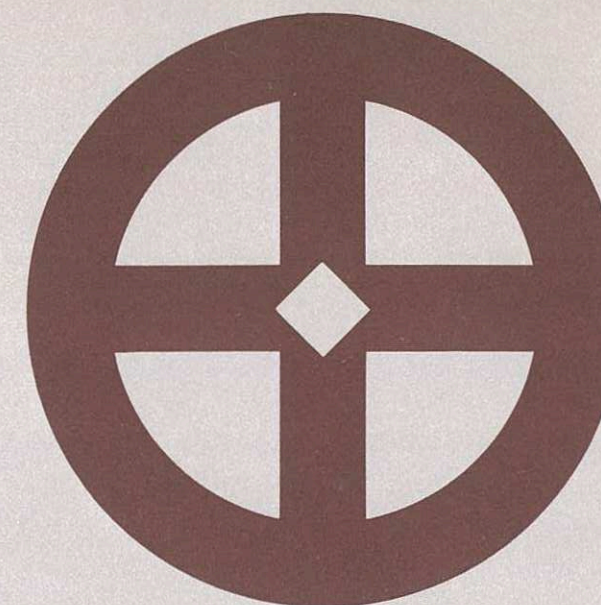




The N.Z. Society of Potters Inc.

**17th National
Potters Exhibition
1974**



The N.Z. Society of Potters Inc.

17th National Potters Exhibition 1974

**In the Auckland War Memorial
Museum Exhibition Hall
Sunday 27th October to Tuesday
5th November • Closes 5p.m.**

**Monday • Saturday 10a.m. to 5p.m.
Sunday 11a.m. to 5p.m.**

"Of all man's arts, ceramics deals most directly with earth, water, air and fire — those elements which the ancients considered the essentials of our world."

DANIEL RHODES; Preface; "Kilns: Design, Construction and Operation."

All four elements are incorporated into the symbol for the 17th New Zealand Potters Exhibition. The symbol for each element, shown below, is based on that used in the middle ages.



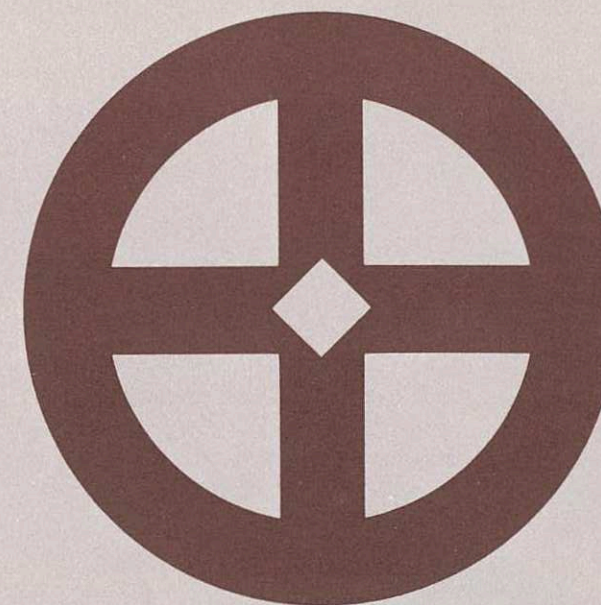


Acknowledgments

The New Zealand Society of Potters Inc., wish to thank the following organisations and all those who have so willingly given assistance towards the 17th National Pot-
ters Exhibition.

The Auckland War Memorial Museum
Council Director and Staff.

Auckland Savings Bank.
BP New Zealand Ltd.
C.C.G. Industries Ltd.
Crown Lynn Potteries Limited.
Crum, Brick, Tile & Pottery Co. Ltd.
Fletcher GKN Limited.
Fletcher Holdings.
N.Z. News Ltd.
Radiance Engineering Ltd.
Seaboard Joinery Ltd.
Smith & Smith Limited.
Winstone Ltd.



Foreword

The number of potters — full and part-time continues to grow in this country. This reflects the growing desire of many to return to basic creative activities which enables them to live in a fashion which suits their own particular needs, and gives them a relationship between work and living which, though hard to define, is satisfying, enriching and rewarding.

Not all these potters have the desire to become members of this Society. Perhaps this is a good thing, for the New Zealander was always an independent thinker. Perhaps the Society satisfies the very human needs of many for contact with others, support for individual ideas, the interchange of ideas, and the need to compare development against the skill, techniques, and creative ideas of others.

These National Exhibitions have adhered to a fairly set format in the past, in that each potter was allowed to submit a set number of pots which were then judged by a selection panel. The selected pots became the exhibition. This year it is different. Each member of the Society has been asked to submit up to four pots, or sets of pots, for exhibition, and there has been no selection.

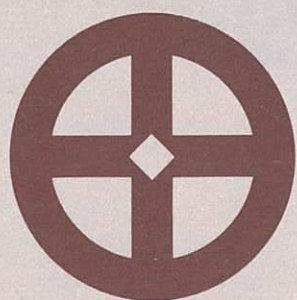
Perhaps this new approach is more democratic — for the question has been asked

— 'Why should a potter whose work has been selected for entry to membership to the Society, have his work re-selected year after year for each National Exhibition?' The result indeed might well show a truer state of the pottery in this country, as the potter is now responsible for the final selection of his own work. The whole exhibition will be viewed with interest.

One aim of the Society is to have all members participate in such exhibitions, and the new format might well aid in the realisation of this aim — that is if the membership doesn't become so large that the exhibitions become too large to mount. The purpose of the Society, however, is not just to mount one large exhibition each year, but to be more flexible in outlook. One view is that smaller and more diverse exhibitions would suit potters best. These could take the form of travelling exhibitions around New Zealand — exhibitions which included the work of Society members, overseas collections, and cover the interchange of work from centre to centre.

This is already beginning to happen, and the more diverse the activities of the Society become, the more there is to interest each member, and perhaps aid in his development and that of potters in New Zealand generally.

Peter Stichbury
President, N.Z. Society of Potters



Experience and experiment

Only with the experience of many years do we discover some of the reasons which cause pots to fail during firing and refuse to remain as attractive as they were when wet on the wheel.

If, when we set ourselves up to judge beginners who are just discovering these problems, our judgement is too severe, we may lose the more subtle pots, thus encouraging the brash short-cuts to success, such as moulded ware, decorated ready made and commercially prepared glazes. I think studio potters should complete the making of a pot, mix the glazes and fire their own ware before exhibition standards can be considered. Slip casting and press moulding are unacceptable to me.

Daniel Rhodes writes in his book "Tamba Pottery":

"Pottery as an art carries a weight of tradition which sometimes stifles growth and creativity. But looking to past traditions for inspiration, rather than models, can refresh our vision and put our own problems into perspective."

There have been a lot of changes in pottery since I started in the nineteen forties. The main difference is that too much emphasis on techniques is overshadowing the spontaneous warmth and charm which should be apparent in domestic ware. The definition of terms is dominating the sculptured pot, the argument being — "Is it a pot, or is it sculpture?" — surely this does not matter.

Originality of form is often overlooked and even dismissed in this country for a year or two, if similar trends haven't been seen overseas, or in overseas publications.

However, after being on show for a period of time they usually break through the acceptance barrier.

Last year, exhibitions showed a much greater awareness of the qualities of both glazed and unglazed pottery. These contrasts in an exhibition can stimulate and keep up the interest.

May I advise much more experimenting in the future.

PATRICIA PERRIN
(With a little help from my friends)

Col Levy Guest Exhibitor

Born 1933, Sydney, Australia.

1951-52 Sydney Teachers' College (Industrial Arts Teacher Training; 1951-52 studied pottery at the National Art School, E.S.T.C.; 1957 Lecturer at the Ceramics School, National Art School, E.S.T.C.

1957 resigned from the N.S.W. Dept. of Education in order to do year of workshop training in 1958 with Ivan McMeekin at Sturt Pottery, Mittagong; 1963 established his permanent pottery at Bowen Mt., via Grose Vale in the Windsor District, N.S.W. Now works full-time as an individual artist-potter, with the exception of two full days a week when he lectures at the Ceramics School, National Art School, E.S.T.C., Sydney.

1965 Commonwealth Festival of Arts, London, Design Centre; 1969 Crafts of the Modern World, New York; 1969 International Craft Exhibition, Stuttgart; 1970 Australian Pavilion, Expo 70, E Osaka, Japan; 1972-73 "Craft 70's," Travelling Exhibition arranged by the Art Gallery of N.S.W.

1972-73-74 Committee Member on the Ceramics Certificate Course Advisory Committee for N.S.W.; 1974 Committee Member for the Education and Training Committee of the Crafts Board (Australian Council for the Arts).

1974 Travelling Exhibition Australian Ceramics arranged by the National Gallery of Victoria; 1973-74 following personal invitation of Yu Fujiwara, obtained Crafts Board Grant for 6 months in Japan working at Bizen; 1974 awarded Gold Medal for International Competition for Ceramics Faenza, Italy.

Experience involves 17 years of workshop experience; 11 years of teaching experience in Industrial Arts with the N.S.W. Dept. of Education; served on syllabus Sub-Committee for Ceramics for the Wyndham Report on Education in N.S.W. and also as First Examiner and Assessor in these strands; has conducted

2 Summer Schools in Pottery for the University of New England with Japanese potter Shiga Shigeo as co-tutor; conducted Summer Schools in Ceramics for 3 years for Art Teacher Conversion students for the N.S.W. Dept. of Education.

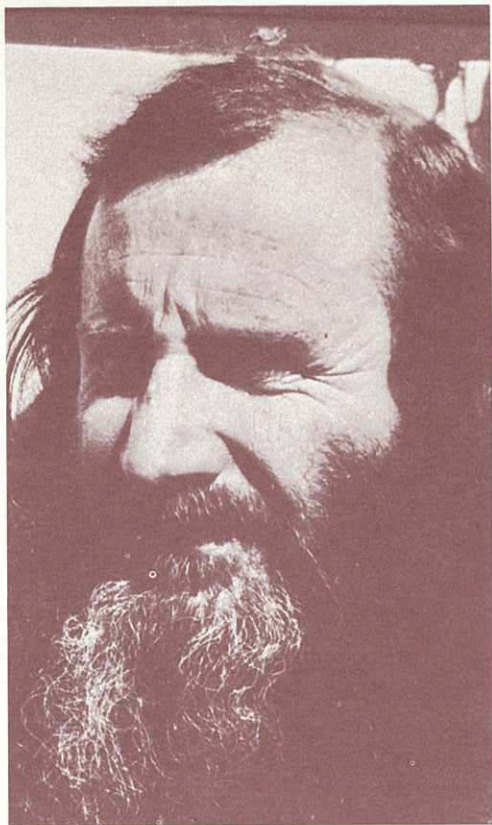
Has belonged to the Potter's Society of Australia (one of its first dozen members), the Crafts Council of Australia, the World Crafts Council, etc.; was member of the Steering Committee for Crafts Council of Australia, served as Committee Member for the Potters' Society of Australia, etc.

Work is represented in all major public galleries and collections in Australia, has had numerous one-man and group shows in all major galleries in Australia.

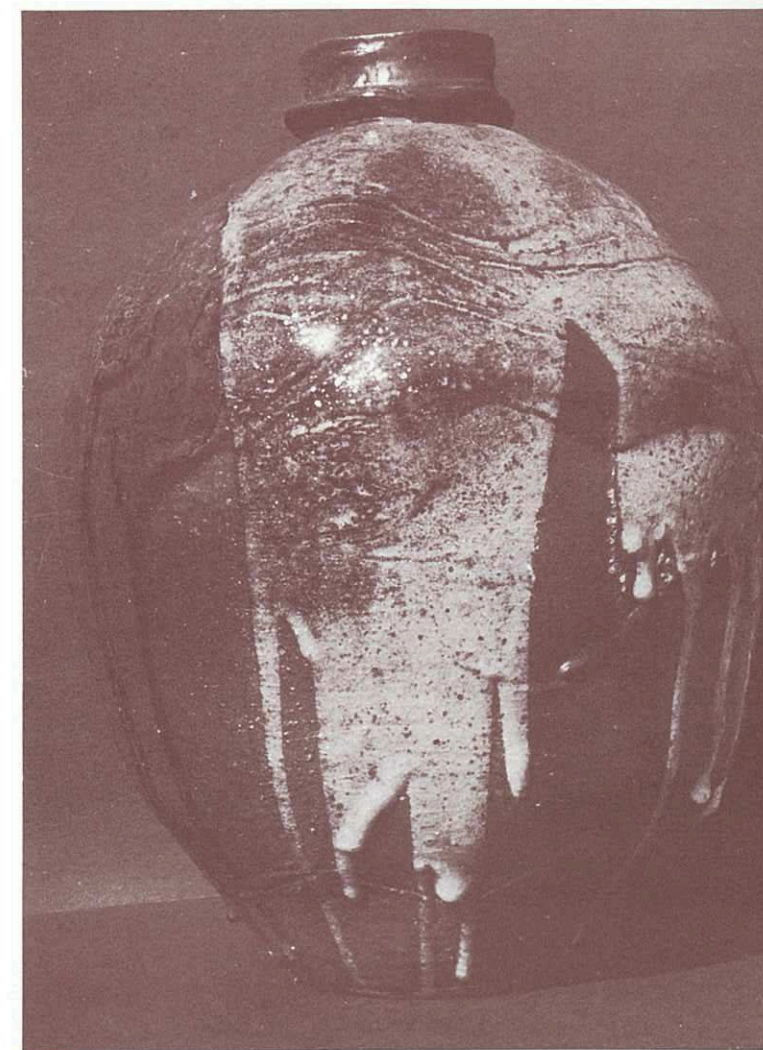
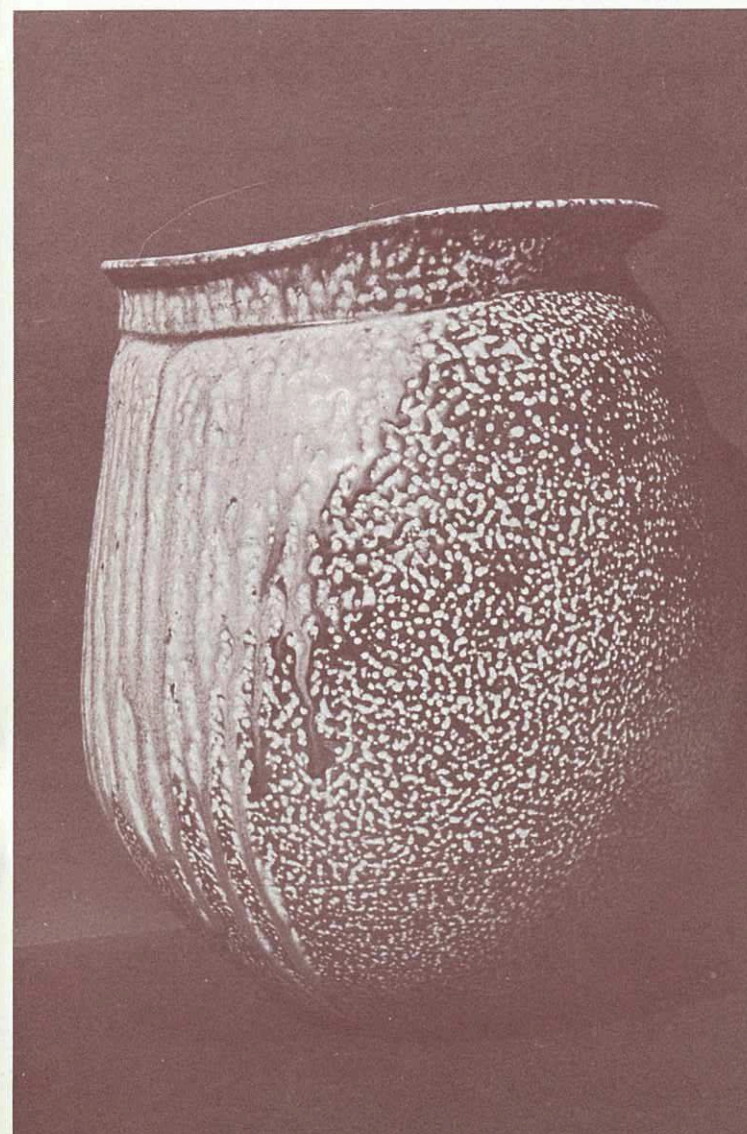
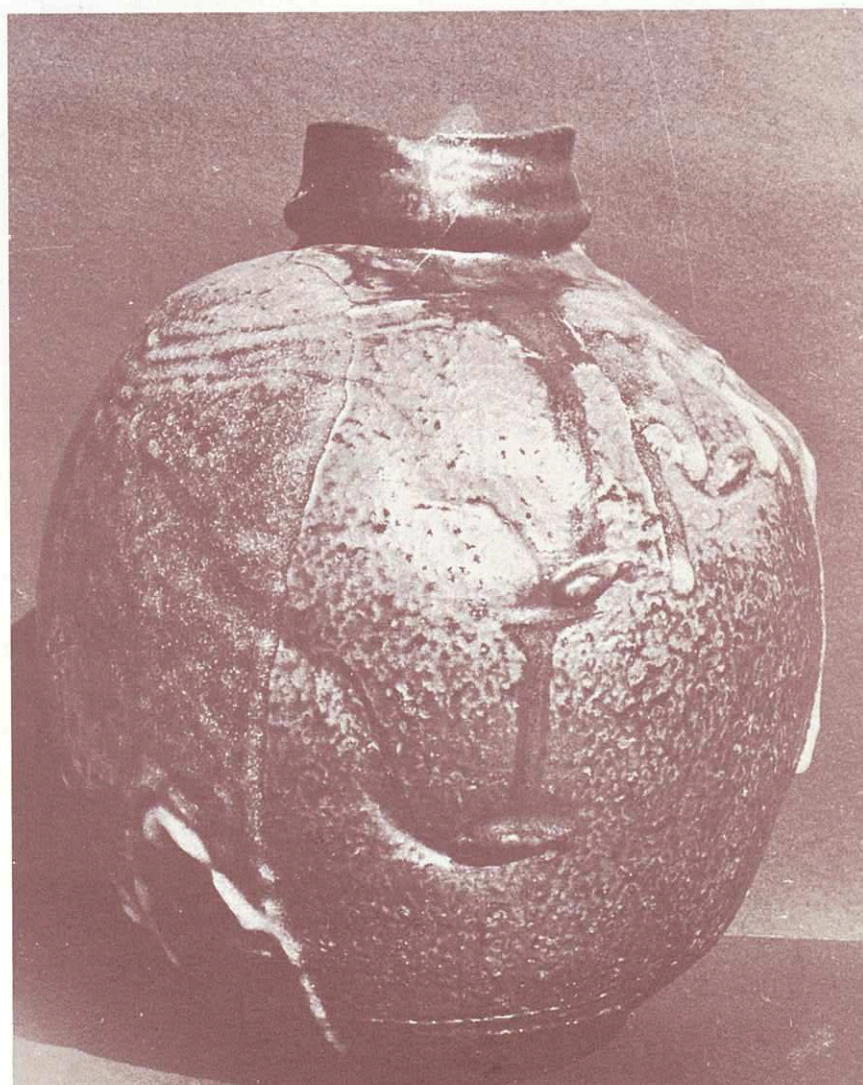
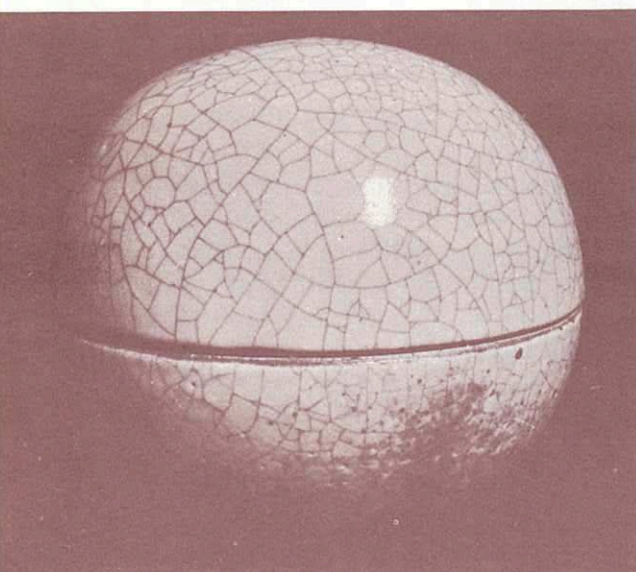
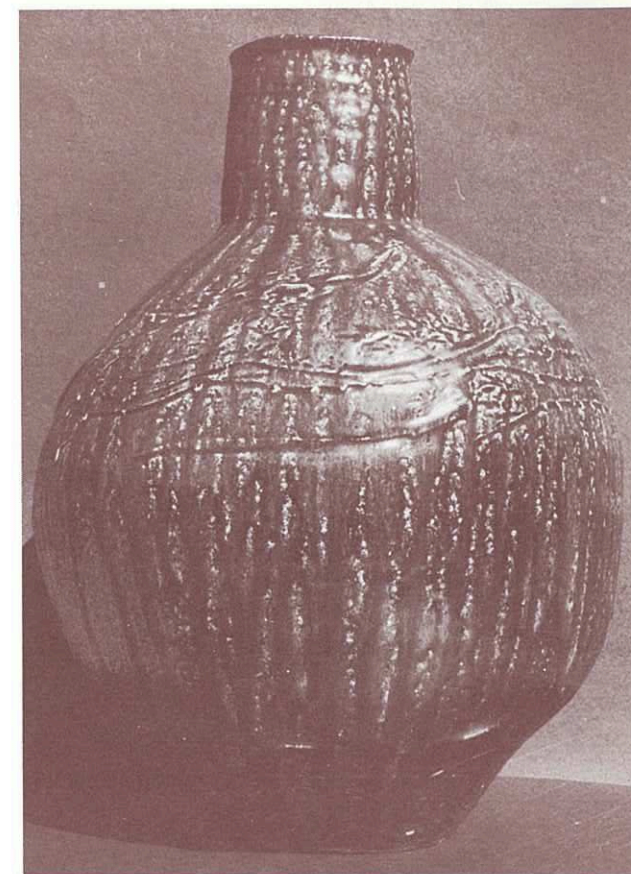
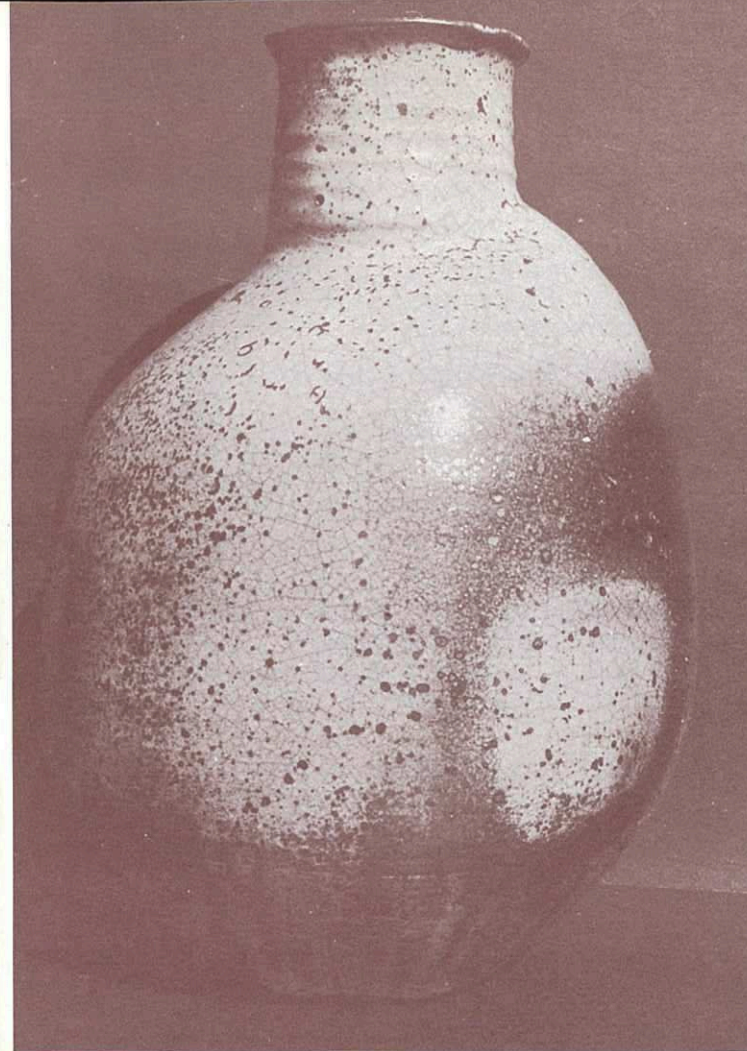
Due to Customs Regulations, these pots must be returned to Australia at the end of the Exhibition.

Purchases may be negotiated with Col Levy, via the Exhibition Sales Staff, during the Exhibition period.

- (a) Large open bowl, black wattle wood — ash glaze and salt glazeA\$250
- (b) Vase, black wattle wood — ash glaze and salt glazeA\$100
- (c) Bowl (approx. 8")A\$40
- (d) Bowl (approx. 6")A\$20
- (e) Vase (approx. 9")A\$30
- (f) Vase (approx. 5")A\$15
- (g) Vase (approx. 4")A\$10
- (h) Large Vase with feldspar glaze A\$1,000
- (i) Vase, feldspar and wood-ash glazeN.F.S.
- (j) Vase, feldspar and iron slipN.F.S.
- (k) Vase, wood-ash and salt glazed A\$400
- (l) Vase, feldspar and wood-ash glazeA\$500
- (m) Vase, feldspar and wood-ash glazeA\$400
- (n) Vase, "Shino" glazeA\$400
- (o) Teapot, "Shino"-type glazeA\$60
- (p) Six mugs, "Shino"-type glaze ...A\$60



Col Levy/Guest Exhibitor





The N.Z. Society of Potters Inc.

17th National Potters Exhibition 1974

Sales of Pots

An intending buyer must collect the sales ticket bearing the number of the item being purchased.

This ticket is then to be shown at the sales desk in order that the purchase may be registered in the sales book.

Payment to be made in full either immediately or when the item is collected at the end of the exhibition.

Payment to be made either in N.Z. currency or by cheque payable to *N.Z. Society of Potters - 17th National Exhibition*. Mark cheques *not negotiable*.

Note: Sold pots not collected will be returned to exhibitor and become the purchaser's responsibility to arrange for collection.

Purchasers and Exhibitors

Please collect purchased pots from the Exhibition Hall on *Wednesday, November 6th, Museum hours*.

GWYN ACE, NAPIER

- 1 Wine pot and six goblets, stoneware\$45
- 2 Wine bottle and goblets, stoneware \$38
- 3 Stew Pot, Stoneware\$15
- 4 Casserole, stoneware\$17

MADELEINE ALDWELL, GISBORNE

- 5 Casserole, stoneware\$10
- 6 Corked jar, stoneware\$7
- 7 Group of 3 spice jars, stoneware ..\$9

SUSAN ALLPRESS, PAPATOETOE

- 8 Storage jar, stoneware\$18
- 9 Spice set, stoneware\$10 set

ANDREW GREGORY BARRON, NELSON

- 10 Set of six mugs, stoneware\$12
- 11 Covered cheese plate, stoneware \$13
- 12 Teapot, stoneware\$14
- 13 Bowl, stoneware\$18

NOLA BARRON, CHRISTCHURCH

- 14 Landforms with river, porcelain ..\$35
- 15 Landforms, dry river, porcelain ..\$32
- 16 Landforms, porcelain\$30
- 17 Black moon, stoneware\$45

JESSIE BARROWCLOUGH, HAMILTON

- 18 Ornamental off-centre pot, earthenware\$18
- 19 Teapot, earthenware\$12
- 20 Bowl, earthenware\$7
- 21 Vase, earthenware\$4

REG BAXTER, INVERCARGILL

- 22 Wall plaque, earthenware\$20
- 23 Brown urn, stoneware\$35
- 24 Brown/green urn, stoneware\$40
- 25 Turquoise urn, stonewareN.F.S.

MARTIN BECK, TAKAPUNA

- 26 Wrapped-top bottle, stoneware ..\$25
- 27 Wrapped-top bottle, stoneware ..\$18
- 28 Wrapped top bottle, stoneware ..\$14
- 29 Wrapped top bottle, stoneware ..\$10

NANCY BECK, TAKAPUNA

- 30 Branch bottle, stoneware\$25
- 31 Branch bottle, stoneware\$25
- 32 Blossom bottle, stoneware\$16
- 33 Blossom bottle, stoneware\$21

ELIZABETH BEECHEY, CHRISTCHURCH

- 34 Seven pint hot-pot, stoneware\$25
- 35 Eight goblets, stoneware\$50

JUNE BLACK, MAIRANGI BAY

- 36 Tile panel, earthenware\$50
- 37 Group of three candle sticks, stoneware\$25
- 38 Group of two candle sticks, stoneware\$20

BETTY BLAIR, ASHBURTON

- 39 Pair of pinched form birds, stoneware\$15
- 40 Earthenware candy jar\$12
- 41 Candy jar, earthenware\$10

DOREEN BLUMHARDT, WELLINGTON

- 42 Branch pot, wheel-thrown stoneware\$200
- 43 Floor vase, wheel-thrown stoneware\$200
- 44 Bottle, slab-moulded stoneware ..\$80
- 45 Plate, wheel-thrown stoneware ...\$35

ANNEKE BORREN, PARAPARAUMU

- 46 Set of three totems, Earthenware, sculpture\$260
- 47 Flowers (6 pieces) ceramic sculpture, earthenware\$80
- 48 Appletree, ceramic sculpture earthenware\$50
- 49 Sphere, ceramic sculpture, earthenware\$25

IRENE BOULTON, CHRISTCHURCH

- 50 Brown necklace and ear rings, earthenware\$28 set
- 51 Glazed agate necklace and ear ring set, earthenware\$30 set
- 52 Mosaic "red flowers", earthenware\$50
- 53 Mosaic, "wishing", earthenware ..\$45

BARBARA BOURNE, ROTORUA

- 54 Vase with oval neck, stoneware ..\$12
- 55 Round neck vase, impressed design, stoneware\$12
- 56 Set of 3 pots, stoneware\$7 set
- 57 Set of 3 thumb twig pots, stoneware, N.F.S.

NICHOLAS BRANDON, NEW PLYMOUTH

- 58 Bowl, stoneware\$45
- 59 Large jug, stoneware\$23
- 60 Jug\$18
- 61 Wine bottle\$19

BARRY BRICKELL, COROMANDEL

- 62 Lidded crock, wood fired\$50
- 63 Fatso jug, wood fired\$45

ROGER BRITTAIN, HENDERSON

- 64 Floor pot, unglazed stoneware ..\$50
- 65 Brown floor pot, stoneware\$40
- 66 Green floor pot, stoneware\$40
- 67 Waisted floor pot, stoneware\$50

ROSEMARIE BRITTAIN, HENDERSON

- 68 Set of two birds, stoneware\$30
- 69 Bowl, stoneware\$20
- 70 Bud bottle, stoneware\$10
- 71 Set of three grass holders\$15

AUDREY BRODIE, WELLINGTON

- 72 Fish plaque 1. Stoneware\$15
- 73 Fish plaque 2. Stoneware\$15

DAVID BROKENSHIRE, CHRISTCHURCH

- 74 Anchor stone 1. Ceramic sculpture, fireclay\$100
- 75 Anchor stone 2. Ceramic sculpture, fireclay\$80
- 76 Cave for Orpheus, ceramic sculpture, fireclay\$80

- 77 Evil wind, ceramic sculpture, fireclay\$120

ISABEL BROWN, DUNEDIN

- 78 Big green plate, earthenware\$15
- 79 Platter, earthenware\$20
- 80 Six wine goblets, earthenware ...\$12

MERLE BRYNILDSEN, PAPATOETOE

- 81 Pot No.1, stoneware\$90
- 82 Pot No.2, stoneware\$90
- 83 Bowl, stoneware\$30
- 84 Pot, No.3, stoneware\$20

MARY BURR, PAKAPURA

- 85 Six mugs, stoneware\$10
- 86 Cookie Pot, stoneware\$10
- 87 Casserole, stoneware\$12

RICHARD CADNESS, AUCKLAND

- 88 Wine flagon set, stoneware\$50
- 89 Pot, stoneware\$65
- 90 Bottle\$19
- 91 Wine jar, stoneware\$23

JOHN CAMPBELL, PAKAPURA

- 92 Slab bottle, stoneware\$20
- 93 Plate, stonewareN.F.S.

MADGE CANTY, TAURANGA

- 94 Ranginui and Papa-tua-nuku 1. Ceramic sculpture\$40
- 95 Ranginui and Papa-tua-nuku 11, ceramic sculpture\$40
- 96 Platter, stoneware\$8

JANE CAPON, NEW PLYMOUTH

- 97 Pair of decorated three sided pots, stoneware\$12
- 98 Pair of beaten pots, stoneware ..\$12
- 99 Tobacco pot, stoneware\$10
- 100 Flat dish, stoneware\$6

GAIL CARLSEN, ONEWHERO

- 101 Coiled pot, stoneware\$50
- 102 Tea pot, stonewareN.F.S.
- 103 Stoppered bottle, stoneware\$12
- 103a Stoppered bottle\$12

FRANCES CARRUTHERS, REMUERA

- 104 Platter, stonewareN.F.S.
- 105 Bowl, stoneware\$18
- 106 Set of six mugs, stoneware\$12
- 107 Dessert set — one bowl, six small bowls\$25

DON CHAMBERS, FEILDING

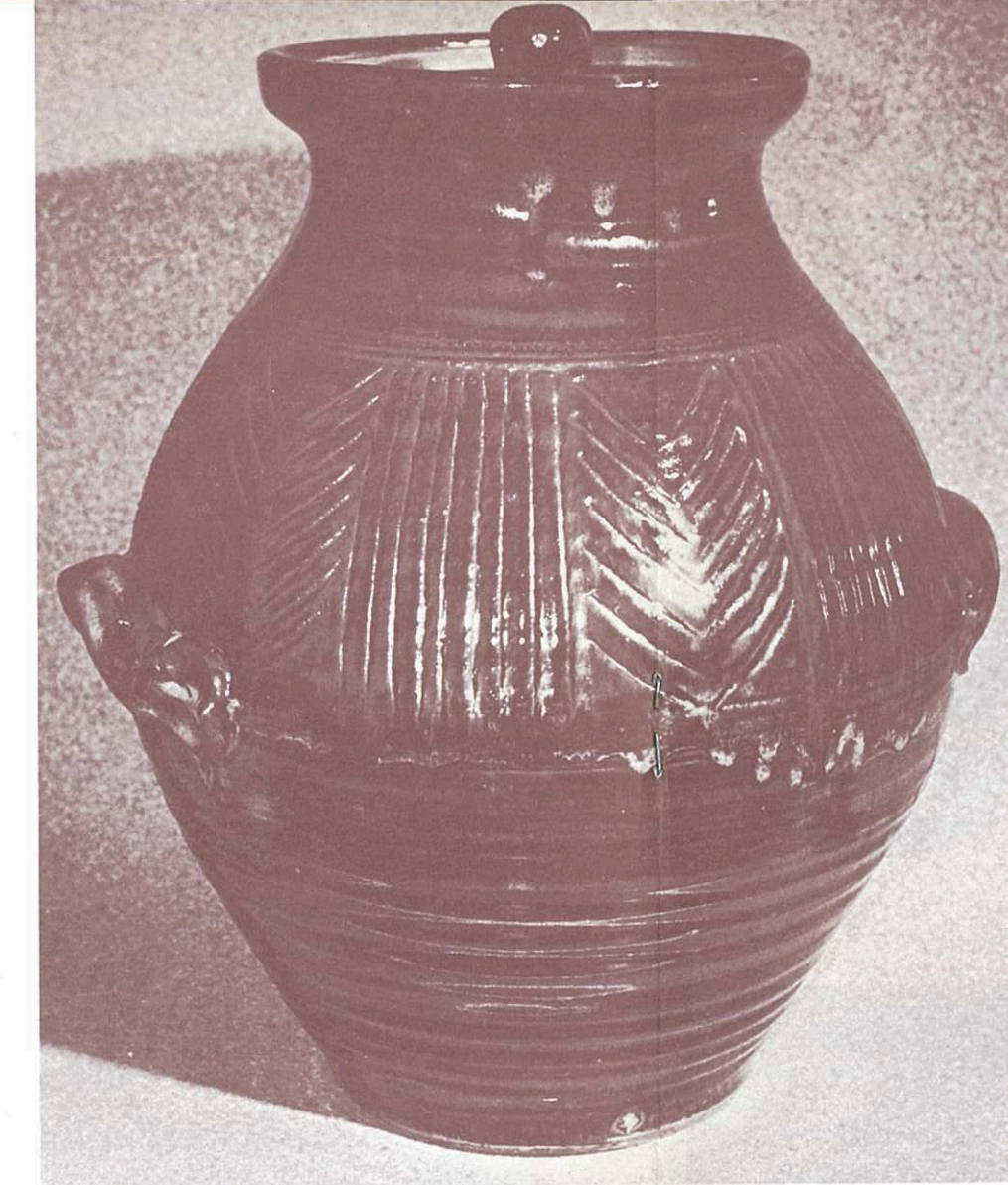
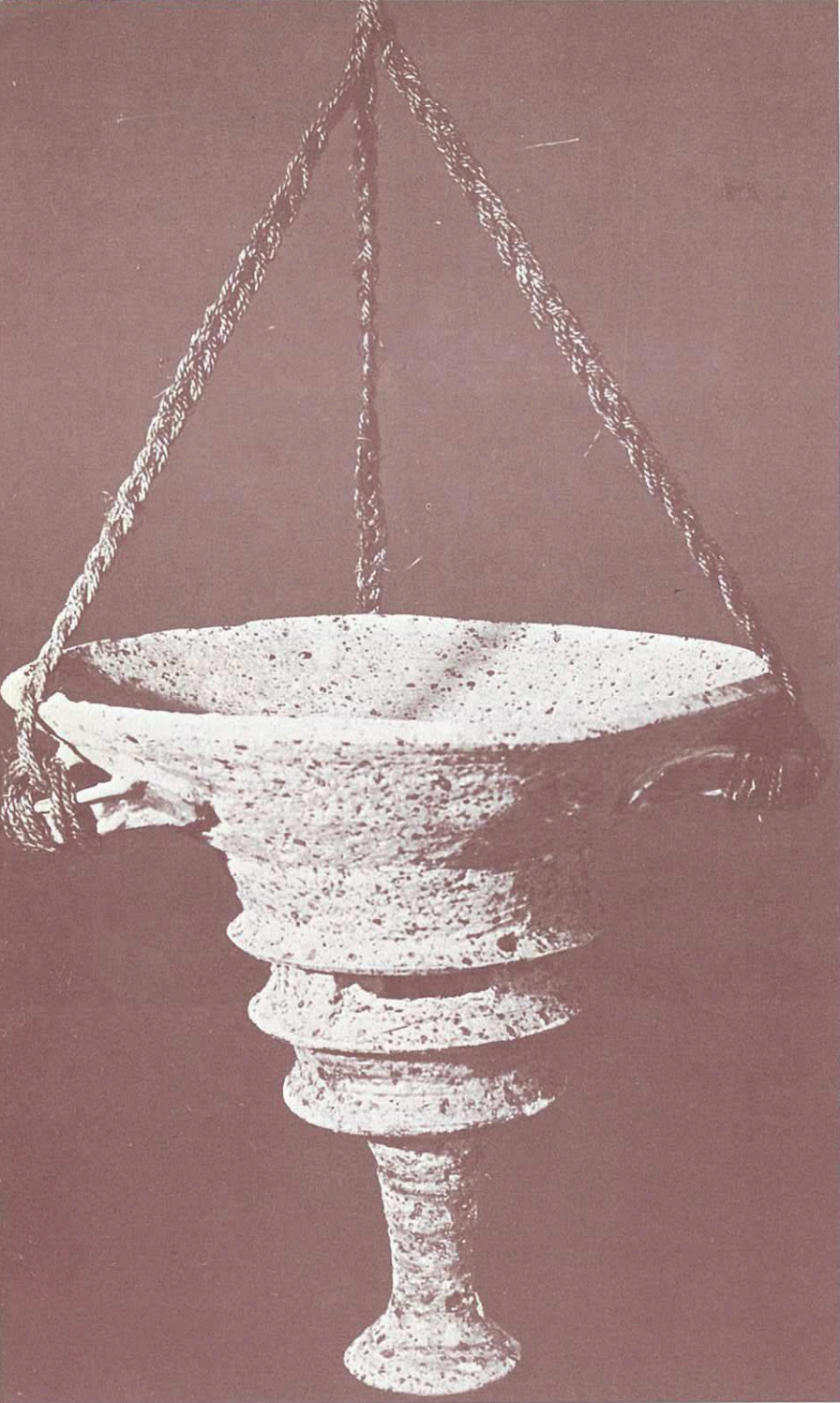
- 108 Lamp, complete, stoneware\$25
- 109 Round pot, stoneware\$16

ROGER CHAPLIN, COALGATE

- 110 Wine Bottle, stoneware\$14
- 111 Bowl, stoneware\$5

FLORA CHRISTELLER, SILVERSTREAM

- 112 Group of three bottle, stoneware \$70
- 113 Plate, stoneware\$20
- 114 Boulder pot, stoneware\$35



Yvonne Rust

Mirek Smisek

Ian Firth

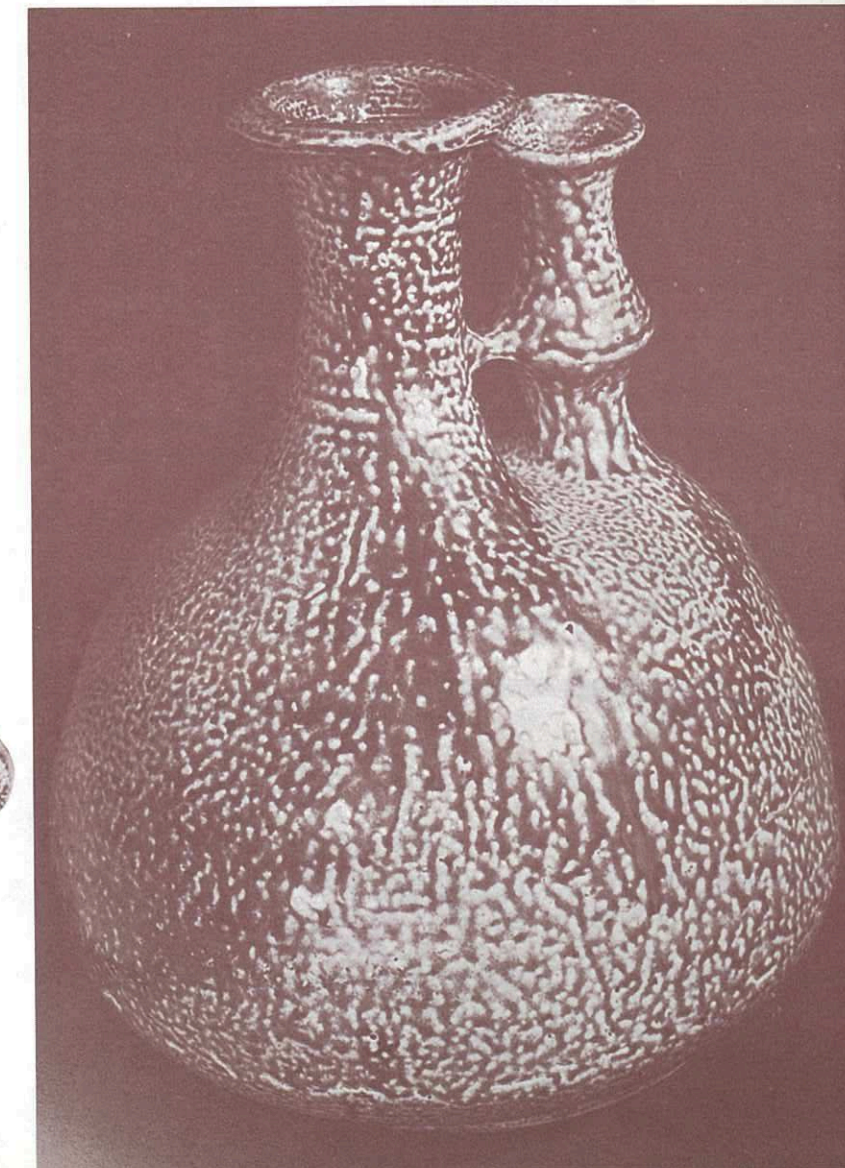
Gail Carlson

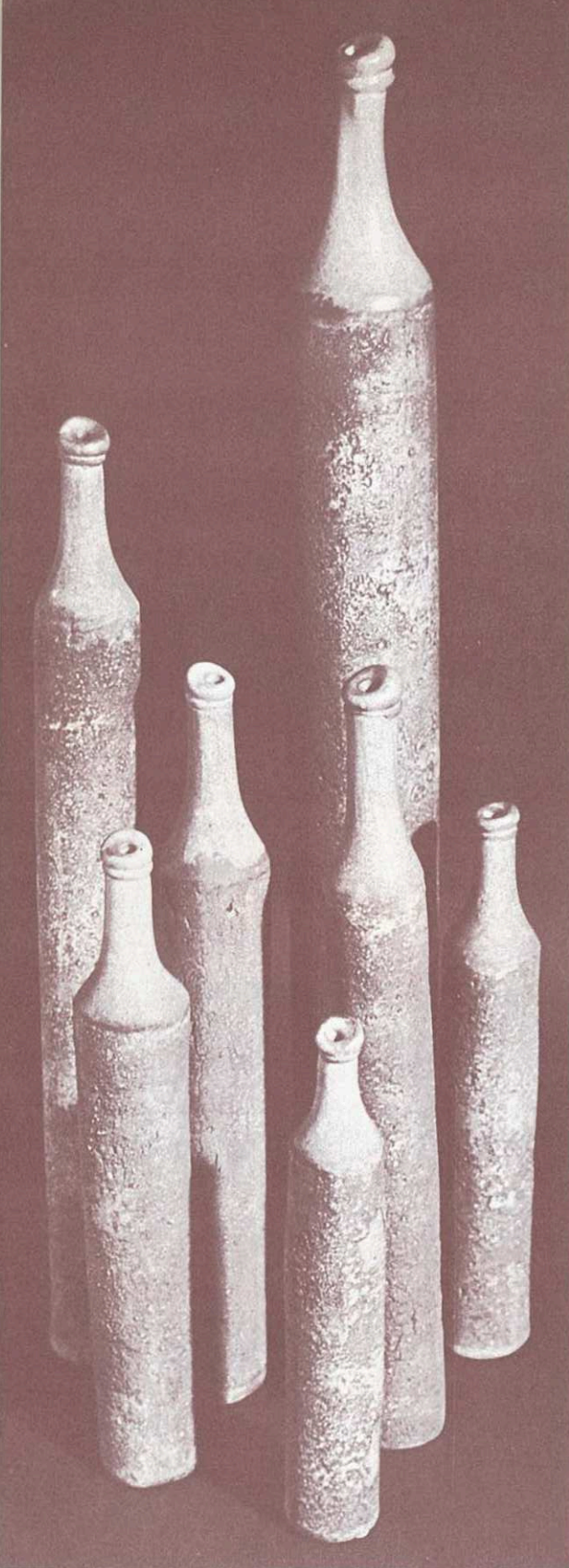


Howard Williams



Mary Hardwick-Smith

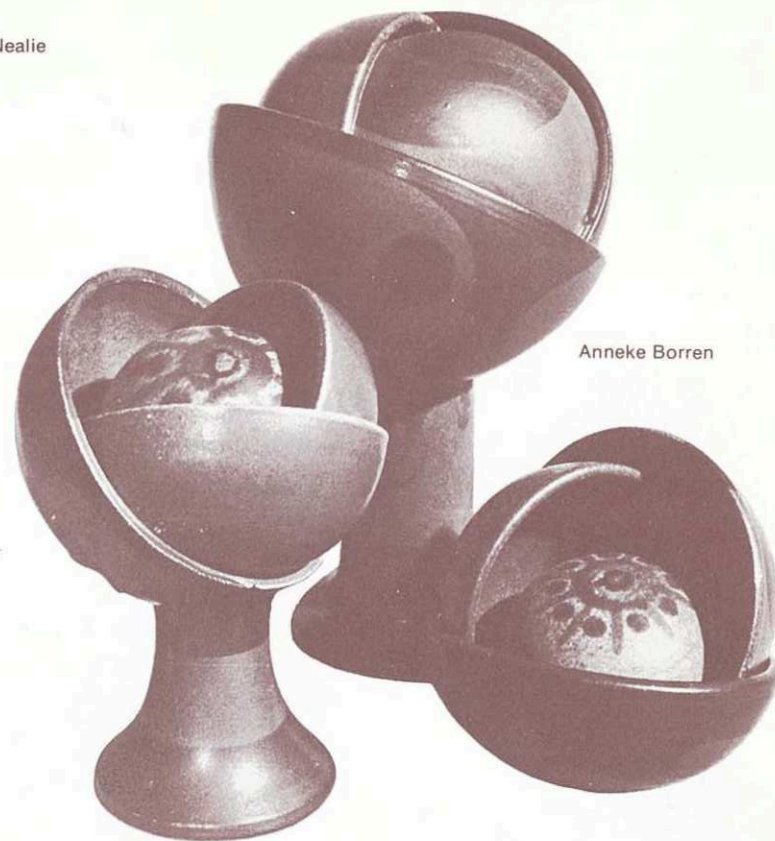




Chester Nealie

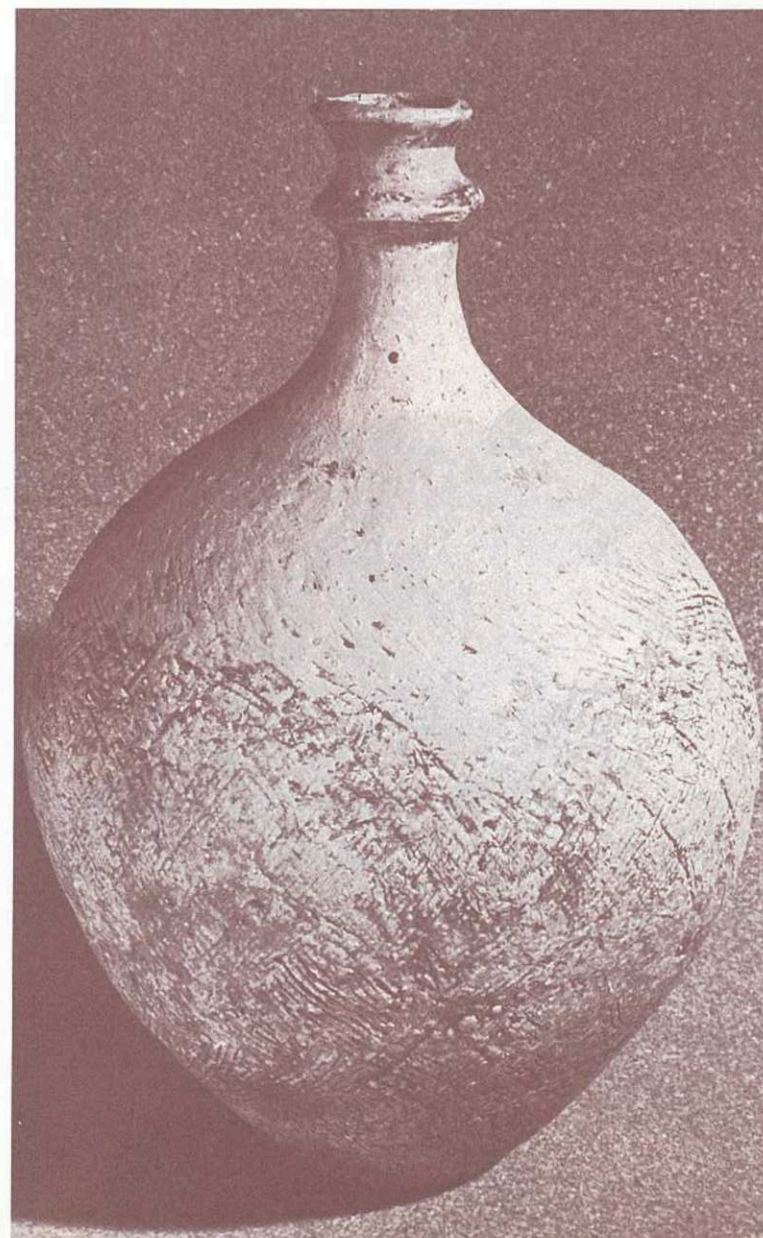


Margaret Milne



Anneke Borren

Roger Brittain



115 Group of three small pots, stoneware\$15

PETER COLLIS, AUCKLAND

116 Bowl, stoneware\$18
117 Tang jar, stoneware\$8
118 Vase, stoneware\$15
119 Wine pourer, stoneware\$7

SALLY CONNOLLY, CHRISTCHURCH

120 Stick holder, stoneware\$5
121 Stick holder, stoneware\$7
122 Stick holder, stoneware\$7
123 Stick holder, stoneware\$9

BRIAN COOKE, RANGIORA

124 Jar, stoneware\$50
125 Casserole, stoneware\$25
126 Bowl, stoneware\$22
127 Bottle, stoneware\$10

BRONWYN CORNISH, WAIHEKE

128 Stone Shoe bowl, porcelain\$40
129 Stone Shoe Bowl, porcelain\$30
130 Stone Shoe bowl, porcelain\$30
131 Stone Shoe bowl, porcelain\$25

RUTH COURT, WHANGAPAROA

132 Wine pourer and six beakers, stoneware\$30
133 Plate, stoneware\$18
134 Bowl, stoneware\$12
135 Twin bottles, stoneware\$8

ROY COWAN, WELLINGTON

136 Coffee pot,\$12
137 Cheese bell\$8
138 Two platters, porcelain\$9 pair
139 Stem bowl\$60

BETTY CUTCHER, HENDERSON

140 Lidded pot, stonewareN.F.S.
141 Vase, stoneware\$10
142 Bowl, stoneware\$15
143 Lidded pot, stoneware\$6

JENNIE de LANGE, CHRISTCHURCH

144 "Waiting", earthenware tiles\$90
145 "Teatime", earthenware tiles\$90

DORIS DUTCH, TE ATATU

146 Bowl, stoneware\$28
147 Set of six moon bowls, porcelain\$30
148 Trinket box, porcelain\$15
149 Three cut bottles, porcelain\$32

OLWYN DYKES, INVERCARGILL

150 Plate with stand, earthenware\$20
151 Bowl, earthenware\$12
152 Set of bowls (4) earthenware\$10
153 Ashtray, earthenware\$6

TOBY EASTERBROOK-SMITH, HAMILTON

154 Crock, stoneware\$25
155 Crock, stoneware\$25
156 Jug, stoneware\$12
157 Boulder pot, stoneware\$15

LORNA ELLIS, WELLINGTON

158 Stoneware and glass tile\$45
159 Stoneware and glass tile\$45
160 Stoneware and glass tile\$45
161 Stoneware and glass tile\$15

FREDERIKA ERNSTEN, CHRISTCHURCH

162 Three piece candlestick set, stoneware\$40
163 Teapot, stoneware\$25
164 Wine bottle, stoneware\$25
165 Casserole, stoneware\$25

DOROTHY EWART, SILVERSTREAM

166 Square salad tray, earthenware . \$12
167 Oval platter, earthenware\$10
168 Set of two savoury dishes, earthenware\$9
169 Set of two square dishes\$7

LAWRENCE EWING, RANGIORA

170 Teapot, stoneware\$28
171 Bottle, stoneware\$25
172 Bowl, stoneware\$20
173 Jar, stoneware\$75

MOLLY FINDLAY, GISBORNE

174 Wine bottle, stoneware\$10
175 Cylindrical vase, stoneware\$20
176 Jug, stoneware\$12
177 Four serving dishes and sauce jugs, stoneware\$15

IAN FIRTH, BIRKENHEAD

178 Parata dish, stoneware\$80
179 Moko dish, stoneware\$60
180 Kotiate dish, stoneware\$55
181 Ele-fun, stoneware\$65

PAUL FISHER, CHRISTCHURCH

182 Storage jar, stoneware\$15
183 Wine jar, stoneware\$15
184 Bowl, stoneware\$7
185 Pitcher\$48

NORA FLEWELLEN, CHRISTCHURCH

186 Lidded pot, earthenware\$6
187 Small lidded pot, earthenware\$4
188 Lidded pot, earthenware\$6
189 Lidded pot, earthenware\$6

FREDRIC FRANCES, INVERCARGILL

190 Large bowl, earthenware\$35
191 Casserole, earthenware\$20
192 Turquoise wall platter\$25
193 Platter with stand\$27

JOHN FULLER, FEILDING

194 Bell topped pot, stoneware\$50
195 Branch pot, stoneware\$50
196 Handbuilt bowl\$20
197 White bowl and gourd pot ..\$35 pair

BRIAN GARTSIDE, PUKEKOHE

198 Cylindrical vase, stoneware\$33
199 Slab construction 1. stoneware . \$50
200 Slab construction 2. stoneware . \$50
201 Slab construction 3. stoneware . \$50

EDNA HANAFIN, CHRISTCHURCH

- 202 Wheel pot, stoneware\$30
203 Mer-fish, stoneware\$7.50
204 Snail, stoneware\$4

JUNE HANDLEY, TE KAUWHATA

- 205 Keg and six goblets, stoneware\$65
206 Trio of pots, stoneware\$12
207 Bowl, stonewareN.F.S.
208 Vase, stoneware\$12

DENIS HANNA, AUCKLAND

- 209 Bowl, stoneware\$18
210 Jug, stoneware\$10
211 Vase, stoneware\$10
212 Bowl, stonewareN.F.S.

MARY HARDWICK SMITH, AUCKLAND

- 213 Set of three storage pots, stoneware\$20 set
214 Set six mugs and plates, stoneware\$25 set
215 Bowl, stoneware\$18
216 Bottle kiln night light, stoneware \$50

JEAN HASTEDT, WHANGAREI

- 217 Roped lidded jar, stoneware\$45
218 Bottle, stoneware\$55
219 Cylindrical Bottle,\$55
220 Four storage jars, stoneware\$40

TOMIKO HATTA, REMUERA

- 221 Set of six small bowls, stoneware\$15
222 Stoneware bowl\$16
223 Stoneware bowl\$14
224 Casserole, stoneware\$18

VAL HERCUS, LEVIN

- 225 Vase, earthenware\$40
226 Platter, earthenware\$30
227 Set of 6 wine goblets, earthenware\$20
228 Set of 6 soup bowls and saucers, earthenware\$30

MARGARET HIGGS, CHRISTCHURCH

- 229 Set of 2 pots, stoneware\$35
230 Pair goblets, stoneware\$18
231 Goblet, stoneware\$8
232 Disc bottle, stoneware\$9

ROBERT HISLOP, CAMBRIDGE

- 233 Blue vase, stoneware\$30
234 Hanging bowl, stoneware\$30
235 Free form dish, stoneware\$20
236 Bowl, stonewareN.F.S.

CHARLES HOLMES, CAMPBELL'S BAY

- 237 "Fin" pot, stoneware\$36
238 Slab pot, stoneware\$45
239 Slab pot, stoneware\$25
240 Six tiles,\$21

MAVIS JACK, TAUPO

- 241 Wall panel, earthenware\$25
242 Flat bottle, earthenware\$25
243 Four bottles\$23
244 Wall plaque\$12

STAN JENKINS, FEILDING

- 245 Bowl, porcelain\$6
246 Cheese dish, stoneware\$8
247 Jug, stoneware\$7
248 Slab dish, stoneware\$6

BERIL JOWETT, DUNEDIN

- 249 Casserole, stoneware\$18
250 Jug, stoneware\$15
251 Covered Ramekin, stoneware\$5
252 Plate, stoneware\$10

PEGGY JUDGE, HAMILTON NORTH

- 253 Wine jar, stoneware\$22
254 Herb Planter, stoneware\$12
255 Vase, stoneware\$12
256 Small ash tray, stoneware\$4

JOHN LAWRENCE, DANNEVIRKE

- 257 Wine jar and ten tots, stoneware \$50
258 Serving bowl with ladle, stoneware\$22

AUDREY LISSETTE, LEVIN

- 259 3 pots, earthenware\$12
260 Plate, earthenware\$20
261 Plate, earthenware\$20
262 Six bowls, earthenware\$16

HAZEL McCAUGHERN, CHRISTCHURCH

- 263 Soup tureen and 6 bowls, stoneware\$50
264 Platter, stoneware\$28
265 Family of bottles (three), stoneware\$25
266 Teapot, stoneware\$12

BRUCE MARTIN, HASTINGS

- 267 Square plate, stoneware\$35
268 Hexagonal bowl, stoneware\$30
269 Decorated bottle, stoneware\$20
270 Curved bottle, stoneware\$30

ESTELLE MARTIN, HASTINGS

- 271 Pair of dolls, stoneware\$34
272 Pair of dolls, stoneware\$30
273 Casserole\$20
274 Casserole\$23

HELEN MASON, TOKOMARU BAY

- 275 Casserole, stoneware\$12
276 Honey Pot, stoneware\$7
277 Butter dish, stoneware\$7
278 Plate, stoneware\$10

BETTY MAXWELL

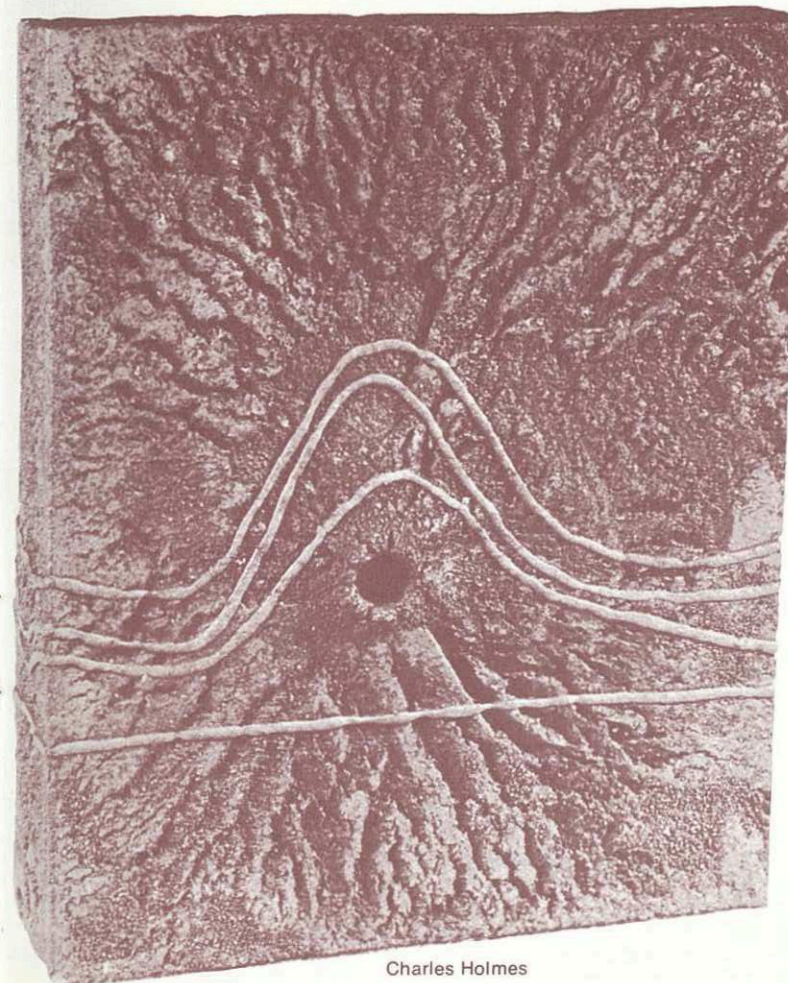
- 279 Set of 3 vases, stoneware\$30
280 Pinched bowl, stoneware\$16
281 Jar, stoneware\$16
282 Plate, stoneware\$13

PATTI MEADS, WELLINGTON

- 283 Lamp, earthenware\$65
284 Free form folded Slab pot\$25
285 Four goblets, earthenware\$24
286 Casserole, earthenware\$10

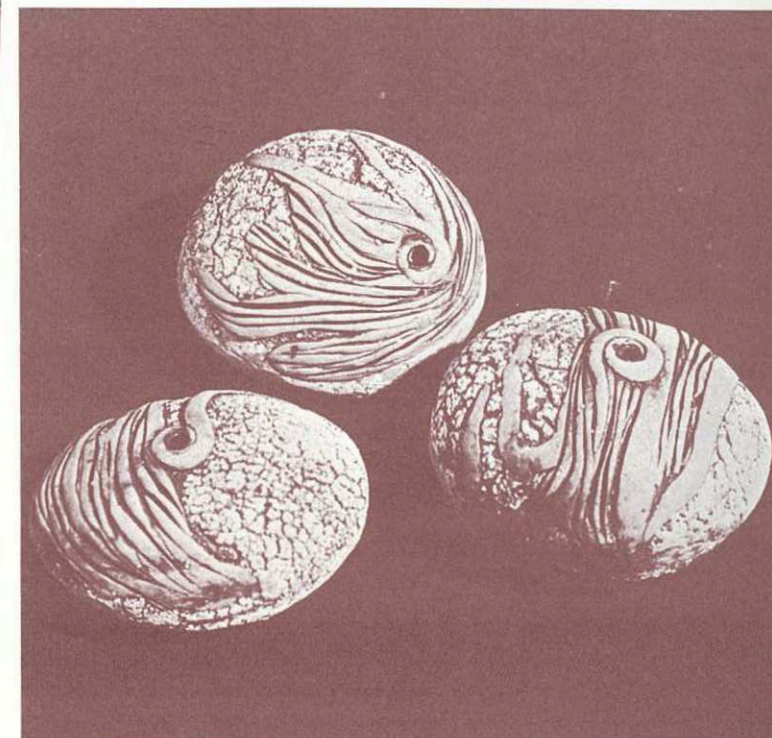
VICTOR MIDDLEMISS, INVERCARGILL

- 287 Jar, earthenware\$15

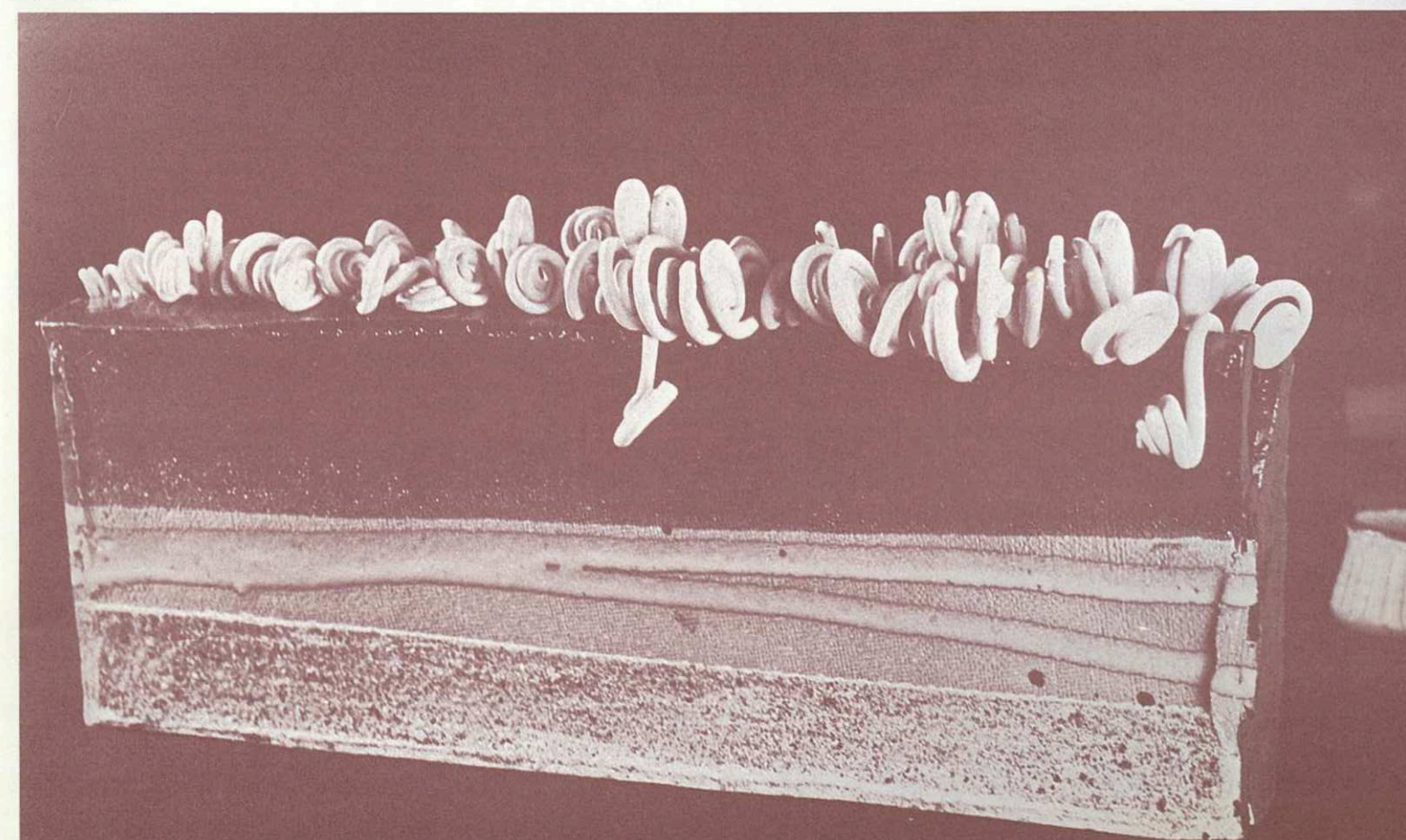


Charles Holmes

Rosemary Britain



Brian Gartside



- 288 Wine bottle, earthenware\$14
289 Bowl, earthenware\$15

MARGARET MILNE, AUCKLAND

- 290 Bowl, stonewareN.F.S.
291 Bowl, stoneware\$40
292 Bowl, porcelain\$12
293 Trinket box\$10

JOHN MITCHELL, TITIRANGI

- 294 Casserole, stoneware\$24
295 Pair of beer mugs, stoneware\$7

MURIEL MOODY, WELLINGTON

- 296 Seated figure, stoneware\$350
297 Dying Bull, stoneware\$40
298 Bird, salt glazed stoneware ...N.F.S.

RHONA MORTON, WELLINGTON

- 299 Form 1 (the finding of the eye)N.F.S.
300 Six cups\$15
301 Hanging planter\$6
302 Dual Form II\$50

GUY MOUNTAIN, KATIKATI

- 303 Lantern, stoneware\$75
304 Bowl, stoneware\$20

JOCELYN MOUNTAIN, KATIKATI

- 305 Boaties, collection of 3,
stonewareN.F.S.

GAYNOR NAIRN, ARIA

- 306 Pot, stoneware\$8

CHESTER NEALIE, CASTOR BAY

- 307 Green growing thing, stoneware \$50
308 Three echinoderms, stoneware ..\$30
309 Kotiate Form, stoneware\$30
310 Thin things, (group 7), stoneware\$85

FREDA NEWFIELD, CHRISTCHURCH

- 311 Pot, stoneware\$30
312 Pot, stoneware\$30

JEAN NICHOL, CHRISTCHURCH

- 313 Teapot, stoneware\$16
314 Coffee pot, stoneware\$15
315 Set of six mugs, cream and sugar,
stoneware\$20
316 Casserole, stoneware\$16

JOYCE OLIVER, CHRISTCHURCH

- 317 Six coffee mugs, stoneware\$15
318 Coffee set, stoneware, eight piece\$20
319 Casserole, stoneware\$12
320 Teapot, stoneware\$10

ROSEMARY PERRY, CHRISTCHURCH

- 321 Casserole, stoneware\$20
322 Sherry set, porcelain, 7 pieces ..\$40

JULIET PETER, WELLINGTON

- 323 Branch pot, stonewareN.F.S.
324 Square platter, stoneware\$14
325 Trinket box, stoneware\$8
326 Bloom-poker, stoneware\$3

COYLA RADCLIFFE-OLLIVER, CHRISTCHURCH

- 327 Storage jar, earthenware\$24
328 Salt pig and spoon, stoneware ..\$6
329 Salt pig and spoon, earthenware ..\$6
330 Vinegar bottle, stoneware\$5

MARGARET RADFORD, HAMILTON

- 331 Pot, earthenware\$20
332 Pinch pot, stoneware\$8
333 Vase, stoneware\$8
334 Teapot, stoneware\$9

PAT READ, ASHBURTON

- 335 Casserole, stoneware\$12
336 Rope handled honey pot,
stoneware\$8
337 Sherry jar, stoneware\$9
338 Small bowl, stoneware\$4

INEZ RENNIE, WELLINGTON

- 339 Nut set on mahogany tray,
earthenware\$16
340 Bowl, earthenware\$10
341 Bowl, earthenware\$10
342 Set, 7 bowls, earthenware\$30

JOAN ROUT, NAPIER

- 343 Pot\$30
344 "Rib cage"\$18
345 Wall pot\$15
346 Jug\$20

YVONNE RUST, WHANGAREI

- 347 Hanging water garden, stoneware\$75
348 Bowl set, stoneware\$45
349 Pickle jar, stoneware\$40

UNA SHARPLEY, PAPAURA

- 350 Garden group, 5 pieces\$100
351 Pod pot, terracotta\$20
352 Hearth stone, terracotta\$30
353 Lidded spheres, stoneware\$30

JENNIFER SHEARER, WELLINGTON

- 354 Six bowls, stoneware\$17
355 Fat lidded jar, stoneware\$38
356 Six coffee mugs, stoneware\$12
357 Four pint casserole, stoneware ..\$14

JANE SMISEK, TE HORO

- 358 Platter, stoneware\$30
359 Four dishes, stoneware\$16
360 Dish, stoneware\$18
361 Bowl, stoneware\$48

MIREK SMISEK, TE HORO

- 362 Crock, stoneware\$120
363 Bowl, salt glazed, stoneware ..N.F.S.
364 Grass bottle, salt glazed
stoneware\$60
365 6 goblets, stoneware\$48

CLIFFORD SMITH, AUCKLAND

- 366 Casserole, stoneware\$25
367 Wine set, stoneware\$20
368 Teapot, stoneware\$15
369 Teapot, stoneware\$9

PETER STICHBURY, MANUREWA

- 370 Bowl, stoneware\$50
371 Bowl, stoneware\$45
372 Bowl, stoneware\$30
373 Platter, stoneware\$27

DOREEN SWIFT, CHRISTCHURCH

- 374 Pair vases, stoneware\$10 pr
375 Pair vases, stoneware\$12 pr
376 Pot\$20
377 Bottle\$25

MARIA THOMSON, DUNEDIN

- 378 Bowl, stoneware\$22
379 Decanter, stoneware\$18
380 Two ramekins, stoneware\$6

DON THORNLEY, AUCKLAND

- 381 Tablet, stoneware\$38
382 Set of 6 shino plates, stoneware \$28
383 Shino teapot, stoneware\$16
384 Bottle, porcelainN.F.S.

MARI TOTHILL, CHRISTCHURCH

- 385 Three lidded pots, earthenware ..\$18
386 Earthenware bowl\$15
387 Earthenware casserole\$15

REX VALENTINE, CHRISTCHURCH

- 388 Baluster, stoneware\$40
389 Baluster, stoneware\$35
390 Landscape platter, stoneware ..\$45
391 Set of three bowls, stoneware ...\$15

MELIS VAN der SLUIS, HAMILTON

- 392 Slab bowl, stoneware\$15
393 Wine set, stoneware\$50
394 Floor pot, stoneware\$75

ARIE VAN DYK, SILVERSTREAM

- 395 Bowl, stoneware\$40
396 Jug, stoneware\$18
397 Bowl, stoneware\$30
398 Terrace pot, stoneware\$90

SHERYL van FLEET, AUCKLAND

- 399 Lidded pot,\$15
400 Jug,\$12
401 Small bowl\$5
402 Large bowl, green and white ..N.F.S.

ANN VERDCOURT, DANNEVIRKE

- 403 Portrait on a dish, stoneware ...\$70
404 Frilled dish, porcelain\$30
405 Pair of pots, porcelain\$40
406 Pieced pot, porcelainN.F.S.

DENISE WELSFORD, CHRISTCHURCH

- 407 Bowl, stoneware\$14
408 Sherry bottle, stoneware\$20
409 Coffee jug, stoneware\$14
410 Teapot, stoneware\$14

PETER WILDE, PALMERSTON NORTH

- 411 Platter, stoneware\$15
412 Bowl, stoneware\$15
413 Container, stoneware\$20
414 Casserole, stoneware\$15

HOWARD WILLIAMS, SILVERDALE

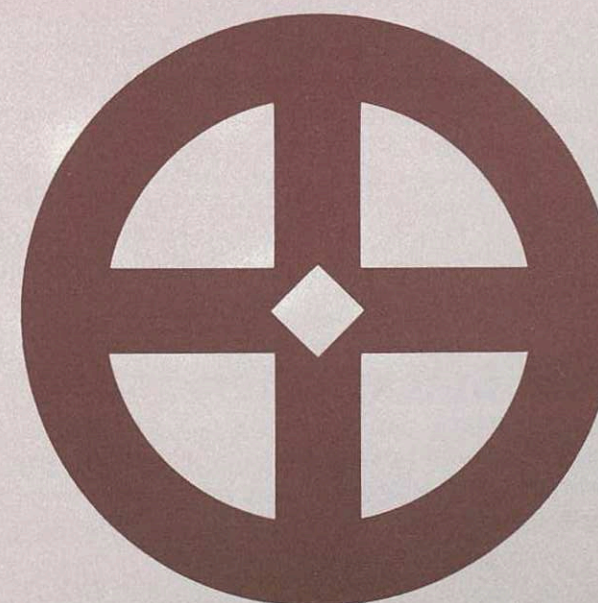
- 415 Decorative lamp, earthenware ...\$32
416 Wall tile "trees", earthenware ..\$25
417 Vase, earthenware\$8
418 Pot pourri, earthenware\$6


MARGARET SYMES, AUCKLAND

- 419 Floor pot, stoneware\$120
420 Floor pot, stoneware\$120
421 Cryptogamic stalks, three\$27
422 Bowl, stoneware\$40

OLGA SPENCE, HENDERSON

- 423 Family Portrait I, earthenware ...\$55
424 Family Portrait II, earthenware ..\$45
425 Clown, earthenware\$26
426 People vase, earthenware\$22





Around some leading Craft Shops

Special displays can be seen at these and other craft shops and galleries.

New Vision Ltd.

(SINCE 1957)

8 His Majesty's Arcade, Queen Street, Auckland.

Phones: Craft Centre 372-505; Gallery 375-440

Open: Monday to Thursday: 9 a.m. — 5.30 p.m.

Friday: 9 a.m. — 9 p.m.

Craftcentre: Special display of boxes and bowls.

Gallery: Exhibition by Bronwynne Cornish.

Peter Sinclair's

Alicat

Auckland's newest pottery shop has recently opened its doors just a few minutes from the heart of town.

We're offering a huge range of fine pottery — stoneware and earthenware, terracotta and porcelain, exhibition pieces and domestic ware.

While you're in Auckland, make sure you find time to drop in and see the work we offer. Elegant and distinctive, or rugged and characterful, we have pottery from the hands of master potters at

Alicat Gallery, 52 Jervois Road, Ponsonby. Phone 769-874

Open: Monday to Thursday: 10 a.m. — 6 p.m.

Friday: 10 a.m. — 9 p.m.

Saturday: 10 a.m. — 4 p.m.

Carl's the Craft Shop.

3 St. Heliers Bay Road. Phone 581-239.

Open: Monday to Thursday: 9 a.m. — 5.30 p.m.

Friday: 9 a.m. — 9 p.m.

Saturday: 9 a.m. — 4 p.m.

During the period of the Auckland War Memorial Museum Exhibition, we will have showing a varied representative display of pottery from Auckland's leading potters.

12 Potters

592 Mt Albert Road.

Open: Tuesday to Thursday: 10 a.m. — 4 p.m.

Friday: 10 a.m. — 8.30 p.m.

Labour Weekend: Sunday and Monday: 1.30 p.m. — 5.30 p.m.

Special exhibition featuring the work of G. Carruthers, E. Clark, R. Court, D. Dutch, M. Dawson, N. Eden, T. Hatta, O. Jones, P. King, A. Laird, B. Luxton, M. Milne, S. Oscar, J. Parker, J. Parry, B. Rapson, A. Valentine.

The Stack Gallery

Essex Road, Mt. Eden. Phone 603-630.

Open: Monday to Thursday: 9 a.m. — 5.30 p.m.

Friday: 9 a.m. — 9 p.m.

A wide selection of quality handcrafts, pottery and paintings displayed in a 90 years old Bakehouse.

Craft Horizons

Scenic Drive, Waikarua. Phone WUA 652.

Open: Monday to Thursday: 10 a.m. — 4 p.m.

Saturday and Sunday: 10 a.m. — 5 p.m.

A special display of Len Castle pottery will be showing to coincide with the National Exhibition. The Gallery will be open over Labour Weekend.

Colonial Crafts

278 Main Road, Orewa. Phone WHG 65470

Open: Monday to Thursday 9 a.m. — 5 p.m.

Friday 9 a.m. — 8.30 p.m.

Saturday 9 a.m. — 12 noon.

Labour Weekend: Saturday 2 p.m. — 5 p.m.

Sunday and Monday 10 a.m. — 4 p.m.

The widest possible range of handcrafts and a selected collection from our leading potters will be shown.

The Craft Gallery

Hutchinson's Arcade, 351 Remuera Road. Phone 548-325.

Open: Monday to Friday: 9 a.m. — 5.30 p.m.

Thursday: 9 a.m. — 9 p.m.

A special display of pottery by Anneka Boren, Arnaud Barraud, Richard Cadness, Gail Carlson, Peter Knuckey, Cliff Smith, Don Thornley, Andrew and Jean Van der Putten and other leading potters.

Selected New Zealand handcrafts include beautiful handwoven goods, Batik silk scarves and dress lengths, a wide range of leather bags, superior adzed woodware and a fine selection of silver jewellery.

Ian Firth's Pottery Shop

209 Hinemoa Street, Birkenhead.

Open: Monday to Friday: 10 a.m. — 5 p.m.

Thursday: 10 a.m. — 9 p.m.

A fine selection of pots by leading New Zealand potters.

Peter Sinclair's

Country Arts

Only a short drive from the city, in a beautiful bush setting, Country Arts offers you a huge range of local pottery. We have just about everything, but we specialise in patio-planters, terrace pots and plant containers of all kinds — the sort of thing you just don't find anywhere else. They're displayed in our own courtyard together with a selection of plants and herbs to go in them.

You'll find us open seven days a week at Muriwai Beach — take the North-Western Motorway, head for Helensville and turn left at Waimauku. A few minutes later you'll see our sign and carpark.

Open: Monday to Sunday: 9 a.m. — 6 p.m.

Phone 69 R Waimauku.



The N.Z. Society of Potters Inc.

President	Peter Stichbury
Vice President	John Fuller
Secretary	Roger Brittain
Auckland:	Howard Williams
Manawatu:	Stan Jenkins
Wellington:	Mirek Smisek
Canterbury:	Laurence Ewing
Otago-Southland:	Oswald Stephens

Guest Exhibitor: Colin Levy (Australia)

Exhibition Committee

Chairman	Chester Nealie	Beverly Luxton <i>Catering Organiser</i>
Secretary	Leo King	Margaret Symes <i>Welcoming Officer and Entertainment Organiser</i>
Treasurer	John Mason	John Toland <i>Construction and Exhibition Officer</i>
Members:	Ruth Court <i>Financial Adviser and Billeting.</i>	Howard Williams <i>Photography</i>
	Roger Brittain <i>N.Z. Society Adviser</i>	Co-opted Gillian Carruthers: <i>Sales Rosters</i>
	Kenneth Chapman <i>Catalogue Design and Layouts</i>	Sam Winterbottom: <i>Lighting</i>
	Doris Dutch <i>Demonstration Organiser</i>	
	Ian Firth <i>Exhibition Design and Construction</i>	
	Betty Hamilton <i>Catering and Transport</i>	
	Charles Holmes <i>Public Relations and Publicity</i>	Advisors to the Exhibition Committee:
	Grant Hennings <i>Catering</i>	Mr E. Turbott
	Herb Kingi <i>Entertainment Officer</i>	Trevor Bayliss
		John Wadham
		Nissen Editorial Ltd.

