

The N.Z. Society of Potters Inc.

NOLA

# 13th New Zealand Potters Exhibition

1969



# 13th New Zealand Potters Exhibition

In The Auckland War Memorial Museum Exhibition Hall  
Sunday 16th to Sunday 30th November 1969 Closes 2p.m.

Museum hours Monday-Saturday 10 a.m.-5 p.m.  
Sunday 11 a.m.-5 p.m.  
Collection times after 2 p.m. Sunday. See back page.



# 13th New Zealand Potters Exhibition

In The Auckland War Memorial Museum Exhibition Hall  
Sunday 16th to Sunday 30th November 1969 Closes 2p.m.

Museum hours Monday-Saturday 10 a.m.-5 p.m.  
Sunday 11 a.m.-5 p.m.  
Collection times after 2 p.m. Sunday. See back page.



## Foreword

The phenomenon of the development of New Zealand pottery in our days has been well noted, analyzed and appreciated in its sociological meaning — to restore the balance between industrial mass-production and the need for human individuality to survive.

The intensity and extent of the creative production of our potters and the generous public response have made New Zealand a real "potter's paradise"; so many outstanding potters in a population of only 2½ million people!

The New Zealand pottery explosion in the sixties is now proving to be a consistent and increasing force in our existence. One used to hear sarcastic remarks about the "cult of folksy, handmade, precious uniqueness" in pottery. These points did signal danger levels, but one should realise that they also contain the elements of its true meaning and strength: the acceptance and exploration of human touch and individual skill; the simplicity and honesty in material and manual processes. These are very close to the heart of the potter, without necessarily being a "cult".

In exhibitions overseas New Zealand potters are reaching far towards an international level of achievement and recognition. There is great reason to rejoice in this; to be grateful and proud, but let us not be complacent. New Zealand pottery is in a most critical and crucial stage of development.

Questions, speculations, expectations and dreams about the future could be as follows:

Could New Zealand pottery move ahead in the years to come in the same spectacular way as it has in the past ten years?

Has it reached its limits within New Zealand conditions, or within the limits of pottery itself?

To say that a new development could be in the direction of a deeper aesthetic involvement, beyond the level of technical achievement might be true, but how easily could this dream become a nightmare of misconceived sculptural atrocities and "creative" contemporary contraptions.

To say that pottery now requires a new kind of skill, a different awareness, greater imagination, more subtle levels of expression, a new sense of simplicity and proportion . . .

To say that the new development requires more experience and restraint as well as more freedom and courage; more individual expression as well as more objective efficiency in design is just about the same as saying that there is really no limit to the future of pottery; because there is no limit to human creativity and imagination; because there is no limit to our dreams . . .

And I believe that dreams can still come true.

KEES HOS

## Acknowledgements

The New Zealand Society of Potters Inc., wish to thank the following organisations and all those who have so willingly given donations and assistance towards the 13th New Zealand Potters Exhibition.

The Auckland War Memorial Museum Council Director and Staff.

Shell Oil New Zealand Ltd.

Crown Lynn Potteries Ltd.

Johnston Eagleton Ltd.

James Hardie and Co.

New Zealand Newspapers.

J. H. M. Carpenter Ltd.

Commercial Chemicals Ltd.

Radiance Engineering Ltd.

C. C. G. Industries Ltd.

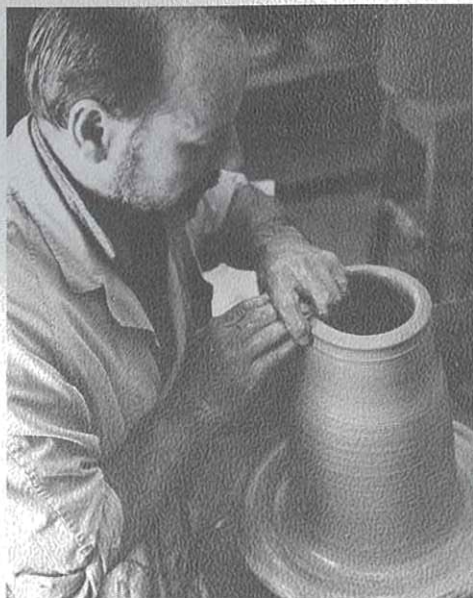
The Crum Brick Tile and Pottery Co.

The Twelve Potters.

The Auckland Studio Potters.

A. A. Corban & Sons Ltd.





### Milton Moon Guest Exhibitor

Lecturer in Ceramics at the South Australian School of Art, Adelaide, S.A.

Born Melbourne, Victoria, 1926. Since 1959 has had eight one man shows in Australia, also many group exhibitions.

Represented in major Australian Galleries and many private collections.

Represented Australia at international Exhibitions in Stuttgart, Japan and the Smithsonian Institute, Washington.

1 Large pot	\$122.50	7 Pot	\$52.50
2 Large pot	\$122.50	8 Pot	\$52.50
3 Tall pot	\$87.50	9 Pot	\$52.50
4 Cylinder pot	\$52.50	10 Table Sculpture	\$52.50
5 Cylinder pot	\$70.00	11 Table Sculpture	\$43.75
6 Pot	\$52.50	12 Bowl	\$35.00

All stoneware. Fired in a gas kiln to cone 9.  
Iron and Ash glaze.

*Art gallery*



### Marea Gazzard Guest Exhibitor

Born Sydney 1928, married to architect Donald Gazzard and has two children.

Australian Representative to the World Crafts Council.

Studied Ceramics at the National Art School, Sydney and Central School of Arts and Crafts, London.

Since 1960 has had four one man shows and many group shows. Represented in major Australian Galleries and Prieto Collection, California. Winner of Richey International Prize, 1969.

1 "Floor Pot"	\$175.00	6 Stoneware Bowl	\$122.50
2 Small "Floor Pot"	\$122.50	7 Small Pot	\$70.00
3 "Dial"	\$122.50	8 White Floor Pot	\$175.00
4 "Torso"	\$132.50	9 Large Bowl	\$140.00
5 "Torso"	\$122.50		

All stoneware. Fired to Cone 9 in oxidised atmosphere. Electric kiln. Feldspathic glazes. Oxides rubbed into bodies.



## Ivan McMeekin *Selector*

Born in Melbourne in 1919. Started potting in 1949 with Michael Leach at the Penzance School, Cornwall, then three years at Michael Cardew's Wenford Bridge Pottery, also in Cornwall. Returned to Australia in 1953, and started the Stuart Pottery at Mittagong. In 1959 joined the staff of the University of New South Wales, where he continues with teaching, research, and potting.

1967-1968 on behalf of the University carried out a survey of materials in the Darwin area, Northern Territory, developed bodies and glazes based on these materials, and supervised the setting up of a pottery training unit for Aborigines at the Bagot Aboriginal Reserve, Darwin.

He believes that pottery as an art form can act through the making of useful pots that sell at moderate prices and uses this medium of expression rather than that of ceramic sculpture and he believes in the value of knowing and using local materials.

81 - 11 chch. potters  
1200 pots 225 accepted.

Gwyn Ace, <i>Napier</i>	Stoneware
1. Casserole	\$12
Susan Allpress, <i>Papatoetoe</i>	Stoneware
2. Casserole	\$10
Nola Barron, <i>Christchurch</i>	Sculpture
3. Opened form	\$90
4. Pair candle holders and candles	\$25
5. Candlestick	\$25
6. Ceramic form "Watcher"	\$18
Marjorie Bayliss, <i>Auckland</i>	Stoneware
7. Curry set	\$16
8. Set of 6 all purpose bowls	\$8
Trevor Bayliss, <i>Auckland</i>	Stoneware
9. Bowl, Mishima inlay	\$12
10. Bowl, fluted, Tenmoku	\$18
11. Vase, Talc glaze	\$20
12. Vase, Carved, Tenmoku	\$18
Martin Beck, <i>Auckland</i>	Stoneware
13. Stamped bottle	\$12
14. Bottle, applied decoration	\$9
15. Bottle, part glazed	\$10
Nancy Beck, <i>Auckland</i>	Stoneware
15A Flower Trough	\$12
15B Cylinder Vase	\$8
Michael Block, <i>Kerikeri</i>	Stoneware
16. Sauce bottle	\$3
17. Coffee set	\$19
18. Lidded jar	\$3
19. Bowl	\$8
Doreen Blumhardt, <i>Wellington</i>	Stoneware
20. Large foyer pot	\$45
21. Turtle pot for flower arrangement	\$18
22. Teapot	\$10
23. Coffee pot	\$15
David Brokenshire, <i>Christchurch</i>	Stoneware
24. Anchor Stone pot	\$20
25. Sentinel I	\$24



<b>Betty Brown, Auckland</b>	<b>Stoneware</b>
26. Lidded box	\$2
27. Honey pot	\$3

<b>Claire Bunby, Auckland</b>	<b>Stoneware</b>
28. Pair of plates	\$9
29. Squared bowl	\$11

<b>Richard Cadness, Auckland</b>	<b>Stoneware</b>
30. Wine bottle	\$21
31. Cylindrical pot	\$28
32. Large pot, fluted top	\$30
33. Casserole	\$12

<b>Madge Canty, Tauranga</b>	<b>Stoneware</b>
34. Impressed vase	\$6
35. Bowl, impressed pattern	\$4
36. Bowl, impressed pattern	\$3

<b>John Campbell, Papakura</b>	<b>Stoneware</b>
× 37. Set of 6 beakers	\$6
38. Cane handled teapot	\$7
38A Casserole	\$8
38B Slab Bottle	N.F.S.

<b>Gail Carlsen, Coromandel</b>	<b>Stoneware</b>
39. Celedon mini-vase, with brushwork	N.F.S.
40. Tenmoku bottle vase, flat	N.F.S.
41. Blue/green bottle vase, mini	\$4
42. Fluted bottle vase, white with iron	\$4
43. Round speckled twig bottle	\$6
44. White matt bottle vase with decoration	\$6

<b>Len Castle, Auckland</b>	<b>Stoneware</b>
45. Bottle	\$30
46. Bowl	\$4
47. Trinket box	\$8
48. Bowl	\$25
49. Bowls, set of 3 lipped	\$14
50. Hanging pot	\$30

<b>Don Chambers, Feilding</b>	<b>Stoneware</b>
51. Slab pot	\$15
52. Round pot	\$12
53. Small pot	\$5
54. Storage jar	\$16

<b>Ken Chapman, Auckland</b>	<b>Stoneware</b>
55. Large branch pot	\$15
56. Tall grass pot	\$8
57. Bowl	\$3
58. Ceramic sculpture I Earthenware	N.F.S.
59. Ceramic sculpture II Earthenware	N.F.S.

<b>Bronwynne Cornish, Auckland</b>	<b>Earthenware</b>
× 60. "Heroes and Villains" Chess set with board	\$30

<b>Margaret Coupe, Kaikohe</b>	<b>Ceramic bas-relief &amp; mosaic</b>
61. "Staff Meeting"	\$500

<b>Betty Cutcher, Albany</b>	<b>Stoneware</b>
62. Hand built pot	\$15
63. Tiled table	N.F.S.

<b>Harry &amp; May Davis, Nelson</b>	<b>Stoneware</b>
64. Incised pot	\$30
65. Decanter	\$16
66. 14" Bowl, wax decoration	\$20
67. Large dish, wax decoration	\$20
68. Decorated pint jug	\$4
69. Decorated 1½ pint jug	\$5

<b>Doris Dutch, Auckland</b>	<b>Stoneware</b>
70. Casserole	\$10
71. Impressed platter	\$5
72. Trinket box	\$8
73. Set of 3 "Crater" ashtrays	\$4

<b>Toby Easterbrook-Smith, Hamilton</b>	<b>Stoneware</b>
74. Crock	\$25

<b>Frederika Ernsten, Christchurch</b>	<b>Stoneware</b>
75. Coffee set	\$24
76. Jar	\$15
77. Bowl	\$10

<b>Dorothy Ewart, Silverstream</b>	<b>Earthenware</b>
78. Savoury dish	\$3
79. Savoury dish	\$2
80. Savoury dish	\$2

<b>Molly Findlay, Gisborne</b>	<b>Stoneware</b>
81. Teapot	\$8
82. Bowl	\$9



Ian Firth, <i>Auckland</i>	Stoneware
83. Triple pot, sandstone glaze	\$12
84. Dimpled pourers, set of 3	\$15
85. Pebble shaped platter set, ash glaze	\$16

Stephen Foster, <i>Lyttelton</i>	Stoneware
86. Marmalade jar	\$3
87. Oil bottle	\$3
88. Twig bottle	\$8

Frances Frederic, <i>Invercargill</i>	Earthenware
89. Deep casserole	\$9
90. Bowl	\$10

John Fuller, <i>Feilding</i>	Stoneware
91. Pot No. 1	\$20
92. Pot No. 2	\$16
93. Large oval fruit dish	\$24
94. Bowl	\$14
95. Group of 3 pots	\$18
96. Branch vase	N.F.S.

Jean Gollop, <i>Napier</i>	Earthenware
97. Thrown plate	\$3

Neil Grant, <i>Auckland</i>	Stoneware
98. Slab bottle, white glaze over rock glaze	\$30

Ian Gray-Smith, <i>Dunedin</i>	Sculpture
99. Old manuscript	\$55

James Greig, <i>Greytown</i>	Stoneware
100. Wall mounted salt crystal	\$9
101. Faceted vase	\$12
102. Jar vase	\$35

John Handley, <i>Te Kauwhata</i>	Stoneware
103. Bottle	\$7
104. 3 Storage jars	\$8

Mary Hardwick-Smith, <i>Auckland</i>	Stoneware
105. Open bowl, Bristol glaze over iron slip	\$6
106. Open dish, Ash glaze	\$6

Allan Hedger, <i>Auckland</i>	Stoneware
107. Impressed vase	\$11
108. Large ovoid vase	\$30

Val Hercus, <i>Levin</i>	Earthenware
109. Branch pot	\$12
110. Platter	\$10

Judy Hewett, <i>Christchurch</i>	Earthenware
110A Souffle and Salad set 2 pieces	\$7

Margaret Higgs, <i>Christchurch</i>	Stoneware
111. 2 Pinched bowls	\$5
112. Pair of cut bottles	\$6

Doris Holland, <i>Christchurch</i>	Earthenware
113. White vase, tin glazed	\$17
114. Brown bottle	\$5

Grant Hudson, <i>Auckland</i>	Stoneware
115. Round salt glazed pot	\$10
116. Black salt glazed pot	N.F.S.

Mavis Jack, <i>Wellington</i>	Earthenware
117. Cylindrical vase	\$7
118. Group of 3 bottles, Turquoise speckled	\$12

Jack Laird, <i>Nelson</i>	Stoneware
119. Hanging slab pot	\$10
120. Circular hanging slab pot	\$10
121. Hanging slab bottle	\$12

John Lawrence, <i>Pahiatua</i>	Stoneware
122. Set of 3 slab built store jars	\$15

Marjorie Leighton, <i>Auckland</i>	Stoneware
123. 2 Storage jars	\$8
124. Bonsai	\$4
125. Pepper, salt & mustard	\$3
126. Casserole	\$8

Audrey Lissette, <i>Levin</i>	Earthenware
127. Set of 2 bowls	\$6
128. Bowl	\$3



Bruce Martin, <i>Hastings</i>	Stoneware
129. 5 piece Hors d'oeuvre set, with tray	\$14
130. Liqueur bottle	\$10
131. Polygon floral container	\$12
132. Ikebana floral container	\$15
133. Bonsai container	\$15

Estelle Martin, <i>Hastings</i>	Stoneware
134. Cooking oil and sherry bottles	\$10
135. Casserole	\$13
136. Bowl	\$15
137. Twig pot "Moon"	\$10

Helen Mason, <i>Auckland</i>	Stoneware
138. Coffee set	\$25
139. Pair marmalade pots	\$5
140. 6 Sweet plates	\$10
141. Lidded jar	\$3

Betty Maxwell, <i>Auckland</i>	Earthenware
142. 3 Hanging succulent pots	\$7

Margaret Milne, <i>Auckland</i>	Stoneware
143. Bowl	\$16
144. Teapot	\$7
145. Set of 6 mugs	\$8
146. Set of 7 bowls	\$14
147. Bowl	\$15

John Mitchell, <i>Te Awamutu</i>	Stoneware
148. Storage jar	\$20
149. Storage jar	\$9
150. Decorated bottle	\$5
151. Incised bottle	\$7
152. Sauce bottle	\$5
153. Cylinder pot	\$10

Guy Mountain, <i>Kati Kati</i>	Stoneware
154. Pot with limestone decoration	\$10
155. Tall cylinder	\$12

Hazel McCaughern, <i>Christchurch</i>	Stoneware
156. Bowl	\$10
157. Casserole	\$10

Gaynor Nairn, <i>Feilding</i>	Stoneware
158. Bottle	\$5
159. Small bowl	\$4
160. Honey pot	\$4

Judy Pairman, <i>Dunedin</i>	Stoneware
161. Jar, iron body, matt glaze	\$6
162. Garden lantern, basalt glaze	\$18
163. Flower container, rock glaze	\$7

David Carson Parker, <i>Wellington</i>	Stoneware
164. Bowl	\$25
165. Casserole	\$12

John Parker, <i>Auckland</i>	Stoneware
166. Grogged bowl	\$20
167. Bowl	\$40
168. Family of 3 cylinders	\$15

Rosemary Perry, <i>Christchurch</i>	Stoneware
169. Bowl	\$8
170. Casserole	\$9
171. Lidded sauce pot	\$7

Juliet Peter, <i>Wellington</i>	Stoneware
172. Branch pot, slab built	\$30
173. Terrace pot, thrown and coiled	\$35

Inez Rennie, <i>Wellington</i>	Earthenware
174. Bowl and 6 dishes	\$12

Isobel Rodie, <i>Hawera</i>	Stoneware
175. Teapot	\$7

Rachel Rose, <i>Wellington</i>	Earthenware
176. Burnished bowl	\$5

Joan Rout, <i>Napier</i>	Vitrified Earthenware
177. Hand sculptured vase	\$20
178. Hand sculptured vase	\$16
179. Hand sculptured vase	\$12
180. Hand sculptured bottle	\$16

Ngair Scott, <i>Auckland</i>	Stoneware
181. Twig vase	\$4




Una Sharpley, *Auckland*  
182. Revolving screen Stoneware \$100


Barbara Skelton, *Auckland*  
182A Pair of storage jars Stoneware \$4

Jane Smisek, *Manakau*  
183. Dish Stoneware \$9  
184. Bowl \$12  
185. Bowl \$14

Clifford Smith, *Manurewa*  
186. Casserole, rock glaze Stoneware \$7

Irene Spiller, *Christchurch*  
187. Handbuilt pot, oxide wash Stoneware \$14  
188. Handbuilt pot, oxide wash \$14  
189. Bowl, ash glaze \$8  
190. Bowl, ash glaze \$6  
191. Composite pot \$10  
192. Composite pot \$10

 Peter Stitchbury, *Auckland*  
193. Platter, double glaze & iron sand Stoneware \$25  
194. Platter, double glaze & iron sand \$25  
195. Platter, rock glaze & iron sand \$30  
196. Platter, matt glaze & iron sand \$28  
197. Jar, rock glaze \$25

 Graeme Storm, *Auckland*  
198. Decorated bowl Stoneware \$25  
199. Decorated bowl \$25  
200. Pot, carved decoration \$50  
201. Cylindrical pot \$26  
202. Cylindrical pot \$26  
203. Masked bottle \$25

Margaret Symes, *Auckland*  
204. Floor pot, wood top Stoneware \$40  
205. Floor pot, clay motif \$40  
206. Pot with stopper \$16  
207. Round floor pot \$25

Mari Tothill, *Christchurch*  
208. Muffin dish Earthenware \$4  
209. Set of 6 ramekins \$6

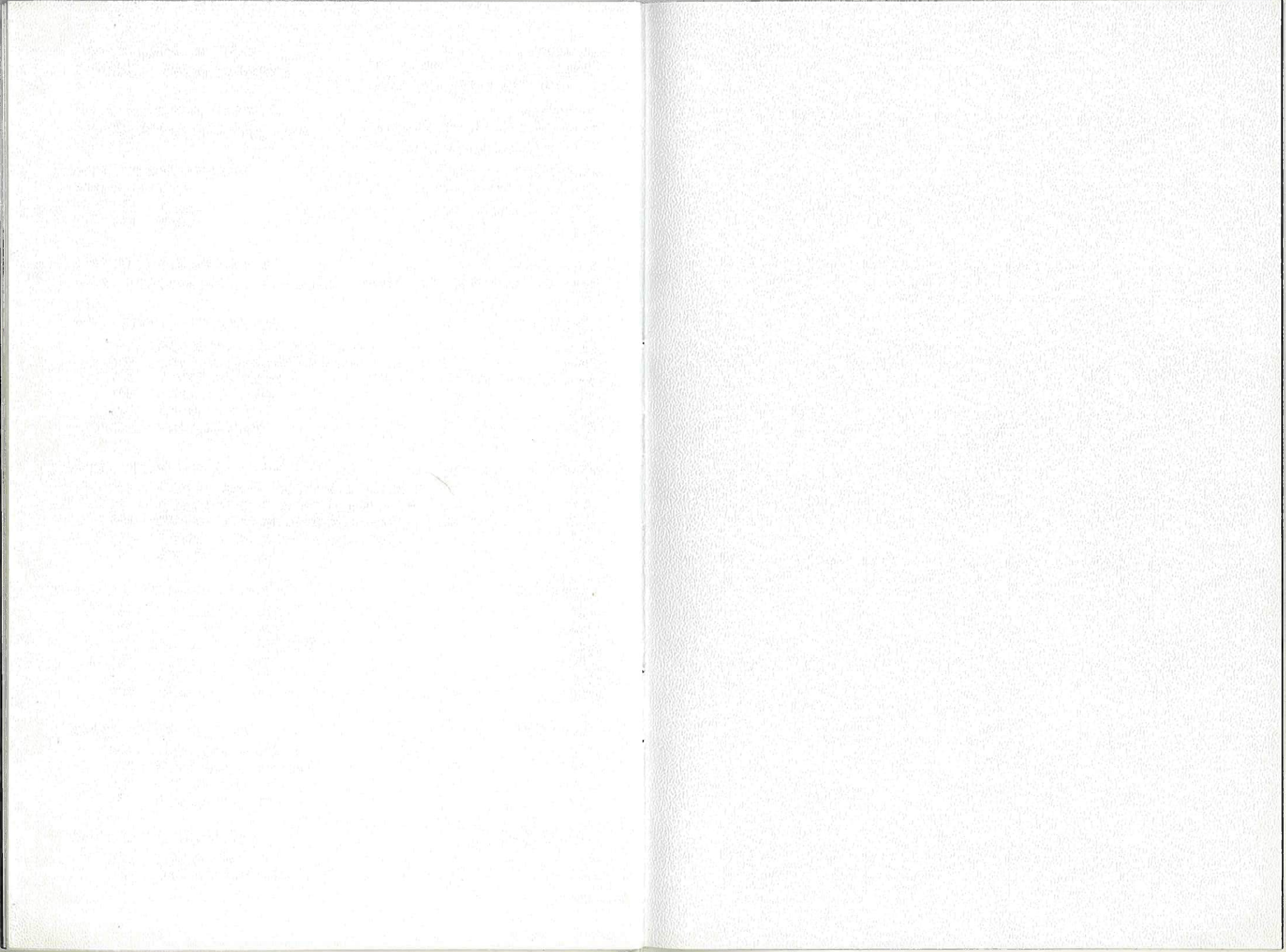
Ted and Kay Twiss, *Auckland*  
210. Salt pig, slip cast Stoneware \$2

Melis Van Der Sluis, *Hamilton*  
211. Textured vase Stoneware \$8

Ann Verdcourt, *Pahiatua*  
212. Cretan pot Stoneware \$20  
213. Cent pot \$3  
214. Cent pot \$3

Peter Wilde, *Palmerston North*  
215. Casserole Stoneware \$12  
216. Wine bottle \$8







## **New Zealand Society of Potters Inc.**

President	Doreen Blumhardt
Vice Presidents	Neil Grant and John Fuller
Auckland:	Marjorie Leighton
Wellington:	Inez Rennie
Christchurch:	Nola Barron
Otago:	Judith Pairman
"N.Z. Potter"	David Carson Parker
"N.Z. Potter"	Observer, Margaret Harris

Selector for 1969 Exhibition: Ivan McMeekin  
Assistants to Selector: Marjorie Leighton, Neil Grant

### **Exhibition Committee:**

Chairman	Margaret Milne
Secretary	Doris Dutch
Treasurer	Clifford Smith
Members	Betty Brown, Sadie Paul <i>Catering</i> Marjorie Leighton <i>Billeting, Assistant Selector</i> Nan McGregor <i>Posting, Publicity</i> Kenneth Chapman <i>Catalogue design and layouts</i> Neil Grant <i>Assistant Selector</i> Chester Nealie <i>Exhibition design</i> Garrick Oliver <i>Construction</i> John Parker <i>Construction</i> Ted Twiss <i>Lighting and transport</i>
Co-opted	Dr. Brian Lusk, <i>Financial adviser</i> Ngaire Scott, <i>Rosters</i>
Advisors to the Exhibition Committee	Mr. E. Turbott Betty Brookes Trevor Bayliss Helen Mason



## Purchasers & Exhibitors

Please collect purchased pots, those N.F.S. or unsold pots from the Exhibition Hall on:—

Sun., 30th Nov., after 2.0 p.m.

Mon., 1st Dec., 10 a.m.-5 p.m.

Tues., 2nd Dec., 10 a.m.-1 p.m.

**Note:** Sold pots which are not collected will be returned to the Exhibitor and become the purchasers responsibility to arrange for collection.

O'Reillys system *Averill Brandon*  
336 Carrington St  
New Plymouth.

*Man Eddington*  
70a Tasman St  
New Plymouth.

