

CPA

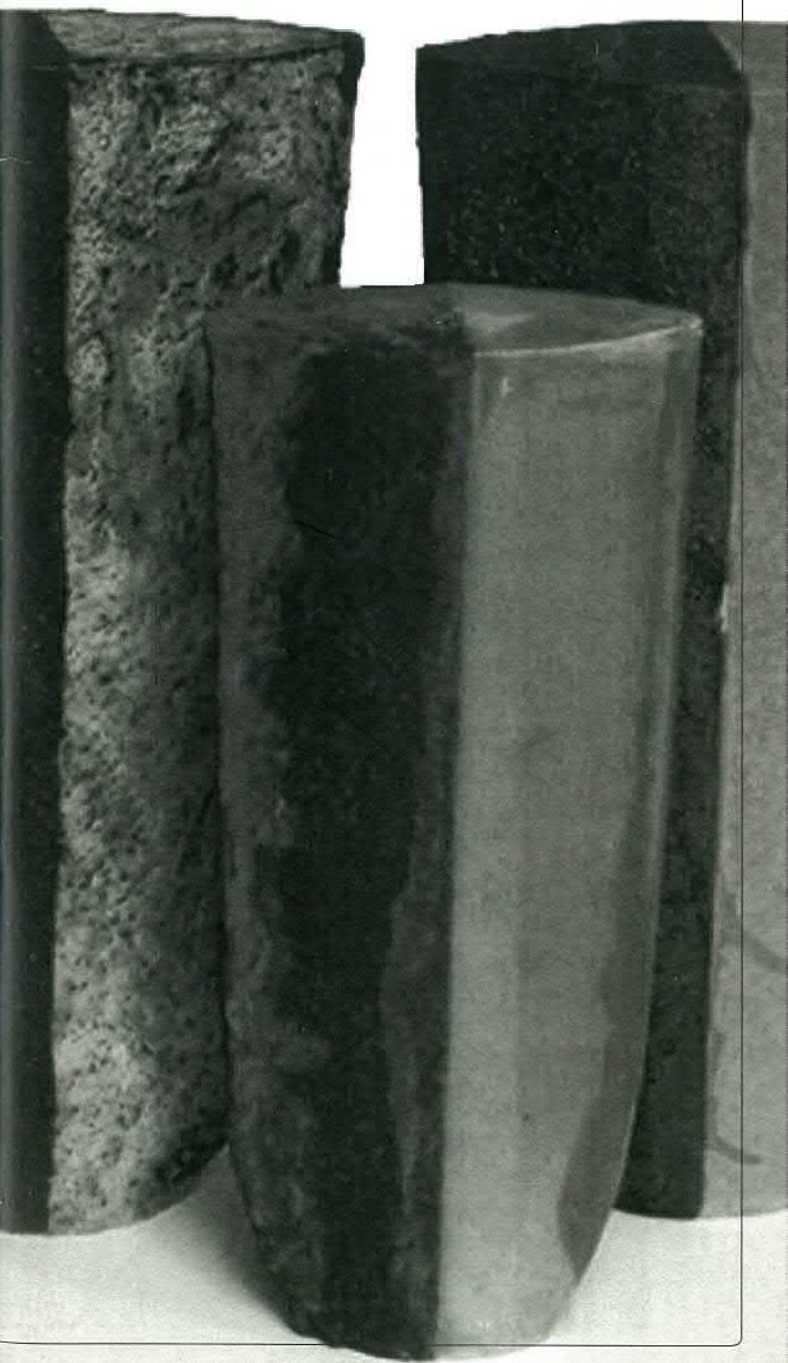
CANTERBURY POTTERS' ASSN

36TH ANNUAL EXHIBITION

5-15 NOVEMBER 09

GUEST ARTIST & EXHIBITOR : PENNY ERICSON

CANTERBURY MUSEUM
VISITORS LOUNGE



Guest Selector

Penny Ericson

Guest Speaker

Barry Allom

Exhibition Committee

Kim Henderson (Convenor)

Michael Michaels (CPA President)

Dawn Sutton

Anu Pratap

Cara Fitzgerald

Photography

Jim Pollard

Exhibition Designers

Cara Fitzgerald

Ngarita Wight

Lorraine Bonisch

Catalogue & Poster Design

Leanne Lassman

Thanks to all the volunteers who gave their time generously to help receive pots, select them, pack them, transport them, assist with exhibition set up, catering and photography. Without you we wouldn't have an exhibition.

To view online after opening night please visit
www.nzpotters.com

★ *Denotes first time exhibitor*

sales

Opening night sales procedures

No work will be sold until Michael Michaels, President of the Canterbury Potters' Association, has declared the exhibition open.

On each exhibition stand are small white sales cards, which bear numbers corresponding to the works on that stand. To purchase a work, remove the corresponding white sales card, write your name and address on the back and take it to the Sales Desk where your purchase will be recorded.

Please do not remove any sales cards until the exhibition has been declared open.

Note: Raku and pit fired work is not intended for holding liquids

collection of work

Work will be available for collection from the Museum on Sunday 15 November, between 4pm and 5.30pm or Monday 16 November between 9am and 11am. All items are to be fully paid for before or at the time of collection (as above dates). Work not collected at this time can be picked up by arrangement only, from the CPA Clubrooms. Please keep the sales card as proof of purchase and present it when you collect your work

Penny Ericson

My work for this exhibition has been based on lichens, mosses, rock surfaces and plant textures, I photographed while tramping in the South Island. Always fascinated by the detail of what's around my feet, rather than amazing vistas, I walk with a camera in hand and held close to the ground. Unusual as it may seem these amazing colours and textures are vibrant around the edges of tarns, on granite surfaces, and tucked away on the edges of pathways.

My fascination with coloured glaze, the textured ceramic surface and the way that layered slip and glaze behave, underpins the work. The understated forms help to focus the viewer's attention on the range of colours and the interplay of light and dark while providing a narrative of travels recorded and images seen.

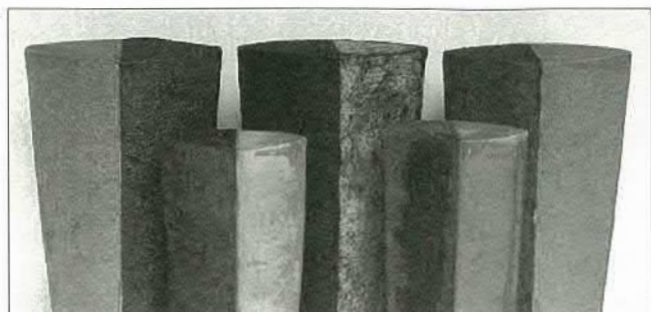
The work is made from hand rolled slabs of a white raku clay. Surface decoration begins at the leather hard stage followed by a building up of slip, engobe, and glaze layers.

All work is fired in an electric kiln at a variety of temperatures from 800c to 1150c.

Exhibition Highlights & Awards

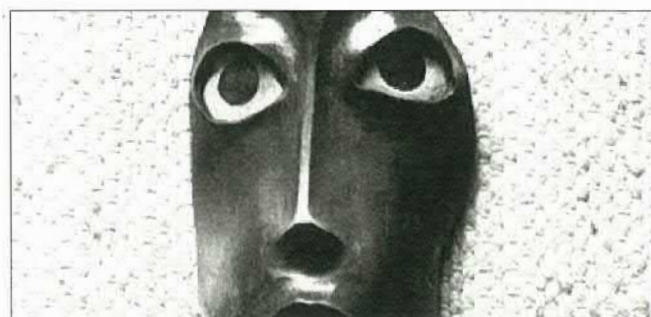
- 1992 Premier Ceramic Award : Waiheke Art Award
- 1993 Premier Ceramic Award : Waiheke Art Award
- 1994 Merit Award : NZ Society of Potters exhibition
- 1997 Merit Award : Birkenhead Trust Ceramic Award
- 1997 Fletcher Challenge (work purchased by Museum)
- 1998 Ceramic Conference, Gulgong Australia
- 1999 Premier Ceramics Award : Waiheke Art Awards
- 2000 Premier Award : Molly Morpeth Ceramic Award
- 2001 Royal Easter Show : Merit Award
- 2003 Premier Award : Portage Ceramic Exhibition
- 2003 Selected exhibitor : Sydney , Australia
- 2005 Selected Exhibitor : Portage Ceramic Exhibition
- 2006 Selected Exhibitor : Portage Ceramic Exhibition
- 2007 Selected Exhibitor : Portage Ceramic Exhibition
- 2007 Guest Exhibitor : 'Natural Selection' Waiheke
- 2008 Selected Exhibitor : Portage Ceramic Exhibition
- 2008 Invited Exhibitor : 'Collectors Show' Masterworks Gallery
- 2008 Guest Exhibitor : Waiclay Exhibition, Hamilton

exhibitors



Penny Ericson

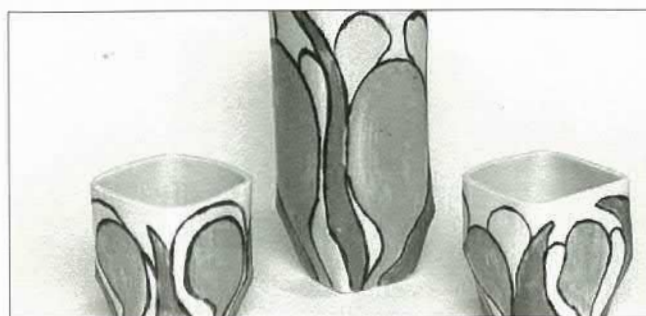
- | | | |
|---|---|--------|
| A | Five steps on a Fiordland forest track (set of 5) | \$1350 |
| B | Walking at Daybreak (set of 5) | \$1150 |
| C | Leaf form | \$450 |



Helen Sutherland

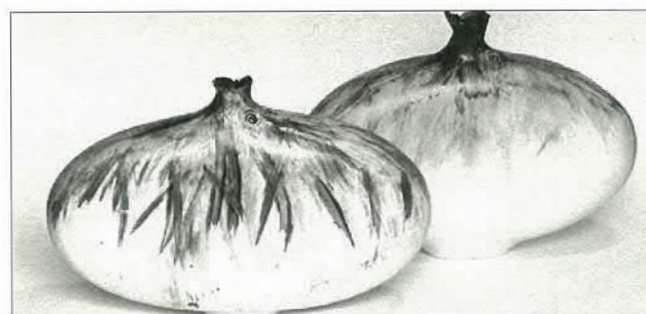
Helen was a long time member of Canterbury Potters Association who died earlier this year of Motorneurone disease. The proceeds from her work will go to the Neurological Foundation.

- | | | |
|----|------|-------|
| 1 | Mask | \$150 |
| 2 | Mask | \$150 |
| 3 | Mask | \$150 |
| 4 | Mask | \$150 |
| 5 | Mask | \$150 |
| 6 | Mask | \$150 |
| 7 | Mask | \$150 |
| 8 | Mask | \$150 |
| 9 | Mask | \$150 |
| 10 | Head | \$150 |



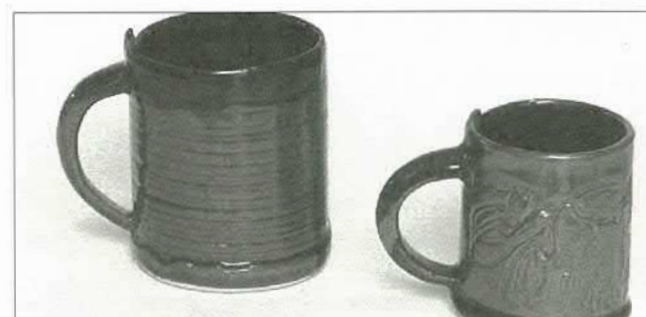
Julie Bartlett

- | | | |
|----|--------|------|
| 11 | Spring | \$85 |
|----|--------|------|



Lorraine Bonisch

- | | | |
|----|---------------|-------|
| 12 | Wide Bottle 1 | \$100 |
| 13 | Wide Bottle 2 | \$100 |
| 14 | Jug | \$90 |



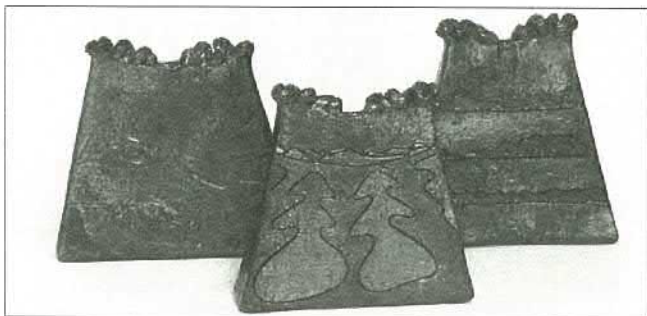
Andrew Carran

- | | | |
|----|------------------------------|------|
| 15 | Grevillia Flower Mugs (pair) | \$60 |
| 16 | Brutalist Mugs (pair) | \$60 |



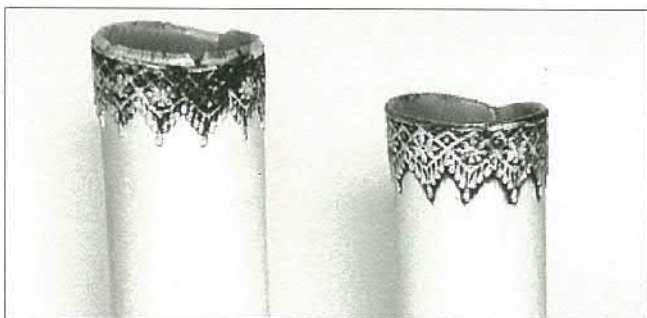
Yvonne Chiang

- | | | |
|----|-------|-------|
| 17 | Pot 1 | \$480 |
|----|-------|-------|



Sally Connolly

- | | | |
|----|-----------------------------|-------|
| 18 | Copper Slab Bottle | \$180 |
| 19 | Copper Slab Bottle | \$130 |
| 20 | Landscape | \$180 |
| 21 | Twig Holder (Braided River) | \$80 |
| 22 | Twig Holder (Foliage) | \$80 |
| 23 | Twig Holder (Nelson Lakes) | \$120 |



Sarah Crocker

- | | | |
|----|-----------------------|-------|
| 24 | Victorian Face | \$200 |
| 25 | Vase 2 | \$65 |
| 26 | Vase 3 | \$80 |
| 27 | Lace Patchwork Bowl 1 | \$35 |
| 28 | Lace Patchwork Bowl 2 | \$35 |



Steve Dench

- | | | |
|----|----------------------|-------|
| 29 | The Little Black Jug | \$45 |
| 30 | Riveted to the Spot | \$95 |
| 31 | The Plumbers Mate IV | \$200 |



Terry Gallie

- | | | |
|----|------------------------|------|
| 32 | Set of 6 Celadon Bowls | \$75 |
| 33 | Stone and Water | \$30 |



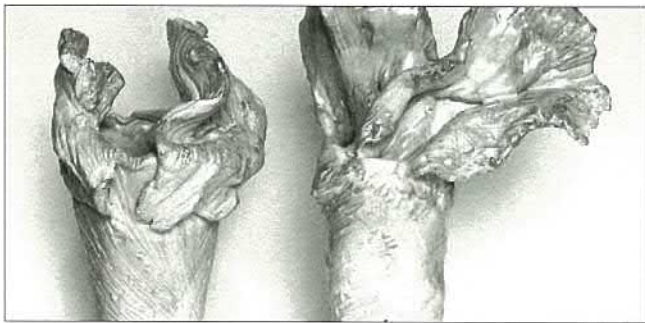
Kim Henderson ★

- | | | |
|----|------------------------------------|------|
| 34 | Darling You Look Divine (set of 3) | \$45 |
| 35 | Leaf Litter 2 | \$55 |



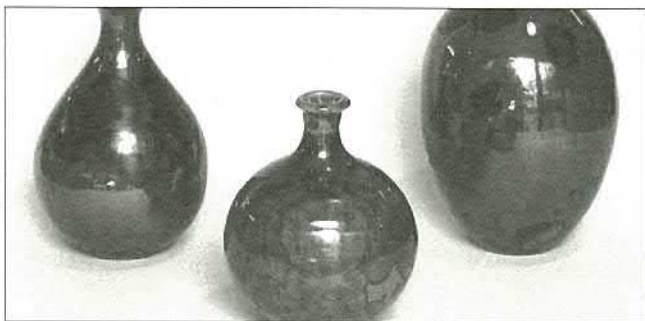
Neil Hey

- | | | |
|----|-------------------------|-------|
| 36 | Bowl of Coloured Images | \$450 |
| 37 | Bowl of Coloured Images | \$36 |
| 38 | Bowl of Coloured Images | \$36 |
| 39 | Bowl of Coloured Images | \$36 |
| 40 | Taza | \$30 |
| 41 | Taza | \$30 |
| 42 | Taza | \$30 |
| 43 | Taza Pequeno (set of 4) | \$84 |



Sabrina Idiens

- | | | |
|----|------------------|-------|
| 44 | Flutter C9 ... G | \$210 |
| 45 | Flutter C9 ... G | \$210 |
| 46 | Flutter C9 ... G | \$210 |



Patricia James

- | | | |
|----|----------------------------|------|
| 47 | Green Crystalline Bud Vase | \$85 |
| 48 | Green Crystalline Bud Vase | \$75 |
| 49 | Green Crystalline Bud Vase | \$75 |



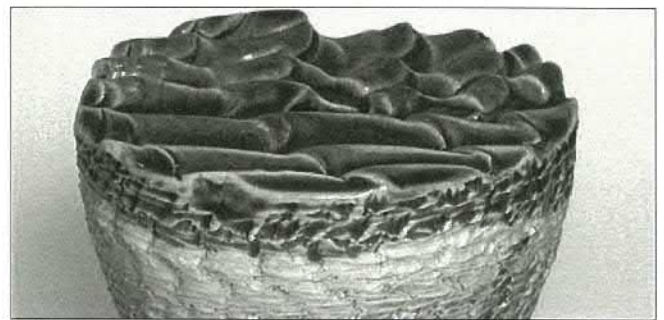
Mary Koh

- | | | |
|----|------------------|------|
| 50 | Coloured Pot | \$65 |
| 51 | Spotted Vessel I | \$25 |



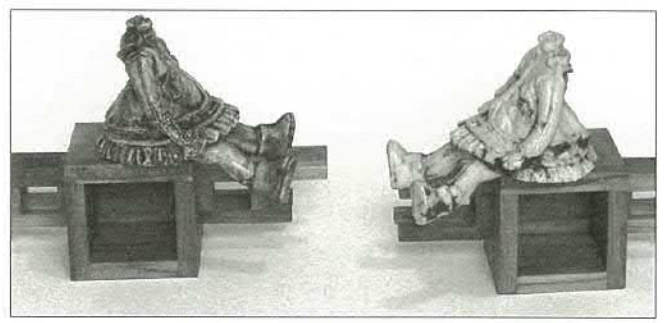
Malcolm Lean

- | | | |
|----|--------------------|------|
| 52 | Bowl – White | \$50 |
| 53 | Bowl – Large Green | \$30 |
| 54 | Porcelain Bowl | \$60 |
| 55 | Rusty Bowl | \$50 |
| 56 | Blue Bowl | \$30 |



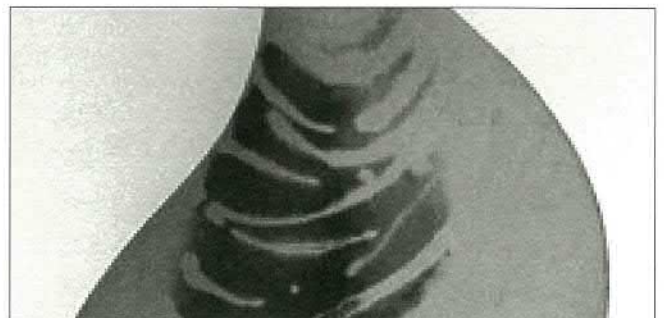
Allan Mauger

- | | | |
|----|-----------|------|
| 57 | Rough Sea | \$45 |
|----|-----------|------|



Amy Michaels

- | | | |
|----|----------|-------|
| 58 | Untitled | \$350 |
| 59 | Untitled | \$350 |



Michael Michaels

- | | | |
|----|-----------------|--------|
| 60 | Life Beginnings | \$2500 |
|----|-----------------|--------|



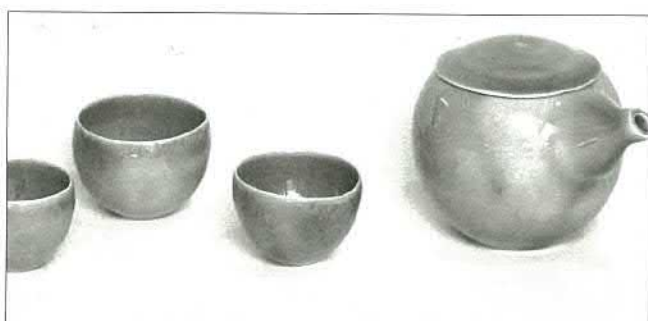
Hawwa Moore

61	Square Plate with Stripes	\$50
62	Group of 3 Round Plates	\$120
63	Jug	\$40
64	Mug	\$40
65	Vase with Indian Cedar	\$110



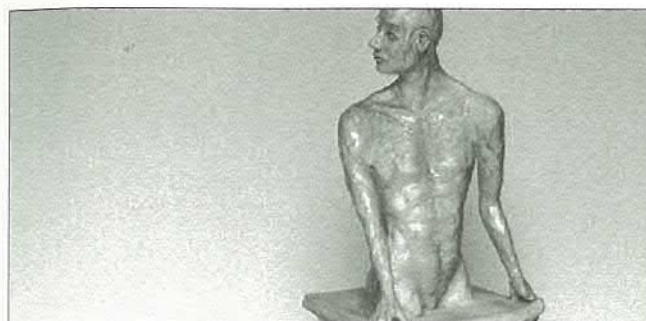
Gaye Morton

66	Pink and Grey Bowl	\$90
67	Pink and Grey Bowl	\$45
68	Pink and Grey Bowl	\$43
69	Teapot (1 cup)	\$70
70	Teapot (1 cup)	\$70
71	Teapot (2 cup)	\$85



Akane Nakao

72	Teapot Set	\$190
73	Nesting Bowls	\$270
74	Teapot	\$90
75	Cup	\$35
76	Cup	\$35
77	Cup	\$40
78	Cup	\$40



Jane O'Neill

79	Of This Mortal Coil	\$150
80	Nurture Box	\$175
81	Looking Back	\$375



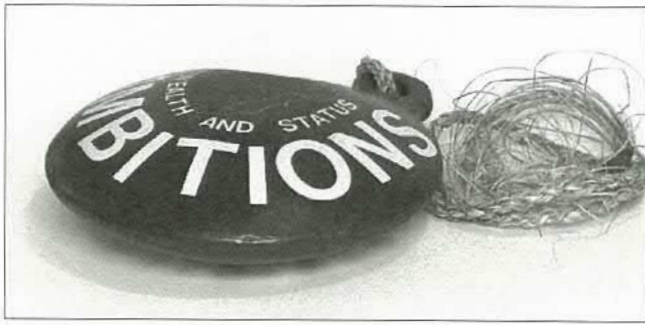
Ann O'Sullivan

82	Goblet	\$40
83	Salt Glazed Chalice	\$50
84	Candle Holder	\$150



Alex Prentice

85	Loquat Leaf 2	\$80
86	Ribbed Leaf 1	\$80
87	Ribbed Leaf 2	\$80
88	Touch	\$80



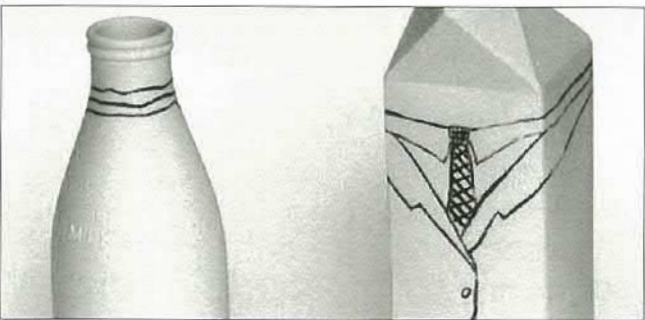
Linda Pringle

89	The Legacy	\$650
90	Promises	\$90
91	Tradition	\$90
92	Change	\$60



Hugh Ricard

93	Framed Raku Tile: Pohutukawa	\$395
94	Framed Raku Tile: Kowhai	\$395
95	Framed Raku Tile: Iris	\$395
96	Framed Raku Tile: Daisies	\$395
97	Large Raku Bowl: Kakabeak	\$395
98	Raku Vase: Kakabeak	\$250
99	Small Raku Bowl: Kakabeak	\$175
100	Koru Bowl	\$195



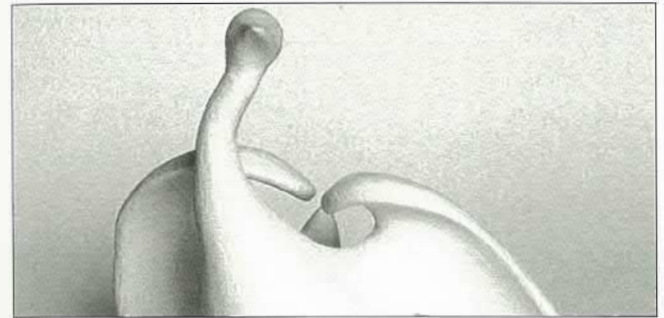
Tim Roulston ★

101	Cornish 1 (600ml)	\$55
102	Cornish 2 (1 litre)	\$75
103	Milkman 1 (600ml)	\$55
104	Milkman 2 (1 litre)	\$75



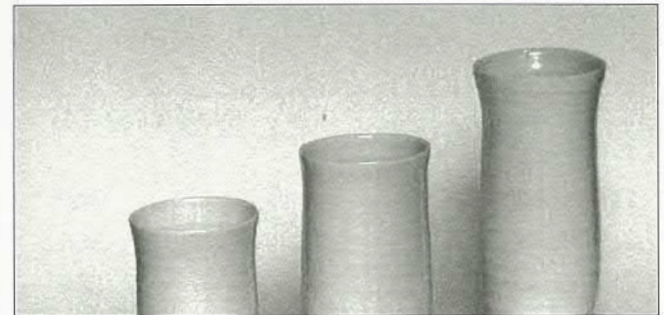
Elizabeth Steedman ★

105	Black on White	\$145
-----	----------------	-------



Joy Swafford

106	Dance, dance where ever you may be	\$330
-----	------------------------------------	-------



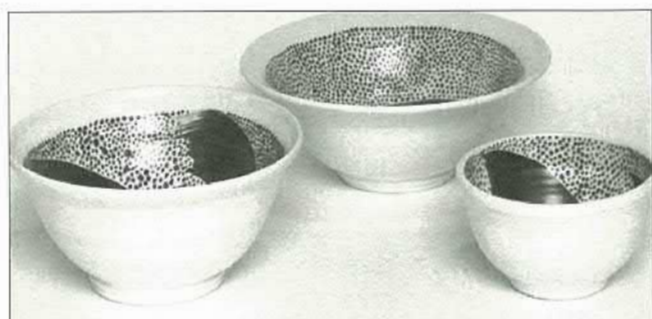
Suzanne Talbot

107	Swirl Vase	\$45
108	Swirl Vase	\$55
109	Swirl Vase	\$65



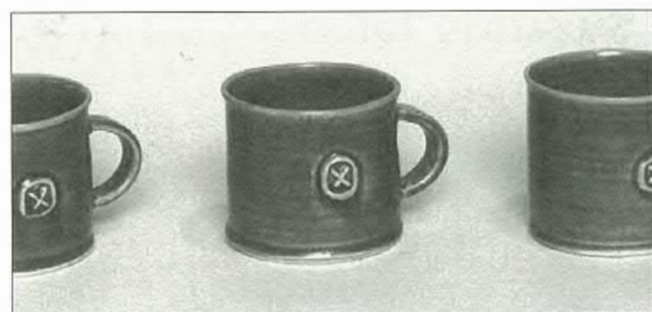
Rosemary Thompson

110	Bird	\$145
111	Bird	\$145
112	Bird	\$145
113	Bird	\$145
114	Bird	\$145
115	Pair of Birds	\$165
116	Pair of Birds	\$165



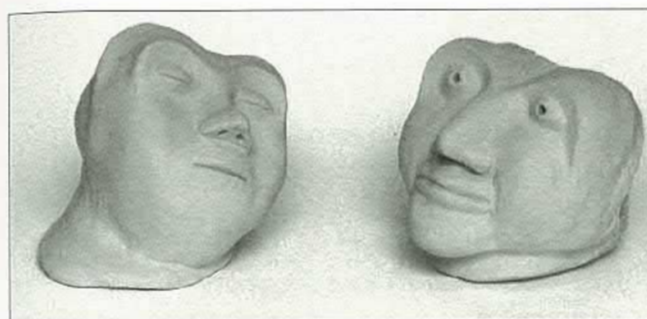
Pip Trumic

117	Bowl	\$40
118	Bowl	\$60
119	Bowl	\$80



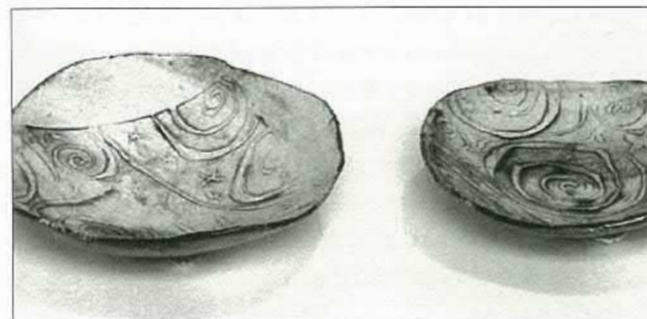
Kate Walton

120	Blue Mugs (set of 3)	\$105
121	Vegetable Dish	\$80
122	White Mugs (pair)	\$70



Rupert Weimar ★

123	Mask 2	\$250
124	Mask 3	\$250



Ngarita Wight

125	De Boos Dish 3	\$40
126	Spiral Dish 2	\$40
127	Spiral Dish 3	\$40
128	Spiral Bowl	\$50

CPA

We are a 46 year old association with nearly 100 members in Christchurch and the Canterbury region. We are a sociable group interested in all aspects of pottery, and we welcome members who wish to learn more about our craft. We offer pottery classes for adults during the school terms, and for young people during vacations. These classes, in which many Canterbury potters started off, cater for both experienced potters and absolute beginners. All classes are open to non-members.

Each year we present this regional exhibition in the Canterbury Museum and during the year a variety of more social events like open days and outdoor firings. We have facilities for a wide range of pottery techniques. These include three electric kilns a gas kiln, electric wheels, a four-inch extruder, pug mill, glaze spray booth and an extensive library, which includes a collection of videos.

The Avice Hill Memorial Prize

This prize has been established to honour the memory of Avice Hill, devoted supporter of the craft of pottery and generous benefactor to the Canterbury Potters Association, who over many years sought to encourage excellence in ceramics.

The prize is awarded to a first time exhibitor who demonstrates outstanding potential in the craft of the potter. This award is selected by the Guest Selector, CPA President & immediate past president.

Canterbury Potters Association (Inc.)
Avice Hill Reserve
395 Memorial Avenue
Christchurch
Phone (03) 358 9467

Pottery Classes for

- Absolute beginners
- Experienced potters
- Young people, after school
- Special needs adults
- School holiday programmes

Our workshop is set in the gardens of the Avice Hill Reserve at 395 Memorial Avenue.

For more information, phone (03) 358 9467 or check out our details online under Affiliated Clubs at www.nzpotters.com.

ELECTRIC HEDGEHOG DESIGN



LEANNE LASSMAN designer
spiny1@paradise.net.nz

T+F 03 9600800 c 021 2673885
po box 24235 christchurch 8642

DESIGN • PRINT • WEB •

Petals on C

Fresh Flowers For All Occasions

- * Weddings
- * Events
- * Gifts
- * Plants
- * Corporate Arrangements
- * Free Delivery to ChCh Hospitals

ph : 03 960 7255
e : sales@floristnz.com
www.floristnz.com



Contact us for more info