

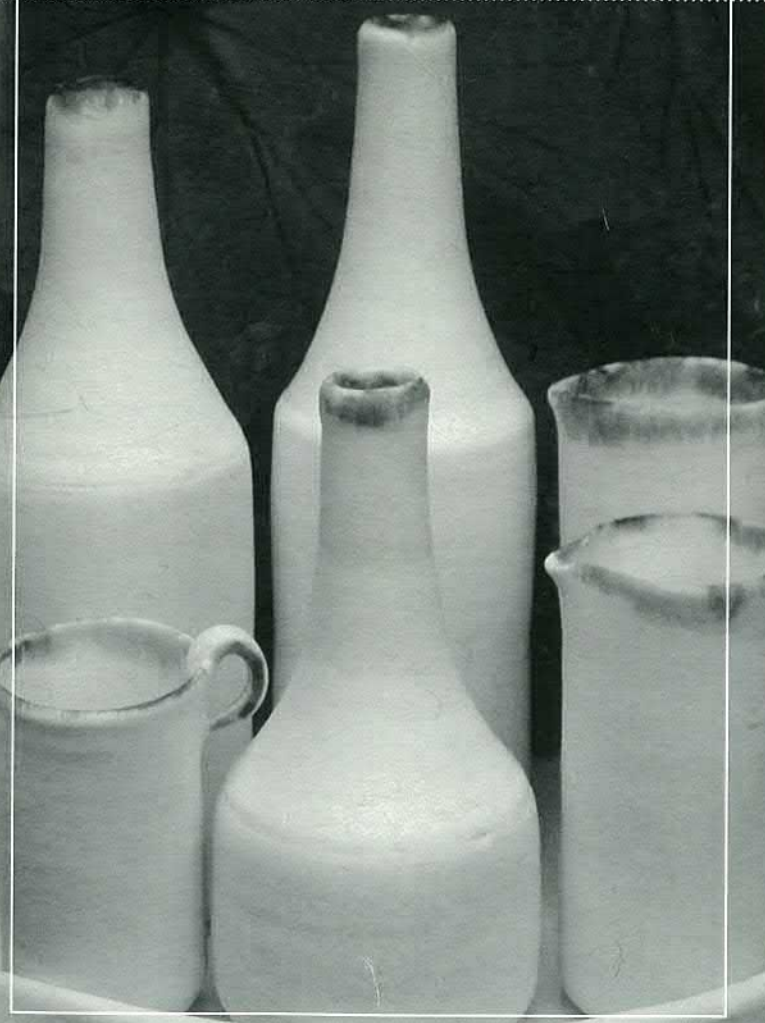
*Canterbury Potters' Association*  
**35<sup>TH</sup> ANNUAL EXHIBITION**

**5 TO 16**

*canterbury museum - visitors lounge*

**NOVEMBER 2008**

*guest selector & exhibitor › Jenny Shearer*



## **Guest Selector**

*Jenny Shearer*

## **Exhibition Committee**

*Kim Henderson (Convenor), Michael Michaels (CPA President), Magda Sakowska, Anu Pratap, Lorraine Bonisch, Ngarita Wight, Jennifer Bennett*

## **Photography**

*Jim Pollard*

## **Exhibition Designers**

*Phillipa Trumic, Anu Pratap, Kate Walton*

## **Catalogue & Poster Design**

*Leanne Lassman*

*Thanks to all the volunteers who gave their time generously to help receive pots, select them, pack them, transport them, assist with exhibition set up, catering and photography. Without you we wouldn't have an exhibition.*

*To view online after opening night please visit [www.nzpotters.com](http://www.nzpotters.com)*

★ *Denotes first time exhibitor*

**Canterbury Potters Association (Inc.)**  
**Avice Hill Reserve**  
**395 Memorial Avenue**  
**Christchurch**  
**Phone (03) 358 9467**

*Pottery Classes for*

- *Absolute beginners*
- *Experienced potters*
- *Young people, after school*
- *Special needs adults*
- *School holiday programmes*

*Our workshop is set in the gardens of the Avice Hill Reserve at 395 Memorial Avenue.*

*For more information, phone (03) 358 9467 or check out our details online under Affiliated Clubs at [www.nzpotters.com](http://www.nzpotters.com).*

# sales

## **Opening night sales procedures**

*No work will be sold until Michael Michaels, President of the Canterbury Potters' Association, has declared the exhibition open.*

*On each exhibition stand are small white sales cards, which bear numbers corresponding to the works on that stand. To purchase a work, remove the corresponding white sales card, write your name and address on the front and take it to the Sales Desk where your purchase will be recorded.*

*Please do not remove any sales cards until the exhibition has been declared open.*

*A minimum of 10% of the sales price is required as a deposit.*

*Note: Raku and pit fired work is not intended for holding liquids*

## **Collection of work**

*Work will be available for collection from the Museum on Monday 17 November between 9am and 11am. Work not collected at this time, can be collected by 23 November from the Pot Shop, Arts Centre, Worcester Street, Christchurch. Please keep the sales card as proof of purchase and present it when you collect your work.*

# Jenny Shearer

*For over 35 years I have been making pots. At present I teach Diploma students of Ceramics for 1 term a year. I am the incumbent president of the New Zealand Academy of Fine Arts in Wellington.*

*The main thrust of my work has been functional vessels made on the potters wheel. Initially I made a wide range of domestic ware including large crocks and vases. After discovering the luminous qualities of porcelain I decided to focus on smaller items such as one-off tea-sets, cups and bowls. These I fire in a gas kiln under reduction to 1300C. The glazes are pale green and blue celadons and clear white — of oriental origin. The Southern Ice translucent clay I use comes from Australia.*

*Recently I have added some wall-pieces and sideboard 2D and 3D still-life compositions to my repertoire.*

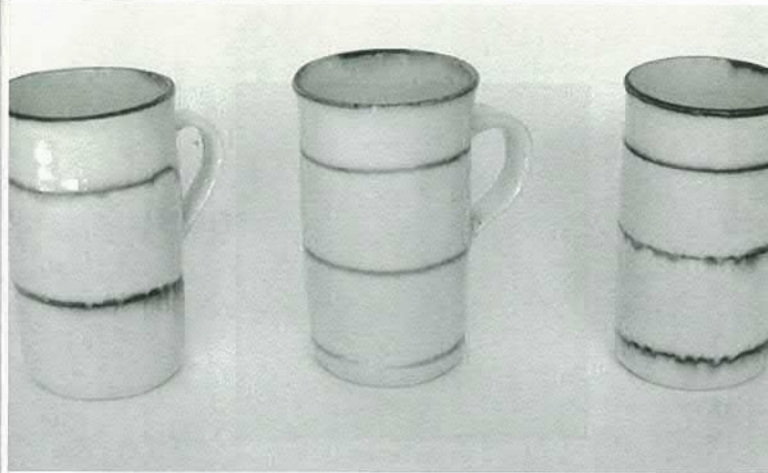
*Making the urban ritual vessel has been a passion for me. Seeing the special cup, plate, bowl on the table and in everyday use gives me great pleasure. I have felt privileged to be part of the wonderful applied arts scene in New Zealand.*

## **Collections**

*The Dowse Art Museum Lower Hutt  
Government House Wellington  
Napier Art Gallery  
Christchurch Art Gallery  
Southland Art Museum  
ASP Collection Auckland Museum.*

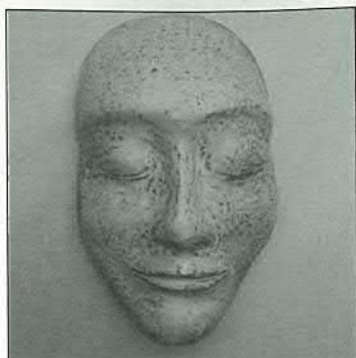
## **Awards**

*Selected for Fletcher Challenge twice  
Merit Award Royal Easter Show 1997  
Merit Award NZSP Suter Gallery Nelson  
Premier Award Thames Summer Art Exhib 1999  
Premier Award domestic ware National  
Exhibition NZSP 2005  
Artist in Residence 2004-8 Wellington Potters  
Centre*

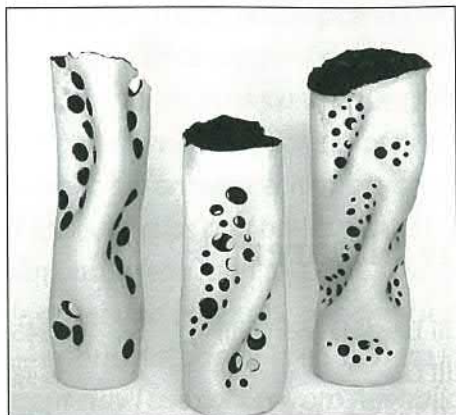


## **Jenny Shearer**

A	Still Life (a la Morandi)	\$450
B	Still Life	\$485
C	Tall Tea Set - Pot	\$395
D	Tea for Two on Tray	\$295
E	Tea for Two on Hanky Tray	\$295
F	Set of 4 Cylinder Jugs on Tray	\$185
G	2 Oval Jugs on a Square Tray	\$175
H	2 Oval Jugs on a Square Tray	\$175
I	Nest of 4 Squared Bowls	\$295
J	Nest of 3 Squared Bowls	\$265



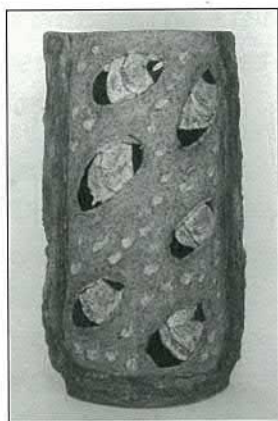
Jennifer Bennett



Lorraine Bonisch



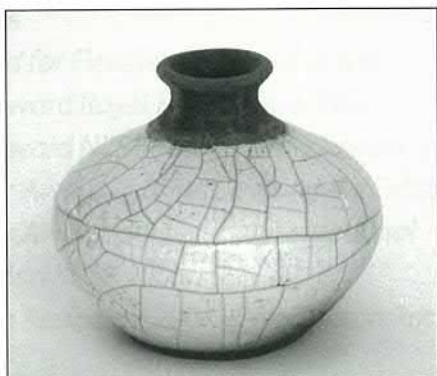
Sarah Crocker



Yvonne Chiang



Erica d'Stewart



Anne Deegan

# exhibitors

## Jennifer Bennett ★

- |   |           |       |
|---|-----------|-------|
| 1 | Contented | \$203 |
|---|-----------|-------|

## Lorraine Bonisch

- |    |                   |       |
|----|-------------------|-------|
| 2  | Contrast Vessel 1 | \$110 |
| 3  | Contrast Vessel 2 | \$110 |
| 4  | Contrast Vessel 3 | \$90  |
| 5  | Contrast Vessel 4 | \$90  |
| 6  | Contrast Vessel 5 | \$70  |
| 7  | Naked Vessel 1    | \$90  |
| 8  | Naked Vessel 2    | \$90  |
| 9  | Naked Vessel 3    | \$70  |
| 10 | Naked Vessel 4    | \$70  |

## Yvonne Chiang

- |    |           |       |
|----|-----------|-------|
| 11 | Sculpture | \$760 |
| 12 | Landscape | \$250 |

## Sarah Crocker ★

- |    |                        |      |
|----|------------------------|------|
| 13 | Patchwork Bowls - pair | \$38 |
| 14 | Patchwork Bowls - pair | \$38 |

## Erica d'Stewart

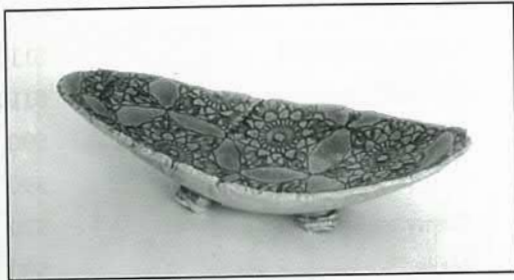
- |    |                   |       |
|----|-------------------|-------|
| 15 | Belle of the Ball | \$280 |
|----|-------------------|-------|

## Anne Deegan

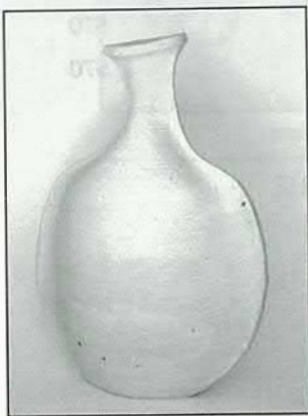
- |    |               |      |
|----|---------------|------|
| 16 | Raku Bottle 1 | \$40 |
| 17 | Raku Bottle 2 | \$40 |
| 18 | Raku Bottle 4 | \$40 |
| 19 | Raku Bottle 5 | \$40 |
| 20 | Raku Bottle 6 | \$40 |



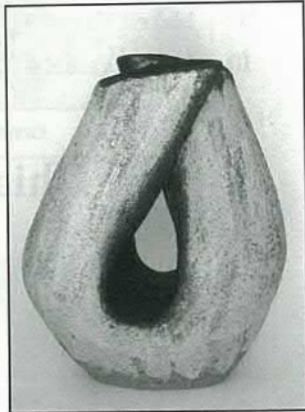
Steve Dench



Lyanne Fitzgibbon



Sarah Ford



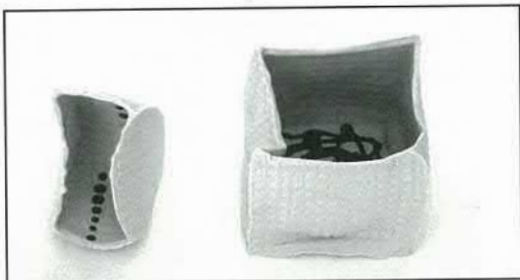
Jackie Gough



Renate Galetzka



Terry Gallie



Fleur Hart

## Steve Dench

- |    |                         |       |
|----|-------------------------|-------|
| 21 | The Little Red Jug      | \$195 |
| 22 | Mamma's Old Custard Jug | \$195 |
| 23 | The Plumbers Side Kick  | \$150 |

## Lyanne Fitzgibbon ★

- |    |                                |       |
|----|--------------------------------|-------|
| 24 | Aunty Monica's Wedding Present | \$90  |
| 25 | The Convent Treasure           | \$110 |

## Sarah Ford

- |    |         |       |
|----|---------|-------|
| 26 | Pod Pot | \$160 |
| 27 | Pod Pot | \$180 |
| 28 | Pod Pot | \$240 |

## Renate Galetzka

- |    |                |       |
|----|----------------|-------|
| 29 | Fossicking I   | \$230 |
| 30 | Fossicking III | \$80  |
| 31 | Fossicking VI  | \$80  |

## Terry Gallie

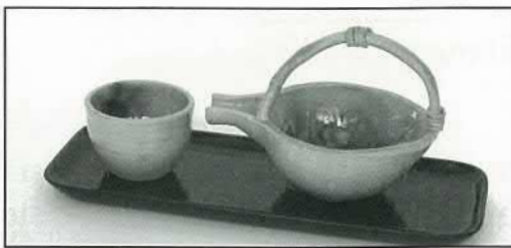
- |    |                     |      |
|----|---------------------|------|
| 32 | Nut Bowl            | \$10 |
| 33 | Walnut Bowls - pair | \$20 |
| 34 | Walnut Bowl         | \$20 |
| 35 | Burgandy Bowl       | \$25 |

## Jacky Gough ★

- |    |          |       |
|----|----------|-------|
| 36 | Pot No.2 | \$80  |
| 37 | Pot No.3 | \$150 |

## Fleur Hart ★

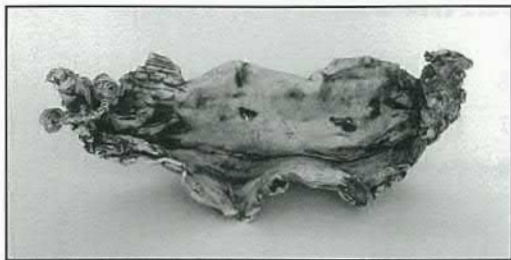
- |    |                     |      |
|----|---------------------|------|
| 38 | Porcelain Container | \$45 |
| 39 | Porcelain Box       | \$60 |
| 40 | Porcelain Jug       | \$60 |



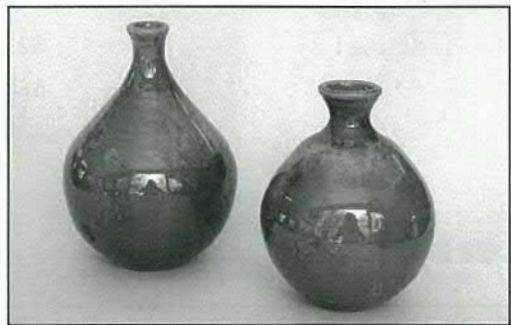
Sachiko Hayashi



Neil Hey



Sabrina Idiens



Patricia James



Murray Johnston



Mary Koh

## Sachiko Hayashi ★

- |    |             |      |
|----|-------------|------|
| 41 | Sake Set    | \$20 |
| 42 | Tea Cup Set | \$20 |

## Neil Hey

- |    |                            |       |
|----|----------------------------|-------|
| 43 | Mug Set of Four            | \$80  |
| 44 | Bowl of Coloured Images    | \$148 |
| 45 | Bowl of Coloured Images    | \$98  |
| 46 | Bowl of Coloured Images    | \$58  |
| 47 | Bowl of Coloured Images    | \$32  |
| 48 | Bowl of Coloured Images    | \$32  |
| 49 | Bowl with Black Salt Glaze | \$65  |
| 50 | Bowl with Blue Salt Glaze  | \$58  |
| 51 | Bowl with Blue Salt Glaze  | \$42  |

## Sabrina Idiens

- |    |                         |       |
|----|-------------------------|-------|
| 52 | Who Were the Boat Men A | \$260 |
| 53 | Who Were the Boat Men B | \$360 |
| 54 | Who Were the Boat Men C | \$360 |

## Patricia James

- |    |                       |      |
|----|-----------------------|------|
| 55 | Jade Crystal Bud Vase | \$60 |
| 56 | Jade Crystal Bud Vase | \$60 |
| 57 | Jade Crystal Vase     | \$60 |

## Murray Johnston

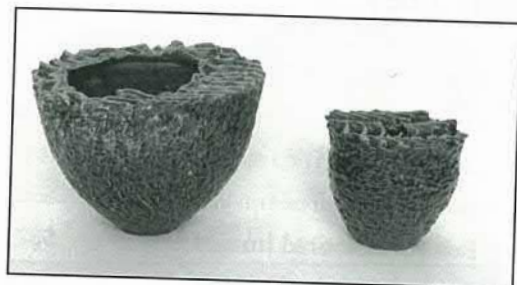
- |    |                               |       |
|----|-------------------------------|-------|
| 58 | Turquoise Swirl Bowl          | \$130 |
| 59 | Turquoise Cushion Candle Bowl | \$95  |
| 60 | Turquoise Platter             | \$110 |

## Mary Koh

- |    |            |       |
|----|------------|-------|
| 61 | Earthy     | \$150 |
| 62 | Coiled Pot | \$85  |



Leanne Lassman



Allan Mauger



Michael Michaels



Amy Michaels



Seiji Miyajima



Gaye Morton

## Leanne Lassman ★

63	Thing 1	\$30
64	Thing 2	\$30
65	Thing 4	\$30
66	Thing 6	\$30
67	Thing 7	\$30
68	Catseyes	\$30
69	Untitled	\$50
70	Folded	\$50

## Allan Mauger

71	Single Bloom Vase	\$35
72	Single Bloom Vase	\$45
73	Reflection Bowl	\$50

## Amy Michaels

74	Porcelain Doll	\$900
75	Porcelain Doll	\$900

## Michael Michaels

76	3 Cup Bowls	\$105
77	2 Cup Bowls	\$70
78	Canonical Head I	\$1250
79	Canonical Head II	\$1250
80	Canonical Head III	\$600
81	Canonical Head IV	\$600
82	Canonical Head V	\$500

## Seiji Miyajima

83	Kinu No Umi A - The Silk Sea	\$650
84	Kinu No Umi B - The Silk Sea	\$650

## Gaye Morton

85	Taylor'd Baches I	\$330
85a	Taylor'd Baches III	\$350





Akane Nakao



Jane O'Neill



Alex Prentice



Linda Pringle



Hugh Ricard

## Akane Nakao

86	Cups and Saucers	\$180
87	Nesting Bowls	\$290
88	Tea Pot	\$80
89	Tea Leaf Container	\$60
90	Cup	\$35
91	Cup	\$35
92	Celadon Cup	\$35
93	Celadon Cup	\$35

## Jane O'Neill

94	Queen	\$450
95	Glimpsing Infinity	\$200

## Alex Prentice

96	Patu Uku	\$180
97	Patu Uku	\$180
98	Wahaika	\$180
99	Wahaika	\$180
100	Wahaika	\$180

## Linda Pringle

101	NZ Needs You	\$210
102	Passport	\$210
103	Follow the Dream	\$210
104	1/4 Acre Pavlova Paradise	\$210
105	1/4 Acre Pavlova Paradise	\$210
106	NZ Welcomes You	\$210
107	Expectations	\$90
108	1/4 Acre Pavlova Paradise	\$70
109	1/4 Acre Pavlova Paradise	\$70
110	Lots to Do	\$70

## Hugh Ricard

111	Framed Raku Tile : Pohutakawa	\$395
112	Framed Raku Tile : Eucalyts	\$395
113	Raku Bowl : Koi Carp	\$525
114	Raku Vase : Clematis	\$250
115	Raku Bowl : Pohutakawa	\$195
116	Raku Bowl : Kowhai	\$195
117	Raku Bowl : Clematis	\$195
118	Raku Vase : Kakabeak	\$195



Akane Nakao



Jane O'Neill



Alex Prentice



Linda Pringle



Hugh Ricard

## Akane Nakao

86	Cups and Saucers	\$180
87	Nesting Bowls	\$290
88	Tea Pot	\$80
89	Tea Leaf Container	\$60
90	Cup	\$35
91	Cup	\$35
92	Celadon Cup	\$35
93	Celadon Cup	\$35

## Jane O'Neill

94	Queen	\$450
95	Glimpsing Infinity	\$200

## Alex Prentice

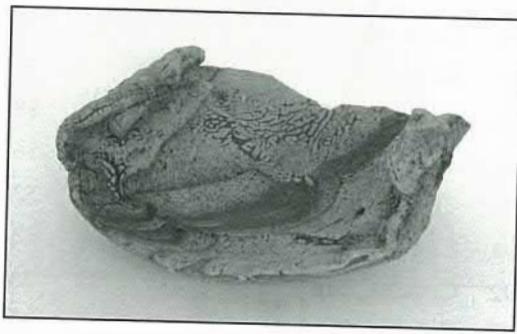
96	Patu Uku	\$180
97	Patu Uku	\$180
98	Wahaika	\$180
99	Wahaika	\$180
100	Wahaika	\$180

## Linda Pringle

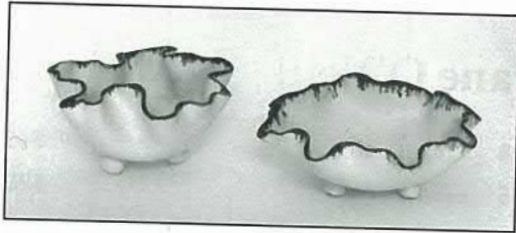
101	NZ Needs You	\$210
102	Passport	\$210
103	Follow the Dream	\$210
104	1/4 Acre Pavlova Paradise	\$210
105	1/4 Acre Pavlova Paradise	\$210
106	NZ Welcomes You	\$210
107	Expectations	\$90
108	1/4 Acre Pavlova Paradise	\$70
109	1/4 Acre Pavlova Paradise	\$70
110	Lots to Do	\$70

## Hugh Ricard

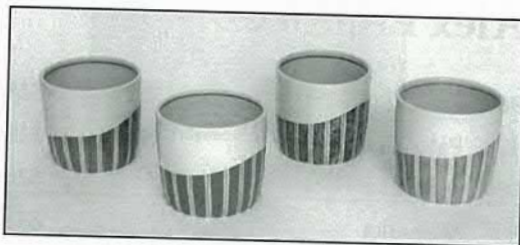
111	Framed Raku Tile : Pohutakawa	\$395
112	Framed Raku Tile : Eucalyts	\$395
113	Raku Bowl : Koi Carp	\$525
114	Raku Vase : Clematis	\$250
115	Raku Bowl : Pohutakawa	\$195
116	Raku Bowl : Kowhai	\$195
117	Raku Bowl : Clematis	\$195
118	Raku Vase : Kakabeak	\$195



Margaret Ryley



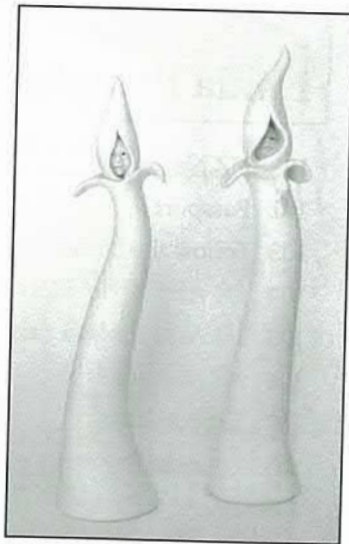
Magda Sakowska



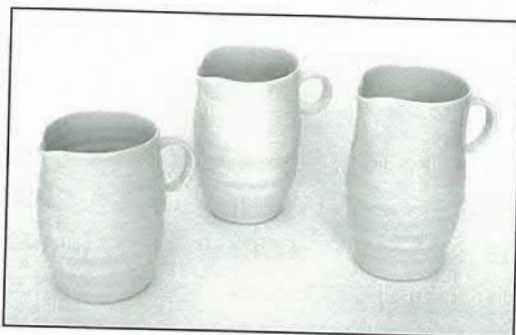
Sue Sukanuma



Dawn Sutton



Joy Swafford



Sue Talbot

## Margaret Ryley

119	Waimakariri IV	\$175
120	Waimakariri V	\$175
121	Waimakariri VI	\$250
122	Waimakariri VII	\$350

## Magda Sakowska

123	Tomato Bowl II	\$55
124	Cream Bowl I	\$45
125	Cream Bowl II	\$55
126	Charcoal Bowl I	\$45
127	Charcoal Bowl II	\$55

## Sue Sukanuma ★

128	Forest	\$35
129	River	\$35
130	Navy Ribbons	\$40
131	Tale of Leaves	\$60
132	Blue Stripes	\$30

## Dawn Sutton ★

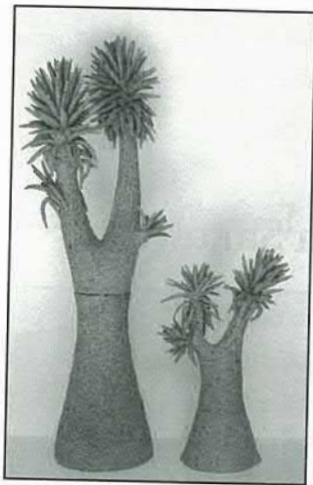
133	Form	\$120
-----	------	-------

## Joy Swafford

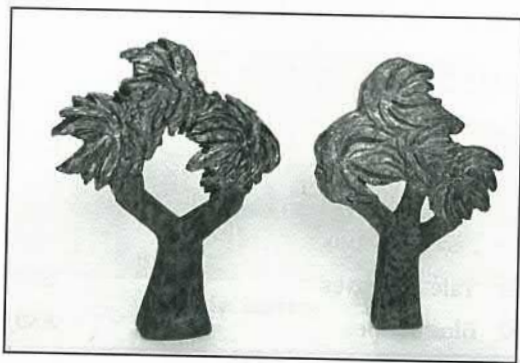
134	Face in the Flame of the Candle in the Wind	\$180
135	Face in the Flame of the Candle in the Wind	\$180

## Sue Talbot

136	Large Twirl Vase Porcelain	\$150
137	Reformed Vase Porcelain	\$60
138	Reformed Vase Porcelain	\$45
139	Crossed Helix Set Porcelain	\$85
140	Jugs 2 Porcelain	\$55



Susan Thomson



Rosemary Thompson



Kate Walton



Ngarita Wight

## Susan Thomson ★

- |     |               |       |
|-----|---------------|-------|
| 141 | Ti Kouka Nui  | \$300 |
| 142 | Ti Kouka Nohi | \$150 |

## Rosemary Thompson

- |     |                      |       |
|-----|----------------------|-------|
| 143 | Cordyline Nor'Wester | \$115 |
| 144 | Cordyline Nor'Wester | \$115 |
| 145 | Cordyline Nor'Wester | \$115 |

## Kate Walton

- |     |                      |       |
|-----|----------------------|-------|
| 146 | Blue Mugs - set of 4 | \$140 |
| 147 | Antipasto Platter    | \$120 |
| 148 | Gratin Dish          | \$95  |

## Ngarita Wight

- |     |                      |       |
|-----|----------------------|-------|
| 149 | Howling Dog Bowl     | \$130 |
| 150 | Howling Dog Bowl     | \$130 |
| 151 | Spiral and Star Bowl | \$140 |
| 152 | Spiral and Star Bowl | \$120 |

*We are a 45 year old association with over 150 members in Christchurch and the Canterbury region. We are a sociable group interested in all aspects of pottery, and we welcome members who wish to learn more about our craft. We offer pottery classes for adults during the school terms, and for young people during vacations. These classes, in which many Canterbury potters started off, cater for both experienced potters and absolute beginners. All classes are open to non-members.*

*Each year we present this regional exhibition in the Canterbury Museum and during the year a variety of more social events like open days and outdoor firings. We have facilities for a wide range of pottery techniques. These include three electric kilns a gas kiln, electric wheels, a four-inch extruder, pug mill, glaze spray booth and an extensive library, which includes a collection of videos.*

## **The Avice Hill Memorial Prize**

*This prize has been established to honour the memory of Avice Hill, devoted supporter of the craft of pottery and generous benefactor to the Canterbury Potters Association, who over many years sought to encourage excellence in ceramics.*

*The prize is awarded to a first time exhibitor who demonstrates outstanding potential in the craft of the potter. This award is selected by the Guest Selector, CPA President and immediate past president.*

**ELECTRIC HEDGEHOG DESIGN**



LEANNE LASSMAN designer  
spiny1@paradise.net.nz

☎ 03 9600800 ☎ 021 2673885  
po box 24235 christchurch 8642

DESIGN - PRINT - WEB -