

# PREVIEW

Art in the Heart of Christchurch  
August/September 1995 - 197



Pauline Rhodes *Remember Rwanda*  
August 1994



66 Gloucester Street Christchurch Phone 366 7261 Fax 366 7167

MIXED  
MEDIA

## Visa Gold Art Award 1995

Entry forms are now available at the Gallery for this year's Award. The competition is open to all painters resident in New Zealand and offers a \$15,000 first prize as well as three prizes of \$1,000 each. Entries close at 5.00pm on Friday 18 August 1995.

### "KATHERINE MANSFIELD, Modern Art and the Culture of France"

The Centre for Continuing Education at Canterbury University has scheduled this study tour to Southern England and France for 26 April - 27 May 1996. Further information is available from the Centre, ph: (03) 364 2163 fax: (03) 354 2057

### 1995 WALLACE ART AWARDS

The James Wallace Charitable Arts Trust was formed to support and encourage the Arts in New Zealand in general. The application form and conditions of entry for the 1995 awards are available at the Gallery. The winner will receive a \$10,000 cash award. (The work becomes the property of the Trust Collection.) The closing date for the Awards is Wednesday 20 September 1995.

### MARGARET OLROG STODDART

A major retrospective exhibition of work by this artist is in preparation by the Robert McDougall Art Gallery, Christchurch. The Gallery seeks information on the artist and the current whereabouts of her work. Those able to assist are asked to contact:

The Curator  
The Robert McDougall Art Gallery  
P O Box 2626  
Christchurch

### STAFF CHANGES

Kerry McCarthy who been a valuable member of the CSA staff for several years has left to become the acting Curator of Pictorial Archives at the Canterbury Museum. She will be replaced by Cressida Bishop who already works at the Gallery. Another long-serving staff member, Iain MacFadyen, has gone to work in Japan and Callum Pankhurst has become Gallery Assistant. We welcome back Marion Smith who is working on Saturdays.

### AUCTION

The CSA will be holding an exciting art auction at the beginning of October. This sale will include historical and contemporary New Zealand paintings and sculpture, and will also include selected outside entries.

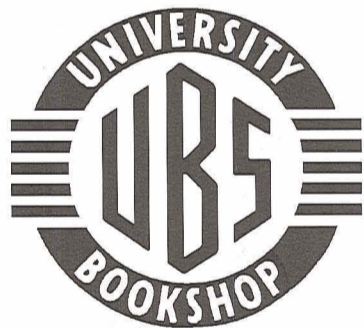
For several years now the CSA has been unable to purchase contemporary artwork for its Hire Collection. Proceeds from this sale will be used to re-vitalise this collection.

This will be an event not to be missed!

## NEW members

- Jan McFarlane
- Rachel Tobin
- Warren Robertson
- Marianne Thorpe
- Mr and Mrs Ken Johnson
- Greshame Carr
- Holly Ramsay
- Georgina Clark

## FIRST FOR CHOICE



BOOKS • ART • MUSIC  
University Drive, Ilam Phone 348 8579

- ◀ fine arts
- ◀ graphic arts
- ◀ design and
- ◀ drafting supplies

\* CSA member discounts!

Open Monday to  
Thursday 8:30 - 5:30  
Friday 8:30 - 6:00  
Saturday 9:00 - 12:30  
corner Manchester and St Asaph Streets  
Christchurch  
Facsimile (03) 365 7970  
Telephone (03) 366 0033

locally owned and operated

the drawing room

## THE SELLING GALLERY



Colin McCahon *Poem To Kaipara Flats*  
1977 750 x 1550

Warmest congratulations to our Director, Nigel Buxton, on his winning the second biennial Cranleigh Barton Drawing Award. We are fortunate to have two of Nigel's drawings in Drawing From Experience - an exhibition of 40 drawings from 17 artists of note.

Amongst some of the new works in the Selling Gallery are a splendid 1971 Colin McCahon painting - "Poem To Kaipara Flats", 750 x 1550, and Doris Lusk watercolours entitled, "Parador and Parador Tortosa" painted on her last trip to Europe in 1988, plus a figure study. There is also a Blythe Fletcher painting of the Otira Gorge, a Michael Smither study entitled "Diana", oil on board, and a Philip Truettum 'Peterborough' canvas.

Also in stock is a selection of paintings from the Invited Working Members Exhibition held in June. There are works by A A Deans, Robert Barnes, David Thomas, Ann Wilson, Don McAra, and Bill Moore.

Most of our members will be aware that one of joys of the Selling Gallery is the constant and ever changing range of very reasonably priced art, from 1900 historical landscapes to the most contemporary of work.

We welcome enquiries and visitors.

Selling Gallery Hours: Tuesday - Friday 11am - 5 pm.

Tel: Gillie Deans 366 7261 / (03) 318 8633 (ah)



FOR THE  
FINEST  
IN ART

For a well over half a century the famous Italian firm of MAIMERI have produced an unsurpassed collection of Fine Art materials for Europe's most discerning artists. Their superb colour ranges of oils, water colours acrylic and designers gouache include specialist restorer colours and pigments. These are complemented by MAIMERI's manakins, palettes, painting knives, varnishes and mediums as well as the aqua gloss acrylic colours.

In addition MAIMERI make no less that 25 different easels - field, table, studio and box model, each made with care and craftsmanship.

This famous range is now available to artists throughout New Zealand direct from the NZ agents.

brush-n-palette  
Artists Supplies Limited

134 Oxford Terrace Christchurch 1 Telephone 366 3088

RONALD  
MOTTRAM  
PICTURE  
FRAMER

253  
MOORHOUSE AVE  
BUS. 799 938

Artist Discounts  
Contemporary & Traditional Mouldings  
Conservation Framing  
Prompt, friendly service.

**PREVIEW**

**AUGUST 1995**

**SEPT 1995**

MON	TUES	WED	THURS	FRI	SAT	SUN
	1	2	3	4	5	6
7	8	9	10	11	12	13
14	15	16	17	18	19	20
21	22	23	24	25	26	27
28	29	30	31			

5.30 CSA GALLERY

MON	TUES	WED	THURS	FRI	SAT	SUN
				1	2	3
4	5	6	7	8	9	10
11	12	13	14	15	16	17
18	19	20	21	22	23	24
25	26	27	28	29	30	

**COMING EXHIBITIONS**

8 - 13 AUGUST 1995

**THE ART OF WAR**

A New Zealand Remembers Project  
This major exhibition will comprise fifty pieces of art from around New Zealand and Australia. Many of the art works in the collection will not have been viewed by the public before. Part of the display will be devoted to honouring the memory of Charles Upham VC and Bar.

A public contest is being held in conjunction with the display and will be judged prior to the exhibition. The winning entry will be included in the exhibition. There will be eight groups consisting of six paintings each. These will be:- Army, Navy, Air Force, Uniforms, New Zealand War Artists, Australian War Artists, Home Front, and the Charles Upham Art Competition.



The Art of War  
*Officer of the New Zealand Artillery circa 1937*

30 AUGUST - 10 SEPTEMBER 1995

**THE PRIMARY SCHOOLS' ART COMPETITION**

Theme - "BUILDINGS IN CANTERBURY"

- Criteria**
- Creative Imagination
  - Originality
  - Design Presentation
  - Creative Use Of Media

It gives me great pleasure to offer your S1 to S4 classes the opportunity to participate in the second annual primary school art competition. Following the overwhelming popularity of last year's scholarship, I have decided to retain the same format, which was developed in consultation with several specialists in the field of art to ensure the criteria are clear and easily understood.

My major objective in offering this annual scholarship award is to help raise the profile of primary school art. The winning entry will be utilised for a variety of promotional purposes over the forthcoming year. Also, the \$2,000 grant to the winning school will make a substantial contribution toward any art related projects. This art scholarship is now into its second year. Last year's "A Picnic in Canterbury" theme proved an outstanding success with around 1,400 Canterbury primary school students submitting a very high standard of entries.

Twenty finalists from this year's competition will be on display at the CSA Gallery during the August school holidays. Be sure not to miss what promises to be a very exciting exhibition of Children's art.

13 - 30 SEPT 1995 PREVIEW TUESDAY 12 SEPT 5.30PM

**PAULINE RHODES  
INSTALLATION: STAINED  
SILENCES**

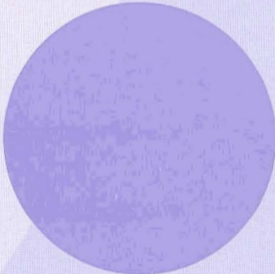
These Installation Projects consist of accumulations of various kinds of matter and materials brought together as entities within a specific context and duration. They form an on-going continuum extending from, and relating back to, former work.

The work operates on the edges of the categories of sculpture, painting and drawing, and is haunted by language. It questions art's ability to articulate effectively within any specific definition, and acknowledges its function to point to the undefinable areas within human experience, changing attitudes and sensibilities.

*Pauline Rhodes*



*Installation: Remember Rwanda  
STIMULUS TO STYLE.*



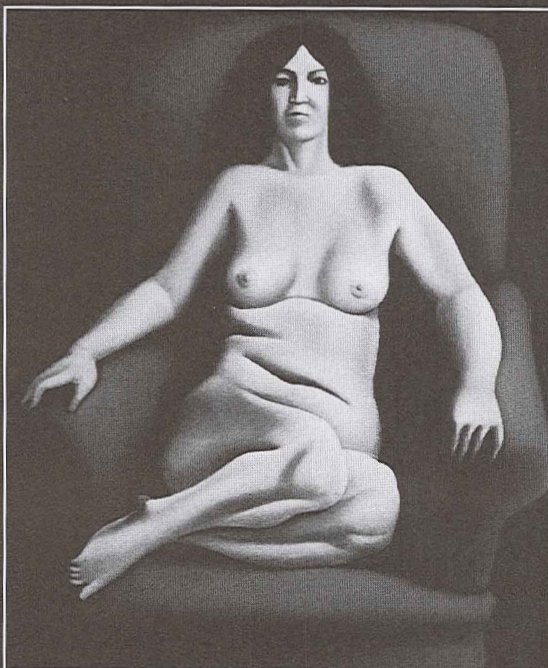
**The Primary Schools' Art Competition:**  
Kingston Kim of Somerfield Primary School the winner of the inaugural *Shane Aitken Primary School Art Scholarship*. He is pictured with sponsor, Shane Aitken.



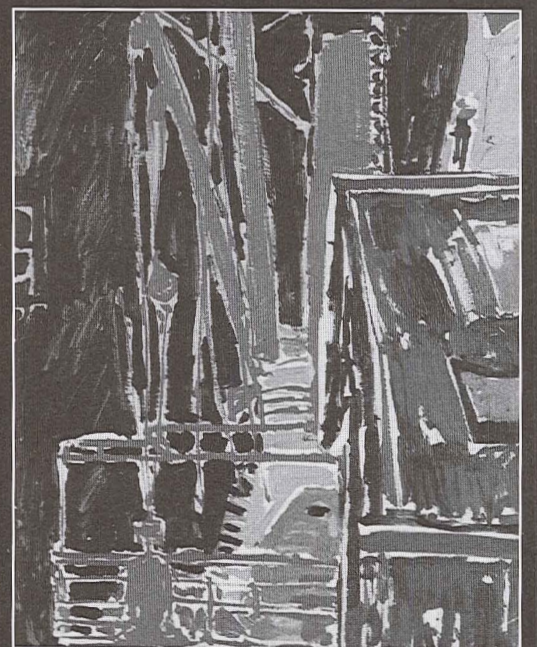
**THE SELLING GALLERY**



*Doris Lusk Parador 1988 Watercolour \$4,250.00*



*Michael Smither Diana Oil on Board \$4,725.00*



*Philip Trusttum Cranes 1974*