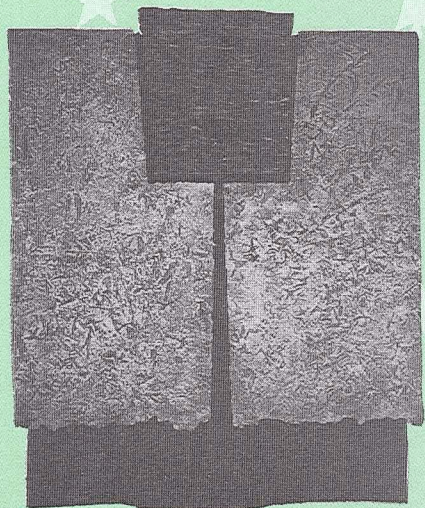


COMING EXHIBITIONS

PREVIEW

Art in the Heart of Christchurch

DECEMBER 1992 —
JANUARY 1993 173



Bill Cumming "Untitled"



66 Gloucester Street Christchurch Phone 366-7261 Fax 366-7167

NEW members

Lynnley Ann Driver
Moya Hansby
Tanya Carswell
Mr and Mrs E. and F Vertue
Doctor D. and Debbie Kerr
Joanne Greig

MIXED MEDIA



JOHN T'S ARTVENTURE TOURS 1993

"LEARN TO LIFT YOUR
PAINTING TO ANOTHER
LEVEL"

Artventure Tours are suited to both amateurs and professionals. Applicants should have at least established a working knowledge and ability in the art of painting. Tours available are:
WARRIWILLAH: an Art Centre Homestead in N.S.W. Australia.

FLINDERS ISLAND: A superb natural resort in the Bass Strait. Tutor Max Angus.

"LA ROMITA" Paintings in the Italian Hill

Country. Staying at a sixteenth century monastery converted into modern quarters. Situated in a mountain side above the town of Terni between Rome and Florence.

BALI: Painting tutor Jeff Makin staying at Ananda Cottages in the hills above Ubud.

Jeff Makin is one of Australia's leading landscape painters.

THE FLINDERS RANGES: Tutor Guy Warren travelling by 4WD through the Australian outback.

Details on these tours are available from the CSA Gallery reception.

Seasons Greetings

The Council, Director and staff of the CSA wish members and clients a very happy Christmas and safe relaxing holiday.

STAFF CHANGES

Joan Gabara has been appointed Sales Consultant as from the beginning of November. Joan has a background in her own antiques business and corporate sales experience. She looks forward to meeting members, artists and clients. Please feel free to seek Joan's advice and help in choosing an artwork for your own collection, a gift or for an investment portfolio.

Grant Banbury recently concluded 12 years employment at the CSA. During that time Grant made a significant contribution to the CSA and the visual arts in Christchurch through his work at the gallery. Many members will recall the high standards Grant Banbury brought to installing exhibitions and curating various shows such as "The Chair Show", "Real/Surreal", "Drawing by Sculptors" and numerous other memorable exhibitions. Grant worked in almost all aspects of the gallery's business during his time at the CSA.

As the work was primarily part-time he also continued his own art which was recognised by the Olivia Spencer-Bower Award and more recently the ALT Award. His work is currently in the "Prospect Canterbury '92" exhibition at the Robert McDougall Art Gallery.

FREE ADMISSION

At a recent meeting of the CSA Council it was agreed that the CSA should no longer charge admission to the gallery. Previously there had been a charge of \$2 to enter and it has proved to be a significant deterrent to people who want to visit the gallery. The members survey did not indicate that free admission to the gallery was a major reason to join the CSA. Most important was a commitment to supporting the visual arts in Canterbury. Admission will be charged for special exhibitions and members will receive discounts.

CHRISTMAS AND HOLIDAY HOURS

The CSA Gallery will close on Thursday 24 December at 5.30 pm and will re-open on January 11 from 2-5.30 pm until January 18 when normal hours will resume. During the period when the gallery is closed messages can be left on the gallery answerphone which is checked frequently.

GALLERY HOURS

Monday-Friday 10am-5.30pm
Saturday-Sunday 2pm-5.30pm
Note change in Saturday hours.

RONALD
MOTTRAM
PICTURE
FRAMER

253
MOORHOUSE AVE
BUS 799-938

Artist Discounts

Contemporary & Traditional Mouldings
Conservation Framing
Prompt, friendly service

lockley's is often called an

Artist's Haven

A Complete Range of Artist's Supplies. Stockists of Windsor & Newton Artists Materials.

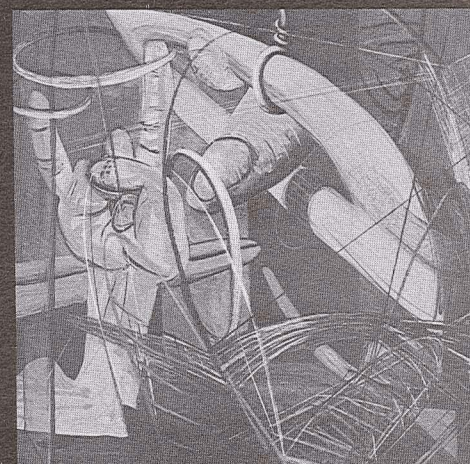
Lockleys

DRAWING & GRAPHIC SUPPLIES LTD

Cnr Manchester & St Asaph St
P.O. Box 880, Christchurch. Phone 366 0033
Open Friday until 8pm & Saturday Mornings.



SELLING GALLERY
WORK IN STOCK



ROBERT McLEOD, "High School Exercises No. 7" \$2,050

The Selling Gallery is situated on the ground floor leading off the Canaday Gallery. All artworks displayed in the Selling Gallery are for sale. Members receive a 10% discount on any purchase. Works can be taken home on approval at no obligation.

The Selling Gallery Consultant Joan Gabara is available to advise on purchasing art for home or offices. We currently have new stock of works by Doris Lusk, Rudolf Gopas, Elisabeth Buchanan, Catherine Brough, Gordon Crook and many other well known New Zealand artists.

If you have any enquiries please feel free to call Joan Gabara or Chris Taylor on 366-7261 or 366-7167.
After hours: Joan Gabara 355-4780, Chris Taylor 355-5724



FOR THE
FINEST
IN ART

For well over half a century the famous Italian firm of MAIMERI have produced an unsurpassed collection of Fine Art materials for Europe's most discerning artists. Their superb colour ranges of oils, watercolours, acrylic and designers gouache include specialist restorer colours and pigments. -these are complimented by MAIMERI's manakins, palettes, painting knives, varnishes and mediums as well as the matchless range of Fabriano watercolour blocks. In addition MAIMERI make no less than 25 different easels - field, table, studio and box models, each made with care and craftsmanship. This famous range is now available to artists throughout New Zealand direct from the NZ Agents.

brush-n-palette

Artists Supplies Limited

134 Oxford Terrace Christchurch 1 Telephone 663-088



CANTERBURY'S FINEST
ART BOOK EMPORIUM

ABRADALE, ABRAMS, APERTURE, KNOPF,
KODANSHA, LITTLE BROWN, RIZZOLI,
TWELVETEETHS, TWIN PALMS, WATSON-
GUPTILL, WEIDENFELD & NICOLSON,
THAMES & HUDSON

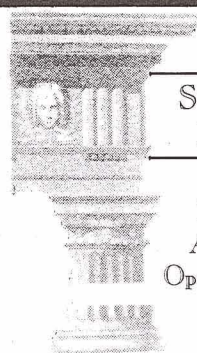
UNIVERSITY BOOKSHOP

Mon-Fri 8.30 a.m.-5.30 p.m., Sat 10 a.m.-3 p.m.

Private Bag
Christchurch

University Drive
Btwn Clyde & Ilam Rds

Phone 348-8579
Fax 348-8851



SCORPIO
BOOKS

For Art &
Architecture
Open Seven Days



DECEMBER

MON	TUES	WED	THURS	FRI	SAT	SUN
	1	2	3	4	5	6
7	8 <i>previews C.S.A. 5.30pm</i>	9	10 <i>previews C.S.A. 5.30pm</i>	11	12	13
14	15	16	17	18	19	20
21	22	23	24	25	26	27
28	29	30	31			

JANUARY

MON	TUES	WED	THURS	FRI	SAT	SUN
				1	2	3
4	5	6	7	8	9	10
11	12	13	14	15	16	17
18	19	20	21	22	23	24
25	26	27	28	29	30	31

Coming Exhibitions

9 DECEMBER-17 JANUARY 1993 PREVIEW TUESDAY 8 DECEMBER 5.30PM

BILL CUMMING NEW WORKS

The new work continues my interest in using paper as a three dimensional medium. This exploration of the material qualities of paper is combined with images and ideas from the Westland landscape. Lone mature trees monumental sentinels, the remains of gold mining, river terraces, groups of young Kahakitea, textures and colour.

Almost all the paper used is handmade from cotton pulp. This important aspect has meant a return to a basic starting point in the planning and resolution of these works. Casting pieces both for specific surface qualities, shapes and forms. The impetus for these works started two years ago when I spent two weeks at the Hobart Art School paper mill. Much of the work is experimental. The journey has been full of frustrations as I push and explore the limits of paper making and multi-media surface textures.

The imagery of these works springs from the Westland landscape which is a deep part of me. This landscape is forever changing and timeless. It contains its own paradox of being monumental and fragile. Human invasion has not had the impact apparent in other landscapes, consequently the geometry of human construct is a striking contrast to the elegant and monumental forms of Westland. My goal is that each work is a strong visual statement that satisfies in its whole and parts.

Bill Cumming "Untitled"



9 DECEMBER-20 DECEMBER PREVIEW TUESDAY 8 DECEMBER 5.30PM

GREG NUTHALL CLOUDS THE PHOTOGRAPHERS PAINT BRUSH

Clouds have immense emotional & physical impact on life. As a part of the landscape (Human environment) that is always moving & changing they are a significant & integral part of life. In this exhibition I explore the relationships they form with the landscape.

AOTEORO A — THE COAST

The coast has always been an integral part of New Zealand culture & society. This is a series of five photographs depicting the coastline at the southern end of the North Island.

ELEMENTS OF THE LANDSCAPE

Society, culture and life in general is governed by

the way in which each object & idea is related to any object & idea. Landscapes can be divided into elements: Rocks & Earth, Sky & Clouds, Vegetation, and Water. In part 2 of this exhibition I explore the relationships of each of these elements.



Greg Nuthall

As a child I used to explore new places with the visual fascination of all children. One of the games I used to play was lining up elements of the landscape & by doing this connecting two seemingly unrelated objects. This part of the exhibition is a natural extension of this childhood game.

JO SUTHERLAND

I have always wanted to exhibit some of my work and this is my first solo show. I am working in wood, carved and constructed, to produce large sculptural pieces.

My work has evolved from calligraphic, vaguely figurative images to tree and rock forms currently. The theme common to all my work has been humankind's relationship with nature from a largely aesthetic viewpoint but now I am interested in recreating an atmosphere of nature with a little more power of her own. I want to share with others my passion for the things I sense within the natural world. This time it is the power of nature to nurture and destroy.

I wish to thank the Queen Elizabeth II Arts Council for their assistance.

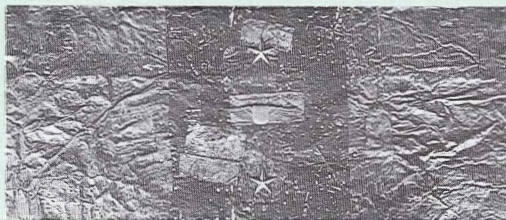
11 DECEMBER-31 JANUARY 1993 PREVIEW THURSDAY 10 DECEMBER 5.30PM

CHRISTMAS NEW YEAR SHOW

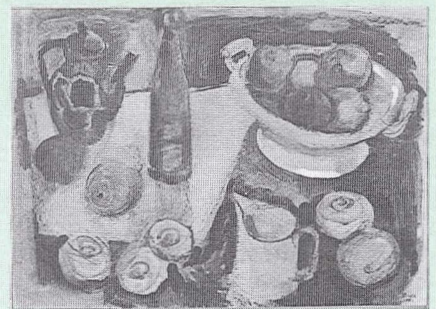
You are warmly invited to the annual Christmas New Year Show. This year we will be showing works in a variety of media including ceramics, prints, paintings and sculpture.

All new works with a light hopeful theme. We hope to see you there.

Blair Jackson
"Wings, Stars and Bars"



Doris Lusk
"Still Life"



18-20 DECEMBER

MUKA YOUTH PRINTS

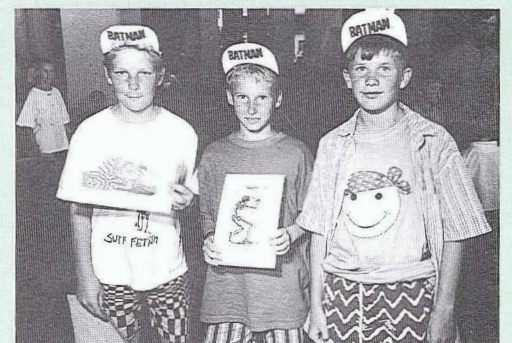
Muka Youth Prints, an annual exhibition featuring original works by leading (adult) contemporary artists with the aim of making original art available to and affordable for young people aged five to eight will be showing at the CSA December 18 and 19, 10am-5.30pm and December 20, 2-5.30pm.

To encourage young people in their individual choice adults will not be allowed into the exhibition space and artists signatures will be covered up.

The works are small in size (10x20cm) but uncompromised artistically, the only

accommodation made for young people has been to their pockets. The full colour lithographs are sold exclusively to young people, the price: \$35 (estimated value \$150-\$300).

The only exception to the "no adults" rule is for schools and other organisations (e.g. Children's hospitals) directly involved with young people. This year's exhibition is an entirely new show and includes works by New Zealand artists Philippa Blair, Pat Hanly, Pamela Wolfe, Claudia Pond-Eyley, Kura Te Waru Rewiri and Richard McWhannell. Australians include: Tim Johnson, Fred Cress, Sally Smart, Giuseppe Romeo and Richard Stringer. The first European artist to "take up the challenge" is Dane Michael Moerk.



Photograph: Gil Hanly