

COMING EXHIBITIONS

PREVIEW

Art in the heart of Christchurch

MACMILLAN BROWN LIBRARY
N
3978
L229

Albrecht Dürer
OCTOBER 1992
Faber-Castell
171

CSA GALLERY

66 Gloucester Street Christchurch Phone 366-7261 Fax 366-7167

members
NEW

Sue Pearce
Sue Currie Blakely
Fiona Gibb
Dorenda Sweeney

MIXED MEDIA
PENCILS

Buy a unique artwork — giant 'pencils' from the Sharp Art Party. Only five left. Call Kerry for details now!

KEVIN CAPON PHOTOGRAPHIC SEMINARS
Further information and booking details are available at the Gallery for this course of seminars running throughout New Zealand during 1992. The Christchurch programmes are scheduled for 3-4 October ('Developing Creative Potential'), 10-11 October ('Camera and Darkroom') and 19-20 December ('Portraiture and Still-Life').

SOUTH CANTERBURY ARTS SOCIETY 40TH ANNUAL EXHIBITION 1992
Two \$500 awards are offered in this year's South Canterbury Arts Society Exhibition. Entry forms and eligibility details are now available at the Gallery.
Final receiving day for works:
Wednesday 21 October
Opening: Saturday 31 October at 7.30pm
Closing: Sunday 15 November at 3.00pm

OTAGO ART SOCIETY COOPERS & LYBRAND SPONSORED ART EXHIBITION
An Award of \$1,500 and two of \$500 each are offered in this exhibition, to take place in Dunedin during October this year. Entry forms are now available at reception.
Final day for Entry Forms: Saturday 3 October
Final Receiving Day: Monday 5 October

Award Ceremony: Thursday 15 October
Exhibition Closes: Friday 23 October 2.30pm

RECITAL OF FRENCH AND ENGLISH MUSIC
To be held at the CSA at 7.30pm on Sunday 4 October
FEATURING
Rachel Doig — Soprano
Graham O'Brien — Tenor
Tom Griffiths — Piano
Celia Stewart — Flute
\$8.00 Waged \$5.00 Unwaged

SHARP ART PARTY PHOTOGRAPHS
This year's Sharp Art Party proved to be a most enjoyable and successful event. Two photographers were present throughout the evening and their photographs are now available for viewing at reception, where reprints may also be ordered.

ADMISSION
Non-members \$2.00
Students \$1.00
Members Free

GALLERY HOURS
Monday-Saturday 10am-5.30pm
Sunday 2pm-5.30pm

1992 Canterbury Porcelain Art Association Inc.
Exhibition of Hand Painted China

Noah's Hotel	Admission \$3
Friday 2 October	10am-8pm
Saturday 3 October	10am-8pm
Sunday 4 October	10am-4pm

DEMONSTRATIONS
RAFFLES
SALES TABLE

SCORPIO BOOKS

For Art & Architecture
Open Seven Days

RONALD MOTTRAM
PICTURE FRAMER

253
MOORHOUSE AVE
BUS. 799-938

Artist Discounts

Contemporary & Traditional Mouldings
Conservation Framing
Prompt, friendly service

One of the largest ranges of drawing equipment, art supplies, stationery, precision draughting equipment, art papers and boards in Christchurch.

Our extensive range of top brand products together with our backup expertise and service make us one of the most comprehensive outlets in town.

For your next drawing, draughting or artistic project . . .

MAKE IT A RULE
Lockleys
DRAWING & GRAPHIC SUPPLIES LTD

Cnr Manchester & St Asaph St,
Christchurch
P.O. Box 880, Telephone 660-033

CSA GALLERY

WORK IN STOCK

PETER CLEVERLEY, 'Love You', oil paint and carbon on ply

FOR THE FINEST IN ART

For well over half a century the famous Italian firm of MAIMERI have produced an unsurpassed collection of Fine Art materials for Europe's most discerning artists. Their superb colour ranges of oils, watercolours, acrylic and designers gouache include specialist restorer colours and pigments. -these are complimented by MAIMERI's manakins, palettes, painting knives, varnishes and mediums as well as the matchless range of Fabriano watercolour blocks. In addition MAIMERI make no less than 25 different easels - field, table, studio and box models, each made with care and craftsmanship. This famous range is now available to artists throughout New Zealand direct from the NZ Agents.

brush-n-palette
Artists Supplies Limited

134 Oxford Terrace Christchurch 1 Telephone 663-088

SMITHS BOOKSHOP
Wide Selection of New Zealand and International Art books
Out of Print, book search and title request services.
Catalogues issued.
General literature and reference books.
New Zealand fact and fiction.

133 Manchester Street, Christchurch 1. Phone (03) 797-976

CANTERBURY'S FINEST ART BOOK EMPORIUM

ABRADALE, ABRAMS, APERTURE, KNOPF, KODANSHA, LITTLE BROWN, RIZZOLI, TWELVETREES, TWIN PALMS, WATSON-GUPTILL, WEIDENFELD & NICOLSON, THAMES & HUDSON

UNIVERSITY BOOKSHOP
Mon-Fri 8.30 a.m.-5.30 p.m., Sat 10 a.m.-3 p.m.

Private Bag Christchurch
University Drive Btwn Clyde & Ilam Rds
Phone 348-8579
Fax 348-8851

ANDREW GORDON, 'Small Scaled Notothenid', acrylic on paper

The Selling Gallery is situated on the ground floor, leading off the Canaday Gallery. If you wish to view or buy an artwork from our extensive stock, talk to Grant Banbury, our gallery consultant, or enquire at reception. Phone (03) 667-261 for an appointment. 66 Gloucester Street, Christchurch. Fax (03) 667-167. We are also happy to sell artworks on your behalf.

OCTOBER

MON	TUES	WED	THURS	FRI	SAT	SUN
			1	2	3	4
5	6	7	8	9	10	11
12	13	14	15	16	17	18
19	20 <i>8pm preview CSA</i>	21	22	23	24	25
26	27	28	29	30	31	

Coming Exhibitions

30 SEPTEMBER-18 OCT 1992 PREVIEWS TUES 29 SEP 5.30PM

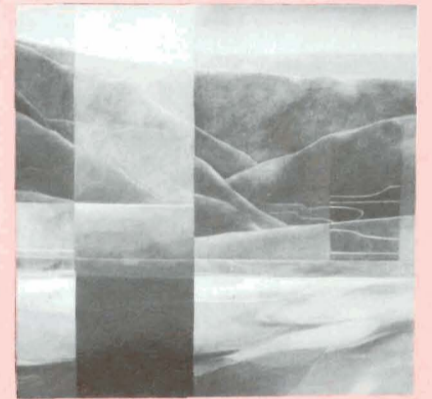
CHRIS LANGLEY
SCULPTURE

ELISABETH BUCHANAN
RECENT WORKS

This series of paintings further explores the impact of technology on the landscape — in this

case the damming of a river and the formation of a new lake. The land, which has remained virtually unchanged for thousands of years, is now in the process of rapid change. For a brief and unique period its past, present and future images can plainly be seen. From its inception, controversy and problems have surrounded this project, and only time will tell if the wild river has been finally tamed, and the land subdued.

Elisabeth Buchanan, 'Lakefill', 1992, 1m x 1m



20-25 OCTOBER 1992

NEW ZEALAND INSTITUTE OF ARCHITECTS AWARDS EXHIBITION

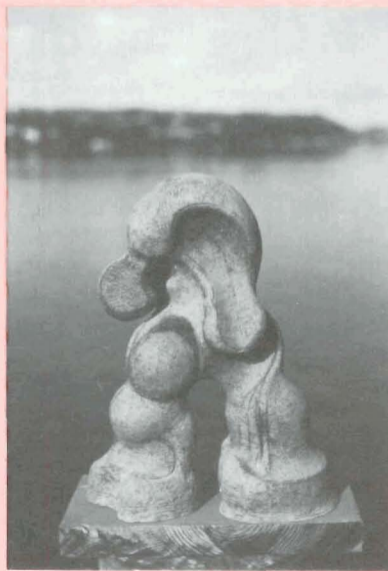
21 OCTOBER-1 NOVEMBER 1992 PREVIEWS TUESDAY 20 OCTOBER 8PM

JONATHAN LOVERING
SCULPTURAL WORKS

This is an exhibition of sculptures selected from work compiled over the last two years. The majority of these sculptures are made from ceramic with the exception of two metal castings.

My working process is based upon a steady development of ideas. As a sculpting medium, ceramic has provided me with a quick and fluent means of developing and resolving my ideas. The works in this exhibition are figuratively based.

They have been glazed and finished in a naturalistic manner, with a strong emphasis on texture and line.



Jonathan Lovering, 'talk the talk', 1991, 45 x 30cm, ceramic

COLIN REDMOND

In 1975 Robert McDowell encouraged me to try painting. Under his guidance I commenced and painted a wide range of subjects mainly in oils.

After travelling the South Island painting I needed more experience and attended the University Extension Courses at Kurow, Dunedin and Christchurch and was tutored by Doris Lusk, Don Binney, John Coley and Don Peebles.

I have won three merit awards in the last five years at the Ashburton Annual Exhibition and have attended many of their weekend schools. I am also a Working Member of the CSA and past president of the Ashburton Art Society.

Colin Redmond



CSA ANNUAL SUMMER EXHIBITION

This is the second of our two annual Working Members' exhibitions for 1992. Entry forms were posted out with the last edition of PREVIEW (No. 170). If you are a Working Member of the Canterbury Society of Arts or another Art Society but did not receive an entry form last month, please contact Kerry at the Gallery and one will be posted out.

ALISON RYDE
LITHOGRAPHS

Printed at Limeworks Lithograph Studio. A small exhibition of hand painted lithographs produced over the last 3 years with the help of Limeworks Studio. Some cityscapes, landscapes, interiors — all at reasonable prices.