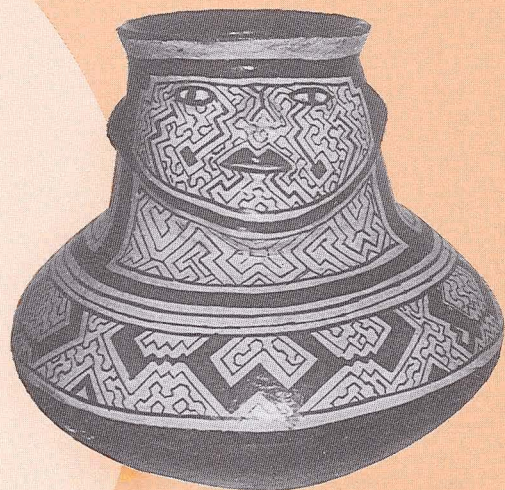


COMING EXHIBITIONS

# PREVIEW

Art in the Heart of Christchurch

JULY 1992 168



Shipibo Pot from Trade Aid's 'Minka' Exhibition



66 Gloucester Street Christchurch Phone 667-261 Fax 667-167

**NEW** members

Geoffrey Bradley  
John Oxley Dean  
Francis Arden Callear  
Andrew Cumming  
Mrs Pam Armstrong  
Mr & Mrs A. W. and I. M. Ward  
Mandy V. A. Somerville  
Brenda Visser  
G. J. Collins

**GALLERY HOURS**  
Monday-Saturday 10am-5.30pm  
Sunday 2pm-5.30pm

**ADMISSION**  
Non-members \$2.00  
Students \$1.00  
Members Free

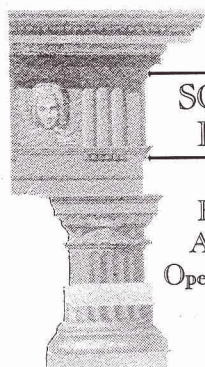
MIXED MEDIA

## AKAROA SPRING SCHOOL

September 7-11 1992

A wide variety of classes are offered in this year's Akaroa Spring School, including such diverse topics as Yoga, Painting, Pottery, Quiltmaking, Interior Decoration, Residential Writing and Computing. An emphasis is placed on learning in an informal and social environment. An information booklet is available for reference at the Gallery or may be obtained from The Secretary, Akaroa Community Arts Council, PO Box 46, Akaroa.

Telephone (03) 304-7316  
or (03) 304-7245.



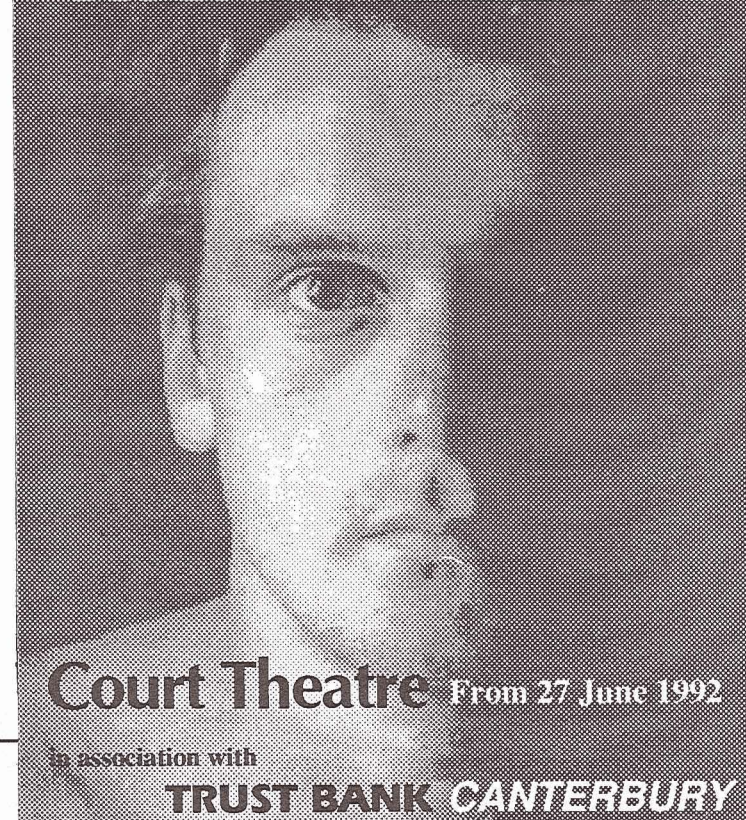
SCORPIO BOOKS

For Art & Architecture  
Open Seven Days

## CSA ANNUAL OPEN EXHIBITION

The Open show is to take place later this month. Associate Members should have received an entry form with the last issue of PREVIEW (Number 167). If you did not or are not currently registered as an Associate Member but would like to be, please call Kerry at the Gallery (ph 667-261).

## HAMLET



**Court Theatre** From 27 June 1992

in association with

**TRUST BANK CANTERBURY**

unique  
exotic  
out of the ordinary  
crafts from co-operatives

Latin America Asia Africa Pacific

**Trade Aid Shops**  
*Working for a just world through fair trade*

City - The Shades, 112 Hereford St, Ph 791-982  
Riccarton - 88b Riccarton Rd, Ph 348-1567  
and throughout Aotearoa/New Zealand



**FOR THE  
FINEST  
IN ART**

For well over half a century the famous Italian firm of MAIMERI have produced an unsurpassed collection of Fine Art materials for Europe's most discerning artists. Their superb colour ranges of oils, watercolours, acrylic and designers gouache include specialist restorer colours and pigments. -these are complimented by MAIMERI's manakins, palettes, painting knives, varnishes and mediums as well as the matchless range of Fabriano watercolour blocks. In addition MAIMERI make no less than 25 different easels - field, table, studio and box models, each made with care and craftsmanship. This famous range is now available to artists throughout New Zealand direct from the NZ Agents.

**brush-n-palette**

Artists Supplies Limited

134 Oxford Terrace Christchurch 1 Telephone 663-088

One of the largest ranges of  
drawing equipment, art supplies,  
stationery, precision draughting  
equipment, art papers and boards  
in Christchurch.

Our extensive range of top brand products together with our backup expertise and service make us one of the most comprehensive outlets in town.

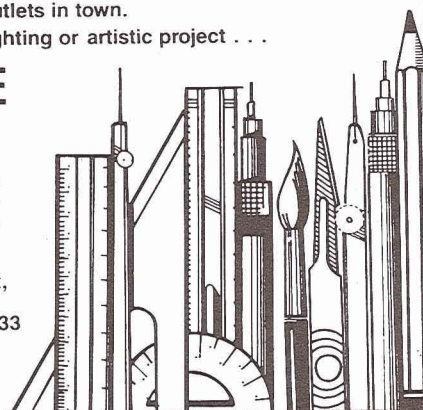
For your next drawing, draughting or artistic project . . .

**MAKE IT A RULE**

**Lockleys**

DRAWING & GRAPHIC SUPPLIES LTD

Cnr Manchester & St Asaph St,  
Christchurch  
P.O. Box 880, Telephone 660-033



## SMITHS BOOKSHOP

Wide Selection of New Zealand  
and International Art books

Out of Print, book search and  
title request services.

Catalogues issued.

General literature and reference books.

New Zealand fact and fiction.

133 Manchester Street, Christchurch 1. Phone (03) 797-976

## UNIVERSITY BOOKSHOP

**fine art books  
prints  
artists supplies**

OPEN  
Mon.-Fri. 8.30-5.30  
Sat. 10.00-3.00

University Drive  
(Btwn Clyde & Ilam Rds)  
Ph: 348-8579  
Fax 348-8851

Mail & Fax Orders Welcome



WORK IN STOCK



John Coley, 'Cityscape in Grey, Browns and Green', oil on canvas

The Selling Gallery is situated on the ground floor, leading off the Canaday Gallery. If you wish to view or buy an artwork from our extensive stock, talk to Grant Banbury, our gallery consultant, or enquire at reception. Phone (03) 667-261 for an appointment. 66 Gloucester Street, Christchurch. Fax (03) 667-167. We are also happy to sell artworks on your behalf.



# JULY

MON	TUES	WED	THURS	FRI	SAT	SUN
		1	2	3	4	5
6	7	8	9	10	11	12
13	14	15	16	17	18	19
20	21	22	23	24	25	26
27	28	29	30	31		

*Preview C.S.A. 5.30pm*  
*Preview C.S.A. 8pm*

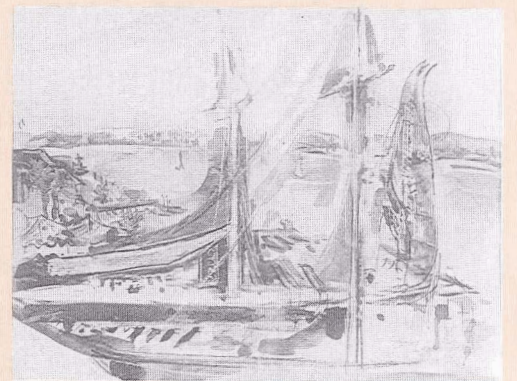
## Coming Exhibitions

14-19 JULY 1992 PREVIEW MONDAY 13 JULY 5.30PM

### JAN CHAFFEY

**SAN DIEGO CHALLENGE**  
In March this year, alone in a marina in San Diego . . . "What am I doing here?" I simply couldn't resist it — I'd thought about it for several years.

I needed to visit each international yacht venue, with no time to backtrack. Nippon and Sweden were painted in the rain. Spain from the Conference Centre, France had such style, even from the sidewalk. The Kiwis flew the flag upon request. I could see the Aussie keel, not so Il Moro's. Here is my record.



Jan Chaffey, 'Kiwis at Coronado'

22 JULY-2 AUGUST 1992 PREVIEWS TUESDAY 21 JULY 8PM

### MINKA

**AN EXHIBITION OF PERUVIAN HANDCRAFTS PRESENTED BY TRADE AID.**

The artistic traditions of the ancient Peruvian cultures continue today in the work of the craftspeople of modern Peru. The making of craft is an integral part of the everyday lives of many Peruvian people who manufacture for their own domestic use, and for sale to supplement their meagre subsistence incomes.

Trade Aid's Peruvian partner, Minka, has put together a collection of fine quality craft — including intricately woven tapestries from the high Andes, carved gourds from Huancayo and distinctive handcrafted pots from the Amazon.



Shipibo Pots

### MARY DODWELL

My paintings are about colour and tonal values and their effect on perspective. Working with the palette knife has rewarded me with the clarity of colour I needed and a wonderful textural quality.



Mary Dodwell

### CSA ANNUAL OPEN EXHIBITION

Contributions for the Annual Open Exhibition are invited from our Associate Members. The Artists' Committee of the CSA Council will select the works to be exhibited and new Working Members will then be chosen from the pieces in this exhibition.

### A. J. PEARSON

In this series of paintings I have dealt with an ostensibly rural subject; the imagery generally dealing with man in relation to the land. However, the subject matter is not so much about the "land as hero", but about the physicality of existence. Heroic in one respect — endurance. Pathetic in another — inevitable defeat and decay. Although I conceived and completed these paintings while in a rural setting (Wellsford), I don't see my work as Regionalistic as it is not about a specific place or time, but more to do with an attitude to space and time.



A. J. Pearson, 'One Foot in the Grave', oil on canvas

### MICHELLE LAWRENCE

A non-sentimental treatment of still-life which relates to a rural theme is the direction that my work currently takes. The earthen mound of a fresh grave functions as the still life subject, but more importantly it is the vehicle to investigate tension and the inter-relationship of the figure and ground, or in this instance the jar and earth. I treat the picture surface consistently, relating one area of the canvas to another. Yet an object still appears isolated within the paint ground, accentuating its ordinary character, affirming its simplicity.



Michelle Lawrence

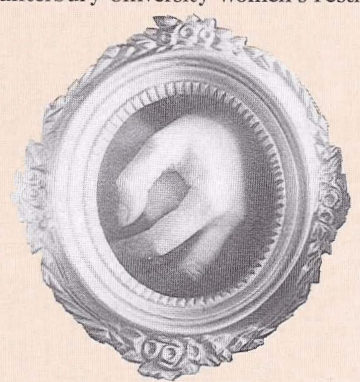
### emBODY

emBODY is a collection of work by young women living in Christchurch, offering a range of media, theme and venue.

emBODY is an exhibition in several parts. All parts run concurrently in different venues, providing a diversity of opportunity to audiences and art-makers alike.

As well as the CSA exhibition, works will be exhibited at the Mermaid Shop (upstairs, 87 Cashel Street Mall) and another venue still to be confirmed. Details will be available at the CSA opening.

emBODY is organised in conjunction with the Canterbury University Women's Festival.



emBODY