

NEWS

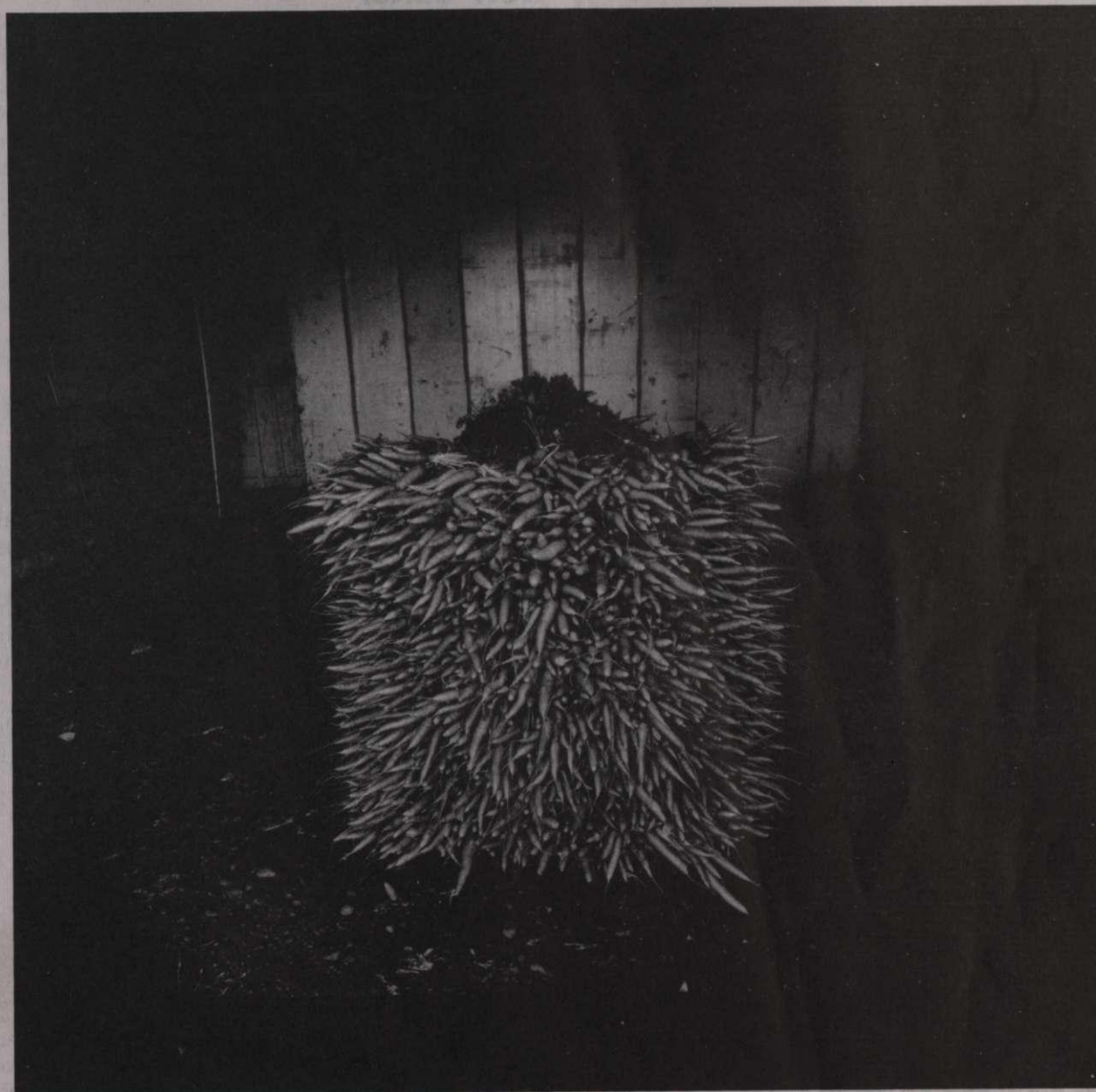
The journal of the Canterbury Society of Arts
66 Gloucester Street Telephone 67 261
PO Box 772 Christchurch New Zealand

Number 99 August/September/October/November 1981

Society Officers

Patron	The Hon. Sir David Beattie G.C.M.G., Q.C.
President	Miss Olivia Spencer-Bower
Vice Presidents	Doris Holland John Coley, Dip. F.A., Dip. Tchg. Michael Eaton, Dip. Tchg. W.W. Cumming Derek Hargreaves, B.Com., A.C.A. Simon Stammers-Smith, LL.B.
Council	Judge Fergus Paterson John Trengrove, Dip. Arch., F.N.Z.I.A. Nola Barron John Vial, Dip. Arch Jewel Oliver Jill Dando John Hurrell, B.A., Dip. F.A. David Sheppard, M. Arch., M.C.P. (Penn), A.N.Z.I.A., M.N.Z.P.I., R.I.B.A.
Director	Nola Barron
Hon. Secretary	Mel Pritchard, M.B.E.
Gallery Assts.	Grant Banbury, Dip. F.A. Hons Evan Webb, Dip. F.A. Barbara Robinson
Receptionist	Rona Rose
Tutors	Nan Crawley, Dip. F.A. Bernice Wilson, Dip. Tchg. Emily O'Connor Michael Ebel
Editor	Michael Ebel

Registration at Post Office HQ Wellington as a
Magazine



John Hawkhead

PRINTS...

FRAMING...

RESTORING...

For Selection...

F I S H E R S

ART DEALERS for 111 YEARS

ORIGINALS...

We SELL ALL TYPES

We VALUE & BUY

We EXPERTLY FRAME

We CLEAN & RESTORE

H. FISHER & SON LTD

Fine Art Dealers 691 Colombo Street

(Between Cashel & Hereford Streets)

New Editor

We are pleased to announce that Michael Ebel has agreed to edit the News from this issue.

Kate Fraser who has so ably and efficiently been our editor for some years has heavy commitments in writing for the press. We thank her sincerely for her work and co-operation, and wish her every success.

Farmers' Donation

As a mark of appreciation for the Gallerys' part in organising the recent Farmers Weaving Awards, the Board of the New Zealand Farmers Co-operative Association of Canterbury has donated \$500 to the Society.

Combined with the generous prizes and the purchase of a large hanging for their offices, the Farmers have given tremendous encouragement to the weavers of New Zealand.

We thank the Board for the donation and their sponsorship, and all who contributed to the success of the exhibition.

A.N.Z.A.R.T.

Fifteen overseas artists, mainly from Australia and other New Zealand artists have been invited to Christchurch between 20-28th August to take part in an art event featuring film performances, workshop seminars and lectures. Everyone interested is invited to take part.

Further information from papers, or from the A.N.Z.A.R.T. office in the Arts Centre, 60-989.

Cashmere Gallery

12 Colombo Street
at the foot of the hills
for

**Pottery by N.Z. Exhibition Potters
Paintings, Jewellery, Handcrafts, Lamps**

BEALEY GALLERY

Quality Picture Framing
Exhibition Pottery
Christies Contemporary Art

Director : John Simpson 132a Victoria St
Telephone 67-506 P.O. Box 25045
Private 583-351 Victoria St Christchurch

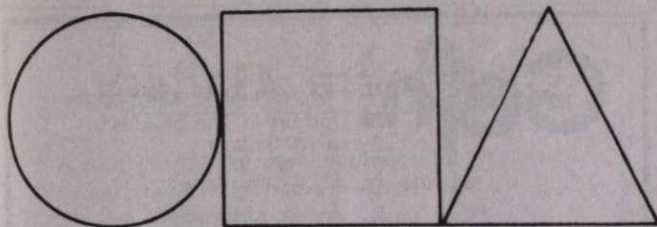
ARTISTS

CHOOSE FROM OUR VERY WIDE
RANGE OF COLOURS, BRUSHES,
BOARDS, PAPERS AND
ACCESSORIES.

Please ring for information or call at

213 Tuam St Phone 791-080

Smith & Smith



Art Awards

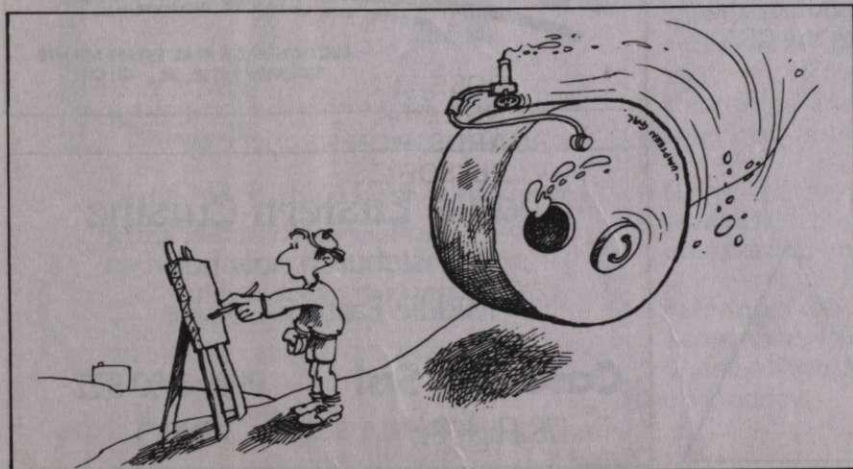
Royal Overseas League Commonwealth Art Exhibition

New Zealand awards to a total \$150.
London England awards to total £500 stg.

Receiving date for entry forms prior to September 10th, 1981. Receiving date for paintings September 10th, 1981. Entry forms obtained from Royal Overseas League, P.O. Box 318, Christchurch.

Dunedin City Council 1981 Painting Award \$750

Receiving date for entry forms and paintings September 19th, 1981. Entry forms obtained from The Secretary, Otago Art Society, P.O. Box 842, Dunedin.



Painting in North Canterbury
Sam Mahon

Selling Gallery

New Screen prints by Eileen Mayo and lithographs by Glenda Randerson.

Paintings by many working members.

Wall hangings in wool and fibres.

Large paintings most suitable for offices by Rick Maynard, Dragan Stojanovich, John Coley, Pauline Trengrove, Joanne Hardy and Edward Walton.

Selection for Working Membership 8 September, 1981

Please have your submission in the gallery on **Tuesday 8th September, before 3 p.m.**

That evening a meeting of applicants with some of the selection panel will be held at 8 p.m., for an informal discussion and criticism of the work. Would you please inform anyone you know who may be interested in becoming a working member of the Society?

4 paintings and 6 drawings
6 pieces pottery or craft
6 prints or photographs
Sculpture — 6 pieces or photographs of the work

Phone 63-088



Bells Arcade
Cashel Street



As your
TRUSTEE AND EXECUTOR
appoint

PYNE GOULD GUINNESS LTD
Your Local Firm



Consult **THE EXPERTS**,
for **ALL TRAVEL** overseas
& within New Zealand.

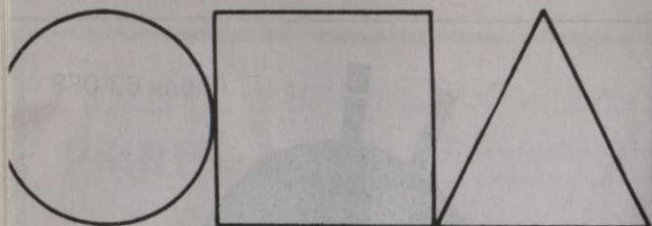
AGENTS FOR:

International Airlines, Shipping Lines,
Tour Operators, Hotels, etc.

open every Friday to 6 p.m.
cnr. Cashel & Liverpool Streets

ALGETY
TRAVEL

Phone 798-200



Adult Art Classes

We highly recommend these classes conducted by MICHAEL EBEL for painters at any stage of development. The 'Initial Class' students cover the elements that make up a good painting, particularly composition and colour, with exercises using drawing to illustrate points and develop ideas. Most people are so engrossed that they continue into the 'Follow Up' course.

These are specially structured classes, proving of great benefit to all who participate. For those wishing to continue, a third course is held for the 'veterans' with tuition given where needed.

Next year we shall organise the classes to come within the school terms.

Please ring the office for more information and dates for the next sessions. The courses are held in the studio workshop of the Gallery at 66 Gloucester Street, on Wednesday or Friday mornings 10-12 noon.

Classes are limited in numbers attending and the fee is \$32 for the course. Those who have taken part this year are most enthusiastic, we hope you will consider joining.

August Holiday Workshop

The four day workshop in the school holidays is a great opportunity for children to work on an art project in more depth.

September 1st, 2nd, 3rd, 4th at 10 a.m. - 12.30. Fees \$10 members. Non-members \$12.

These are happy classes where children learn skills and techniques in classes limited to 15 per tutor.

Childrens' Art Class

ENROLMENTS FOR TERM 3

There are many enrolments for next term and we advise parents to re-enrol their children early as we can accept only limited numbers.

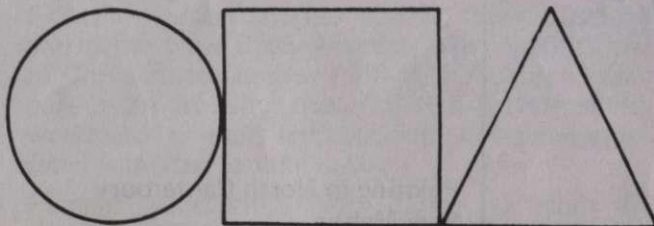
Our three tutors - Nan Crawley, Bernice Wilson and Emily O'Connor, give great encouragement to children to develop their appreciation of art.

Term - \$18 and \$21 non members.

Classes begin 19th September.

Charles Martin's Piano Lecture-Recitals

Charles Martin, Mus. B., M.R.S.T., L.Mus. T.C.L., Dip. Tchg., will be giving a series of lecture recitals in the CSA Gallery on Wednesdays between 12.15 p.m. and 1.15 p.m., commencing on September 16. They are arranged by the Wider Horizons Committee of the W.E.A. Each one will fall into four parts:- the development of the sonata from the seventeenth century to Beethoven: Schumann's pianoforte music: some contemporary music and some nineteenth favourites. For detailed information contact the W.E.A., 59 Gloucester Street, (opposite the CSA) telephones: 64-530, 60-696.



Gefn A co-operative of craftspeople
Upstairs in The Shades
for exclusive weaving
pottery
wood turning
fabric crafts
silver jewellery
sketches

NOW WE ARE ONE!

**Farmers
Haywrights**

Property Owners! When selling consult

Ford & Hadfield
LTD
MEMBERS REAL ESTATE INSTITUTE N.Z.

AUCTIONEERS & REAL ESTATE AGENTS
133 WORCESTER ST., CH. CH.

Middle Eastern Cuisine

Christchurch now has
Middle Eastern Cuisine

Casa del Sol

178 High St.

Phone 60-822

B.Y.O.

Jean Pritchard
N.Z.A.I.D.

For an exclusive and very different decor for your home or commercial interior, do call and browse amongst our imported fabrics, handprint wall-papers, lamps and accessories.

* * *

A complete interior decorating service from lighting to custom made lampshades is available.



DESIGN & DECOR
7 St. Albans St.
Merivale. Tel. 554-679



**ART SERVICES
LTD.**

PICTURE FRAMING
PHONE 68-429

241A MANCHESTER STREET

RING, WRITE OR CALL FOR
PROMPT, COURTEOUS ATTENTION
..... EXPERT CRAFTSMANSHIP AT
REASONABLE PRICES.....
WE WILL CLEAN, RESTORE AND
REFRAME OLD PICTURES



P.O. BOX 13356 ARMAGH

LAST NOTICE...

Collectors' Market

For the exhibition in September 1981, we are seeking outstanding work by recognised artists. There will be two categories —

pre 1940
post 1940

Artists may submit their own work.

Vendors need to establish their own prices and quote these as the selling price, from which the Society will deduct 22.5% for members and 25% for non-members.

THE PREVIEW WILL BE AT 8 pm ON 4th SEPTEMBER and, beside helping the finances of the Society **the exhibition will give an opportunity to sell work from your collection.**

It will enable buyers to upgrade work in their possession

To buy early work of a preferred artist and

To see paintings from private collections

Selection — a selection will be made from the entry forms and the vendors notified, a further selection of the work may be made by the artists' committee and the Gallery reserves the right to hang work submitted.

Names of past and present owners will not be publicised but purchasers could be given this information on request.

Paintings will need to be in the Gallery on 1st September, 1981. The exhibition will end on Sunday 20th September and should be collected on Monday.

Collectors' Market

Please cut off and return to the gallery:

P O Box 772
CHRISTCHURCH

IMMEDIATELY

This information to be confined to Senior Staff and Council of the Society.

PRE-SELECTION FORM

VENDOR'S NAME

ADDRESS

TELEPHONE Home Bus:

I am interested in exhibiting works in the 'Collectors' Exchange' and enclose the following details for each.

ARTIST born

TITLE OF WORK date

SIZE cm high cm wide

MEDIUM

COUNTRY OF ORIGIN

Other works by the same artist in public collections in:

Price

Signed

WINDSOR GALLERY LTD
(FORMERLY SMITH & HODGSON)

OUR NEW GALLERY IS THE MOST
SPACIOUS IN CHRISTCHURCH
QUALITY PICTURES ARTISTIC FRAMING

153 HIGH STREET
(OPP. HURST & DRAKE) PHONE: 60-724

Celbar
GALLERY

Shop 31,
Merival Mall,
CHRISTCHURCH

Telephone: 557-896

*Exhibitors of original works of art.
Also featuring graphics, etchings, prints
and art cards.*

Available for small intimate exhibitions.

B. J. Robertson, Director

THE PICTURE SHOP

in Campbell Grant : 196 Hereford Street, Christchurch

ARTISTS - have your pictures framed in our specialist shop (near Latimer Square) Large range of Mouldings 10% discount for C.S.A. Members.

ROWNEY

Top Quality
Artists Materials

*Oil Colours, Water Colours, Acrylic Colours,
Brushes, Palettes — Everything for the Artist*

MANUFACTURERS OF ARTISTS MATERIALS
SINCE 1789

COLT

CUT YOUR WATER
HEATING BILLS NOW

INSTALL

COLT SOLAR HEATING

\$500.00 Government Interest Free Loan

Available NOW

PHONE 798-230

or call 44 BRADDON STREET

THE PICTURE SHOP

in Campbell Grant : 196 Hereford Street, Christchurch

Cut down your framing costs. Make your own frames with Artists Picture Moulding in length. We will cut it precisely, ready for you to join. We also specialise in custom framing. Artists pictures.

CFM

The Canterbury
Frozen Meat Company Ltd
**FOR THE BEST
IN MEATS**

BUY FROM THE CFM MEAT MARKET

The Quality butchers for
*FIRST GRADE BEEF *VEAL *PORK
*MUTTON *LAMB *BACON *HAM

**SHOP AT THE CFM MEAT MARKET,
MAIN NORTH ROAD, BELFAST**

VALUE • QUALITY
SERVICE • SATISFACTION

Available at -

G.B.D. PRINTS LTD

207 Cashel St. (Opp: The Farmers)
Telephone 60-033

A comprehensive range of artists' materials:
Acrylic, oil & water colours, brushes, papers,
drawing blocks, easels, mounting boards and art
accessories.

**SUPPORT
YOUR BANK**

The bank that invests your money in your community



CANTERBURY SAVINGS BANK
Your support gets our support

Collection of Work

BUYERS. Rather than ask for payment and handle money at previews, the gallery staff prefer that work bought is paid for following the preview night or on the collection date.

Several times we have been embarrassed that work has not been collected until long after the close of the exhibition. This holds up the payment to the artist and causes problems in storage and care of the uncollected items.

Some galleries require a deposit which is forfeited if the work is not collected within a week.

We would prefer not to institute such a system.

May we request that buyers ascertain the collection date and collect work promptly at the close of the exhibition.



**The CSA
Invited Painters Exhibition -
Non Figurative
Until 30 August**

Work by three Australian artists resident in New Zealand and 18 others including, McLeod, Harris, Bambury, Hotere, Peebles, Trusttun, MacFarlane, Thomas, Laughlin, Walters, Banbury, Walton, Coley, Trengrove, Waldon, Chaytor and an installation piece by Evan Webb.

We invite members to A GATHERING OF ARTISTS at the CSA Gallery between 5-6.30pm on 26th August 1981, wine will be served.

**Irene Richards O'Neill
Until August 30**

Born Tauranga 1939, Nee O'Neill
Canterbury School of Fine Arts, 1959-62
Graduated, Dip Fine Arts, Hons in Painting 1963
Art teacher, Tauranga Girls' College, 1964-69
Lived at Wewak, Sepik District, Papua New Guinea for nine months 1970
Travelled in South East Asia, Japan, Australia at the end 1970
Lived in Greymouth and Hokitika
Lived in Western Samoa, July-September 1980
Exhibited in one person and major group exhibitions
Paintings in many public collections in New Zealand

**Steven Greenwood
Until August 30**

Dip Fine Arts, Hons Photo mechanical drawings, black and white photographs incorporating a curious temporal element aiming to reveal or suggest mysterious and interesting aspects of the world. On view in the Print Room.

**Auckland Potters
Preview 28 August, 8pm**

Seven of the finest Auckland potters will be showing their recent work in the ground floor galleries, from 29th August - 13th September.

All are featured in the book 'Craft New Zealand' and all have a distinctive personal style of working.

LEN CASTLE - scarcely needs introduction, his work has graced every major New Zealand pottery exhibition and must be in every collection.

IAN FIRTH - became fascinated with pot making at art school some 34 years ago, and the beat goes on . . . Some of the results have been purchased by private and public institutions, many by individuals, a reasonable number have gone abroad, finally a substantial amount has become excellent 'hardfill.'

MARGARET MILNE - born 1917. Worked under Pat Perrin. Influenced by John Chappel, Takeichi Kawai. Travelled to Japan, full time potter. New Zealand and overseas private collections.

JOHN PARKER - exhibited widely throughout New Zealand and most well known for his extension of the marbled technique of coloured porcelain clays.

RICK RUDD - born and educated United Kingdom. Diploma of Art and Design.

Awards: Fletcher Brownbuilt Pottery Award winner 1978, and Merit Award, 1980. Winstones Bowl Award, 1981.

Exhibited widely in North Island group and invited shows and one man shows in Auckland.

Work in public collections Auckland, Waikato, Lower Hutt and Manawatu.

PETER STICHBURY - born Auckland 1924. Studied at The Leach Potter, St. Ives, England, 1957/8 and with Michael Cardew, Abuja Northern Nigeria, 1958-59. All major exhibitions New Zealand since 1951: One man exhibitions, Wellington 1959 and 1962. Havelock North 1970. The Craftsman, Palmerston North, July 1973. Represented in the Faenza collection; New Zealand House, London, Canterbury and Auckland Museum and other institutions. Potting full time since December 1969.

GRAEME STORM - born Auckland 1936. Interest in pottery began while attending Auckland Teachers' College. Worked as a full time potter since 1963. Represented in the International Museum of Ceramics at Faenza, Italy, Art Galleries and Museums in New Zealand and Japan. Commissioned to make a ceramic mural in the Communications Satellite Earth Station near Warkworth.



PARK YOUR CAR

AND FORGET IT - AT

AMURI MOTORS CAR PARK

UNDER COVER • PEDESTRIAN LIFT • 10c HOUR
Corner DURHAM & ARMAGH STREETS

MERIVALE VILLAGE FLORIST

189 Papanui Road
West Entrance
Supermarket
Building

Ruth Bain
Diploma N.Z.P.F.

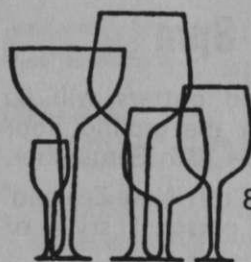
Telephones 559-738
After Hours
557-253 or 528-577

DUNBEATH FINE ARTS

188 ST ASAPH STREET (CNR COLOMBO ST)
SYLVIA STACEY PHONE 64310

ART RESTORATION

FINE ART MOUNTING AND FRAMING.
OILS · WATERCOLOURS · ENGRAVING.
ETCHINGS · DRAWINGS, ETC.



MALING & CO

WINE MERCHANTS

86 GLOUCESTER STREET

795-470

Tasman Gallery

72 GLOUCESTER ST

ONLY TWO DOORS FROM CSA GALLERY

- ☆ individual, unique framing
- ☆ expert restoration
- ☆ tremendous selection of framed and unframed prints, finished edition prints and original paintings.

Come in and look around next time you're passing by the CSA Gallery.

COLIN RITCHIE - DIRECTOR
Tasman Gallery

SEVERAL ARTS

807 COLOMBO STREET, CHRISTCHURCH
TELEPHONE 69-264

GALLERY FOR EXHIBITIONS

WEAVING AND SPINNING SUPPLIES
HOME OF FINEST POTTERY
SHIRLEY and GRAHAM INWOOD

BALLINS INDUSTRIES

WINE & SPIRIT MERCHANTS

PHONE 69-736

39 CARLYLE STREET

Stephen Ian Gibbs - Drawings and Paintings

Preview 2 September, 8pm

Of Maori and English descent. Born in Gisborne, 1955.

Spent four years, Ilam Art School, graduating 1978 with Diploma of Fine Arts. Currently art teacher Kaiapoi High School.

My current set of images deals with capturing the motion and energy created by Human Forms in situations that we view on our sportsfields, as well as looking at the roll of sport and the athlete in relationship to our evolving society.

As my work deals with aspects of motion my views have been influenced by the words and images of LEN LYE who once said:-

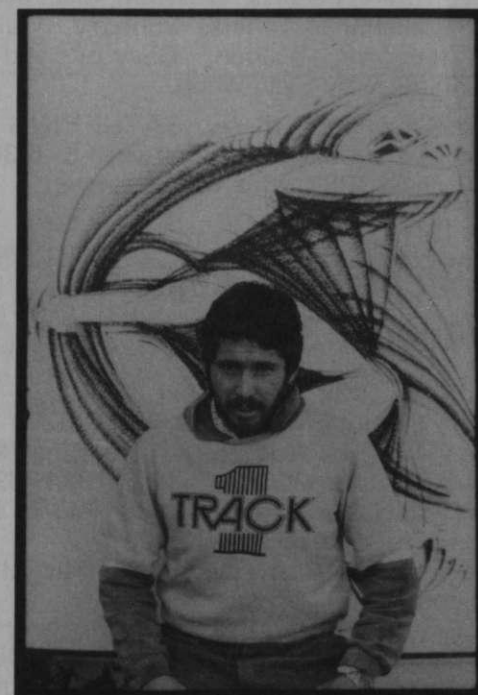


Photo by Stuart Griffiths, 1981
Stephen Gibbs

"The sense of motion is anchored to our unconscious sense of bodily weight. And only static art can hold the emotional mark of its creator in one instantaneously perceived image, one that may involve an immediate aesthetic response. On the other hand of all art forms, the imagery of motion best describes itself."

And Paul Klee: who saw motion as the basis of all creation, dissolving the distinction between time and space

My pre-occupation with sport is a reflection in part of self and surroundings. My wife being a New Zealand netball player and myself being actively involved in a number of sports.

When watching international sport today one becomes aware of the enormous amount of energy which is generated by spectators and in turn focused on the athletes. In a sense sport becomes the mirror of the society in which it exists, and serves as a valuable release valve in our high stress urban environment.

The current series includes a sequence using the cricket player. Cricket being transformed from sunny afternoons, cucumber sandwiches, cups of tea - to modern day Gladiator or Storm Trooper.

Using oils on canvas and hardboard, and inks on paper, "I capture an instant of time and expand it."

Collectors' Market Preview 4 September, 8pm

Buyers will be eager to see the paintings that are coming into the Collectors' Market exhibition, which opens on 4th September at 8 p.m. We are hoping for some outstanding work by recognised artists. No painting will be sold prior to 8 p.m., unless to a public collection.

You are invited to come to the preview to see work which is not generally available for viewing and, who knows, you may find something which will really delight you and give much pleasure in years to come.



Knitted Wall Hangings from America

We are pleased to advise that we will be showing the exhibition of creative knitting recently shown by the guest exhibitor at the Dunedin Woolcrafts Festival.

MARY WALKER PHILLIPS is one of the most inventive knitters, she uses many types of material, linen, wool, silk and jute to knitted copper wire.

Her work has been bought by the Major American Museums and she has exhibited and taught widely throughout the world. She is the President of the World Crafts Council USA (1981). Publications:

Step by Step Knitting - Golden Press, N.Y. 1967
Step by Step Macrame - Golden Press, N.Y. 1967
Creative Knitting - A new art form, Van Norstrand, Reinhold

N.Y., published 1980
- Franklin Watts 1977

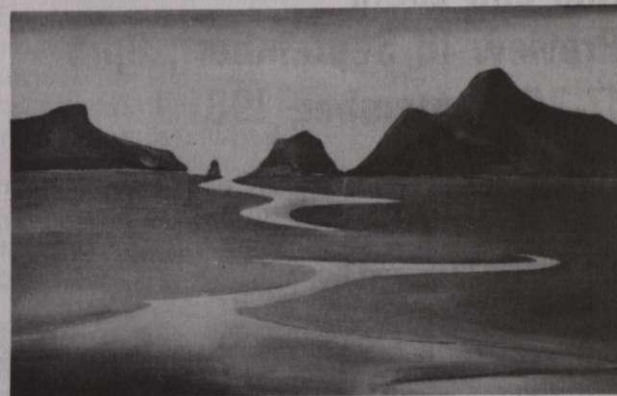
Knitting

Pieces in the exhibition were executed between 1964 and 1981 and range in price from \$200 - \$1200. Mary Walker Phillips believes that knitting is no longer merely a way to produce body covering, it goes beyond that and is a valid medium for creating works of art.

We expect the work to be of great interest and hope that you will take the opportunity of seeing it at the CSA Gallery between 15th and 30th September, 1981.

Rona Ellis Preview 16 September, 8pm

Rona Ellis, who was a pupil of Louise Henderson for some time continues her theme 'From the harbour to the lonely coast'. Her 'harbour' paintings depict the old houses that cluster near the seaports, and her 'coasts' endeavour to show the remoteness of our vast coastline.



Rona Ellis

Ellinore Ginn Preview 16 September, 8pm

Ellinore Ginn from Wellington is to exhibit her paintings in Christchurch again in September. Following a recent sell-out exhibition in Wellington Mrs Ginn has been invited to exhibit in Honolulu.

She was born in Canada and studied in London at the Slade and Heatherley Schools of Art before coming to New Zealand 28 years ago.

The enchantment and magic combined with colour and whimsy create a world of light hearted fantasy in her work, and is reflected in such titles as "Fly with me sweet angel", "Raggedy dolls" and "Blue Illusion".

You are invited to the preview at 8 p.m. on September 16th, to meet the artist.



exhibitions

Kiln and Loom

Preview 16 September, 8pm
17-30 September, 1981

Three potters, Auna Apse, Esma Lyon, Joan Moon and five weavers, Beryl Bircher, Jill Dando, Veronica Larsen, Bev Macauley and Pauline Pease combine in 'Kiln and Loom.'

We all have great satisfaction in working with clay and fibres and hopefully our work will tell its own story.

We invite members and friends to the opening at 8 p.m. on 16th September.

C.G.H.S. Old Girls'

Art & Craft Exhibition

26-29 September

Preview 25 September, 6-8pm

The Christchurch Girls' High School Old Girls' Association will hold, at the Gallery, an exhibition which will feature works by Old Girls', Staff and present pupils of the school.

The exhibits will be carefully selected to cover a wide variety of interests in the hope that the display will appeal to many people, not necessarily connected with the school.

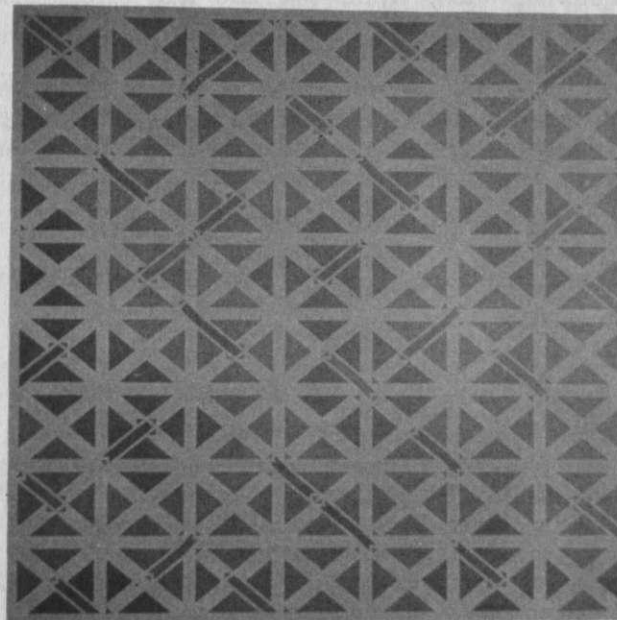
While most of the items will be for exhibition only, there will be some for sale.

John Hurrell

Paintings 3-17 October, 1981

Preview 2 October, 8pm

The exhibition will consist of 21 paintings selected from work done over the past two years. About two thirds will be paintings using maps as 'given' material, and which experiment will compositional devices utilizing the mental correlation between the index and the 'content'. By using the intrinsic properties of the map in conjunction with mono coloured paint and varnish, I wish to create works which embody simple ideas, are self explanatory, and which have an inter-relationship between the formal and the fortuitous.



Painting: Dice Scores as Content 49" x 50"
 October 1979
 John Hurrell

Teresa Maguire

Preview 2 October, 8pm

I suppose my work at the moment falls into the genre of still life. The subjects I choose are windows, furniture and clothing which seem beautiful to me, or which are a very familiar part of my surroundings. I always consider them for a long time before beginning them, and attempt to trap in the painting the particular 'mood' of the subject.

Nicola Everett

Preview 2 October, 8pm

My work at the moment consists mainly of drawings. The works would probably be described as still life — however I am not interested in creating illusions even although, the object I use are 'realistic'. They are only vehicles of my main objective. Both the composition and patterns are very important elements of my work. The 'objects' are usually things around me. I rarely go looking for them, unless there is some composition consideration.

Michael Oaten, Nelson

Paintings 3-18 October

Preview 2 October, 8pm

Born Bristol 1921, Dip Fine Arts, Dip (Tasmania)
 Exhibited England, France, Australia, Channel Islands and New Zealand.

Robert Thompson
Preview 2 October, 8pm

Robert Thompson			
begin	drawing	1	2
move	Structure	3	6
end	drawing	6	12
	Structure	10	20
	drawing	15	30
	place	21	42
	of times	21	42

1.10.81 — 15.10.81

Robert Thompson

John Hawkhead
'Figments'

Born in Christchurch in 1947, currently preparing an exhibition of photographs towards completion of a Diploma of Fine Arts with Honours at Canterbury University.

'I am working on a series of images which derive from two opposing traditions active in the history of photography, "subjective" work derived from the snapshot, and "objective" work derived from the documentary.'

'I have learnt that the photographer's will alone is not strong enough to control every aspect of the images he makes, and I now enjoy the transformation which occurs—slightly beyond my control—when an event is transformed into an image.'

'The withdrawal to the darkroom has taught the photographer to contemplate his images carefully and to slowly accept what they reveal as his own, even when he may have stumbled on aspects of them by accident. On "the other side" of his image is a moment and a space once pulsing with life now stilled into permanent immobility. The photograph stops time and transports place, whatever else it does. This creates for the photographer a double responsibility, one to the reality in which he worked at the time of exposure, and one to the illusion of that reality which he has captured. He treads a tightrope between the responsibility he feels towards those on whom he turns his lens, and the obligations of his art, which compel him to enhance and emphasize the personal thing he noted and which he passes on through his photographs I call my images 'Figments' in order to question their status as truth.'

3rd — 15th November

Ria Bancroft
21 October-31 October
Preview 20 October, 8pm

"and from this a sculptured Trinity crafted with insight a new thesis extrapolate: Energy shed for the world by one Death documented, redeeming, can transform manhope to healing New Kingdom will come."

Stella Empson

Pat Unger
Preview 3 November, 8pm

land marks



paintings by
 3-16nov '81 pat unger

**Esther Archdall -
Tapestry Weaving
Preview November 3, 8pm
Exhibition closes November 15**

A collection of small tapestries designed and woven by Esther Archdall will be on view from November 3rd.

Woven tapestry should not be confused with embroidered tapestry. In embroidered tapestry the design is worked with a needle onto canvas, whereas in woven tapestry the design is woven to create the fabric using a loom or a frame.

As tapestry weaving is a slow process this designer-weaver has chosen to create small tapestries for the sake of more frequent opportunities to work out ideas in design and techniques and to explore colour. Design and colour are her main interests in tapestry weaving with techniques the tool.

The theme 'The Garden' has been the starting point for the ideas which have been expressed through abstract or figurative or geometrical shapes. Vibrancy and subtlety of colours have been achieved by putting together several colours of fine yarns to make the weft thread, or by combining different fibres such as cotton, wool, linen and acrylic.

As the number of people engaging in tapestry weaving in New Zealand is increasing and the number of tapestry exhibitions brought here from abroad is growing, an understanding and appreciation of tapestry will develop as it has in many countries.

New Members

Mr M. Angelo
Mr S.H. Barlow
Miss S. Bell and Mrs E. Okey
Mrs E. Brand
Breens Intermediate School
Mr and Mrs J. Bremner
Mr and Mrs Bultitude
Mr R.J. Cameron
Mrs H. Campbell
Mrs R. Conway
Mrs M. Cummings
Mr and Mrs G.R.G. Forbes
Miss J.E. Frazer
Mrs B. Grasse
Miss B. and Mrs E. Hanafin
Mr and Mrs Harris
Mr and Mrs B. Hitchon
Mr and Mrs M.G.R. Hutcheson
Mr O.R. Krijgsman
Mr and Mrs Leversedge
Mr M.F. Lewandowski
Mr J. Lyon
Mrs C.M. Lyons
Mr J.F. MacDonald
Dr and Mrs G. MacDonald
Mrs C. Martin
Mrs Meatchem
Mr and Mrs H.M. Mechen

Mr B. Mules
Mrs C.A. Mulligan
Mrs A.B. Ott
Mr D. Partridge
Mr and Mrs A.D. Perkins
Mr and Mrs J. Perry
Miss J. Podstolski
Mr and Mrs R.E. Porter
Mrs L. Price
Mr K. Raven
Miss N.J. Romeril
Ms U.J. Rose
Mr and Mrs S.L. Savill
Mr C.L.L. Smith
Mr P.J. Spicer
Mrs J.D. Stott
Mr and Mrs E.B.E. Taylor
Ms L. Taylor
Miss Y. Van de Stolpe
Miss L. Ward
Mr M.R. Westerra
Mrs B. Whittle
Mrs N.R. Williams
Miss B.M.L. Wilson
Mrs P. Winkler
Miss M.L.W. Wynter-Smith
Mrs S.L. Young

Corporate Membership

We are pleased to welcome the firm of Shirwin Advertising Ltd, Riccarton Road, as a Corporate member.

Arts Calendar

	AUG/SEPT/OCT/NOV '81
CSA Invited Painters	13 Aug - 30 August
Irene Richards	13 Aug - 30 August
Evan Webb	13 Aug - 30 August
Steven Greenwood	13 Aug - 30 August
Peter Bannan and John Lyon	18 Aug - 26 August
Halswell Potters	20 Aug - 26 August
Auckland Potters	29 Aug - 12 August
Stephen Gibbs	3 Sept - 12 September
Collectors' Market	5 Sept - 16 September
Japanese Photography	4 Sept - 16 September
Mary Walker Phillips	16 Sept - 30 September
Rona Ellis	16 Sept - 30 September
Elinore Ginn	17 Sept - 30 September
From Kiln and Loom	17 Sept - 29 September
National Party Exhibition	19 Sept - 20 September
Edward Walton	22 Sept - 30 September
Christchurch Girls' High School	26 Sept - 30 September
Rosemary Campbell	3 Oct - 17 October
John Hurrell	3 Oct - 17 October
Nicola Everett	3 Oct - 17 October
Teresa Maguire	3 Oct - 17 October
Michael Oaten	3 Oct - 17 October
Robert Thompson	3 Oct - 16 October
Jens Hansen Group	3 Oct - 16 October
Ria Bancroft	21 Oct - 31 October
Pauline Rhodes	21 Oct - 31 October
Paul Cook	21 Oct - 31 October
John Deans	21 Oct - 31 October
Morgan Jones	21 Oct - 31 October
Stewart Griffiths	21 Oct - 31 October
John Hawkhead	2 Nov - 15 November
Richard Uti	2 Nov - 15 November
Pat Unger	2 Nov - 14 November
Leonard Lambert	4 Nov - 14 November
Esther Archdall	4 Nov - 14 November

My Room Upstairs
EMinor Ginn