



Bulletin

The Robert McDougall Art Gallery

A bi-monthly publication containing news, views and reviews of activities at the Robert McDougall Art Gallery.

Number 9

May/June 1980

Annual Subscriptions

Members are reminded that subscriptions are now due. Your continued patronage will be greatly appreciated and a membership form with which you can renew is enclosed. We would also urge you to provide us with the names and addresses of prospective members to whom we can send a gratis copy of this *Bulletin*.

Gallery Bicycle

The gallery was very fortunate in receiving the gift of a bicycle from A.G. Healing & Co. recently. It is splendid to see the resurgence of the bicycle as a popular mode of transport. The topography of Christchurch is ideally suited to it and ours is already proving immensely useful as an alternative to the van for small messages in the city.

Exhibitions and Works From the Collection

May 3 — June 17 'Landskip' From Own Locale

Paintings by W.A. Sutton, Brent Wong, Toss Woollaston, E.N. Bracey, Rita Angus, Colin McCahon, and Doris Lusk, give us seven different views of New Zealand landscape.

May 3 — June 3 Ronald Kowalke 'Dante's Inferno'

Continuing our policy of exhibiting works on paper in the Print Room large etchings by Ronald Kowalke depicting the hell of 'Dante's Inferno' will bring to Gallery visitors the work of a highly respected, international, contemporary print maker. These works have been placed on permanent loan to the Gallery by the Queen Elizabeth II Arts Council of New Zealand.

May 3 — June 6 Olivia Spencer-Bower

Who better than our most distinguished contemporary watercolourist to initiate our programme of showing a body of work by one artist selected from our permanent collection.

May 3 — June 17 Non Figurative

To contrast with the more traditional style of painting in the Gallery, this exhibition of contemporary New Zealand painting and sculpture confronts us with challenging and often difficult questions of how diversely we can see the world around us and how several artists present it anew.

May 3 — June 2 All at Sea

A collection of paintings depicting the open sea boats in harbour, breakers pounding the coast line and small craft battling against mountainous seas.



Edith and Osbert Sitwell, Renishaw Hall Yorkshire, 1945 Bill Brandt

May 3 — June 17 Neil Dawson 'Seascape' John Panting 'Untitled V'

Neil Dawson's 'Seascape' installation which was purchased last year after a very successful show in the Gallery, will be reinstalled with his working drawings alongside 'Untitled V' by expatriate New Zealand sculptor, the late John Panting.



The Bard Began Cato IV, Ron Kowalke, etching & aquatint

May 3 — June 8 Early New Zealand Painted

Aspect of daily life and the rapid opening up of New Zealand since its colonial days can be traced in paintings by trained and untrained painters. In fact it is astounding just how many paintings were produced of every corner of the country. To compliment this exhibition a film 'Travel Log' on loan from the National Film Unit traces developments in New Zealand through painting.

*Film Screening: Weekdays 11am and 2pm
Weekends 2pm and 3pm*

May 3 — Petrus van der Velden

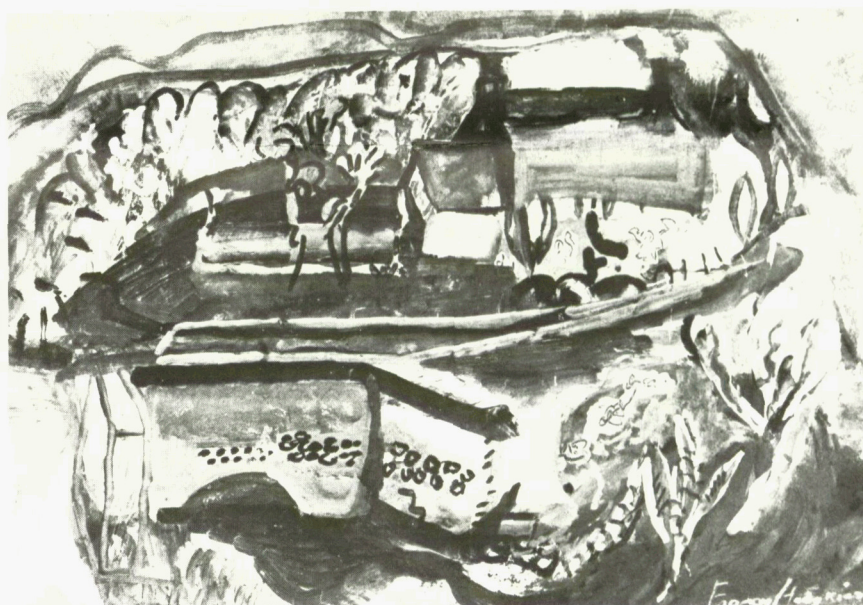
Featuring the paintings and drawings of New Zealand's most influential European trained painter, with an audio visual programme and didactic material. The exhibition will change throughout the year to show the development in the artist's work commencing with his work in Holland 'Prior to 1890' through his years in 'Christchurch 1890-1898' to 'van der Velden's influences.'

May 3 — June 8 Countenances from the Past

Not widely practised today, portrait painting has a long and important history. This exhibition taken from the Gallery's collection offers a chance to reflect on the fine tradition of portrait painting, to muse upon worlds gone by, changing costumes, painters and subjects of fame, and wonder how penetrating personalities can be captured with mere paint and brush on canvas.

May 3 — Expatriate Painters

With the recent acquisition and generous gifts of paintings by our most internationally acclaimed painter Frances Hodgkins and the elegant paintings of Raymond McIntyre and Owen Merton, this exhibition draws together the work of three important New Zealand expatriate painters. The room will also feature a 17th century 'Coromandel' screen on loan to the Gallery, South East Asian ceramics and traditional Japanese wood block prints.



"To the Castle, Corfe", Frances Hodgkins, gouache

June 21 — July 27 Margaret Stoddart

We recognise our good fortune to have a sizable collection of works by Margaret Stoddart who actively painted in New Zealand from the late 1880's to 1934 with a short spell in Europe. A robust watercolourist she painted subjects close to her pioneer origins — the stark untamed hinterland of the South Island and shingly river beds typical of Canterbury regions.



"Old House Diamond Harbour" Margaret Stoddart, watercolour



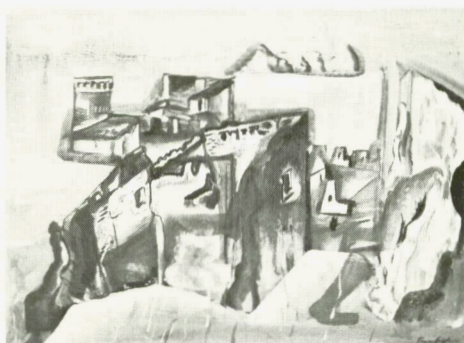
Educational Programme

The Robert McDougall Art Gallery

Number 12

May 1980

Three exhibitions opening in the Gallery this month provide ideal material for the study of the historical development of New Zealand painting. Viewed individually or in sequence they provide an excellent work project.



Early New Zealand Watercolours May 3 - June 8

Featuring principally landscapes this exhibition includes the works of J. C. Hoyte, J. Gully, Von Tempsky, M. Sherwood, M. Stoddart and A. Walsh. It illustrates major development and stylistic trends in watercolour technique and reflects the influences operating in New Zealand art up to the early 19th century.

Supporting Film May 3 - June 8

Accompanying this exhibition is the National Film Unit's 'Travel Log'. This film presents a survey of early exploration and settlement in New Zealand from the first surveyors through to the establishment of the initial settlements. It bases its presentation on the art works, artifacts, and early photographs which survive those early times and which so well reflect the scene. The film will be screened daily on request and with scheduled showings 11am and 2pm weekdays, 2pm and 3pm weekends. Classes requesting showings at other times are asked to arrange a screening with the Gallery.

Petrus van der Velden May 3 - June 30

The establishment of what is to become a regular Van der Velden room in the McDougall begins with a selection of oils, watercolours, and sketches originating during the Dutch period in Van der Velden's career prior to his arrival in Christchurch in 1890. In this first exhibition we concentrate on his early Marken works and the paintings strongly influenced by The Hague School of Dutch painting.

New Zealand Expatriates May 3 - July 31

Young New Zealand artists in late 19th century New Zealand received their early inspiration and training from artists like Van der Velden, and Nerli, who brought their considerable skills and training to the young colony. Raymond McIntyre and Owen Merton both studied with Van der Velden, and Frances Hodgkins with Nerli. Then they departed to work and study in Europe and in some cases to establish European reputations. In this exhibition we present a selection of works produced by these expatriate artists in Europe.

May Holiday Programme in the Gallery May 10 - 25

A quiz game entitled 'Where do you see it?' will run throughout the May holidays and performances by the theatrical troupes employed in the Gallery's OutReach Programme will be presented in the Gallery weekdays at 10am and 3pm.

The Robert McDougall Art Gallery
P.O. Box 237 Christchurch,
Botanic Gardens, Rolleston Avenue,
Christchurch 1.
791-660 Extension 695

**June 6 — Aug. 3 Piranesi —
Perspectives on Rome**

An unusual combination of talents made Giovanni Battista Piranesi one of the most remarkable artists of the 18th century. He made a signal contribution to art, architecture, archaeology and civil engineering by producing over one thousand large etchings depicting the vestiges of Roman art and architecture that were still existing in his day. This exhibition of etchings is presented in three sections:

*Architectural and Perspective
Imaginary Architecture
Roman Vedute*



Tomb Of L. Arrunzio From Cameri Sepolcri, Giovanni Battista Piranesi, etching.

**June 21 — July 27 From Foreign
Shores**

Throughout our short history many artists from overseas have worked in New Zealand, some for a short while, others for a big percentage of their lives. This exhibition taken from our permanent collection covers a wide span of time, techniques and subjects providing an interesting insight into how our land and people were seen by eyes trained elsewhere.

**June 26 — July 27 'Cubism —
John Weeks - Cubist Related Works'**

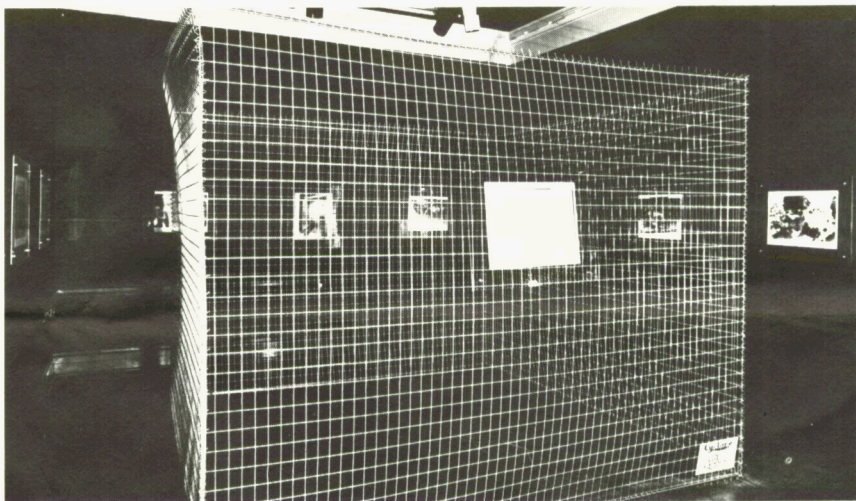
A must for all secondary school students studying art history, this exhibition brings together works by New Zealand painters and sculptors who reacted to the influential 'cubist' movements which started in France in the early years of this century. There will be an informative Audio Visual programme and didactic display.

Exhibition News Flashes

Since the last bulletin the icon exhibition, now entitled *Ikon: inspired art* (orthodox church treasures from the Wijenburg collection), has, with the addition of some major extra items including a 15th century Russian, *Dionysius, Mother of God*, escalated to \$9,000,000 in value. This will show from September 13 to November 16.

By now you will also be aware that the immensely important Thyssen-Bornemisza collection of 108 Impressionist, Post Impressionist and Twentieth Century paintings — indemnified by Government for \$24,000,000 — will be on exhibition at the McDougall from 27 November until Christmas Eve, 1980, obviously, will be a vintage year for the visual arts in Christchurch.

Confirmation has also just been received from the Victoria and Albert Museum, London, that a survey exhibition of English silver similar to that sent to Russia three years ago, which was requested by the director during his European trip last year, will be available to Christchurch for June and July of next year.



"The Law" photographic installation by Margaret Dawson

Saturday June 7 Free Flight Workshop

A workshop will be held in the Gallery at 9.30am to give instructions in the construction of hot air balloons, kites, and other objects capable of flight. This workshop is of interest to all age groups; parents and teachers will find it especially useful.

A small charge will be made for materials.

Sunday June 22

All those who have made hot air balloons, kites, or any object capable of flight are invited to attend a public participation morning in North Hagley Park beside Lake Victoria at 9.30am.

A prize will be given for

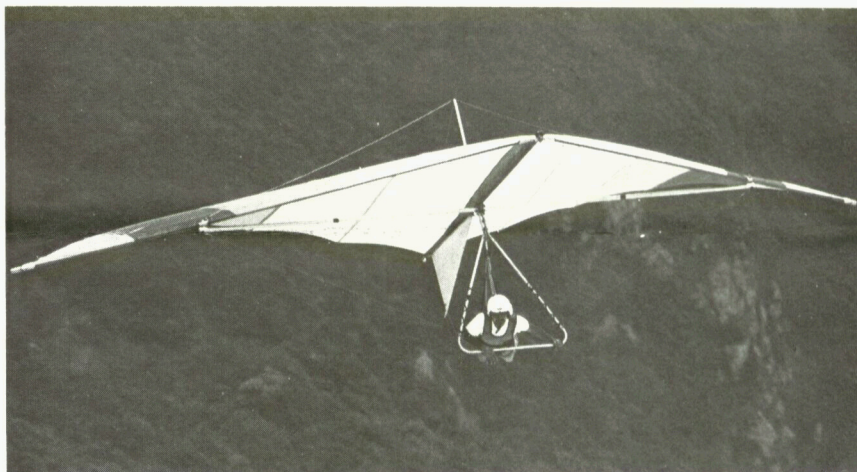
- (i) hot air balloons achieving the longest flight
- (ii) best decorated balloon.

June 19 — July 7 Free Flight

Paying a modest tribute to the relationship of 'function and form' the Gallery Centre Court will blaze with colour and a distinct 'aerial air' with a brilliant hang glider suspended from the ceiling and massive kites with menacing stylised Japanese faces and blazing tails. Films on kite flying, hang gliding and hot air ballooning will be shown in the Gallery at advertised times.



A recreation of an elaborate late 18th century hot air balloon, decorated in the manner of the late 18th century



"Hang Gliding — a close affinity with the birds"

OutReach Programme

The OutReach programme continues to extend its scope and its range, taking visual and performance art into community areas frequently isolated from this type of activity.

Much of the programmes recent extension is due to a grant from the Southern Regional Arts Council and the acquisition of more staff. Keith Downer, previously the Manager of The Music Shop at the Christchurch Arts Centre is now employed by the Gallery administering the bookings, venues and publicity for the Out Reach project and a new troupe entitled *Theatrical Explosions* joins the *Threepenny Folly* in the performance area of our project.

Activities and venues are diverse but recent highlights include a particularly successful season with young children. 'The Popplesnitch' and 'Puddletap the Magic Frog' have shown the fantasy and excitement central to the arts and important in the emotional development of the young. *Threepenny Folly*, who also specialise in fine instrumental and part-singing work, opened on April 11 a series of special Friday lunch hour concerts for city workers and shoppers at the Provincial Chambers. Subsequent concerts will be held on **May 2 and 16, 12 noon to 1.30pm.**

Threepenny Folly have also been touring when recently the OutReach project was invited by the Queen Mary Hospital to Hanmer Springs, the travelling expenses being met by the Hanmer Springs authorities. While they were in North Canterbury they extended their tour to include performances at Waipara and several North Canterbury communities. This type of extension into the wider Canterbury community is enthusiastically supported by the Southern Regional Arts Council and the possibility of using the New Zealand Railways Arts Council Touring Arts Scheme for this purpose is being considered in future tours for the OutReach programme later this year.

The mingling of performance, literary and visual arts in the OutReach programme 'The Collections of a Magpie' by *Jill Wilcox* and Gallery staff has involved an increasing element of community participation as special contributions are being made by the public to Jill's 'collection.' Public participation in the special events held in conjunction with the *Street Exhibition*, the *Celidh* or public dancing day on April 13

and the *Pavement Art Competition* on April 20 was also most successful.

The In-Gallery concerts on the first Sunday in each month continue with the recent introduction of a donation box to help establish a piano fund. The scope of our concerts is limited by our lack of a piano, so the concert donations are seen as a means by which we can hire or eventually purchase a suitable piano for this purpose. The **May 4** concert will feature *David Vine* at the Clavichord and on **June 8** *Mark Hodgkinson's* brass quartet will continue our varied musical programme.

Three of the Public Hospital mural projects have now been completed and are being installed. They are Grant Banbury's two large canvas panels for the Orthopaedic Department, Eddie Walton's twelve large panels for outside the Occupational Therapy Department and Michele Beaufoy's painted canvas vanes in the main corridor. The final piece — a large canvas for a turning in the staircase by the Dietary Department — by Ian Laughlin is proceeding well.

As the OutReach programme continues to widen its scope, assemble new programmes and engage new talents, its activities tend to embrace new and further areas within the community and requests for information or for the services of the project are welcome at the Gallery at any time.

South Canterbury field trip

It was with regret that the scheduled trip for Friends to South Canterbury was cancelled. In spite of the unique opportunity to inspect the Maori cave paintings otherwise inaccessible, demands was insufficient to allow us to continue.



Malcolm McNeil . . . and a portion of his audience. A very successful Street opening enjoyed by some 400 guests.

**May School Holiday Programme
May 10 — 25**

Following a successful school holiday programme in the Gallery last year we are again offering daily activities for the children. *Threepenny Folly* will be presenting a mixed musical and theatrical programme each morning, Monday to Friday in the South Gallery at 10am and the *Theatrical Explosions* company will perform each afternoon at 3pm. As with all the OutReach projects, the performances are given free of charge although a donation towards the Gallery's expenses is much appreciated.

Continuing also throughout the holiday period is a visual quiz competition entitled "Where do you see it?" Entry forms will be obtainable at the Gallery with the correct entries entered into a draw to select a junior and senior prize winner. The prize winners will be announced on June 13th. Last year this type of competition proved very popular and we are certain the programme for May 1980 will be equally as stimulating and entertaining.

Acquisitions March-April 1980

Gifts to the Gallery

The following works have been gifted to the Gallery.

From Mr and Mrs Alan Brassington, Christchurch. Claudius Brassington — *Portrait of Alan Brassington aged 5 years*, marble.

Claudius Brassington — *Portrait of Alan Brassington aged 5 years*.

Plaster preparatory mask for sculpture.

Claudius Brassington — *Portrait of Mr Gadd* (student work). Terracotta relief. — *Portrait of an Old Identity*.

Terracotta relief.

Claudius Brassington - *A Fragment in Marble*, Portrait of Miss Brassington the sculptor's daughter, marble. This work was exhibited in the Canterbury Society of Arts Annual Exhibition March 1913. Catalogue No. 315.

Colin McCahon — *The Virgin and St Anne* 1948, pencil on brown paper.

We would also like to thank Mr Brassington for the additional items of archival material he has deposited with us.

William Brassington — *Get Thee Behind Me Satan* c. 1865, stone. This work was created as a demonstration piece for masons working on the Provincial Council Chambers in 1865 and was intended to be included as one of the central blocks but was eventually abandoned.

From the Canterbury Public Library M.T. Woollaston — *Two artists sketch books*, pencil and ink.

The following works have been recently purchased
Frances Hodgkins *To the Castle, Corfe*, gouache.

Eric Gill *Teresa and Winifred Maxwell* 1923, wood engraving (trial proof).

J.A. McNeill Whistler *St James Street, London*, etching (4th state).

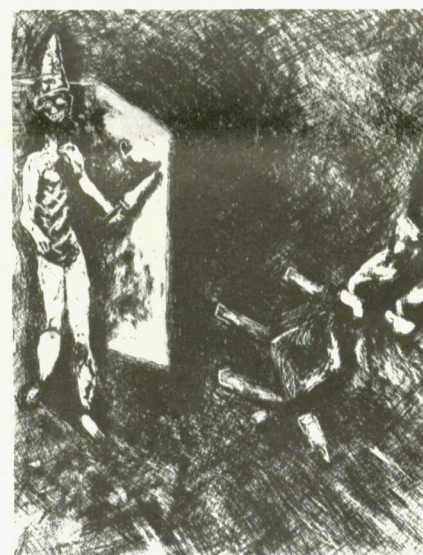
William Holman Hunt *The Desolation of Egypt* (The Sphinx 1857).

Published for the Art Union of London by the Etching Club.

Marc Chagall *La Mort at le Bucheron*, etching 60/100.

Le Chene et le Roseau, etching 60/100.

Two etchings from the *Fables of La Fontaine* 1927. From an edition of 100 large format etchings printed with an edition of 200 text Volumes published in 1952.



La Mort et le Bucheron Marc Chagall etching



"The Virgin and St Anne" 1948, Colin McCahon, pencil