



A bi-monthly publication containing news, views and reviews of activities at the Robert McDougall Art Gallery.

Number 8.

March/April 1980

Subscriptions

May we remind you that Society of Friends subscriptions for 1980/81 are due. In spite of substantial cost increases in printing, postage and other services, we will retain the same subscription rates as for last year. Patronage of the Society of Friends is a way in which you can express your support of the visual arts in Christchurch in general and the City Council's programme and institution in particular. Please use the enclosed subscription form to renew your membership and to recommend other potential members at the same time.



Forthcoming Exhibitions

Icons September 16–November 11

Negotiations begun in the Netherlands last year with the Foundation 'Castle "de Wijenburg"' for the loan of some 100 icons from Byzantium, Greece, Crete, Russia and the Balkans, have now been successfully completed with the visit of Mr Rob Roozmond, the Foundation's director to Christchurch in February. Including works from the 11th to the 19th centuries, with the bulk from the 14th to the 17th centuries, this \$4,000,000 collection is currently on show at Recklinghausen, Germany. From there it will travel to Christchurch where it will be shown during September and October, before going on to Wellington, Sydney, Melbourne and Tokyo and a short North American tour prior to its return to the castle in which it is housed at Echteld in the Betuwe. Never before, and possibly never again, will such a comprehensive and extraordinarily beautiful collection of Orthodox Church treasures be seen in this part of the world. Audio-visual and static educational displays will be included as will a 272 page book/catalogue containing 112 colour reproductions.



Two views of the recent "Glass" exhibition.

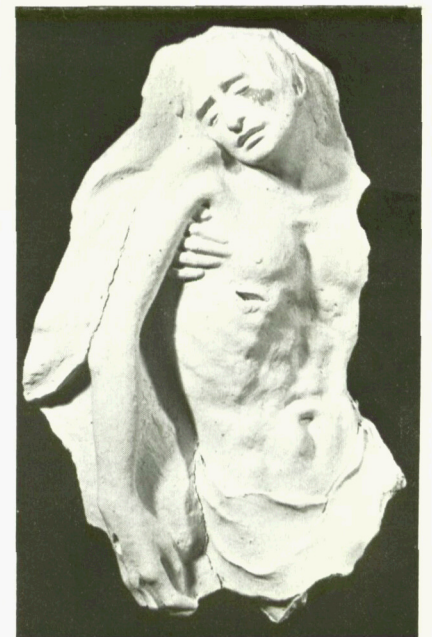


"Archangel Michael" from Deesis. Russian 15th Century. From the forthcoming exhibition "Eikon-Icons from the Wijenburg Collection."

Acquisitions

From Mr & Mrs Farrant and Mrs Ria Bancroft we have been extremely fortunate in receiving as a gift the beautiful terracotta *Fragment of a Portrait Bust* which the Gallery has had on loan for some time.

From Mrs Ria Bancroft we have also been honoured with the gift of two terracotta torsos of the Christ figures from the original clay models of the Tabernacle doors at Christchurch's Cathedral of the Blessed Sacrament and the two Patrix plaster original models of the *Deposition* and *Ascension* panels from which the final doors were cast.



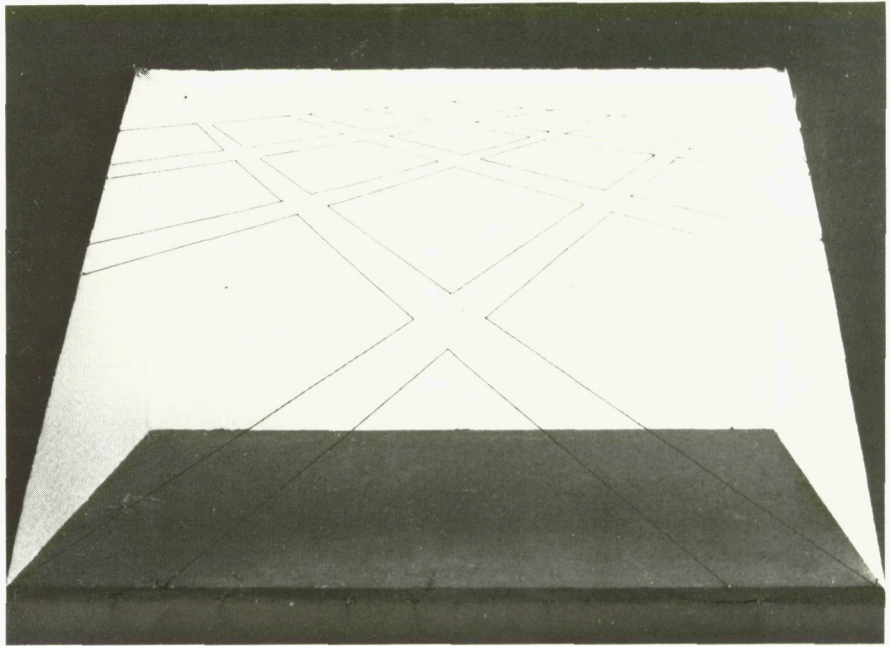
Ria Bancroft, "Christ Torso-Deposition", Terracotta, 1976.

"The Street" March 8–April 27

If architecture is the most public and most democratic of all works of art as has been suggested, then the street is the most comprehensive and well patronised art gallery we have. If 'the city is the most concrete, the most lasting and the most inspiring expression of man's social genius', then it is through the street that we experience his grand creation.

The street, we all use. We travel along it and our goods are transported on it. We walk, jog, play, cycle and drive on it. We shop on it — we use it in a multiplicity of ways. And we build and we plant adjacent to it, advertise our wares and services on it. *But what have we created, what do we think of it? Are our streets as we would have them — are you satisfied with their appearance — are they the agency of social contact and communication they might be?*

This exhibition is a new and we hope, exciting innovation in art gallery exhibition policy; we trust that it will stimulate thinking about such aspects of the street environment we create for ourselves. Part aesthetic, part sociological, it is a pot pourri of reactions by artists and others in a wide variety of media to such diverse subjects as transportation and traffic flow, the evolution of street systems, law and order, emergency services, people who work on the streets, the Black Power movement, architecture grand and simple etc; and it permits of experimental installations which draw on street themes for their *raison d'être*. (The Queen Elizabeth II Arts Council has generously supported the undertaking with a series of artists' project grants totalling \$3850).



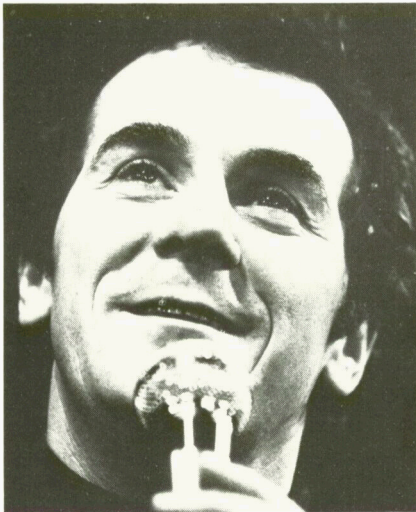
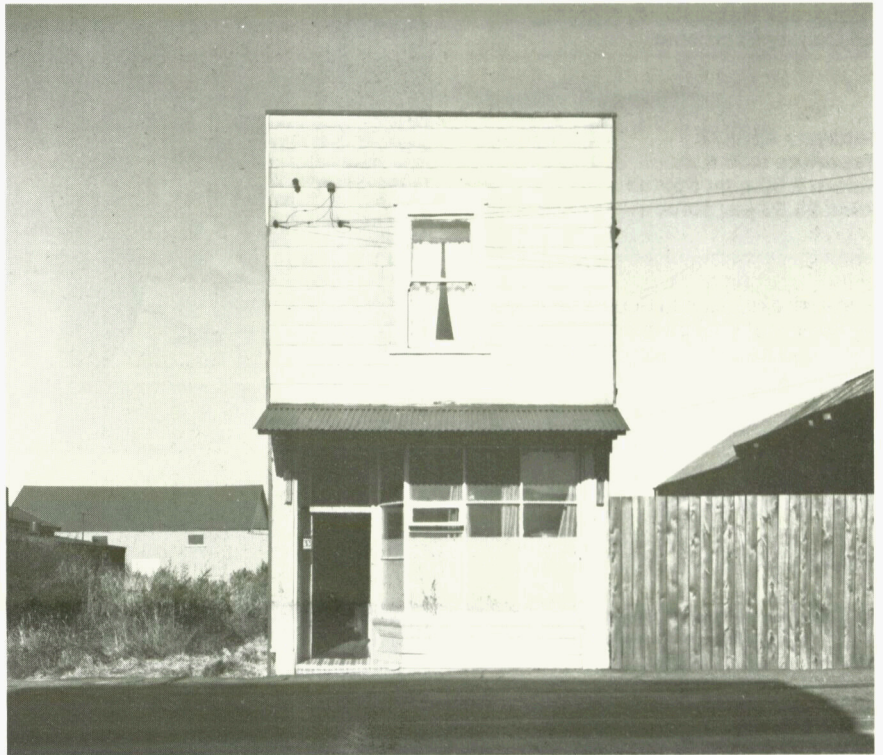


SPECIAL EVENT

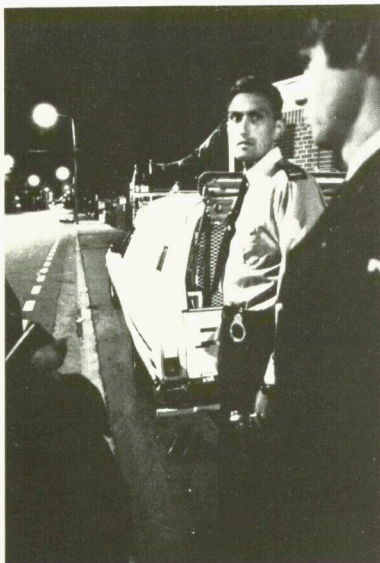
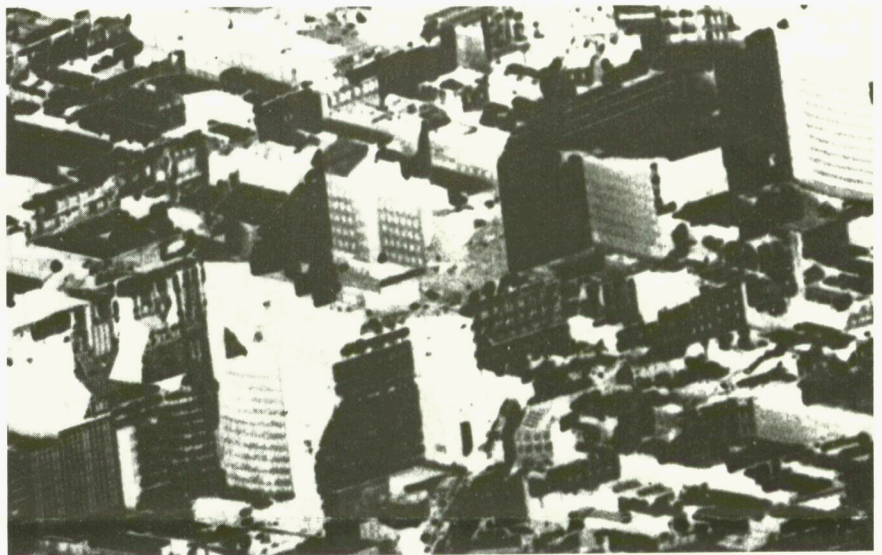
"The Street" March 8 8:00 p.m.

To mark the opening of our two month long "Street" exhibition we are offering something very different, a JAZZ concert. MALCOLM McNEIL (vocalist), JOHN DENSEM (pianist) in a programme of street numbers. Enjoy such old established standards as *Basin Street*, *Street of Dreams*, *Easy Street*, *Sunny Side of the Street*, *12th Street Rag*, *42nd Street*, *Lime Street Blues*, *On the Street Where You Live*, *Street Music*, *Racing in the Street*, *Dancing in the Street*, *Back Streets*, *Just a Little Street Where Old Friends Meet*, *Main Street*, *Streets of Fire*, *Wall Street Shuffle*, *Beale Street Blues*, *52nd Street*, *Streets of London*, by these two polished and exciting performers.

ADMISSION: 50 CENTS



Malcolm McNeil will perform at the gallery on Saturday March 8 with a programme of street songs.



**Maori Cave Paintings/
Castlerock Homestead/Aigantighe
Art Gallery Excursion**

**Saturday April 12
Departure 8:30 a.m.
Return 9:00 p.m. approx.
Price \$8.50 per person**

A special excursion to South Canterbury for Society of Friends members has been organised for the weekend after Easter. This trip will allow members to see the celebrated Maori cave paintings in the Hazleburn area, the Castlerock Homestead and the new extensions to Timaru's Aigantighe Art Gallery. Our hostess at Hazleburn will be Mrs Kenneth Graham of Cave, a local resident who is thoroughly familiar with the location of these fading, and no longer normally accessible, Maori works. The 'Castlerock' owners will meet us there and Mr. Ainslie Manson will show us the new additions at his gallery. All in all it will be a full and pleasurable excursion at a time of the year when it is neither too hot nor too cold.

Mrs. Graham advises us that special clothing is not required for the cave walk but that she recommends the use of sensible shoes or boots. She also advises you to bring your cameras.

We have chartered a 36 seater Midlands coach and we will depart from Rolleston Avenue outside the Museum at 8:30 a.m. You should provide a picnic hamper lunch, but the bus will make a stop for an *à la carte* meal in Timaru en route back to Christchurch.

You will ensure your place on the bus by booking early at the gallery and paying the appropriate fare.



*Threepenny Folly performing in the
OutReach Summer Holiday Programme.*

OutReach

The OutReach programme for March and April intends to keep somewhat in step with the "Street" Exhibition. The Sunday concerts on Sunday March 2 and Sunday April 6 will feature jazz music and our Gallery "Busker". David Lloyd from the Threepenny Folly Company will be taking this novel form of traditional street entertainment around the Christchurch streets. A pavement art competition is planned on the asphalt forecourt in the main entrance to the Gallery, again reviving a time honoured European activity not often seen in New Zealand.

Jill Wilcox and the Threepenny Folly Company are working on a new set of programmes and their main attention during this period will be directed towards suburban centres, social clubs and lunch hour concerts for, factory and office staff.

The OutReach programme is intentionally flexible and requests for information on performances are always welcome.

McDougall Art Gallery: Provided By You For You.