

11 DEC 1970

THE NEW ZEALAND

ACADEMY

OF FINE ARTS

WELLINGTON



Cora Corelli-Nielsen, No. 81

MACHILLAN
TOWN COLL'N
N
5097
.W4
.N532 ac

Els Noordhof, No. 198



CATALOGUE
of
Annual
Exhibition

1970

20c.

11 DEC 1970

THE NEW ZEALAND ACADEMY
OF FINE ARTS

•

CATALOGUE

of the
ANNUAL EXHIBITION

1970

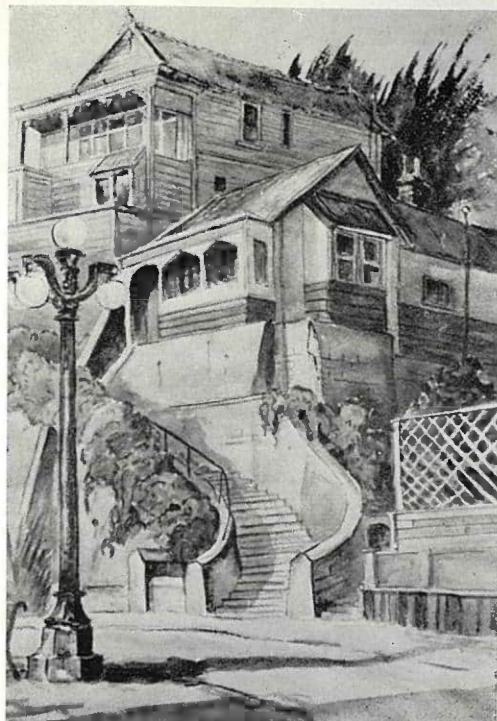
Opened by
His Excellency Sir Edwin Hicks, C.B.E.,
High Commissioner for Australia
on the evening of FRIDAY, 30th OCTOBER, 1970
at 8 o'clock

OPEN DAILY
from 31st OCTOBER to 22nd NOVEMBER

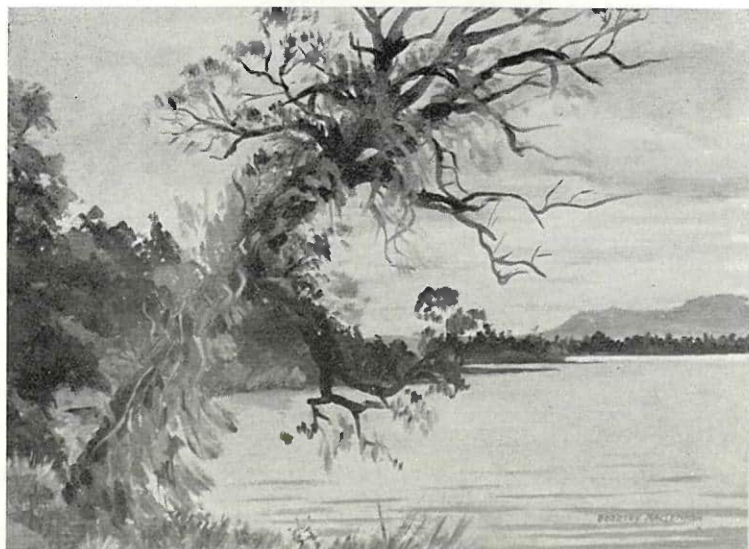
HOURS:
MONDAY TO SATURDAY 10 a.m. to 5 p.m.
SUNDAY 1 p.m. to 5 p.m.

•

ADMISSION — 10 cents
CATALOGUES — 20 cents



George Packwood, No. 44



Dorothy MacLennan, No. 64

NOTE TO PURCHASERS

Intending Purchasers should apply to the attendant.

Works purchased will be available for collection from the Academy Gallery on Wednesday, 25th November.

REMOVAL OF EXHIBITS

Exhibitors are reminded that unsold works must be collected from the Western Goods Entrance on Tuesday, 24th November. Hours: 9 a.m. - noon, 2 p.m. - 5 p.m.

THE NEW ZEALAND ACADEMY OF FINE ARTS

Patron:

His Excellency the Governor-General
SIR ARTHUR PORRITT, Bt., G.C.M.G., G.C.V.O., C.B.E.

President:

R. J. Waghorn, M.A.

Vice-Presidents:

Ian Calder, F.N.Z.I.A., A.R.I.B.A.
Robin Kay, B.A.

Council:

Roy Cowan	John Harcourt
Lorna M. Ellis	David Carson-Parker,
Joan Fanning, D.F.A.	B.Com., A.C.A.
(Lond.)	Arthur Briscoe
	Brian S. Carmody

Hon. Treasurer:

C. J. Read, M.Com.

Hon. Auditor:

R. C. Morpeth, B.Com., F.I.A.N.Z., F.C.A.

Secretary:

Constance Kirkcaldie

Assistant Secretary:

Joan Pascoe

CATALOGUE

GALLERY ONE

CORA CORRELLI-NIELSEN—	Price
1. Hon. J. Scott (Oil)	\$250
PETER MORIARTY—	
2. Hotel Cardrono (Oil)	\$95
R. J. WAGHORN—	
3. Tropical Archipelago (Acrylic)	\$60
4. Crater's Rim (Acrylic)	\$80
5. The Stadium at Delphi (Acrylic)	\$80
GWEN KNIGHT—	
6. Bush Reserve, Lake Wairapara (Oil)	\$90
7. Stream at Heretaunga Golf Links (Oil)	\$80
GWEN CASHMORE—	
8. The Estuary of the Mokau (Oil)	\$40
MAX RAGLESS—	
9. Makara Beach (Oil)	\$200
10. Under Mount Sealy (Oil)	\$400
WALTER G. TOMBLESON—	
11. Surfies (Oil)	\$120
BRENT WONG—	
12. Pacific: The Ascent (Acrylic)	N.F.S.

CHARLES TOLE—	
13. Windsock (Oil)	\$65
NORMAN SCOTT—	
14. Contrasts (Oil)	\$45
15. Hangaroa (Oil)	\$50
MARION E. TYLEE—	
16. Waikato River, Taupo (Oil)	\$50
GWEN KNIGHT—	
17. Through the Woods (Oil)	\$50
FRED O'NEILL—	
18. Back Country Landform (P.V.A.)	\$60
19. Central Otago Landform (P.V.A.)	\$60
THELMA M. BARRATT—	
20. This Silent Place (Oil)	\$60
R. J. WAGHORN—	
21. Towards Kapiti (Acrylic)	\$120
BASIL HONOUR—	
22. Blue and Green (P.V.A.)	\$50
23. Red and Green (Acrylic)	\$80
BRENT WONG—	
24. Northern Spring Image (Acrylic)	N.F.S.
RODGER HARRISON—	
25. West Coast 1 (Acrylic collage)	\$160

JAN BAKER—

26. The Bay (Oil) \$70
 27. Far North (Oil) \$70
 28. North Cape (Oil) \$120

EVALINE MARTIN—

29. The Willow Paddock (Oil) \$28

NORMAN SCOTT—

30. Fisherman's Wharf (Oil) \$75

OLIVE LAURENSEN—

31. Windswept Trees (Oil) \$50

GORDON E. BROWN—

32. Old Coach House, Otaki (Oil) \$70

CORA CORELLI-NIELSEN—

33. Portrait of John A. Lee (Oil) \$250

PETER BEADLE—

34. Grebe Valley, Fiordland (Oil) \$200

BEVERLEY SHORE BENNETT—

35. Reflections (Oil) N.F.S.

COLYN NICHOLLS—

36. Forgotten Corner (Oil) \$95

GWYNETH RICHARDSON—

37. Beddgelert, Wales (Watercolour) \$40
 38. Old Homestead, North Auckland
 (Watercolour) \$35
 39. On Coromandel Peninsula (Watercolour) \$35

ALBERT L. WONG—

40. Broadway, Reefton (Pen and Wash) \$35

SYDNEY H. HIGGS—

41. Western Creek, Tasmania (Watercolour) \$45
 42. Evening Light, Tasmania (Watercolour) \$50
 43. Mt. Roland, Tasmania (Watercolour) \$38

GEORGE PACKWOOD—

44. Private Accommodation, Napier
 (Watercolour) \$60

BEVERLEY SHORE BENNETT—

45. Sketch of Di (Oil) N.F.S.

TUI McLAUHLAN—

46. Floodwaters, Paeroa (Watercolour) \$40

VIVIAN MANTHEL—

47. Concentration (Oil) \$50

MARGARET A. WATERS—

48. Douglas (Oil) N.F.S.

ALBERT L. WONG—

49. Old Cottage (Pen and Wash) \$25
 50. Grant Road, Wellington (Pen and Wash) \$30

JOAN WATSON—

51. Ohariu Landscape (Watercolour) \$25

ROY A. STEER—

52. Derelict Farm Buildings (Watercolour) \$50
 53. Cloverfields, Wairarapa (Watercolour) \$50

GWEN CASHMORE—

54. Summer Surf, Piha (Watercolour) \$35
 55. The New Boat (Watercolour) \$30

SALLY EDEN—

56. Excavation, Motorway (Ink and Watercolour) \$45
 57. Old House, Tinakori Road
 (Ink and Watercolour) \$45

ELISABETH HARPER—

58. Still Life and Boats (Watercolour) \$30

R. B. WATSON—

59. Sunshine and Frost, Norfolk (Oil) \$200
 60. Waterfront, Singapore (Oil) \$300
 61. Winter Landscape (Oil) \$200
 62. A March Day, Norfolk (Oil) \$300

STEPHEN GREEN, A.R.C.A.—

63. Raumati from Paekakariki (Oil) \$40

DOROTHY MACLENNAN—

64. By Lake lanthe (Oil) \$75

ROBIN KAY—

65. The Three Sisters, Tongaporutu
 (Watercolour) \$36

AVIS HIGGS—

66. Early Spring (Watercolour) \$65

TERENCE EADY—

67. Lindis Pass (Central Otago) (Watercolour) \$59
 68. Taylor's Mistake (Christchurch) (Watercolour) \$55

ALBERT E. BOLLARD—

69. Gannets at Cape Kidnappers (Watercolour) \$60
 70. Atiamuri, Kaingaroa Forest (Watercolour) \$55

STEWART MACLENNAN—

71. Wellington from the South (Watercolour) \$85
 72. Lake lanthe (Watercolour) \$100
 73. Beeches in Rain, Merrijigs (Watercolour) \$80
 74. Misty Morning, Mapourika (Watercolour) \$110
 75. Rocks by the River, Buller (Watercolour) \$75
 76. Silver on Lake lanthe (Watercolour) \$105

ELISE MOURANT—

77. Pakatoa Island Jetty (Watercolour) \$18
 78. Misty Day, Mount Egmont (Watercolour) \$20
 79. Still Life with Fruit (Watercolour) \$18

ROBIN KAY—

80. Inglewood (Watercolour) \$42

CORA CORELLI-NIELSEN—

81. Portrait of Lady Robinson (Oil) \$250

PETER MORIARTY—

82. Arrowtown (Oil) \$80

GALLERY TWO

BONNIE QUIRK—

83. Tawa Houses, No. 3 (Pen and Wash)	\$25
84. Tawa Houses, No. 1 (Pen and Wash)	\$25
85. Tawa Houses, No. 2 (Pen and Wash)	\$25

KATHLEEN McKAY—

86. Firebird (Mixed Media)	\$35
----------------------------	------

JOAN LINDSEY—

87. Birds Waiting (Oil)	\$50
88. Blue Study (Oil)	\$50
89. Morning (Oil)	\$50
90. Red Mood (Oil)	\$40
91. Shorebirds (Oil)	\$50

CHERIE McLAUHLAN—

92. The Harbour (Watercolour)	\$48
93. Shipping (Watercolour)	\$45

AVIS HIGGS—

94. Dawn (Acrylic)	\$60
95. Dusk (Acrylic)	\$60

CHARLES TOLE—

96. Landscape with Stonecrusher (Oil)	\$195
97. Rooftop Landscape (Oil)	\$125

WALTER G. TOMBLESON—

98. Suggested Forms (Oil)	\$80
---------------------------	------

KATHLEEN McKAY—

99. Sandhills (Mixed Media)	\$35
-----------------------------	------

NIGEL J. HUMPHREYS—

100. Ohiro Bay Sunset (Acrylic/Tinfoil)	\$100
---	-------

TERENCE EADY—

101. Frost (Acrylic)	\$79
----------------------	------

SUZANNE FARMER—

102. Marigolds (Acrylic)	\$55
103. Summer Leaves (Acrylic)	\$55

CLARK ESPLIN—

104. The Cathedral (Watercolour)	\$50
----------------------------------	------

TOM ESPLIN—

105. Megalopolis (Oil)	\$65
------------------------	------

AURIEL SHEARER—

106. Spatial Theme 1 (Acrylic)	N.F.S.
--------------------------------	--------

ELIZABETH POOLE—

107. Mangrove Flats (Oil)	\$35
---------------------------	------

KERRY LANDON-LANE—

108. Awatere (Oil)	\$150
--------------------	-------

MAVIS OSBORNE—

109. Figure (Oil)	\$30
-------------------	------

TUI ZANETICH—

110. Bye Bye Birdie (Oil)	\$34
---------------------------	------

NIGEL J. HUMPHREYS—

111. Forecast, Rain (Acrylic)	\$90
-------------------------------	------

ELS NOORDHOF—

112. Scorching Bay (P.V.A.)	\$60
-----------------------------	------

PHILIP NIELSEN

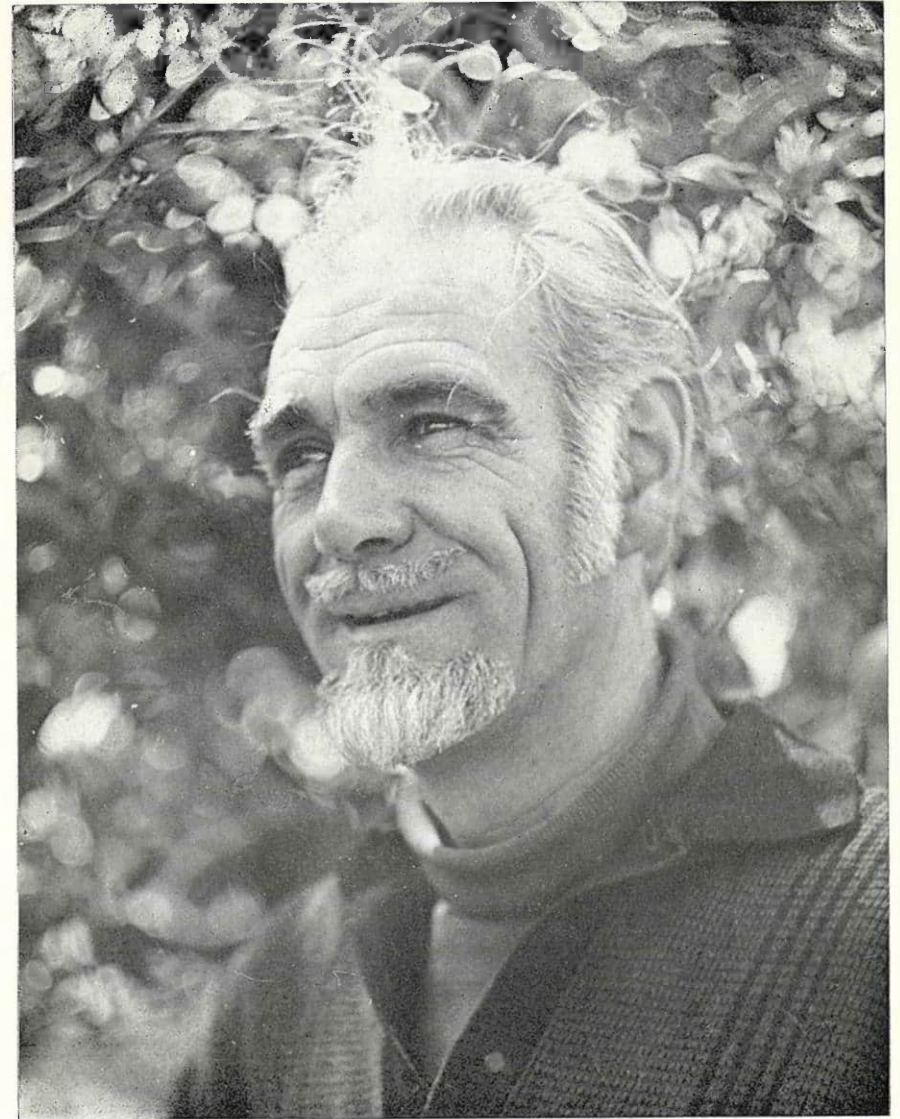
Philip Nielsen, guest sculptor for this exhibition was born in 1925 on a Manawatu dairy farm. He first became interested in sculpture at the age of thirteen, from public library reading, particularly of Jacob Epstein's "Let there be Sculpture".

He studied at Auckland University and the Elam School of Art and travelled widely in Europe and the United Kingdom. He claims that his interest in abstract art stems from his being "impressed with the sublime in Mondrian".

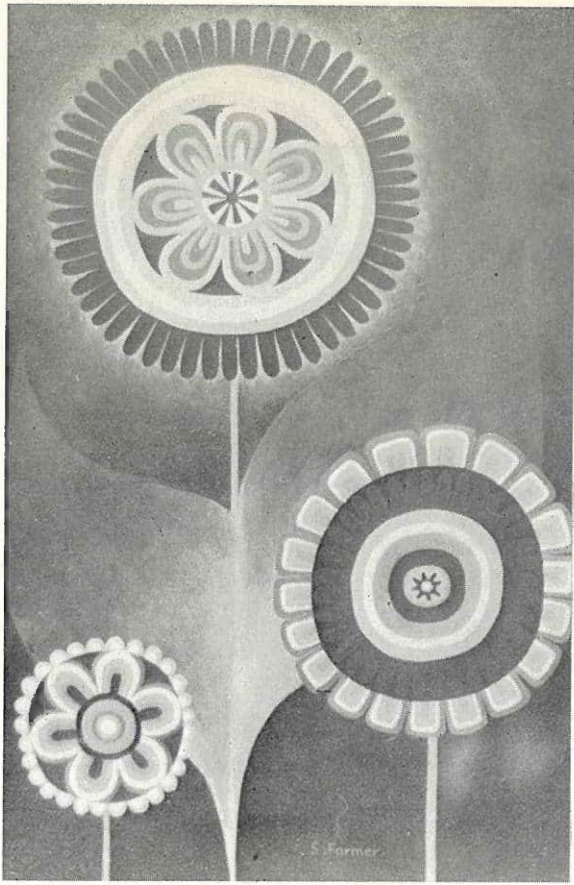
He has studied with Theo Schoon (reliefs) and Kees Hos (prints). Between 1961 and 1964 he exhibited in one-man and group shows annually in Auckland galleries and received commissions for reliefs in public and private buildings. He has reliefs in the Hocken library and in private collections. The Ikon gallery showed his first exhibition of prints in 1964.

He returned to the United Kingdom that year and began constructions. He met Gabo, Moore, Hepworth, Lardera and other prominent sculptors and exhibited with Artists' International Association in London and the provinces. He has works in private collections in Britain and in America.

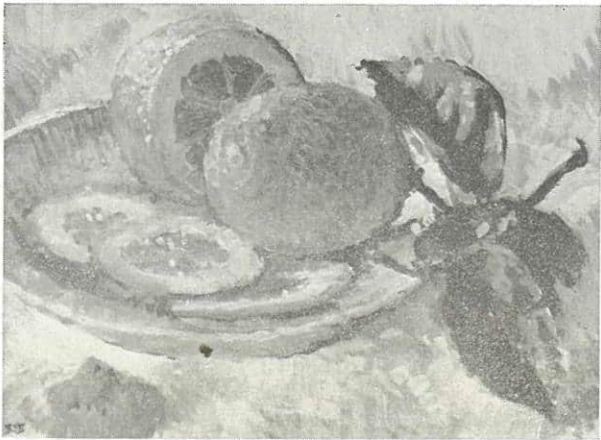
In 1969 he returned to New Zealand and is currently employed in the nursery trade. He says he is "interested in expressiveness of shape, negative and positive relationships, simplicity of technique, and ready availability of materials—sculpture, like music, for everyday enjoyment".



PHILIP NIELSEN



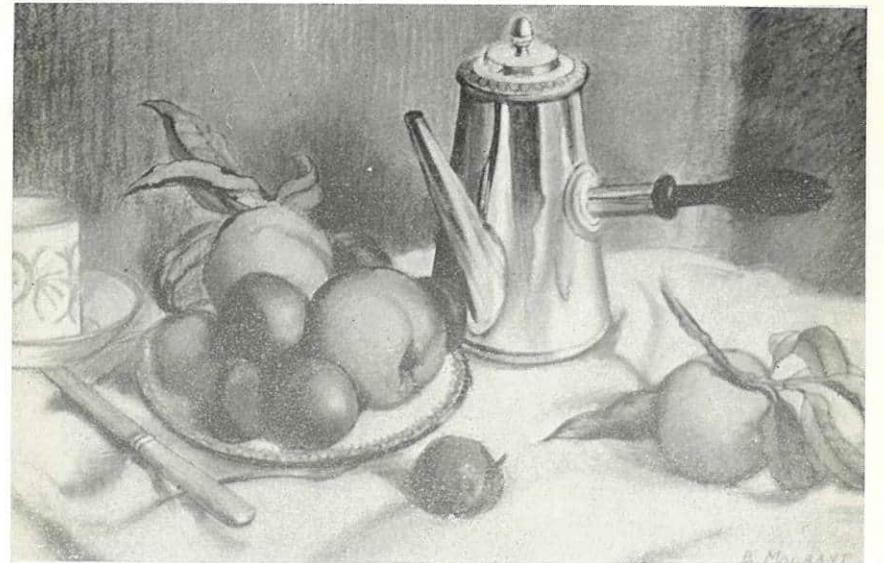
Suzanne Farmer, No. 102



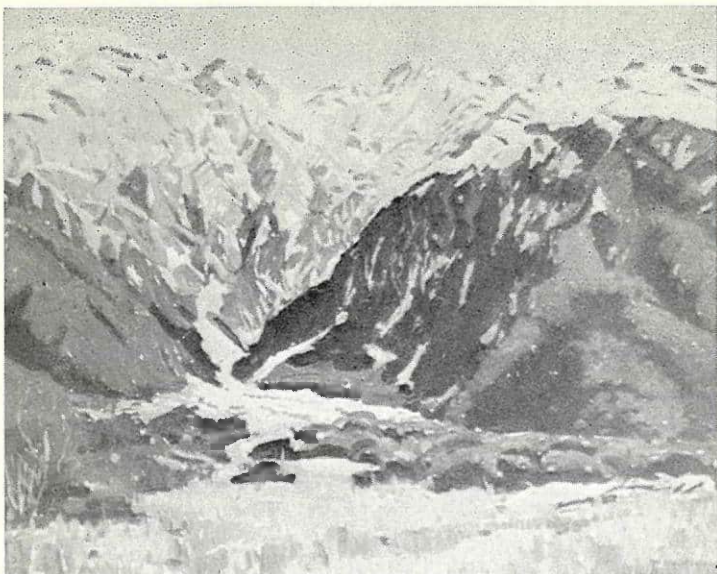
Beverly Shore Bennett, No. 217



Carol Wilson, No. 188



Elise Mourant, No. 79



Max Ragless, No. 10



Gwen Knight, No. 6

GALLERY THREE

- | | |
|---|-------|
| ALLONA PRIESTLEY— | |
| 113. Kikuyu Woman (Acrylic) | \$30 |
| MARIA SZEKELYHIDY— | |
| 114. A Pound of Flesh (Oil) | \$200 |
| LOIS McLEAN— | |
| 115. Still Life with Daisies (Oil) | \$38 |
| CLAIRE JENNINGS— | |
| 116. Spring Growth (Oil) | \$75 |
| OLGA COX— | |
| 117. Waterlilies (Oil) | \$40 |
| EVALINE MARTIN— | |
| 118. Camellias (Oil) | \$24 |
| JOAN WATSON— | |
| 119. Airstream (Crayon and Watercolour) | \$40 |
| MABEL STILL— | |
| 120. Blossom and Snow (Oil) | \$75 |
| A. GEOFFREY HUGHES— | |
| 121. Flotsam, Golden Beach (Oil) | \$100 |
| COLYN NICHOLLS— | |
| 122. Waterlilies (Oil) | \$70 |
| OLGA COX— | |
| 123. Kaikoura Pastoral (Gouache) | \$24 |
| BETTY EATON— | |
| 124. Mountain Forms (Oil) | \$80 |

JOY SIMMONS—

125. The Red Barn (Watercolour) \$30

MARION E. TYLEE—

126. Derelict Grader (Oil) \$40

SAM CAIRNCROSS—

127. Storm Clouds over Taupo (Oil) \$110

MURIEL WRIGHT—

128. In the Bee-Loud Glade
(Collage, PVA & Acrylic) \$30

JOHN FIJN—

129. Sydney Street W, Wellington (Oil) \$60

CARL T. LAUGESEN—

130. Late Evening, Lyall Bay (Oil) \$50

SHONA McFARLANE—

131. Wet Summer Holiday (P.V.A.) \$100

RICHARD JACKSON—

132. Boat Sheds (Oil) \$40

MURIEL HOPPER—

133. Old Wharf, Kaikoura (Oil) \$75

EVALINE MARTIN—

134. Ginger Flower (Oil) \$30

HILDA WALKER—

135. Banks of the Wairau Marlborough (Oil) \$65

JUDITH HURST—

136. Butterfly Intertide (Watercolour) \$45

NAN MERCER—

137. Porirua Harbour (Oil) \$30

CLAIRE JENNINGS—

138. Advice (Oil) \$75

139. White Island, 1970 (Oil) \$40

JUDITH HURST—

140. Conversation Piece (Watercolour) \$40

141. Bush Walk (Watercolour) \$43

NORMAN SCOTT—

142. Beach No. 4 (Oil) \$65

143. Loading (Oil) \$45

RUBY RANKIN—

144. Camellias in Pewter Tankard (Oil) \$40

BEATRICE SEDDON—

145. At Arthur's Pass (Watercolour) \$30

146. Camellias and Hellibore (Watercolour) \$45

147. Ranunculus Lyallii in the Otira
(Watercolour) N.F.S.

STEPHEN GREEN, A.R.C.A.—

148. The Ho-Ho and the Harbour Board (Oil) \$60

W. S. WAUCHOP—

149. Near Otira, Westland (Watercolour) \$32

150. The Teremakau River (Watercolour) \$50

BEATRICE SEDDON—

151. In the Garden (Watercolour) \$50

EANA JEANS—

152. Mainly Fuchsia and Fern (Watercolour) \$50

GALLERY FOUR

COLYN NICHOLLS—		
153. Blue Morning (Oil)		\$105
154. Grey Morning—Wai iti (Oil)		\$70
VIOLET WATSON—		
155. Maoris with Umbrellas (Oil)		\$40
R. B. WATSON—		
156. The Schooner Market, Curacao (Oil)		\$300
IDA H. CAREY—		
157. Marohia (Sleeping) (Oil)	N.F.S.	
158. Mrs. Kirokino Kohita Epiha (Oil)	N.F.S.	
159. Pare Taianie (Oil)	N.F.S.	
LOUISE ORGIAS—		
160. Richard Orgias (Oil)	N.F.S.	
MABEL STILL—		
161. Lorna Ellis, A well-known Sculptress (Oil)		\$70
VALERIE BEERE—		
162. Janine (Oil)		\$90
CECIL MANSON—		
163. Spring (Acrylic)		\$130
MAB HURLEY—		
164. Warmth (Oil)		\$25
RITA BLAKELEY—		
165. Girl with Guitar (Collage & P.V.A.)		\$50
PAMELA SEARELL—		
166. Coastal Image (Mixed Media)		\$30

JOHN HURST—		
167. Untitled (Oil)		\$60
E. R. STEINER—		
168. Beginning (Acrylic)		\$80
169. Climax of Flight (Acrylic)		\$90
ARTHUR BRISCOE—		
170. Horizon (Oil)		\$200
GRAEME MUDGE—		
171. Separated (Oil)		\$70
172. Cry (Oil)		\$70
HELEN M. STEWART—		
173. The Wine-Dark Sea (Oil)		\$50
174. People at a Bus Stop (Oil)		\$40
175. The Bay (Oil)		\$40
PATRICK HUTCHISON—		
176. Joy of Life (Acrylic)		\$100
177. Mansions of Desire (Acrylic)		\$100
ARTHUR BRISCOE—		
178. Duality (Oil)		\$200
ARTHUR McGHIE—		
179. Will. Shakspeare Presents (Acrylic)		\$80

GALLERY FIVE

OLIVE LAURENSEN—		
180.	Profile of a Young Girl (Monoprint & Wash)	\$35
SYLVIA MOFFAT—		
181.	The Painter (Pen and Ink)	\$10
ARCHITECTURAL PERSPECTIVE		
CALDER, FOWLER & STYLES—Architects		
182.	Harco House, Wellington	N.F.S.
CHARLES McC.MOORE—		
183.	Jugs (Watercolour)	\$18
HEATHER GARNETT—		
184.	New Zealand Scene (Scraperboard)	N.F.S.
HILDA WALKER—		
185.	Stafford Street, Paddington, Sydney (Ink)	\$25
186.	Old Paddington Pub, Sydney (Ink)	\$25
CAROL WILSON—		
187.	Mangoes (Oil)	\$40
188.	Brass Coffee Pot (Oil)	\$40
PETER MORIARTY—		
189.	Closeburn Station, Queenstown (Oil)	\$55
190.	Main Street, Arrowtown (Oil)	\$110
191.	Cottages, Arrowtown (Oil)	\$100
FRED ALEXANDER—		
192.	Beacon Hill (Oil)	\$30
GWEN CASHMORE—		
193.	Evening, Island Bay (Oil)	\$30
ROY J. DICKISON—		
194.	Kawarau Station, Shearing Sheds (Oil)	\$69

JOAN HITCHCOCK—		
195.	Blue in Depth (Oil)	\$45
196.	Stringed Puppet (Oil)	\$40
RONALD WOOLF—		
197.	Contour in Chroma (Air brush)	\$70
ELS NOORDHOF—		
198.	Girl in Green (P.V.A.)	\$60
PAMELA SEARELL—		
199.	Constellation: Aries (Mixed Media)	\$50
ARTHUR DAGLEY—		
200.	Installation (Acrylic)	\$75
FLORENCE LUXFORD—		
201.	Moon Movement (Oil)	\$125
E. J. BURNS—		
202.	Come Unto Me (Oil)	\$70
PAMELA SEARELL—		
203.	Constellation: Cancer (Mixed Media)	\$50
ARTHUR DAGLEY—		
204.	Anchorage, No. 1 (Acrylic)	\$75
MARY ANSELL—		
205.	Marine Plant (Oil)	\$60
ANNE LANGBEIN—		
206.	Girl Reading (Oil)	N.F.S.
DAVID SABOURIN—		
207.	Flower Fantasy (Oil)	\$30
MABEL STILL—		
208.	Anne Gillies (Oil)	\$80

JULIA B. LYNCH—		
209.	Anna-Aubert (Oil)	N.F.S.
VIVIAN MANTHEL—		
210.	Nicola (Oil)	N.F.S.
MORAG KAY—		
211.	Contemplation (Pastel)	\$15
HEINZ BOEHNKE—		
212.	The Old Pensioner (Oil)	\$40
213.	Dropping the Line (Oil)	\$40
ESSIE HOGARTH-GILL—		
214.	The Sun in Winter (Watercolour)	\$20
KATHERINE McDOUGALL—		
215.	On Deck (Watercolour)	N.F.S.
JOY SERVICE—		
216.	Still Life, Dried Flowers (Watercolour)	\$45
BEVERLEY SHORE BENNETT—		
217.	Lemons (Oil)	\$40
218.	Mushrooms (Oil)	\$40
ELIZABETH PARROTT—		
219.	Welsh Singer (Oil)	\$30
220.	English Student (Oil)	\$30
HILDA WALKER—		
221.	Coastline, Pukerua Bay (Sepia Ink)	\$30
STELLA GIBBS—		
222.	The Merry Leaves (Acrylic)	\$34
VERONICA HAIGH—		
223.	St. Mary's from the St. George Hotel (Pastel)	\$75

SCROLLS

POH LIN LIEW—		
224.	Blossom (Watercolour)	\$40
225.	Down the Mulberry Bush (Watercolour)	\$33
226.	Summertime (Watercolour)	N.F.S.

MINIATURES

JOY PARKER R.M.S.—		
227.	The Basket (Water on Ivory)	\$28
228.	Gordonia (Water on Ivory)	\$60
229.	Sea Fever (Water on Ivory)	\$30
ROSEMARY REDMAYNE—		
230.	Philippa (Watercolour)	N.F.S.
231.	Leonard Redmayne (Watercolour)	N.F.S.
MYRTLE McDONALD—		
232.	New Zealand White & Green Clematis (Watercolour)	\$30
233.	New Zealand Edelweiss & Snowberries (Watercolour)	\$30

SCULPTURES

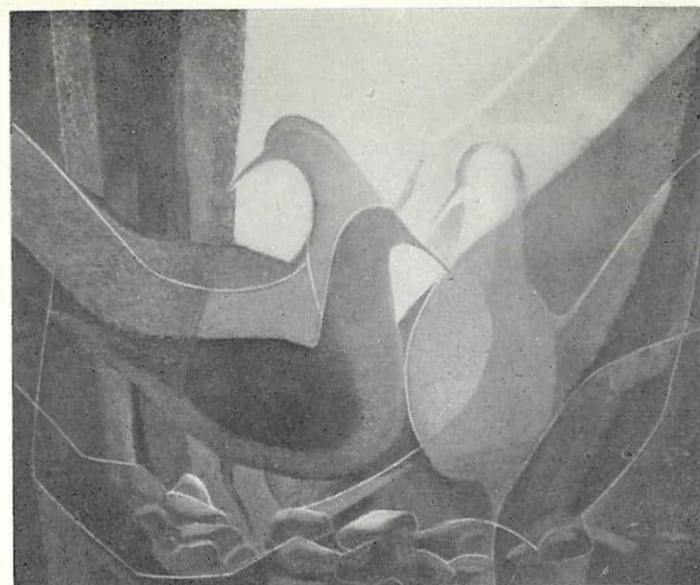
PHILIP NIELSEN—		
234.	Cosmocartouche (White acrylic painted marine plywood)	\$50
235.	Aetheric Element (White acrylic painted marine plywood)	\$50
236.	Naos (White acrylic painted marine plywood)	\$100
237.	Morning—Boat (White acrylic painted marine plywood)	\$80
238.	Couple Engrossed (White acrylic painted marine plywood)	\$80
239.	Virgin with the Laughing Child (White acrylic painted marine plywood)	\$60

INDEX

ALEXANDER, FRED R.	192
ANSELL, MARY	205
BAKER, JAN	26, 27, 28
BARRATT, THELMA	20
BEADLE, PETER	34
BEERE, VALERIE	162
BLAKELEY, RITA	165
BOEHNKE, HEINZ	212, 213
BOLLARD, ALBERT E.	69, 70
BRISCOE, ARTHUR	170, 178
BROWN, GORDON E.	32
BURNS, E. J.	202
CAIRNCROSS, SAM	127
CALDER, FOWLER AND STYLES—Architects	182
CAREY, IDA H.	157, 158, 159
CASHMORE, GWEN	8, 54, 55, 193
CORRELLI-NIELSEN, CORA	1, 33, 81
COX, OLGA	117, 123
DAGLEY, ARTHUR	200, 204
DICKISON, ROY J.	194
EADY, TERENCE	67, 68, 101
EATON, BETTY	124
EDEN, SALLY	56, 57
ESPLIN, CLARK	104
ESPLIN, TOM	105
FARMER, SUZANNE	102, 103
FIJN, JOHN	129
GARNETT, HEATHER	184
GIBBS, STELLA	222
GREEN, STEPHEN	63, 148
HAIGH, VERONICA	223
HARPER, ELISABETH	58
HARRISON, RODGER	25
HIGGS, AVIS	66, 94, 95
HIGGS, SYDNEY H.	41, 42, 43
HITCHCOCK, JOAN	195, 196
HOGARTH-GILL, ESSIE	214
HONOUR, BASIL	22, 23
HOPPER, MURIEL	133
HUGHES, A. GEOFFREY	121

HUMPHREYS, NIGEL J.	100, 111
HURLEY, MAB	164
HURST, JOHN	167
HURST, JUDITH	136, 140, 141
HUTCHISON, PATRICK	176, 177
JACKSON, RICHARD E.	132
JEANS, EANA	152
JENNINGS, CLAIRE	116, 138, 139
KAY, MORAG	211
KAY, ROBIN	65, 80
KNIGHT, GWEN	6, 7, 17
LANDON-LANE, KERRY	108
LANGBEIN, ANNE	206
LAUGESEN, CARL	130
LAURENSEN, OLIVE	31, 180
LIEW, POH LIN	224, 225, 226
LINDSEY, JOAN	87, 88, 89, 90, 91
LUXFORD, FLORENCE	201
LYNCH, JULIA B.	209
McDONALD, MYRTLE	232, 233
McDOUGALL, KATHERINE	215
McFARLANE, SHONA	131
McGHIE, ARTHUR	179
McKAY, KATHLEEN	86, 99
McLAUCHLAN, CHERIE	92, 93
McLAUCHLAN, TUI	46
McLEAN, LOIS	115
MACLENNAN, DOROTHY	64
MACLENNAN, STEWART	71, 72, 73, 74, 75, 76
MANSON, CECIL	163
MANTHEL, VIVIAN	47, 210
MARTIN, EVALINE	29, 118, 134
MERCER, NAN	137
MOFFAT, SYLVIA	181
MOORE, CHARLES McC.	183
MORIARTY, PETER	2, 82, 189, 190, 191
MOURANT, ELISE	77, 78, 79
MUDGE, GRAEME	171, 172
NICHOLLS, COLYN	36, 122, 153, 154
NIELSEN, PHILIP	234, 235, 236, 237, 238, 239
NOORDHOF, ELS	112, 198
O'NEILL, FRED	18, 19

ORGIAS, LOUISE	160
OSBORNE, MAVIS	109
PACKWOOD, GEORGE	44
PARKER, JOY	227, 228, 229
PARROTT, ELIZABETH	219, 220
POOLE, ELIZABETH	107
PRIESTLEY, ALLONA	113
QUIRK, BONNIE	83, 84, 85
RAGLESS, MAX	9, 10
RANKIN, RUBY	144
REDMAYNE, ROSEMARY	230, 231
RICHARDSON, GWYNETH	37, 38, 39
SABOURIN, DAVID	207
SCOTT, NORMAN	14, 15, 30, 142, 143
SEARELL, PAMELA	166, 199, 203
SEDDON, BEATRICE	145, 146, 147, 151
SERVICE, JOY	216
SHEARER, AURIEL	106
SHORE BENNETT, BEVERLEY	35, 45, 217, 218
SIMMONS, JOY	125
STEER, ROY A.	52, 53
STEINER, E. R.	168, 169
STEWART, HELEN	173, 174, 175
STILL, MABEL	120, 161, 208
SZEKELYHIDY, MARIA	114
TOLE, CHARLES	13, 96, 97
TOMBLESON, WALTER	11, 98
TYLEE, MARION E.	16, 126
WAGHORN, R. J.	3, 4, 5, 21
WALKER, HILDA	135, 185, 186, 221
WATERS, MARGARET	48
WATSON, JOAN	51, 119
WATSON, R. B.	59, 60, 61, 62, 156
WATSON, VIOLET	155
WAUCHOP, W. S.	149, 150
WILSON, CAROL	187, 188
WONG, ALBERT L.	40, 49, 50
WONG, BRENT	12, 24
WOOLF, R. D.	197
WRIGHT, MURIEL	128
ZANETICH, TUI	110

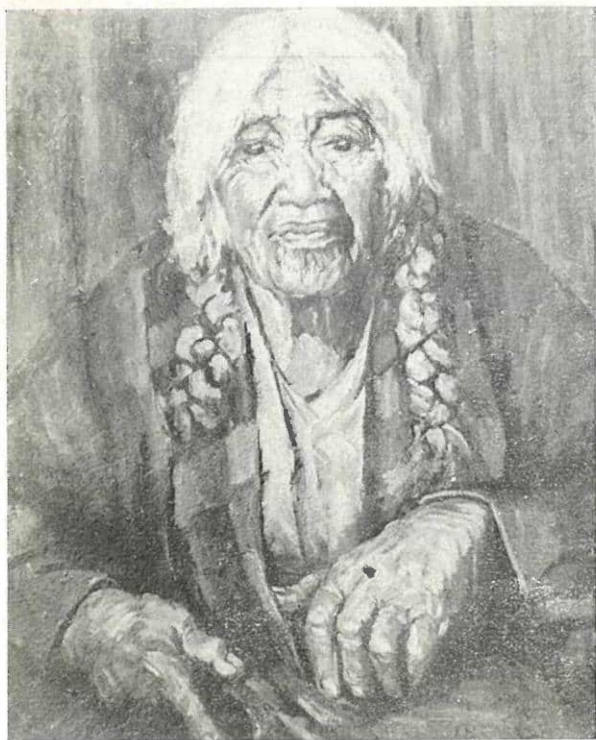
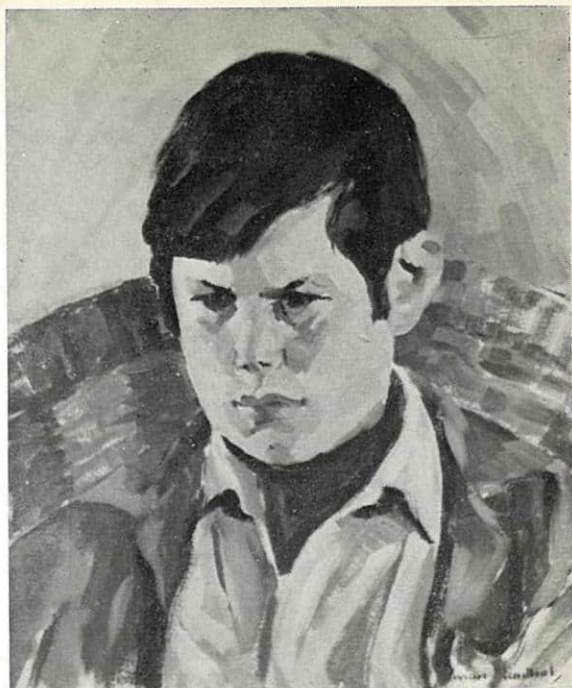


Joan Lindsey, No. 88



Brent Wong, No. 24

Vivian Manthel, No. 47



Ida H. Carey, No. 158